



# Hillsborough River Interlocal Planning Board & Technical Advisory Council

## Hillsborough River Interlocal Planning Board TAC Meeting

Tuesday, May 16, 2023, 1:30 pm

Meeting Location: Members-18<sup>th</sup> floor County Center / Public-Online

1. **Call to Order**
2. **Roll Call**
3. **Pledge of Allegiance**
4. **Moment of Silence**
5. **Public Comment**
- ★6. **Approval of Previous Meeting Summary**
  - A. April 18, 2023\*(p.3)
7. **Presentations, Reports & Status Updates**
  - A. Oldsmar's Private Lift Station Inspection Program, Eric Glass, City of Oldsmar
  - B. Tampa River Master Plan Update, Diego Guerra, TPC\*(p.7)
- ★8. **Consistency Recommendation**
  - A. Port Tampa Bay Minor Work Permit No. 76094\*(p.11)
  - B. Port Tampa Bay Minor Work Permit No. 76581\*(p.28)
  - C. Port Tampa Bay Minor Work Permit No. 76907\*(p.47)
9. **Other Business**
  - A. 2023 River Stewardship Award Recommendation in June

★ *Indicates Action Required*

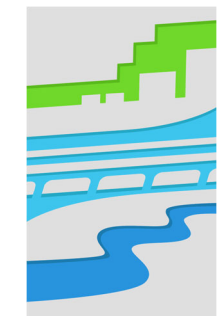
\* *Indicates backup material provided*

Technical support during the meeting may be obtained by contacting Priya Nagaraj at (813) 310-9709 or [Priyan@plancom.org](mailto:Priyan@plancom.org).

*Offices and meeting rooms are closed to the public due to the COVID-19 pandemic. Members of the public may access this meeting and participate via the link:*

<https://attendee.gotowebinar.com/register/190660142086875483>

Persons needing assistance reading or interpreting items in this document, free of charge, are encouraged to contact the ADA Coordinator at (813) 272-5940, or [ADACoordinator@plancom.org](mailto:ADACoordinator@plancom.org). Plan Hillsborough (the Planning Commission, the Hillsborough TPO and the Hillsborough River Board) cannot ensure accessibility for items produced by other agencies or organizations.



Plan Hillsborough  
[planhillsborough.org](http://planhillsborough.org)  
[planner@plancom.org](mailto:planner@plancom.org)  
813 - 272 - 5940  
601 E Kennedy Blvd  
18<sup>th</sup> Floor  
Tampa, FL, 33602#

This Page Left Intentionally Blank.



# Hillsborough River Interlocal Planning Board & Technical Advisory Council

April 18, 2023  
1:30 p.m.

Meeting Location:  
County Center/Online

## Hillsborough River Interlocal Planning Board Meeting Summary

### Present

Michael Owen, Chair  
Joseph Citro, COT  
Michael Gile, EPCHC  
Amber Smith, SWFWMD  
Alana Todd, TBRPC  
Stu Marvin, TT Citizen  
Shawn College, Exec Dir  
Melissa Dickens, TPC

Alison Fernandez, TT  
Rich Brown, HC Citizen  
Diego Guerra, TPC  
Jackie Julien, Port Tampa Bay  
Ali Howerton, FDEP  
Heather Maggio, COT  
Margaret Winter, USF

### **1. Call to Order**

Councilmember Citro called the meeting to order at 1:30 PM.

### **2. Roll Call**

An in-person quorum was met

### **3. Pledge of Allegiance**

Councilmember Citro led in the Pledge of Allegiance

### **4. Public Comment**

None.

### **5. River Board Election of Officers (two-year terms)**

- A. Chair – Motion by Joe Citro to nominate Michael Owen as Chair. Seconded by Michael Owen. The motion passed unanimously with Alison Fernandez absent.
- B. Vice Chair – Joe Citro nominated Allison Fernandez for Vice Chair, and Michael Owen seconded the motion. The motion was approved unanimously, with Alison Fernandez absent.

### **6. Recognition of service to the River Board by Councilmember Meredith Abel –**

Thanked Councilmember Abel for her two years of service. She expressed her pleasure in being on the Board.

### **7. Recognition of service to the River Board by Councilmember Joseph Citro –**

Shawn College expressed the pleasure of working with Councilmember Citro over the last few years; he is very engaged and genuinely concerned. Councilmember Citro asked that those remaining on the Board continue to keep the river safe.

### **8. Approval of Previous Meeting Summary**

**A. River Board:**

- October 24, 2022
- January 23, 2023

Commissioner Owen moved to approve the River Board minutes, seconded by Councilmember Citro. The voice vote passed unanimously.

**B. TAC – March 21, 2023**

Stu Marvin moved to approve the TAC minutes, seconded by Jackie Julien. The voice vote passed unanimously.

**9. Presentations, Reports & Status Updates****A. Plan Hillsborough Strategic Plan Implementation and Annual Report (Melissa Dickens, TPC)**

- Review the makeup of Plan Hillsborough and the history of the annual report; strategic plan developed by the three boards: Planning Commission, TPO, River Board
- Went over highlights of accomplishments from 2022
  - Citizen Engagement – 2,019 community inquires/clients served, 110 community presentations, FLiP and FLiP Jr. return in person, 1-Minute-Matters video series translated and reproduced in Spanish
  - Regionalism – participation in over 40 regional meetings, Regional Resilience Coalition, Coastal High Hazard Area workshops, Linking water supply and comprehensive planning through 10-Year Water Supply Facility Work Plans
  - Planning Partnerships – hosted/co-partnered 22 educational events, an amendment to protect Tampa's cemeteries, Tampa School Transportation Safety Study, continued collaboration with Hillsborough County and City of Tampa staff on Comprehensive Plan updates
  - Linking Land Use and Transportation – Tampa Comprehensive Plan Vision, Hillsborough County Centers and Connections, High volume of plan amendments, rezonings and consistency findings
  - Enabling Transportation Choices – Smart Cities Mobility Plan, Plant City Trail Study, Health Benefits of Complete Streets Study, Vision Zero school crosswalk mural
  - Technology and Innovation – Expanding the agency's digital library, online plan amendment applications, demographic dashboards
  - Internal Agency Enhancements – updates to the plan amendment procedures manuals, continued knowledge sharing events and community service events, updates to internal processes
- Went over Strategic Plan Implementation and next steps
- Asked that the Board members complete a survey and participate in the June 16<sup>th</sup> retreat

**Discussion:**

Councilmember Citro asked that there be a seagrass maintenance discussion at a regional level. The seagrasses are starting to dwindle and would like to see them stabilized. Noted that Bo Williams, a seagrass farmer, will be



speaking to Tampa Bay Regional Planning on June 14<sup>th</sup> on the subject. There was a discussion on what is being done now and the current status along with possibilities for the future. There is a cross-over of the staff at the regional level as well.

**B. Nature-Based Solutions on the Hillsborough River** (Margaret Winter, USF; Taryn Sabia, USF)

- Went over the background of the project – USF with the City of Tampa received a planning grant.
- Reviewed the completed tasks – literature review, historical data, defining criteria for selecting 3 sites, community outreach, identifying proposal partners for next steps
- Phase 2 – just been released and working on final grant proposal – went over the 6 potential sites that have been narrowed to 3: N. Rome Ave (Riverside Garden Park), Sulphur Springs Park, Rowlett Park
- Looked at community outreach efforts
- Went over the physical characteristics of the selected sites

**Discussion:**

It was asked when the next phase will happen. At the end of May and there are four awards from the Gulf Coast. It was asked if there are plans for the other sites that were not selected. Not at this time; are hoping the recommendations will be applicable to other areas.

**C. TAC Activity Update** (Dr. Richard Brown, Chair, River Board TAC)

- All three areas of the river are “hopping” with people from development to people vacationing, to warm season users.
- In the downtown area, there are a lot of boats.
- Wildlife is going pretty well.
- Working on a silting issue; idle speed cap; real-estate development in Tampa Heights and Riverside Heights is booming.
- There is an apartment complex in the Temple Terrace area with a lift station that has been putting an excessive amount of sewage into the river. Working on coordination where the lift stations are identified. TECO should call EPC before turning off the power.
- The river cleanup is doing well
- Lowery Park is increasing a new animal area that will increase animal waste; in negotiations with the City of Tampa. Lowery Park has been a responsible actor for the last 10 years. They are scheduled for an upcoming TAC meeting.
- Presentation from Micromix, will get back to the Board on that.
- The City of Tampa Water Department has been honoring its commitment to maintaining the flow

#

- The Masterplan is coming up for review
- The PURE Project, is moving very fast at this point; there is a new City Council coming in. There are many concerns with the project.
- Ecofest is at Mosey Museum on Earth Day
- Preallocation meeting regarding the West River Walk's next phase to be built
- Resilience Summit is May 4 & 5

## **10. Consistency Determinations**

### **A. TAC Action Item:**

- Port Tampa Bay Minor Work Permit No. 70468(R3)

**Stu Marvin moved to recommend consistency with the River Master Plan, seconded by Jackie Julien. The voice vote passed unanimously.**

### **B. Recommended for Finding of Consistency:**

- Port Tampa Bay Minor Work Permit No. 22-061
- Port Tampa Bay Minor Work Permit No. 75067
- Port Tampa Bay Minor Work Permit No. 75583
- Port Tampa Bay Minor Work Permit No. 70468(R3)

**Commissioner Owen moved to find all items in B consistent with the River Board Master Plan, seconded by Allison Fernandez. The voice vote passed unanimously.**

## **11. Other Business**

- A.** Strategic Planning Retreat, Friday, June 16, 2023, 8:30 – 12:00
- B.** July meeting: Select River Stewardship Award Winner; TAC will be considering recommendations prior to the meeting.



**Hillsborough River  
Interlocal Planning Board  
& Technical Advisory Council**

**Agenda Item 7. C. Tampa River Master Plan Update, Diego  
Guerra**

**Attachments:**

1. Draft Updated Tampa River Master Plan Policies



**Plan Hillsborough**  
[planhillsborough.org](http://planhillsborough.org)  
[planner@plancom.org](mailto:planner@plancom.org)  
813 - 272 - 5940  
601 E Kennedy Blvd  
18<sup>th</sup> floor  
Tampa, FL, 33602

**Proposed Changes to Hillsborough River Master Plan  
City of Tampa Comprehensive Plan  
Environmental Section**

~~ENV Policy 1.10.0: In cooperation with Hillsborough County and the City of Temple Terrace, preserve the water quality and quantity of the Hillsborough River, maintain its potability as a Class-I water body as designated by the FDEP and conserve its use under all future supply and demand scenarios.~~

ENV Policy 3.0.0: Make the Hillsborough River cleaner, safer and more attractive, protect its natural ecological functions which support plant and animal wildlife and to promote the enhancement of the river as a recreational and aesthetic asset to the surrounding community. This section shall serve as the Hillsborough River Master Plan, pursuant to Chapter 86-335, Laws of Florida.

ENV Policy 3.1.0: Continue to protect this major source of drinking water and promote the improvement of water quality in the Hillsborough River, where it does not meet or exceed State Water Quality Standards for its designated use.

~~ENV Policy 1.10.4: Through the land development review process, prevent the further destruction of desirable natural system buffers on the Hillsborough River and its major tributaries, unless found to be in the overriding public interest. The overriding public interest test, found in the Definitions section of this plan, provides criteria to guide City Council in the decision-making process.~~

ENV Policy 3.1.4: Prevent further destruction of desirable natural vegetative buffers along the Hillsborough River and its tributaries.

ENV Policy ~~1.11.0~~ 3.2.0: Control erosion and the propagation of nuisance vegetation in and along the Hillsborough River, in order to maintain and restore natural shorelines, ~~a minimum of 300 feet of natural shoreline shall be restored or permanently protected annually.~~

~~ENV Policy 1.11.5: Support and participate in the monitoring of the Hillsborough River's shoreline conditions by directing personnel to report to the appropriate authorities any illegal or unsafe conditions observed while in the course of assigned duties. Examples would include unsafe structure such as derelict docks, non-permitted water-oriented construction, dumping of trash/debris or cases of wildlife harassment.~~

~~ENV Policy 1.12.3: Require that all watercraft operate within the same regulations with exceptions as provided by the City.~~

ENV Policy ~~1.12.4~~ 3.3.3: In cooperation with the U. S. Coast Guard, the Florida Fish and Wildlife Conservation Commission, and Hillsborough County ~~deploy adequate law enforcement personnel to ensure proper enforcement of boating safety and speed laws~~ ensure proper enforcement of boating safety and speed laws.

ENV Policy ~~1.12.5~~ 3.3.4: To promote public safety and to protect the Hillsborough River's environmental attributes, ~~establish appropriate speed limits on the river downstream of the City of Tampa dam. A general speed limit on the river upstream of Fletcher Avenue, within the City of Tampa, shall be Slow Down/Minimum Wake, which is consistent with the craft speed established by Hillsborough County for~~

**Proposed Changes to Hillsborough River Master Plan  
City of Tampa Comprehensive Plan  
Environmental Section**

~~that area of the river.~~ establish and enforce appropriate speed limits on the river to promote public safety and protect the Hillsborough River's environmental attributes.

ENV Policy ~~1.12.6~~ 3.3.5: ~~Post informational signs providing relevant information to users of public access points regarding river conditions and regulations.~~ At public access points, provide information on river conditions and regulations.

~~ENV Policy 1.12.7: Assist in the enforcement of marine craft operational safety regulations through routine maritime patrols, requiring that motorized watercraft yield the right of way to non-motorized watercraft, particularly in the vicinity of the University of Tampa.~~

ENV Policy ~~1.12.8~~ 3.3.6: ~~The City recognizes the Hillsborough River as providing manatee habitat and will take action necessary to protect conditions important to the survival of this endangered species in the river. Such actions may include but are not limited to information/educational signs, marine craft speed regulations, protection of known food sources, the maintenance of fresh water flow from springs and the dam and the sensitive operation of existing water control structures and the sensitive design/operation of any new water control structures.~~ Take actions necessary to protect conditions important to the survival of the vulnerable West Indian Manatee.

~~ENV Policy 1.12.9: Continue the regulation of noise that is excessive, loud, disturbing and unnecessary, created by watercraft on the Hillsborough River.~~

~~ENV Policy 1.12.10: Develop regulations for the use of airboats and personal watercraft, particularly focusing on the impacts such craft have relating to noise nuisance and wildlife disturbance on the Hillsborough River.~~

ENV Policy ~~1.12.11~~ 3.4.0: ~~In recognition of the designation of a portion of the Hillsborough River that flows within or along the City's jurisdictional limits as the Alan Wright Hillsborough River Blueway and a state recreational trail (canoe), recognize the special character of that part of the river and shall not take any action which will impair its use as designated by the City or the State.~~ Continue to recognize the Alan Wright Hillsborough River Blueway and the State designated Hillsborough River Canoe Trail; ensure no action is taken that would impair its use.

ENV Policy ~~1.13.1~~ 3.4.1: ~~The Building Department shall only permit construction on the river by contractors licensed and bonded for marine construction.~~ Maintain the requirement of a local specialty license for contractors involved in marine construction projects to assure the proper placement, methods and materials are used in the construction of seawall, docks, ramps, and other marine related structures.

~~ENV Policy 1.16.2: Continue to designate and post parking restrictions at public boat ramps, limiting the number of spaces available for vehicles and trailers. Vehicles and trailers parked in non-designated areas shall be in violation.~~

~~ENV Policy 1.17.2: Aquatic weed control shall be limited to those situations where navigation of the river by small boats is restricted, and where potable water intakes are impeded.~~

ENV Policy ~~1.17.3~~ 3.8.2: ~~Support the recommendations of the Florida Fish and Wildlife Conservation Commission received for consideration during plan review processes, for preventing or mitigating~~

**Proposed Changes to Hillsborough River Master Plan  
City of Tampa Comprehensive Plan  
Environmental Section**

~~potential development impacts on fish and wildlife resources.~~ Coordinate with the Florida Fish and Wildlife Conservation Commission to prevent or mitigate potential development impacts on fish and wildlife resources.

ENV Policy ~~1.17.10 3.8.7:~~ ~~Archaeological sites along the Hillsborough River shall be evaluated in terms of State of Florida or federal criteria to determine eligibility for listing on the National Register of Historic Places. Eligible sites shall be preserved or excavated and documented prior to destruction.~~ Preserve and conserve archaeological sites.



**Hillsborough River  
Interlocal Planning Board  
& Technical Advisory Council**

**Agenda Item 8. A. Minor Work Permit No. 76094 (EPC)**

**Attachments:**

1. Minor Work Permit Application



**Plan Hillsborough**  
[planhillsborough.org](http://planhillsborough.org)  
[planner@plancom.org](mailto:planner@plancom.org)  
813 - 272 - 5940  
601 E Kennedy Blvd  
18<sup>th</sup> floor  
Tampa, FL, 33602

**COMMISSION**

Joshua Wostal CHAIR  
Harry Cohen VICE-CHAIR  
Donna Cameron Cepeda  
Ken Hagan  
Pat Kemp  
Gwendolyn “Gwen” W. Myers  
Michael Owen



**DIRECTORS**

Janet D. Lorton EXECUTIVE DIRECTOR  
Elaine S. DeLeeuw ADMIN DIVISION  
Sam Elrabi, P.E. WATER DIVISION  
Diana M. Lee, P.E. AIR DIVISION  
Rick Muratti, Esq. LEGAL DEPT  
Steffanie L. Wickham WASTE DIVISION  
Sterlin Woodard, P.E. WETLANDS DIVISION

April 27, 2023

RD RWD Tampa LLC, Trustee (Sent via email)  
c/o Arturo Peña  
[Arturo@relatedgroup.com](mailto:Arturo@relatedgroup.com)  
2850 Tigertail Avenue, Suite 800  
Miami, FL 33133

Permittee: **RD RWD TAMPA LLC, TRUSTEE**  
Permit Number: **76094**  
Type of Permit: **INTENT TO ISSUE MINOR WORK PERMIT FOR  
A REPLACEMENT SEAWALL**  
Project Address: **102 S. PARKER STREET, TAMPA, FL 33606**  
Issuance Date: **MAY 22, 2023**  
Expiration Date: **MAY 22, 2026**

Dear Arturo Peña:

This Intent to Issue the Minor Work Permit (Permit) for a replacement seawall is issued to RD RWD Tampa LLC, Trustee (Permittee) by the Environmental Protection Commission of Hillsborough County (EPC) on behalf of the Tampa Port Authority (TPA). The TPA delegated this regulatory authority to the EPC in 2009. Please review this document and attachments carefully, paying particular attention to the conditions and approved drawings. **NO CONSTRUCTION ACTIVITY SHALL OCCUR in wetlands or other surface waters until May 22, 2023.**

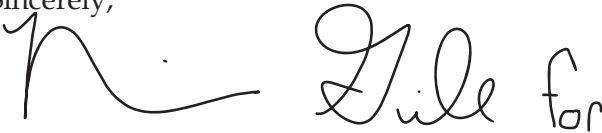
The EPC reserves the right to stop this Permit from becoming effective under any of the following circumstances: (1) if the EPC revokes the Permit pursuant to Section 1-2.052, Rules of the EPC; (2) if a “Notice of Appeal” or “Request for Extension of Time to File a Notice of Appeal” under Part IV of Section 1-2, Rules of the EPC (See NOTICE OF RIGHTS) is timely filed; or (3) if any applicable Federal governmental agency objects to verification that the activity qualifies for the United States Army Corp’s of Engineers’ State Programmatic General Permit. The Permittee shall be noticed in writing if any of these occur. No construction activity may occur until such time as the issue is resolved and the Permit becomes effective. It is possible in some circumstances for the Permit to be challenged after the initial construction date. Please contact the EPC Legal Department if you have any questions regarding this process.



This Permit authorizes the above named permittee, hereinafter referred to as the Permittee, to perform the described work on wetlands and/or other surface waters, on or adjacent to submerged lands under the regulatory or proprietary jurisdiction of the TPA. This Permit addresses activities regulated under the TPA Submerged Lands Management Rules and EPC Wetland Rule Chapter 1-11, Rules of the EPC. This work shall be accomplished in accordance with the general and specific conditions contained in this Permit. This Permit shall expire on the date noted in this Permit and shall be valid until it expires or such time as it is amended, replaced, or revoked in writing.

Acceptance of this Permit constitutes acceptance of all the attached conditions and the project drawings. Compliance with all conditions is necessary for the Permit to be considered valid. Should you have objections to any of these conditions, please see the attached **NOTICE OF RIGHTS** detailing the appeal process.

Sincerely,

Handwritten signature of Sterlin K. Woodard, P.E. The signature is written in black ink and includes the name "Sterlin K. Woodard" followed by "P.E." and "for".

Sterlin K. Woodard, P.E. – Division Director  
EPC Wetlands Division

Iam/ mpg  
Enclosures  
ec:

Corporal Marc Wilder - [mwilder@teamhcsso.com](mailto:mwilder@teamhcsso.com)  
Brenda Greenwald - [greenwaldb@hcpafl.org](mailto:greenwaldb@hcpafl.org)  
SWFWMD - [ERPAgencyCoordination@swfwmd.state.fl.us](mailto:ERPAgencyCoordination@swfwmd.state.fl.us)  
Breedlove, Dennis & Associates, Inc. - [drivera@bda-inc.com](mailto:drivera@bda-inc.com)

cc: City of Tampa Public Works and Utility Services



Janet D. Lorton, Executive Director

# PERMIT

**PERMIT NUMBER:** 76094

**PERMITTEE:** RD RWD TAMPA LLC, TRUSTEE  
2850 TIGERTAIL AVENUE, SUITE 800  
MIAMI, FL 33133

**AGENT:** BREEDLOVE, DENNIS & ASSOCIATES, INC.  
CHRISTOPHER HARRINGTON  
330 WEST CANTON AVENUE  
WINTER PARK, FL 32789

**PROJECT DESCRIPTION:** INSTALLATION OF APPROXIMATELY 355 LINEAR FEET OF STEEL SHEET PILE IN FRONT OF THE EXISTING SEAWALL PURSUANT TO PERMIT EXHIBITS AND CONDITIONS

**PROJECT LOCATION:** 102 SOUTH PARKER STREET, TAMPA, FL 33606 / HILLSBOROUGH RIVER

**DATE OF ISSUE:** MAY 22, 2023

**EXPIRATION DATE:** MAY 22, 2026

**THIS PERMIT CARD SHALL BE PROMINENTLY DISPLAYED AT THE WORKSITE. FOR QUESTIONS CALL THE WETLANDS DIVISION (813) 627-2600.**

ENVIRONMENTAL PROTECTION COMMISSION  
MINOR WORK PERMIT No. - 76094  
SPECIFIC CONDITIONS  
May 22, 2023

1. This Permit authorizes the installation of 355 linear feet of steel sheet pile in front of the existing seawall.
2. Be advised, if the proposed activity approved by this Permit is altered, a modification to this Permit with applicable application and fee may be required. Modifications include, but are not limited to, changes to the footprint of the proposed activity or adding structures such as: floating vessel platforms, floating docks, roofs, canopy covers, personal watercraft (PWC) lifts, etc. Modifications require review by EPC.
3. **The enclosed Permit Card shall be conspicuously displayed at the project site once work on this project has been initiated and shall remain so displayed until the project has been completed. Within fifteen (15) days of completion of this project, EPC is to be notified via email [wetlandscompliance@epchc.org](mailto:wetlandscompliance@epchc.org).**

**SEAWALL CONSTRUCTION SPECIFIC CONDITIONS**

4. The seawall shall be constructed as depicted per EPC approved Permit exhibits A-1 through A-7. **The proposed seawall height, including that of the cap, is not a part of this Permit and seawall height is not regulated by the EPC or TPA. The proposed location of the depicted tie rods, deadmen, and anchors associated with the seawall is not regulated by the EPC or TPA.**
5. The seawall shall be placed within the property limits as depicted per EPC approved Permit exhibits A-1, A-3, and A-5.
6. The replacement seawall shall be constructed within eighteen (18) inches face to face of the original vertical alignment of the existing seawall as depicted per EPC approved Permit exhibit A-6.
7. A portion of the new seawall will be placed in the old seawall footprint, as depicted per EPC approved permit exhibits A-5 and A-6.
8. During the installation of the replacement seawall, a floating turbidity curtain and/or silt fence shall be deployed waterward of the work site and attached from adjacent shoreline to adjacent shoreline. The turbidity curtain/ silt fence must remain in place until the work has ceased and any resultant construction-related turbidity has settled out. These measures should be removed as soon as water quality returns to sustainable background levels and / or all areas of disturbed soils are stabilized.
9. Removal of part or the entire existing seawall cap to facilitate the installation of new steel sheet pilings as repair to the existing seawall must be accomplished in a manner so that all debris, including but not limited to broken concrete and rebar, is completely removed from the waterward side of the new seawall and properly disposed of.

10. This Permit does not authorize the seawall installation to cover or obstruct the existing storm water outfall pipes observed during the EPC site visit and depicted on EPC approved Permit exhibit A-3 without a new storm water outfall pipe being installed as depicted on EPC approved Permit exhibits A-5, A-6, and A-7.
11. This Permit does not authorize any dredging activity.
12. This Permit does not authorize the placement of pilings or any other structures extraneous to the installation of the seawall.
13. All wetland vegetation, including but not limited to mangroves, must be preserved during all construction authorized under this Permit. No mangrove removal is allowed. Further, no impacts to existing submerged aquatic vegetation, coral communities or oyster beds shall occur under this Permit.

#### **SOUTHWEST FLORIDA WATER MANAGEMENT DISTRICT JURISDICTION**

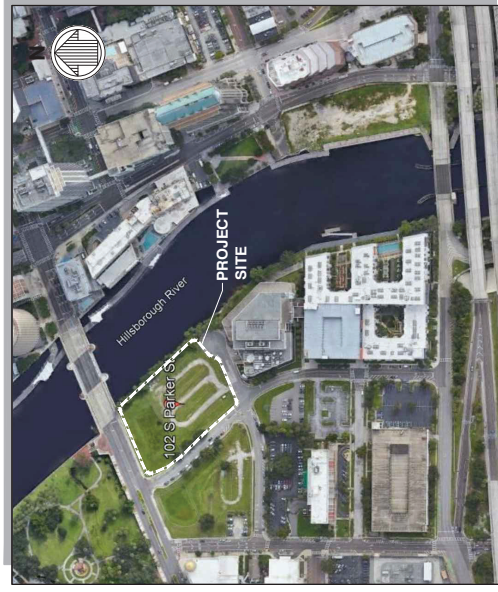
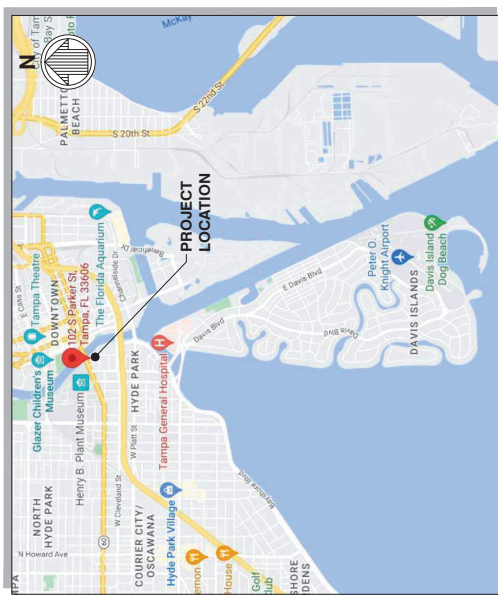
Authorization for the proposed activity may be required from the Southwest Florida Water Management District (SWFWMD) as the site is located within an area that was issued under an Environmental Resource Permit. For additional information please contact Al Gagne at (813) 985-7481 ext. 4352. Per the email attached the Federal Authorization will also be processed by SWFWMD.

**EPC PERMIT**  
**A-1 MPG EXHIBIT**

# RIVERWALK DISTRICT BULKHEAD REPLACEMENT

## SECTION 24, TOWNSHIP 29S, RANGE 18E

102 SOUTH PARKER STREET  
 TAMPA, FLORIDA 33606



INDEX NO.	SHEET NO.	SHEET TITLE
1	G-001	COVER SHEET
2	G-002	GENERAL NOTES AND ABBREVIATIONS
3	V-101	EXISTING CONDITIONS AND DEMOLITION PLAN
4	V-301	EXISTING BULKHEAD AND DEMOLITION SECTIONS
5	S-101	BULKHEAD PLAN
6	S-301	BULKHEAD SECTIONS
7	S-501	BULKHEAD DETAILS

**RELATED**

DATE	DESCRIPTION

**RIVERWALK DISTRICT  
 BULKHEAD REPLACEMENT**

**COVER SHEET**

Designed By: N. MULLY  
 Checked By: M. OFFERTT & M. HONOR  
 Date: 2022-10-17  
 Project No.: 1110 SHEET 7

Prepared For: **RELATED**  
 2850 TIGERCATAL AVE.  
 SUITE 800  
 MIAMI, FL 33133  
 (305) 460-9900  
 LIC: EB-004877

Prepared By: **moffatt & nichol**  
 501 E KENNEDY BLVD  
 SUITE 1910  
 TAMPA, FL 33602  
 813-258-8818  
 LIC: EB-004877

Sheet Reference No. **G-001**

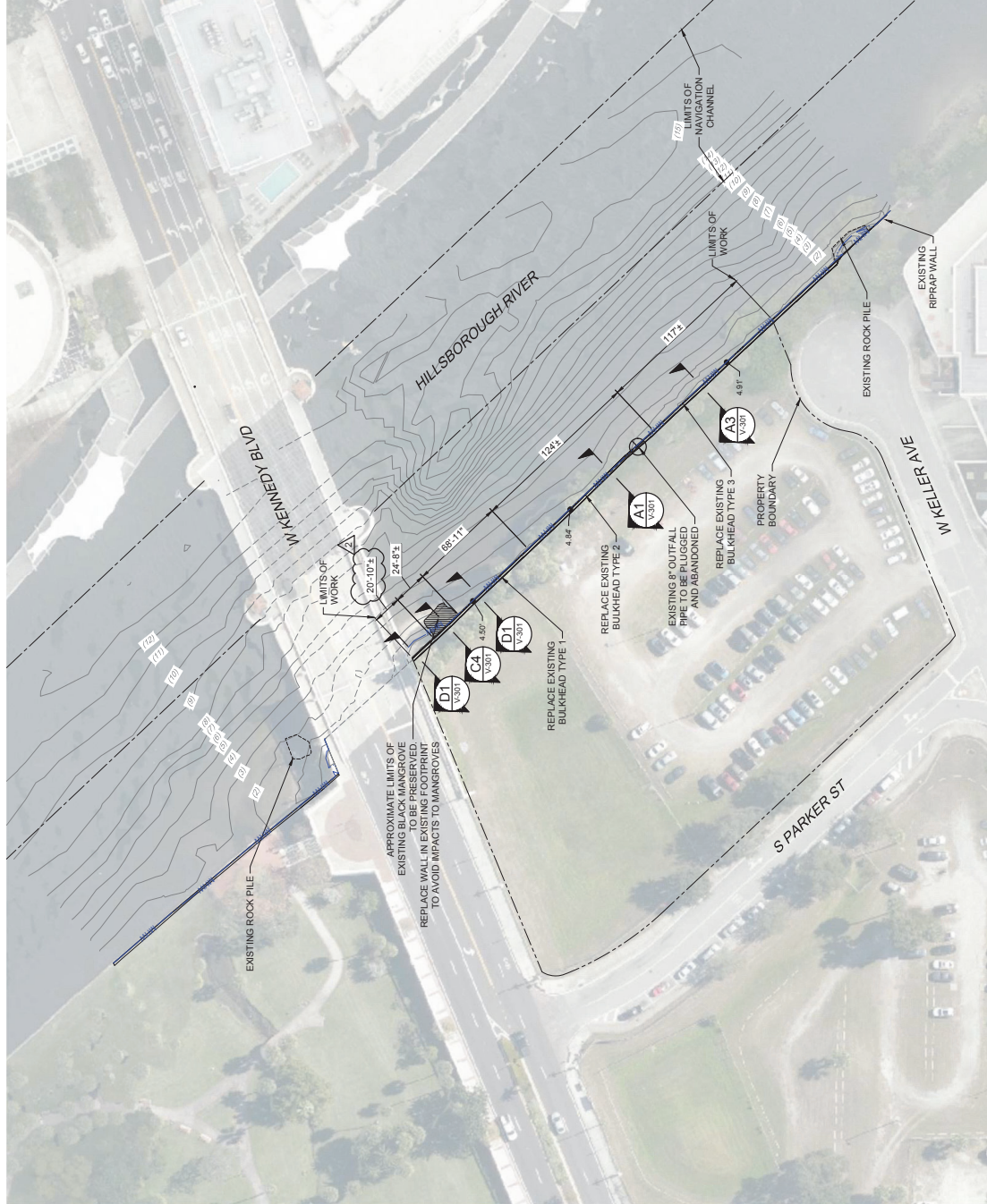
INDEX: 1 OF 7

**Nicole M Shaw**  
 Digitally signed by Nicole M Shaw  
 Date: 2023.01.18 21:36:40 -05'00'

PERMIT DRAWINGS  
 ISSUED: 2022-12-22



**RECEIVED**  
**APR 4 2023**  
 EPC of H.C.  
 WETLANDS



**QUANTITY**  
 BULKHEAD REPLACEMENT 395.5 LF



- LEGEND**
- PROPERTY LINE
  - LIMITS OF NAVIGATION
  - (B) --- CONTOUR LINE
  - 4.50' SPOT ELEVATION AT TOP OF EXISTING PILE CAP
  - MHW — MEAN HIGH WATER LINE
  - ⊗ PIPE OUTFALL
  - ▨ MANGROVE CANOPY



**PERMIT DRAWINGS**  
 ISSUED: 2023-02-07

**Nicole M Shaw**  
 Digitally signed  
 by Nicole M Shaw  
 Date: 2023.04.04 08:44:03 -04'00'

**EPC PERMIT A-3 MPG EXHIBIT**

**REVISED**  
 Replaces Drawings Received: JAN 20, 2023

<b>RELATED</b> 	7 BULKHEAD LENGTH 395.5 LF
	8 9 10 11 12 13 14 15 16 17 18 19 20 21 22 23 24 25 26 27 28 29 30 31 32 33 34 35 36 37 38 39 40 41 42 43 44 45 46 47 48 49 50 51 52 53 54 55 56 57 58 59 60 61 62 63 64 65 66 67 68 69 70 71 72 73 74 75 76 77 78 79 80 81 82 83 84 85 86 87 88 89 90 91 92 93 94 95 96 97 98 99 100

<b>EXISTING CONDITIONS AND DEMOLITION PLAN</b> <b>RIVERWALK REPLACEMENT BULKHEAD REPLACEMENT</b>	
-----------------------------------------------------------------------------------------------------	--



Date: 2023-10-17 Drawn By: A Check By: J	Date: 2023-10-17 Drawn By: J Check By: A
------------------------------------------------	------------------------------------------------

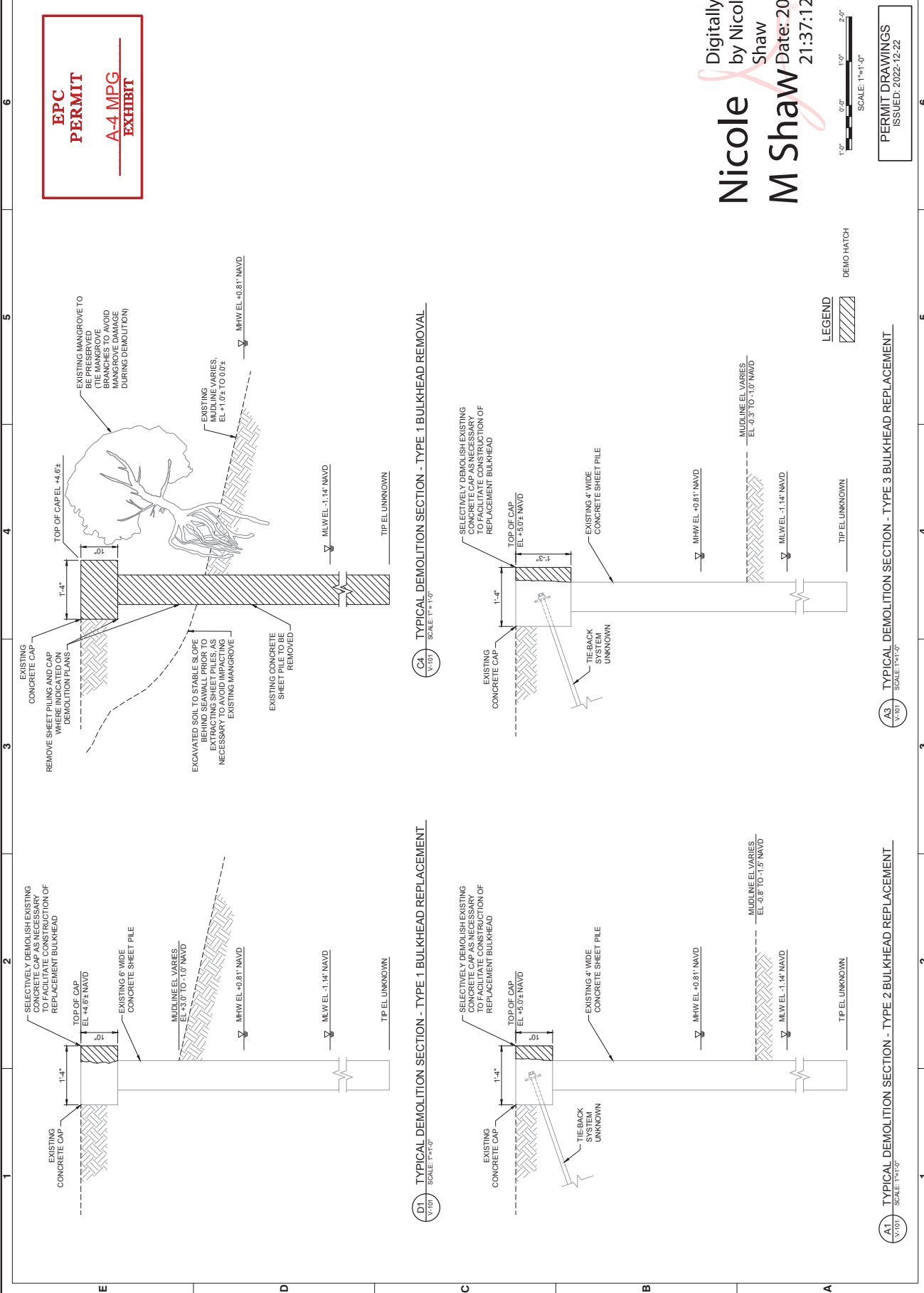
Project Name: 111 (D SHEET) Drawing Title: RIVERWALK REPLACEMENT BULKHEAD REPLACEMENT Drawing Scale: 1"=40' Date: 2023-10-17 Drawn By: J Check By: A	Project Name: 111 (D SHEET) Drawing Title: RIVERWALK REPLACEMENT BULKHEAD REPLACEMENT Drawing Scale: 1"=40' Date: 2023-10-17 Drawn By: J Check By: A
---------------------------------------------------------------------------------------------------------------------------------------------------------------------	---------------------------------------------------------------------------------------------------------------------------------------------------------------------

501 E KENNEDY BLVD SUITE 1910 TAMPA, FL 33602 REGISTRY NO. 00004877 WWW.MOFFATTINC.COM MOFFATT & MOFFATT PROFESSIONAL ENGINEERS STATE OF FLORIDA No. 79538	Project Name: 111 (D SHEET) Drawing Title: RIVERWALK REPLACEMENT BULKHEAD REPLACEMENT Drawing Scale: 1"=40' Date: 2023-10-17 Drawn By: J Check By: A
---------------------------------------------------------------------------------------------------------------------------------------------------------------------------------	---------------------------------------------------------------------------------------------------------------------------------------------------------------------

This item has been electronically signed and sealed by Nicole M Shaw, PE, Professional Engineer, State of Florida. Digital Signatures and date are not considered signed and sealed, and the signature must be verified on any electronic copies.

DRAWING SCALES SHOWN BASED ON 22"x34" DRAWING  
 INDEX: 3 OF 7  
 SHEET REFERENCE NO. V-101

<b>RELATED</b>		<b>EXISTING BULKHEAD AND RIVERWALK REPLACEMENT</b>	<b>DEMOLITION BULKHEAD AND RIVERWALK DISTRICT</b>		
		<b>Permit Drawings</b> ISSUED: 2022-12-22	Digitally signed by Nicole M Shaw Date: 2023.01.18 21:37:12 -05'00'	Sheet Reference No. <b>V-301</b> INDEX: 4 OF 7	SCALE: 1"=1'-0" DEMO HATCH

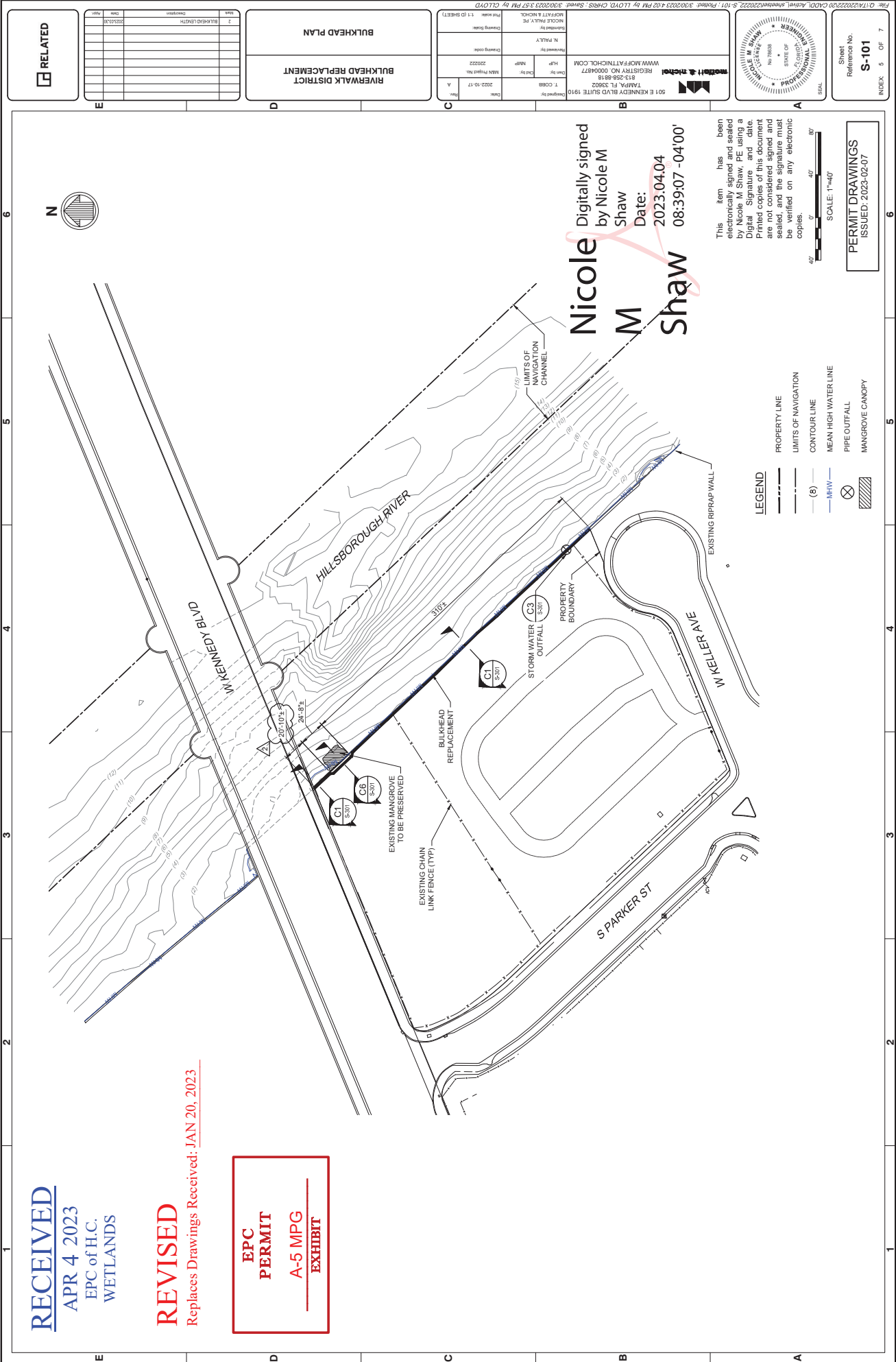


DRAWING SCALES SHOWN BASED ON 22"x34" DRAWING

**RECEIVED**  
 APR 4 2023  
 EPC of H.C.  
 WETLANDS

**REVISED**  
 Replaces Drawings Received: JAN 20, 2023

**EPC  
 PERMIT  
 A-5 MPG  
 EXHIBIT**



**Nicole M Shaw**  
 Digitally signed by Nicole M Shaw  
 Date: 2023.04.04 08:39:07 -04'00'

This item has been electronically signed and sealed by Nicole M Shaw, PE using a Digital Signature and date. Printed copies of this document are not considered signed and sealed, and the signature must be verified on any electronic copies.

- LEGEND**
- PROPERTY LINE
  - LIMITS OF NAVIGATION
  - CONTOUR LINE
  - MEAN HIGH WATER LINE
  - PIPE OUTFALL
  - MANGROVE CANOPY

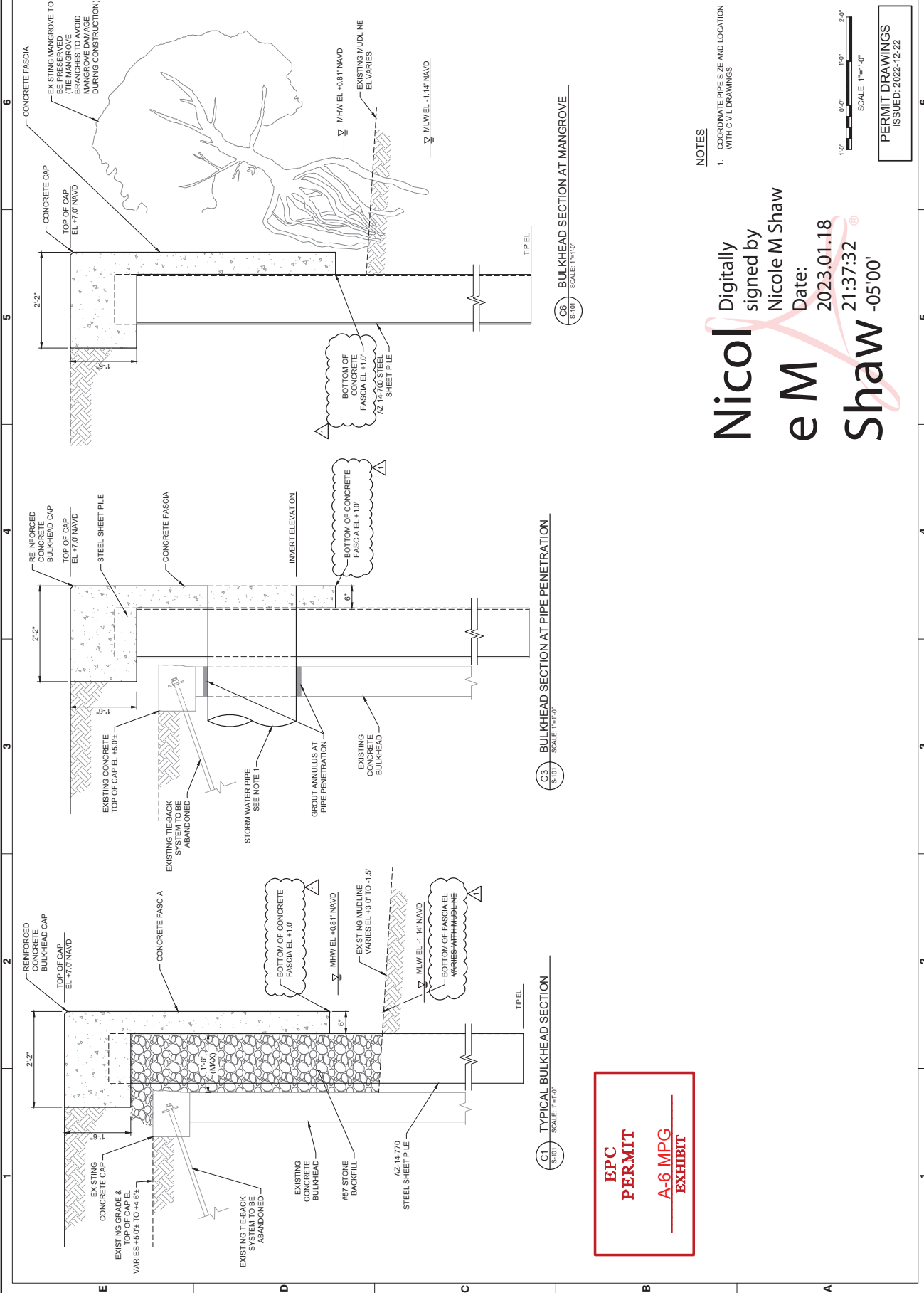
SCALE: 1"=40'

**PERMIT DRAWINGS**  
 ISSUED: 2023-02-07

<b>RELATED</b> <input type="checkbox"/>	7 BULKHEAD LENGTH DATE: 2023.02.07	<b>BULKHEAD PLAN</b> <b>RIVERWALK DISTRICT</b>	Drawing Title: BULKHEAD PLAN Drawing No.: 2023.02.07	<b>nicole m shaw</b> REGISTERED PROFESSIONAL ENGINEER TAMPA, FL 33602 WWW.MOF-ATTN:CHLOE.COM	Drawing Date: 2023-10-17 Date: 2023-10-17
	8 BULKHEAD WIDTH DATE: 2023.02.07		Drawing No.: 2023.02.07 Date: 2023-10-17		Drawing Title: BULKHEAD PLAN Drawing No.: 2023.02.07

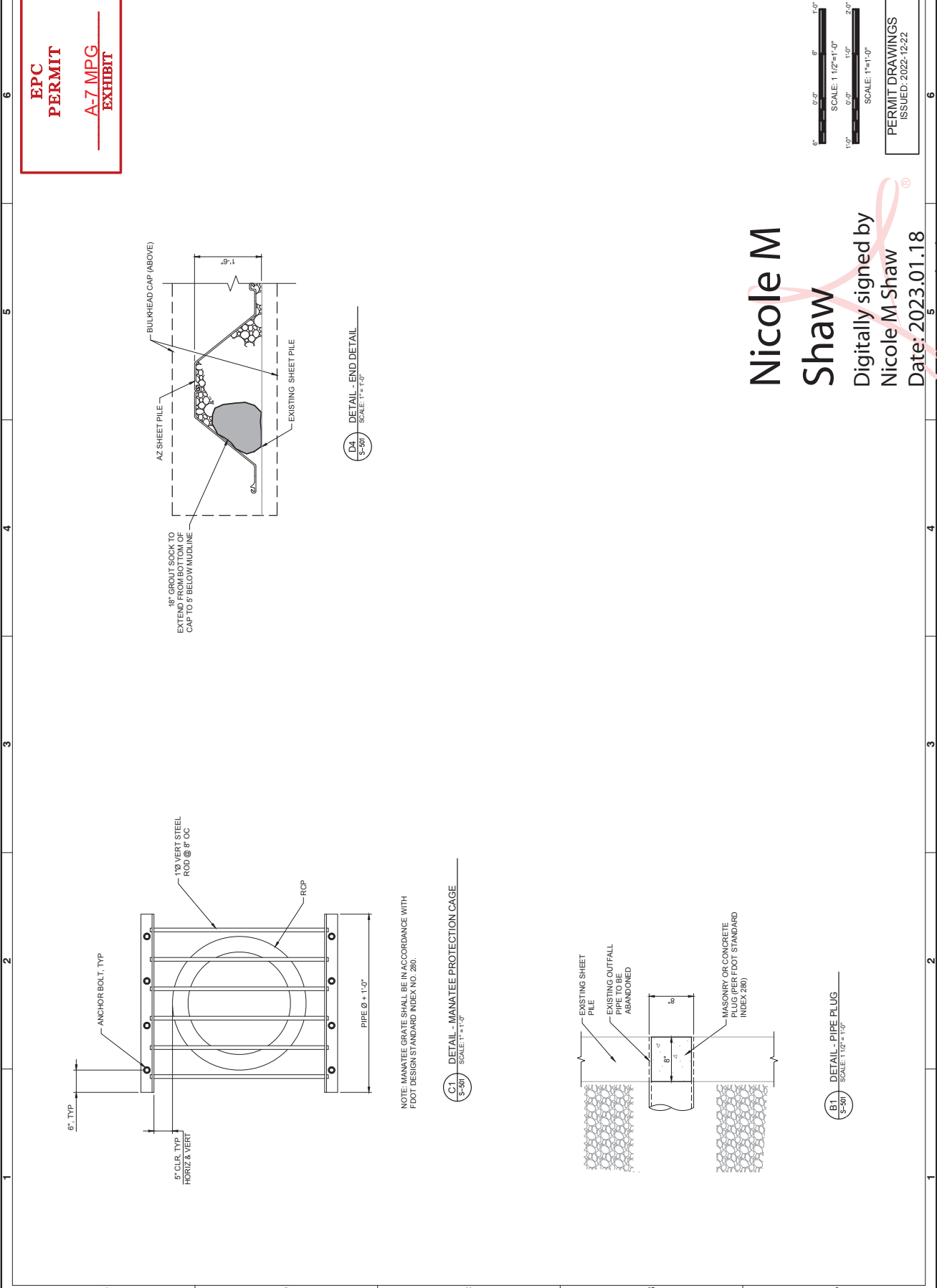
DRAWING SCALES SHOWN BASED ON 22"x34" DRAWING






**Nicol** Digitally signed by  
**eM** Nicole M Shaw  
**Shaw** Date: 2023.01.18 21:37:32  
 -05'00'

**EPC PERMIT A-6 MPG EXHIBIT**



**EPC PERMIT**  
**A-7 MPG EXHIBIT**

<b>RELATED</b> <input type="checkbox"/>	<b>RIVERWALK REPLACEMENT</b> <b>RIVERWALK DISTRICT</b>	<table border="1" style="width: 100%; border-collapse: collapse;"> <tr> <td style="width: 15%;">Date</td> <td>2023-10-17</td> <td style="width: 15%;">Drawn by</td> <td>A</td> </tr> <tr> <td>T. COBB</td> <td></td> <td>Checked by</td> <td>N. MELVY</td> </tr> <tr> <td>MAN Project No.</td> <td>202223</td> <td>Client</td> <td>M&amp;P</td> </tr> <tr> <td>Sheet</td> <td>11</td> <td>Project</td> <td>1110 SHEET3</td> </tr> </table>	Date	2023-10-17	Drawn by	A	T. COBB		Checked by	N. MELVY	MAN Project No.	202223	Client	M&P	Sheet	11	Project	1110 SHEET3	 <p>501 E KENNEDY BLVD SUITE 1910          TAMPA, FL 33602          REGISTRY NO. 00004877          WWW.MOFFATTINCHOL.COM          813-258-9818</p>
Date	2023-10-17	Drawn by	A																
T. COBB		Checked by	N. MELVY																
MAN Project No.	202223	Client	M&P																
Sheet	11	Project	1110 SHEET3																
		<b>Sheet</b> <b>Reference No.</b> <b>S-501</b>	<b>INDEX:</b> 7 OF 7																

Nicole M Shaw

Digitally signed by  
 Nicole M Shaw  
 Date: 2023.01.18 21:37:42 -05'00'

**PERMIT DRAWINGS**  
 ISSUED: 2022-12-22



DRAWING SCALES SHOWN BASED ON 22"x34" DRAWING



501 E Kennedy Boulevard, Suite 1910  
Tampa, FL 33602

(813) 258-8818  
www.moffattnichol.com



February 13, 2023

**Environmental Protection Commission**

Wetlands Division  
3629 Queen Palm Drive  
Tampa, FL 33619

Subject: **Riverwalk District Bulkhead Replacement – 102 South Park Street (EPC App #76094)**

Dear Mr. Giles,

The proposed mixed-use Riverwalk District development at 102 South Parker Street along the west bank of the Hillsborough River in Tampa, Florida requires the replacement of the existing, deteriorating concrete bulkhead to extend the life of the bulkhead and raise the grade of the site to support the proposed site grades. This bulkhead replacement is associated with EPC application number 76094.

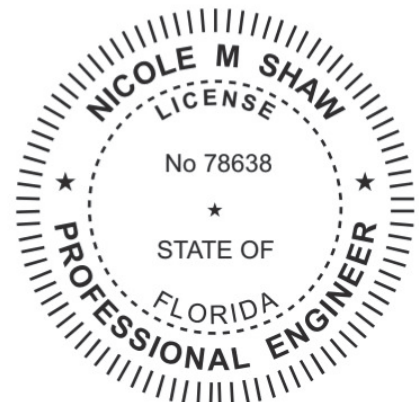
Moffatt & Nichol (M&N) was retained by RD RWD Tampa LLC, to design the replacement for the existing bulkhead to retain the earth loads for the proposed upland grade and support the anticipated pedestrian live loads for the river walk segment located adjacent to the bulkhead on the landside. The close proximity of structures behind the wall precludes the use of an anchored bulkhead system since the tie-backs would conflict with other structural foundations. To account for this, a cantilever sheet pile bulkhead was designed to support the design loads without the need of a tie-back system. Due to the structural demands on the wall, a steel sheet pile was needed in lieu of alternate materials like vinyl which are narrower but offer significantly less capacity. The design requires the use of the smallest, common steel wall section (NZ 14) which measures 13.39 inches deep. The sheet piles will be installed as close as practicable to the existing wall, and the waterward face of the sheet piles will extend no further than 18 inches from the waterward face of the existing sheet pilings.

Once installed, this bulkhead segment will become an integral part of the City of Tampa’s West River Walk development. Both durability and longevity played a decision into extending the concrete cap on the waterside of the wall to the Mean High Water Line, to protect the exposed portion of the steel sheet piles (above water) from the salt spray that leads to corrosion and extending their serviceable life. Due to the reinforcement and clear cover requirements for concrete in an aggressive marine environment, the concrete fascia needs to be a minimum of 6-inches thick, the same as the concrete cap. The fascia will not extend further waterward than the concrete cap.

Thanks,

Nicole Shaw, PE  
Moffatt & Nichol

**Nicole M Shaw**  
Digitally signed  
by Nicole M  
Shaw  
Date: 2023.02.13  
19:20:40 -05'00'



## MWP09 - Minor Work Permit Application Result #13805583

epcinfo at epchc.org <noreply@fs2.formsite.com>

Tue 11/29/2022 12:38 PM

To: Gile, Michael <gilem@epchc.org>

<b>NEW</b>	\$650 Review Fee
<b>Fee Amount:</b>	650.00
<b>ItemCode</b>	MWP
<b>Email Address to send Invoice to:</b>	<a href="mailto:drivera@bda-inc.com">drivera@bda-inc.com</a>
<b>SecKey</b>	i32Uej-ddxWWEjdna344s2
<b>Item #211</b>	The proposed activity is the replacement of approximately 357 feet of existing seawall under section 403.813(1)(e), F.S., where the seawall replacement involves only minimal backfilling to level the land directly associated with the restoration and does not involve land reclamation as the primary project purpose. The proposed seawall replacement and restoration shall be no more than 18 inches waterward of its previous location, as measured from the waterward face of the existing seawall to the face of the restored seawall.
<b>Owner First Name</b>	Arturo
<b>Owner Last Name</b>	Pena
<b>Company Name &amp; Title (if applicable)</b>	RD RWD TAMPA LLC TRUSTEE
<b>Mailing Address</b>	2850 Tigertail Avenue Suite 800
<b>City</b>	Miami
<b>State</b>	FL
<b>Zip Code</b>	33133
<b>Owner Telephone Number(s)</b>	305-533-0007
<b>Email Address</b>	<a href="mailto:arturo@relatedgroup.com">arturo@relatedgroup.com</a>
<b>Are you using an agent?</b>	Yes
<b>Item #148</b>	Request to be present at site inspection.
<b>Agent First Name</b>	Christopher

<b>Agent Last Name</b>	Harrington
<b>Company Name (if applicable)</b>	Breedlove, Dennis & Associates, Inc.
<b>Street Address</b>	330 West Canton Avenue
<b>City</b>	Winter Park
<b>State</b>	FL
<b>Zip Code</b>	32789
<b>Telephone Number(s)</b>	14072527695
<b>Fax</b>	407-657-7008
<b>Email Address</b>	<a href="mailto:drivera@bda-inc.com">drivera@bda-inc.com</a>
<b>Site Street Address</b>	102 South Parker Street
<b>City</b>	Tampa
<b>State</b>	FL
<b>Zip Code</b>	33606
<b>Folio Numbers(s) of Site</b>	194704-0000
<b>Parcel ID:</b>	
<b>Section</b>	
<b>Required</b>	24
<b>Township</b>	
<b>Required</b>	29 S
<b>Range</b>	
<b>Required</b>	18E
<b>Name of Water Body / Waterway at Proposed Project</b>	Hillsborough River
<b>Proposed:</b>	Private Multi-Family Dwelling (Condominium, Apartment, etc.)
<b>Owner</b>	Tampa Port Authority
<b>Check to confirm that your project is not</b>	Confirmed

located in critical habitat for smalltooth sawfish or gulf sturgeon, as applicable.

---

<b>Check to confirm that if your project is located in waters accessible to manatees, the project shall not affect or will not directly or indirectly likely adversely affect manatees, as applicable.</b>	Confirmed
------------------------------------------------------------------------------------------------------------------------------------------------------------------------------------------------------------	-----------

---

<b>A. Structures</b>	Maintenance / Replacement
----------------------	---------------------------

---

<b>2) Seawalls, Rip-Rap, Revetments, or Other Shoreline Stabilization (check applicable boxes)</b>	Seawall
----------------------------------------------------------------------------------------------------	---------

---

**Item #237**

---

**Length of Shoreline at Site (in linear feet)**

---

(if applicable)	~357'
-----------------	-------

---

**Length of Work Proposed Along Shoreline (in linear feet)**

---

(if applicable)	~357'
-----------------	-------

---

**Seawall Vertical Height (in feet)**

---

(if applicable)	5'-7'
-----------------	-------

---

**Rip-Rap Slope - Horizontal Distance (in feet)**

---

(if applicable)	NA
-----------------	----

---

**Rip-Rap Slope - Vertical Height (in feet)**

---

(if applicable)	NA
-----------------	----

---

**Type of Material**

---

(if applicable)	Steel Sheet Pile
-----------------	------------------

---

<b>Dredged Volume (in cubic feet)</b>	
(if applicable)	NA
<b>Filled Volume (in cubic feet)</b>	
(if applicable)	NA
<b>To Begin On:</b>	01/02/2023
<b>To Be Completed By:</b>	03/03/2023
<b>Enter any additional remarks for the project.</b>	Along the north portion of the existing bulkhead, one black mangrove is rooted near the base of the waterward side of the existing bulkhead. The proposed plan for the replacement bulkhead within the vicinity of the mangrove is to utilize excavated soil to stabilize the slope behind the bulkhead prior to extracting sheet piles as necessary to avoid impacting the existing mangrove. The proposed plan is to preserve the existing mangrove.
<b>Public Interest Comment Box:</b>	The proposed project is not contrary to the public interest based on the criteria outlined in Section II. D.1. of the Tampa Port Authority Submerged Lands Management Rules.
<b>1st Adjacent Property Owner Name(s)</b>	TRIBUNE COMPANY
<b>Mailing Address</b>	545 E JOHN CARPENTER FWY STE 700
<b>City</b>	IRVING
<b>State</b>	TX
<b>Zip Code</b>	75062
<b>2nd Adjacent Owner</b>	University of Tampa
<b>Mailing Address</b>	401 W KENNEDY BLVD
<b>City</b>	TAMPA
<b>State</b>	FL
<b>Zip Code</b>	33606
<b>OWNER / APPLICANT ACKNOWLEDGEMENT</b>	I am an agent filling out the application on behalf of the owner.
<b>Please download, complete and sign the Owner's Authorization Form. Then upload the</b>	<a href="#">Owner Applicant General Authority.pdf (87 KB)</a>



**Hillsborough River  
Interlocal Planning Board  
& Technical Advisory Council**

**Agenda Item 8. B. Minor Work Permit No. 76581 (EPC)**

**Attachments:**

1. Minor Work Permit Application



**Plan Hillsborough**  
[planhillsborough.org](http://planhillsborough.org)  
[planner@plancom.org](mailto:planner@plancom.org)  
813 - 272 - 5940  
601 E Kennedy Blvd  
18<sup>th</sup> floor  
Tampa, FL, 33602



**COMMISSION**

Joshua Wostal CHAIR  
Harry Cohen VICE-CHAIR  
Donna Cameron Cepeda  
Ken Hagan  
Pat Kemp  
Gwendolyn “Gwen” W. Myers  
Michael Owen



**DIRECTORS**

Janet D. Lorton EXECUTIVE DIRECTOR  
Elaine S. DeLeeuw ADMIN DIVISION  
Sam Elrabi, P.E. WATER DIVISION  
Diana M. Lee, P.E. AIR DIVISION  
Rick Muratti, Esq. LEGAL DEPT  
Steffanie L. Wickham WASTE DIVISION  
Sterlin Woodard, P.E. WETLANDS DIVISION

April 5, 2023

Josephine Greco, Trustee (Sent via email)

[jeminvestmentsal@aol.com](mailto:jeminvestmentsal@aol.com)  
501 N. Morgan St., Suite 202  
Tampa, FL 33602

Permittee:	<b>JOSEPHINE GRECO, TRUSTEE</b>
Permit Number:	<b>76581</b>
Type of Permit:	<b>INTENT TO ISSUE MINOR WORK PERMIT FOR INSTALLATION OF APPROXIMATELY 120 LINEAR FEET OF VINYL SHEET PILE IN FRONT OF THE EXISTING SEAWALL PURSUANT TO PERMIT EXHIBITS AND CONDITIONS</b>
Project Address:	<b>3208 N. PERRY AVE., TAMPA, FL 33603</b>
Issuance Date:	<b>APRIL 30, 2023</b>
Expiration Date:	<b>APRIL 30, 2026</b>

Dear Josephine Greco:

This Intent to Issue the Minor Work Permit (Permit) for approximately 120 linear feet of replacement seawall installation is issued to Josephine Greco, Trustee (Permittee) by the Environmental Protection Commission of Hillsborough County (EPC) on behalf of the Tampa Port Authority (TPA). The TPA delegated this regulatory authority to the EPC in 2009. Please review this document and attachments carefully, paying particular attention to the conditions and approved drawings. **NO CONSTRUCTION ACTIVITY SHALL OCCUR** in wetlands or other surface waters until April 30, 2023.

The EPC reserves the right to stop this Permit from becoming effective under any of the following circumstances: (1) if the EPC revokes the Permit pursuant to Section 1-2.052, Rules of the EPC; (2) if a “Notice of Appeal” or “Request for Extension of Time to File a Notice of Appeal” under Part IV of Section 1-2, Rules of the EPC (See NOTICE OF RIGHTS) is timely filed; or (3) if any applicable Federal governmental agency objects to verification that the activity qualifies for the United States Army Corp’s of Engineers’ State Programmatic General Permit. The Permittee shall be noticed in writing if any of these occur. No construction activity may occur until such time as the issue is resolved and the Permit becomes effective. It is possible in some circumstances for the Permit to be challenged after the initial construction date. Please contact the EPC Legal Department if you have any questions regarding this process.

This Permit authorizes the above named permittee, hereinafter referred to as the Permittee, to perform the described work on wetlands and/or other surface waters, on or adjacent to

submerged lands under the regulatory or proprietary jurisdiction of the TPA. This Permit addresses activities regulated under the TPA Submerged Lands Management Rules and EPC Wetland Rule Chapter 1-11, Rules of the EPC. This work shall be accomplished in accordance with the general and specific conditions contained in this Permit. This Permit shall expire on the date noted in this Permit and shall be valid until it expires or such time as it is amended, replaced, or revoked in writing.

Acceptance of this Permit constitutes acceptance of all the attached conditions and the project drawings. Compliance with all conditions is necessary for the Permit to be considered valid. Should you have objections to any of these conditions, please see the attached **NOTICE OF RIGHTS** detailing the appeal process.

Sincerely,

A handwritten signature in black ink that reads "Sterlin K. Woodard for". The signature is written in a cursive, flowing style.

Sterlin K. Woodard, P.E. - Division Director  
EPC Wetlands Division

sm/ mpg  
Enclosures  
ec:

Corporal Marc Wilder - [mwilder@teamhcso.com](mailto:mwilder@teamhcso.com)  
Brenda Greenwald - [greenwaldb@hcpafl.org](mailto:greenwaldb@hcpafl.org)  
Robert Barron - [spgp@usace.army.mil](mailto:spgp@usace.army.mil)  
Bay Dock Enterprise - [chantel@baydock.com](mailto:chantel@baydock.com)

cc: MJG Ventures LTD, Mr. Mac A. Greco Jr., 501 N. Morgan St., STE 202, Tampa, FL 33602  
City of Tampa Public Works & Utility Services, Mr. Brad L. Baird, 306 East Jackson Street,  
Tampa, FL 33602



Janet D. Lorton, Executive Director

# PERMIT

**PERMIT NUMBER:** 76581

**PERMITTEE:** JOSEPHINE GRECO, TRUSTEE  
501 N. MORGAN ST., SUITE 202  
TAMPA, FL 33603

**AGENT:** BAY DOCK ENTERPRISE  
KEVIN MCNAMARA  
9002 W. HILLSBOROUGH AVE.  
TAMPA, FL

**PROJECT DESCRIPTION:** INSTALLATION OF APPROXIMATELY 120 LINEAR FEET OF VINYL SHEET PILE IN FRONT OF THE EXISTING SEAWALL PURSUANT TO PERMIT EXHIBITS AND CONDITIONS

**PROJECT LOCATION:** 3208 N. PERRY AVE., TAMPA, FL 33603 /  
HILLSBOROUGH RIVER

**DATE OF ISSUE:** APRIL 30, 2023

**EXPIRATION DATE:** APRIL 30, 2026

**THIS PERMIT CARD SHALL BE  
PROMINENTLY DISPLAYED AT THE  
WORKSITE. FOR QUESTIONS CALL THE  
WETLANDS DIVISION (813) 627-2600.**

ENVIRONMENTAL PROTECTION COMMISSION  
MINOR WORK PERMIT No. - 76581  
SPECIFIC CONDITIONS  
April 30, 2023

1. This Permit authorizes the installation of approximately 120 linear feet of vinyl sheet pile in front of the existing seawall.
2. Be advised, if the proposed activity approved by this Permit is altered, a modification to this Permit with applicable application and fee may be required. Modifications include, but are not limited to, changes to the footprint of the proposed activity or adding structures such as: floating vessel platforms, floating docks, roofs, canopy covers, personal watercraft (PWC) lifts, etc. Modifications require review by EPC.
3. **The enclosed Permit Card shall be conspicuously displayed at the project site once work on this project has been initiated and shall remain so displayed until the project has been completed. Within fifteen (15) days of completion of this project, EPC is to be notified via email [wetlandscompliance@epchc.org](mailto:wetlandscompliance@epchc.org).**

**SEAWALL CONSTRUCTION SPECIFIC CONDITIONS**

4. The seawall shall be constructed as depicted per EPC approved Permit exhibits A-2, A-3 and A-4. **The dock structure depicted in the Permit exhibits is for illustration purposes only and is not approved as part of this Permit. Likewise, the proposed seawall height, including that of the cap, is not a part of this Permit and seawall height is not regulated by the EPC or TPA. The proposed location of the depicted tie rods, deadmen, and anchors associated with the seawall is not regulated by the EPC or TPA.**
5. The seawall shall be placed within the property limits as depicted per EPC approved Permit exhibits A-1, A-2, and A-3.
6. The replacement seawall shall be constructed within twelve (12) inches face to face of the original vertical alignment of the existing seawall as depicted per EPC approved Permit exhibit A-4.
7. During the installation of the replacement seawall, a floating turbidity curtain and/or silt fence shall be deployed waterward of the work site and attached from adjacent shoreline to adjacent shoreline. The turbidity curtain/ silt fence must remain in place until the work has ceased and any resultant construction-related turbidity has settled out. These measures should be removed as soon as water quality returns to sustainable background levels and / or all areas of disturbed soils are stabilized.
8. Removal of part or the entire existing seawall cap to facilitate the installation of new vinyl sheet pilings as repair to the existing seawall must be accomplished in a manner so that all debris, including but not limited to broken concrete and rebar, is completely removed from the waterward side of the new seawall and properly disposed of.
9. This Permit does not authorize the seawall installation to cover or obstruct any existing storm water outfall pipes.
10. This Permit does not authorize any dredging activity.

11. This Permit does not authorize the placement of pilings or any other structures extraneous to the installation of the seawall.
12. Removal of part of the existing dock structure to facilitate the installation of new vinyl sheet pilings as repair to the existing seawall must be accomplished in a manner so that all debris is properly disposed of and the release of turbid water offsite is prevented.
13. All wetland vegetation, including but not limited to mangroves, must be preserved during all construction authorized under this Permit. No mangrove removal is allowed. Further, no impacts to existing submerged aquatic vegetation, coral communities or oyster beds shall occur under this Permit.

#### **U.S. ARMY CORPS OF ENGINEERS SPGP DETERMINATION**

Your proposed activity as outlined in your application and attached drawings qualifies for Federal authorization pursuant to the State Programmatic General Permit VI-R1, and a SEPARATE permit or authorization will not be required from the Corps. Please note that the Federal authorization expires on July 27, 2026. However, your authorization may remain in effect for up to 1 additional year, if provisions of Special Condition 15 of the SPGP VI-R1 permit instrument are met. You, as permittee, are required to adhere to all General Conditions and Special Conditions that may apply to your project. Special conditions required for your project are attached. A copy of the SPGP VI-R1 with all terms and conditions and the General Conditions may be found at

<https://www.saj.usace.army.mil/Missions/Regulatory/Source-Book>.

## U.S. ARMY CORPS OF ENGINEERS SPGP SPECIAL CONDITIONS

**Note:** JAXBO (Jacksonville District's Programmatic Biological Opinion), referenced throughout, may be found online in the Jacksonville District Regulatory Division Sourcebook, or at <http://cdm16021.contentdm.oclc.org/utils/getfile/collection/p16021coll3/id/577>.

The SPGP V1-R1 instrument and all attachments may be found online through the Sourcebook, or at <https://www.saj.usace.army.mil/SPGP/>

In addition to the conditions specified above, the following Special Conditions apply to all projects reviewed and/or authorized under the SPGP V1-R1.

### **Special Conditions for all Projects**

1. Authorization, design and construction must adhere to the terms of the SPGP VI-R1 instrument including the General Conditions for All Projects, Special Conditions for All Projects, Applicable activity-specific special conditions, Procedure and Work Authorized sections.
2. Design and construction must adhere to the PDCs for In-Water Activities (Attachment 28, from PDCs AP.7 through AP11, inclusive, of JAXBO) (Reference: JAXBO PDC AP.1.).
3. All activities must be performed during daylight hours (Reference: JAXBO PDC AP.6.).
4. For all projects involving the installation of piles, sheet piles, concrete slab walls or boatlift I-beams (Reference Categories A, B and C of JAXBO PDCs for In-Water Noise from Pile and Sheet Pile Installation, page 86):
  - a. Construction methods limited to trench and fill, pilot hole (auger or drop punch), jetting, vibratory, and impact hammer (however, impact hammer limited to installing no more than 5 per day).
  - b. Material limited to wood piles with a 14-inch diameter or less, concrete piles with a 24-inch diameter/width or less, metal pipe piles with a 36-inch diameter or less, metal boatlift I-beams, concrete slab walls, vinyl sheet piles, and metal sheet piles.
  - c. Any installation of metal pipe or metal sheet pile by impact hammer is not authorized (Reference: Categories D and E of JAXBO PDCs for In-Water Noise from Pile and Sheet Pile Installation, page 86.).
  - d. Projects within the boundary of the NOAA Florida Keys National Marine Sanctuary require prior approval from the Sanctuary (Reference: JAXBO PDCs AP.14 and A1.6).
5. The Permittee shall comply with the "Standard Manatee Conditions for In-Water Work - 2011" (Attachment 29).
6. No structure or work shall adversely affect or disturb properties listed in the National Register of Historic Places or those eligible for inclusion in the National Register. Prior to the start of work, the Applicant/Permittee or other party on the Applicant's/Permittee's behalf, shall conduct a search of known historical properties by contracting a professional archaeologist, and contacting the Florida Master Site File at 850-245-6440 or [SiteFile@dos.state.fl.us](mailto:SiteFile@dos.state.fl.us). The Applicant/Permittee can also research sites in the National Register Information System (NRIS). Information can be found at <http://www.cr.nps.gov/nr/research>.
  - a. If, during the initial ground disturbing activities and construction work, there are archaeological/cultural materials unearthed (which shall include, but not be limited to:



pottery, modified shell, flora, fauna, human remains, ceramics, stone tools or metal implements, dugout canoes or any other physical remains that could be associated with Native American cultures or early colonial or American settlement), the Permittee shall immediately stop all work in the vicinity and notify the Compliance and Review staff of the State Historic Preservation Office at 850-245-6333 and the Corps Regulatory Archeologist at 904-232-3270 to assess the significance of the discovery and devise appropriate actions, including salvage operations. Based on the circumstances of the discovery, equity to all parties, and considerations of the public interest, the Corps may modify, suspend, or revoke the permit in accordance with 33 C.F.R. § 325.7.

- b. In the unlikely event that human remains are identified, the remains will be treated in accordance with Section 872.05, Florida Statutes; all work in the vicinity shall immediately cease and the local law authority, and the State Archaeologist (850-245-6444) and the Corps Regulatory Archeologist at 904-232-3270 shall immediately be notified. Such activity shall not resume unless specifically authorized by the State Archaeologist and the Corps.
7. The Permittee is responsible for obtaining any “take” permits required under the U.S. Fish and Wildlife Service’s regulations governing compliance with these laws. The Permittee should contact the appropriate local office of the U.S. Fish and Wildlife Service to determine if such “take” permits are required for a particular activity.
  8. Mangroves. The design and construction of a Project must comply with the following (Reference: JAXBO PDCs AP.3 and AP.12.):
    - a. All projects must be sited and designed to avoid or minimize impacts to mangroves.
    - b. Mangrove removal must be conducted in a manner that avoids any unnecessary removal and is limited to the following instances:
      - (1) Removal to install up to a 4-ft-wide walkway for a dock.
      - (2) Removal of mangroves above the mean high water line (MHWL) provided that the tree does not have any prop roots that extend into the water below the MHWL.
      - (3) Mangrove trimming. Mangrove trimming refers to the removal (using hand equipment such as chain saws and/or machetes) of lateral branches (i.e., no alteration of the trunk of the tree) in a manner that ensures survival of the tree.
        - (a) Projects with associated mangrove trimming waterward of the MHWL are authorized if the trimming: (a) occurs within the area where the authorized structures are placed or will be placed (i.e., removal of branches that overhang a dock or lift), (b) is necessary to provide temporary construction access, and (c) is conducted in a manner that avoids any unnecessary trimming.
        - (b) Projects proposing to remove red mangrove prop roots waterward of the MHWL are not authorized, except for removal to install the dock walkways as described above.
  9. For Projects authorized under this SPGP VI-R1 in navigable waters of the U.S., the Permittee understands and agrees that, if future operations by the United States require the removal, relocation, or other alteration, of the structures or work herein authorized, or if, in the opinion of the Secretary of the Army or his authorized representative, said structure or work shall cause unreasonable obstruction to the free navigation of the navigable waters, the Permittee will be required, upon due notice from the Corps of Engineers, to remove,

relocate, or alter the structural work or obstructions caused thereby, without expense to the United States. No claim shall be made against the United States on account of any such removal or alteration.

10. Notifications to the Corps. For all authorizations under this SPGP VI-R1, including Self-Certifications, the Permittee shall provide the following notifications to the Corps:
  - a. Commencement Notification. Within 10 days from the date of initiating the work authorized by this permit the Permittee shall submit a completed "Commencement Notification" form (Attachment 8).
  - b. Corps Self-Certification Statement of Compliance form. Within 60 days of completion of the work authorized by this permit, the Permittee shall complete the "Self-Certification Statement of Compliance" form (Attachment 9) and submit it to the Corps. In the event that the completed work deviates in any manner from the authorized work, the Permittee shall describe the deviations between the work authorized by this permit and the work as constructed on the "Self-Certification Statement of Compliance" form. The description of any deviations on the "Self-Certification Statement of Compliance" form does not constitute approval of any deviations by the Corps.
  - c. Permit Transfer. When the structures or work authorized by this permit are still in existence at the time the property is transferred, the terms and conditions of this permit will continue to be binding on the new owner(s) of the property. To validate the transfer of this permit and the associated liabilities associated with compliance with its terms and conditions, have the transferee sign and date the enclosed form (Attachment 10).
  - d. Reporting Address. The Permittee shall submit all reports, notifications, documentation, and correspondence required by the general and special conditions of this permit to the following address.
    - (1) For standard mail: U.S. Army Corps of Engineers, Regulatory Division, Enforcement Section, P.O. Box 4970, Jacksonville, FL, 32232-0019.
    - (2) For electronic mail: SAJ-RD-Enforcement@usace.army.mil (not to exceed 10 MB). The Permittee shall reference this permit number, SAJ-2015-2575 on all submittals.
11. The District Engineer reserves the right to require that any request for authorization under this SPGP VI-R1 be evaluated as an Individual Permit. Conformance with the terms and conditions of the SPGP VI-R1 does not automatically guarantee Federal authorization.
12. On a case-by-case basis, the Corps may impose additional Special Conditions which are deemed necessary to minimize adverse environmental impacts.
13. Failure to comply with all conditions of the SPGP VI-R1 constitutes a violation of the Federal authorization.
14. The SPGP VI-R1 will be valid through the expiration date unless suspended or revoked by issuance of a public notice by the District Engineer. The Corps, in conjunction with the Federal resource agencies, will conduct periodic reviews to ensure that continuation of the permit during the period ending expiration date, is not contrary to the public interest. The SPGP VI-R1 will not be extended beyond the expiration date but may be replaced by a new SPGP. If revocation occurs, all future applications for activities covered by the SPGP VI-R1 will be evaluated by the Corps.
15. If the SPGP VI-R1 expires, is revoked, or is terminated prior to completion of the authorized



work, authorization of activities which have commenced or are under contract to commence in reliance upon the SPGP VI-R1 will remain in effect provided the activity is completed within 12 months of the date the SPGP VI-R1 expired or was revoked.

### **Special Conditions for Shoreline Stabilization Activities**

1. Shoreline stabilization structures other than vertical seawalls shall be no steeper than a 2 horizontal:1 vertical slope (Reference: JAXBO PDC A1.1.4.).
2. Placement of backfill is limited to those situations where it is necessary to level the land behind seawalls or riprap.
3. Living shoreline structures and permanent wave attenuation structures can only be constructed out of the following materials: oyster breakwaters, clean limestone boulders or stone (sometimes contained in metal baskets or cages to contain the material), small mangrove islands, biologs, coir, rock sills, and pre-fabricated structures made of concrete and rebar that are designed in a manner so that they do not trap sea turtles, smalltooth sawfish, or sturgeon (Reference: JAXBO PDC A7.5.).
  - a. Reef balls or similar structures are authorized if they are not open on the bottom, are open-bottom structures with a top opening of at least 4 ft, or are pre-fabricated structures, such as reef discs stacked on a pile, and are designed in a manner that would not entrap sea turtles.
  - b. Oyster reef materials shall be placed and constructed in a manner that ensures that materials will remain stable and that prevents movement of materials to surrounding areas (e.g., oysters will be contained in bags or attached to mats and loose cultch must be surrounded by contained or bagged oysters or another stabilizing feature) (Reference: JAXBO PDC A7.2.).
  - c. Oyster reef materials shall be placed in designated locations only (i.e., the materials shall not be indiscriminately dumped or allowed to spread outside of the reef structure) (Reference: JAXBO PDC A7.3.).
  - d. Wave attenuation structures must have 5 ft gaps at least every 75 ft in length as measured parallel to the shoreline and at the sea floor, to allow for tidal flushing and species movement (Reference: JAXBO PDC A7.6.).
  - e. Other materials are not authorized by this SPGP VI-R1 (Reference: JAXBO PDC A7.5.).





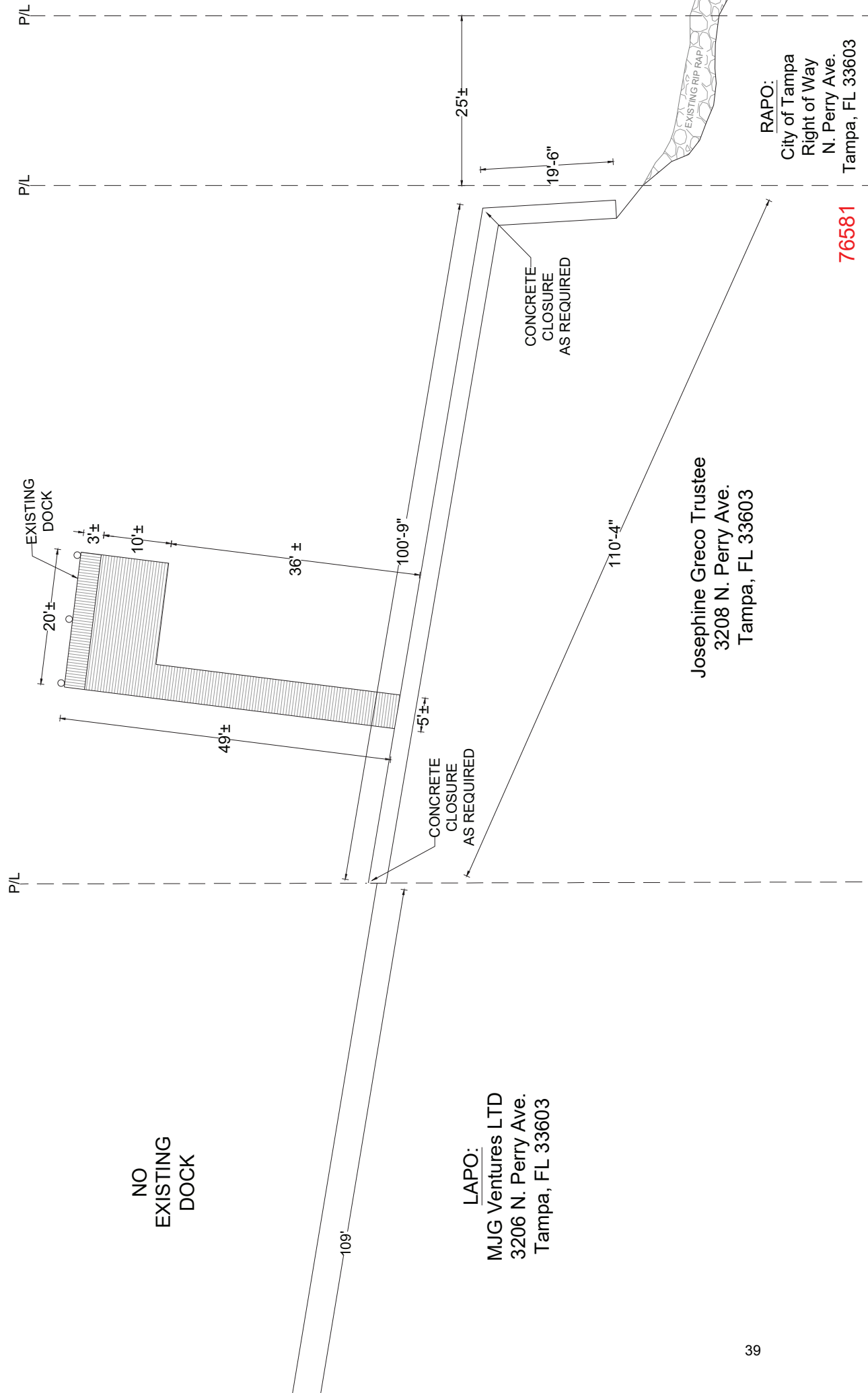
9002 W. Hillsborough Ave.  
Tampa, FL 33615  
Phone: 813-855-1672  
Email: RobinC@baydock.com

DATE: 03-21-23

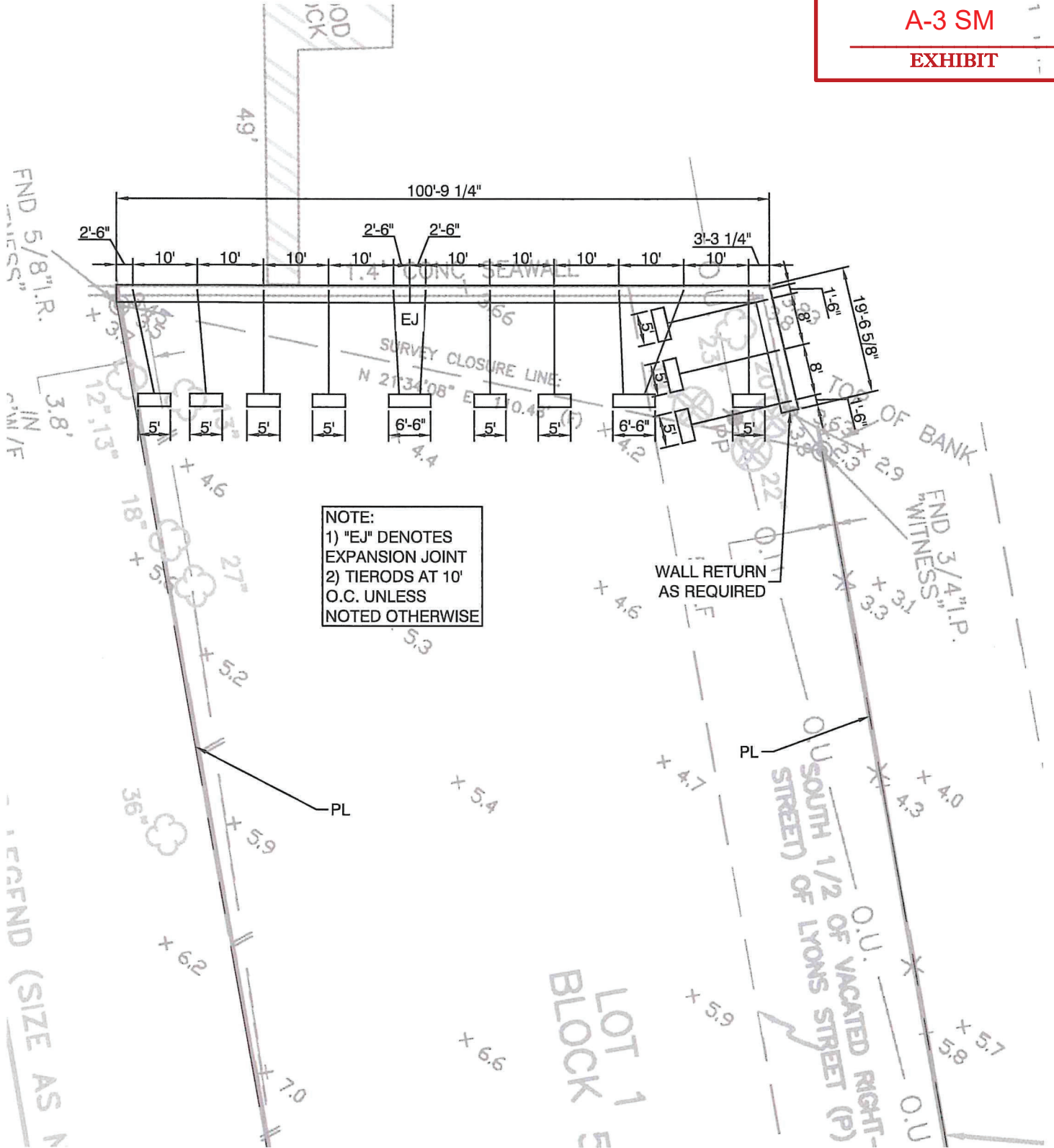
SCALE: NTS

Josephine Greco  
3208 N. Perry Ave.  
Tampa, FL 33603

**EPC  
PERMIT  
A-2 SM  
EXHIBIT**



**EPC  
PERMIT  
A-3 SM  
EXHIBIT**



1 OVERALL SITE PLAN VIEW  
1 OF 3 1"=20'



Digitally signed  
by John B.  
Adams, Jr.  
Date:  
2023.02.23  
13:23:37 -05'00"

**Reuben/Clarson**  
CONSULTING  
**MARINE ENGINEERING**  
ASSESS.ADVISE.DESIGN  
(CERT. OF AUTH. NO. 9206)  
780 94TH AVENUE NORTH, SUITE 102, ST. PETERSBURG, FL 33702  
P: (727) 895-4717 F: (727) 578-9542  
WWW.REUBENCLARSONCONSULTING.COM

OWNER:  
**GAVIN GRECO**

CONTRACTOR:  
**SEAWALL DESIGN**

DATE:  
**1-11-2022**

DRAWN/CHECK BY:  
**JH/JA**

SCALE:  
**N.T.S.**

PROJ. NO.  
**RR22-22TA0155**

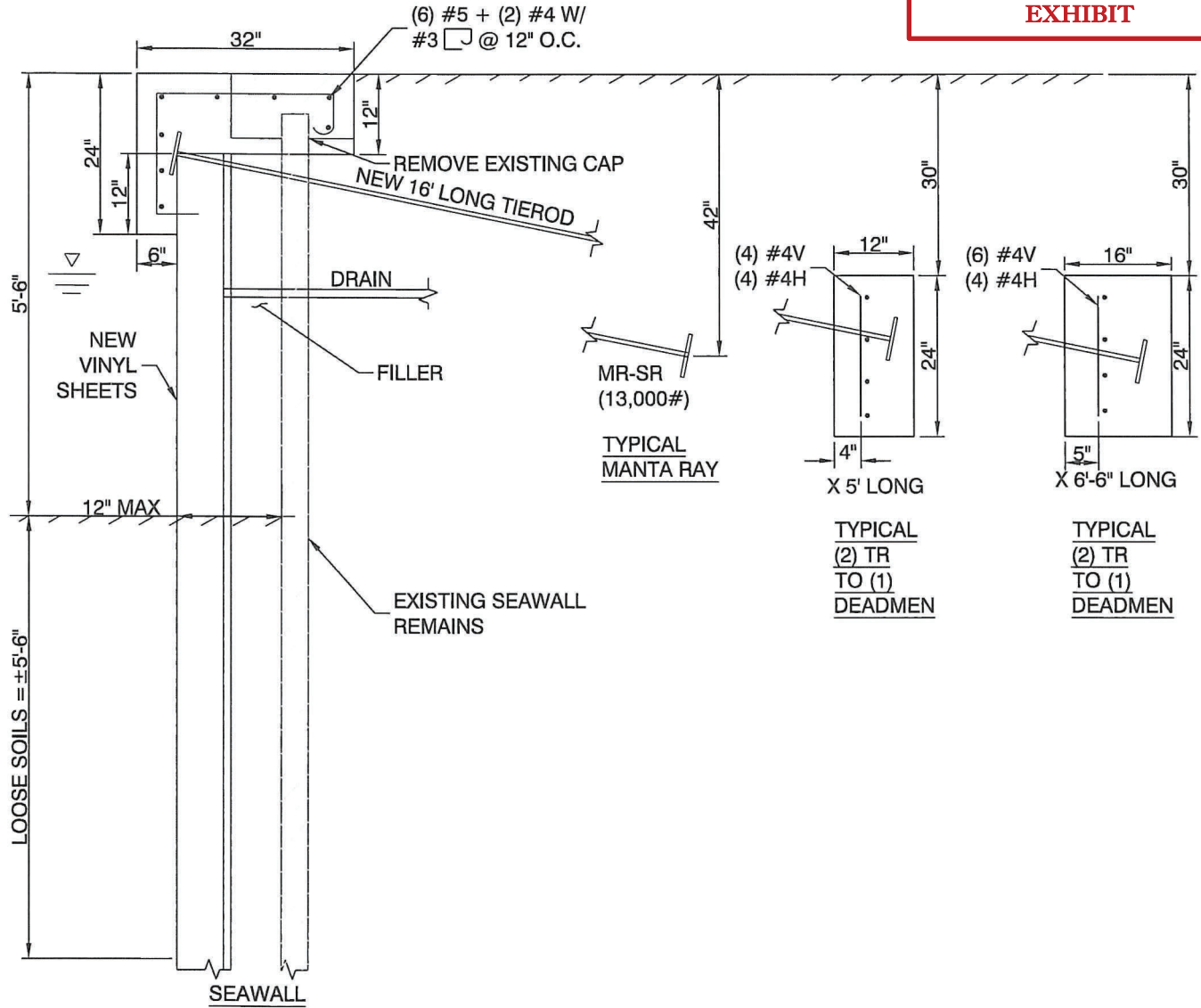
SHEET:  
**1 OF 2**

REVISIONS:  
**02-21-2023**

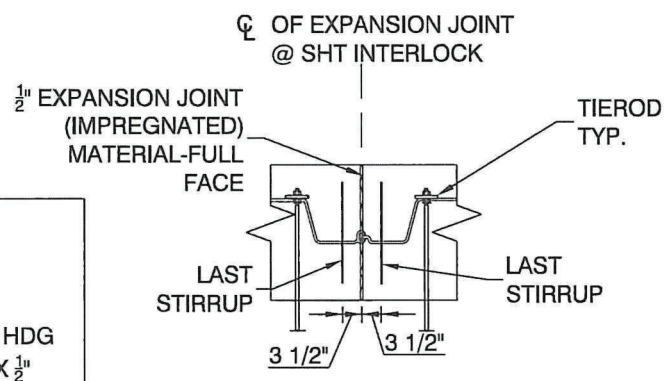
76584



**EPC  
PERMIT  
A-4 SM  
EXHIBIT**



**2 SEAWALL SECTION VIEW**  
2 OF 2 1/2"=1'



**1 EXPANSION JOINT DETAIL**  
2 OF 2 N.T.S

- NOTES:**
- 1.) SHEETS-ESP 5.5, VANGUARD OR SG-550 X 14' LONG.
  - 2.) CONCRETE-4000 PSI AT 28 DAYS, FILLER 3500 PSI
  - 3.) REBAR-GRADE 60, PLAIN, 3" CONCRETE COVER
  - 4.) TIEBACKS-1"Ø X 16' LONG HDG, PVC ENCASED W/ (1) 6" X 6" X 1/2" HDG WASHERS & NUTS TO MR-SR MANTA RAY ANCHORS OR (2) 6" X 6" X 1/2" HDG WASHERS & NUTS INTO CONCRETE DEADMEN.
  - 5.) DRAINS-1.25"Ø X 4' LONG SLIT TYPE PVC WELL POINT DRAINS @ 6' ON CENTER THROUGH BOTH WALLS 5" ABOVE THE BARNACLE LINE.
  - 6.) NEW CAP AT THE SAME ELEVATION AS EXISTING
  - 7.) MEETS FBC 2020, 7TH EDITION.



Digitally signed  
by John B.  
Adams, Jr.  
Date:  
2023.02.23  
13:24:33 -05'00

**Reuben & Clarson CONSULTING**  
MARINE ENGINEERING  
ASSESS.ADVISE.DESIGN  
(CERT. OF AUTH. NO. 9206)  
780 94TH AVENUE NORTH, SUITE 102, ST. PETERSBURG, FL 33702  
P: (727) 895-4717 F: (727) 578-9542  
WWW.REUBENCLARSONCONSULTING.COM

OWNER: <b>GAVIN GRECO</b>	CONTRACTOR:	DATE: <b>1-11-2022</b>	SHEET: <b>2 OF 2</b>
<b>3208 N PERRY AVE TAMPA, FL</b>		DRAWN/CHECK BY: <b>JH/JA</b>	REVISIONS: <b>02-21-2023</b>
<b>SEAWALL DESIGN</b>		SCALE: <b>N.T.S.</b>	
		PROJ. NO. <b>RR22-22TA015S</b>	

76581

## Gile, Michael

---

**From:** noreply@fs2.formsite.com on behalf of epcinfo at epchc.org <noreply@fs2.formsite.com>  
**Sent:** Monday, February 27, 2023 4:38 PM  
**To:** Gile, Michael  
**Subject:** MWP09 - Minor Work Permit Application Result #14036525

**Follow Up Flag:** Flag for follow up  
**Flag Status:** Flagged

NEW	\$650 Review Fee
Fee Amount:	650.00
ItemCode	MWP
Email Address to send Invoice to:	<a href="mailto:chantel@baydock.com">chantel@baydock.com</a>
SecKey	i32Uej-ddxWWEjdna344s2
Item #211	Replacement of seawall
Owner First Name	Josephine
Owner Last Name	Greco
Mailing Address	501 N Morgan St. STE 202
City	Tampa
State	FL
Zip Code	33602
Owner Telephone Number(s)	813-612-1815
Email Address	<a href="mailto:jeminvestmentsal@aol.com">jeminvestmentsal@aol.com</a>
Are you using an agent?	Yes
Agent First Name	Kevin
Agent Last Name	McNamara
Company Name (if applicable)	Bay Dock Enterprise
Street Address	9002 W Hillsborough Ave
City	Tampa
State	FL
Zip Code	33615

Telephone Number(s)	813-855-1672
Email Address	<a href="mailto:chantel@baydock.com">chantel@baydock.com</a>
Site Street Address	3208 N. Perry Ave
City	Tampa
State	FL
Zip Code	<del>33602</del> <u>33603*</u>
Folio Numbers(s) of Site	181473-0100
Parcel ID:	
Section	
Required	11
Township	
Required	29
Range	
Required	18
Name of Water Body / Waterway at Proposed Project	Hillsborough River
Proposed:	Private Single-Dwelling
Owner	City of Tampa
Check to confirm that your project is not located in critical habitat for smalltooth sawfish or gulf sturgeon, as applicable.	Confirmed
Check to confirm that if your project is located in waters accessible to manatees, the project shall not affect or will not directly or indirectly likely adversely affect manatees, as applicable.	Confirmed
A. Structures	Maintenance / Replacement
2) Seawalls, Rip-Rap, Revetments, or Other Shoreline Stabilization (check applicable boxes)	Seawall
Item #237	
Length of Shoreline at Site (in linear feet)	
(if applicable)	100'-9 1/4" <u>+19' 6.625" = 120' 3.875" *</u>
Length of Work Proposed Along Shoreline (in linear feet)	

(if applicable)	100'-9 1/4" <u>+19' 6.625" = 120' 3.875" *</u>
<b>Seawall Vertical Height (in feet)</b>	
(if applicable)	5'-6"
<b>Rip-Rap Slope - Horizontal Distance (in feet)</b>	
<b>Rip-Rap Slope - Vertical Height (in feet)</b>	
<b>Type of Material</b>	
<b>Dredged Volume (in cubic feet)</b>	
<b>Filled Volume (in cubic feet)</b>	
<b>To Begin On:</b>	04/17/2023
<b>To Be Completed By:</b>	04/27/2023
<b>Public Interest Comment Box:</b>	The proposed work meets TPA Minor Work Permit Guidelines.
<b>1st Adjacent Property Owner Name(s)</b>	MJG Ventures LTD
<b>Mailing Address</b>	501 N Morgan St STE 202
<b>City</b>	Tampa
<b>State</b>	FL
<b>Zip Code</b>	33602
<b>2nd Adjacent Owner</b>	<u>City of Tampa Public Works *</u> <del>Sebastian &amp; Elizabeth Castellano</del>
<b>Mailing Address</b>	<u>306 East Jackson Street *</u> <del>3210 N Perry Ave</del>
<b>City</b>	Tampa
<b>State</b>	FL
<b>Zip Code</b>	<u>33602 *</u> <del>33603</del>
<b>OWNER / APPLICANT ACKNOWLEDGEMENT</b>	I am an agent filling out the application on behalf of the owner.
<b>Please download, complete and sign the Owner's Authorization Form. Then upload the signed authorization document here:</b>	<a href="#">Greco Josephone EPC Signature Page.pdf (549 KB)</a>
<b>Project Drawings uploads: ( Site Plan, Plan Review, Profile)</b>	<a href="#">Greco Josephine- 3208 N Perry Ave Permit Checklist Drawings.pdf (2.18 MB)</a>





**Project Design Criteria Checklist for the U.S. Army Corps of Engineers Jacksonville District's Programmatic Biological Opinion**  
**Summary Checklist (Must be submitted with all projects)**

**Permitting Agency's Internal Use Only:**

Date checklist sent to NMFS (MM/DD/YY)     
  Reviewer Last Name     
  Application # (for Corps: SAJ-XXXX-XXXX)     
  Checklist Version<sup>1</sup>

Indicate the agency issuing the permit/authorization.

Yes  No Is this a re-verification, edit, or modification to a consultation previously submitted under JaxBO?

If yes to above, enter date of previous Tier II consultation

If another NMFS programmatic BO was used for the proposed project, please select name of programmatic BO used.

The Corps Project Manager or Delegated Authority has reviewed and confirmed that the proposed project meets all PDCs. It is the responsibility of the reviewer to ensure the proposed project complies with all the applicable PDCs. Please enter initials of reviewer.

Project Street Address     
  Latitude (decimal degrees, centroid of the project)

City     
  Longitude (decimal degrees, centroid of the project. Please include the negative symbol)

County (Florida)     
  Municipality (Puerto Rico & USVI)

Select all activities used for the entire proposed project:

- 1   
  2   
  3   
  4   
  5   
  6   
  7   
  8   
  9   
  10   
 Superseding Process

Geographic Area	Is the project located in the geographic area?		Select DCH Unit	Are Essential Features Present?		If Essential Features are present, enter area of impact
Smalltooth Sawfish DCH Limited Exclusion Zones (AP.4)	<input type="radio"/> Yes	<input checked="" type="radio"/> No	N/A	<input type="radio"/> Yes	<input type="radio"/> No	N/A
Gulf Sturgeon DCH Migratory Restriction Zones (AP.4)	<input type="radio"/> Yes	<input checked="" type="radio"/> No	N/A	<input type="radio"/> Yes	<input type="radio"/> No	N/A
Atlantic Sturgeon DCH Exclusion Zone (AP.4)	<input type="radio"/> Yes	<input checked="" type="radio"/> No	N/A	<input type="radio"/> Yes	<input type="radio"/> No	No activities allowed here!
North Atlantic Right Whales Educational Sign Zones (AP.4)	<input type="radio"/> Yes	<input checked="" type="radio"/> No	N/A	<input type="radio"/> Yes	<input type="radio"/> No	N/A
U.S. Caribbean Sea Turtle Critical Habitat Restriction Zones (AP.4)	<input type="radio"/> Yes	<input checked="" type="radio"/> No	N/A	<input type="radio"/> Yes	<input type="radio"/> No	N/A
Bryde's Whale Exclusion Zone (AP.4)	<input type="radio"/> Yes	<input checked="" type="radio"/> No	N/A	<input type="radio"/> Yes	<input type="radio"/> No	No activities allowed here!
Smalltooth sawfish DCH	<input type="radio"/> Yes	<input checked="" type="radio"/> No	<input type="text"/>	<input type="radio"/> Yes	<input type="radio"/> No	<input type="text"/> LF of Red Mangroves <input type="text"/> SF of shallow euryhaline water
Gulf sturgeon DCH	<input type="radio"/> Yes	<input checked="" type="radio"/> No	<input type="text"/>	<input type="radio"/> Yes	<input type="radio"/> No	<input type="text"/> SF of essential features
Loggerhead sea turtle (NWA DPS) DCH <sup>2</sup>	<input type="radio"/> Yes	<input checked="" type="radio"/> No	<input type="text"/>	<input type="radio"/> Yes	<input type="radio"/> No	<input type="text"/> SF of essential features
Green sea turtle (NA DPS) DCH	<input type="radio"/> Yes	<input checked="" type="radio"/> No	N/A	<input type="radio"/> Yes	<input type="radio"/> No	<input type="text"/> SF of essential features
Hawksbill sea turtle DCH	<input type="radio"/> Yes	<input checked="" type="radio"/> No	N/A	<input type="radio"/> Yes	<input type="radio"/> No	<input type="text"/> SF of essential features
Leatherback sea turtle DCH	<input type="radio"/> Yes	<input checked="" type="radio"/> No	N/A	<input type="radio"/> Yes	<input type="radio"/> No	<input type="text"/> SF of essential features
Staghorn and elkhorn (Acropora) coral DCH	<input type="radio"/> Yes	<input checked="" type="radio"/> No	<input type="text"/>	<input type="radio"/> Yes	<input type="radio"/> No	No impacts to essential features allowed.
Johnson's seagrass DCH	<input type="radio"/> Yes	<input checked="" type="radio"/> No	<input type="text"/>	<input type="radio"/> Yes	<input type="radio"/> No	<input type="text"/> SF of essential features
North Atlantic right whale DCH	<input type="radio"/> Yes	<input checked="" type="radio"/> No	<input type="text"/>	<input type="radio"/> Yes	<input type="radio"/> No	<input type="text"/> SF of essential features
Atlantic sturgeon DCH	<input type="radio"/> Yes	<input checked="" type="radio"/> No	<input type="text"/>	<input type="radio"/> Yes	<input type="radio"/> No	N/A No activities allowed here!

Is the Project in or near areas with mangroves, seagrasses, corals, or hard bottom habitat? Does it comply with PDCs for Mangroves, Seagrasses, Corals, and Hard Bottom for All Projects (AP.3)

Resource	Present in the project footprint?		Square Feet of Impact
Mangroves	<input type="radio"/> Yes	<input checked="" type="radio"/> No	<input type="text"/>
Nonlisted Seagrass	<input type="radio"/> Yes	<input checked="" type="radio"/> No	<input type="text"/>
Johnson's Seagrass	<input type="radio"/> Yes	<input checked="" type="radio"/> No	<input type="text"/>
Listed Corals	<input type="radio"/> Yes	<input checked="" type="radio"/> No	<input type="text"/>
Nonlisted Corals	<input type="radio"/> Yes	<input checked="" type="radio"/> No	<input type="text"/>
Hardbottom	<input type="radio"/> Yes	<input checked="" type="radio"/> No	<input type="text"/>

SF of Overwater Impacts (area of structure over/above the water surface, e.g., docks or canopies)

SF of Total In-water Impacts (area of substrate that is permanently changed below MHW, e.g., by seawall, riprap, or cross-sectional area of piles)

- Yes    Applicant agrees to adhere to PDCs for *In-Water Activities* (AP.1) as described in AP.7 through AP.11
- Yes    Applicant agrees to perform all activities during daylight hours (AP.6).
- Yes  No    Is the project within the boundary of the Florida Keys National Marine Sanctuary (FKNMS)?
- Yes    If within the boundaries of FKNMS, received NOAA authorization?

To be completed by applicant or agent if permit is issued by a delegated authority (FDEP, Miami-Dade, etc.) Please enter full name of applicant or applicant's representative:

The applicant or applicant's representative ensures the project complies with the PDCs and all information in this form and individual checklist(s) is correct

Comments:

765845



# Project Design Criteria Checklist for the U.S. Army Corps of Engineers Jacksonville District's Programmatic Biological Opinion Activity 1: Shoreline Stabilization

Agency's internal use only:

<input type="text" value="04/05/23"/>	Date checklist sent to NMFS (MM/DD/YY)	<input type="text" value="Merchant"/>	PM Last Name	<input type="text" value="SAJ-2023-76581"/>	Application #	<input type="text" value="1"/>	Checklist Version
---------------------------------------	----------------------------------------	---------------------------------------	--------------	---------------------------------------------	---------------	--------------------------------	-------------------

Proposed Activity (Select all that apply):

<input type="checkbox"/>	New Seawall	<input type="checkbox"/>	New Seawall Footer	<input type="checkbox"/>	Repair Shoreline Stabilization Materials
<input type="checkbox"/>	Repair Seawall	<input type="checkbox"/>	Replacement Seawall Footer	<input type="checkbox"/>	Removal/Fill of Upland Cut Boat Ramps, Slips, and Basins
<input checked="" type="checkbox"/>	Replacement Seawall	<input type="checkbox"/>	New Shoreline Stabilization Materials	<input type="checkbox"/>	Other (Provide Information in Comments Section)

Enter information about the proposed activity:

<input type="text" value="Vinyl"/>	Seawall material	<input type="text"/>	Number of piles
<input type="text" value="Vibratory"/>	Seawall installation method	<input type="text"/>	Size of piles (area in square feet)
<input type="text" value="A"/>	Select Noise PDC Category (AP.2.) <u>Revised from NA to A*</u>	<input type="text"/>	Pile Material
<input type="text" value="120.30"/>	Seawall: Length (ft)	<input type="text"/>	Pile Installation Method
<input type="text" value="1.50"/>	Seawall: Distance waterward from MHWL or existing seawall (ft)		
<input type="text"/>	Riprap: Length		
<input type="text"/>	Riprap: Distance waterward from MHWL or existing seawall		
<input type="text"/>	Is shoreline stabilization material hand placed around red mangrove prop roots? (A1.3)		

For projects located in Designated Critical Habitat, please complete applicable section below.

No Is the project located in the geographic area of **smalltooth sawfish critical habitat**?

Project does NOT include placement of new shoreline stabilization materials in waters between the MHWL and -3 ft MLLW (A1.8.1).

Enter area (sf) of shallow euryhaline waters filled as a result of seawall installation

Enter area (sf) of shallow euryhaline waters filled as a result of upland cut fill

No Is the project located in the geographic area of **gulf sturgeon critical habitat**?

All new shoreline stabilization materials (e.g., riprap, articulating concrete mats) are placed between the shoreline and -6 ft MHW (A1.9).

Enter width of the area (e.g., channel, bay) if in a Gulf Sturgeon Critical Habitat Migratory Restriction Zone (Section 2.1.1.2)

Select the pile or sheet pile activity being performed in Gulf Sturgeon Critical Habitat Migratory Restriction Zones (A1.9)?

No Is the project located in the geographic area of **Acropora critical habitat**?

Essential features present, so only repair/replace in same footprint. (A1.10)

No Is the project located in the geographic area of **Johnson's seagrass critical habitat**?

Essential features are present, confirm that installation of new or expanded shoreline stabilization material is not occurring (A1.11).

No Is the project located within the geographic area of **U.S. Caribbean sea turtle critical habitat**?

Project includes the repair/replacement of shoreline protection materials within the existing footprint (A1.12.).

Comments:

\*Changes made by SM of EPC

Please note, this checklist does not contain all of the PDCs. Please refer to the Biological Opinion to confirm the project meets all PDCs prior to completing this checklist.



**Hillsborough River  
Interlocal Planning Board  
& Technical Advisory Council**

**Agenda Item 8. C. Minor Work Permit No. 76907 (EPC)**

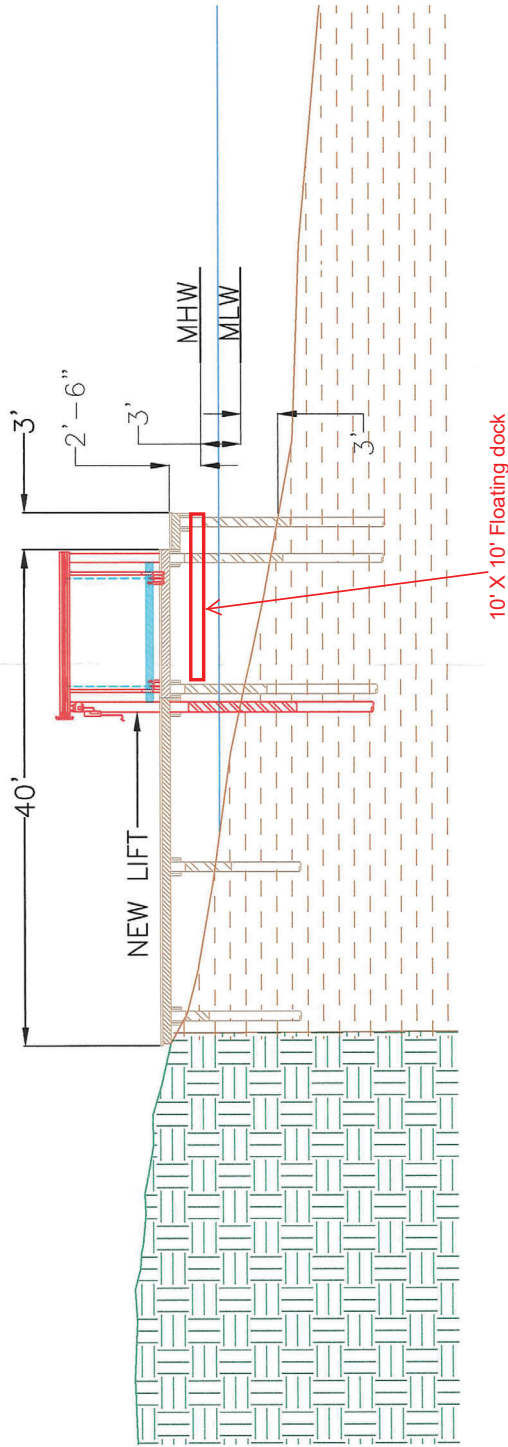
**Attachments:**

1. Minor Work Permit Application



**Plan Hillsborough**  
[planhillsborough.org](http://planhillsborough.org)  
[planner@plancom.org](mailto:planner@plancom.org)  
813 - 272 - 5940  
601 E Kennedy Blvd  
18<sup>th</sup> floor  
Tampa, FL, 33602

Exhibit created by EPC staff  
MPG 4-24-23



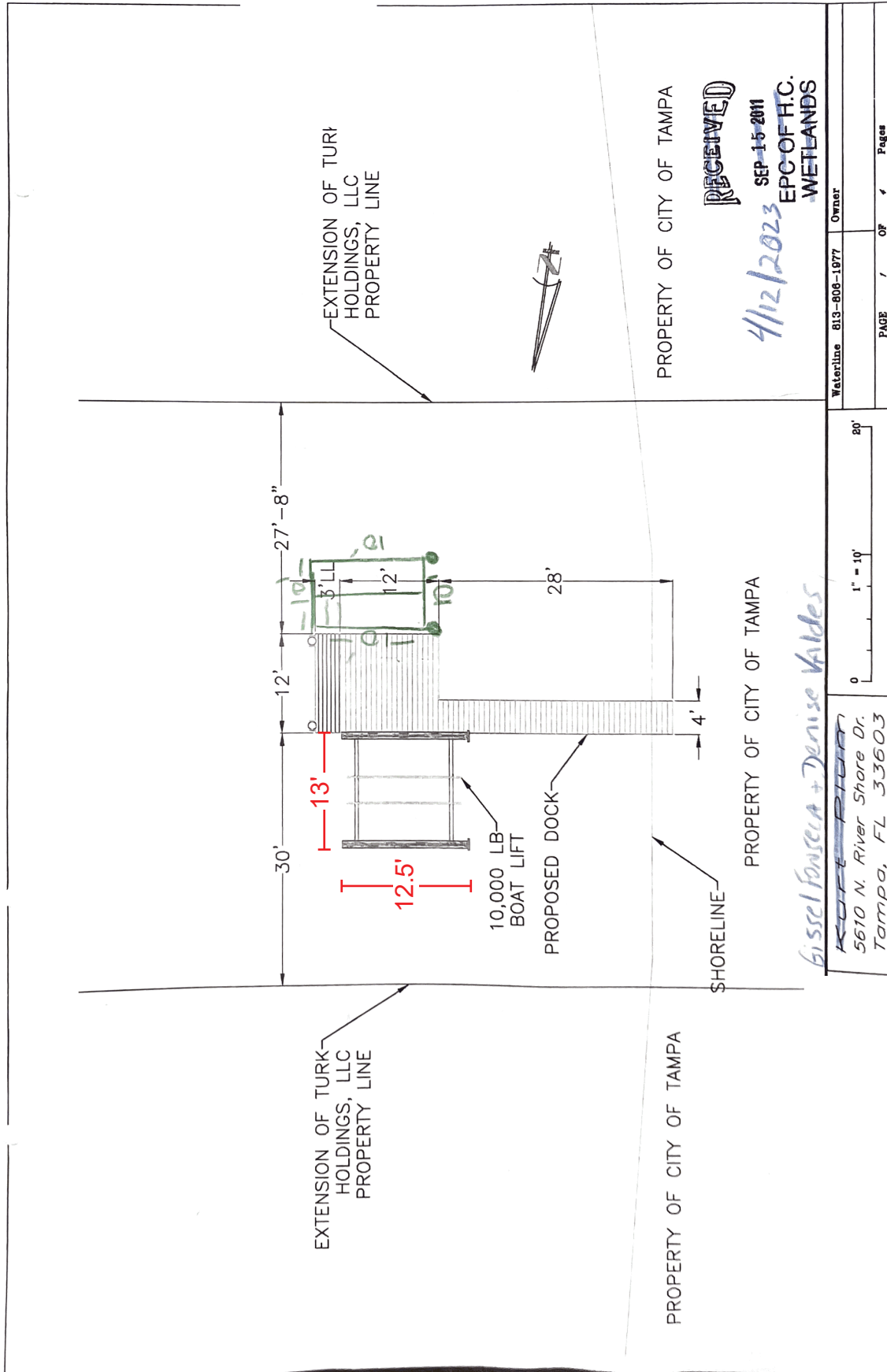
**Gissel Fonseca**  
5610 N. River Shore Dr.  
Tampa, FL 33603

0 1" = 10' 20'

Waterline 813-806-1977 Owner

PAGE 3 OF 4 Pages

*Floating Dock  
Jetski*



PROPERTY OF CITY OF TAMPA

**RECEIVED**

4/12/2023 SEP 15 2011

EPC OF H.C. WETLANDS

Waterline 813-808-1977	Owner
PAGE 1	OF 4 Pages

PROPERTY OF CITY OF TAMPA

80'

1" = 10'

*Gissel Fonseca + Denise Valdes*

~~ROFF PLOD~~

5610 N. River Shore Dr.  
Tampa, FL 33603

**Check to confirm that if your project is located in waters accessible to manatees, the project shall not affect or will not directly or indirectly likely adversely affect manatees, as applicable.**

Confirmed

**A. Structures**

Addition / Modification

**3) Other Type of Structure**

Other

**explain**

Floating dock next to existing permitted dock

**To Begin On:**

03/16/2023

**To Be Completed By:**

03/16/2023

**Enter any additional remarks for the project.**

A jet ski floating dock 10x10 next to existing dock

**Public Interest Comment Box:**

the floating dock does not impact the public view

**1st Adjacent Property Owner Name(s)**

Devon & Sally Shannon

**Mailing Address**

5614 N Rivershore Drive

**City**

Tampa

**State**

FL

**Zip Code**

33603

**2nd Adjacent Owner**

City of Tampa Public Works

**Mailing Address**

**City**

**State**

**Zip Code**

<b>Owner Telephone Number(s)</b>	8136906276
<b>Email Address</b>	<a href="mailto:gissel.realtor@gmail.com">gissel.realtor@gmail.com</a>
<b>Are you using an agent?</b>	No
<b>Site Street Address</b>	5610 N River Shore Dr
<b>City</b>	Tampa
<b>State</b>	FL
<b>Zip Code</b>	33603
<b>Folio Numbers(s) of Site</b>	103476-0100
<b>Parcel ID:</b>	
<b>Section</b>	
<b>Required</b>	35
<b>Township</b>	
<b>Required</b>	28
<b>Range</b>	
<b>Required</b>	18
<b>Name of Water Body / Waterway at Proposed Project</b>	Hillsborough River
<b>Proposed:</b>	Private Single-Dwelling
<b>Owner</b>	Denise Valdes and Gissel Fonseca52961
<b>1st Permit Number</b>	52961
<b>1st Date</b>	10/12/2011
<b>Check to confirm that your project is not located in critical habitat for smalltooth sawfish or gulf sturgeon, as applicable.</b>	Confirmed

## Mitchell, Isabella

---

**From:** Gile, Michael  
**Sent:** Thursday, April 20, 2023 4:59 PM  
**To:** Mitchell, Isabella  
**Subject:** FW: MWP09 - Minor Work Permit Application Result #14142539

---

**From:** noreply@fs2.formsite.com <noreply@fs2.formsite.com>  
**Sent:** Wednesday, April 12, 2023 5:39 PM  
**To:** Gile, Michael <gilem@epchc.org>  
**Subject:** MWP09 - Minor Work Permit Application Result #14142539

<b>AFTER-THE-FACT</b>	\$650 Review Fee
<b>WN#</b>	2023-0061E
<b>Fee Amount:</b>	650.00
<b>ItemCode</b>	MWP
<b>Email Address to send Invoice to:</b>	<a href="mailto:denisev13@verizon.net">denisev13@verizon.net</a>
<b>SecKey</b>	i32Uej-ddxWWEjdna344s2
<b>Item #211</b>	A jet ski floating dock with landing 10x10
<b>Item #146</b>	Request to be present at site inspection.
<b>Owner First Name</b>	Gissel
<b>Owner Last Name</b>	Fonseca
<b>Mailing Address</b>	5610 N River Shore Dr
<b>City</b>	Tampa
<b>State</b>	FL
<b>Zip Code</b>	33603