



Hillsborough County
City-County
Planning Commission

HOW SHOULD WE GROW? LET US KNOW.

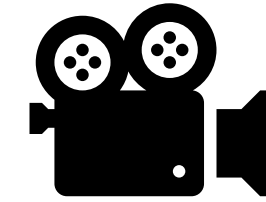
Unincorporated Hillsborough County
Comprehensive Plan –
Future Land Use Section Update

Public Meeting #1: April 25, 2023

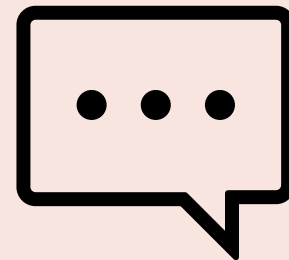
PlanHillsborough.org/hclanduse



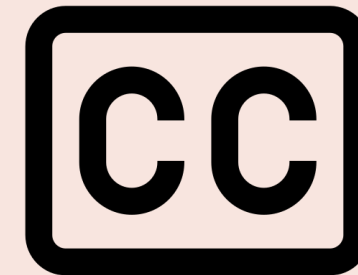
HOUSEKEEPING



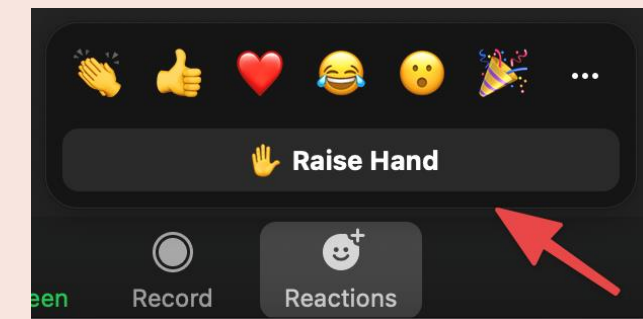
This meeting is being recorded.



Use the “Chat” feature for questions or comments to the presenters



Click the “Live Transcript” button to enable closed captioning



Use the “Raise Hand” button to ask a question



Please keep your mic and camera off unless you want to speak



Recording and slides will be shared after the meeting

Technical Issues? Email charlesc@plancom.org



AGENDA

- **Welcome & Introductions**
- **About the Comprehensive Plan & Land Use Section**
- **What changes are we anticipating?**
- **Breakout Groups**
- **Next steps & stay involved**
- **Q&A**

The Team



Melissa Lienhard, AICP
Project Manager/Executive Planner



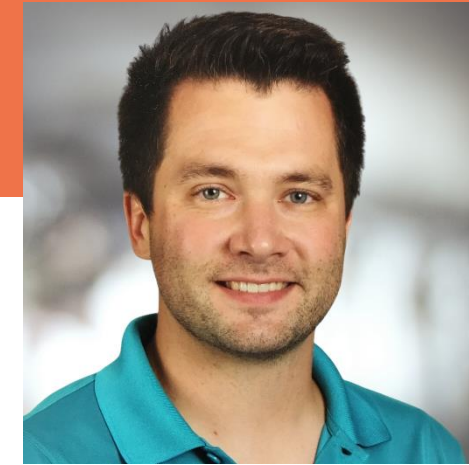
Andrea Papandrew, AICP
Senior Planner



Amy Elmore, AICP
Consultant Project Manager



Michelle Simmons
*Senior Community
Outreach Specialist*



Alex Burns
Community Planner

TAKE THE SURVEY



Scan the QR Code or
visit bit.ly/letusknowhc

What will Unincorporated Hillsborough County look like in 20 years?



How should we grow?

LET US KNOW.

Hillsborough County Departments

For Questions about:	Contact:	Phone:
Zoning or Development Code Violations	Code Enforcement	(813) 274-6600
Zoning, Permitting, Building Inspection	Development Services	(813) 272-5600
Community, Transportation, or Infrastructure Studies	Community and Infrastructure Planning	(813) 635-5400
Roads/Transportation	Public Works	(813) 635-5400

Poll Question 1

What are the most noticeable changes you have seen in your neighborhood and community in the last 5 years?



What is the Comprehensive Plan & Future Land Use?



Purpose and Uses

- Required by State Law for each local government
- Sets long-range policy direction for a community
- Approved by the local elected officials (Board of County Commissioners)
- Provides high-level direction on land use, environmental protection, infrastructure, mobility, and public services
- Typically updated every 7-10 years
- Zoning and Land Development Code must be consistent with the Comprehensive Plan



Purpose and Uses



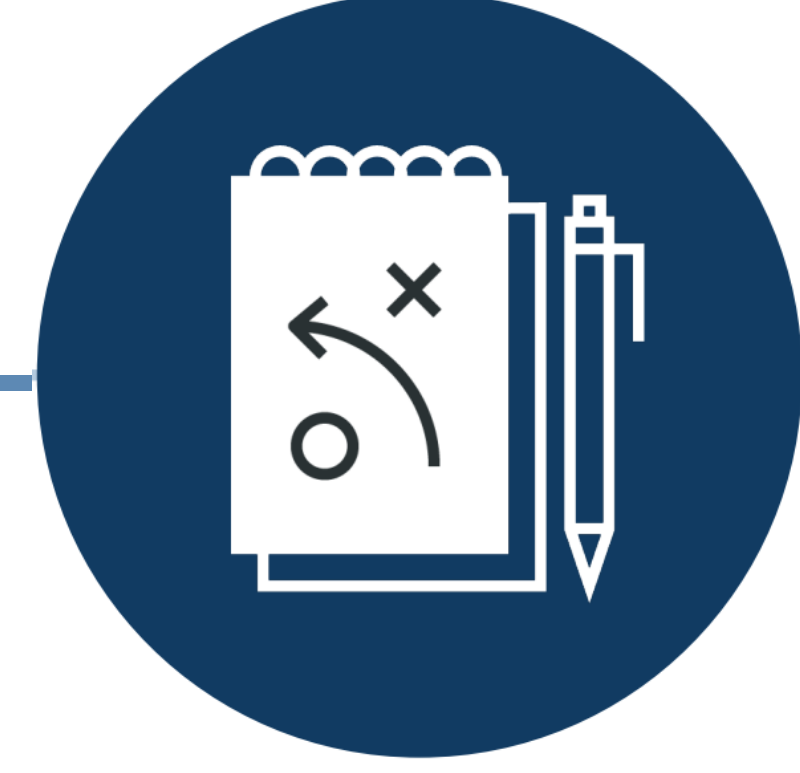
GOAL

General statement about a desired future outcome. Provides long-term vision and serves as plan's foundation.



OBJECTIVE

More specific statement that provides direction to achieve a given goal.



POLICY

Specific course of action or rule of conduct used to achieve goals and objectives of the plan. Guides day-to-day decision making.

What a Comprehensive Plan can do

Envision Future Growth

Summarize community values and designate growth and preservation areas

Provide Consistency

Determine consistency of new development with community vision

Prioritize Funding

Guides funding toward infrastructure improvements in specific areas

Protect Resources

Separate incompatible land uses and protect resources to ensure a thriving community

What a Comprehensive Plan cannot do

Issue or manage
permits

Enforce code
regulations

Design roadway
improvements or
manage traffic and
parking

Regulate
specifications for
building layouts,
setbacks, or uses

Implement or
change Zoning
Districts

Identify engineering
or stormwater
specifications

What is Future Land Use?

Designates areas into broad categories

Separates incompatible land uses

New development must be consistent with FLU map

Outlines range of uses, maximum densities/intensities



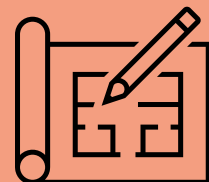
Future Land Use vs. Zoning



Future Land Use



Guides purpose and character of growth



Separates land into general categories



Sets maximum density and range of uses



Maintain health, safety, and welfare by separating incompatible land uses



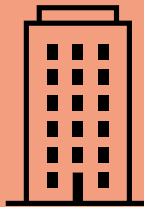
Zoning



Regulates building size, setbacks, specific uses, etc.



Used to approve/deny developments and uses



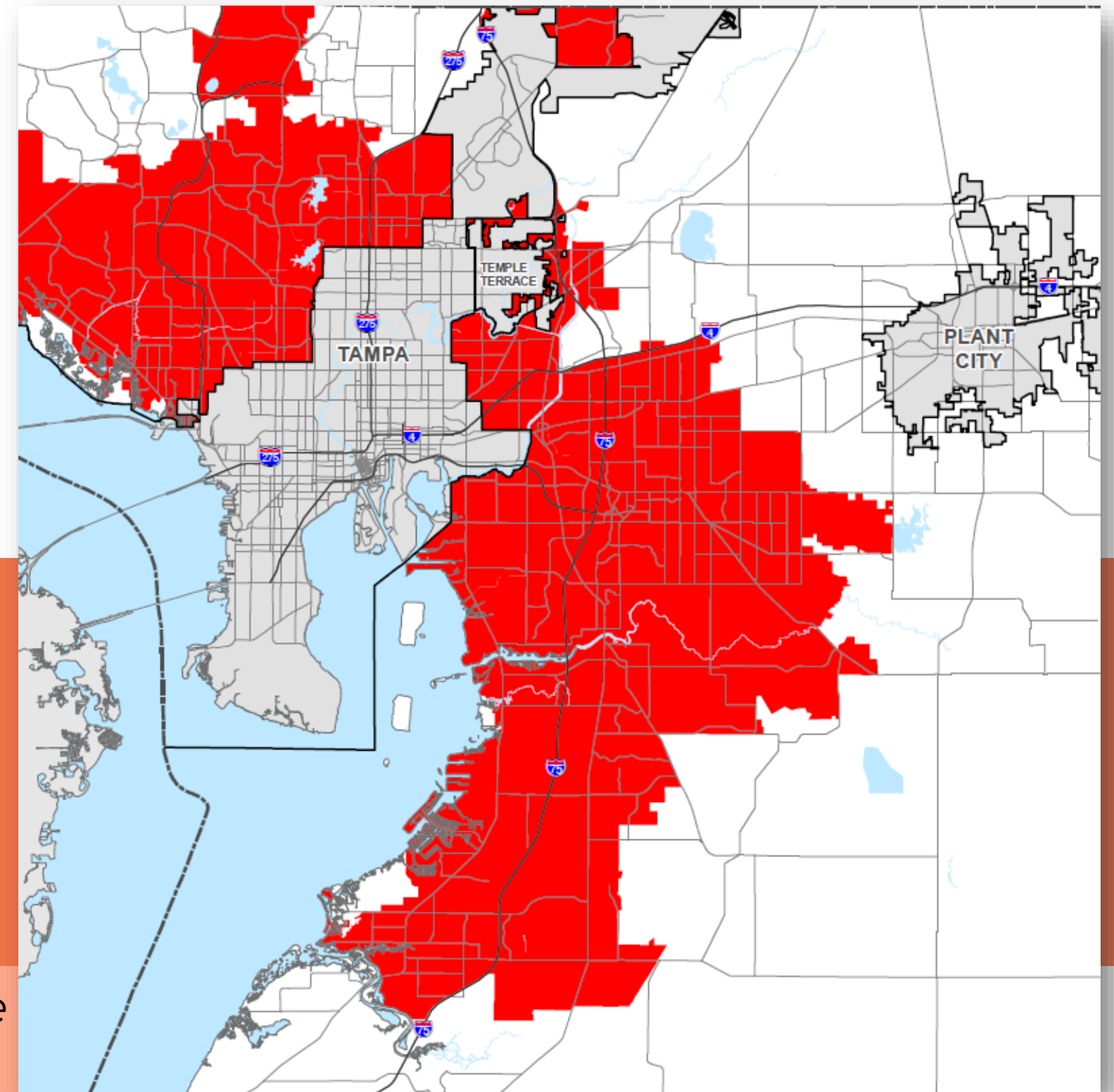
Defines specific districts within general categories

Urban Service Area

- Part of the adopted Future Land Use Element's Growth Management Strategy
- Pinpoints where current growth is focused
- Identifies urban/suburban development and rural areas
- Helps to create compatible development patterns that efficiently utilize land and county services

20%

Land that is vacant, developable or redevelopable within the Urban Service Area

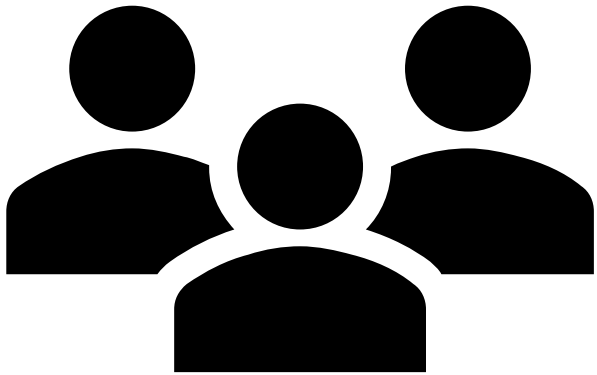


Source: Planning Commission, Jan. 2023

*Note: 2,110 acres annexed by Plant City since 2015

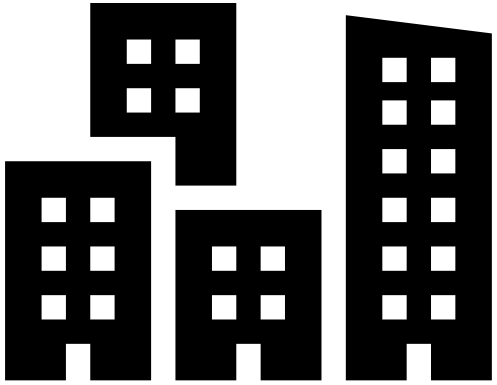
Why update the comprehensive plan?

By 2045, Unincorporated Hillsborough County will see...



**350,000
MORE PEOPLE**

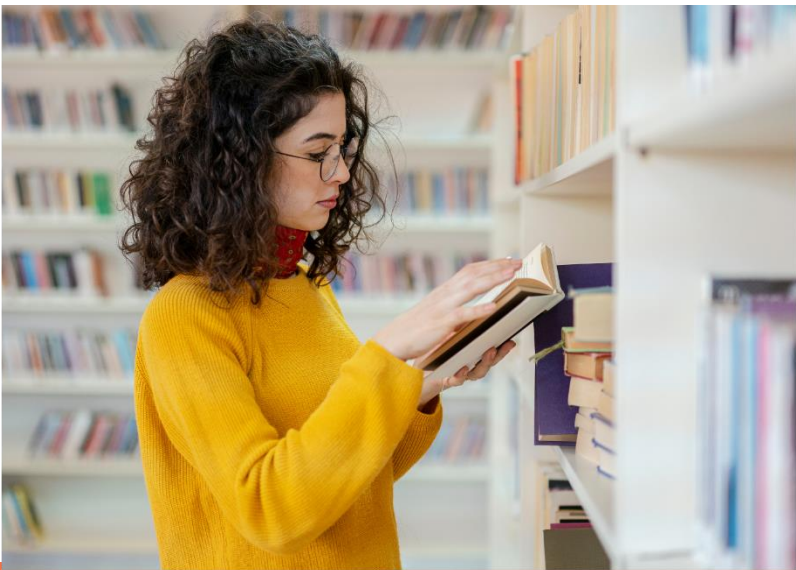
**107,000
MORE JOBS**



& Increasing demand for...



TRANSPORTATION



COUNTY SERVICES



SCHOOLS



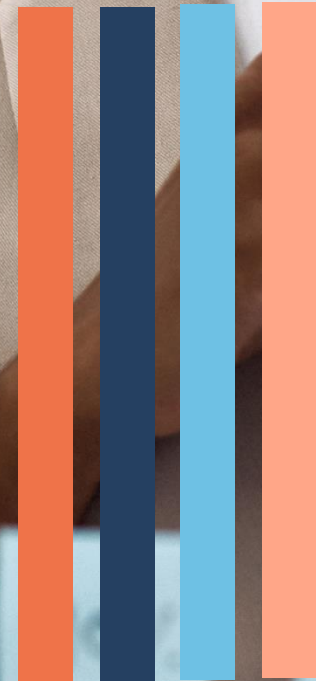
RECREATION

Poll Question 2

What are your most important priorities for your neighborhood and/or community as Hillsborough County continues to grow?



What changes are we anticipating?



Anticipated Changes



Minor streamline process changes
Typographical fixes

MAY

- Mixed Use
- Centers & Connections
- Commercial Location Criteria
- Transit Oriented Development

JUNE

- Timing of Growth & Expansion Area
- Preliminary feedback

JULY

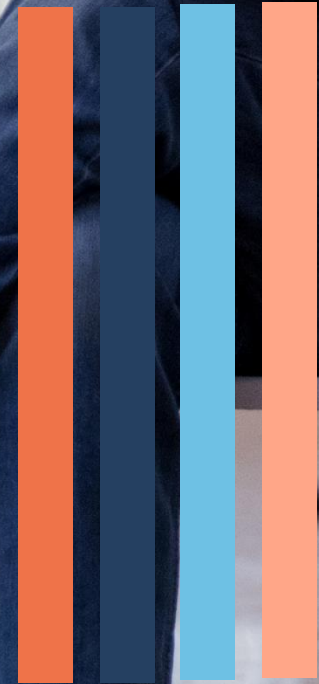
- Wrap-up & final feedback

Poll Question 3

What characteristics of your neighborhood and/or community do you feel need to be preserved as we continue growing?



Break Out & Discussion



Break Out Groups

Unincorporated Hillsborough County is growing. What are your priorities?

- What do you think are our communities' strengths?
- What types of development do you want to see?
- What do you want to preserve (i.e. open space, way of life, etc.)?
- What should we try to avoid as we continue to grow?
- What community needs will increase with more growth?

Report Back

- What do you think are our communities' strengths?
- What types of development do you want to see?
- What do you want to preserve (i.e. open space, way of life, etc.)?
- What should we try to avoid as we continue to grow?
- What community needs will increase with more growth?







What's next?





Get Involved

PUBLIC MEETINGS

April 25	6PM	Virtual 
May 16	6PM	In-Person
May 23	6PM	Virtual 
June 22	6:30PM	In-Person
June 26	6:30PM	Virtual 
July 18	6:30PM	In-Person
July 19	6:30PM	Virtual 

PROJECT ADVISORY TEAM MEETINGS

May 2, June 13, & Aug 8 From 5PM, In-Person

All meetings are free & open to the public.

TAKE THE SURVEY

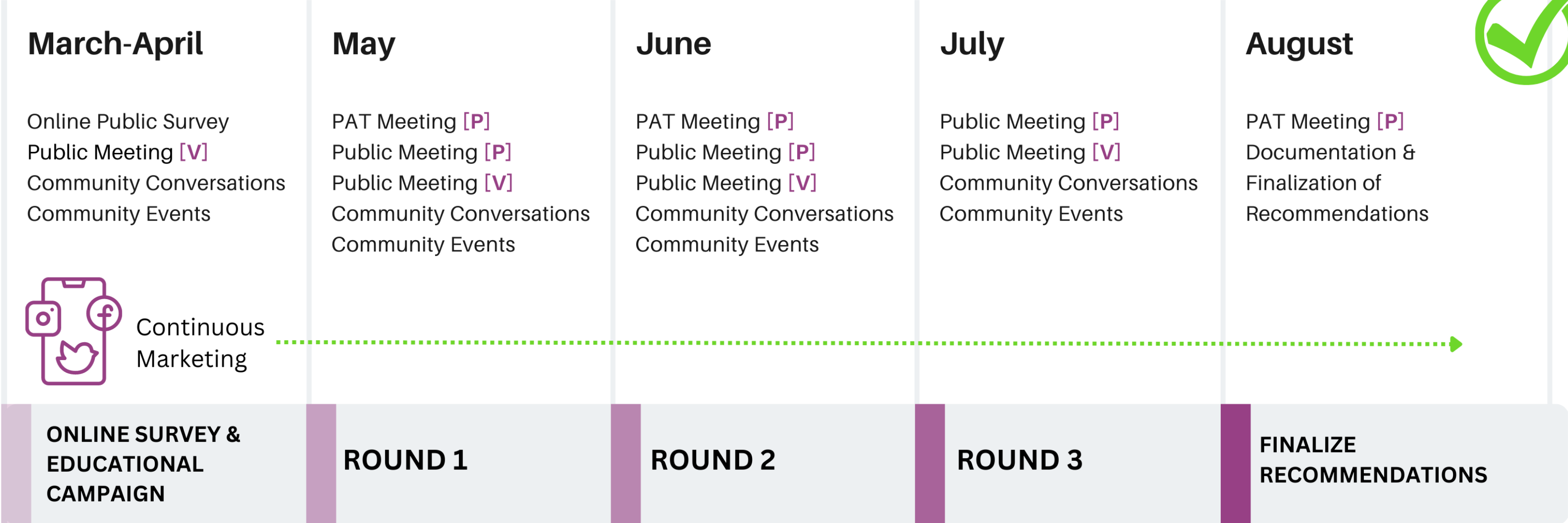


Scan the QR Code or
visit bit.ly/letusknowhc

Schedule



METROQUEST
ONLINE PUBLIC SURVEY



[V] Virtual [P] In-Person

Get in Touch



Hillsborough County
City-County
Planning Commission

Contact us for more information.



Melissa Lienhard, AICP
813.547.4364
lienhardm@plancom.org



Andrea Papandrew, AICP
813.665.1331
papandrewa@plancom.org

Visit our website and follow us on social media.



planhillsborough.org/hclanduse



Hillsborough County Departments

For Questions about:	Contact:	Phone:
Zoning or Development Code Violations	Code Enforcement	(813) 274-6600
Zoning, Permitting, Building Inspection	Development Services	(813) 272-5600
Community, Transportation, or Infrastructure Studies	Community and Infrastructure Planning	(813) 635-5400
Roads/Transportation	Public Works	(813) 635-5400