

HILLSBOROUGH COUNTY, FLORIDA
HILLSBOROUGH COUNTY COMPREHENSIVE PLAN
CENTERS AND CONNECTIONS MAP
DRAFT: MARCH 09, 2023

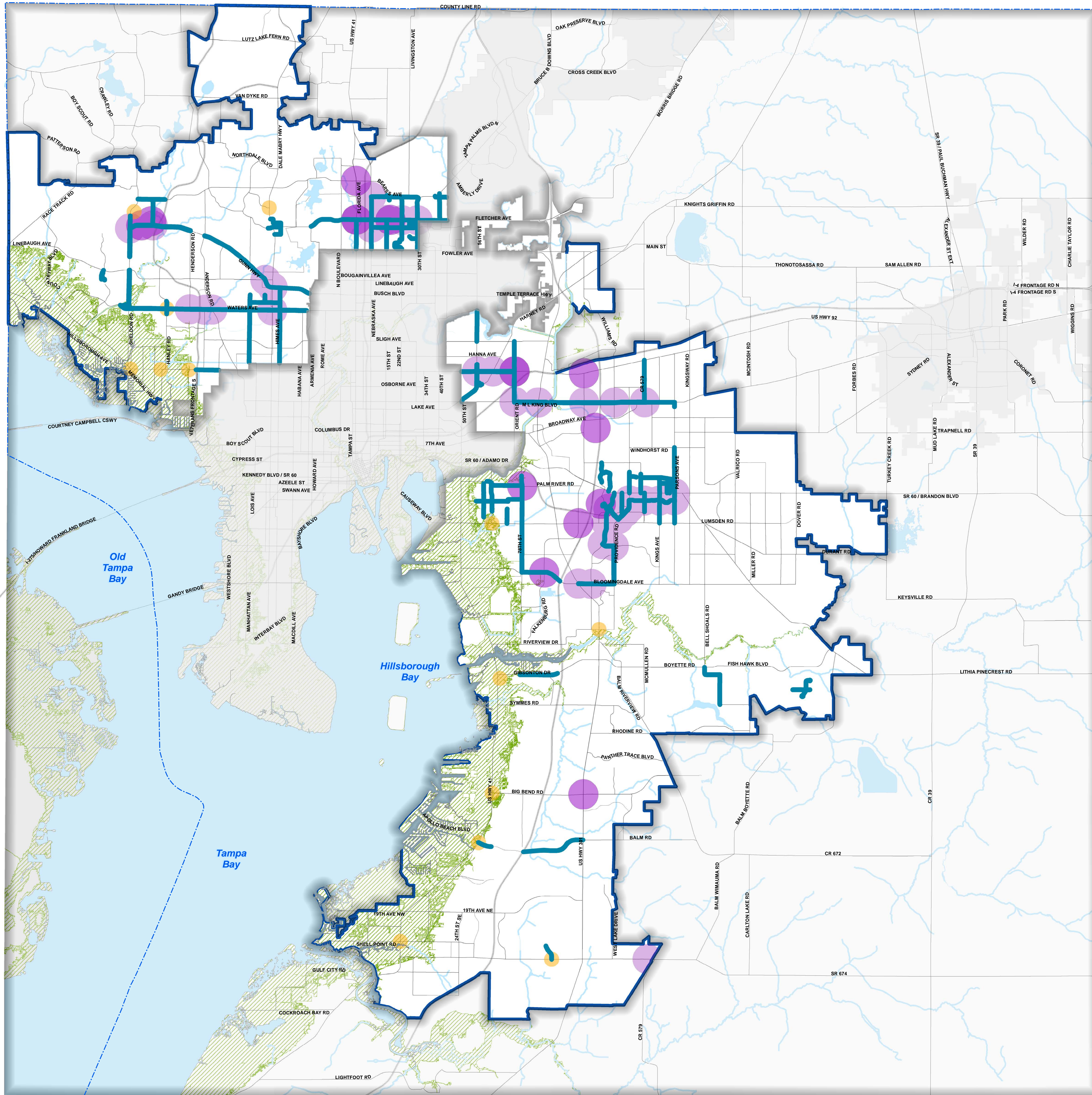


LEGEND

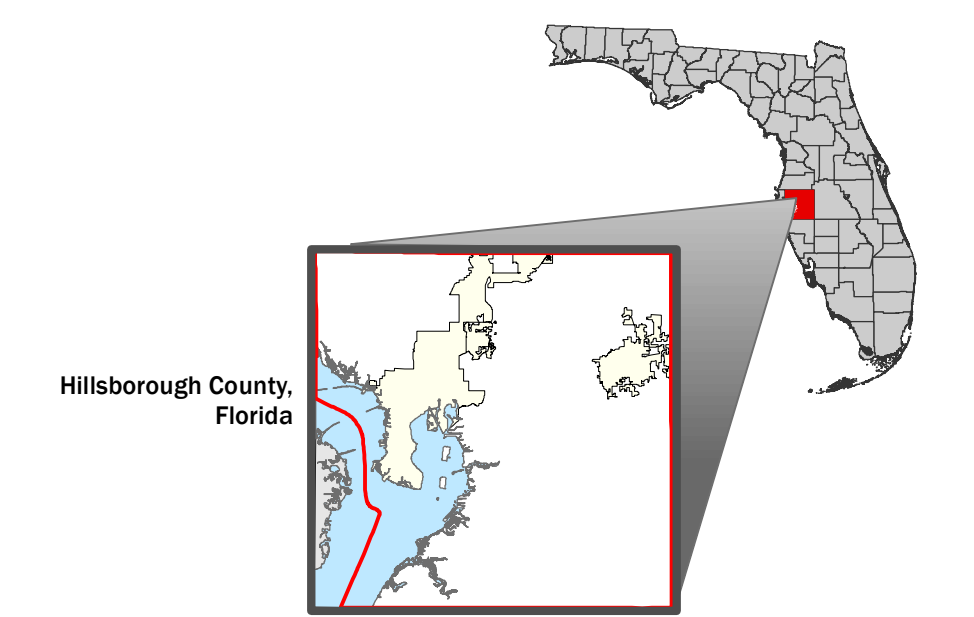
- CONNECTIONS
- COMMUNITY VISION NODES AND MAJOR INTERSECTIONS IN THE CHHA OR WITH SIGNIFICANT SINGLE FAMILY HOUSING
- COMMUNITY VISION NODES AND MAJOR INTERSECTIONS

ROADS AND BOUNDARIES

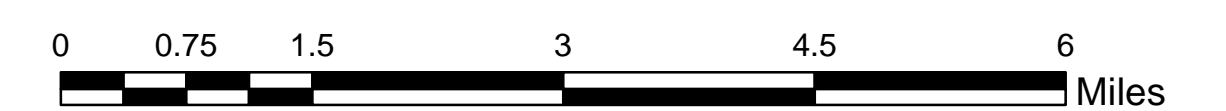
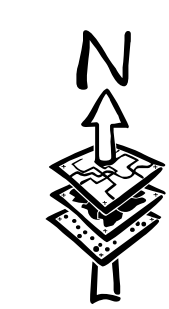
- LIMITED ACCESS ROADS
- MAJOR ROADS
- URBAN SERVICE AREA
- COUNTY BOUNDARY
- CREEKS, RIVER, & STREAMS
- COASTAL HIGH HAZARD AREA
- WATER



LOCATOR MAP AND REFERENCE INFORMATION



NODES, INTERSECTIONS AND BUFFERS: Hillsborough County, Hillsborough TPO.
 JURISDICTIONAL AREAS: Updated by plan amendment. Effective to present.
 MAJOR ROADS: Transportation Planning Organization Long Range Transportation Plan. See Adopted TPO Long Range Transportation Plan for specific improvements.
 ACCURACY: It is intended that the accuracy of the base map comply with U.S. map accuracy standards. However, such accuracy is not guaranteed by the Hillsborough County City-County Planning Commission.
 REPRODUCTION: This sheet may not be reproduced in part or full for sale to anyone without specific approval of the Hillsborough County City-County Planning Commission.



Author: R Mathie
 Date: 3/9/2023