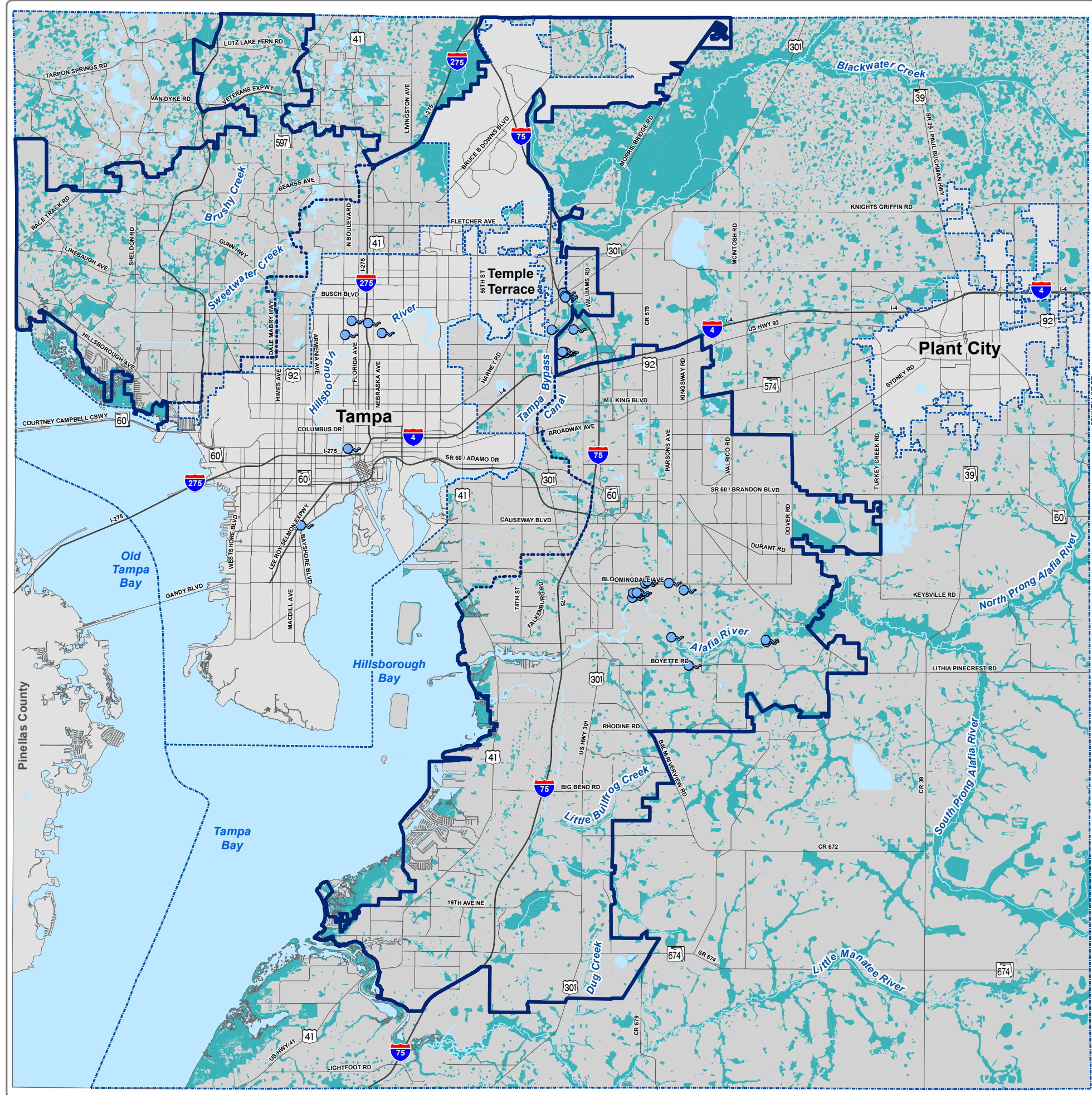
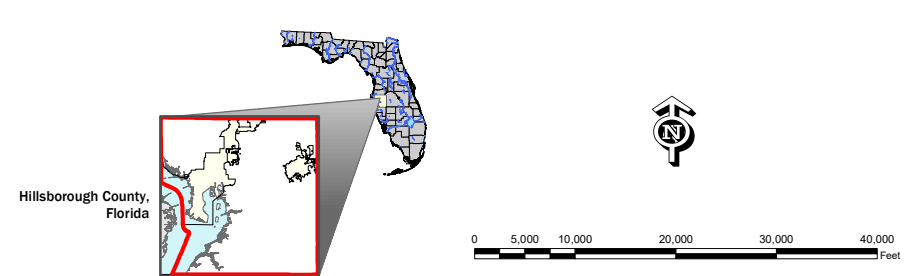


Unincorporated Hillsborough County RIVERS, BAYS, LAKES, SPRINGS AND WETLANDS ADOPTED FUTURE LAND USE MAP SERIES



- Legend**
- Rivers, Bays and Lakes
 - Wetlands
 - Springs
- Roads and Boundary Lines**
- County Boundary
 - Jurisdiction Boundary
 - Tampa Service Area
 - Urban Service Area
 - Existing Major Road Network
 - Limited Access Roads

Location Diagram and Reference Information



DATA SOURCES AND LIMITATIONS:
 WETLANDS: Southwest Florida Water Management District (SWFWMD).
 LAKES AND SPRINGS: Florida Department of Environmental Protection (FDEP).
 MAJOR ROADS: See Adopted MPO Long Range Transportation Plan for specific improvements.
 REPRODUCTION: This sheet may not be reproduced in part or full for sale to anyone without specific approval of the Hillsborough County City-County Planning Commission.
 ACCURACY: It is intended that the accuracy of the base map comply with U.S. national map accuracy standards. However, such accuracy is not guaranteed by the Hillsborough County City-County Planning Commission.

Author:
 Date: 5/14/2020
 Path: G:\gisroot\Projects\Cathy\Arcmap\NEW_MXD\CompPla\update_2020\Care_2020\uhc_natural_resources_wetlands_springs_2020.mxd



For more information about our organization visit website: www.planhillsborough.org