

# Health Impact Assessment of 2045 LRTP Complete Streets

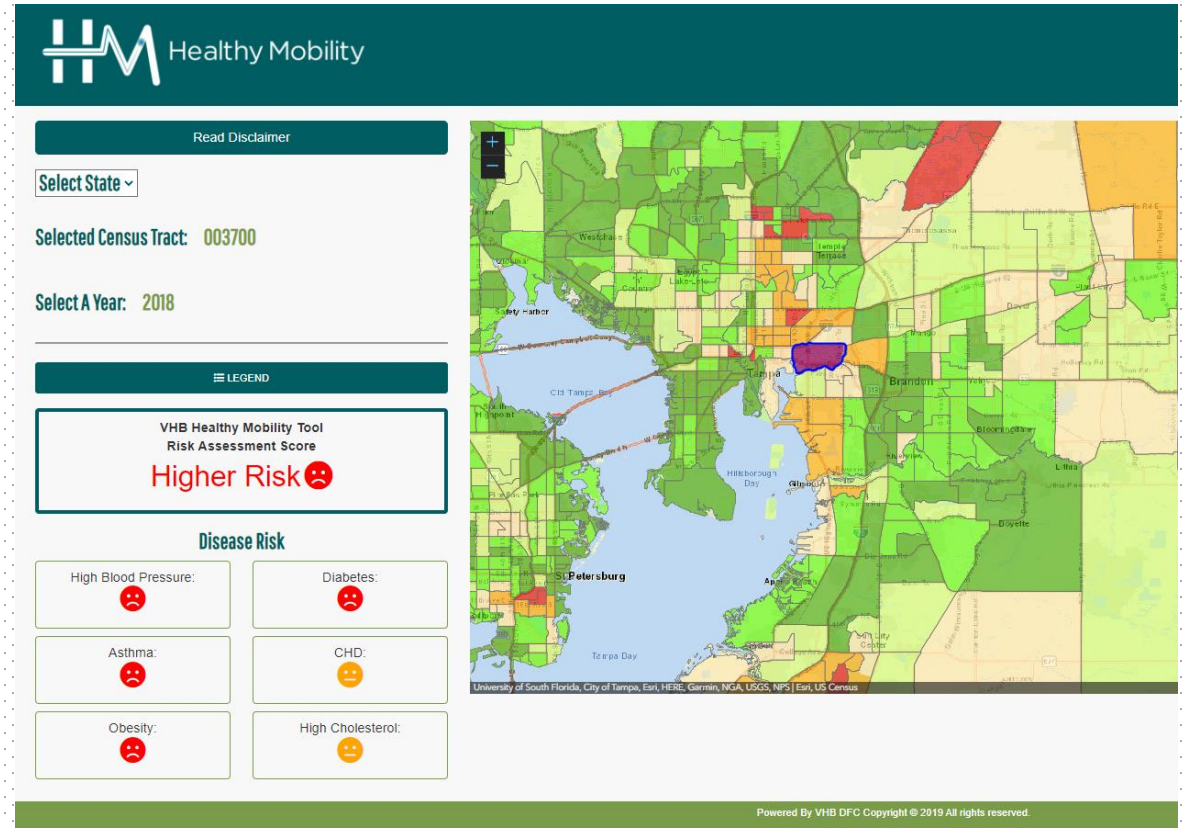
Hillsborough Transportation Planning Organization



planhillsborough.org

# Study Goal

Explore how implementation of Complete Street treatments would impact public health conditions and potentially reduce risk levels.



# Key Tasks

## Community Health Risk Assessment

- Apply Healthy Mobility Model; determine baseline; identify urban design and mobility variables that have relevance with each chronic health conditions

## Scenario Planning

- Choose Complete Street in each context; identify set of typical treatments
- Apply improvements to the severe crash roadways
- Determine the extent in which projects impact chronic disease risk factors



# Project Schedule

	March				April				May					June				
	7-Mar	14-Mar	21-Mar	28-Mar	4-Apr	11-Apr	18-Apr	25-Apr	2-May	9-May	16-May	23-May	30-May	6-Jun	13-Jun	20-Jun	27-Jun	4-Jul
<b>Task 1: Kickoff</b>																		
<b>Task 2: Data Collection</b>																		
<b>Task 3: Community Health Risk Assessment</b>																		
Calibrate Model																		
Prepare and Submit Tech Memo																		
<b>Task 4: Scenario Planning</b>																		
Methodology Meeting																		
Develop Scenarios																		
Analysis																		
Prepare and Submit Tech Memo																		
<b>Task 5 Presentation to TPO Board</b>																		

10-Aug



# TPO Project Manger

## **Joshua Barber, AICP**

TDCB Staff Liaison and Civil Rights Officer  
Hillsborough Transportation Planning Organization

(813) 576-2313

[barber@plancom.org](mailto:barber@plancom.org)



# Freight Supply Chain Resilience Study

Hillsborough Transportation Planning Organization



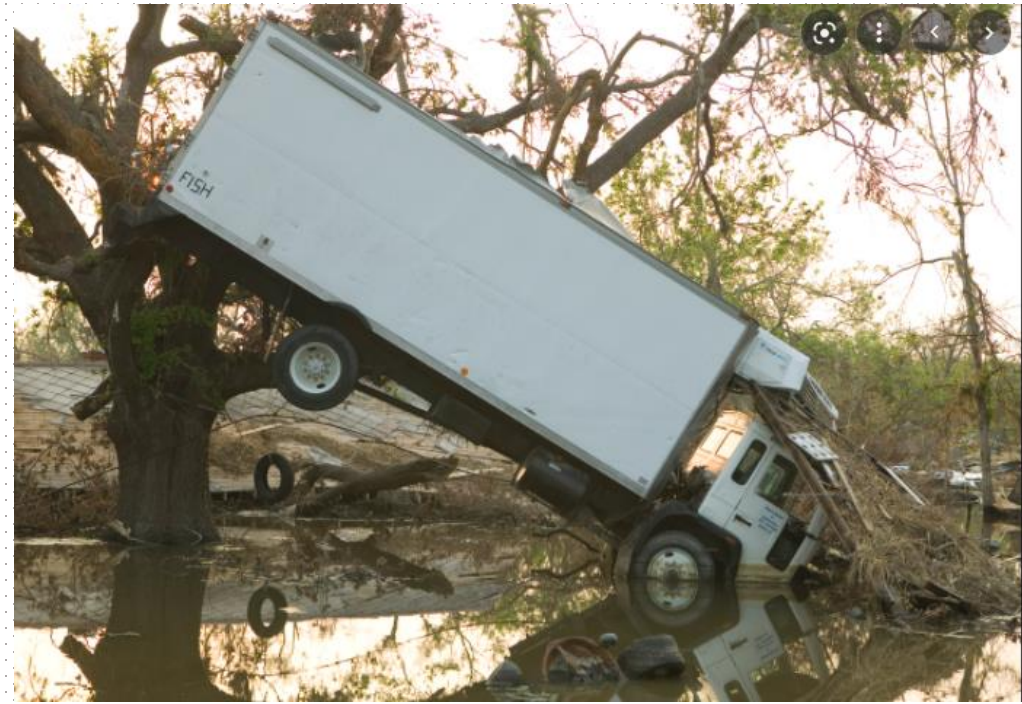
planhillsborough.org

---

## Study Goals

Identify key supply chains in Hillsborough County and how they could be impacted under disaster scenarios.

- Map the supply chains
- Identify potential vulnerabilities
- Recommend actions to mitigate & strengthen
- Establish ongoing engagement



---

# Key Tasks

## Commodity/Service & Disaster Scenario Selection

- Define methodology & approach; identify commodities/services & disaster scenarios; interview stakeholders

## Analysis

- Conduct flow analysis for 5 commodities under normal & disaster scenarios; map supply chains; interview key agency & private stakeholders to understand supply chain & distribution patterns

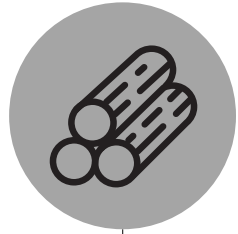
## Recommendations

- Preliminary recommendations; share at public event; finalize recommendations





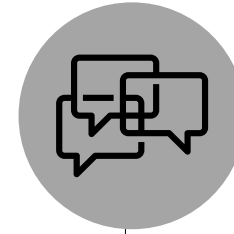
# Project Schedule



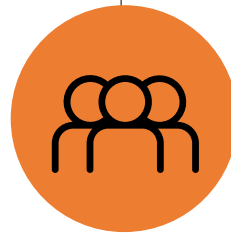
**Task 1**  
Commodity/Service &  
Disaster Scenario Selection  
**February – March 2022**



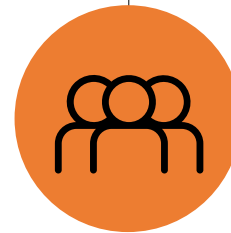
**Task 2**  
Commodity Flow Analysis &  
Supply Chain Resiliency  
Analysis  
**March – May 2022**



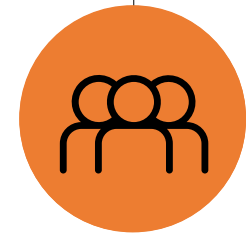
**Task 3**  
Supply Chain Resiliency  
Recommendations  
**May – July 2022**



Stakeholder  
Small Group  
Interviews  
**April 2022**



Stakeholder  
One-on-One  
Interviews  
**May 2022**



Large  
Stakeholder  
Group Meeting  
**June 2022**



---

# TPO Project Manger

## **Allison Yeh, AICP, LEED GA**

Assistant Executive Director, Sustainability Coordinator

Hillsborough Transportation Planning Organization

(813) 582-7351

[yeha@plancom.org](mailto:yeha@plancom.org)



# Data Sharing Platform Enhancements

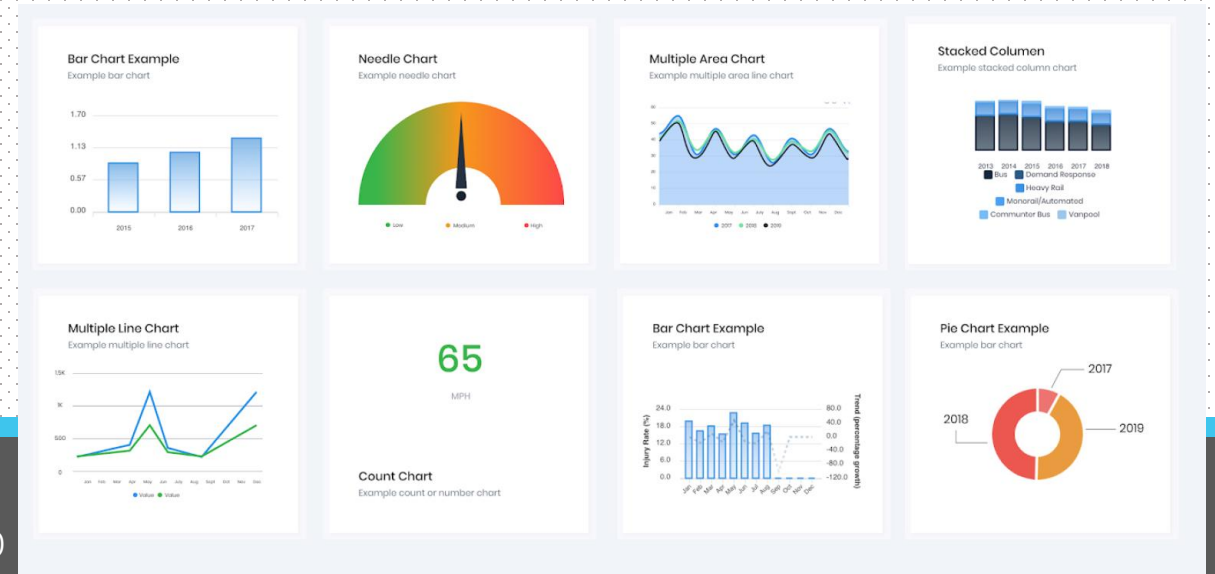
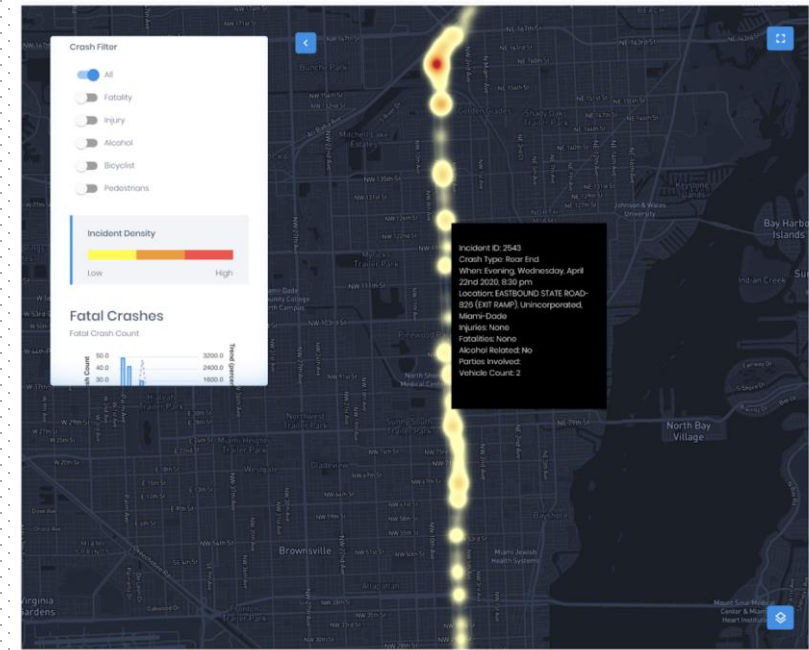
Hillsborough Transportation Planning Organization



planhillsborough.org

# Study Goal

Produce a crash and travel time reliability forecasting model to be integrated into the TPO's performance measurement portal.



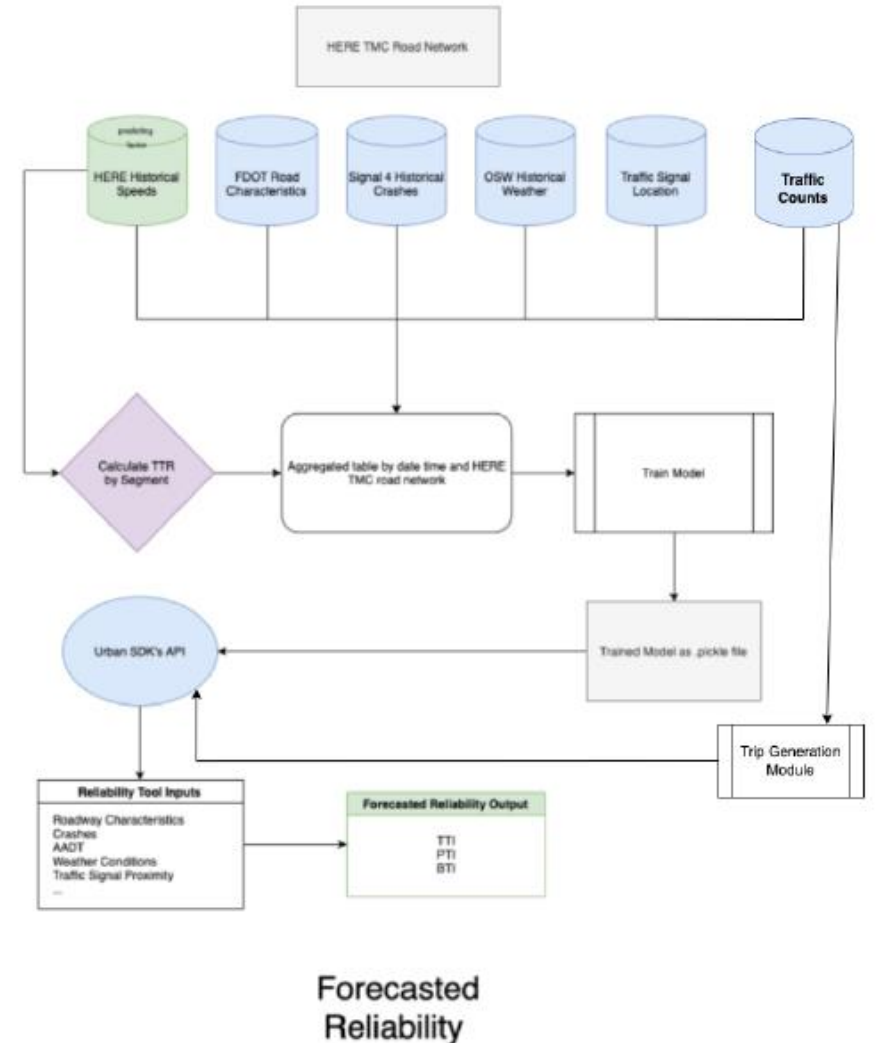
# Key Tasks

## Reliability and Safety Forecasting Model

- Re-evaluate existing reliability and safety models
  - Predicting volumes; computing average travel time; calculating performance
- Integrate into the Data & Analytics Platform
  - Users can access, edit, visualize, create reports

## Traffic impact analysis tool

- Estimate congestion/reliability from proposed land development



# Project Schedule

- Kick-off – March 22
- Technical memos – June/July
- Software integrated into Data Platform – Oct/Nov



---

# Project Mangers

**Johnny Wong, PhD** Executive Planner  
Hillsborough Transportation Planning Organization  
(813) 699-7370  
[wongj@plancom.org](mailto:wongj@plancom.org)

**Sarah Caper**, Executive Planner  
Hillsborough County Community & Infrastructure Planning  
(813) 807-0743  
[capers@hillsboroughcounty.org](mailto:capers@hillsboroughcounty.org)



# Tampa School Transportation Safety Study

Hillsborough Transportation Planning Organization



planhillsborough.org



# Study Goals

- Build on the School Safety Study developed in September 2018
- Identify transportation improvements around and connecting to a set-of schools
- Develop school specific education and encouragement strategies and a template for other schools in the district



Photo Source: Sidewalk Stompers



# Key Tasks

**Establish stakeholder group**, which includes City of Tampa, Sidewalk Stompers, HC School District, City of Tampa Police, HCSO, FDOT, and others

**Prioritize schools** to include in focus study based primarily on equity factors and transportation safety

**Survey school families** about travel patterns and barriers to school and survey schools about existing SRTS programs

**Assess existing SRTS programs** at area schools

Identify Engineering **Countermeasures**

Establish a library of **Educational and Encouragement materials** that can be used to support individual school programs



# Project Schedule

- Kick-off – March/April
- Survey and school selection – April
- Stakeholder Interviews & school site observations – May
- Develop strategies – June/July
- Apply education and encouragement strategies – August for start of 2022-2023 school year



# TPO Project Manger

**Lisa K. Silva, AICP, PLA**

Principal Planner, Active Transportation and Vision Zero  
Hillsborough Transportation Planning Organization

(813) 665-1329

[silval@plancom.org](mailto:silval@plancom.org)



# Plant City Canal Trail Study

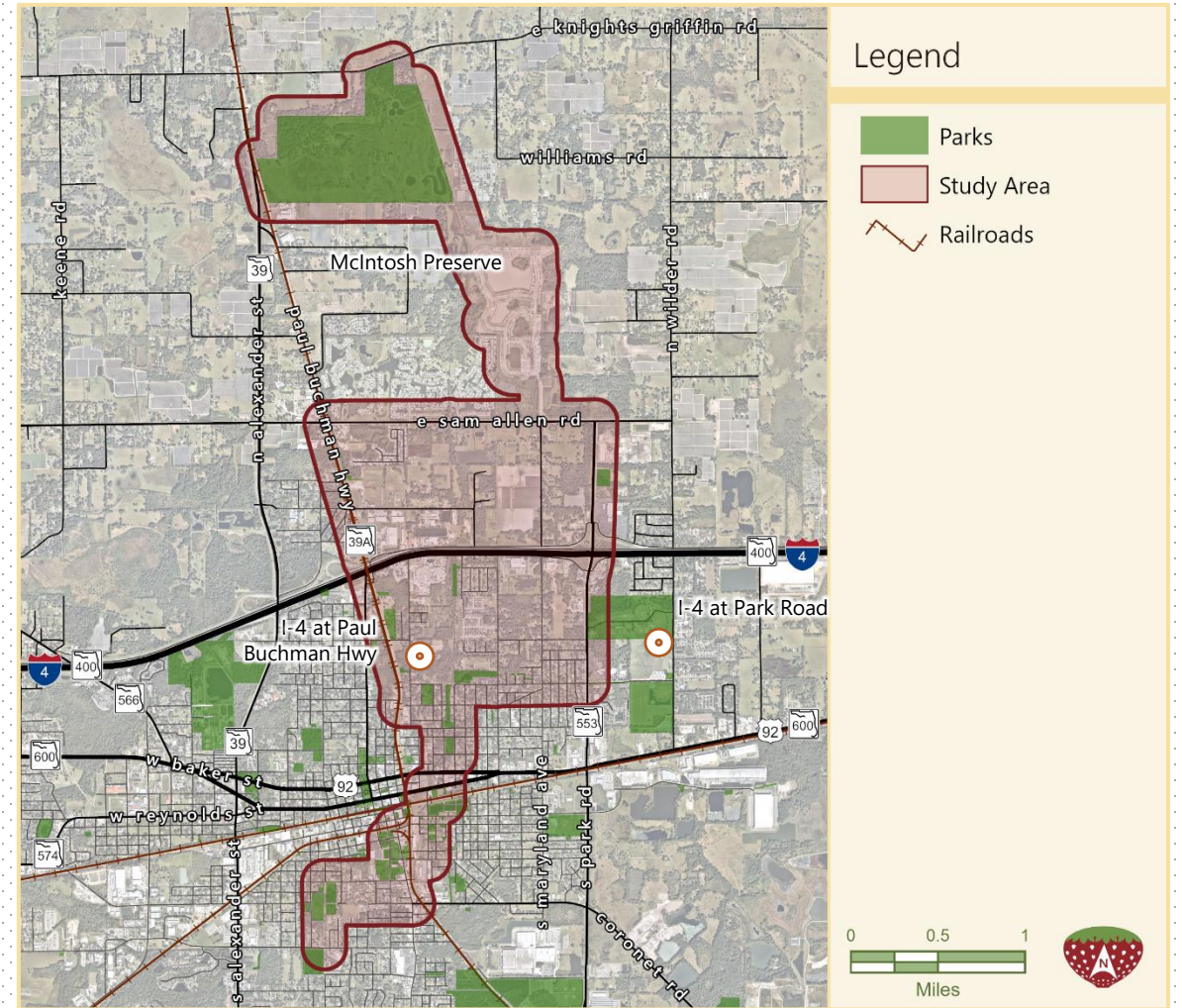
Hillsborough Transportation Planning Organization



planhillsborough.org

# Study Goals

- Identified in Bicycle and Pedestrian Plan (2017) - "Canal Connector Trail"
- Connect to NE Plant City developments, recreation opportunities, and Downtown
- Connect to local parks and trailheads
- Connect across Interstate-4



# Key Tasks

Evaluate up to 3 alignments based on:

## Engineering

- Identify barriers and right of way needs

## Environmental

- Identify impacts to natural and built environment

## Social and Economic

- Identify effects of trail on community values – quality of user experience
- Opportunities for economic development



# Project Schedule

★ Major Milestones

Tasks	Feb	Mar	Apr	May	Jun	Jul	Aug	Sep	
Stakeholder/ Public Outreach	★	—————					★	—————	★
		City Kick-Off					Public Kiosks	Study Presentation	
Data Collection		—————							
Define/Select Alternatives			—————						
Alternative Development					—————				
Implementation Plan							—————		
Final Documentation						—————			





# TPO Project Manger

## **Wade Reynolds, AICP**

Principal Planner, Bike/Ped/Health

Hillsborough Transportation Planning Organization

(813) 793-2361

[reynoldsw@plancom.org](mailto:reynoldsw@plancom.org)



# Hillsborough County Bicycle Network Evaluation

Hillsborough Transportation Planning Organization



planhillsborough.org

# Study Goals

- Identify, evaluate, and prioritize bicycle facility needs on the Hillsborough County roadway network



# Key Tasks

- Inventory existing bicycle facilities
- Review current plans, programs, studies
- Develop and map the network
- Develop prioritization methodology and apply to network
- Develop recommendations, design concepts, cost estimates on four selected segments



# Project Schedule

- Kickoff - March 2022
- Prioritization screening, list and map – May
- Concept plans on four segments - June
- Public input/committee briefings – May/July
- Completion - September 2022



# TPO Project Manger

## **Wade Reynolds, AICP**

Principal Planner, Bike/Ped/Health

Hillsborough Transportation Planning Organization

(813) 793-2361

[reynoldsw@plancom.org](mailto:reynoldsw@plancom.org)

