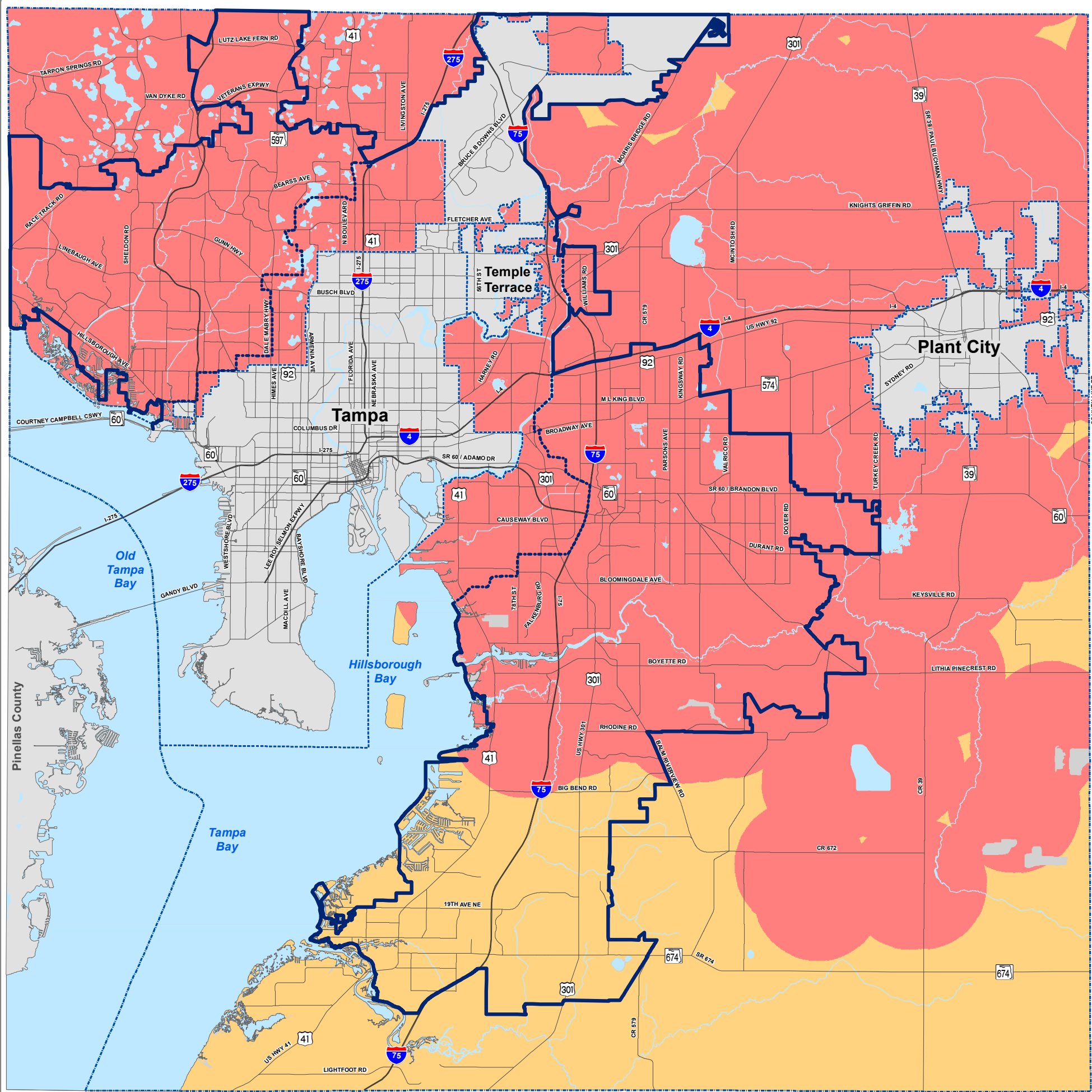


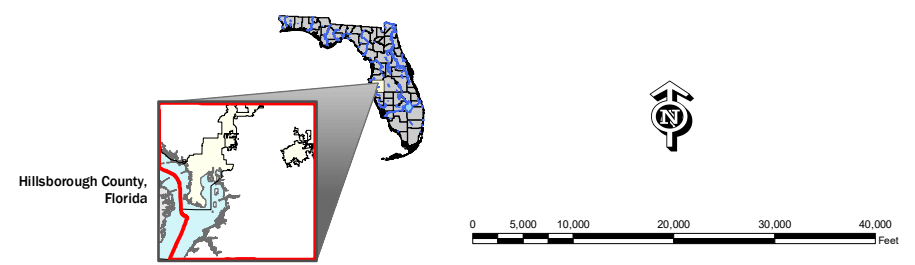
Unincorporated Hillsborough County AREAS SUSCEPTIBLE TO GROUNDWATER CONTAMINATION ADOPTED



Legend

- Relative Vulnerability**
- More Vulnerable
 - Vulnerable
- Roads and Boundary Lines**
- County Boundary
 - Jurisdiction Boundary
 - Tampa Service Area
 - Urban Service Area
 - Existing Major Road Network
 - Limited Access Roads

Location Diagram and Reference Information



DATA SOURCES AND LIMITATIONS:
 GROUND WATER CONTAMINATION: Florida Department of Environmental Protection (FDEP)
 MAJOR ROADS: See Adopted MPO Long Range Transportation Plan for specific improvements.
 REPRODUCTION: This sheet may not be reproduced in part or full for sale to anyone without specific approval of the Hillsborough County City-County Planning Commission.
 ACCURACY: It is intended that the accuracy of the base map comply with U.S. national map accuracy standards. However, such accuracy is not guaranteed by the Hillsborough County City-County Planning Commission.

Author: CWelsh
 Date: 4/23/2020

Path: G:\gisroot\Projects\Cathy\Arcmap\NEW_MXD\CompPla\Update_2020\Care_2020\uhc_areas_susceptible_to_ground_water_contamination_2020_2.mxd



For more information about our organization visit website: www.planhillsborough.org