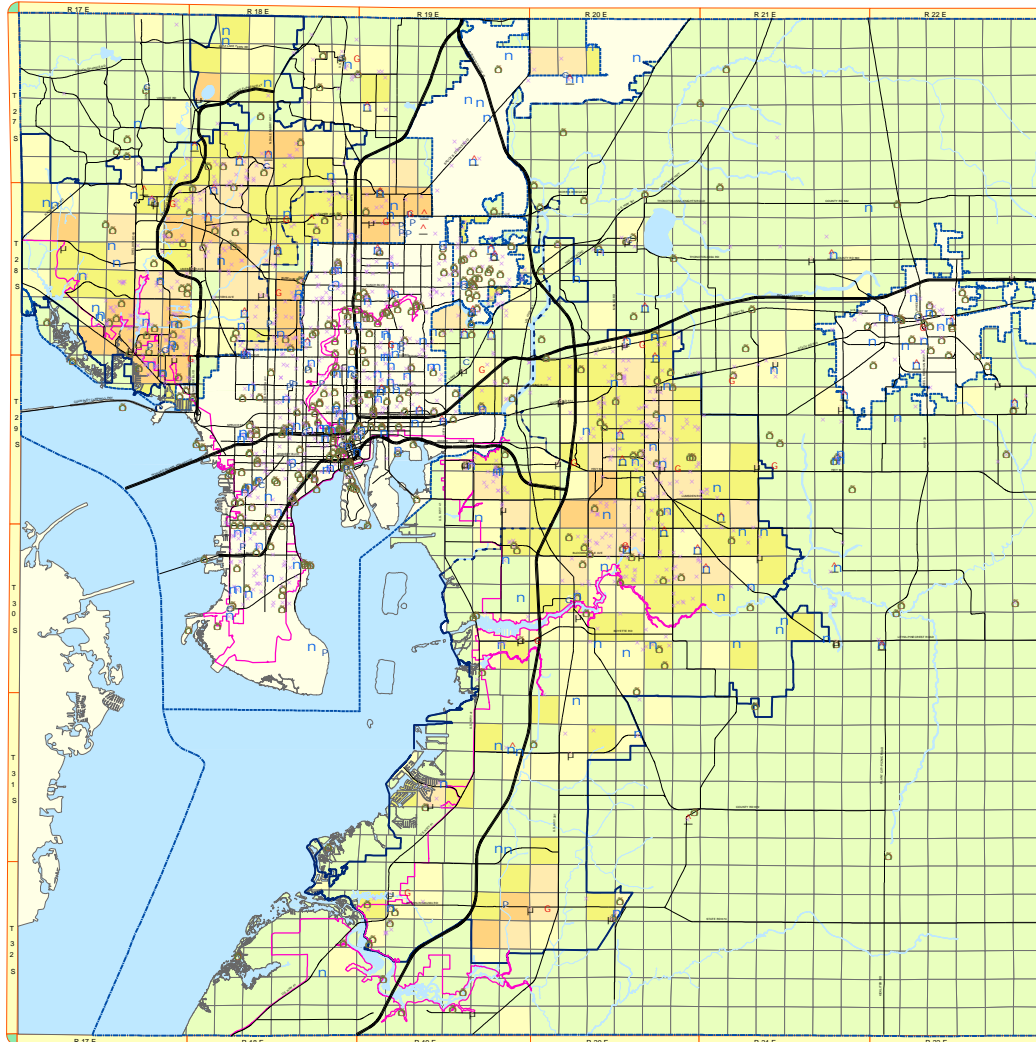


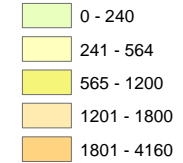
HILLSBOROUGH COUNTY

RESIDENTIAL DEVELOPMENT PATTERN IN PROXIMITY TO PUBLIC FACILITIES 2004



Residential Units

2004



PUBLIC FACILITIES Latest Available

- Park
- School
- Library
- μ Fire Station
- Child Care
- △ Shelter
- Hospital
- Emergency Services

Other Features

- Limited Access Roads
- Existing Roads
- CHH
- - - Tampa Service Area
- Urban Service Area
- Shoreline
- County Boundary
- Jurisdiction Boundary
- Major Rivers
- WATER

COASTAL HIGH HAZARD AREA (CHHA) DISCLAIMER:
Source: Tampa Bay Regional Planning Council, January 2000. The Coastal High Hazard Area, as shown on the Future Land Use Map (FLUM), is a general indication of the area defined in the most current regional hurricane evacuation study as requiring evacuation during a category one hurricane. More specific information can be obtained by reviewing the Tampa Bay Regional Planning Council's Hurricane Evacuation Map.

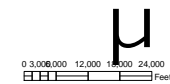
MAJOR ROADS: See Adopted MPO Long Range Transportation Plan for specific improvements.
DATA SOURCES: Base map, water (1985 satellite), as updated from Hillsborough County Engineering Services. Parcel lines and data from Hillsborough County Property Appraiser. Wetlands from SWFWMD. Significant Wetlands from Planning and Growth Management based on satellite imagery. Only Wetlands greater than 40 acres are depicted.

REPRODUCTION: This sheet may not be reproduced in part or full for sale to anyone without specific approval of the Hillsborough County City-County Planning Commission.

ACCURACY: It is intended that the accuracy of the base map comply with U.S. national map accuracy standards. However, such accuracy is not guaranteed by the Hillsborough County City-County Planning Commission. This map is for illustrative purposes only for the cities of Tampa, Tarpon Springs and Plant City.

LEGENDS: The Future Land Use designations on this legend depict valid land use colors and codes for UNINCORPORATED HILLSBOROUGH COUNTY only. The incorporated area colors do not correspond with the legend. Please consult the Hillsborough County City-County Planning Commission for specific Future Land Use maps of the cities.

INSET ON COUNTYWIDE: EGMONT KEY is not shown in exact location.



AUTHOR: D.P. Taber
DATE: Dec. 20, 2004
PROJECT: g:\gisroot\projects\dw\plan020\020\hillsboromunp2.mxd