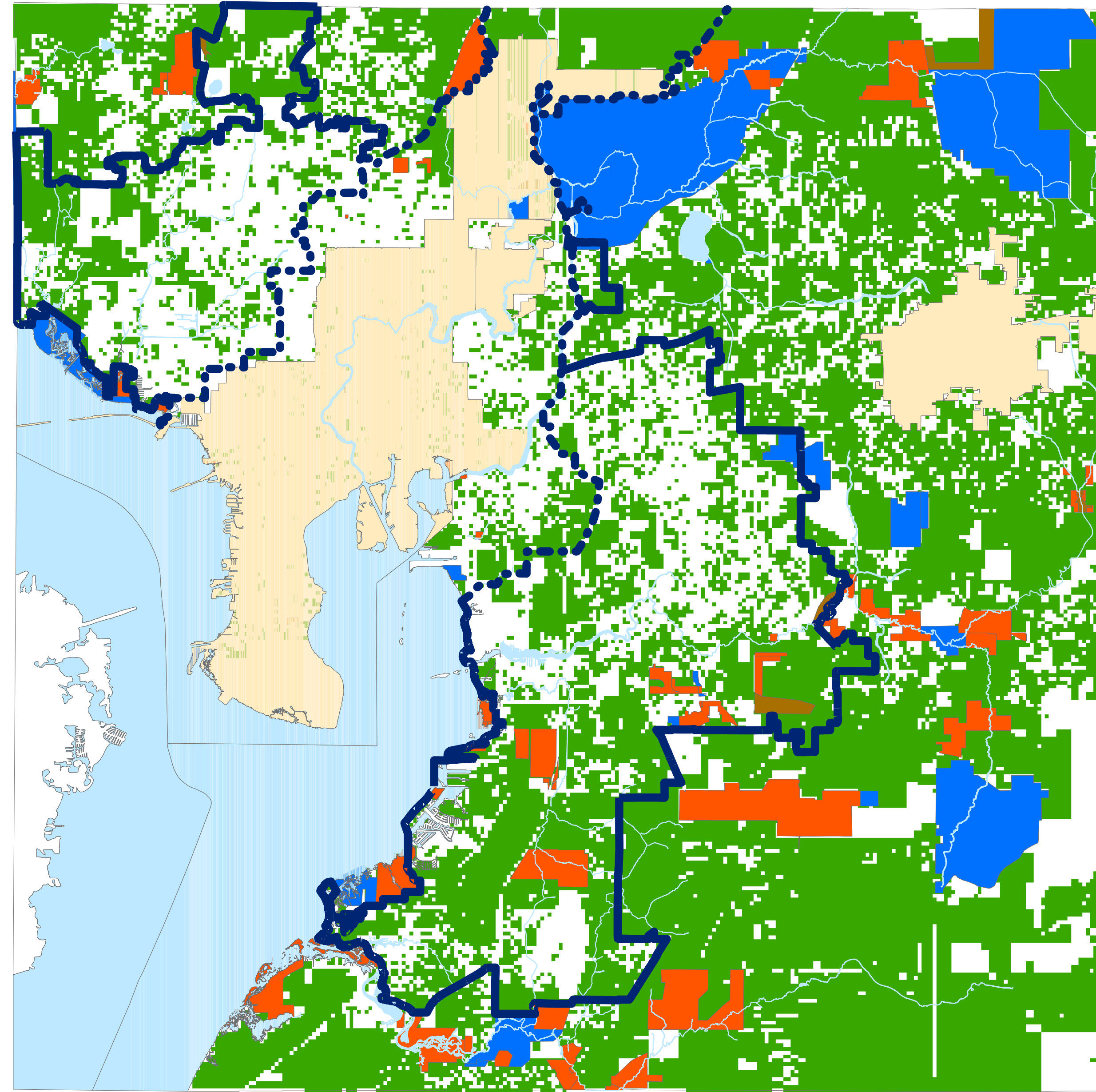


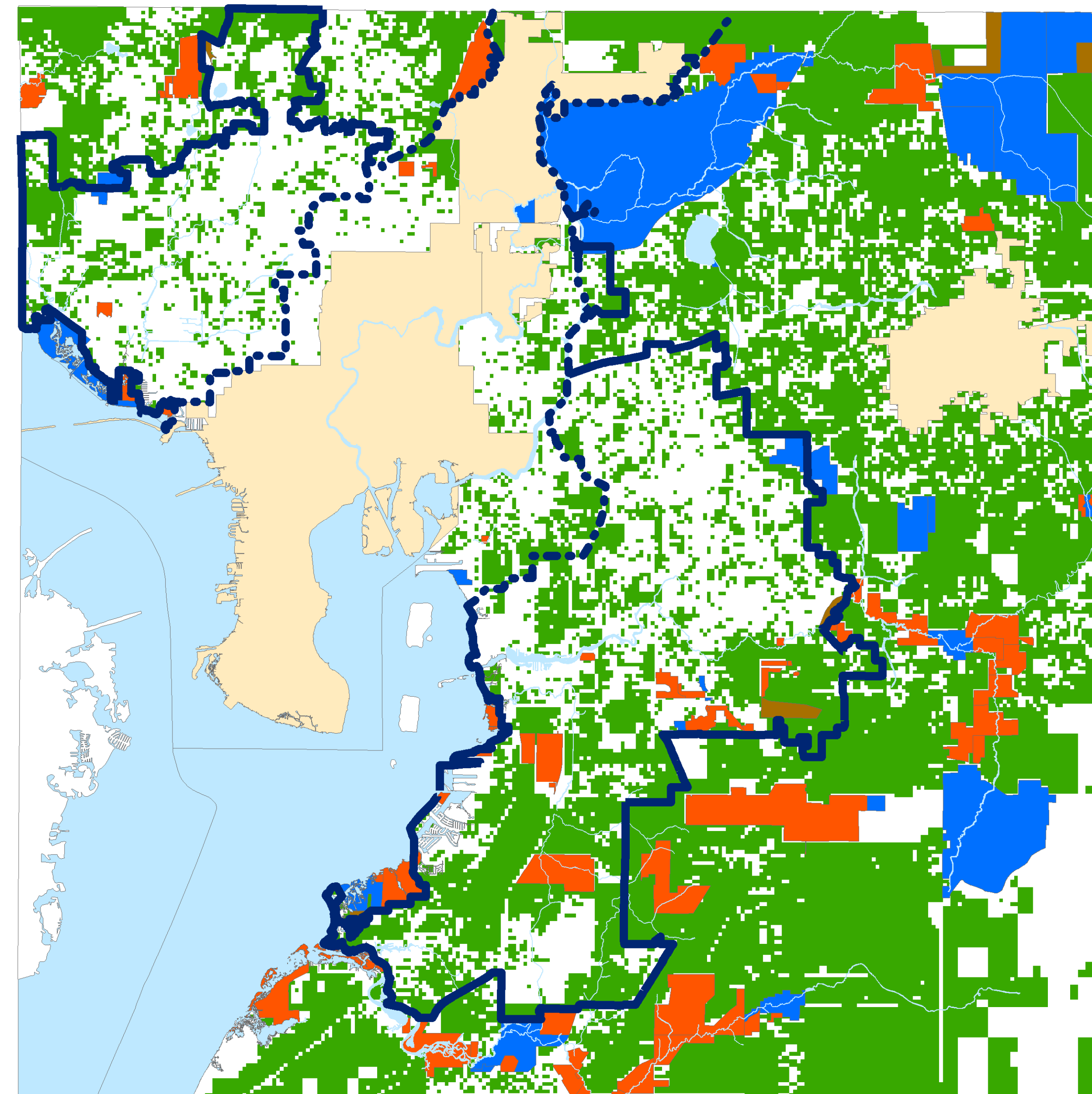
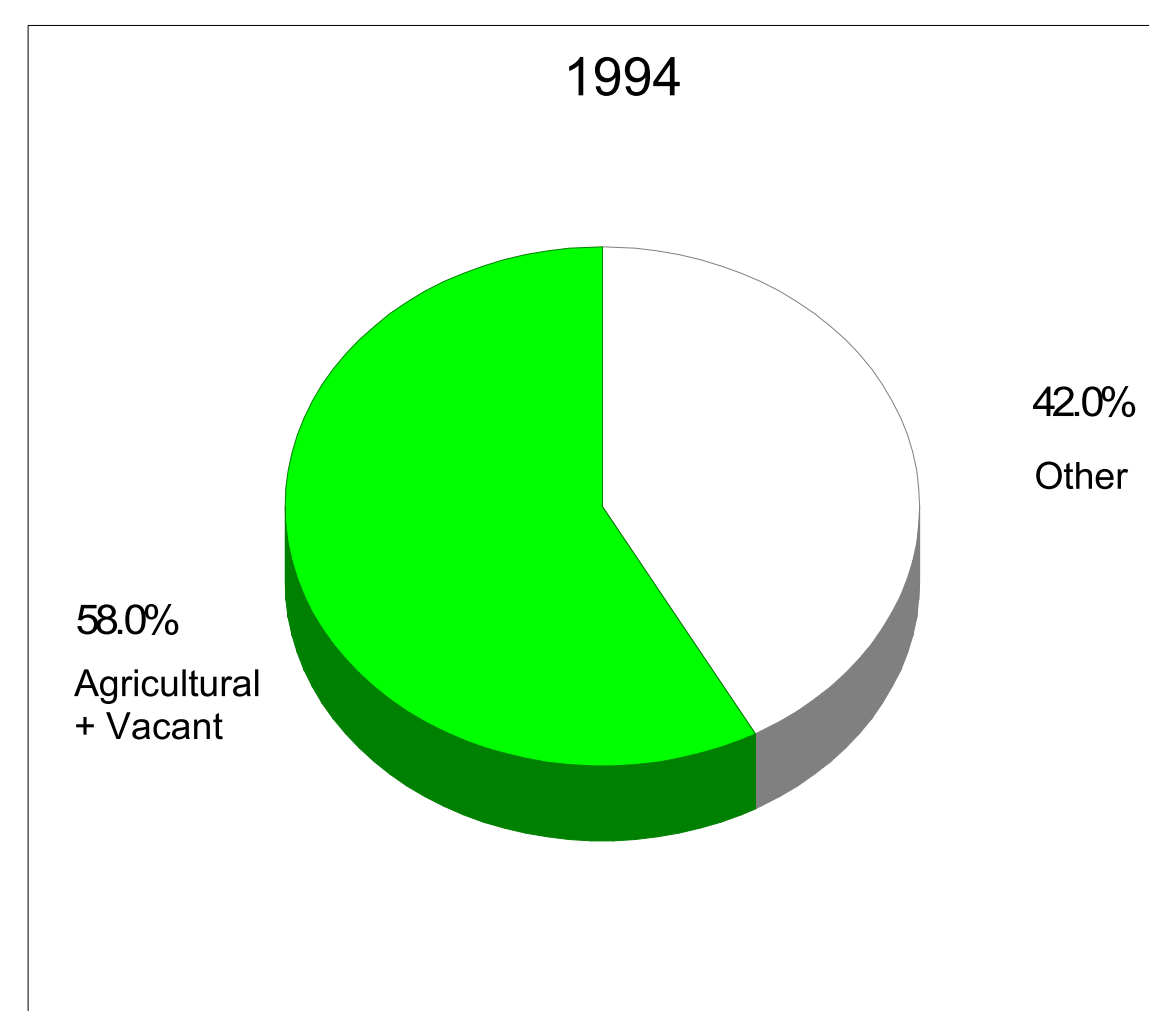
# UNINCORPORATED HILLSBOROUGH COUNTY

AGRICULTURE AND VACANT LAND CHANGE  
 AS DERIVED FROM GENERALIZED EXISTING LAND USE (ELU) CHANGE  
 FROM 1994 TO 2004  
 SHOWING 2004 URBAN SERVICE AREA  
 AND MAJOR PROTECTED ENVIRONMENTAL LANDS

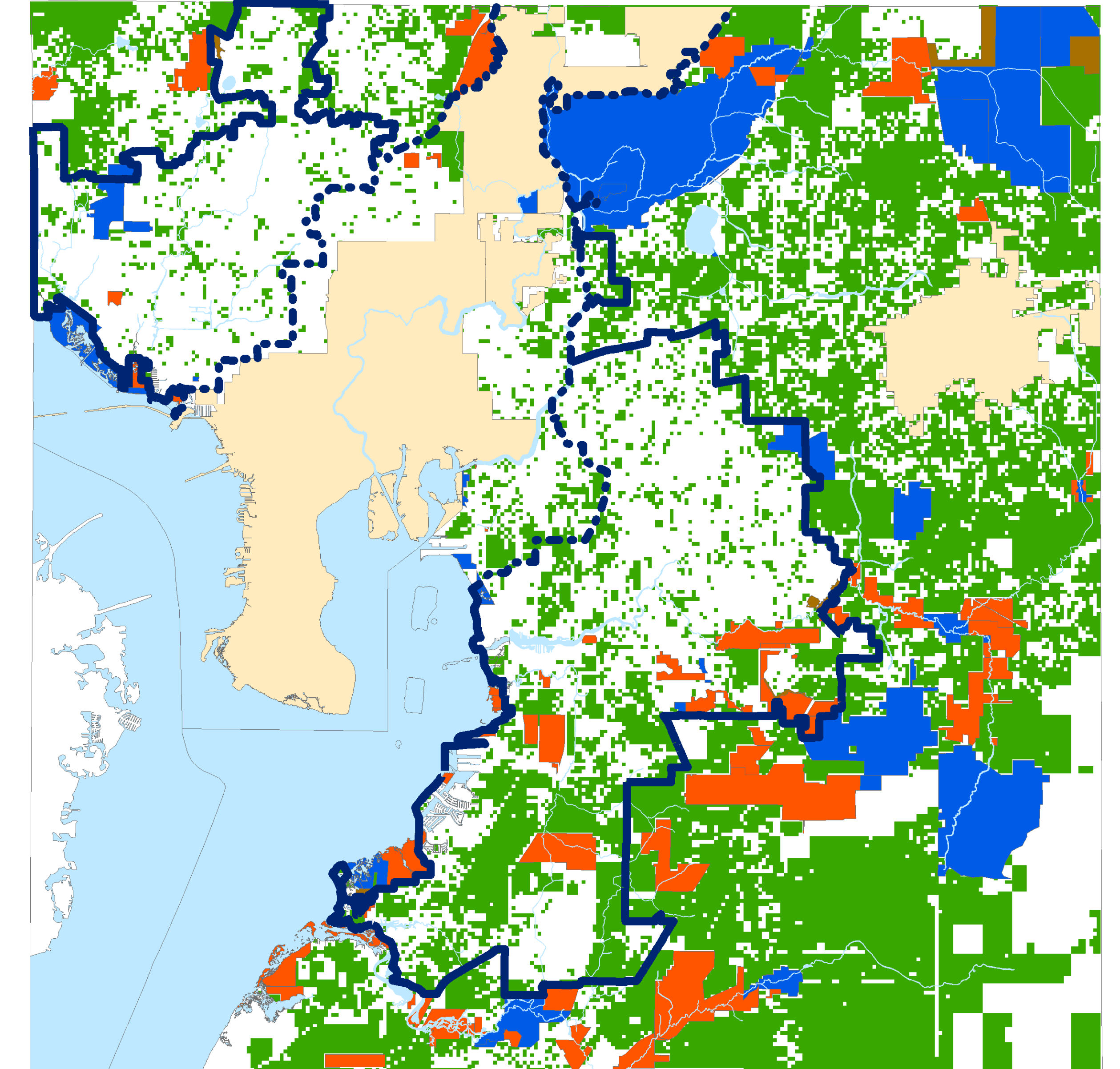
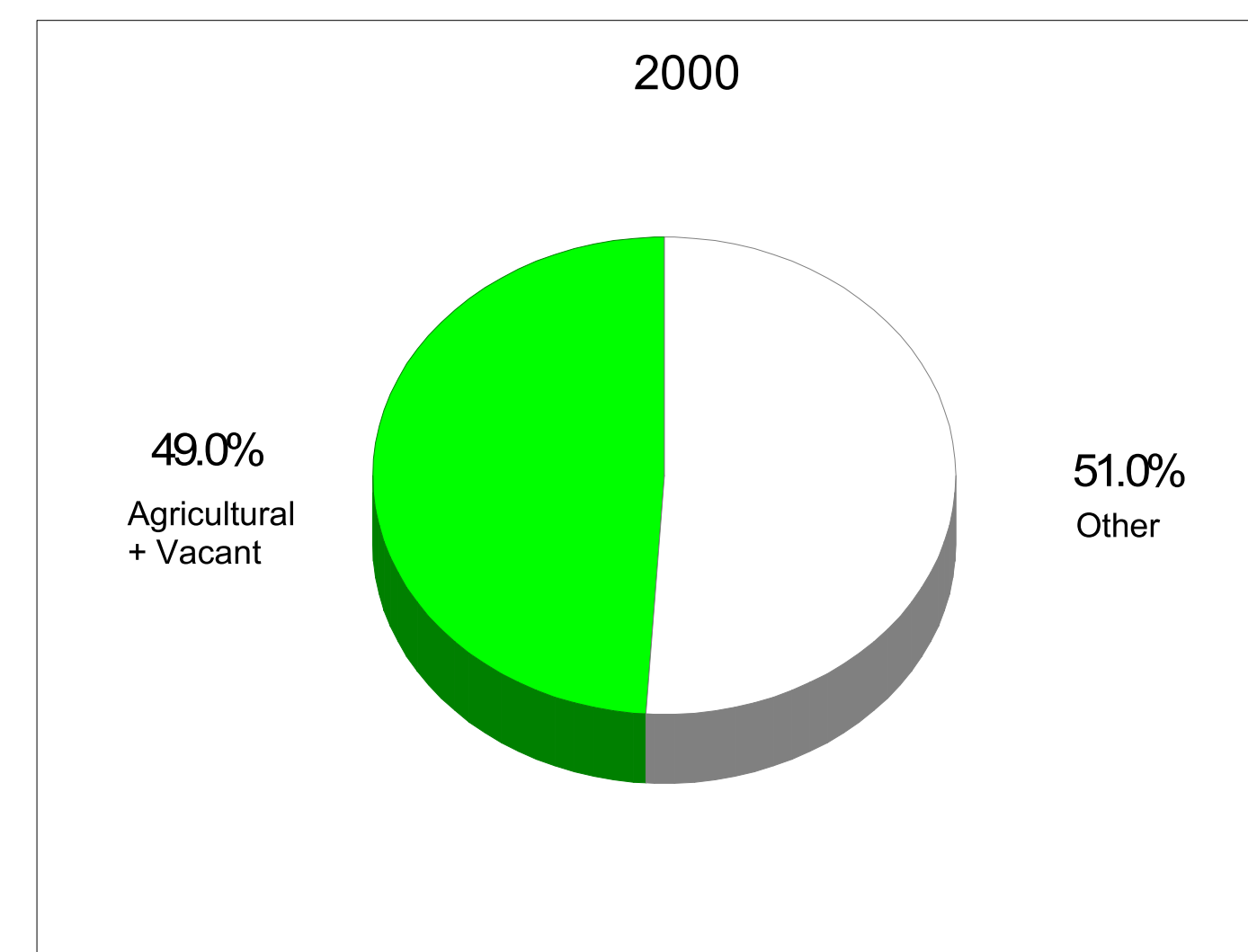
**DRAFT**



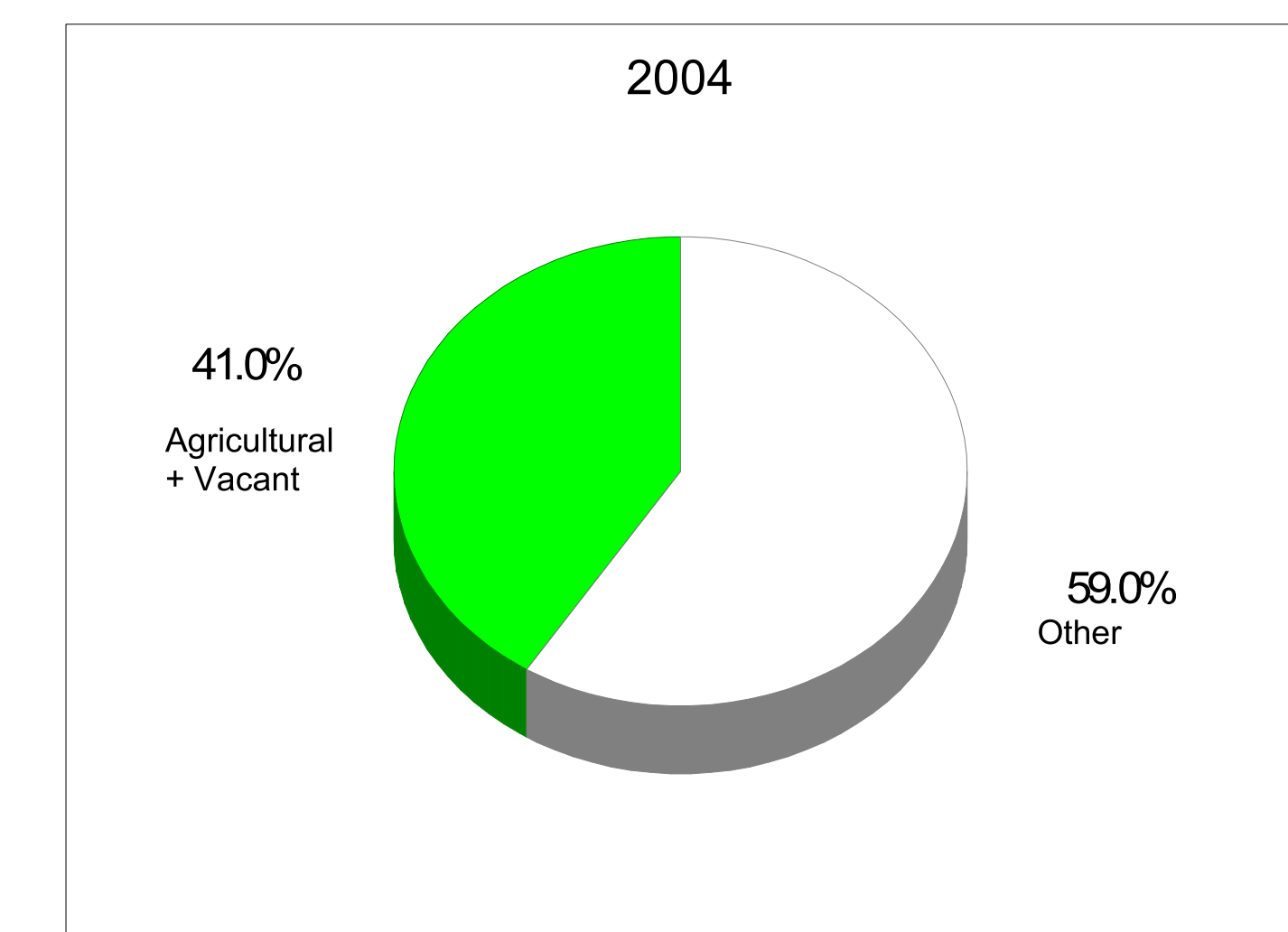
1994 Agriculture & Vacant Land  
 From Generalized Existing Land Use  
 (1997 Protected Environmental Lands)



2000 Agriculture & Vacant Land  
 From Generalized Existing Land Use



2004 Agriculture & Vacant Land  
 From Generalized Existing Land Use



### Legend

- Agricultural & Vacant
- Tampa Service Area
- Urban Service Area

### Major Protected Lands

- TYPE**
- ELAPP ACQUIRED SITE AREA
  - OTHER PRESERVATION
  - OTHER PUBLIC LAND

Environmental Lands Acquisition and Protection Program (ELAPP):  
 Source: Hillsborough County GIS. This map layer represents the best available data on protected lands. Property records should be reviewed for specific ownership. The data layers are:  
 Map dates were selected from sources available at time of publication of this map.

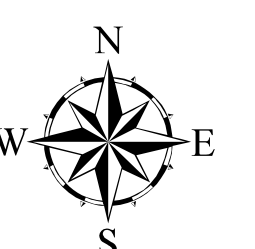
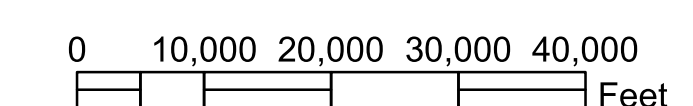
MAJOR ROADS: See Adopted MPO Long Range Transportation Plan for specific improvements.  
 DATA SOURCES: Basemap, roads, water (1985 aerials, as updated) from Hillsborough County Engineering Services. Parcel lines and data from Hillsborough County Property Appraiser. Wetlands from SWFWMD. Significant Wildlife Habitat from Planning and Growth Management based on satellite imagery. Only Wetlands greater than 40 acres are depicted.

REPRODUCTION: This sheet may not be reproduced in part or full for sale to anyone without specific approval of the Hillsborough County City-County Planning Commission.

ACCURACY: It is intended that the accuracy of the base map comply with U.S. national map accuracy standards. However, such accuracy is not guaranteed by the Hillsborough County City-County Planning Commission. This map is for illustrative purposes only for the cities of Tampa, Temple Terrace and Plant City.

LEGENDS: The Future Land Use designations on this legend depict valid land use colors and codes for UNINCORPORATED HILLSBOROUGH COUNTY only. The incorporated area colors do not correspond with the legend. Please contact the Hillsborough County City-County Planning Commission for specific Future Land Use maps of the cities.

INSET ON COUNTYWIDE: EGMONT KEY is not shown in exact location.



AUTHOR: Jamie Robe  
 DATE: 08/04/2004  
 PROJECT: G:\gisroot\projects\plan2025\maps\el\_u\_change\  
 agvac\_change\_press\_with\_charts\_v2.mxd

