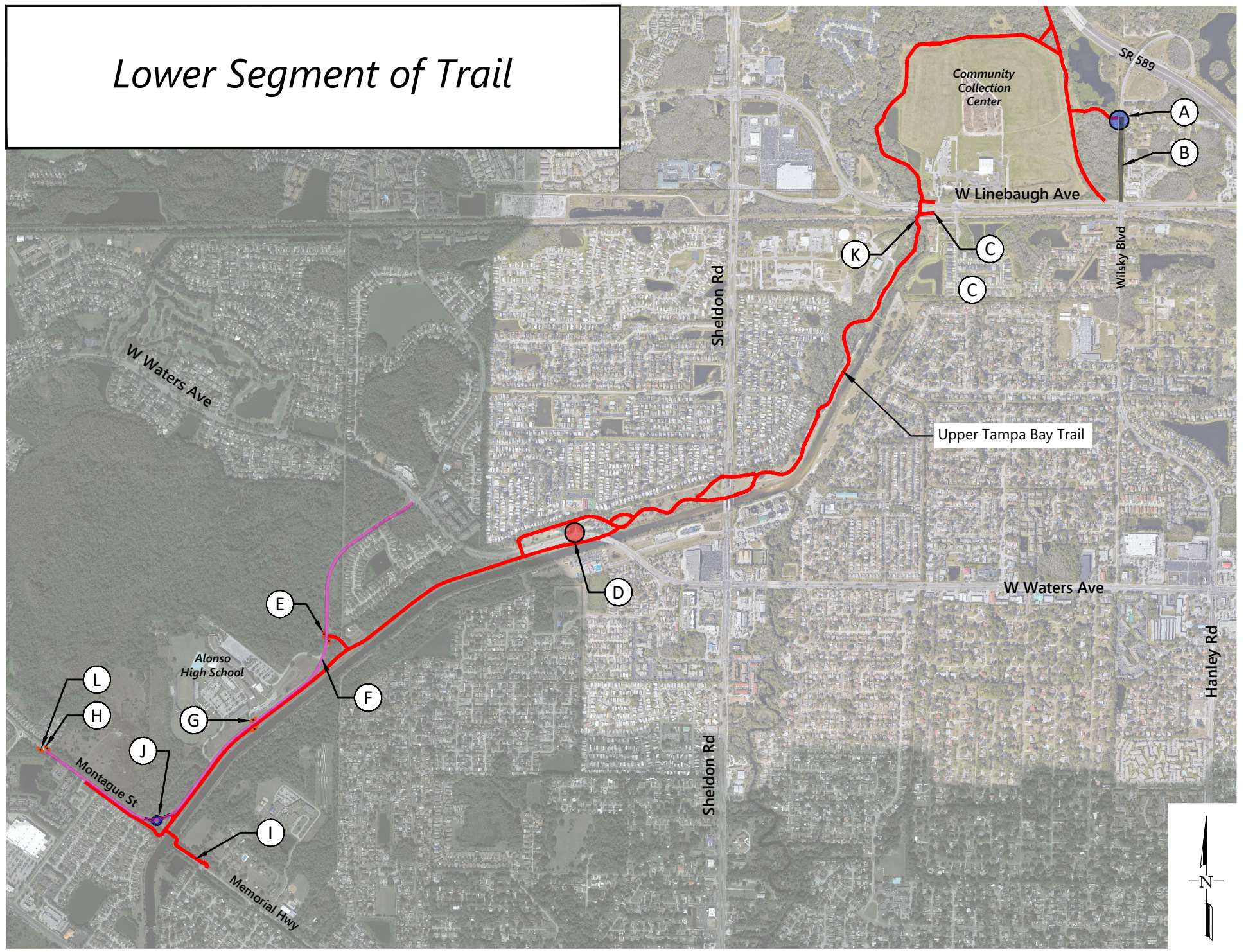





SAFE ACCESS TO PARKS



Preliminary Fix Ideas for Consideration: (This Sheet Only)

- | | |
|--|---|
| <ul style="list-style-type: none"> (A) Provide a marked crosswalk and other crossing treatments to connect neighborhood and sidewalk with trailhead. (B) Narrow the travel lane on Wilsky Road between Linebaugh and the trailhead to provide bike lanes. (C) Provide curb ramp to transition from bike lane to trail connection with way-finding. (D) Reconstruct the driveway to reduce the turn radius. (E) Provide a rectangular rapid flashing beacon (RRFB).  (F) Along Montague, evaluate potential to increase bicycle lane width by narrowing vehicle travel lane. | <ul style="list-style-type: none"> (G) Install a rectangular rapid flashing beacon (RRFB).  (H) Add a marked crosswalk and evaluate for other enhancement such as rectangular rapid flashing beacon (RRFB).  (I) Provide bicycle lanes with a design appropriate for the adjacent traffic volume on roadways that connect to trail and schools, like Memorial Highway. (J) Evaluate potential to install a roundabout at trail entrance to slow people driving on Montague Street. (L) Identify opportunities to connect to the Double Branch Trail and Pinellas Trail System. |
|--|---|

Trail Wide Considerations:

- Identify additional neighborhood connections that could be provided to the trail.
- Develop and implement a maintenance program to periodically refresh pavement markings, replace faded signs, address root intrusion that creates tripping hazards, and remove debris.
- Develop new county standards to convert stop signs for trail users to yield signs with enhancements to signing and striping on the roadway.
- Evaluate appropriateness of bicycle facilities on roadways connecting to the trail as traffic volumes and vehicle speeds may require separated paths or buffered bike lanes.
- Evaluate cycle lengths and overall signal phasing to decrease delay for people walking and bicycling. Rectify accessibility deficiencies at signalized intersections related to push button placement and accessible paths of travel.
- Evaluate Street lighting at crossing locations and conflict points.
- Evaluate appropriateness of posted speed limits along major corridors connecting to the trail, including Ehrlich Road, Citrus Park Drive, Gunn Highway, Gardner Road, Wilsky Boulevard, Linebaugh Avenue, Sheldon Road, Waters Avenue and Montague Street.
- Add and enforce a 15 mile per hour speed limit on trail.

NOTE: ALL PROPOSED CONSIDERATIONS WILL REQUIRE EXTENSIVE DATA COLLECTION, EVALUATION AND COMMUNITY OUTREACH

Figure 3
Upper Tampa Bay Trail - Lower Segment