



USF to Green ARtery Trail Study

MAY 2021

STUDY AREA

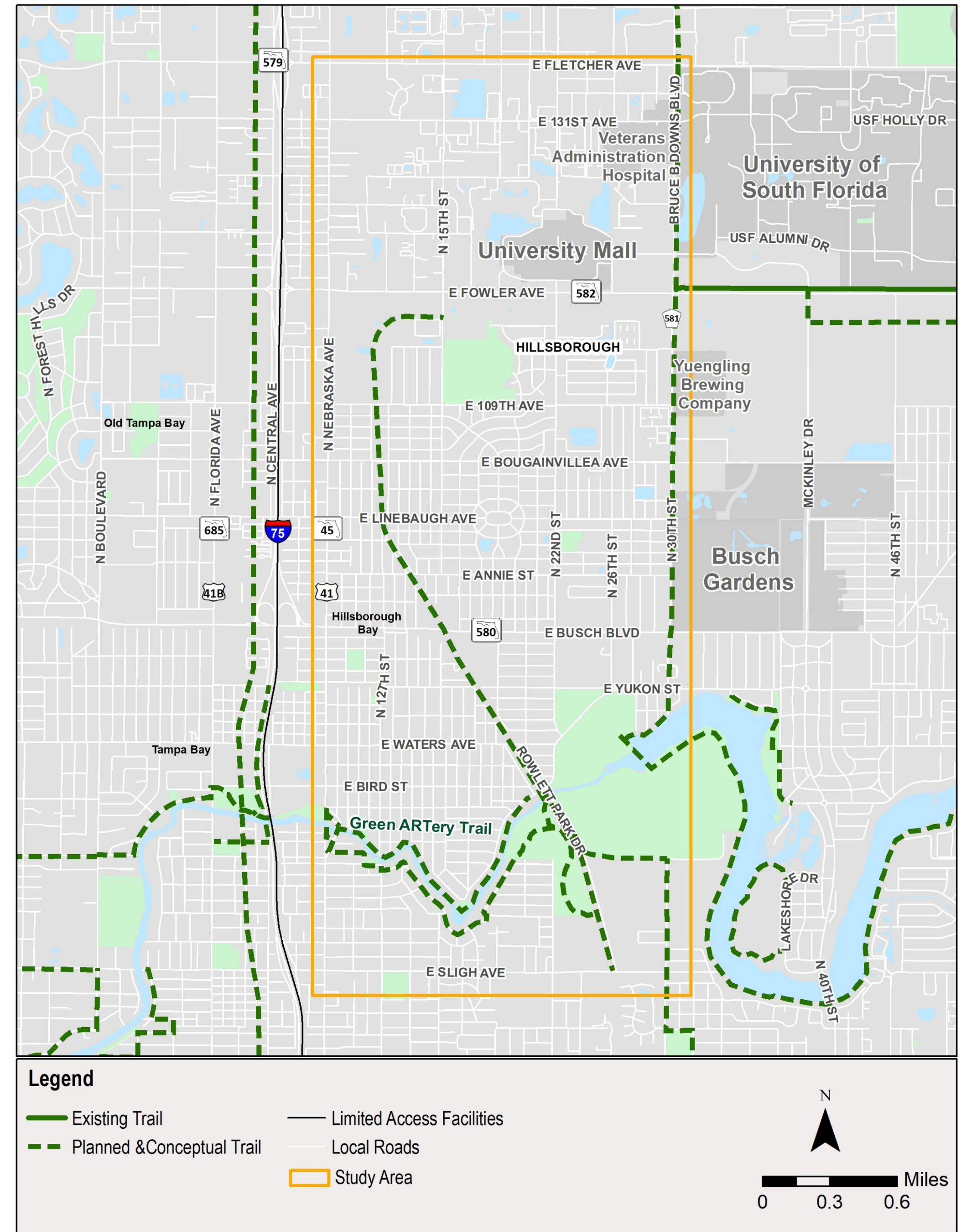
USF/Veterans Hospital to Planned Green ARtery Trail



Sulphur Springs, Tampa Overlook, North Tampa University Square, Old Seminole Heights



James A. Haley Veterans' Hospital, University Mall, University of South Florida, Rowlett Park, Busch Gardens, Copeland Park, Sulphur Springs Elementary School



STUDY PURPOSE

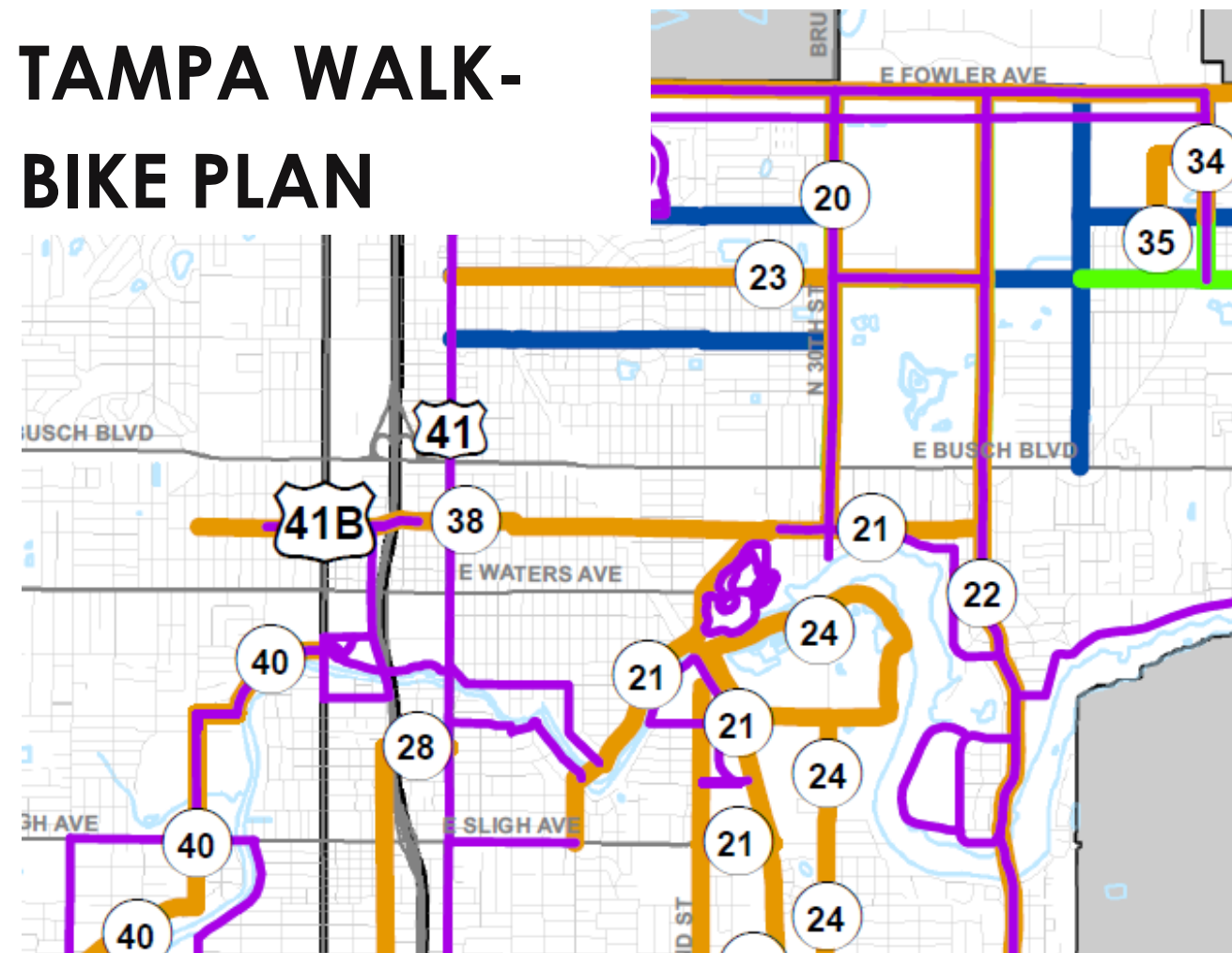
Determine the feasibility of a trail connecting the University of South Florida (USF) and Veterans Hospital with the planned Green ARtery Perimeter Trail and surrounding neighborhoods including proposed safe crossing locations on Fowler.

FDOT UNIVERSITY AREA MULTIMODAL FEASIBILITY STUDY



UPTOWN
MASTER PLAN

TAMPA WALK- BIKE PLAN



RECENT & ONGOING PROJECTS

KEY STAKEHOLDERS



Hillsborough
County Florida



Campus Hill Dr
Neighborhood

PUBLIC ENGAGEMENT PROCESS



**INDIVIDUAL
STAKEHOLDER
MEETINGS**

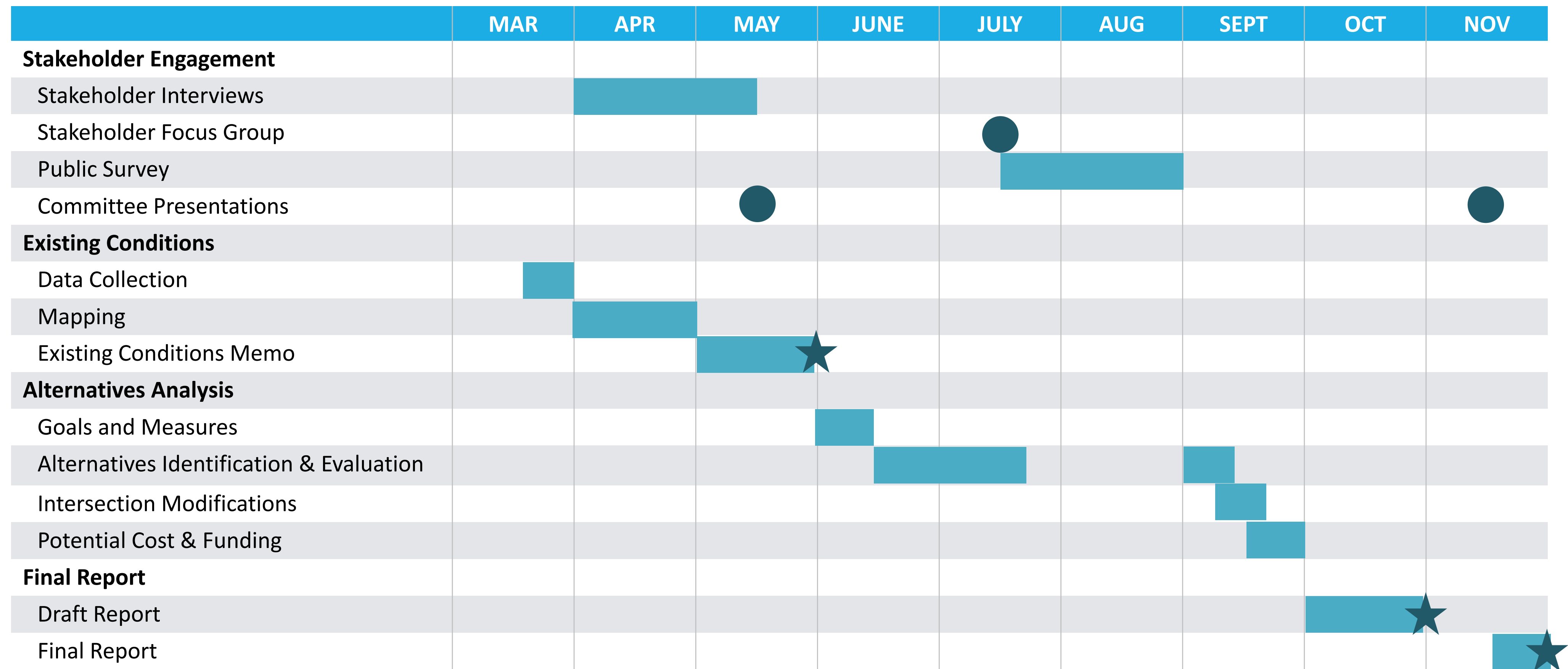


**STAKEHOLDER FOCUS
GROUP**



PUBLIC SURVEY

PROJECT SCHEDULE



● Stakeholder Engagement

★ Project Deliverable

NEXT STEPS

Existing Conditions Memo

Alternative Development

Public & Stakeholder Engagement