

Hillsborough MPO | Hillsborough County

Bruce B Downs Boulevard Vision Zero Corridor Study Technical Memorandum



SAFE STREETS NOW



Table of Contents

Introduction..... 1

Corridor Description..... 3

Crash Analysis..... 4

Upcoming Projects in the Area..... 11

 CIP project number 69679014..... 11

 CIP project number 69679024..... 11

 CIP project number 69638030..... 11

Corridorwide Recommendations..... 12

 Speed Management..... 12

 ADA Concerns..... 12

 Signing / Pavement Markings..... 12

 Roadway & Drainage..... 13

 Lighting..... 13

 Signalized Intersections..... 14

Good Ideas..... 14

 Red Light Running..... 14

Spot Recommendations..... 15

 SR-582 (E Fowler Avenue)..... 15

 North of SR-582 (E Fowler Avenue)..... 16

 USF Pine Drive / University Square Drive..... 16

 Campus Hill Drive..... 17

 North of Campus Hill Dr..... 18

 Northside Mental Health Center..... 18

 IQ Apartments Entrance..... 18

 Richard Silver Way..... 19

 E 131st Avenue / USF Holly Drive..... 19

 E 132nd Avenue / USF Banyan Circle..... 19

 Wells Fargo Bank Driveway..... 20

 CR-582A (E Fletcher Avenue)..... 20

 North of CR-582A (E Fletcher Avenue)..... 21

 Medical Park Drive / Mission BBQ..... 21

 E 138th Avenue / Azalea Circle..... 21

 E 138th Avenue / Azalea Circle to E Bearss Avenue..... 22

 Barnhard Drive to University Woods Place..... 22

 Grand Pavilion Drive..... 22

 South of E Bearss Avenue..... 23

 E Bearss Avenue..... 24



Planning Level Cost Estimates	25
Project Grand Total	25
Grand Total by Time Frame	25
Corridorwide Total by Category.....	25
Spot Total by Intersection	26
Corridorwide Total Cost per Recommendation	27
Spot Total Cost per Recommendation	28

Appendix A: Planning Level Estimate Detail Sheets



Introduction

In 2016, Hillsborough County, its three Cities, the Planning Commission and the School District all adopted resolutions supporting the long-range vision of achieving zero traffic deaths. Known as Vision Zero, this initiative spurred the Hillsborough Metropolitan Planning Organization (MPO) to collaborate with its partners to create the Vision Zero Action Plan, followed by the Speed Management Action Plan.

Since then, our communities have continued to work together and make great strides towards reducing traffic injuries and deaths. Safety enhancements have been funded or built on dozens of roadways. But there is much more to be done. We are still plagued with heartbreaking stories of lives lost, and our crash rates continue to be among the highest in the country.

As a commitment to Vision Zero, the Board of County Commissioners allocated \$500,000 to the MPO to study eight of the top 20 high-injury corridors under the County's jurisdiction. Working with the County Engineering and Operations Department, the MPO was tasked with analyzing crashes, and with consideration of funding challenges, recommending short-term, immediately implementable engineering countermeasures to reduce serious injuries and fatalities.

The MPO studied the following corridors, shared ideas, and considered input from the communities living and working in the areas around the roadways:

- 78th Street (Causeway Blvd to Palm River Rd)
- Gibsonton Drive (I-75 to Balm Riverview Road)
- 15th Street (Fowler Avenue to Fletcher Avenue)
- CR579 /Mango Rd (MLK Boulevard to US 92)
- Sheldon Road (Hillsborough Ave to Waters Ave)
- Lynn Turner (Gunn Highway to Ehrlich Road)
- W. Fletcher Ave (Armenia Ave to Nebraska Ave)
- Bruce B. Downs (Fowler Ave to Bears Ave)

The resulting recommendations will require further data, evaluation, and refinement prior to implementation, but represent a great start that, when coupled with the County's

proposed context classification, updated Comprehensive Plan and transportation technical manual (The Future will not Be Like the Past), will result in roadways designed for all users and vehicles traveling at safer speeds.

The eight reports focus on low-cost engineering countermeasures (Paint Saves Lives), These will go a long way towards causing drivers to slow down, provide additional and safer crosswalks, and in some cases give cyclists their own lane or side path.

To truly reach our vision of zero fatalities, these recommendations must be accompanied by education (One Message, Many Voices) and enforcement programs (Consistent and Fair). The MPO is working with the County's Communications Office to engage the public to emphasize that speeding will not get a driver to their destination much sooner and greatly increases the risk of a serious crash. Another key message is that walking and activating a nearby pedestrian crossing signal is the safest way to cross a busy road. And the MPO continues to coordinate with the Sheriff's Office to use crash data to target enforcement and to support technology like red-light-running cameras. These strategies have proven benefits in reducing crashes that result in life-altering injuries and death.

Close collaboration between transportation planning, engineering and law enforcement agencies is essential in turning the tide on serious injuries and fatalities on these most dangerous corridors. The MPO wishes to thank Hillsborough County for funding the Vision Zero Corridor Studies. We appreciate the County's continuing commitment and willingness to take these steps.

Corridor Description

CR-581 (Bruce B Downs Boulevard) from SR-582 (E Fowler Avenue) to E Bearss Avenue is approximately 1.77 miles in length and maintained by Hillsborough County. The corridor has six through lanes with a posted speed limit of 45 miles per hour (MPH). It is a high-volume roadway with an average traffic volume of 52,277 vehicles per day between SR-582 (E Fowler Avenue) and CR-582A (E Fletcher Avenue) and 42,851 vehicles per day between CR-582A (E Fletcher Avenue) and E Bearss Avenue. There are multiple Hillsborough Area Regional Transit (HART) routes along the corridor (HART routes 5, 9, 42, 275), and crossing the corridor (USF Bull Runner route D). The segment has two functional classifications: C3C – Suburban Commercial and C4 – Urban General. **Figure 1** illustrates the limits of the study segment.

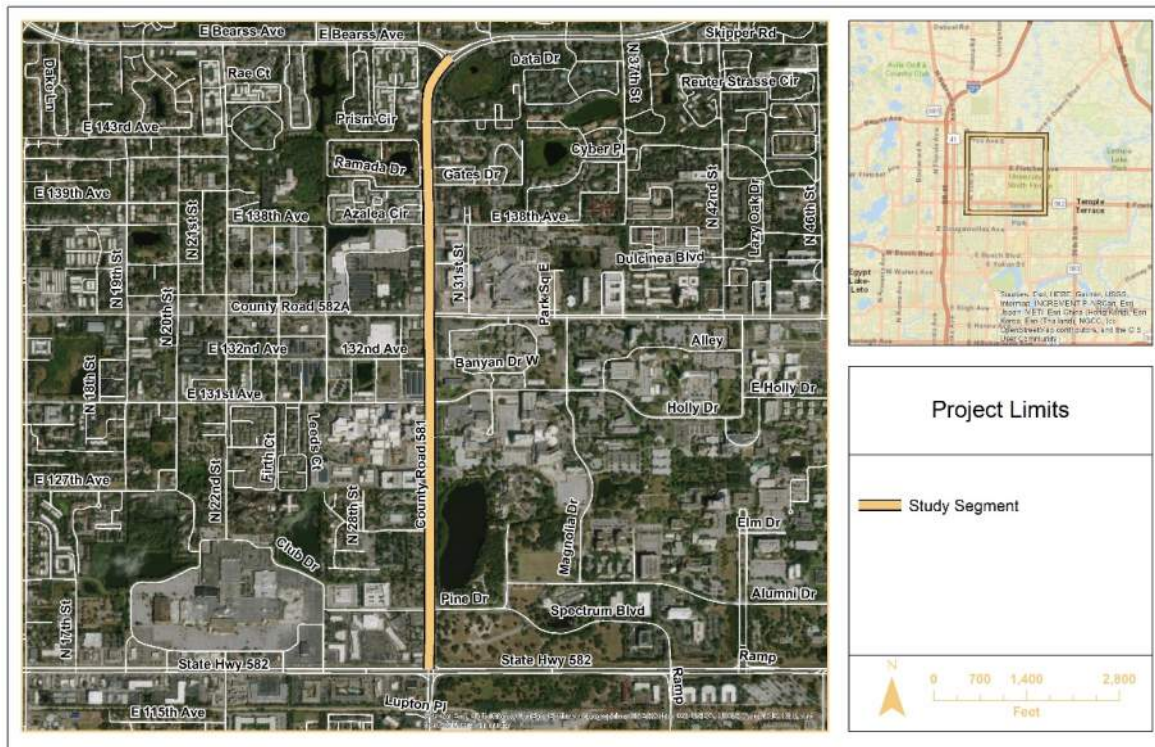


Figure 1: Project Limits Map

Crash Analysis

Crash data extracted from the State’s Crash Analysis Reporting System (CARS) ranging from January 2014 through December 2018 was evaluated. A total of 1,587 crashes were identified during the study period including six fatal and 22 incapacitating injury crashes. Additionally, there were 21 pedestrian and 23 bicycle related crashes identified within the study limits.

Table 1 lists the annual distribution of crashes along the study segment by their injury severity.

Table 1: Crash Chart by Injury Severity

Highest Injury	2014	2015	2016	2017	2018	Five Year Total	Percent of Total
Fatal	0	3	1	0	2	6	0.4%
Incapacitating	3	6	5	3	5	22	1.4%
Non-incapacitating	22	25	20	18	19	104	6.6%
Possible	65	71	81	74	66	357	22.5%
No Reported Injuries	160	206	199	232	301	1,098	69.2%
Total	250	311	306	327	393	1,587	100.0%

Figure 2 illustrates the location of crashes by their injury along the study segment, note that signalized intersections are labeled in green text. The high crash locations are SR-582 (E Fowler Avenue) and CR-582A (E Fletcher Avenue).

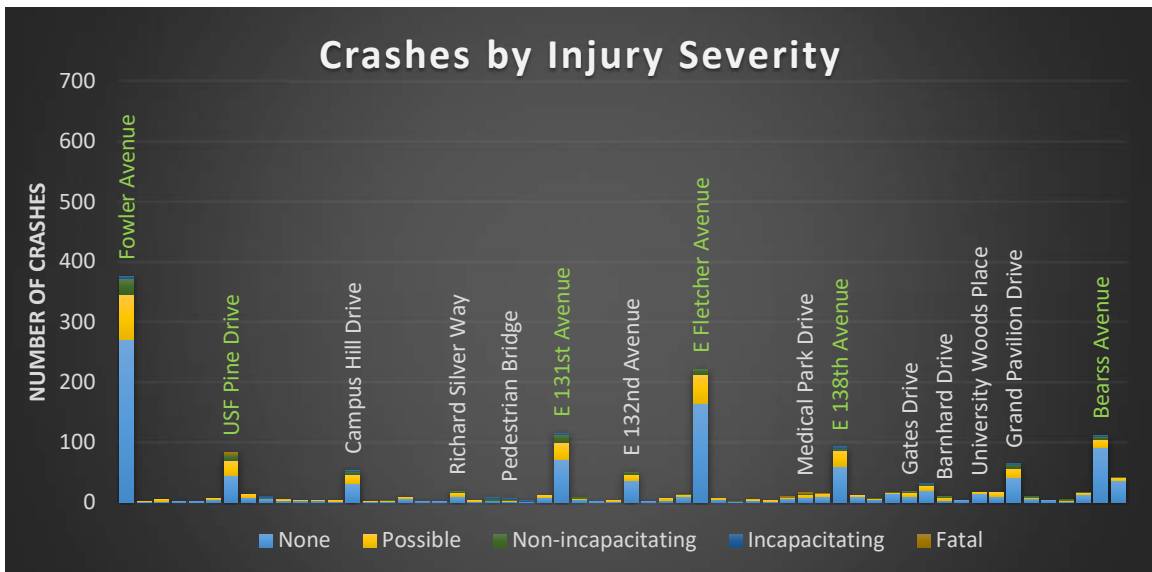


Figure 2: Crashes by Injury Severity Along the Study Segment

Figure 3 illustrates the location of fatal and severe injury crashes along the study segment. Fatal and severe injury crashes are concentrated at E 131st Avenue / USF Holly Drive and USF Pine Drive / University Square Drive.

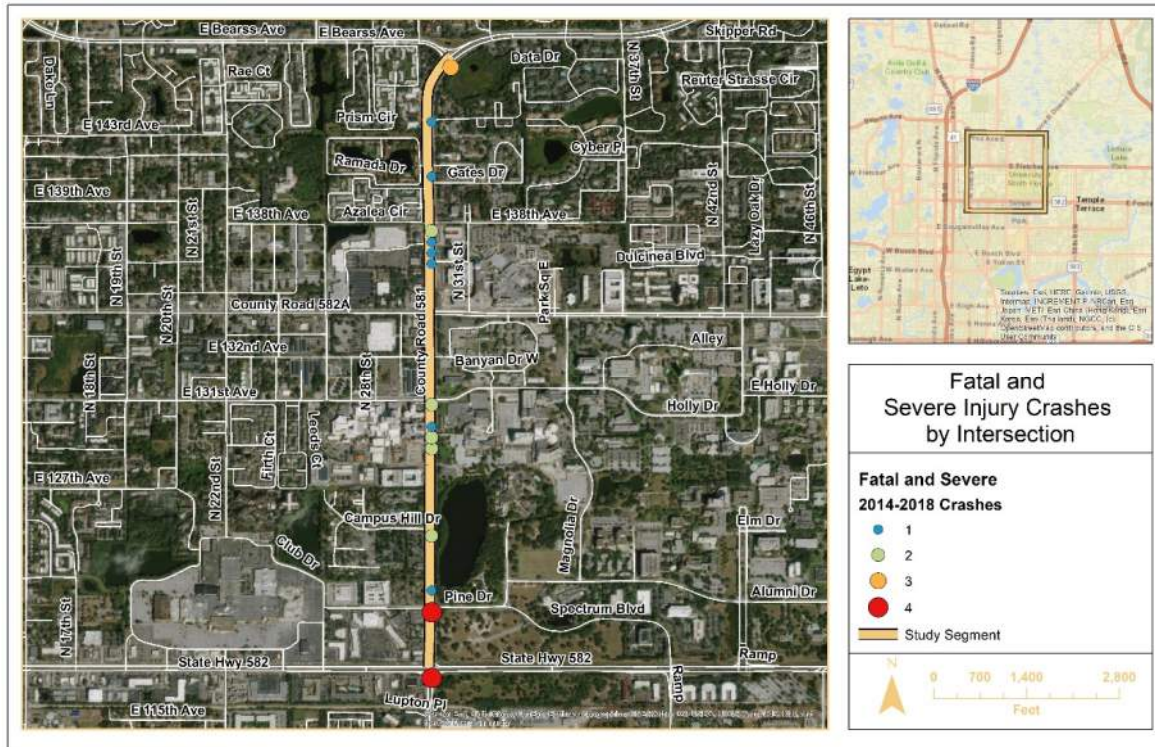


Figure 3: Fatal and Severe Injury Crashes by Intersection Map

While the overall crashes along the corridor have been steadily increasing the number of fatal and incapacitating injury crashes have been fairly steady with an average of six fatal and incapacitating injury crashes per year. **Figure 4** illustrates the annual distribution of fatal and severe injury crashes.

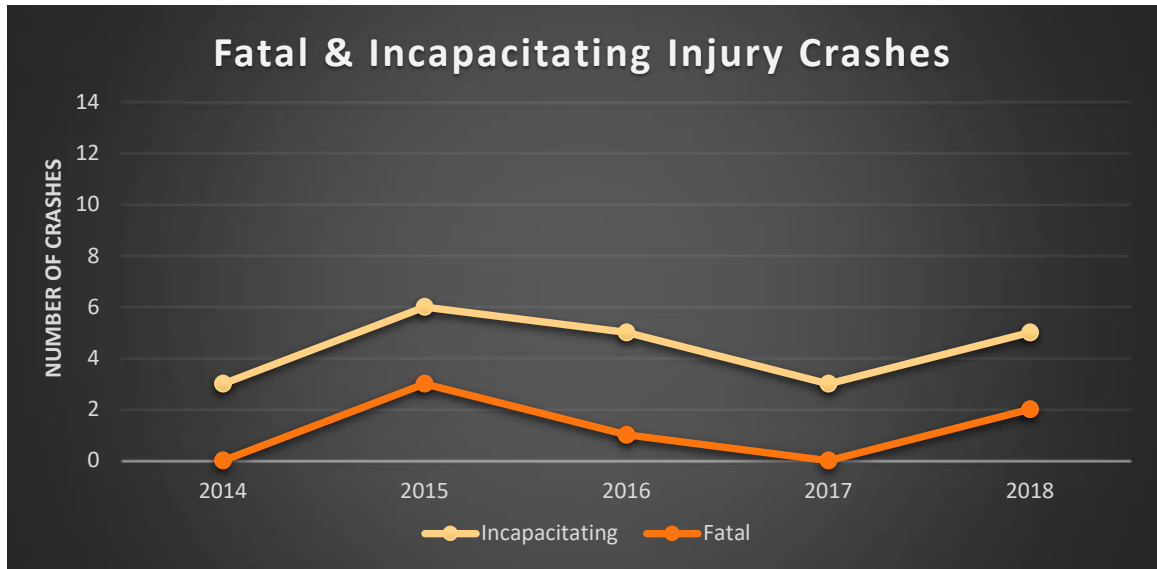


Figure 4: Fatal & Incapacitating Injury Crashes

Nighttime (non-daylight) crashes account for 25.6 percent of the reviewed crashes, this is 5.4 percent below the statewide average of 31 percent. **Figure 5** illustrates the percentage distribution of reported lighting condition for each crash.

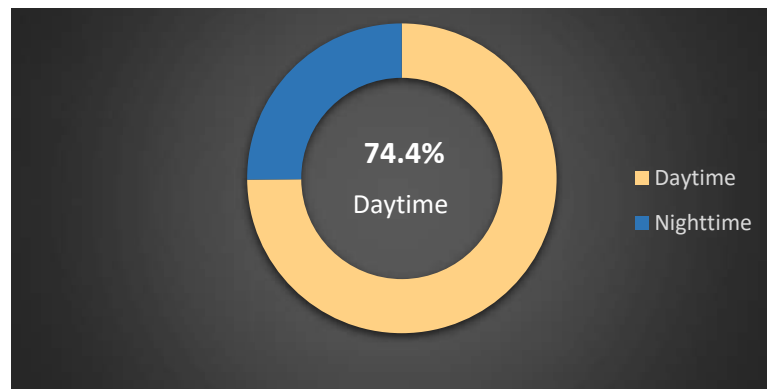


Figure 5: Lighting Distribution

The following tables and figures illustrate the crash data attributes along the study segment. **Table 2** lists the crash type distribution along the study segment. Rear-end and sideswipe crashes are the predominant crash type accounting for 72.5 percent of the crashes along the study segment. Angle and left-turn crashes account for 16.9 percent of the reviewed crashes.

A detailed review of the 11 crashes coded as “head-on” identified a single “wrong way” driving crash at the SR-582 (E Fowler Avenue) intersection in December 2017. The remaining crashes involved loss of control/cross-over at a signal (three crashes), opposing left-turns at a median opening/minor street (two crashes), medical emergencies (two crashes), rear-ends (one crash), lost control/making a wide-turn (one crash), and one undefined crash.

Table 2: Crash Type Distribution

Crash Type	2014	2015	2016	2017	2018	Five Year Total	Percent of Total
Rear End	167	185	174	194	232	952	60.0%
Sideswipe	22	32	36	45	64	199	12.5%
Angle	20	32	29	36	39	156	9.8%
Left Turn	15	28	31	17	22	113	7.1%
Right Turn	5	8	6	13	6	38	2.4%
Hit Fixed Object	8	5	5	2	8	28	1.8%
U-Turn	1	4	6	6	5	22	1.4%
Pedestrian	3	5	8	2	3	21	1.3%
Bike	2	5	4	5	7	23	1.4%
Single Vehicle	2	2	1	2	3	10	0.6%
Unknown	2	4	3	2	1	12	0.8%
Head On	2	1	3	3	2	11	0.7%
Hit Non-fixed Object	0	0	0	0	1	1	0.1%
Run Off Road	1	0	0	0	0	1	0.1%
Total	250	311	306	327	393	1,587	100.0%

Figure 6 illustrates the location of pedestrian and bicycle crashes along the study segment, note that signalized intersections are labeled in green text. The high pedestrian and bicycle crash locations are SR-582 (E Fowler Avenue), CR-582A (E Fletcher Avenue), and E 138th Avenue / Azalea Circle.

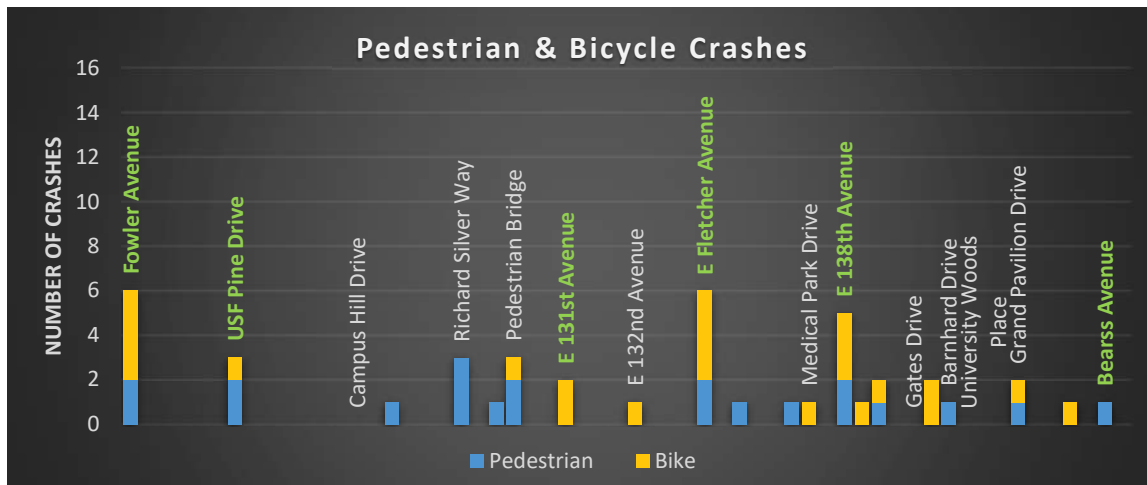


Figure 6: Pedestrian & Bicycle Crashes Along the Study Segment

Figure 7 illustrates the annual distribution of pedestrian and bicycle related crashes. Both bicycle and pedestrian related crashes have a slight increasing crash trend year over year averaging 4.4 crashes per year.

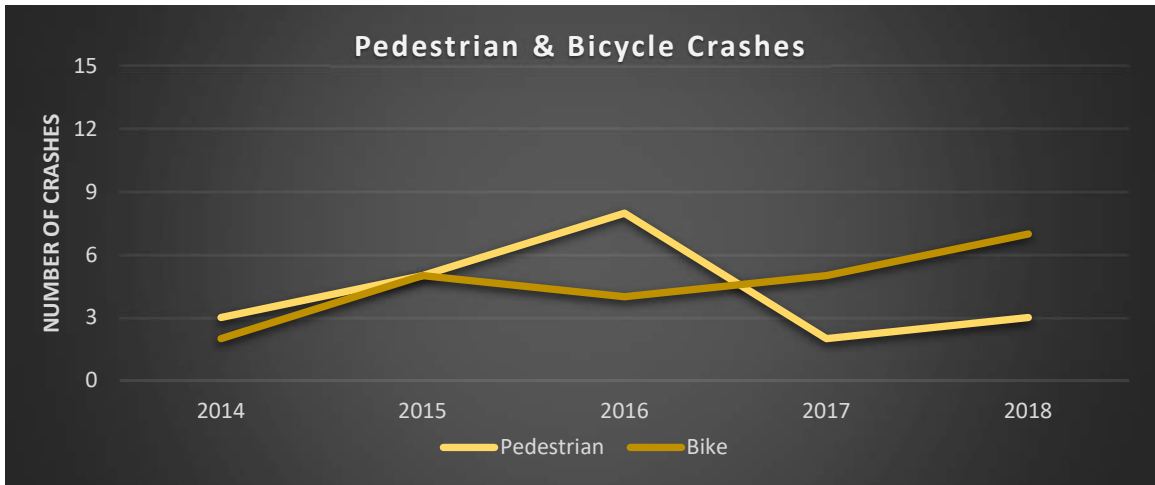


Figure 7: Annual Distribution of Pedestrian & Bicycle Crashes

Figure 8 illustrates the percentage injury severity distribution of reviewed bicycle and pedestrian injury crashes. Although bicycle and pedestrian crashes account for 2.8 percent of the overall crashes, they account for 28.6 percent of all fatal and incapacitating injury crashes. Overall 96.4 percent of bicycle and pedestrian crashes result in a fatality, injury, or possible injury.

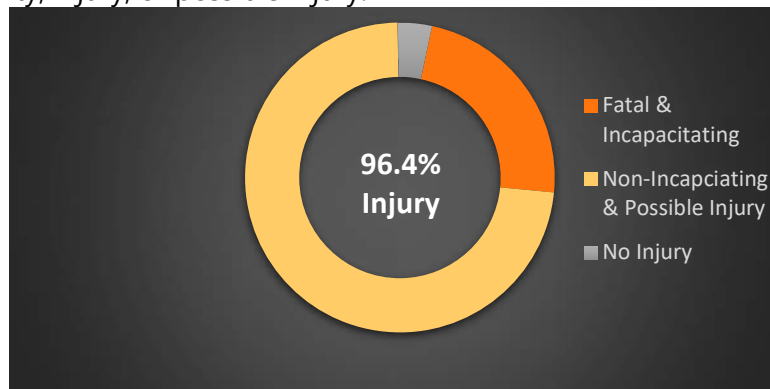


Figure 8: Pedestrian and Bicycle Crash Injury Severity Distribution

Figure 9 illustrates the location of rear-end crashes along the study segment, note that signalized intersections are labeled in green text. Rear-end crashes are concentrated at the signalized intersections. The high rear-end crash location is SR-582 (E Fowler Avenue).

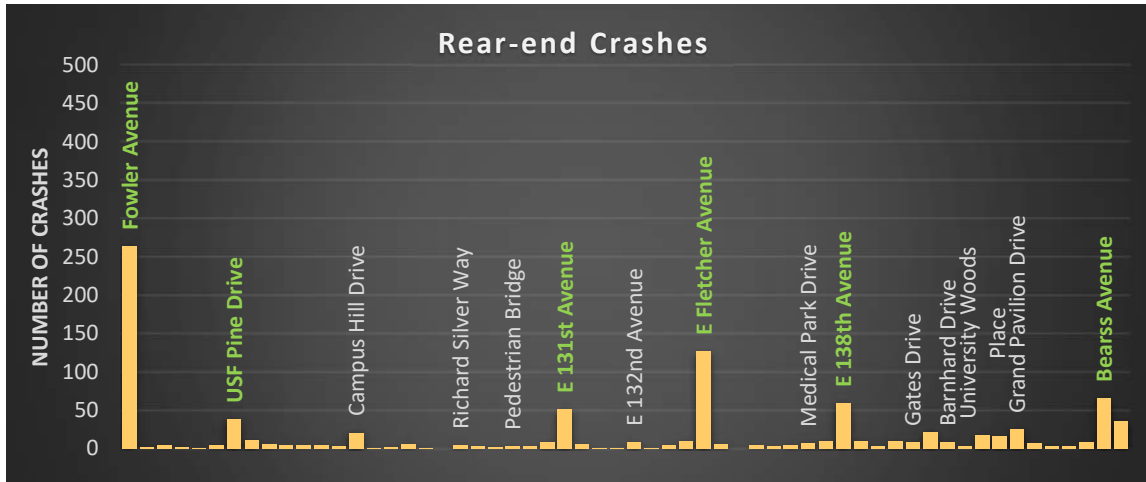


Figure 9: Rear-end Crashes Along the Study Segment

Figure 10 illustrates the location of sideswipe crashes along the study segment, note that signalized intersections are labeled in green text. Sideswipe crashes are concentrated at the signalized intersections.

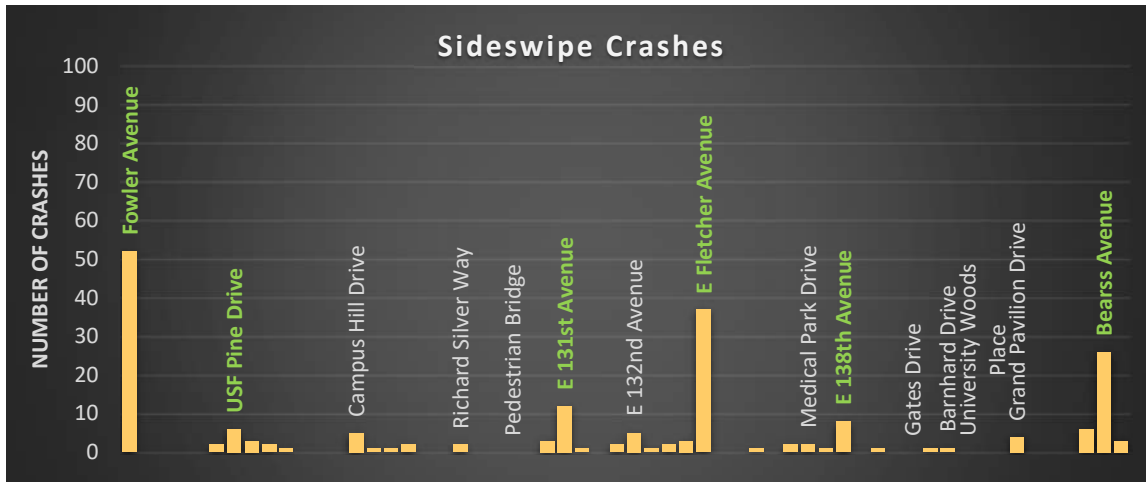


Figure 10: Sideswipe Crashes Along the Study Segment

Figure 11 illustrates the location of angle crashes along the study segment, note that signalized intersections are labeled in green text. Although angle crashes predominantly occurred at signalized intersections, there are unsignalized intersections along the study segment that experience as many angle crashes as their signalized counterparts. Unsignalized intersections with high numbers of angle crashes include Campus Hill Drive, E 132nd Avenue / USF Banyan Circle, and Grand Pavilion Drive.

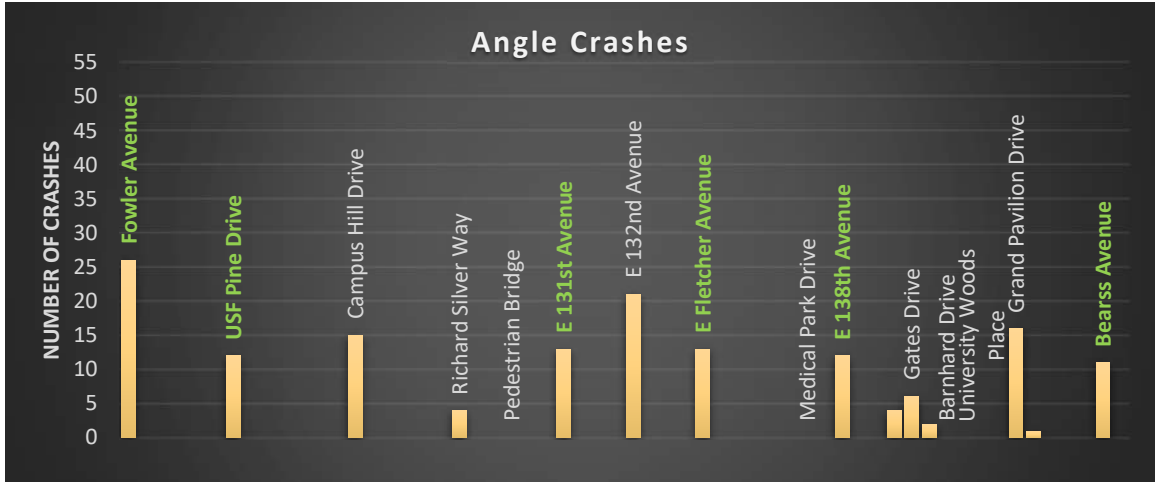


Figure 11: Angle Crashes Along the Study Segment

Figure 12 illustrates the location of left-turn crashes along the study segment, note that signalized intersections are labeled in green text. The high left-turn crash location is E 131st Avenue / USF Holly Drive. Unsignalized intersections with high numbers of left-turn crashes include E 132nd Avenue / USF Banyan Circle and Grand Pavilion Drive.

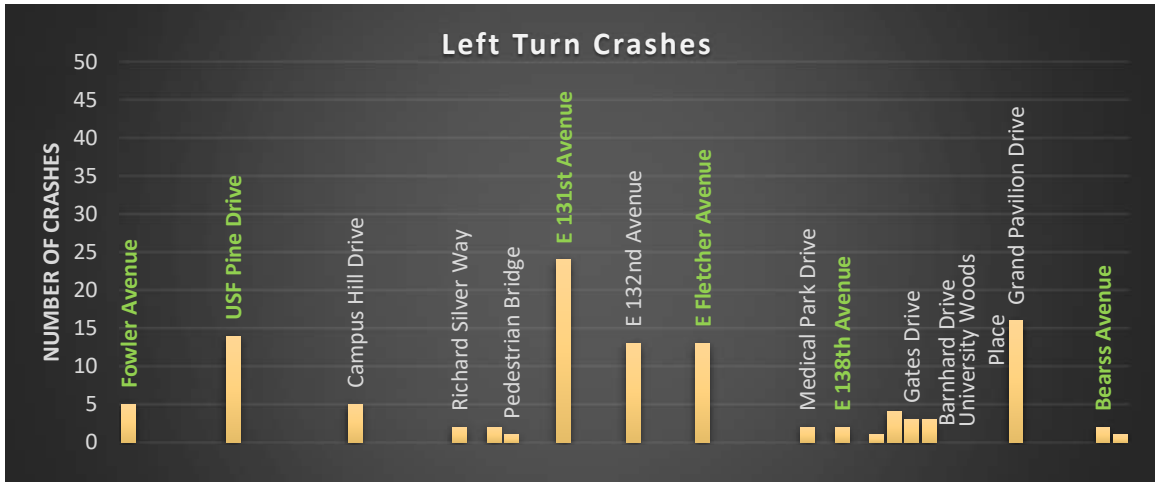


Figure 12: Left-turn Crashes Along the Study Segment

Upcoming Projects in the Area

**CIP project
number
69679014**

- CR-581 (Bruce B Downs Boulevard) at Campus Hill Drive will be improved under Hillsborough County Capital Improvement Plan (CIP) project number 69679014.

This project includes construction of a traffic signal and pedestrian crossings across all three legs of the intersection.

**CIP project
number
69679024**

- CR-581 (Bruce B Downs Boulevard) at Richard Silver Way will be improved under Hillsborough County CIP project number 69679024.

This project includes construction of a traffic signal and pedestrian crossings across all four legs of the intersection.

**CIP project
number
69638030**

- CR-581 (Bruce B Downs Boulevard) from USF Pine Drive / University Square Drive to E 131st Street / USF Holly Drive will be improved under Hillsborough County CIP project number 69638030.

This project includes resurfacing along the entire segment, the construction of a new 10-foot wide sidewalk along the east side of CR-581 (Bruce B Downs Boulevard), and widening the existing sidewalk on the west side of CR-581 (Bruce B Downs Boulevard) to eight feet. As a part of the resurfacing this segment of CR-581 (Bruce B Downs Boulevard) will be restriped to include 11-foot travel lanes and a seven foot physically buffered bike lane along both sides of the roadway.

It is the intent of Hillsborough County to combine the three projects above into one project for construction. The County is currently in the process of finalizing the design of the three projects and is preparing bid packages. It is anticipated that this project will be ready for bid in the next few months.

Hillsborough County is in the process of updating the Transportation Technical Manual (TTM) and as a part of this update context sensitive typical sections are being developed. Future design efforts should follow the updated guidance when available.

Corridorwide Recommendations

Speed Management

Short-term Recommendations

- Identify a target speed of 35 MPH on CR-581 (Bruce B Downs Boulevard) from SR-582 (E Fowler Avenue) to CR-582A (E Fletcher Avenue)
 - Maximize pedestrian access
 - Add physically buffered bicycle lanes
 - Reduce vehicular travel lanes to 11 feet
- Identify a target speed of 40 MPH on CR-581 (Bruce B Downs Boulevard) from SR-582A (E Fletcher Avenue) to Bearss Avenue
 - Channelize pedestrians to protected crossings
 - Add a shared use path on the east side of CR-581 (Bruce B Downs Boulevard)
 - Reduce vehicular travel lanes to 11 feet

ADA Concerns

Short-term Recommendations Outside of the Upcoming Projects

- Add detectable warnings on minor streets and major driveways
- Replace worn / missing detectable warnings

Signing / Pavement Markings

Short-term Recommendations Outside of the Upcoming Projects

- Upgrade all R10-15 signs to R10-15 MOD "Turning Vehicles Stop for Pedestrians" signs and add them where they are not currently in place
- Add high emphasis crosswalk markings to all intersection approaches consistent with markings along upcoming projects
- Provide green pavement markings in bicycle lane conflict areas south of CR-582A (E Fletcher Avenue) to be consistent with markings included in upcoming projects on CR-581 (Bruce B Downs Boulevard) south of E 131st Street / USF Holly Drive
- Use sign-post reflectors on the speed limit signs to increase their visibility
- Install stop lines on minor street approaches and driveways

Corridorwide Recommendations

Roadway & Drainage

Short-term Recommendations Outside of the Upcoming Projects

- Evaluate ponding in the pedestrian and bicycle space, especially north of CR-582A (E Fletcher Avenue)
- Consider modifying unsignalized median openings along the corridor based on crash history

Mid-term Recommendations Outside of the Upcoming Projects

- Provide positive offset for left-turn lanes at permissive left-turn locations

Long-term Recommendations Outside of the Upcoming Projects

- Plan future project on CR-581 (Bruce B Downs Boulevard) between SR-582 (E Fowler Avenue) and USF Pine Drive / University Square Drive and between E 131st Avenue / USF Holly Drive to CR-582A (E Fletcher Avenue) to match the cross section of the existing project (Hillsborough County CIP project number 69638030). This new cross section would include eleven-foot travel lanes and a combination of physically buffered and striping buffered seven-foot bicycle lanes.
- Plan a future project on CR-581 (Bruce B Downs Boulevard) between CR-582A (E Fletcher Avenue) and E Bearss Avenue to remove the on-street bicycle lanes, construct a 10-foot shared use path to accommodate pedestrians and bicyclists on the east side of the roadway, reduce travel lane widths to 11 feet and add curb and gutter. The new roadway cross-section would generally match the existing cross-section north of E Bearss Avenue.

Lighting

Short-term

- Continue current effort to add light emitting diode (LED) luminaires to any available existing utility poles.

Long-term

- Evaluate potential to upgrade corridor and intersection lighting to meet current standards including appropriate illumination of the sidewalk area

Corridorwide Recommendations

Signalized Intersections

Short-term

- Add flexible yellow retroreflective backplates to all signal heads where they do not exist; signalized intersections where retroreflective backplates are needed include:
E 131st Avenue / USF Holly Drive, CR-582A (E Fletcher Avenue), and E 138th Avenue / Azalea Circle.
- Evaluate feasibility of time of day protected only left turns using flashing yellow arrow (FYA) at USF Pine Drive / University Square Drive, E 131st Avenue / USF Holly Drive, the future Campus Hill Drive signal, the future Richard Silver Way signal, and E 138th Avenue / Azalea Circle.
- Evaluate feasibility of implementing leading pedestrian intervals (LPI) at all signalized intersections
- Evaluate feasibility of pedestrian pushbutton actuated right turn on red restrictions with blank-out signs at all signalized intersections
- Consider implementing signal coordination on desired travel speed



Good Ideas

Red Light Running

- Effective and affordable safety tool
- Consistent and fair enforcement
- Reduces speeding and serious injury crashes
- Raises funds for good causes

Spot Recommendations



SR-582 (E Fowler Avenue) FDOT Maintained Intersection

Short-term

- Refurbish crosswalk pavement markings
- Ensure crosswalk lines are parallel with vehicle tires
- Remove debris from pedestrian islands as there is an accumulation of pebbles especially at the pedestrian island in the northeast corner and prioritize as a continuing maintenance item after initial clean
- Evaluate the geometry of the right turning movements where there is evidence of vehicle off-tracking

Mid-term

- Consider implementing the Department's recommendations in the Fowler Avenue Multimodal Study to reconstruct the channelized right turn lanes to improve visibility, reduce turning speed and utilize truck aprons to change the feel of the movement
- Coordinate with the County Utility Coordinator to evaluate potential relocation of sight obstructions on the northwest quadrant that impede the line of sight of right-turning vehicles.

Spot Recommendations



North of SR-582 (E Fowler Avenue)

Short-term

- Coordinate with County Utility Coordinator to evaluate whether obstructions can be mounted on the opposite side of the pole to avoid interference with the clear sidewalk width



USF Pine Drive / University Square Drive

Short-term

- Install “turning vehicles stop for pedestrians” signs on each approach
- Evaluate feasibility of pedestrian pushbutton actuated right turn on red restrictions with blank-out signs



Mid-Term

- Evaluate drainage to correct the observed silt collecting in drainage features
- Mitigate observed sidewalk cracking at USF Pine Drive / University Square Drive to provide a uniform walking path

Spot Recommendations



USF Pine Drive / University Square Drive

Long-term

- Provide wider approach to pedestrian ramp on the northwest corner to eliminate existing pinch point that may force users into the roadway



Campus Hill Drive

New Signal Project

Planned Improvements

- New traffic signal and pedestrian features. This signal will provide a protected pedestrian crossing to access the transit stop on the east side of the corridor.
- New 10-foot sidewalk on east side of CR-581 (Bruce B Downs Boulevard)
- Reconstruction of existing sidewalk to eight-foot width on west side of CR-581 (Bruce B Downs Boulevard)

Additional Long-term Recommendation

- Consider modifying the connection to reduce the turning radii and include only one inbound lane to shorten the pedestrian crossing length. The second inbound lane merges just west of the intersection.



Spot Recommendations



North of Campus Hill Dr *Within Sidewalk Project*

Planned Improvements

- New 10-foot sidewalk on east side of CR-581 (Bruce B Downs Boulevard)
- Reconstruction of existing sidewalk to eight-foot width on west side of CR-581 (Bruce B Downs Boulevard). Ensure that existing sidewalk edge drop-off is corrected in the project.



Northside Mental Health Center *Within Sidewalk Project*

Planned Improvements

- New 10-foot sidewalk on east side of CR-581 (Bruce B Downs Boulevard)
- Reconstruction of existing sidewalk to eight-foot width on west side of CR-581 (Bruce B Downs Boulevard)
- Replace missing stop sign on the eastbound approach to CR-581 (Bruce B Downs Boulevard)



Additional Mid-term Recommendation

- Consider creating median refuge area to allow for a two-stage pedestrian crossing by extending the median nose further east



IQ Apartments Entrance *Within Sidewalk Project*

Planned Improvements

- New 10-foot sidewalk on east side of CR-581 (Bruce B Downs Boulevard)
- Reconstruction of existing sidewalk to eight-foot width on west side of CR-581 (Bruce B Downs Boulevard)

Spot Recommendations



Richard Silver Way *New Signal Project*

Planned Improvements

- New traffic signal and pedestrian features
- New 10-foot sidewalk on east side of CR-581 (Bruce B Downs Boulevard)
- Reconstruction of existing sidewalk to eight-foot width on west side of CR-581 (Bruce B Downs Boulevard)



E 131st Avenue / USF Holly Drive *Within Sidewalk Project*

Planned Improvements

- New 10-foot sidewalk on east side of CR-581 (Bruce B Downs Boulevard) that terminates at E 131st Avenue / USF Holly Drive

Additional Long-term Recommendations

- Improve E 131st Avenue west of Bruce B Downs Boulevard to incorporate the recommended typical section from the E 131st Avenue PLAT Study which includes 10-foot wide sidewalks, five-foot bike lanes, and 11-foot travel lanes



E 132nd Avenue / USF Banyan Circle

Short-term

- Evaluate mitigation strategies to prevent silt buildup from water draining across the sidewalk

Spot Recommendations



Wells Fargo Bank Driveway

Short-term

- Provide detectable warning surface pads

Long-term

- As part of the overall typical section modifications, provide wider sidewalk and reconstruct the driveway apron



CR-582A (E Fletcher Avenue)

Short-term

- Refurbish worn crosswalk markings
- Install detectable warnings on northeast and southeast corners
- Install separate pedestrian pushbuttons and the required flat-landing areas for Americans with Disabilities Act (ADA) compliance
- Install flexible backplates on signal heads

Mid-term

- Bulb-out intersection on southwest corner to reduce crossing distance and to formalize the southbound right-turn lane into the convenience store
- Develop a project to mitigate and upgrade general ADA, pushbutton, and pedestrian issues observed at the intersection



Spot Recommendations



North of CR-582A (E Fletcher Avenue)

Short-term

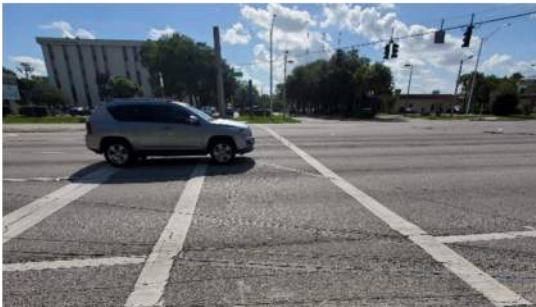
- Provide post mounted signs along the median directing pedestrians to cross at the signalized intersection and consider use of sidewalk pavement markings to direct users to controlled crossing locations.



Medical Park Drive / Mission BBQ

Short-term

- Trim vegetation encroaching on the sidewalk
- Pave a one-foot bulb out on the opposite side of the sidewalk from the utility pole to provide a wider usable sidewalk



E 138th Avenue / Azalea Circle

Short-term

- Upgrade standard crosswalk markings to special emphasis markings

Mid-term

- Provide crosswalk and pedestrian features on the south leg of the intersection
- Mitigate identified drainage issues on the southwest corner



Spot Recommendations



E 138th Avenue / Azalea Circle to E Bearss Avenue

Long-term

- Section of sidewalk offset from travel lanes offers buffer for users from traffic; this is a trade-off that offers less visibility of bicyclists and pedestrians for drivers leaving businesses especially with landscaping. Evaluate opportunities to shift the sidewalk closer to the travel lanes at the crossing locations.



Barnhard Drive to University Woods Place

Long-term

- Pending the results of the ongoing midblock crossing evaluation, schedule a project construct a protected pedestrian crossing near the two existing bus stops



Grand Pavilion Drive

Mid-term

- Evaluate strategies to mitigate observed water ponding at the curb ramp

Spot Recommendations



South of E Bearss Avenue

Short-term

- Repair uneven sidewalk on the west side of CR-581 (Bruce B Downs Boulevard) to provide a uniform walking surface
- Provide handrail at drainage inlet drop-off location on the west side of CR-581 (Bruce B Downs Boulevard). Note that the Google Street View indicates that the inlet had a handrail prior to the field review.

Spot Recommendations



E Bearss Avenue

Short-term

- Repair the pushbutton in northwest corner
- Due to the speed of the eastbound and southbound right-turns, consider installing push-button actuated pedestrian crossing ahead warning signs with flashing beacons at or in advance of the crosswalk
- Provide connection from the sidewalk to the pedestrian crossing in the northwest corner of the intersection

Long-term

- Consider modifying the geometry of the eastbound and southbound right turn movements to reduce the turning speed, improve the visibility of the yield movement and to reduce the number of "weaves" at this point

Planning Level Cost Estimates

Unit prices are per FDOT Item Statewide Average from October 2019 to September 2020. List of items not included in the Total Estimated Cost: Landscaping, Utilities, R/W Costs, and Permits. The professional opinions as to costs reflected herein, including but not limited to professional opinions as to the costs of construction materials, are made on the basis of professional experience and available data.

All summary level costs include 10 percent mobility, 10 percent maintenance of traffic, 20 percent project unknowns, 20 percent design, and 15 percent construction engineering and inspection.

Project Grand Total

<i>Project Grand Total</i>	\$15,402,553
----------------------------	---------------------

Grand Total by Time Frame

Recommendation Time Frame	Project Total
Short-term	\$1,692,272
Mid-term	\$2,472,851
Long-term	\$11,237,430
<i>Project Grand Total</i>	\$15,402,553

Corridorwide Total by Category

Corridorwide Recommendation Category	Category Sub Total
Speed Management	\$0
ADA Concerns (Outside of the Upcoming Projects)	\$72,135
Signing / Pavement Markings (Outside of the Upcoming Projects)	\$240,638
Roadway & Drainage (Outside of the Upcoming Projects)	\$ 11,423,189
Lighting	\$0
Signalized Intersections	\$389,381
<i>Sub Total</i>	\$12,125,343

Spot Total by Intersection

Spot Recommendation Intersection Name	Intersection Sub Total
SR-582 (E Fowler Avenue) (FDOT Maintained Intersection)	\$456,745
North of SR-582 (E Fowler Avenue)	\$0
USF Pine Drive / University Square Drive	\$274,525
Campus Hill Drive (New Signal Project)	\$32,511
North of Campus Hill Dr (Within Sidewalk Project)	\$0
Northside Mental Health Center (Within Sidewalk Project)	\$26,915
IQ Apartments Entrance (Within Sidewalk Project)	\$0
Richard Silver Way (New Signal Project)	\$0
E 131 st Avenue / USF Holly Drive (Within Sidewalk Project)	\$0
E 132 nd Avenue / USF Banyan Circle	\$40,540
Wells Fargo Bank Driveway	\$51,041
CR-582A (E Fletcher Avenue)	\$396,565
North of CR-582A (E Fletcher Avenue)	\$5,570
Medical Park Drive / Mission BBQ	\$1,613
E 138 th Avenue / Azalea Circle	\$239,145
E 138 th Avenue / Azalea Circle to E Bearss Avenue	\$499,199
Barnhard Drive to University Woods Place	\$623,601
Grand Pavilion Drive	\$74,517
South of E Bearss Avenue	\$3,507
E Bearss Avenue	\$551,216
Sub Total	\$ 3,277,210

Corridorwide Total Cost per Recommendation

Category	Time Frame	Corridorwide Recommendation	Unit Total	MOB (10%)	MOT (10%)	UNK (20%)	Construction Total	Design (20%)	CEI (15%)	Rec Sub Total	Time Frame Sub Total	Component Total
Speed Management	Short-term	Identify a target speed of 35 MPH on CR-581 (Bruce B Downs Boulevard) from SR-582 (E Fowler Avenue) to CR-582A (E Fletcher Avenue)									\$ 0	\$ 0
		▪ Maximize pedestrian access	\$0	\$0	\$0	\$0	\$0	\$0	\$0	\$0		
		▪ Add physically buffered bicycle lanes	\$0	\$0	\$0	\$0	\$0	\$0	\$0	\$0		
		▪ Reduce vehicular travel lanes to 11 feet	\$0	\$0	\$0	\$0	\$0	\$0	\$0	\$0		
		Identify a target speed of 40 MPH on CR-581 (Bruce B Downs Boulevard) from SR-582A (E Fletcher Avenue) to Bearss Avenue	\$0	\$0	\$0	\$0	\$0	\$0	\$0	\$0		
		▪ Channelize pedestrians to protected crossings	\$0	\$0	\$0	\$0	\$0	\$0	\$0	\$0		
▪ Add a shared use path on the east side of CR-581 (Bruce B Downs Boulevard)	\$0	\$0	\$0	\$0	\$0	\$0	\$0	\$0				
▪ Reduce vehicular travel lanes to 11 feet	\$0	\$0	\$0	\$0	\$0	\$0	\$0	\$0				
ADA Concerns (Outside of the Upcoming Projects)	Short-term	▪ Add detectable warnings on minor streets and major driveways	\$36,000	\$3,600	\$3,960	\$8,712	\$52,272	\$10,454	\$9,409	\$72,135	\$72,135	\$72,135
▪ Replace worn / missing detectable warnings	\$0	\$0	\$0	\$0	\$0	\$0	\$0	\$0	\$0			
Signing / Pavement Markings (Outside of the Upcoming Projects)	Short-term	▪ Upgrade all R10-15 signs to R10-15 MOD "Turning Vehicles Stop for Pedestrians" signs and add them where they are not currently in place	\$10,500	\$1,050	\$1,155	\$2,541	\$15,246	\$3,049	\$2,744	\$21,039	\$240,638	\$240,638
		▪ Add high emphasis crosswalk markings to all intersection approaches consistent with markings along upcoming projects	\$106,518	\$10,652	\$11,717	\$25,777	\$154,664	\$30,933	\$27,840	\$213,437		
		▪ Provide green pavement markings in bicycle lane conflict areas south of CR-582A (E Fletcher Avenue) to be consistent with markings included in upcoming projects on CR-581 (Bruce B Downs Boulevard) south of E 131 st Street / USF Holly Drive	\$0	\$0	\$0	\$0	\$0	\$0	\$0	\$0		
		▪ Use sign-post reflectors on the speed limit signs to increase their visibility	\$375	\$38	\$41	\$91	\$545	\$109	\$98	\$751		
		▪ Install stop lines on minor street approaches and driveways	\$2,700	\$270	\$297	\$653	\$3,920	\$784	\$706	\$5,410		
Roadway & Drainage (Outside of the Upcoming Projects)	Short-term	▪ Evaluate ponding in the pedestrian and bicycle space, especially north of CR-582A (E Fletcher Avenue)	\$0	\$0	\$0	\$0	\$0	\$0	\$0	\$0	\$243,293	\$11,423,189
		▪ Consider modifying unsignalized median openings along the corridor based on crash history	\$121,418	\$12,142	\$13,356	\$29,383	\$176,299	\$35,260	\$31,734	\$243,293		
	Mid-term	▪ Provide positive offset for left-turn lanes at permissive left-turn locations	\$691,591	\$69,159	\$76,075	\$167,365	\$1,004,189	\$200,838	\$180,754	\$1,385,781	\$1,385,781	
	Long-term	Plan future project on CR-581 (Bruce B Downs Boulevard) between SR-582 (E Fowler Avenue) and USF Pine Drive / University Square Drive to match the cross section of the existing project (Hillsborough County CIP project number 69638030).									\$9,794,115	
		▪ Reduce travel lane widths to 11 feet	\$889,212	\$88,921	\$97,813	\$215,189	\$1,291,136	\$258,227	\$232,405	\$1,781,768		
		▪ Construct a combination of physically buffered and striping buffered seven-foot bicycle lanes	\$33,340	\$3,334	\$3,667	\$8,068	\$48,410	\$9,682	\$8,714	\$66,805		
		Plan future project on CR-581 (Bruce B Downs Boulevard) between E 131 st Avenue / USF Holly Drive to CR-582A (E Fletcher Avenue) to match the cross section of the existing project (Hillsborough County CIP project number 69638030). This new cross section would include eleven-foot travel lanes and a combination of physically buffered and striping buffered seven-foot bicycle lanes.										
		▪ Reduce travel lane widths to 11 feet	\$1,426,493	\$142,649	\$156,914	\$345,211	\$2,071,268	\$414,254	\$372,828	\$2,858,350		
		▪ Construct a combination of physically buffered and striping buffered seven-foot bicycle lanes	\$66,580	\$6,658	\$7,324	\$16,112	\$96,674	\$19,335	\$17,401	\$133,410		
	Plan a future project on CR-581 (Bruce B Downs Boulevard) between CR-582A (E Fletcher Avenue) and E Bearss Avenue. The new roadway cross-section would generally match the existing cross-section north of E Bearss Avenue.											
	▪ Construct a 10-foot shared use path to accommodate pedestrians and bicyclists on the east side of the roadway	\$681,126	\$68,113	\$74,924	\$164,832	\$988,994	\$197,799	\$178,019	\$1,364,812			
▪ Remove the on-street bicycle lanes and reduce travel lane widths to 11 feet	\$1,237,998	\$123,800	\$136,180	\$299,595	\$1,797,572	\$359,514	\$323,563	\$2,480,650				
▪ Add curb and gutter	\$553,120	\$55,312	\$60,843	\$133,855	\$803,130	\$160,626	\$144,563	\$1,108,320				
Lighting	Short-term	▪ Continue current effort to add light emitting diode (LED) luminaires to any available existing utility poles.	\$0	\$0	\$0	\$0	\$0	\$0	\$0	\$0	\$0	\$0
	Long-term	▪ Evaluate potential to upgrade corridor and intersection lighting to meet current standards including appropriate illumination of the sidewalk area	\$0	\$0	\$0	\$0	\$0	\$0	\$0	\$0	\$0	
Signalized Intersections	Short-term	▪ Add flexible yellow retroreflective backplates to all signal heads where they do not exist; signalized intersections where retroreflective backplates are needed include: E 131 st Avenue / USF Holly Drive, CR-582A (E Fletcher Avenue), and E 138 th Avenue / Azalea Circle, and E 138 th Avenue / Azalea Circle	\$14,175	\$1,418	\$1,559	\$3,430	\$20,582	\$4,116	\$3,705	\$28,403	\$389,381	\$389,381
		▪ Evaluate feasibility of time of day protected only left turns using flashing yellow arrow (FYA) at: USF Pine Drive / University Square Drive, E 131 st Avenue / USF Holly Drive, the future Campus Hill Drive signal, the future Richard Silver Way signal, and E 138 th Avenue / Azalea Circle.	\$0	\$0	\$0	\$0	\$0	\$0	\$0	\$0		
		▪ Evaluate feasibility of implementing leading pedestrian intervals (LPI) at all signalized intersections	\$0	\$0	\$0	\$0	\$0	\$0	\$0	\$0		
		▪ Evaluate feasibility of pedestrian pushbutton actuated right turn on red restrictions with blank-out signs at all signalized intersections	\$180,150	\$18,015	\$19,817	\$43,596	\$261,578	\$52,316	\$47,084	\$360,977		
		▪ Consider implementing signal coordination on desired travel speed	\$0	\$0	\$0	\$0	\$0	\$0	\$0	\$0		
Total			\$6,051,295	\$605,129	\$665,642	\$1,464,413	\$8,786,480	\$1,757,296	\$1,581,566	\$12,125,343	\$12,125,343	\$12,125,343

Spot Total Cost per Recommendation

Intersection Name	Time Frame	Spot Recommendation	Unit Total	MOB (10%)	MOT (10%)	Unknown (20%)	Component Total	Design (20%)	CEI (15%)	Rec Sub Total	Time Frame Sub Total	Spot Total		
SR-582 (E Fowler Avenue) (FDOT Maintained Intersection)	Short-term	▪ Refurbish crosswalk pavement markings	\$22,383	\$2,238	\$2,462	\$5,417	\$32,500	\$6,500	\$5,850	\$44,850	\$44,850	\$456,745		
		▪ Ensure crosswalk lines are parallel with vehicle tires	<i>Assumed no cost included in resurfacing</i>											
		▪ Remove debris from pedestrian islands as there is an accumulation of pebbles especially at the pedestrian island in the northeast corner and prioritize as a continuing maintenance item after initial clean	<i>Assumed no cost included in resurfacing</i>											
	▪ Evaluate the geometry of the right turning movements where there is evidence of vehicle off-tracking	<i>Assumed no cost included in resurfacing</i>												
	Mid-term	▪ Consider implementing the Department's recommendations in the Fowler Avenue Multimodal Study to reconstruct the channelized right turn lanes to improve visibility, reduce turning speed and utilize truck aprons to change the feel of the movement	\$205,561	\$20,556	\$22,612	\$49,746	\$298,475	\$59,695	\$53,725	\$411,895	\$411,895			
		▪ Coordinate with the County Utility Coordinator to evaluate potential relocation of sight obstructions on the northwest quadrant that impede the line of sight of right-turning vehicles.	<i>Assumed no cost for coordination item</i>											
North of SR-582 (E Fowler Avenue)	Short-term	▪ Coordinate with County Utility Coordinator to evaluate whether obstructions can be mounted on the opposite side of the pole to avoid interference with the clear sidewalk width	<i>Assumed no cost for coordination item</i>										\$0	\$0
USF Pine Drive / University Square Drive	Short-term	▪ Install "turning vehicles stop for pedestrians" signs on each approach	\$1,500	\$150	\$165	\$363	\$2,178	\$436	\$392	\$3,006	\$94,377	\$274,525		
		▪ Evaluate feasibility of pedestrian pushbutton actuated right turn on red restrictions with blank-out signs	\$45,600	\$4,560	\$5,016	\$11,035	\$66,211	\$13,242	\$11,918	\$91,371				
	Mid-Term	▪ Evaluate drainage to correct the observed silt collecting in drainage features	\$73,680	\$7,368	\$8,105	\$17,831	\$106,983	\$21,397	\$19,257	\$147,637	\$147,637			
		▪ Mitigate observed sidewalk cracking at USF Pine Drive / University Square Drive to provide a uniform walking path	<i>Assume low cost for maintenance item</i>											
	Long-term	▪ Provide wider approach to pedestrian ramp on the northwest corner to eliminate existing pinch point that may force users into the roadway	\$16,225	\$1,623	\$1,785	\$3,926	\$23,559	\$4,712	\$4,241	\$32,511	\$32,511			
Campus Hill Drive (New Signal Project)	Planned Improvements	▪ New traffic signal and pedestrian features. This signal will provide a protected pedestrian crossing to access the transit stop on the east side of the corridor.	<i>Improvement scheduled in new signal project</i>										\$0	\$32,511
		▪ New 10-foot sidewalk on east side of CR-581 (Bruce B Downs Boulevard)	<i>Improvement scheduled in new signal project</i>											
		▪ Reconstruction of existing sidewalk to eight-foot width on west side of CR-581 (Bruce B Downs Boulevard)	<i>Improvement scheduled in new signal project</i>											
	Long-term	▪ Consider modifying the connection to reduce the turning radii and include only one inbound lane to shorten the pedestrian crossing length. The second inbound lane merges just west of the intersection.	\$16,225	\$1,623	\$1,785	\$3,926	\$23,559	\$4,712	\$4,241	\$32,511	\$32,511			
North of Campus Hill Dr (Within Sidewalk Project)	Planned Improvements	▪ New 10-foot sidewalk on east side of CR-581 (Bruce B Downs Boulevard)	<i>Improvement scheduled in sidewalk project</i>										\$0	\$0
		▪ Reconstruction of existing sidewalk to eight-foot width on west side of CR-581 (Bruce B Downs Boulevard). Ensure that existing sidewalk edge drop-off is corrected in the project.	<i>Improvement scheduled in sidewalk project</i>											
Northside Mental Health Center (Within Sidewalk Project)	Planned Improvements	▪ New 10-foot sidewalk on east side of CR-581 (Bruce B Downs Boulevard)	<i>Improvement scheduled in sidewalk project</i>										\$0	\$26,915
		▪ Reconstruction of existing sidewalk to eight-foot width on west side of CR-581 (Bruce B Downs Boulevard)	<i>Improvement scheduled in sidewalk project</i>											
		▪ Replace missing stop sign on the eastbound approach to CR-581 (Bruce B Downs Boulevard)	<i>Improvement scheduled in sidewalk project</i>											
	Mid-term	▪ Consider creating median refuge area to allow for a two-stage pedestrian crossing by extending the median nose further east	\$13,432	\$1,343	\$1,478	\$3,251	\$19,503	\$3,901	\$3,511	\$26,915	\$26,915			
IQ Apartments Entrance (Within Sidewalk Project)	Planned Improvements	▪ New 10-foot sidewalk on east side of CR-581 (Bruce B Downs Boulevard)	<i>Improvement scheduled in sidewalk project</i>										\$0	\$0
		▪ Reconstruction of existing sidewalk to eight-foot width on west side of CR-581 (Bruce B Downs Boulevard)	<i>Improvement scheduled in sidewalk project</i>											
Richard Silver Way (New Signal Project)	Planned Improvements	▪ New traffic signal and pedestrian features	<i>Improvement scheduled in sidewalk project</i>										\$0	\$0
		▪ New 10-foot sidewalk on east side of CR-581 (Bruce B Downs Boulevard)	<i>Improvement scheduled in sidewalk project</i>											
		▪ Reconstruction of existing sidewalk to eight-foot width on west side of CR-581 (Bruce B Downs Boulevard)	<i>Improvement scheduled in sidewalk project</i>											
E 131 st Avenue / USF Holly Drive (Within Sidewalk Project)	Planned Improvements	▪ New 10-foot sidewalk on east side of CR-581 (Bruce B Downs Boulevard) that terminates at E 131 st Avenue / USF Holly Drive	<i>Improvement scheduled in sidewalk project</i>										\$0	\$0
		Long-term	▪ Improve E 131 st Avenue west of Bruce B Downs Boulevard to incorporate the recommended typical section from the E 131 st Avenue PLAT Study which includes 10-foot wide sidewalks, five-foot bike lanes, and 11-foot travel lanes	<i>To be constructed as part of future E 131st Avenue Project</i>										
E 132 nd Avenue / USF Banyan Circle	Short-term	▪ Evaluate mitigation strategies to prevent silt buildup from water draining across the sidewalk	\$20,232	\$2,023	\$2,226	\$4,896	\$29,377	\$5,875	\$5,288	\$40,540	\$40,540	\$40,540		
Wells Fargo Bank Driveway	Short-term	▪ Provide detectable warning surface pads	\$1,200	\$120	\$132	\$290	\$1,742	\$348	\$314	\$2,405	\$2,405	\$51,041		
	Long-term	▪ As part of the overall typical section modifications, provide wider sidewalk and reconstruct the driveway apron	\$24,273	\$2,427	\$2,670	\$5,874	\$35,244	\$7,049	\$6,344	\$48,636	\$48,636			
CR-582A (E Fletcher Avenue)	Short-term	▪ Refurbish worn crosswalk markings	\$22,371	\$2,237	\$2,461	\$5,414	\$32,483	\$6,497	\$5,847	\$44,827	\$188,414	\$396,565		
		▪ Install detectable warnings on northeast and southeast corners	\$1,200	\$120	\$132	\$290	\$1,742	\$348	\$314	\$2,405				
		▪ Install separate pedestrian pushbuttons and the required flat-landing areas for Americans with Disabilities Act (ADA) compliance	\$64,789	\$6,479	\$7,127	\$15,679	\$94,074	\$18,815	\$16,933	\$129,822				
		▪ Install flexible backplates on signal heads	\$5,670	\$567	\$624	\$1,372	\$8,233	\$1,647	\$1,482	\$11,361				
	Mid-term	▪ Bulb-out intersection on southwest corner to reduce crossing distance and to formalize the southbound right-turn lane into the convenience store	\$38,684	\$3,868	\$4,255	\$9,362	\$56,170	\$11,234	\$10,111	\$77,514	\$208,151			
		▪ Develop a project to mitigate and upgrade general ADA, pushbutton, and pedestrian issues observed at the intersection	\$65,196	\$6,520	\$7,172	\$15,777	\$94,665	\$18,933	\$17,040	\$130,637				

Intersection Name	Time Frame	Spot Recommendation	Unit Total	MOB (10%)	MOT (10%)	Unknown (20%)	Component Total	Design (20%)	CEI (15%)	Rec Sub Total	Time Frame Sub Total	Spot Total	
North of CR-582A (E Fletcher Avenue)	Short-term	Provide post mounted signs along the median directing pedestrians to cross at the signalized intersection and consider use of sidewalk pavement markings to direct users to controlled crossing locations.	\$2,780	\$278	\$306	\$673	\$4,037	\$807	\$727	\$5,570	\$5,570	\$5,570	
Medical Park Drive / Mission BBQ	Short-term	Trim vegetation encroaching on the sidewalk	Assumed low cost maintenance item									\$1,613	\$1,613
		Pave a one-foot bulb out on the opposite side of the sidewalk from the utility pole to provide a wider usable sidewalk	\$805	\$81	\$89	\$195	\$1,169	\$234	\$210	\$1,613			
E 138 th Avenue / Azalea Circle	Short-term	Upgrade standard crosswalk markings to special emphasis markings	\$10,575	\$1,058	\$1,163	\$2,559	\$15,355	\$3,071	\$2,764	\$21,190	\$21,190	\$239,145	
	Mid-term	Provide crosswalk and pedestrian features on the south leg of the intersection	\$88,534	\$8,853	\$9,739	\$21,425	\$128,551	\$25,710	\$23,139	\$177,401	\$217,955		
		Mitigate identified drainage issues on the southwest corner	\$20,239	\$2,024	\$2,226	\$4,898	\$29,387	\$5,877	\$5,290	\$40,554			
E 138 th Avenue / Azalea Circle to E Bearss Avenue	Long-term	Section of sidewalk offset from travel lanes offers buffer for users from traffic; this is a trade-off that offers less visibility of bicyclists and pedestrians for drivers leaving businesses especially with landscaping. Evaluate opportunities to shift the sidewalk closer to the travel lanes at the crossing locations.	\$249,131	\$24,913	\$27,404	\$60,290	\$361,739	\$72,348	\$65,113	\$499,199	\$499,199	\$499,199	
Barnhard Drive to University Woods Place	Long-term	Pending the results of the ongoing midblock crossing evaluation, schedule a project construct a protected pedestrian crossing near the two existing bus stops	\$311,216	\$31,122	\$34,234	\$75,314	\$451,885	\$90,377	\$81,339	\$623,601	\$623,601	\$623,601	
Grand Pavilion Drive	Mid-term	Evaluate strategies to mitigate observed water ponding at the curb ramp	\$37,188	\$3,719	\$4,091	\$9,000	\$53,998	\$10,800	\$9,720	\$74,517	\$74,517	\$74,517	
South of E Bearss Avenue	Short-term	Repair uneven sidewalk on the west side of CR-581 (Bruce B Downs Boulevard) to provide a uniform walking surface	Assumed low cost maintenance item									\$3,507	\$3,507
		Provide handrail at drainage inlet drop-off location on the west side of CR-581 (Bruce B Downs Boulevard). Note that the Google Street View indicates that the inlet had a handrail prior to the field review.	\$1,750	\$175	\$193	\$424	\$2,541	\$508	\$457	\$3,507			
E Bearss Avenue	Short-term	Repair the pushbutton in northwest corner	Assumed low cost maintenance item									\$344,360	\$551,216
		Due to the speed of the eastbound and southbound right-turns, consider installing push-button actuated pedestrian crossing ahead warning signs with flashing beacons at or in advance of the crosswalk	\$57,900	\$5,790	\$6,369	\$14,012	\$84,071	\$16,814	\$15,133	\$116,018			
	Provide connection from the sidewalk to the pedestrian crossing in the northwest corner of the intersection	\$113,957	\$11,396	\$12,535	\$27,578	\$165,466	\$33,093	\$29,784	\$228,342				
	Long-term	Consider modifying the geometry of the eastbound and southbound right turn movements to reduce the turning speed, improve the visibility of the yield movement and to reduce the number of "weaves" at this point	\$103,234	\$10,323	\$11,356	\$24,983	\$149,896	\$29,979	\$26,981	\$206,856	\$206,856		
Total			\$1,635,530	\$163,553	\$179,908	\$395,798	\$2,374,790	\$474,958	\$427,462	\$3,277,210	\$3,277,210	\$3,277,210	

Appendix A:
Planning Level Estimate Detail Sheets

PLANNING LEVEL ESTIMATE DETAIL SHEET

Corridorwide - Detectable Warnings

PAY ITEM #	ITEM DESCRIPTION	UNIT	QUANTITY	UNIT COST	TOTAL COST
0101 1	MOBILIZATION	%	10%	\$36,000.00	\$3,600.00
0102 1	MAINTENANCE OF TRAFFIC	%	10%	\$39,600.00	\$3,960.00
0527 2	DETECTABLE WARNINGS	SF	1200	\$30.00	\$36,000.00
	PROJECT UNKNOWNNS	%	20%	\$43,560.00	\$8,712.00
Corridorwide - Detect Warn			COMPONENT TOTAL		\$52,272.00

PLANNING LEVEL ESTIMATE DETAIL SHEET

Corridorwide - R10-15

PAY ITEM #	ITEM DESCRIPTION	UNIT	QUANTITY	UNIT COST	TOTAL COST
0101 1	MOBILIZATION	%	10%	\$10,500.00	\$1,050.00
0102 1	MAINTENANCE OF TRAFFIC	%	10%	\$11,550.00	\$1,155.00
0700 1 11	SINGLE POST SIGN, F&I GROUND MOUNT, UP TO 12 SF	AS	25	\$375.00	\$9,375.00
0700 1 60	SINGLE POST SIGN, REMOVE	AS	25	\$45.00	\$1,125.00
	PROJECT UNKNOWNNS	%	20%	\$12,705.00	\$2,541.00
Corridorwide - R10-15			COMPONENT TOTAL		\$15,246.00

PLANNING LEVEL ESTIMATE DETAIL SHEET

Corridorwide - SE Crosswalks

PAY ITEM #	ITEM DESCRIPTION	UNIT	QUANTITY	UNIT COST	TOTAL COST
0101 1	MOBILIZATION	%	10%	\$106,518.00	\$10,651.80
0102 1	MAINTENANCE OF TRAFFIC	%	10%	\$117,169.80	\$11,716.98
0327 70 6	MILLING EXIST ASPH PAVT, 1 1/2" AVG DEPTH	SY	3336	\$3.00	\$10,008.00
0337 7 83	ASPHALT CONCRETE FRICTION COURSE, TRAFFIC C, FC-12.5, PG 76-22	TN	276	\$117.00	\$32,292.00
0711 11123	THERMOPLASTIC, STANDARD, WHITE, SOLID, 12" FOR CROSSWALK AND ROUNDABOUT	LF	3336	\$3.00	\$10,008.00
0711 11125	THERMOPLASTIC, STANDARD, WHITE, SOLID, 24" FOR STOP LINE AND CROSSWALK	LF	1668	\$5.00	\$8,340.00
0711 14125	THERMOPLASTIC, PREFORMED, WHITE, SOLID, 24" FOR CROSSWALK	LF	3058	\$15.00	\$45,870.00
	PROJECT UNKNOWNNS	%	20%	\$25,777.36	\$5,155.47
Corridorwide - SE Crosswalks			COMPONENT TOTAL		\$134,042.25

PLANNING LEVEL ESTIMATE DETAIL SHEET

Corridorwide - Reflector Strips

PAY ITEM #	ITEM DESCRIPTION	UNIT	QUANTITY	UNIT COST	TOTAL COST
0101 1	MOBILIZATION	%	10%	\$375.00	\$37.50
0102 1	MAINTENANCE OF TRAFFIC	%	10%	\$412.50	\$41.25
0700 13 15	RETROREFLECTIVE SIGN STRIP- FURNISH AND INSTALL, 5'	EA	3	\$125.00	\$375.00
	PROJECT UNKNOWNNS	%	20%	\$453.75	\$90.75
Corridorwide - Reflector Strips			COMPONENT TOTAL		\$544.50

PLANNING LEVEL ESTIMATE DETAIL SHEET

Corridorwide - Stop Lines

PAY ITEM #	ITEM DESCRIPTION	UNIT	QUANTITY	UNIT COST	TOTAL COST
0101 1	MOBILIZATION	%	10%	\$2,700.00	\$270.00
0102 1	MAINTENANCE OF TRAFFIC	%	10%	\$2,970.00	\$297.00
0711 11125	THERMOPLASTIC, STANDARD, WHITE, SOLID, 24" FOR STOP LINE AND CROSSWALK	LF	540	\$5.00	\$2,700.00
	PROJECT UNKNOWNNS	%	20%	\$3,267.00	\$653.40
Corridorwide - Stop Lines			COMPONENT TOTAL		\$3,920.40

PLANNING LEVEL ESTIMATE DETAIL SHEET

Corridorwide - Convert Full Median to Directional Median

PAY ITEM #	ITEM DESCRIPTION	UNIT	QUANTITY	UNIT COST	TOTAL COST
0101 1	MOBILIZATION	%	10%	\$121,418.00	\$12,141.80
0102 1	MAINTENANCE OF TRAFFIC	%	10%	\$133,559.80	\$13,355.98
0104 10 3	SEDIMENT BARRIER	LF	1000	\$2.00	\$2,000.00
0110 1 1	CLEARING & GRUBBING	AC	0.1	\$32,000.00	\$3,200.00
0110 4 10	REMOVAL OF EXISTING CONCRETE	SY	369	\$25.00	\$9,225.00
0120 1	REGULAR EXCAVATION	CY	682	\$12.00	\$8,184.00
0160 4	TYPE B STABILIZATION	SY	400	\$8.00	\$3,200.00
0285709	OPTIONAL BASE, BASE GROUP 09	SY	400	\$31.00	\$12,400.00
0327 70 6	MILLING EXIST ASPH PAVT, 1 1/2" AVG DEPTH	SY	800	\$3.00	\$2,400.00
0334 1 53	SUPERPAVE ASPHALTIC CONCRETE, TRAFFIC C, PG76-22	TN	33.0	\$105.00	\$3,465.00
0337 7 83	ASPHALT CONCRETE FRICTION COURSE, TRAFFIC C, FC-12.5, PG 76-22	TN	99.0	\$117.00	\$11,583.00
0520 70	CONCRETE TRAFFIC SEPARATOR, SPECIAL- VARIABLE WIDTH	SY	800	\$78.00	\$62,400.00
0700 1 11	SINGLE POST SIGN, F&I GROUND MOUNT, UP TO 12 SF	AS	2	\$375.00	\$750.00
0700 1 60	SINGLE POST SIGN, REMOVE	AS	2	\$45.00	\$90.00
0705 11 3	DELINEATOR, FLEXIBLE HIGH VISABILITY MEDIAN	EA	2	\$175.00	\$350.00
0706 1 1	RAISED PAVEMENT MARKER, TYPE B WITHOUT FINAL SURFACE MARKINGS	EA	35	\$9.00	\$315.00
0710 11290	PAINTED PAVEMENT MARKINGS, STANDARD, YELLOW, ISLAND NOSE	SF	20	\$3.00	\$60.00
0711 11170	THERMOPLASTIC, STANDARD, WHITE, ARROW	EA	8	\$65.00	\$520.00
0711 11241	THERMOPLASTIC, STANDARD, YELLOW, 2-4 DOTTED GUIDE LINE /6-10 DOTTED EXTENSION LINE, 6"	GM	0.04	\$2,500.00	\$100.00
0711 16101	THERMOPLASTIC, STANDARD-OTHER SURFACES, WHITE, SOLID, 6"	GM	0.14	\$4,200.00	\$588.00
0711 16201	THERMOPLASTIC, STANDARD-OTHER SURFACES, YELLOW, SOLID, 6"	GM	0.14	\$4,200.00	\$588.00
	PROJECT UNKNOWNNS	%	20%	\$146,915.78	\$29,383.16
Corridorwide - Directional Medi			COMPONENT TOTAL		\$176,298.94

PLANNING LEVEL ESTIMATE DETAIL SHEET

Corridorwide - Offset Left Turn Lanes

PAY ITEM #	ITEM DESCRIPTION	UNIT	QUANTITY	UNIT COST	TOTAL COST
0101 1	MOBILIZATION	%	10%	\$691,590.50	\$69,159.05
0102 1	MAINTENANCE OF TRAFFIC	%	10%	\$760,749.55	\$76,074.96
0104 10 3	SEDIMENT BARRIER	LF	9360	\$2.00	\$18,720.00
0110 1 1	CLEARING & GRUBBING	AC	0.6	\$32,000.00	\$19,200.00
0110 4 10	REMOVAL OF EXISTING CONCRETE	SY	2398	\$25.00	\$59,950.00
0120 1	REGULAR EXCAVATION	CY	4430	\$12.00	\$53,160.00
0160 4	TYPE B STABILIZATION	SY	2600	\$8.00	\$20,800.00
0285709	OPTIONAL BASE, BASE GROUP 09	SY	2600	\$31.00	\$80,600.00
0327 70 6	MILLING EXIST ASPH PAVT, 1 1/2" AVG DEPTH	SY	5200	\$3.00	\$15,600.00
0334 1 53	SUPERPAVE ASPHALTIC CONCRETE, TRAFFIC C, PG76-22	TN	214.5	\$105.00	\$22,522.50
0337 7 83	ASPHALT CONCRETE FRICTION COURSE, TRAFFIC C, FC-12.5, PG 76-22	TN	644.0	\$117.00	\$75,348.00
0520 70	CONCRETE TRAFFIC SEPARATOR, SPECIAL- VARIABLE WIDTH	SY	3900	\$78.00	\$304,200.00
0700 1 11	SINGLE POST SIGN, F&I GROUND MOUNT, UP TO 12 SF	AS	13	\$375.00	\$4,875.00
0700 1 60	SINGLE POST SIGN, REMOVE	AS	13	\$45.00	\$585.00
0705 11 3	DELINEATOR, FLEXIBLE HIGH VISABILITY MEDIAN	EA	13	\$175.00	\$2,275.00
0706 1 1	RAISED PAVEMENT MARKER, TYPE B WITHOUT FINAL SURFACE MARKINGS	EA	228	\$9.00	\$2,052.00
0710 11290	PAINTED PAVEMENT MARKINGS, STANDARD, YELLOW, ISLAND NOSE	SF	130	\$3.00	\$390.00
0711 11170	THERMOPLASTIC, STANDARD, WHITE, ARROW	EA	52	\$65.00	\$3,380.00
0711 11241	THERMOPLASTIC, STANDARD, YELLOW, 2-4 DOTTED GUIDE LINE /6-10 DOTTED EXTENSION LINE, 6"	GM	0.25	\$2,500.00	\$625.00
0711 16101	THERMOPLASTIC, STANDARD-OTHER SURFACES, WHITE, SOLID, 6"	GM	0.87	\$4,200.00	\$3,654.00
0711 16201	THERMOPLASTIC, STANDARD-OTHER SURFACES, YELLOW, SOLID, 6"	GM	0.87	\$4,200.00	\$3,654.00
	PROJECT UNKNOWNNS	%	20%	\$836,824.51	\$167,364.90
Corridorwide - Offset LT Lanes			COMPONENT TOTAL		\$1,004,189.41

PLANNING LEVEL ESTIMATE DETAIL SHEET

Corridorwide - Signal Backplate

PAY ITEM #	ITEM DESCRIPTION	UNIT	QUANTITY	UNIT COST	TOTAL COST
0101 1	MOBILIZATION	%	10%	\$14,175.00	\$1,417.50
0102 1	MAINTENANCE OF TRAFFIC	%	10%	\$15,592.50	\$1,559.25
0650 2109	VEHICULAR SIGNAL AUXILIARIES, REPAIR/REPLACE/RETROFIT/FURNISH & INSTALL, BACKPLATE- FLEXIBLE REQUIRED	EA	45	\$315.00	\$14,175.00
	PROJECT UNKNOWNNS	%	20%	\$17,151.75	\$3,430.35
Corridorwide - Signal Backplate			COMPONENT TOTAL		\$20,582.10

PLANNING LEVEL ESTIMATE DETAIL SHEET

Corridorwide - RTOR Blank Out

PAY ITEM #	ITEM DESCRIPTION	UNIT	QUANTITY	UNIT COST	TOTAL COST
0101 1	MOBILIZATION	%	10%	\$180,150.00	\$18,015.00
0102 1	MAINTENANCE OF TRAFFIC	%	10%	\$198,165.00	\$19,816.50
0630 2 11	CONDUIT, FURNISH & INSTALL, OPEN TRENCH	LF	600	\$10.00	\$6,000.00
0630 2 12	CONDUIT, FURNISH & INSTALL, DIRECTIONAL BORE	LF	2000	\$27.50	\$55,000.00
0632 7 2	SIGNAL CABLE- REPAIR/REPLACE/OTHER, FURNISH & INSTALL	LF	2600	\$6.00	\$15,600.00
0635 2 11	PULL & SPLICE BOX, F&I, 13" x 24" COVER SIZE	EA	26	\$800.00	\$20,800.00
0670 5400	TRAFFIC CONTROLLER ASSEMBLY, MODIFY	AS	4	\$2,000.00	\$8,000.00
0700 11391	ELECTRONIC DISPLAY SIGN, FURNISH & INSTALL OVERHEAD MOUNT- AC POWERED, BLANK OUT SIGN, UP TO 12 SF	AS	13	\$5,750.00	\$74,750.00
	PROJECT UNKNOWNNS	%	20%	\$217,981.50	\$43,596.30
Corridorwide - RTOR Blank Out			COMPONENT TOTAL		\$261,577.80

PLANNING LEVEL ESTIMATE DETAIL SHEET

Holly to Fletcher - Green Markings at Bike Conflict Zones

PAY ITEM #	ITEM DESCRIPTION	UNIT	QUANTITY	UNIT COST	TOTAL COST
0101 1	MOBILIZATION	%	10%	\$66,580.00	\$6,658.00
0102 1	MAINTENANCE OF TRAFFIC	%	10%	\$73,238.00	\$7,323.80
0104 10 3	SEDIMENT BARRIER	LF	800	\$2.00	\$1,600.00
0523 1 3	PATTERNED PAVEMENT, VEHICULAR AREAS- GREEN BIKE LANE	SY	623	\$100.00	\$62,300.00
0711 14160	THERMOPLASTIC, PREFORMED, WHITE, MESSAGE	EA	8	\$200.00	\$1,600.00
0711 14170	THERMOPLASTIC, PREFORMED, WHITE, ARROW	EA	8	\$135.00	\$1,080.00
	PROJECT UNKNOWNNS	%	20%	\$80,561.80	\$16,112.36
Holly Flectcher - Bike Confl			COMPONENT TOTAL		\$96,674.16

PLANNING LEVEL ESTIMATE DETAIL SHEET

Fowler USF Pine - Typical

PAY ITEM #	ITEM DESCRIPTION	UNIT	QUANTITY	UNIT COST	TOTAL COST
0101 1	MOBILIZATION	%	10%	\$889,212.20	\$88,921.22
0102 1	MAINTENANCE OF TRAFFIC	%	10%	\$978,133.42	\$97,813.34
0104 10 3	SEDIMENT BARRIER	LF	1760	\$2.00	\$3,520.00
0110 1 1	CLEARING & GRUBBING	AC	1.80	\$32,000.00	\$57,600.00
0110 4 10	REMOVAL OF EXISTING CONCRETE	SY	1778	\$25.00	\$44,450.00
0120 1	REGULAR EXCAVATION	CY	1334	\$12.00	\$16,008.00
0120 6	EMBANKMENT	CY	1333	\$10.00	\$13,333.33
0160 4	TYPE B STABILIZATION	SY	356	\$8.00	\$2,848.00
0285709	OPTIONAL BASE, BASE GROUP 09	SY	356	\$31.00	\$11,036.00
0327 70 6	MILLING EXIST ASPH PAVT, 1 1/2" AVG DEPTH	SY	10880	\$3.00	\$32,640.00
0334 1 53	SUPERPAVE ASPHALTIC CONCRETE, TRAFFIC C, PG76-22	TN	29.4	\$105.00	\$3,087.00
0337 7 83	ASPHALT CONCRETE FRICTION COURSE, TRAFFIC C, FC-12.5, PG 76-22	TN	898	\$117.00	\$105,019.20
0425 1461	INLETS, CURB, TYPE J-6, <10'	EA	16	\$8,250.00	\$132,000.00
0430175136	PIPE CULVERT, OPT MATERIAL, ROUND, 36"S/CD	LF	1600	\$145.00	\$232,000.00
0520 1 10	CONCRETE CURB & GUTTER, TYPE F	LF	1600	\$30.00	\$48,000.00
0520 70	CONCRETE TRAFFIC SEPARATOR, SPECIAL- VARIABLE WIDTH	SY	712	\$78.00	\$55,536.00
0522 2	CONCRETE SIDEWALK AND DRIVEWAYS, 6" THICK	SY	1600	\$62.00	\$99,200.00
0570 1 2	PERFORMANCE TURF, SOD	SY	2667	\$4.00	\$10,666.67
0700 1 11	SINGLE POST SIGN, F&I GROUND MOUNT, UP TO 12 SF	AS	16	\$375.00	\$6,000.00
0700 1 60	SINGLE POST SIGN, REMOVE	AS	16	\$45.00	\$720.00
0705 11 3	DELINEATOR, FLEXIBLE HIGH VISABILITY MEDIAN	EA	2	\$175.00	\$350.00
0706 1 1	RAISED PAVEMENT MARKER, TYPE B WITHOUT FINAL SURFACE MARKINGS	EA	420	\$9.00	\$3,780.00
0710 11290	PAINTED PAVEMENT MARKINGS, STANDARD, YELLOW, ISLAND NOSE	SF	20	\$3.00	\$60.00
0711 11123	THERMOPLASTIC, STANDARD, WHITE, SOLID, 12" FOR CROSSWALK AND ROUNDABOUT	LF	320	\$3.00	\$960.00
0711 11170	THERMOPLASTIC, STANDARD, WHITE, ARROW	EA	12	\$65.00	\$780.00
0711 11241	THERMOPLASTIC, STANDARD, YELLOW, 2-4 DOTTED GUIDE LINE /6-10 DOTTED EXTENSION LINE, 6"	GM	0.04	\$2,500.00	\$100.00
0711 14125	THERMOPLASTIC, PREFORMED, WHITE, SOLID, 24" FOR CROSSWALK	LF	320	\$15.00	\$4,800.00
0711 16101	THERMOPLASTIC, STANDARD-OTHER SURFACES, WHITE, SOLID, 6"	GM	0.38	\$4,200.00	\$1,596.00
0711 16131	THERMOPLASTIC, OTHER SURFACES, WHITE, SKIP, 6", 10-30 SKIP OR 3-9 LANE DROP	GM	0.91	\$2,000.00	\$1,820.00
0711 16201	THERMOPLASTIC, STANDARD-OTHER SURFACES, YELLOW, SOLID, 6"	GM	0.31	\$4,200.00	\$1,302.00
	PROJECT UNKNOWNNS	%	20%	\$1,075,946.76	\$215,189.35
Fowler USF Pine - Typical			COMPONENT TOTAL		\$1,291,136.11

PLANNING LEVEL ESTIMATE DETAIL SHEET

Fowler to USF Pine - Green Pavement Markings at Bike Conflict Zones

PAY ITEM #	ITEM DESCRIPTION	UNIT	QUANTITY	UNIT COST	TOTAL COST
0101 1	MOBILIZATION	%	10%	\$33,340.00	\$3,334.00
0102 1	MAINTENANCE OF TRAFFIC	%	10%	\$36,674.00	\$3,667.40
0104 10 3	SEDIMENT BARRIER	LF	400	\$2.00	\$800.00
0523 1 3	PATTERNED PAVEMENT, VEHICULAR AREAS- GREEN BIKE LANE	SY	312	\$100.00	\$31,200.00
0711 14160	THERMOPLASTIC, PREFORMED, WHITE, MESSAGE	EA	4	\$200.00	\$800.00
0711 14170	THERMOPLASTIC, PREFORMED, WHITE, ARROW	EA	4	\$135.00	\$540.00
	PROJECT UNKNOWNNS	%	20%	\$40,341.40	\$8,068.28
Fowler USF Pine - Bike Confl			COMPONENT TOTAL		\$48,409.68

PLANNING LEVEL ESTIMATE DETAIL SHEET

Holly to Fletcher - New Typical Section

PAY ITEM #	ITEM DESCRIPTION	UNIT	QUANTITY	UNIT COST	TOTAL COST
0101 1	MOBILIZATION	%	10%	\$1,426,493.10	\$142,649.31
0102 1	MAINTENANCE OF TRAFFIC	%	10%	\$1,569,142.41	\$156,914.24
0104 10 3	SEDIMENT BARRIER	LF	2860	\$2.00	\$5,720.00
0110 1 1	CLEARING & GRUBBING	AC	2.6	\$32,000.00	\$83,200.00
0110 4 10	REMOVAL OF EXISTING CONCRETE	SY	2889	\$25.00	\$72,225.00
0120 1	REGULAR EXCAVATION	CY	1397	\$12.00	\$16,764.00
0120 6	EMBANKMENT	CY	2167	\$10.00	\$21,666.67
0160 4	TYPE B STABILIZATION	SY	578	\$8.00	\$4,624.00
0285709	OPTIONAL BASE, BASE GROUP 09	SY	578	\$31.00	\$17,918.00
0327 70 6	MILLING EXIST ASPH PAVT, 1 1/2" AVG DEPTH	SY	17707	\$3.00	\$53,121.00
0334 1 53	SUPERPAVE ASPHALTIC CONCRETE, TRAFFIC C, PG76-22	TN	47.7	\$105.00	\$5,008.50
0337 7 83	ASPHALT CONCRETE FRICTION COURSE, TRAFFIC C, FC-12.5, PG 76-22	TN	1461	\$117.00	\$170,913.60
0425 1461	INLETS, CURB, TYPE J-6, <10'	EA	26	\$8,250.00	\$214,500.00
0430175136	PIPE CULVERT, OPT MATERIAL, ROUND, 36"S/CD	LF	2600	\$145.00	\$377,000.00
0520 1 10	CONCRETE CURB & GUTTER, TYPE F	LF	2600	\$30.00	\$78,000.00
0520 70	CONCRETE TRAFFIC SEPARATOR, SPECIAL- VARIABLE WIDTH	SY	1156	\$78.00	\$90,168.00
0522 2	CONCRETE SIDEWALK AND DRIVEWAYS, 6" THICK	SY	2600	\$62.00	\$161,200.00
0570 1 2	PERFORMANCE TURF, SOD	SY	4333	\$4.00	\$17,333.33
0700 1 11	SINGLE POST SIGN, F&I GROUND MOUNT, UP TO 12 SF	AS	26	\$375.00	\$9,750.00
0700 1 60	SINGLE POST SIGN, REMOVE	AS	26	\$45.00	\$1,170.00
0705 11 3	DELINEATOR, FLEXIBLE HIGH VISABILITY MEDIAN	EA	4	\$175.00	\$700.00
0706 1 1	RAISED PAVEMENT MARKER, TYPE B WITHOUT FINAL SURFACE MARKINGS	EA	683	\$9.00	\$6,147.00
0710 11290	PAINTED PAVEMENT MARKINGS, STANDARD, YELLOW, ISLAND NOSE	SF	40	\$3.00	\$120.00
0711 11123	THERMOPLASTIC, STANDARD, WHITE, SOLID, 12" FOR CROSSWALK AND ROUNDABOUT	LF	560	\$3.00	\$1,680.00
0711 11170	THERMOPLASTIC, STANDARD, WHITE, ARROW	EA	20	\$65.00	\$1,300.00
0711 11241	THERMOPLASTIC, STANDARD, YELLOW, 2-4 DOTTED GUIDE LINE /6-10 DOTTED EXTENSION LINE, 6"	GM	0.08	\$2,500.00	\$200.00
0711 14125	THERMOPLASTIC, PREFORMED, WHITE, SOLID, 24" FOR CROSSWALK	LF	560	\$15.00	\$8,400.00
0711 16101	THERMOPLASTIC, STANDARD-OTHER SURFACES, WHITE, SOLID, 6"	GM	0.62	\$4,200.00	\$2,604.00
0711 16131	THERMOPLASTIC, OTHER SURFACES, WHITE, SKIP, 6", 10-30 SKIP OR 3-9 LANE DROP	GM	1.48	\$2,000.00	\$2,960.00
0711 16201	THERMOPLASTIC, STANDARD-OTHER SURFACES, YELLOW, SOLID, 6"	GM	0.50	\$4,200.00	\$2,100.00
	PROJECT UNKNOWNNS	%	20%	\$1,726,056.65	\$345,211.33
Holly Flectcher - Typical			COMPONENT TOTAL		\$2,071,267.98

PLANNING LEVEL ESTIMATE DETAIL SHEET

Fletcher to Bearss - Shared Use Path

PAY ITEM #	ITEM DESCRIPTION	UNIT	QUANTITY	UNIT COST	TOTAL COST
0101 1	MOBILIZATION	%	10%	\$681,125.60	\$68,112.56
0102 1	MAINTENANCE OF TRAFFIC	%	10%	\$749,238.16	\$74,923.82
0104 10 3	SEDIMENT BARRIER	LF	7000	\$2.00	\$14,000.00
0104 18	INLET PROTECTION SYSTEM	EA	20	\$110.00	\$2,200.00
0110 1 1	CLEARING & GRUBBING	AC	1.5	\$32,000.00	\$48,000.00
0110 4 10	REMOVAL OF EXISTING CONCRETE	SY	4000	\$25.00	\$100,000.00
0120 1	REGULAR EXCAVATION	CY	1000	\$12.00	\$12,000.00
0120 6	EMBANKMENT	CY	3333	\$10.00	\$33,333.33
0327 70 6	MILLING EXIST ASPH PAVT, 1 1/2" AVG DEPTH	SY	1173	\$3.00	\$3,520.00
0337 7 83	ASPHALT CONCRETE FRICTION COURSE, TRAFFIC C, FC-12.5, PG 76-22	TN	97	\$117.00	\$11,325.60
0522 2	CONCRETE SIDEWALK AND DRIVEWAYS, 6" THICK	SY	6000	\$62.00	\$372,000.00
0527 2	DETECTABLE WARNINGS	SF	880	\$30.00	\$26,400.00
0570 1 2	PERFORMANCE TURF, SOD	SY	6667	\$4.00	\$26,666.67
0711 11123	THERMOPLASTIC, STANDARD, WHITE, SOLID, 12" FOR CROSSWALK AND ROUNDABOUT	LF	1760	\$3.00	\$5,280.00
0711 14125	THERMOPLASTIC, PREFORMED, WHITE, SOLID, 24" FOR CROSSWALK	LF	1760	\$15.00	\$26,400.00
	PROJECT UNKNOWNNS	%	20%	\$824,161.98	\$164,832.40
Fletcher Bearss - Shared Use			COMPONENT TOTAL		\$988,994.37

PLANNING LEVEL ESTIMATE DETAIL SHEET

Fletcher to Bearss - Resurfacing

PAY ITEM #	ITEM DESCRIPTION	UNIT	QUANTITY	UNIT COST	TOTAL COST
0101 1	MOBILIZATION	%	10%	\$1,237,997.50	\$123,799.75
0102 1	MAINTENANCE OF TRAFFIC	%	10%	\$1,361,797.25	\$136,179.73
0104 10 3	SEDIMENT BARRIER	LF	8800	\$2.00	\$17,600.00
0104 18	INLET PROTECTION SYSTEM	EA	10	\$110.00	\$1,100.00
0110 1 1	CLEARING & GRUBBING	AC	0.6	\$32,000.00	\$19,200.00
0110 4 10	REMOVAL OF EXISTING CONCRETE	SY	3556	\$25.00	\$88,900.00
0120 1	REGULAR EXCAVATION	CY	2963	\$12.00	\$35,556.00
0160 4	TYPE B STABILIZATION	SY	1778	\$8.00	\$14,224.00
0285709	OPTIONAL BASE, BASE GROUP 09	SY	1778	\$31.00	\$55,118.00
0327 70 6	MILLING EXIST ASPH PAVT, 1 1/2" AVG DEPTH	SY	53334	\$3.00	\$160,002.00
0334 1 53	SUPERPAVE ASPHALTIC CONCRETE, TRAFFIC C, PG76-22	TN	146.7	\$105.00	\$15,403.50
0337 7 83	ASPHALT CONCRETE FRICTION COURSE, TRAFFIC C, FC-12.5, PG 76-22	TN	4400.0	\$117.00	\$514,800.00
0520 70	CONCRETE TRAFFIC SEPARATOR, SPECIAL- VARIABLE WIDTH	SY	1778	\$78.00	\$138,684.00
0705 11 3	DELINEATOR, FLEXIBLE HIGH VISABILITY MEDIAN	EA	15	\$175.00	\$2,625.00
0706 1 1	RAISED PAVEMENT MARKER, TYPE B WITHOUT FINAL SURFACE MARKINGS	EA	15834	\$9.00	\$142,506.00
0710 11290	PAINTED PAVEMENT MARKINGS, STANDARD, YELLOW, ISLAND NOSE	SF	150	\$3.00	\$450.00
0711 11170	THERMOPLASTIC, STANDARD, WHITE, ARROW	EA	60	\$65.00	\$3,900.00
0711 11241	THERMOPLASTIC, STANDARD, YELLOW, 2-4 DOTTED GUIDE LINE /6-10 DOTTED EXTENSION LINE, 6"	GM	0.57	\$2,500.00	\$1,425.00
0711 16101	THERMOPLASTIC, STANDARD-OTHER SURFACES, WHITE, SOLID, 6"	GM	1.90	\$4,200.00	\$7,980.00
0711 16131	THERMOPLASTIC, OTHER SURFACES, WHITE, SKIP, 6",10-30 SKIP OR 3-9 LANE DROP	GM	6.07	\$2,000.00	\$12,140.00
0711 16201	THERMOPLASTIC, STANDARD-OTHER SURFACES, YELLOW, SOLID, 6"	GM	1.52	\$4,200.00	\$6,384.00
	PROJECT UNKNOWNNS	%	20%	\$1,497,976.98	\$299,595.40
Fletcher Bearss - Resurface			COMPONENT TOTAL		\$1,797,572.37

PLANNING LEVEL ESTIMATE DETAIL SHEET

Fletcher to Bearss - Curb and Gutter

PAY ITEM #	ITEM DESCRIPTION	UNIT	QUANTITY	UNIT COST	TOTAL COST
0101 1	MOBILIZATION	%	10%	\$553,120.00	\$55,312.00
0102 1	MAINTENANCE OF TRAFFIC	%	10%	\$608,432.00	\$60,843.20
0104 10 3	SEDIMENT BARRIER	LF	8800	\$2.00	\$17,600.00
0104 18	INLET PROTECTION SYSTEM	EA	10	\$110.00	\$1,100.00
0110 1 1	CLEARING & GRUBBING	AC	2.9	\$32,000.00	\$92,800.00
0120 1	REGULAR EXCAVATION	CY	297	\$12.00	\$3,564.00
0120 6	EMBANKMENT	CY	8889	\$10.00	\$88,890.00
0425 1910	INLETS, CLOSED FLUME	EA	40	\$5,000.00	\$200,000.00
0520 1 10	CONCRETE CURB & GUTTER, TYPE F	LF	2667	\$30.00	\$80,010.00
0570 1 2	PERFORMANCE TURF, SOD	SY	8889	\$4.00	\$35,556.00
0700 1 11	SINGLE POST SIGN, F&I GROUND MOUNT, UP TO 12 SF	AS	80	\$375.00	\$30,000.00
0700 1 60	SINGLE POST SIGN, REMOVE	AS	80	\$45.00	\$3,600.00
	PROJECT UNKNOWNNS	%	20%	\$669,275.20	\$133,855.04
Fletcher Bearss - C&G			COMPONENT TOTAL		\$803,130.24

PLANNING LEVEL ESTIMATE DETAIL SHEET

Fowler - SE Crosswalk

PAY ITEM #	ITEM DESCRIPTION	UNIT	QUANTITY	UNIT COST	TOTAL COST
0101 1	MOBILIZATION	%	10%	\$22,383.00	\$2,238.30
0102 1	MAINTENANCE OF TRAFFIC	%	10%	\$24,621.30	\$2,462.13
0327 70 6	MILLING EXIST ASPH PAVT, 1 1/2" AVG DEPTH	SY	592	\$3.00	\$1,776.00
0337 7 83	ASPHALT CONCRETE FRICTION COURSE, TRAFFIC C, FC-12.5, PG 76-22	TN	49	\$117.00	\$5,733.00
0711 11123	THERMOPLASTIC, STANDARD, WHITE, SOLID, 12" FOR CROSSWALK AND ROUNDABOUT	LF	888	\$3.00	\$2,664.00
0711 14125	THERMOPLASTIC, PREFORMED, WHITE, SOLID, 24" FOR CROSSWALK	LF	814	\$15.00	\$12,210.00
	PROJECT UNKNOWNNS	%	20%	\$27,083.43	\$5,416.69
Fowler - SE Crosswalk			COMPONENT TOTAL		\$32,500.12

PLANNING LEVEL ESTIMATE DETAIL SHEET

Fowler - Channelized Islands

PAY ITEM #	ITEM DESCRIPTION	UNIT	QUANTITY	UNIT COST	TOTAL COST
0101 1	MOBILIZATION	%	10%	\$205,561.00	\$20,556.10
0102 1	MAINTENANCE OF TRAFFIC	%	10%	\$226,117.10	\$22,611.71
0104 10 3	SEDIMENT BARRIER	LF	125	\$2.00	\$250.00
0104 18	INLET PROTECTION SYSTEM	EA	8	\$110.00	\$880.00
0110 1 1	CLEARING & GRUBBING	AC	0.30	\$32,000.00	\$9,600.00
0110 4 10	REMOVAL OF EXISTING CONCRETE	SY	240	\$25.00	\$6,000.00
0120 1	REGULAR EXCAVATION	CY	200	\$12.00	\$2,400.00
0160 4	TYPE B STABILIZATION	SY	240	\$8.00	\$1,920.00
0285709	OPTIONAL BASE, BASE GROUP 09	SY	240	\$31.00	\$7,440.00
0327 70 6	MILLING EXIST ASPH PAVT, 1 1/2" AVG DEPTH	SY	1200	\$3.00	\$3,600.00
0337 7 83	ASPHALT CONCRETE FRICTION COURSE, TRAFFIC C, FC-12.5, PG 76-22	TN	119	\$117.00	\$13,923.00
0425 5	MANHOLE, ADJUST	EA	2	\$700.00	\$1,400.00
0425 6	VALVE BOXES, ADJUST	EA	2	\$700.00	\$1,400.00
0520 70	CONCRETE TRAFFIC SEPARATOR, SPECIAL- VARIABLE WIDTH	SY	960	\$78.00	\$74,880.00
0522 2	CONCRETE SIDEWALK AND DRIVEWAYS, 6" THICK	SY	200	\$62.00	\$12,400.00
0527 2	DETECTABLE WARNINGS	SF	320	\$30.00	\$9,600.00
0700 1 11	SINGLE POST SIGN, F&I GROUND MOUNT, UP TO 12 SF	AS	4	\$375.00	\$1,500.00
0700 1 60	SINGLE POST SIGN, REMOVE	AS	4	\$45.00	\$180.00
0705 11 3	DELINEATOR, FLEXIBLE HIGH VISABILITY MEDIAN	EA	4	\$175.00	\$700.00
0706 1 1	RAISED PAVEMENT MARKER, TYPE B WITHOUT FINAL SURFACE MARKINGS	EA	80	\$9.00	\$720.00
0710 11190	PAINTED PAVEMENT MARKINGS, STANDARD, WHITE, ISLAND NOSE	SF	60	\$3.00	\$180.00
0711 11124	THERMOPLASTIC, STANDARD, WHITE, SOLID, 18" FOR DIAGONALS AND CHEVRONS	LF	160	\$4.00	\$640.00
0711 11170	THERMOPLASTIC, STANDARD, WHITE, ARROW	EA	4	\$65.00	\$260.00
0711 11123	THERMOPLASTIC, STANDARD, WHITE, SOLID, 12" FOR CROSSWALK AND ROUNDABOUT	LF	160	\$3.00	\$480.00
0711 14125	THERMOPLASTIC, PREFORMED, WHITE, SOLID, 24" FOR CROSSWALK	LF	160	\$15.00	\$2,400.00
0711 16101	THERMOPLASTIC, STANDARD-OTHER SURFACES, WHITE, SOLID, 6"	GM	0.16	\$4,200.00	\$672.00
0711 16201	THERMOPLASTIC, STANDARD-OTHER SURFACES, YELLOW, SOLID, 6"	GM	0.08	\$4,200.00	\$336.00
0630 2 11	CONDUIT, FURNISH & INSTALL, OPEN TRENCH	LF	200	\$10.00	\$2,000.00
0630 2 12	CONDUIT, FURNISH & INSTALL, DIRECTIONAL BORE	LF	400	\$27.50	\$11,000.00
0632 7 2	SIGNAL CABLE- REPAIR/REPLACE/OTHER, FURNISH & INSTALL	LF	600	\$6.00	\$3,600.00
0635 2 11	PULL & SPLICE BOX, F&I, 13" x 24" COVER SIZE	EA	12	\$800.00	\$9,600.00
0646 1 11	ALUMINUM SIGNALS POLE, PEDESTAL	EA	8	\$2,000.00	\$16,000.00
0646 1 60	ALUMINUM SIGNALS POLE, REMOVE	EA	4	\$250.00	\$1,000.00
0653 1 11	PEDESTRIAN SIGNAL, FURNISH & INSTALL LED COUNTDOWN, 1 WAY	AS	8	\$700.00	\$5,600.00
0665 1 11	PEDESTRIAN DETECTOR, FURNISH & INSTALL, STANDARD	EA	8	\$375.00	\$3,000.00
	PROJECT UNKNOWNNS	%	20%	\$248,728.81	\$49,745.76
Fowler - Channelized Islands			COMPONENT TOTAL		\$298,474.57

PLANNING LEVEL ESTIMATE DETAIL SHEET

USF Pine - R10-15MOD

PAY ITEM #	ITEM DESCRIPTION	UNIT	QUANTITY	UNIT COST	TOTAL COST
0101 1	MOBILIZATION	%	10%	\$1,500.00	\$150.00
0102 1	MAINTENANCE OF TRAFFIC	%	10%	\$1,650.00	\$165.00
0700 1 11	SINGLE POST SIGN, F&I GROUND MOUNT, UP TO 12 SF	AS	4	\$375.00	\$1,500.00
	PROJECT UNKNOWNNS	%	20%	\$1,815.00	\$363.00
USF Pine - R10-15MOD			COMPONENT TOTAL		\$2,178.00

PLANNING LEVEL ESTIMATE DETAIL SHEET

USF Pine - RTOR Blank Out

PAY ITEM #	ITEM DESCRIPTION	UNIT	QUANTITY	UNIT COST	TOTAL COST
0101 1	MOBILIZATION	%	10%	\$45,600.00	\$4,560.00
0102 1	MAINTENANCE OF TRAFFIC	%	10%	\$50,160.00	\$5,016.00
0630 2 11	CONDUIT, FURNISH & INSTALL, OPEN TRENCH	LF	150	\$10.00	\$1,500.00
0630 2 12	CONDUIT, FURNISH & INSTALL, DIRECTIONAL BORE	LF	400	\$27.50	\$11,000.00
0632 7 2	SIGNAL CABLE- REPAIR/REPLACE/OTHER, FURNISH & INSTALL	LF	550	\$6.00	\$3,300.00
0635 2 11	PULL & SPLICE BOX, F&I, 13" x 24" COVER SIZE	EA	6	\$800.00	\$4,800.00
0670 5400	TRAFFIC CONTROLLER ASSEMBLY, MODIFY	AS	1	\$2,000.00	\$2,000.00
0700 11391	ELECTRONIC DISPLAY SIGN, FURNISH & INSTALL OVERHEAD MOUNT- AC POWERED, BLANK OUT SIGN, UP TO 12 SF	AS	4	\$5,750.00	\$23,000.00
	PROJECT UNKNOWNNS	%	20%	\$55,176.00	\$11,035.20
USF Pine - RTOR Blank Out			COMPONENT TOTAL		\$66,211.20

PLANNING LEVEL ESTIMATE DETAIL SHEET

USF Pine - Drainage

PAY ITEM #	ITEM DESCRIPTION	UNIT	QUANTITY	UNIT COST	TOTAL COST
0101 1	MOBILIZATION	%	10%	\$73,680.00	\$7,368.00
0102 1	MAINTENANCE OF TRAFFIC	%	10%	\$81,048.00	\$8,104.80
0104 18	INLET PROTECTION SYSTEM	EA	8	\$110.00	\$880.00
0110 1 1	CLEARING & GRUBBING	AC	0.05	\$32,000.00	\$1,600.00
0425 1361	INLETS, CURB, TYPE P-6, <10'	EA	4	\$6,350.00	\$25,400.00
0430175118	PIPE CULVERT, OPTIONAL MATERIAL, ROUND, 18"S/CD	LF	300	\$78.00	\$23,400.00
0520 1 12	CONCRETE CURB & GUTTER, TYPE F WITH SPECIAL GUTTER PROFILE	LF	160	\$140.00	\$22,400.00
	PROJECT UNKNOWNNS	%	20%	\$89,152.80	\$17,830.56
USF Pine - Drainage			COMPONENT TOTAL		\$106,983.36

PLANNING LEVEL ESTIMATE DETAIL SHEET

USF Pine - Curb Ramps

PAY ITEM #	ITEM DESCRIPTION	UNIT	QUANTITY	UNIT COST	TOTAL COST
0101 1	MOBILIZATION	%	10%	\$16,225.00	\$1,622.50
0102 1	MAINTENANCE OF TRAFFIC	%	10%	\$17,847.50	\$1,784.75
0104 18	INLET PROTECTION SYSTEM	EA	2	\$110.00	\$220.00
0110 1 1	CLEARING & GRUBBING	AC	0.01	\$32,000.00	\$320.00
0110 4 10	REMOVAL OF EXISTING CONCRETE	SY	25	\$25.00	\$625.00
0520 1 10	CONCRETE CURB & GUTTER, TYPE F	LF	40	\$30.00	\$1,200.00
0522 2	CONCRETE SIDEWALK AND DRIVEWAYS, 6" THICK	SY	30	\$62.00	\$1,860.00
0527 2	DETECTABLE WARNINGS	SF	40	\$30.00	\$1,200.00
0630 2 11	CONDUIT, FURNISH & INSTALL, OPEN TRENCH	LF	50	\$10.00	\$500.00
0630 2 12	CONDUIT, FURNISH & INSTALL, DIRECTIONAL BORE	LF	100	\$27.50	\$2,750.00
0632 7 2	SIGNAL CABLE- REPAIR/REPLACE/OTHER, FURNISH & INSTALL	LF	150	\$9.00	\$1,350.00
0635 2 11	PULL & SPLICE BOX, F&I, 13" x 24" COVER SIZE	EA	4	\$800.00	\$3,200.00
0646 1 40	ALUMINUM SIGNALS POLE, RELOCATE	EA	2	\$1,500.00	\$3,000.00
	PROJECT UNKNOWNNS	%	20%	\$19,632.25	\$3,926.45
USF Pine - Curb Ramps			COMPONENT TOTAL		\$23,558.70

PLANNING LEVEL ESTIMATE DETAIL SHEET

Campus Hill - Sidestreet Narrow

PAY ITEM #	ITEM DESCRIPTION	UNIT	QUANTITY	UNIT COST	TOTAL COST
0101 1	MOBILIZATION	%	10%	\$38,216.30	\$3,821.63
0102 1	MAINTENANCE OF TRAFFIC	%	10%	\$42,037.93	\$4,203.79
0104 18	INLET PROTECTION SYSTEM	EA	2	\$110.00	\$220.00
0110 1 1	CLEARING & GRUBBING	AC	0.05	\$32,000.00	\$1,600.00
0110 4 10	REMOVAL OF EXISTING CONCRETE	SY	97	\$25.00	\$2,425.00
0120 6	EMBANKMENT	CY	34	\$10.00	\$340.00
0327 70 6	MILLING EXIST ASPH PAVT, 1 1/2" AVG DEPTH	SY	156	\$3.00	\$468.00
0337 7 83	ASPHALT CONCRETE FRICTION COURSE, TRAFFIC C, FC-12.5, PG 76-22	TN	12.9	\$117.00	\$1,509.30
0520 1 10	CONCRETE CURB & GUTTER, TYPE F	LF	100	\$30.00	\$3,000.00
0522 2	CONCRETE SIDEWALK AND DRIVEWAYS, 6" THICK	SY	210	\$62.00	\$13,020.00
0527 2	DETECTABLE WARNINGS	SF	60	\$30.00	\$1,800.00
0711 11123	THERMOPLASTIC, STANDARD, WHITE, SOLID, 12" FOR CROSSWALK AND ROUNDABOUT	LF	200	\$3.00	\$600.00
0711 14125	THERMOPLASTIC, PREFORMED, WHITE, SOLID, 24" FOR CROSSWALK	LF	200	\$15.00	\$3,000.00
0711 16101	THERMOPLASTIC, STANDARD-OTHER SURFACES, WHITE, SOLID, 6"	GM	0.02	\$4,200.00	\$84.00
0630 2 11	CONDUIT, FURNISH & INSTALL, OPEN TRENCH	LF	100	\$10.00	\$1,000.00
0632 7 2	SIGNAL CABLE- REPAIR/REPLACE/OTHER, FURNISH & INSTALL	LF	100	\$9.00	\$900.00
0635 2 11	PULL & SPLICE BOX, F&I, 13" x 24" COVER SIZE	EA	2	\$800.00	\$1,600.00
0646 1 11	ALUMINUM SIGNALS POLE, PEDESTAL	EA	2	\$2,000.00	\$4,000.00
0646 1 60	ALUMINUM SIGNALS POLE, REMOVE	EA	2	\$250.00	\$500.00
0653 1 11	PEDESTRIAN SIGNAL, FURNISH & INSTALL LED COUNTDOWN, 1 WAY	AS	2	\$700.00	\$1,400.00
0665 1 11	PEDESTRIAN DETECTOR, FURNISH & INSTALL, STANDARD	EA	2	\$375.00	\$750.00
	PROJECT UNKNOWNNS	%	20%	\$46,241.72	\$9,248.34
Campus Hill - Sidestreet Narrow			COMPONENT TOTAL		\$55,490.07

PLANNING LEVEL ESTIMATE DETAIL SHEET

N of Campus Hill - Ped Island

PAY ITEM #	ITEM DESCRIPTION	UNIT	QUANTITY	UNIT COST	TOTAL COST
0101 1	MOBILIZATION	%	10%	\$13,432.00	\$1,343.20
0102 1	MAINTENANCE OF TRAFFIC	%	10%	\$14,775.20	\$1,477.52
0104 18	INLET PROTECTION SYSTEM	EA	2	\$110.00	\$220.00
0110 1 1	CLEARING & GRUBBING	AC	0.05	\$32,000.00	\$1,600.00
0110 4 10	REMOVAL OF EXISTING CONCRETE	SY	4	\$25.00	\$100.00
0120 6	EMBANKMENT	CY	24	\$10.00	\$240.00
0520 1 10	CONCRETE CURB & GUTTER, TYPE F	LF	100	\$30.00	\$3,000.00
0522 2	CONCRETE SIDEWALK AND DRIVEWAYS, 6" THICK	SY	54	\$62.00	\$3,348.00
0527 2	DETECTABLE WARNINGS	SF	40	\$30.00	\$1,200.00
0570 1 2	PERFORMANCE TURF, SOD	SY	70	\$4.00	\$280.00
0711 11123	THERMOPLASTIC, STANDARD, WHITE, SOLID, 12" FOR CROSSWALK AND ROUNDABOUT	LF	160	\$6.00	\$960.00
0711 14125	THERMOPLASTIC, PREFORMED, WHITE, SOLID, 24" FOR CROSSWALK	LF	160	\$15.00	\$2,400.00
0711 16101	THERMOPLASTIC, STANDARD-OTHER SURFACES, WHITE, SOLID, 6"	GM	0.02	\$4,200.00	\$84.00
	PROJECT UNKNOWNNS	%	20%	\$16,252.72	\$3,250.54
N of Campus Hill - Ped Island			COMPONENT TOTAL		\$19,503.26

PLANNING LEVEL ESTIMATE DETAIL SHEET

USF Banyan Circle - Silt Mitigation

PAY ITEM #	ITEM DESCRIPTION	UNIT	QUANTITY	UNIT COST	TOTAL COST
0101 1	MOBILIZATION	%	10%	\$20,232.00	\$2,023.20
0102 1	MAINTENANCE OF TRAFFIC	%	10%	\$22,255.20	\$2,225.52
0110 1 1	CLEARING & GRUBBING	AC	0.04	\$32,000.00	\$1,280.00
0110 4 10	REMOVAL OF EXISTING CONCRETE	SY	184	\$25.00	\$4,600.00
0120 1	REGULAR EXCAVATION	CY	184	\$12.00	\$2,208.00
0522 2	CONCRETE SIDEWALK AND DRIVEWAYS, 6" THICK	SY	184	\$62.00	\$11,408.00
0570 1 2	PERFORMANCE TURF, SOD	SY	184	\$4.00	\$736.00
	PROJECT UNKNOWNNS	%	20%	\$24,480.72	\$4,896.14
USF Banyan Circle - Silt Mit			COMPONENT TOTAL		\$29,376.86

PLANNING LEVEL ESTIMATE DETAIL SHEET

Wells Fargo - Detectable Warnings

PAY ITEM #	ITEM DESCRIPTION	UNIT	QUANTITY	UNIT COST	TOTAL COST
0101 1	MOBILIZATION	%	10%	\$1,200.00	\$120.00
0102 1	MAINTENANCE OF TRAFFIC	%	10%	\$1,320.00	\$132.00
0527 2	DETECTABLE WARNINGS	SF	40	\$30.00	\$1,200.00
	PROJECT UNKNOWNNS	%	20%	\$1,452.00	\$290.40
Wells Fargo - Detect Warn			COMPONENT TOTAL		\$1,742.40

PLANNING LEVEL ESTIMATE DETAIL SHEET

Wells Fargo - Driveway Modification

PAY ITEM #	ITEM DESCRIPTION	UNIT	QUANTITY	UNIT COST	TOTAL COST
0101 1	MOBILIZATION	%	10%	\$24,272.60	\$2,427.26
0102 1	MAINTENANCE OF TRAFFIC	%	10%	\$26,699.86	\$2,669.99
0104 10 3	SEDIMENT BARRIER	LF	200	\$2.00	\$400.00
0104 18	INLET PROTECTION SYSTEM	EA	2	\$110.00	\$220.00
0110 1 1	CLEARING & GRUBBING	AC	0.10	\$32,000.00	\$3,200.00
0110 4 10	REMOVAL OF EXISTING CONCRETE	SY	73	\$25.00	\$1,825.00
0120 1	REGULAR EXCAVATION	CY	109	\$12.00	\$1,308.00
0120 6	EMBANKMENT	CY	15	\$10.00	\$150.00
0286 1	TURNOUT CONSTRUCTION/DRIVEWAY BASE- OPTIONAL MATERIALS	SY	130	\$33.00	\$4,290.00
0334 1 53	SUPERPAVE ASPHALTIC CONCRETE, TRAFFIC C, PG76-22	TN	10.8	\$105.00	\$1,134.00
0337 7 83	ASPHALT CONCRETE FRICTION COURSE, TRAFFIC C, FC-12.5, PG 76-22	TN	10.8	\$117.00	\$1,263.60
0520 1 10	CONCRETE CURB & GUTTER, TYPE F	LF	75	\$30.00	\$2,250.00
0522 2	CONCRETE SIDEWALK AND DRIVEWAYS, 6" THICK	SY	130	\$62.00	\$8,060.00
0711 11170	THERMOPLASTIC, STANDARD, WHITE, ARROW	EA	2	\$65.00	\$130.00
0711 16201	THERMOPLASTIC, STANDARD-OTHER SURFACES, YELLOW, SOLID, 6"	GM	0.01	\$4,200.00	\$42.00
	PROJECT UNKNOWNNS	%	20%	\$29,369.85	\$5,873.97
Wells Fargo - Driveway			COMPONENT TOTAL		\$35,243.82

PLANNING LEVEL ESTIMATE DETAIL SHEET

Fletcher - SE Crosswalk

PAY ITEM #	ITEM DESCRIPTION	UNIT	QUANTITY	UNIT COST	TOTAL COST
0101 1	MOBILIZATION	%	10%	\$22,371.30	\$2,237.13
0102 1	MAINTENANCE OF TRAFFIC	%	10%	\$24,608.43	\$2,460.84
0327 70 6	MILLING EXIST ASPH PAVT, 1 1/2" AVG DEPTH	SY	592	\$3.00	\$1,776.00
0337 7 83	ASPHALT CONCRETE FRICTION COURSE, TRAFFIC C, FC-12.5, PG 76-22	TN	48.9	\$117.00	\$5,721.30
0711 11123	THERMOPLASTIC, STANDARD, WHITE, SOLID, 12" FOR CROSSWALK AND ROUNDABOUT	LF	888	\$3.00	\$2,664.00
0711 14125	THERMOPLASTIC, PREFORMED, WHITE, SOLID, 24" FOR CROSSWALK	LF	814	\$15.00	\$12,210.00
	PROJECT UNKNOWNNS	%	20%	\$27,069.27	\$5,413.85
Fletcher - SE Crosswalk			COMPONENT TOTAL		\$32,483.13

PLANNING LEVEL ESTIMATE DETAIL SHEET

Fletcher - Detectable Warnings

PAY ITEM #	ITEM DESCRIPTION	UNIT	QUANTITY	UNIT COST	TOTAL COST
0101 1	MOBILIZATION	%	10%	\$1,200.00	\$120.00
0102 1	MAINTENANCE OF TRAFFIC	%	10%	\$1,320.00	\$132.00
0527 2	DETECTABLE WARNINGS	SF	40	\$30.00	\$1,200.00
	PROJECT UNKNOWNNS	%	20%	\$1,452.00	\$290.40
Fletcher - Detect Warn			COMPONENT TOTAL		\$1,742.40

PLANNING LEVEL ESTIMATE DETAIL SHEET

Fletcher - ADA Ped Buttons

PAY ITEM #	ITEM DESCRIPTION	UNIT	QUANTITY	UNIT COST	TOTAL COST
0101 1	MOBILIZATION	%	10%	\$64,789.00	\$6,478.90
0102 1	MAINTENANCE OF TRAFFIC	%	10%	\$71,267.90	\$7,126.79
0104 18	INLET PROTECTION SYSTEM	EA	8	\$110.00	\$880.00
0110 4 10	REMOVAL OF EXISTING CONCRETE	SY	107	\$25.00	\$2,675.00
0520 1 10	CONCRETE CURB & GUTTER, TYPE F	LF	160	\$30.00	\$4,800.00
0522 2	CONCRETE SIDEWALK AND DRIVEWAYS, 6" THICK	SY	107	\$62.00	\$6,634.00
0630 2 11	CONDUIT, FURNISH & INSTALL, OPEN TRENCH	LF	200	\$10.00	\$2,000.00
0630 2 12	CONDUIT, FURNISH & INSTALL, DIRECTIONAL BORE	LF	400	\$27.50	\$11,000.00
0632 7 2	SIGNAL CABLE- REPAIR/REPLACE/OTHER, FURNISH & INSTALL	LF	600	\$6.00	\$3,600.00
0635 2 11	PULL & SPLICE BOX, F&I, 13" x 24" COVER SIZE	EA	9	\$800.00	\$7,200.00
0646 1 11	ALUMINUM SIGNALS POLE, PEDESTAL	EA	8	\$2,000.00	\$16,000.00
0653 1 11	PEDESTRIAN SIGNAL, FURNISH & INSTALL LED COUNTDOWN, 1 WAY	AS	8	\$700.00	\$5,600.00
0653 1 60	PEDESTRIAN SIGNAL, REMOVE PED SIGNAL- POLE/PEDESTAL TO REMAIN	AS	8	\$100.00	\$800.00
0665 1 11	PEDESTRIAN DETECTOR, FURNISH & INSTALL, STANDARD	EA	8	\$375.00	\$3,000.00
0665 1 60	PEDESTRIAN DETECTOR, REMOVE- POLE/PEDESTAL TO REMAIN	EA	8	\$75.00	\$600.00
	PROJECT UNKNOWNNS	%	20%	\$78,394.69	\$15,678.94
Fletcher - ADA Ped Buttons			COMPONENT TOTAL		\$94,073.63

PLANNING LEVEL ESTIMATE DETAIL SHEET

Fletcher - Backplates

PAY ITEM #	ITEM DESCRIPTION	UNIT	QUANTITY	UNIT COST	TOTAL COST
0101 1	MOBILIZATION	%	10%	\$5,670.00	\$567.00
0102 1	MAINTENANCE OF TRAFFIC	%	10%	\$6,237.00	\$623.70
0650 2109	VEHICULAR SIGNAL AUXILIARIES, REPAIR/REPLACE/RETROFIT/FURNISH & INSTALL, BACKPLATE- FLEXIBLE REQUIRED	EA	18	\$315.00	\$5,670.00
	PROJECT UNKNOWNNS	%	20%	\$6,860.70	\$1,372.14
Fletcher - Signal Backp			COMPONENT TOTAL		\$8,232.84

PLANNING LEVEL ESTIMATE DETAIL SHEET

Fletcher - Bulb-out

PAY ITEM #	ITEM DESCRIPTION	UNIT	QUANTITY	UNIT COST	TOTAL COST
0101 1	MOBILIZATION	%	10%	\$38,684.30	\$3,868.43
0102 1	MAINTENANCE OF TRAFFIC	%	10%	\$42,552.73	\$4,255.27
0104 18	INLET PROTECTION SYSTEM	EA	2	\$110.00	\$220.00
0110 1 1	CLEARING & GRUBBING	AC	0.05	\$32,000.00	\$1,600.00
0110 4 10	REMOVAL OF EXISTING CONCRETE	SY	97	\$25.00	\$2,425.00
0120 1	REGULAR EXCAVATION	CY	89	\$12.00	\$1,068.00
0120 6	EMBANKMENT	CY	34	\$10.00	\$340.00
0327 70 6	MILLING EXIST ASPH PAVT, 1 1/2" AVG DEPTH	SY	156	\$3.00	\$468.00
0337 7 83	ASPHALT CONCRETE FRICTION COURSE, TRAFFIC C, FC-12.5, PG 76-22	TN	12.9	\$117.00	\$1,509.30
0520 1 10	CONCRETE CURB & GUTTER, TYPE F	LF	100	\$30.00	\$3,000.00
0522 2	CONCRETE SIDEWALK AND DRIVEWAYS, 6" THICK	SY	210	\$62.00	\$13,020.00
0527 2	DETECTABLE WARNINGS	SF	40	\$30.00	\$1,200.00
0711 11123	THERMOPLASTIC, STANDARD, WHITE, SOLID, 12" FOR CROSSWALK AND ROUNDABOUT	LF	200	\$3.00	\$600.00
0711 14125	THERMOPLASTIC, PREFORMED, WHITE, SOLID, 24" FOR CROSSWALK	LF	200	\$15.00	\$3,000.00
0711 16101	THERMOPLASTIC, STANDARD-OTHER SURFACES, WHITE, SOLID, 6"	GM	0.02	\$4,200.00	\$84.00
0630 2 11	CONDUIT, FURNISH & INSTALL, OPEN TRENCH	LF	100	\$10.00	\$1,000.00
0632 7 2	SIGNAL CABLE- REPAIR/REPLACE/OTHER, FURNISH & INSTALL	LF	100	\$9.00	\$900.00
0635 2 11	PULL & SPLICE BOX, F&I, 13" x 24" COVER SIZE	EA	2	\$800.00	\$1,600.00
0646 1 11	ALUMINUM SIGNALS POLE, PEDESTAL	EA	2	\$2,000.00	\$4,000.00
0646 1 60	ALUMINUM SIGNALS POLE, REMOVE	EA	2	\$250.00	\$500.00
0653 1 11	PEDESTRIAN SIGNAL, FURNISH & INSTALL LED COUNTDOWN, 1 WAY	AS	2	\$700.00	\$1,400.00
0665 1 11	PEDESTRIAN DETECTOR, FURNISH & INSTALL, STANDARD	EA	2	\$375.00	\$750.00
	PROJECT UNKNOWNNS	%	20%	\$46,808.00	\$9,361.60
Fletcher - Bulb-out			COMPONENT TOTAL		\$56,169.60

PLANNING LEVEL ESTIMATE DETAIL SHEET

Fletcher - ADA Ped Compliance

PAY ITEM #	ITEM DESCRIPTION	UNIT	QUANTITY	UNIT COST	TOTAL COST
0101 1	MOBILIZATION	%	10%	\$65,196.00	\$6,519.60
0102 1	MAINTENANCE OF TRAFFIC	%	10%	\$71,715.60	\$7,171.56
0104 18	INLET PROTECTION SYSTEM	EA	8	\$110.00	\$880.00
0110 4 10	REMOVAL OF EXISTING CONCRETE	SY	178	\$25.00	\$4,450.00
0520 1 10	CONCRETE CURB & GUTTER, TYPE F	LF	40	\$30.00	\$1,200.00
0522 2	CONCRETE SIDEWALK AND DRIVEWAYS, 6" THICK	SY	143	\$62.00	\$8,866.00
0630 2 11	CONDUIT, FURNISH & INSTALL, OPEN TRENCH	LF	200	\$10.00	\$2,000.00
0630 2 12	CONDUIT, FURNISH & INSTALL, DIRECTIONAL BORE	LF	400	\$27.50	\$11,000.00
0632 7 2	SIGNAL CABLE- REPAIR/REPLACE/OTHER, FURNISH & INSTALL	LF	600	\$6.00	\$3,600.00
0635 2 11	PULL & SPLICE BOX, F&I, 13" x 24" COVER SIZE	EA	9	\$800.00	\$7,200.00
0646 1 11	ALUMINUM SIGNALS POLE, PEDESTAL	EA	8	\$2,000.00	\$16,000.00
0653 1 11	PEDESTRIAN SIGNAL, FURNISH & INSTALL LED COUNTDOWN, 1 WAY	AS	8	\$700.00	\$5,600.00
0653 1 60	PEDESTRIAN SIGNAL, REMOVE PED SIGNAL- POLE/PEDESTAL TO REMAIN	AS	8	\$100.00	\$800.00
0665 1 11	PEDESTRIAN DETECTOR, FURNISH & INSTALL, STANDARD	EA	8	\$375.00	\$3,000.00
0665 1 60	PEDESTRIAN DETECTOR, REMOVE- POLE/PEDESTAL TO REMAIN	EA	8	\$75.00	\$600.00
	PROJECT UNKNOWNNS	%	20%	\$78,887.16	\$15,777.43
Fletcher - ADA Ped Compliance			COMPONENT TOTAL		\$94,664.59

PLANNING LEVEL ESTIMATE DETAIL SHEET

N of Fletcher - Pedestrian Crossing Signage

PAY ITEM #	ITEM DESCRIPTION	UNIT	QUANTITY	UNIT COST	TOTAL COST
0101 1	MOBILIZATION	%	10%	\$2,780.00	\$278.00
0102 1	MAINTENANCE OF TRAFFIC	%	10%	\$3,058.00	\$305.80
0700 1 11	SINGLE POST SIGN, F&I GROUND MOUNT, UP TO 12 SF	AS	4	\$375.00	\$1,500.00
0711 14160	THERMOPLASTIC, PREFORMED, WHITE, MESSAGE	EA	4	\$185.00	\$740.00
0711 14170	THERMOPLASTIC, PREFORMED, WHITE, ARROW	EA	4	\$135.00	\$540.00
	PROJECT UNKNOWNNS	%	20%	\$3,363.80	\$672.76
N of Fletcher - Ped Cross Signs			COMPONENT TOTAL		\$4,036.56

PLANNING LEVEL ESTIMATE DETAIL SHEET

Mission BBQ - Sidewalk Widening

PAY ITEM #	ITEM DESCRIPTION	UNIT	QUANTITY	UNIT COST	TOTAL COST
0101 1	MOBILIZATION	%	10%	\$805.00	\$80.50
0102 1	MAINTENANCE OF TRAFFIC	%	10%	\$885.50	\$88.55
0104 10 3	SEDIMENT BARRIER	LF	30	\$2.00	\$60.00
0110 4 10	REMOVAL OF EXISTING CONCRETE	SY	7	\$25.00	\$175.00
0120 1	REGULAR EXCAVATION	CY	1	\$12.00	\$12.00
0522 2	CONCRETE SIDEWALK AND DRIVEWAYS, 6" THICK	SY	9	\$62.00	\$558.00
	PROJECT UNKNOWNNS	%	20%	\$974.05	\$194.81
Mission BBQ - Sidewalk Widening			COMPONENT TOTAL		\$1,168.86

PLANNING LEVEL ESTIMATE DETAIL SHEET

138th - SE Crosswalk

PAY ITEM #	ITEM DESCRIPTION	UNIT	QUANTITY	UNIT COST	TOTAL COST
0101 1	MOBILIZATION	%	10%	\$10,575.00	\$1,057.50
0102 1	MAINTENANCE OF TRAFFIC	%	10%	\$11,632.50	\$1,163.25
0327 70 6	MILLING EXIST ASPH PAVT, 1 1/2" AVG DEPTH	SY	267	\$3.00	\$801.00
0337 7 83	ASPHALT CONCRETE FRICTION COURSE, TRAFFIC C, FC-12.5, PG 76-22	TN	22	\$117.00	\$2,574.00
0711 11123	THERMOPLASTIC, STANDARD, WHITE, SOLID, 12" FOR CROSSWALK AND ROUNDABOUT	LF	400	\$3.00	\$1,200.00
0711 14125	THERMOPLASTIC, PREFORMED, WHITE, SOLID, 24" FOR CROSSWALK	LF	400	\$15.00	\$6,000.00
	PROJECT UNKNOWNNS	%	20%	\$12,795.75	\$2,559.15
138th - SE Crosswalk			COMPONENT TOTAL		\$15,354.90

PLANNING LEVEL ESTIMATE DETAIL SHEET

138th - South Leg Ped Features

PAY ITEM #	ITEM DESCRIPTION	UNIT	QUANTITY	UNIT COST	TOTAL COST
0101 1	MOBILIZATION	%	10%	\$88,534.00	\$8,853.40
0102 1	MAINTENANCE OF TRAFFIC	%	10%	\$97,387.40	\$9,738.74
0104 10 3	SEDIMENT BARRIER	LF	32	\$2.00	\$64.00
0104 18	INLET PROTECTION SYSTEM	EA	2	\$110.00	\$220.00
0110 1 1	CLEARING & GRUBBING	AC	0.10	\$32,000.00	\$3,200.00
0110 4 10	REMOVAL OF EXISTING CONCRETE	SY	50	\$25.00	\$1,250.00
0120 6	EMBANKMENT	CY	556	\$10.00	\$5,560.00
0160 4	TYPE B STABILIZATION	SY	15	\$8.00	\$120.00
0285709	OPTIONAL BASE, BASE GROUP 09	SY	15	\$31.00	\$465.00
0327 70 6	MILLING EXIST ASPH PAVT, 1 1/2" AVG DEPTH	SY	334	\$3.00	\$1,002.00
0337 7 83	ASPHALT CONCRETE FRICTION COURSE, TRAFFIC C, FC-12.5, PG 76-22	TN	29	\$117.00	\$3,393.00
0520 70	CONCRETE TRAFFIC SEPARATOR, SPECIAL- VARIABLE WIDTH	SY	100	\$200.00	\$20,000.00
0425 1561	INLETS, DT BOT, TYPE F, <10'	EA	1	\$6,000.00	\$6,000.00
0430175148	PIPE CULVERT, OPT MATERIAL, ROUND, 48"S/CD	LF	20	\$140.00	\$2,800.00
0430982141	MITERED END SECTION, OPTIONAL ROUND, 48" CD	EA	2	\$4,000.00	\$8,000.00
0520 1 10	CONCRETE CURB & GUTTER, TYPE F	LF	60	\$30.00	\$1,800.00
0520 70	CONCRETE TRAFFIC SEPARATOR, SPECIAL- VARIABLE WIDTH	SY	15	\$78.00	\$1,170.00
0522 2	CONCRETE SIDEWALK AND DRIVEWAYS, 6" THICK	SY	80	\$62.00	\$4,960.00
0527 2	DETECTABLE WARNINGS	SF	80	\$30.00	\$2,400.00
0700 1 11	SINGLE POST SIGN, F&I GROUND MOUNT, UP TO 12 SF	AS	1	\$375.00	\$375.00
0710 11290	PAINTED PAVEMENT MARKINGS, STANDARD, YELLOW, ISLAND NOSE	SF	10	\$3.00	\$30.00
0711 11125	THERMOPLASTIC, STANDARD, WHITE, SOLID, 24" FOR STOP LINE AND CROSSWALK	LF	60	\$5.00	\$300.00
0711 11170	THERMOPLASTIC, STANDARD, WHITE, ARROW	EA	2	\$65.00	\$130.00
0711 11123	THERMOPLASTIC, STANDARD, WHITE, SOLID, 12" FOR CROSSWALK AND ROUNDABOUT	LF	240	\$3.00	\$720.00
0711 14125	THERMOPLASTIC, PREFORMED, WHITE, SOLID, 24" FOR CROSSWALK	LF	240	\$15.00	\$3,600.00
0630 2 11	CONDUIT, FURNISH & INSTALL, OPEN TRENCH	LF	100	\$10.00	\$1,000.00
0630 2 12	CONDUIT, FURNISH & INSTALL, DIRECTIONAL BORE	LF	200	\$27.50	\$5,500.00
0632 7 2	SIGNAL CABLE- REPAIR/REPLACE/OTHER, FURNISH & INSTALL	LF	300	\$6.00	\$1,800.00
0635 2 11	PULL & SPLICE BOX, F&I, 13" x 24" COVER SIZE	EA	4	\$800.00	\$3,200.00
0646 1 11	ALUMINUM SIGNALS POLE, PEDESTAL	EA	3	\$2,000.00	\$6,000.00
0646 1 60	ALUMINUM SIGNALS POLE, REMOVE	EA	1	\$250.00	\$250.00
0653 1 11	PEDESTRIAN SIGNAL, FURNISH & INSTALL LED COUNTDOWN, 1 WAY	AS	3	\$700.00	\$2,100.00
0665 1 11	PEDESTRIAN DETECTOR, FURNISH & INSTALL, STANDARD	EA	3	\$375.00	\$1,125.00
	PROJECT UNKNOWNNS	%	20%	\$107,126.14	\$21,425.23
138th - South Leg Ped Features			COMPONENT TOTAL		\$128,551.37

PLANNING LEVEL ESTIMATE DETAIL SHEET

138th - Southwest Drainage

PAY ITEM #	ITEM DESCRIPTION	UNIT	QUANTITY	UNIT COST	TOTAL COST
0101 1	MOBILIZATION	%	10%	\$20,239.00	\$2,023.90
0102 1	MAINTENANCE OF TRAFFIC	%	10%	\$22,262.90	\$2,226.29
0104 10 3	SEDIMENT BARRIER	LF	200	\$2.00	\$400.00
0110 1 1	CLEARING & GRUBBING	AC	0.10	\$32,000.00	\$3,200.00
0327 70 6	MILLING EXIST ASPH PAVT, 1 1/2" AVG DEPTH	SY	167	\$3.00	\$501.00
0337 7 83	ASPHALT CONCRETE FRICTION COURSE, TRAFFIC C, FC-12.5, PG 76-22	TN	14	\$117.00	\$1,638.00
0425 1910	INLETS, CLOSED FLUME	EA	2	\$5,000.00	\$10,000.00
0520 1 10	CONCRETE CURB & GUTTER, TYPE F	LF	150	\$30.00	\$4,500.00
	PROJECT UNKNOWNNS	%	20%	\$24,489.19	\$4,897.84
138th - Southwest Drainage			COMPONENT TOTAL		\$29,387.03

PLANNING LEVEL ESTIMATE DETAIL SHEET

138 to Bearss - Crossing By Rd

PAY ITEM #	ITEM DESCRIPTION	UNIT	QUANTITY	UNIT COST	TOTAL COST
0101 1	MOBILIZATION	%	10%	\$249,131.20	\$24,913.12
0102 1	MAINTENANCE OF TRAFFIC	%	10%	\$274,044.32	\$27,404.43
0104 10 3	SEDIMENT BARRIER	LF	1440	\$2.00	\$2,880.00
0110 1 1	CLEARING & GRUBBING	AC	0.70	\$32,000.00	\$22,400.00
0110 4 10	REMOVAL OF EXISTING CONCRETE	SY	800	\$25.00	\$20,000.00
0120 1	REGULAR EXCAVATION	CY	178	\$12.00	\$2,136.00
0120 6	EMBANKMENT	CY	3200	\$10.00	\$32,000.00
0327 70 6	MILLING EXIST ASPH PAVT, 1 1/2" AVG DEPTH	SY	480	\$3.00	\$1,440.00
0337 7 83	ASPHALT CONCRETE FRICTION COURSE,TRAFFIC C, FC-12.5, PG 76-22	TN	39.6	\$117.00	\$4,633.20
0430175148	PIPE CULVERT, OPT MATERIAL, ROUND, 48"S/CD	LF	20	\$140.00	\$2,800.00
0430982141	MITERED END SECTION, OPTIONAL ROUND, 48" CD	EA	12	\$4,000.00	\$48,000.00
0522 2	CONCRETE SIDEWALK AND DRIVEWAYS, 6" THICK	SY	1067	\$62.00	\$66,154.00
0527 2	DETECTABLE WARNINGS	SF	480	\$30.00	\$14,400.00
0570 1 2	PERFORMANCE TURF, SOD	SY	3200	\$4.00	\$12,800.00
0700 1 11	SINGLE POST SIGN, F&I GROUND MOUNT, UP TO 12 SF	AS	12	\$375.00	\$4,500.00
0700 1 60	SINGLE POST SIGN, REMOVE	AS	12	\$45.00	\$540.00
0711 11125	THERMOPLASTIC, STANDARD, WHITE, SOLID, 24" FOR STOP LINE AND CROSSWALK	LF	180	\$5.00	\$900.00
0711 11123	THERMOPLASTIC, STANDARD, WHITE, SOLID, 12" FOR CROSSWALK AND ROUNDABOUT	LF	720	\$3.00	\$2,160.00
0711 14125	THERMOPLASTIC, PREFORMED, WHITE, SOLID, 24" FOR CROSSWALK	LF	720	\$15.00	\$10,800.00
0711 16101	THERMOPLASTIC, STANDARD-OTHER SURFACES, WHITE, SOLID, 6"	GM	0.14	\$4,200.00	\$588.00
	PROJECT UNKNOWNNS	%	20%	\$301,448.75	\$60,289.75
138 to Bearss - Crossing By Rd			COMPONENT TOTAL		\$361,738.50

PLANNING LEVEL ESTIMATE DETAIL SHEET

Barnhard Dr - Midblock Crossing

PAY ITEM #	ITEM DESCRIPTION	UNIT	QUANTITY	UNIT COST	TOTAL COST
0101 1	MOBILIZATION	%	10%	\$311,215.50	\$31,121.55
0102 1	MAINTENANCE OF TRAFFIC	%	10%	\$342,337.05	\$34,233.71
0104 10 3	SEDIMENT BARRIER	LF	300	\$2.00	\$600.00
0110 1 1	CLEARING & GRUBBING	AC	0.10	\$32,000.00	\$3,200.00
0110 4 10	REMOVAL OF EXISTING CONCRETE	SY	18	\$25.00	\$450.00
0120 1	REGULAR EXCAVATION	CY	45	\$12.00	\$540.00
0327 70 6	MILLING EXIST ASPH PAVT, 1 1/2" AVG DEPTH	SY	1200	\$3.00	\$3,600.00
0337 7 83	ASPHALT CONCRETE FRICTION COURSE, TRAFFIC C, FC-12.5, PG 76-22	TN	99.0	\$117.00	\$11,583.00
0520 1 10	CONCRETE CURB & GUTTER, TYPE F	LF	40	\$30.00	\$1,200.00
0522 2	CONCRETE SIDEWALK AND DRIVEWAYS, 6" THICK	SY	45	\$62.00	\$2,790.00
0527 2	DETECTABLE WARNINGS	SF	80	\$30.00	\$2,400.00
0570 1 2	PERFORMANCE TURF, SOD	SY	45	\$4.00	\$180.00
0700 1 11	SINGLE POST SIGN, F&I GROUND MOUNT, UP TO 12 SF	AS	4	\$375.00	\$1,500.00
0706 1 1	RAISED PAVEMENT MARKER, TYPE B WITHOUT FINAL SURFACE MARKINGS	EA	30	\$9.00	\$270.00
0711 11125	THERMOPLASTIC, STANDARD, WHITE, SOLID, 24" FOR STOP LINE AND CROSSWALK	LF	90	\$5.00	\$450.00
0711 11160	THERMOPLASTIC, STANDARD, WHITE, MESSAGE OR SYMBOL	EA	12	\$125.00	\$1,500.00
0711 11123	THERMOPLASTIC, STANDARD, WHITE, SOLID, 12" FOR CROSSWALK AND ROUNDABOUT	LF	180	\$3.00	\$540.00
0711 14125	THERMOPLASTIC, PREFORMED, WHITE, SOLID, 24" FOR CROSSWALK	LF	180	\$15.00	\$2,700.00
0711 16101	THERMOPLASTIC, STANDARD-OTHER SURFACES, WHITE, SOLID, 6"	GM	1.00	\$4,200.00	\$4,200.00
0630 2 11	CONDUIT, FURNISH & INSTALL, OPEN TRENCH	LF	50	\$10.00	\$500.00
0630 2 12	CONDUIT, FURNISH & INSTALL, DIRECTIONAL BORE	LF	150	\$27.50	\$4,125.00
0632 7 1	SIGNAL CABLE- NEW OR RECONSTRUCTED INTERSECTION, FURNISH & INSTALL	PI	1	\$7,000.00	\$7,000.00
0635 2 11	PULL & SPLICE BOX, F&I, 13" x 24" COVER SIZE	EA	15	\$800.00	\$12,000.00
0639 1112	ELECTRICAL POWER SERVICE, F&I, OVERHEAD METER PURCHASED BY CONTRACTOR FROM POWER COMPANY	AS	1	\$3,250.00	\$3,250.00
0639 2 1	ELECTRICAL SERVICE WIRE, FURNISH & INSTALL	LF	50	\$6.75	\$337.50
0641 2 12	PRESTRESSED CONCRETE POLE, F&I, TYPE P-II SERVICE POLE	EA	1	\$1,700.00	\$1,700.00
0646 1 11	ALUMINUM SIGNALS POLE, PEDESTAL	EA	4	\$2,000.00	\$8,000.00
0649 21 15	STEEL MAST ARM ASSEMBLY, FURNISH AND INSTALL, SINGLE ARM 70'	EA	2	\$60,000.00	\$120,000.00
0653 1 11	PEDESTRIAN SIGNAL, FURNISH & INSTALL LED COUNTDOWN, 1 WAY	AS	4	\$700.00	\$2,800.00
0654 3 10	PEDESTRIAN HYBRID BEACON ASSEMBLY, FURNISH & INSTALL COMPLETE ASSEMBLY	AS	8	\$1,350.00	\$10,800.00
0665 1 11	PEDESTRIAN DETECTOR, FURNISH & INSTALL, STANDARD	EA	4	\$375.00	\$1,500.00
0670 5110	TRAFFIC CONTROLLER ASSEMBLY, F&I, NEMA	AS	1	\$35,000.00	\$35,000.00
0684 1 1	MANAGED FIELD ETHERNET SWITCH, FURNISH & INSTALL	EA	1	\$4,000.00	\$4,000.00
0715 1 12	LIGHTING CONDUCTORS, F&I, INSULATED, NO.8 - 6	LF	500	\$5.00	\$2,500.00
0715 4 13	LIGHT POLE COMPLETE, FURNISH & INSTALL STANDARD POLE STANDARD FOUNDATION, 40' MOUNTING HEIGHT	EA	4	\$8,000.00	\$32,000.00
0715 7 11	LOAD CENTER, F&I, SECONDARY VOLTAGE	EA	1	\$25,000.00	\$25,000.00
0715500 1	POLE CABLE DISTRIBUTION SYSTEM, FURNISH AND INSTALL, CONVENTIONAL	EA	4	\$750.00	\$3,000.00
	PROJECT UNKNOWNNS	%	20%	\$376,570.76	\$75,314.15
Barnhard Dr - Midblock Crossing			COMPONENT TOTAL		\$451,884.91

PLANNING LEVEL ESTIMATE DETAIL SHEET

Grand Pavilion Drive - Drainage

PAY ITEM #	ITEM DESCRIPTION	UNIT	QUANTITY	UNIT COST	TOTAL COST
0101 1	MOBILIZATION	%	10%	\$37,188.40	\$3,718.84
0102 1	MAINTENANCE OF TRAFFIC	%	10%	\$40,907.24	\$4,090.72
0104 10 3	SEDIMENT BARRIER	LF	32	\$2.00	\$64.00
0110 1 1	CLEARING & GRUBBING	AC	0.10	\$32,000.00	\$3,200.00
0110 4 10	REMOVAL OF EXISTING CONCRETE	SY	23	\$25.00	\$575.00
0120 1	REGULAR EXCAVATION	CY	230	\$12.00	\$2,760.00
0160 4	TYPE B STABILIZATION	SY	275	\$8.00	\$2,200.00
0285709	OPTIONAL BASE, BASE GROUP 09	SY	275	\$31.00	\$8,525.00
0327 70 6	MILLING EXIST ASPH PAVT, 1 1/2" AVG DEPTH	SY	275	\$3.00	\$825.00
0334 1 53	SUPERPAVE ASPHALTIC CONCRETE, TRAFFIC C, PG76-22	TN	22.7	\$105.00	\$2,383.50
0337 7 83	ASPHALT CONCRETE FRICTION COURSE, TRAFFIC C, FC-12.5, PG 76-22	TN	23	\$117.00	\$2,655.90
0520 1 12	CONCRETE CURB & GUTTER, TYPE F WITH SPECIAL GUTTER PROFILE	LF	100	\$140.00	\$14,000.00
	PROJECT UNKNOWNNS	%	20%	\$44,997.96	\$8,999.59
Grand Pavilion Drive - Drainage			COMPONENT TOTAL		\$53,997.56

PLANNING LEVEL ESTIMATE DETAIL SHEET

S of Bearss - Handrail

PAY ITEM #	ITEM DESCRIPTION	UNIT	QUANTITY	UNIT COST	TOTAL COST
0101 1	MOBILIZATION	%	10%	\$1,750.00	\$175.00
0102 1	MAINTENANCE OF TRAFFIC	%	10%	\$1,925.00	\$192.50
0515 1 2	PIPE HANDRAIL - GUIDERAIL, ALUMINUM	LF	25	\$70.00	\$1,750.00
	PROJECT UNKNOWNNS	%	20%	\$2,117.50	\$423.50
S of Bearss - Handrail			COMPONENT TOTAL		\$2,541.00

PLANNING LEVEL ESTIMATE DETAIL SHEET

Bearss - Right Turn Beacon Xing

PAY ITEM #	ITEM DESCRIPTION	UNIT	QUANTITY	UNIT COST	TOTAL COST
0101 1	MOBILIZATION	%	10%	\$57,900.00	\$5,790.00
0102 1	MAINTENANCE OF TRAFFIC	%	10%	\$63,690.00	\$6,369.00
0630 2 11	CONDUIT, FURNISH & INSTALL, OPEN TRENCH	LF	200	\$10.00	\$2,000.00
0630 2 12	CONDUIT, FURNISH & INSTALL, DIRECTIONAL BORE	LF	300	\$27.50	\$8,250.00
0632 7 2	SIGNAL CABLE- REPAIR/REPLACE/OTHER, FURNISH & INSTALL	LF	500	\$9.00	\$4,500.00
0635 2 11	PULL & SPLICE BOX, F&I, 13" x 24" COVER SIZE	EA	10	\$800.00	\$8,000.00
0670 5400	TRAFFIC CONTROLLER ASSEMBLY, MODIFY	AS	1	\$2,000.00	\$2,000.00
0700 1 11	SINGLE POST SIGN, F&I GROUND MOUNT, UP TO 12 SF	AS	6	\$375.00	\$2,250.00
0700 12 11	SIGN BEACON, F&I GROUND MOUNT- AC POWERED, ONE BEACON	AS	6	\$5,150.00	\$30,900.00
	PROJECT UNKNOWNNS	%	20%	\$70,059.00	\$14,011.80
Bearss - Right Turn Beacon Xing			COMPONENT TOTAL		\$84,070.80

PLANNING LEVEL ESTIMATE DETAIL SHEET

Bearss - NW Sidewalk Connection

PAY ITEM #	ITEM DESCRIPTION	UNIT	QUANTITY	UNIT COST	TOTAL COST
0101 1	MOBILIZATION	%	10%	\$113,957.00	\$11,395.70
0102 1	MAINTENANCE OF TRAFFIC	%	10%	\$125,352.70	\$12,535.27
0104 10 3	SEDIMENT BARRIER	LF	300	\$2.00	\$600.00
0110 1 1	CLEARING & GRUBBING	AC	1.11	\$32,000.00	\$35,520.00
0110 4 10	REMOVAL OF EXISTING CONCRETE	SY	5	\$25.00	\$125.00
0120 1	REGULAR EXCAVATION	CY	223	\$12.00	\$2,676.00
0120 6	EMBANKMENT	CY	1361	\$10.00	\$13,610.00
0430175130	PIPE CULVERT, OPT MATERIAL, ROUND, 30"S/CD	LF	20	\$120.00	\$2,400.00
0430982133	MITERED END SECTION, OPTIONAL ROUND, 30" CD	EA	2	\$4,000.00	\$8,000.00
0522 2	CONCRETE SIDEWALK AND DRIVEWAYS, 6" THICK	SY	445	\$62.00	\$27,590.00
0527 2	DETECTABLE WARNINGS	SF	20	\$30.00	\$600.00
0550 10220	FENCING, TYPE B, 5.1-6.0', STANDARD	LF	750	\$20.00	\$15,000.00
0550 60222	FENCE GATE, TYPE B, DOUBLE, 6.1-12.0' OPENING	EA	2	\$1,250.00	\$2,500.00
0570 1 2	PERFORMANCE TURF, SOD	SY	1334	\$4.00	\$5,336.00
	PROJECT UNKNOWNNS	%	20%	\$137,887.97	\$27,577.59
Bearss - NW Sidewalk Connection			COMPONENT TOTAL		\$165,465.56

PLANNING LEVEL ESTIMATE DETAIL SHEET

Bearss - Right Turn Lane Align

PAY ITEM #	ITEM DESCRIPTION	UNIT	QUANTITY	UNIT COST	TOTAL COST
0101 1	MOBILIZATION	%	10%	\$103,234.00	\$10,323.40
0102 1	MAINTENANCE OF TRAFFIC	%	10%	\$113,557.40	\$11,355.74
0104 10 3	SEDIMENT BARRIER	LF	400	\$2.00	\$800.00
0110 1 1	CLEARING & GRUBBING	AC	0.20	\$32,000.00	\$6,400.00
0110 4 10	REMOVAL OF EXISTING CONCRETE	SY	120	\$25.00	\$3,000.00
0120 1	REGULAR EXCAVATION	CY	100	\$12.00	\$1,200.00
0160 4	TYPE B STABILIZATION	SY	120	\$8.00	\$960.00
0285709	OPTIONAL BASE, BASE GROUP 09	SY	120	\$31.00	\$3,720.00
0327 70 6	MILLING EXIST ASPH PAVT, 1 1/2" AVG DEPTH	SY	600	\$3.00	\$1,800.00
0337 7 83	ASPHALT CONCRETE FRICTION COURSE, TRAFFIC C, FC-12.5, PG 76-22	TN	60	\$117.00	\$7,020.00
0520 70	CONCRETE TRAFFIC SEPARATOR, SPECIAL- VARIABLE WIDTH	SY	400	\$78.00	\$31,200.00
0522 2	CONCRETE SIDEWALK AND DRIVEWAYS, 6" THICK	SY	200	\$62.00	\$12,400.00
0527 2	DETECTABLE WARNINGS	SF	160	\$30.00	\$4,800.00
0700 1 11	SINGLE POST SIGN, F&I GROUND MOUNT, UP TO 12 SF	AS	2	\$375.00	\$750.00
0700 1 60	SINGLE POST SIGN, REMOVE	AS	2	\$45.00	\$90.00
0705 11 3	DELINEATOR, FLEXIBLE HIGH VISIBILITY MEDIAN	EA	2	\$175.00	\$350.00
0706 1 1	RAISED PAVEMENT MARKER, TYPE B WITHOUT FINAL SURFACE MARKINGS	EA	40	\$9.00	\$360.00
0710 11190	PAINTED PAVEMENT MARKINGS, STANDARD, WHITE, ISLAND NOSE	SF	30	\$3.00	\$90.00
0711 11124	THERMOPLASTIC, STANDARD, WHITE, SOLID, 18" FOR DIAGONALS AND CHEVRONS	LF	80	\$4.00	\$320.00
0711 11170	THERMOPLASTIC, STANDARD, WHITE, ARROW	EA	2	\$65.00	\$130.00
0711 11123	THERMOPLASTIC, STANDARD, WHITE, SOLID, 12" FOR CROSSWALK AND ROUNDABOUT	LF	80	\$3.00	\$240.00
0711 14125	THERMOPLASTIC, PREFORMED, WHITE, SOLID, 24" FOR CROSSWALK	LF	80	\$15.00	\$1,200.00
0711 16101	THERMOPLASTIC, STANDARD-OTHER SURFACES, WHITE, SOLID, 6"	GM	0.08	\$4,200.00	\$336.00
0711 16201	THERMOPLASTIC, STANDARD-OTHER SURFACES, YELLOW, SOLID, 6"	GM	0.04	\$4,200.00	\$168.00
0630 2 11	CONDUIT, FURNISH & INSTALL, OPEN TRENCH	LF	100	\$10.00	\$1,000.00
0630 2 12	CONDUIT, FURNISH & INSTALL, DIRECTIONAL BORE	LF	200	\$27.50	\$5,500.00
0632 7 2	SIGNAL CABLE- REPAIR/REPLACE/OTHER, FURNISH & INSTALL	LF	300	\$6.00	\$1,800.00
0635 2 11	PULL & SPLICE BOX, F&I, 13" x 24" COVER SIZE	EA	6	\$800.00	\$4,800.00
0646 1 11	ALUMINUM SIGNALS POLE, PEDESTAL	EA	4	\$2,000.00	\$8,000.00
0646 1 60	ALUMINUM SIGNALS POLE, REMOVE	EA	2	\$250.00	\$500.00
0653 1 11	PEDESTRIAN SIGNAL, FURNISH & INSTALL LED COUNTDOWN, 1 WAY	AS	4	\$700.00	\$2,800.00
0665 1 11	PEDESTRIAN DETECTOR, FURNISH & INSTALL, STANDARD	EA	4	\$375.00	\$1,500.00
	PROJECT UNKNOWNNS	%	20%	\$124,913.14	\$24,982.63
Bearss - Right Turn Lane Align			COMPONENT TOTAL		\$149,895.77