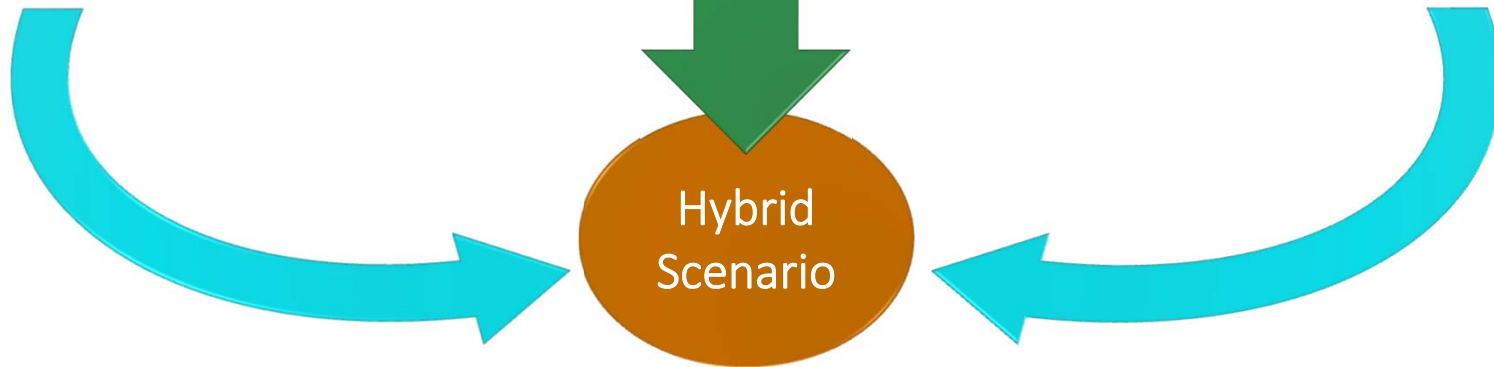
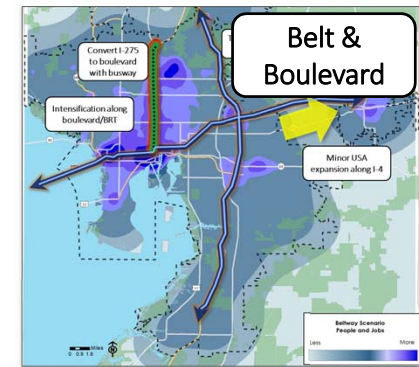
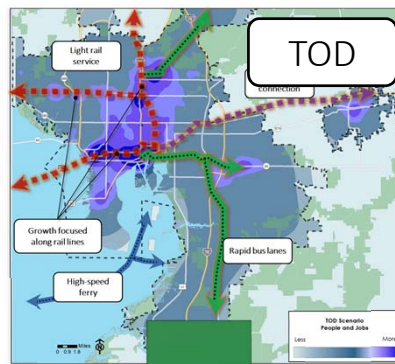
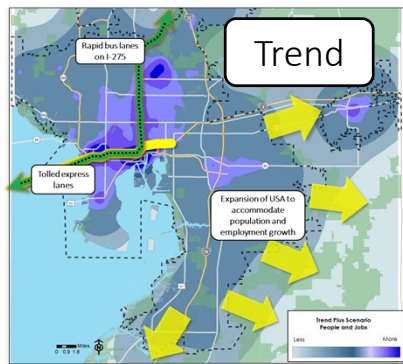


# Hybrid Scenario

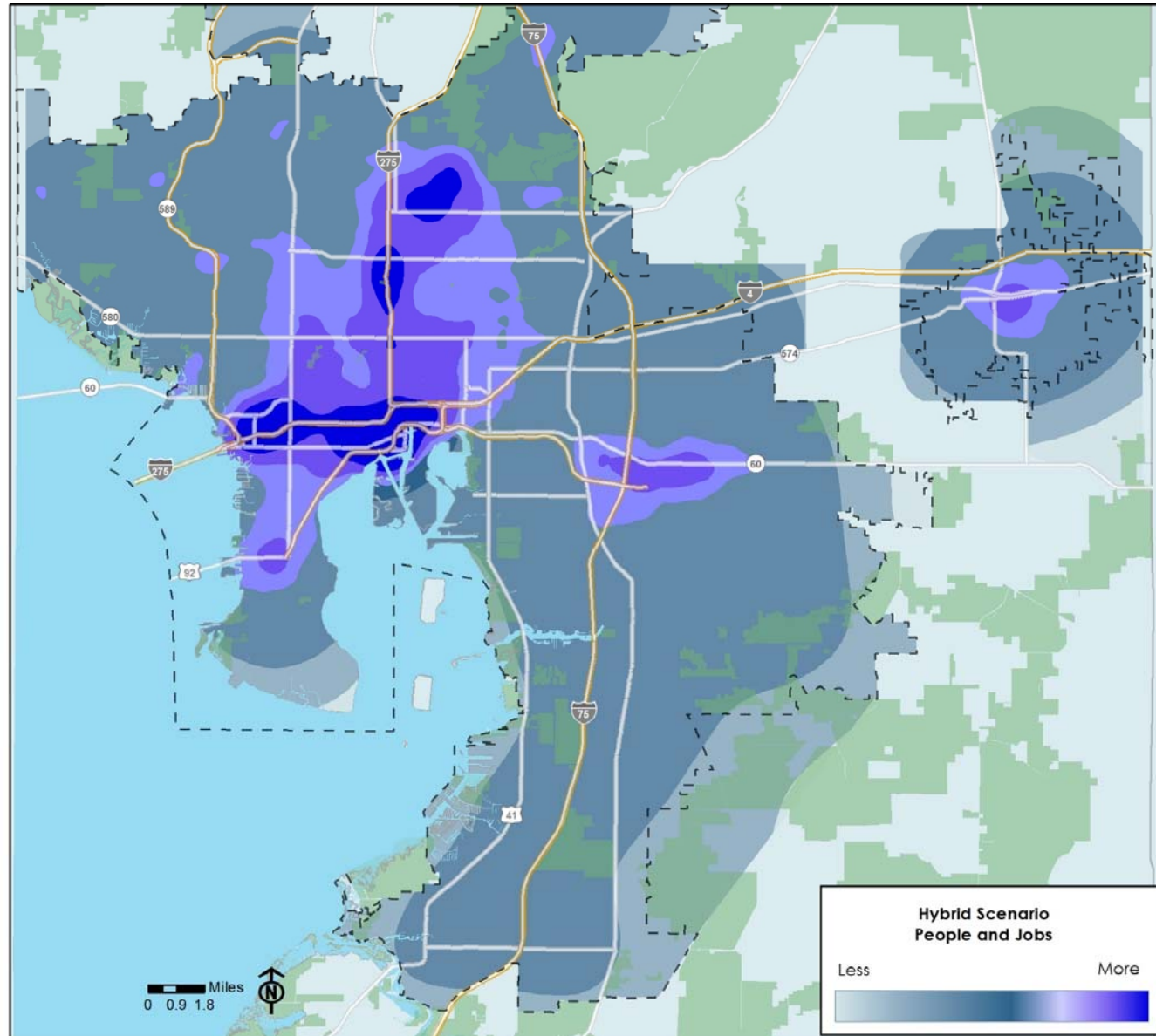
Planning Commission  
Shawn College, AICP

January 14, 2019



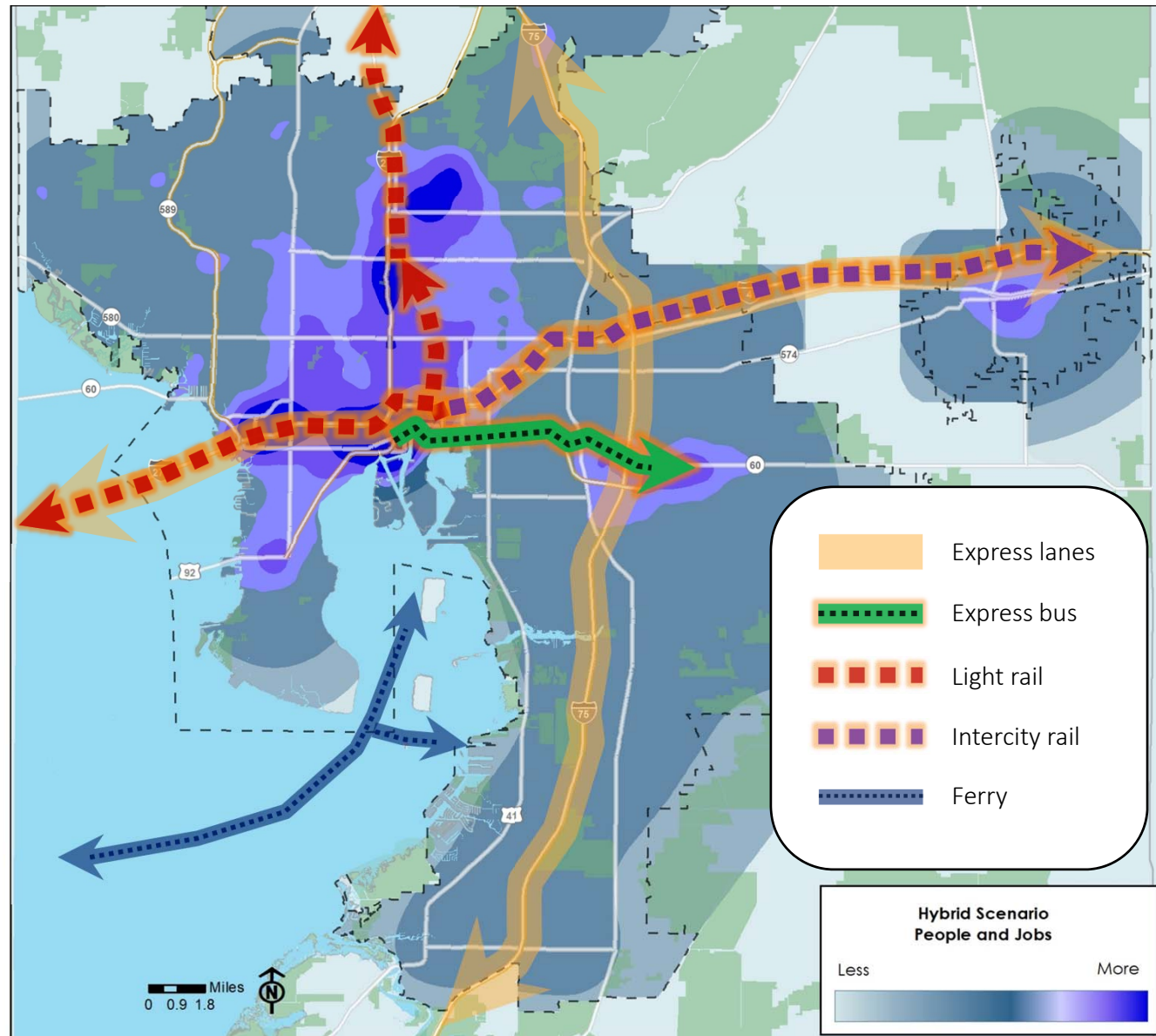
# Hybrid Scenario

- Builds on TOD Scenario
- Includes elements of Trend and Belt & Boulevard Scenarios
- Eliminates rail along Linebaugh Avenue and South Tampa

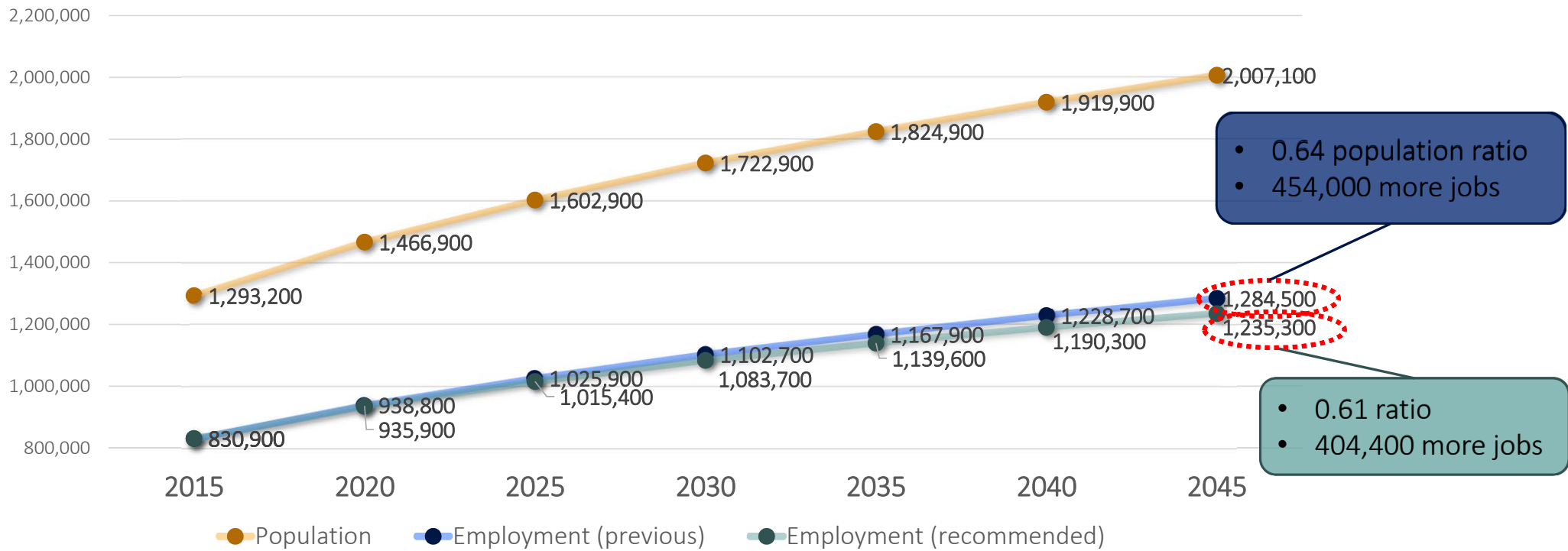


# Hybrid Scenario

- Builds on TOD Scenario
- Includes elements of Trend and Belt & Boulevard Scenarios
- Eliminates rail along Linebaugh Avenue and South Tampa



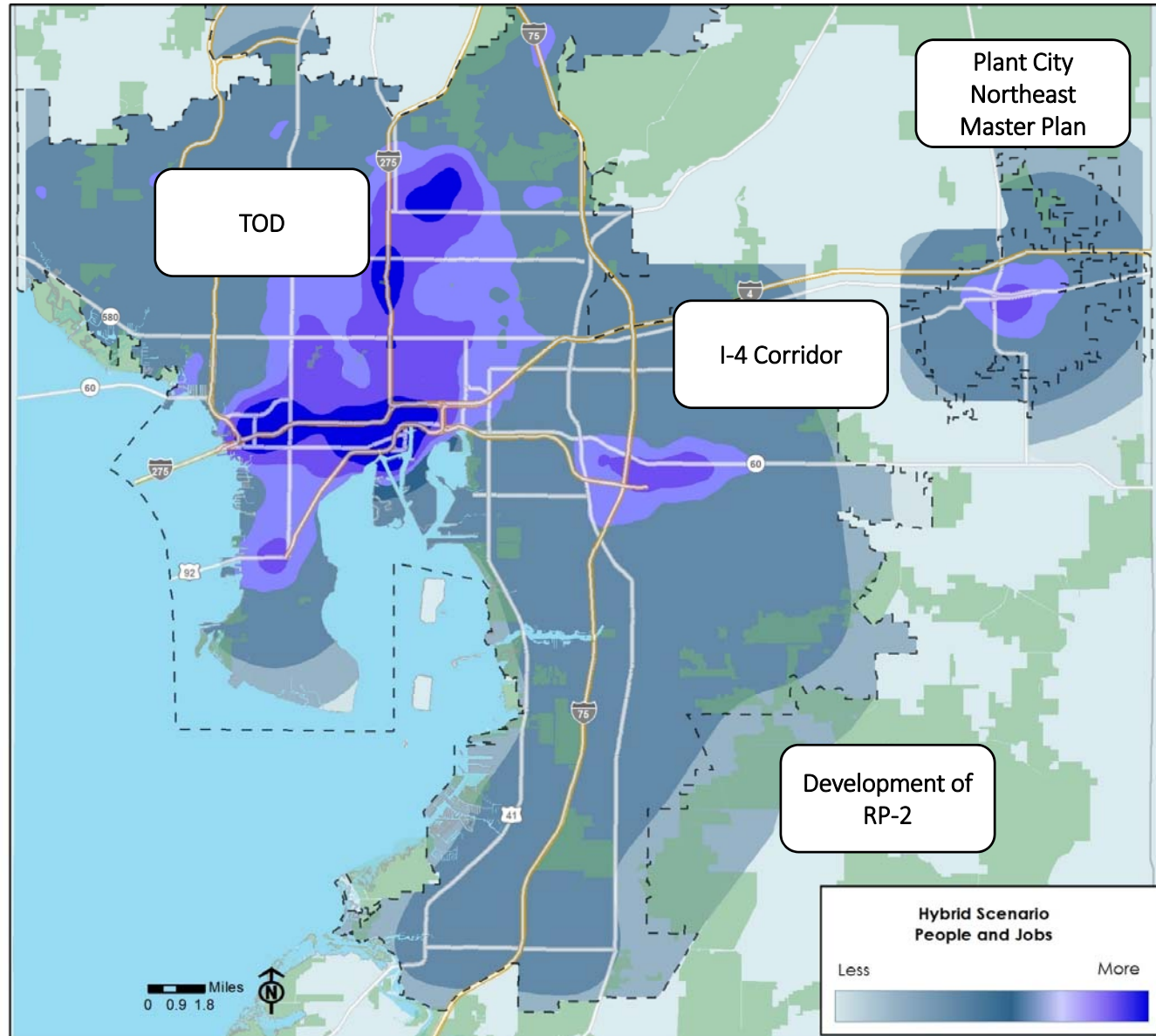
# Market analysis: Lower employment control total





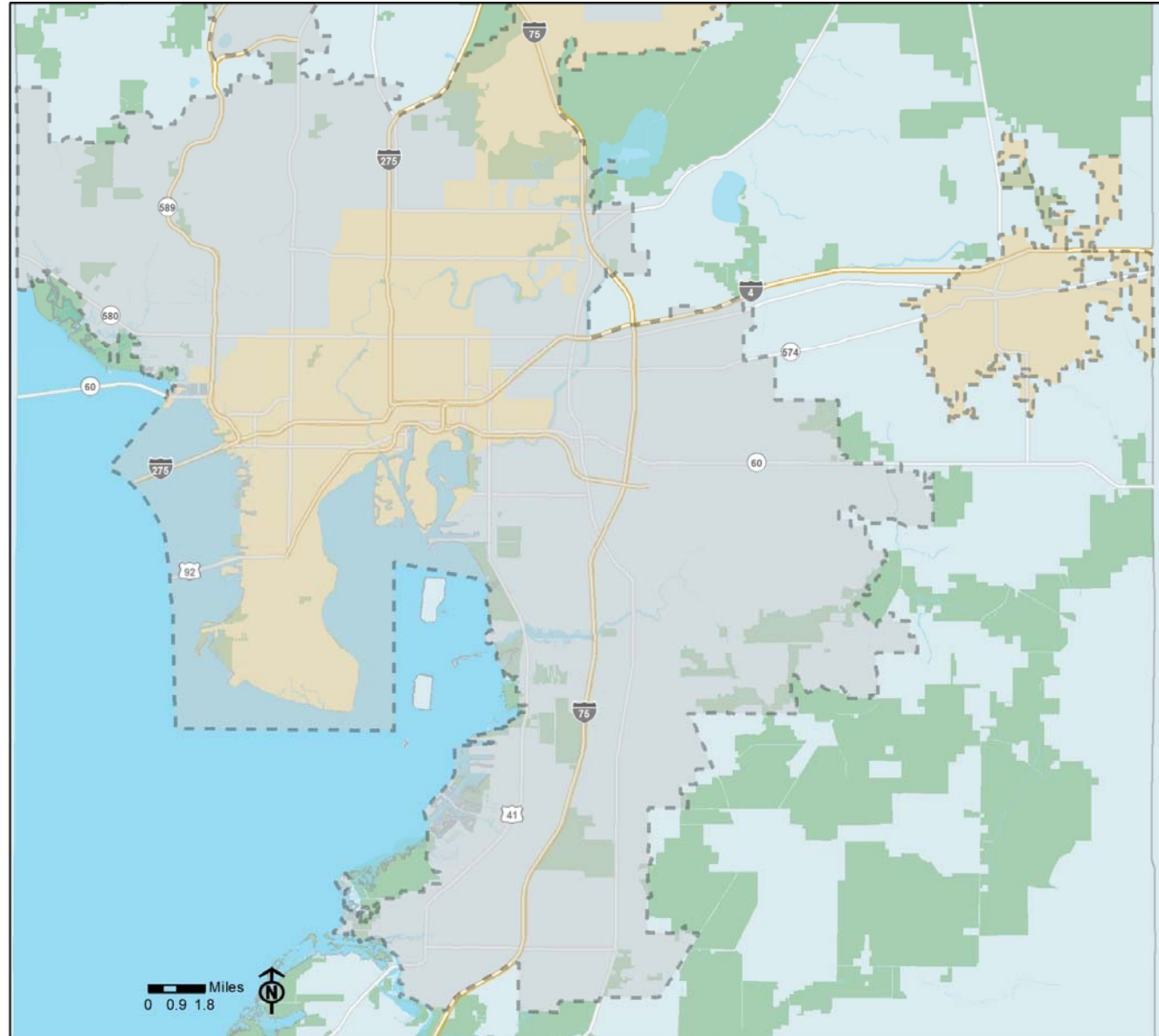
# Hybrid Scenario

- Capacity for 2,026,000 million people at buildout
- 2045 projection is 2,007,000 people



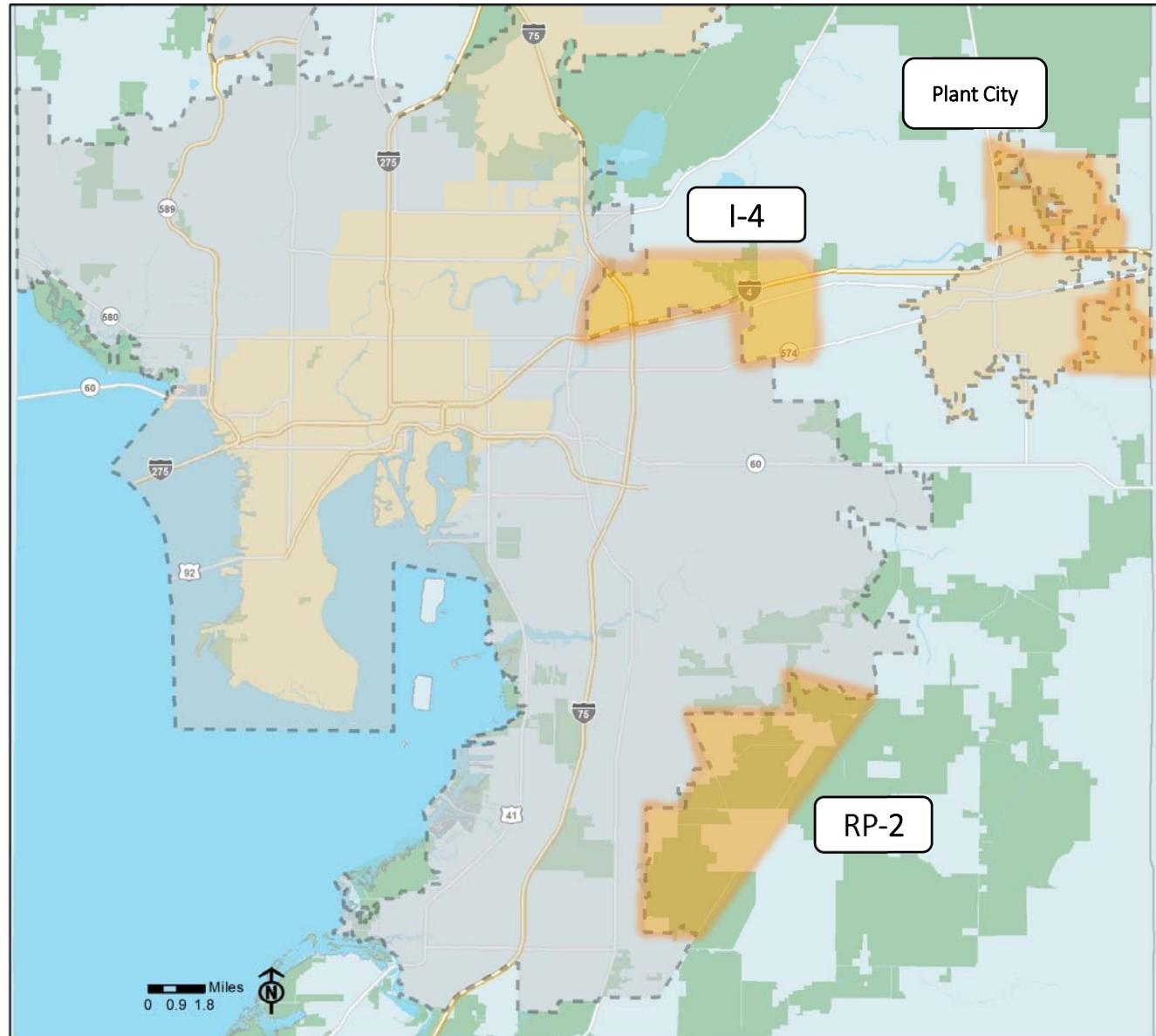
# Existing Urban Service Area

- Additional 553,000 people by 2045

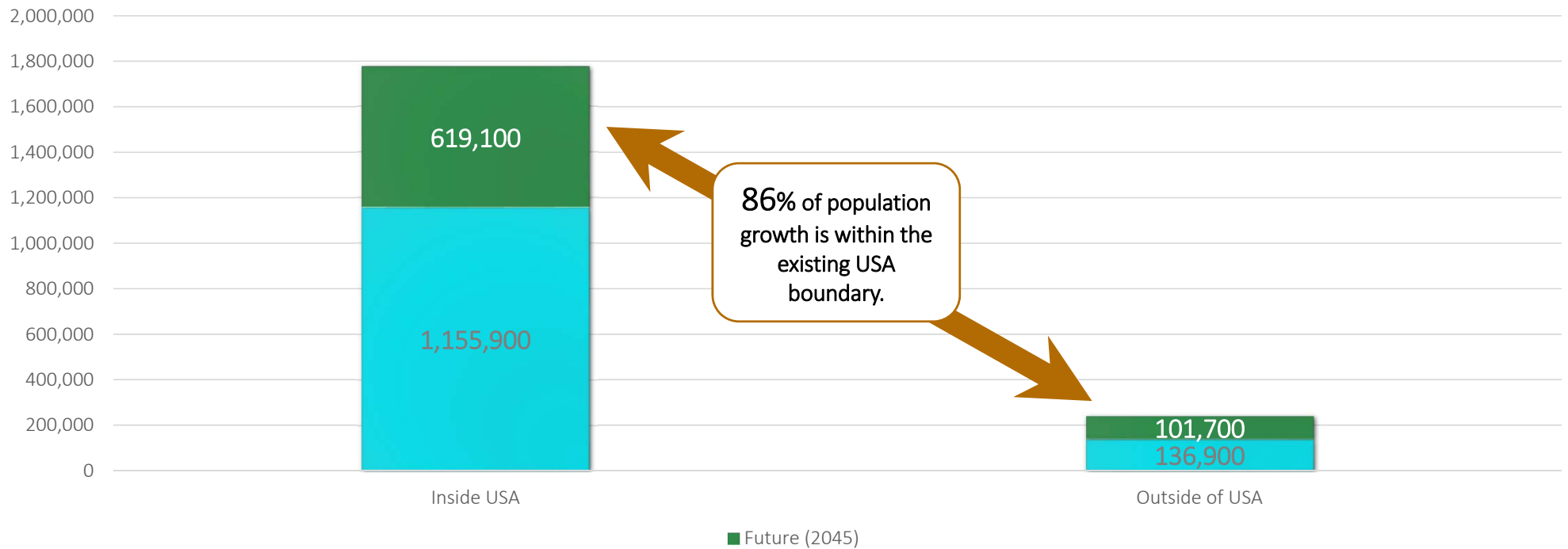


# Potential Future Expansion Areas

- 5,400 acres
- 66,000 more people

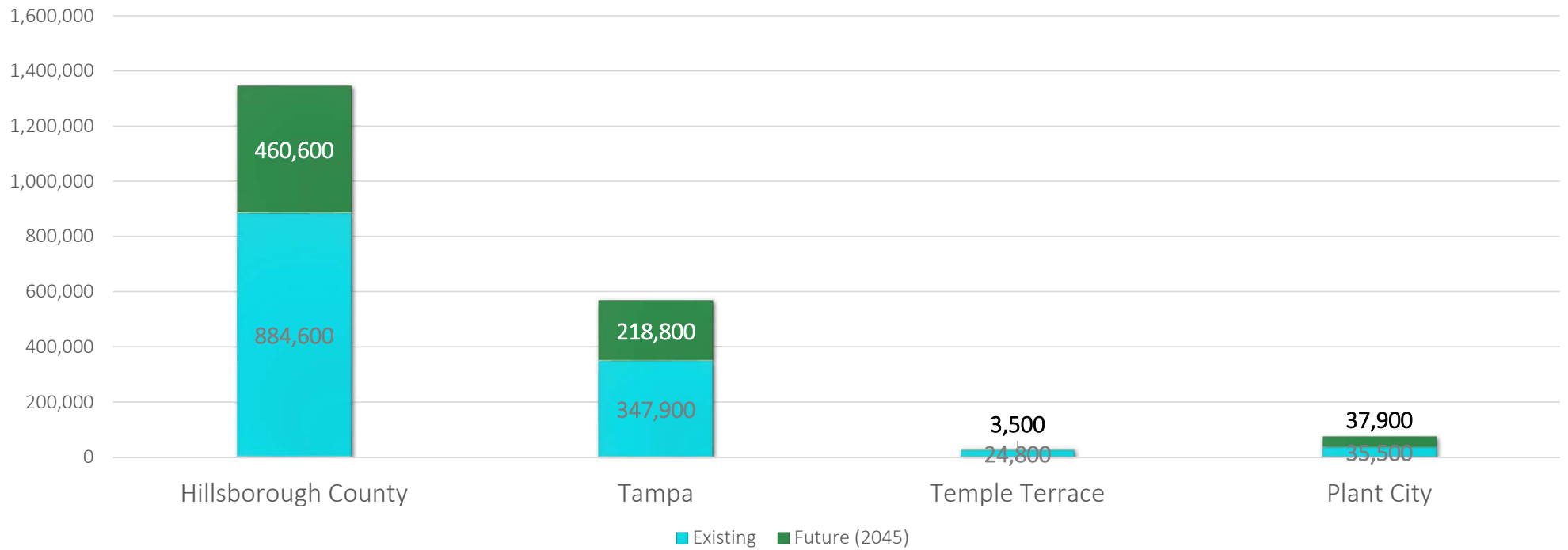


# Population Growth with USA expansion

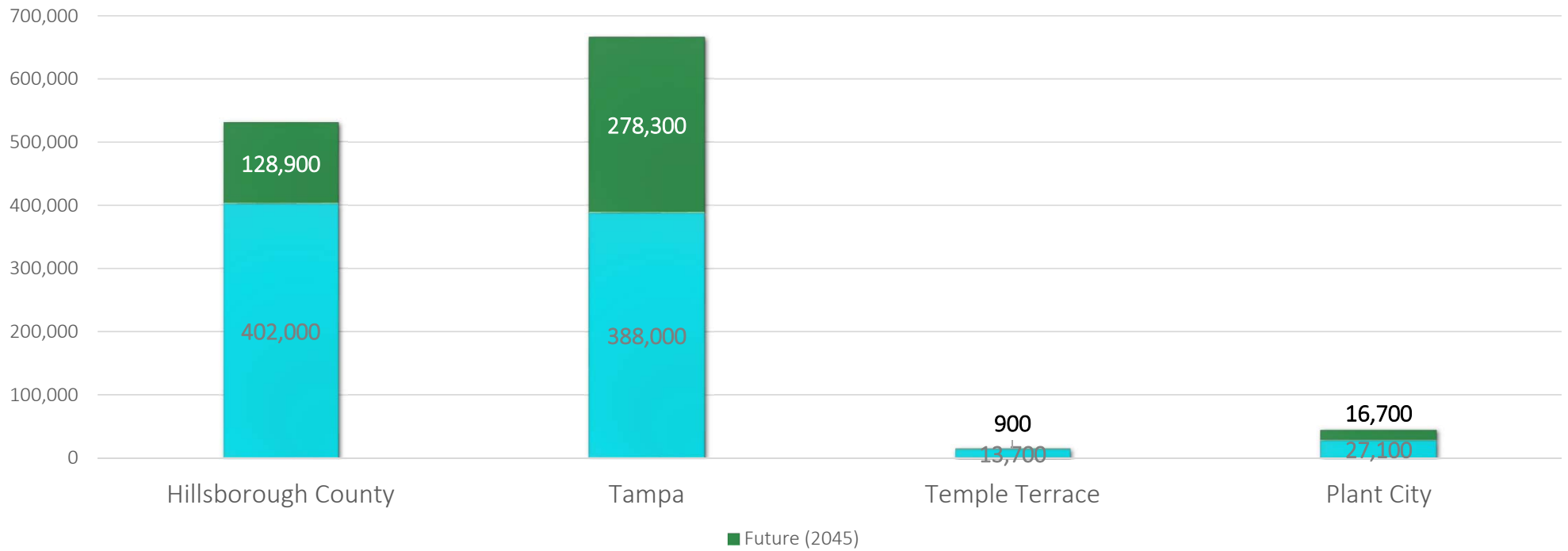




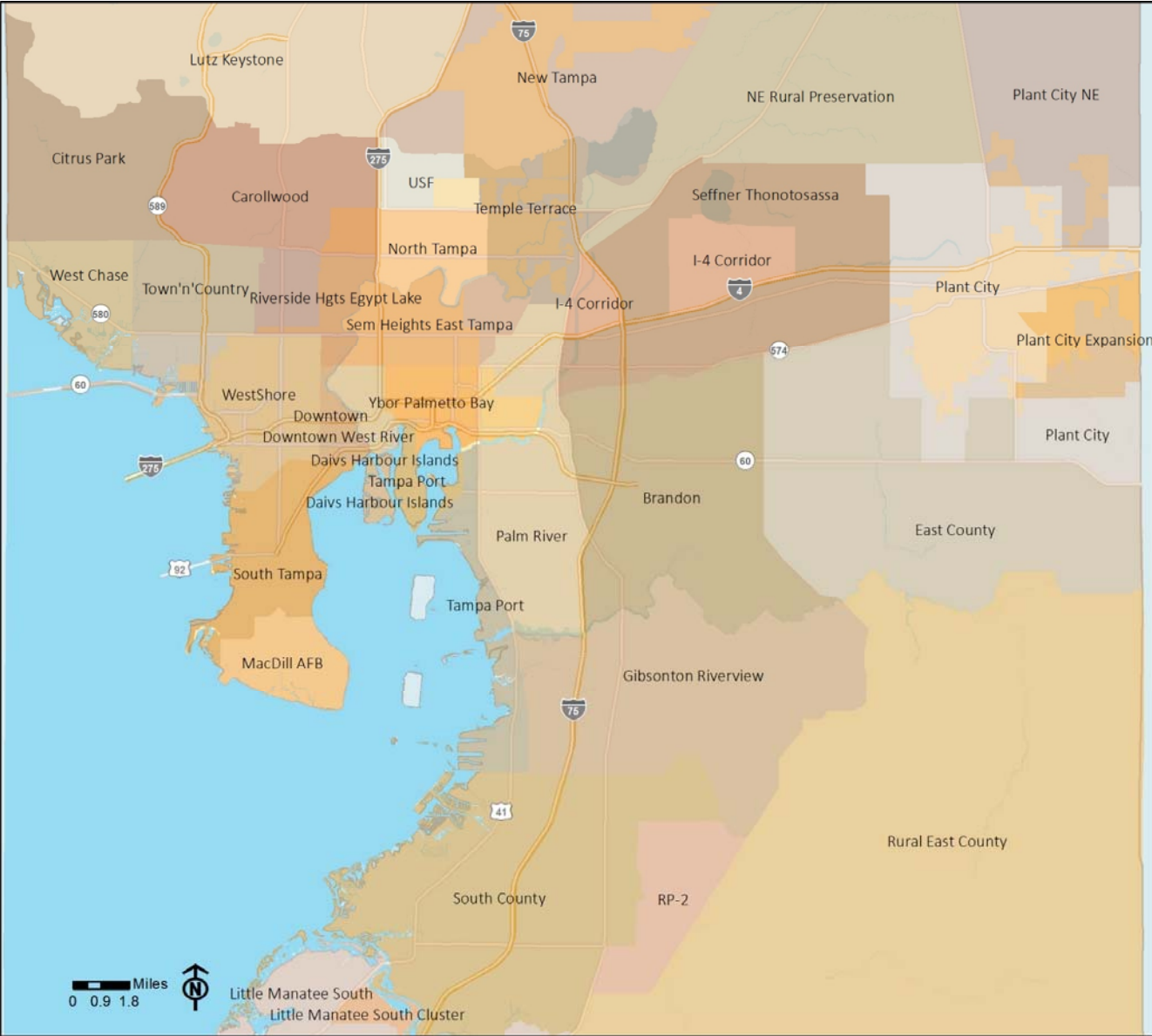
# Population Growth by Jurisdiction



# Employment Growth by Jurisdiction



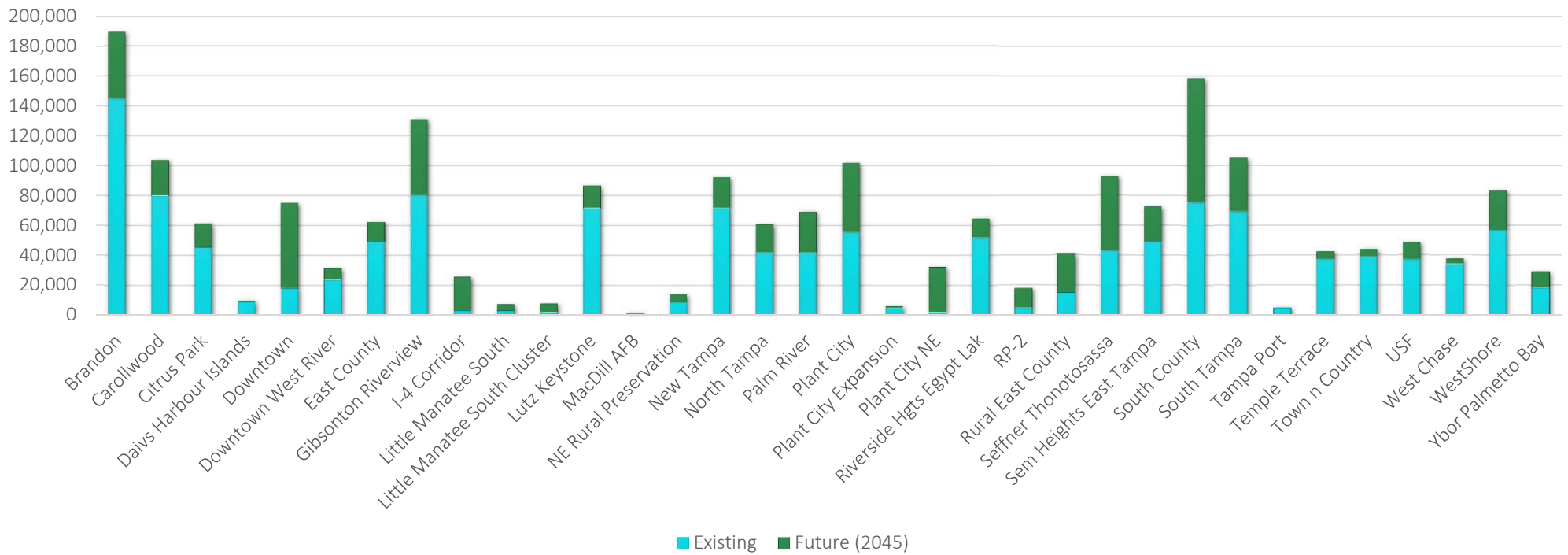
# Sub Areas





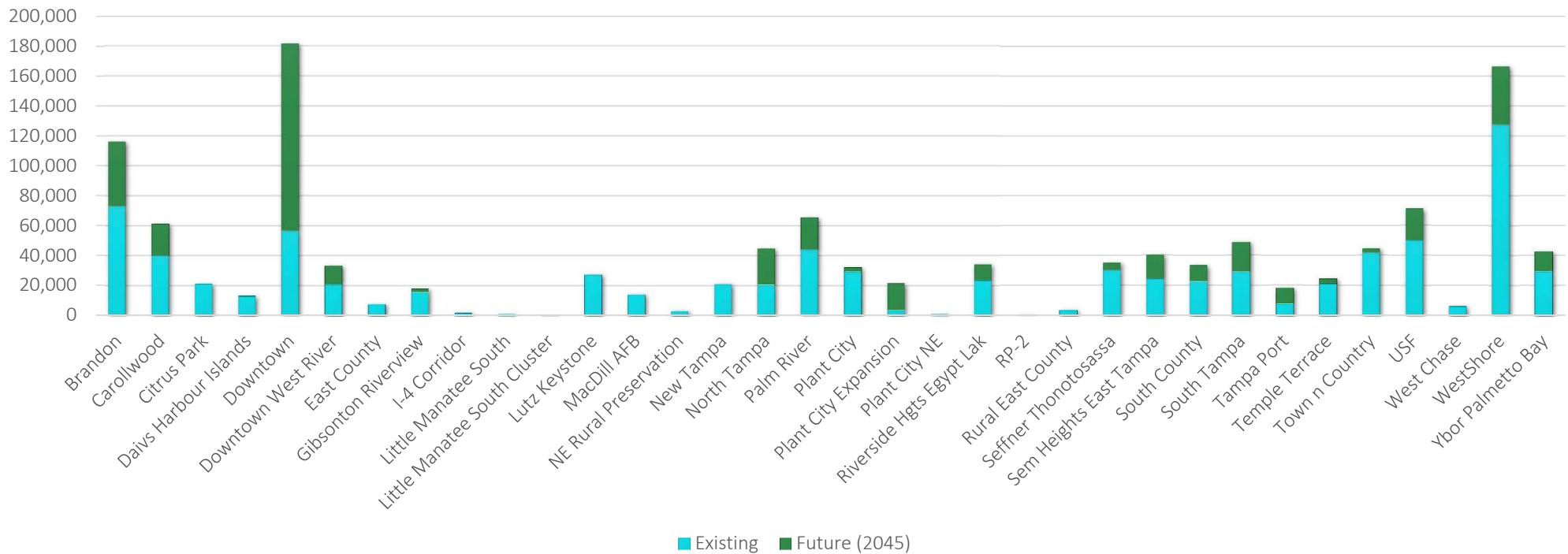


# Subarea Population Growth

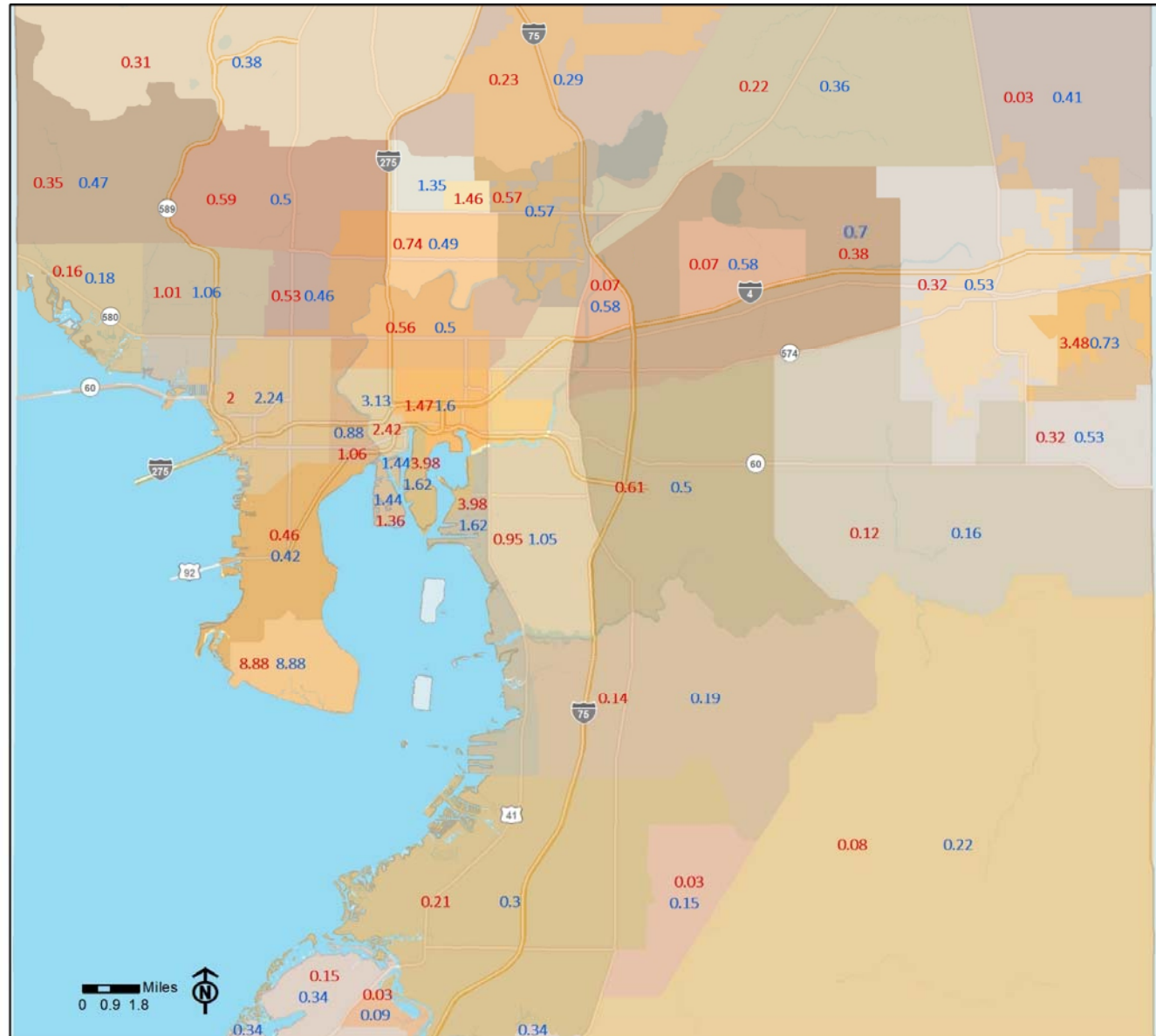




# Subarea Employment Growth



# Sub Areas: Jobs per Person





# Hybrid Scenario

Planning Commission  
Shawn College, AICP

January 14, 2019

