

# Tampa

## School Transportation Safety Study

Project Overview



**Plan  
Hillsborough**



# Presentation Outline

- Project Overview
- School Site Selection
  - Equity 40/Safety 40/Misc. 20
- Data Collection Highlights
  - Field Observations
  - Survey Results
- School Specific Transportation System Improvements
- Encouragement/Education Highlights



# Project Overview



- Building on the School Safety Study completed in 2018, and implementation of Vision Zero
- Identification of physical transportation system improvements around and connecting to a set-of schools
- Development of school specific education and encouragement strategies and a template/process that can be used for other schools in the district



**HILLSBOROUGH COUNTY MPO**

**SCHOOL SAFETY STUDY**

FINAL REPORT SEPTEMBER 2018



# Project Overview



- Assemble Stakeholder Group
- Survey District Families and School Administration
- Update School Prioritization List
- Assess Existing Safe Routes to School Programs at Area Schools
- Develop Educational and Encouragement Materials for Select Schools
- Identify Physical Improvements for Select Schools

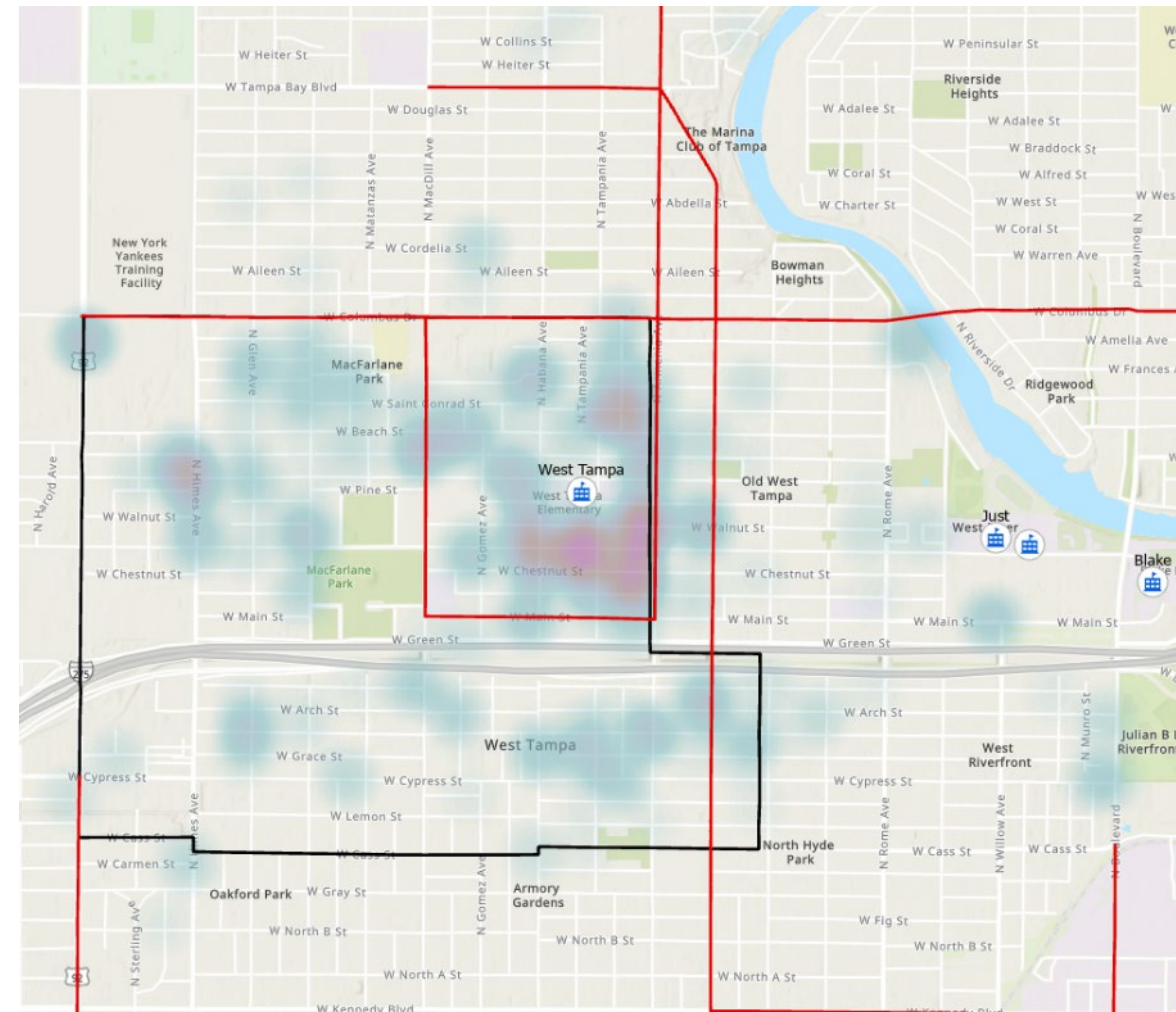




# School Site Selection

## Evaluation Criteria

- School location and enrollment
- Size/dimensions of enrollment boundary area
- Underserved community designations
- Percent of students qualifying for free or reduced lunch
- High Injury Network
- Bicycle and Pedestrian fatality and serious injury locations (2017-2021)
- All Traffic crashes that involve school aged people during travel to/from school times and other times
- Roadway network characteristics
- Proximity to other schools, libraries, and recreation centers



# School Site Selection Details

## Scoring

1. Within a designated underserved community  
(20 points / equity)
2. Percent of students who receive a free or reduced cost lunch  
(20 points / equity)
3. Enrollment area includes Top 50 Corridor  
(5 points / safety)
4. Number of Bike/Ped KSIs within school enrollment boundary  
(20 points / safety)

## Scoring

5. Number of Total KSIs within school enrollment boundary  
(15 points / safety)
6. Density of students within enrollment area  
(5 points / other)
7. Roadway network characteristics  
(5 points / other)
8. Within a half mile of a school/library/community activity hub (10 points / other)



# Final List of Schools

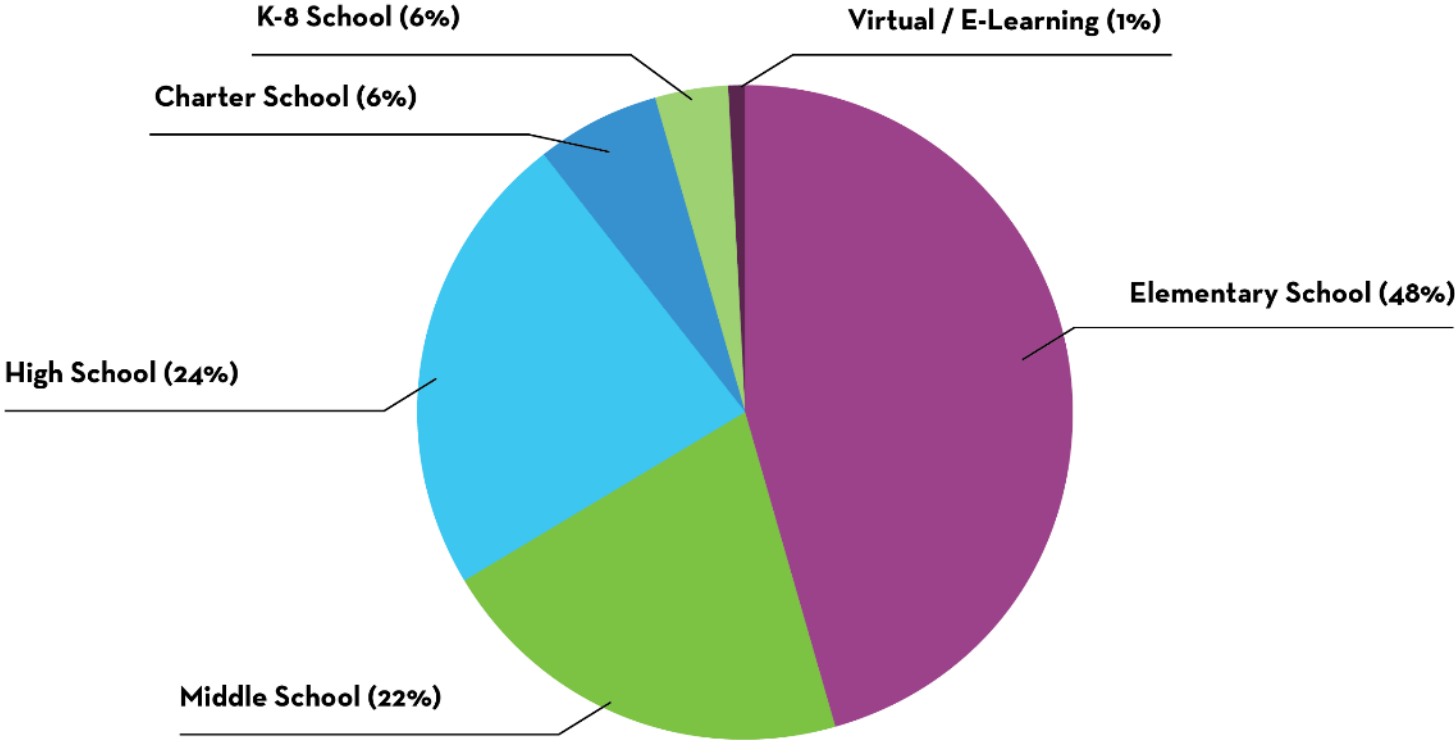
- Shaw Elementary – top ranked elementary school in the district (53 points)
- Blake High School – top ranked high school in the district (53 points)
- Orange Grove Middle Magnet – top ranked middle school that was not studied in 2018 (50 points)
- Just Elementary (50 points)
- West Tampa Elementary (48 points)
- Stewart Middle Magnet (47 points)
- Potter Elementary (47 points)
- Jefferson High School (41 points)



# High Level Survey Results – Family Surveys

## Over 10,000 responses!

### Survey Responses by School Type





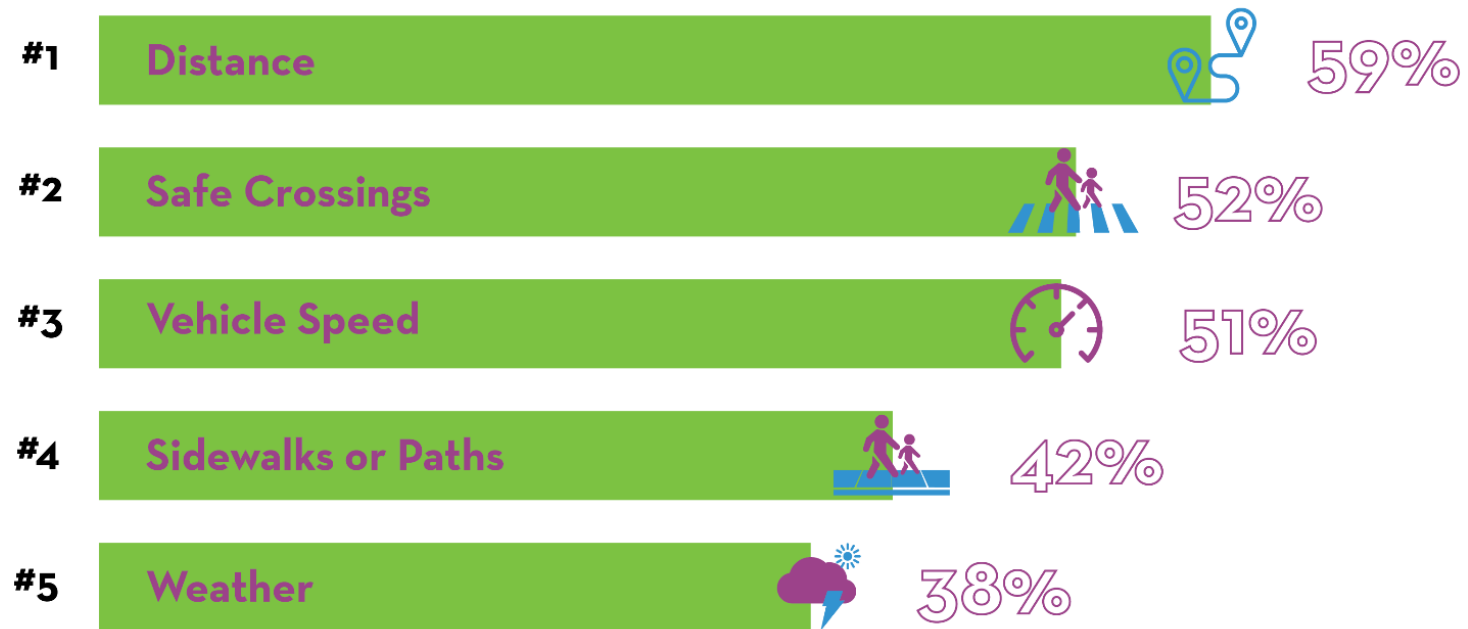
# High Level Survey Results – Travel Mode To and From School – Family Surveys

Travel Mode	Trips to School	Trips From School
Walks alone	2.6%	3.9%
Walks with a parent	3.9%	3.2%
Walking School Bus	0.8%	0.5%
Bicycles alone	2.4%	2.5%
Bike Train	0.6%	0.6%
Scooter/Skateboard	0.2%	0.2%
School bus	31.1%	34.0%
Public transit	0.3%	0.3%
Personal vehicle	53.1%	44.5%
Carpool	3.4%	3.1%
Daycare Transportation	0.5%	5.5%
Contracted Private Provider	0.3%	0.5%
Other form of transportation	0.8%	1.1%
	100%	100%



# Barriers to Walking/Biking

## Top 5 Issues Affect Parents Decision for Student to Walk or Bike



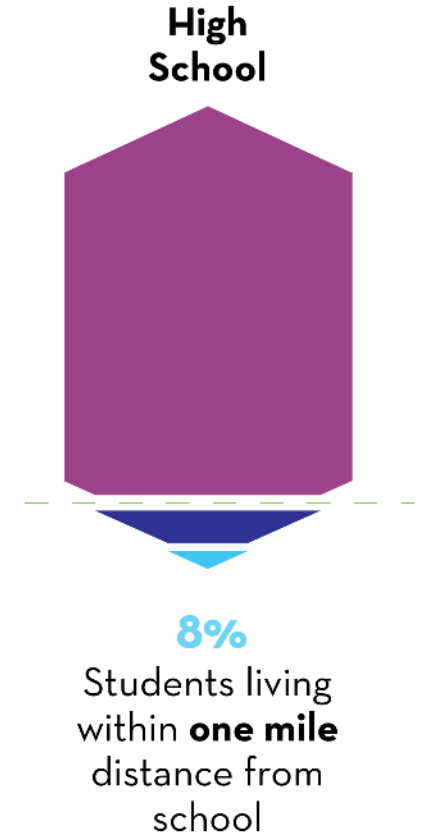
Note: Survey respondents could select any number of issues affecting their decision



# High Level Survey Results – Family Surveys

## Student's Ability to Walk to School

A half-mile distance is considered a reasonable length younger students will walk to school. Older Students are more willing to walk between 1-mile and 1.5 miles.



# High Level Survey Results – Family Surveys COVID Shifts in travel

- 57% noted no change in travel to/from school compared to pre-covid.
- 4% reported that their student stopped taking the bus to school
- 3% reported that their student started taking the bus
- Less than 1 % reported that their student is transported to school in a car less often
- 8.5% reported that their student is transported to school in a car more often
- 1.6% reported carpooling more often
- 1 % started walking





# High Level Survey Results – Strategies for tracking student travel

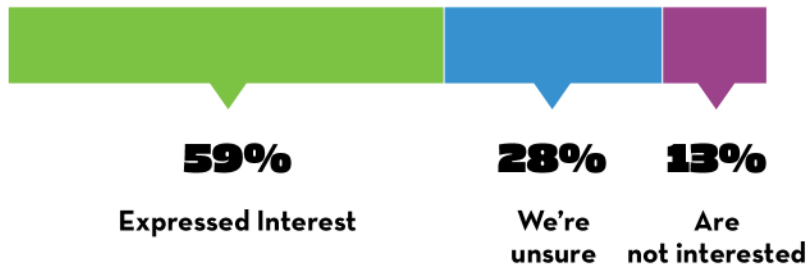
- Phone/video calls
- Text messages
- Phone applications (find my friend, find my kids, followmee.com, Google Family App, etc.)
- Life 360
- AirTag
- Preschool has an app that notifies parents when students arrive (Hunter's Green Elementary)
- GPS Phone Watch – Gizmodo
- Neighbors keep an eye out
- Follow the kids
- Trust
- Carpool with friends and parents coordinate
- Ring™ Doorbell
- Parent works from home
- Wait with them/for them at bus stop
- Alexa



# High Level Survey Results – Schools

**82** Elementary School Principals Responded

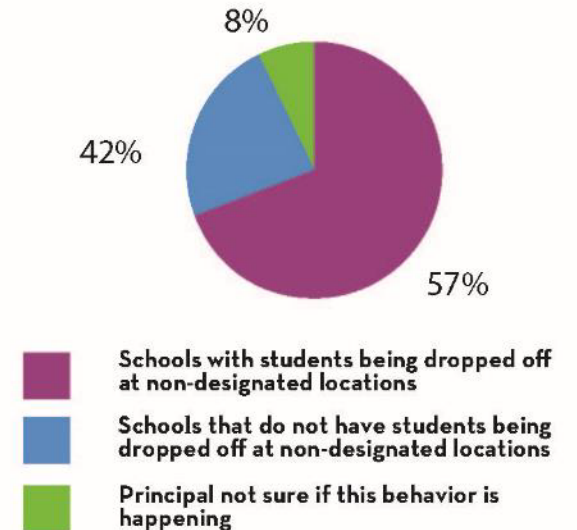
## Principal Interest in School Safety Program



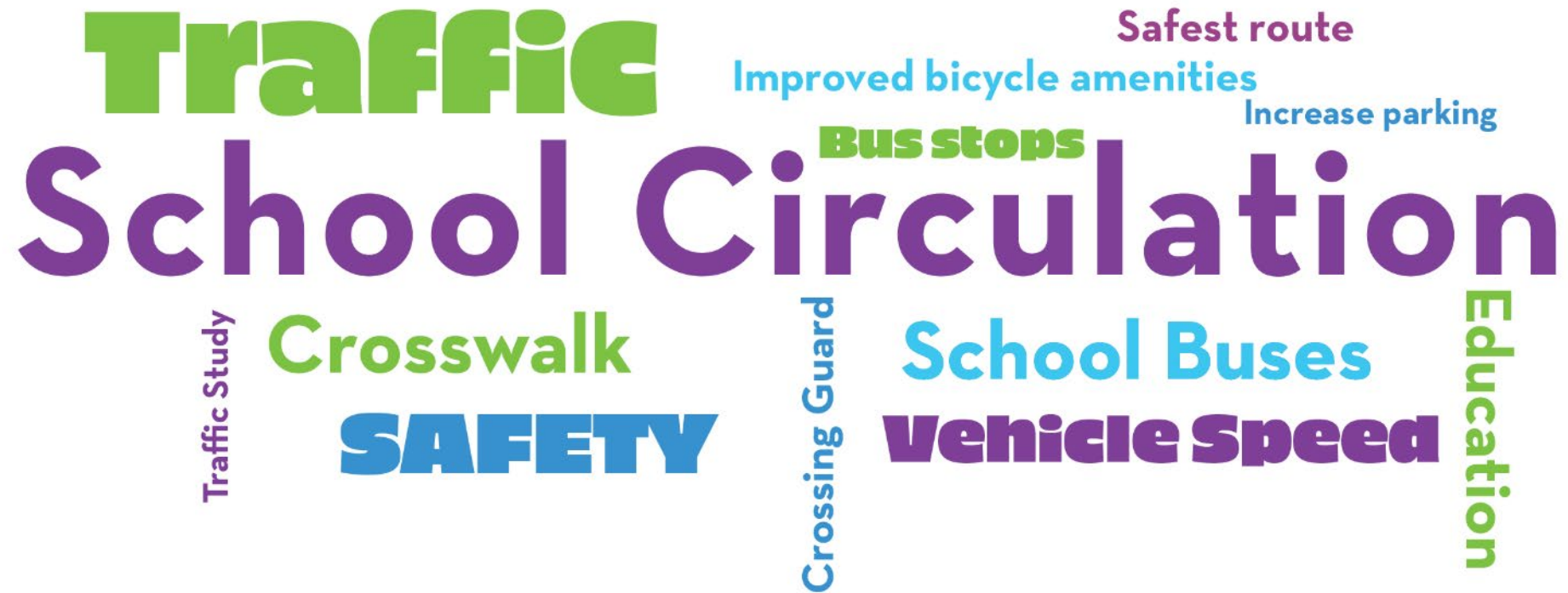
## Schools with Largest Walking Population

Sullivan Partnership Elementary School	50%
Just Elementary School	30%
Clair Mel Elementary School	30%
Cleveland Elementary School	30%

## Student Drop-off at Non-Designated Location



# High Level Survey Results – Schools



# Common School Circulation Strategies

- Staggered dismissals by grade
- Placards/Tags on vehicles (per assigned numbers/names)
- Multiple dismissal locations
- Staggered dismissal by mode
- Use phone-based app to communicate with drivers (Voxer)
- Walking school bus
- Temporary road closures to private vehicles (buses allowed through)
- Use walkie talkies to identify upcoming vehicles and get student ready to load faster
- Signage / cones to direct traffic in car line
- Car riders wait in cafeteria and wait for their name to be called
- Priority pick-up line for carpools
- Priority days for walking
- Prizes for walking/biking





# Common School Circulation Strategies

- Staggered dismissals by grade
- Placards/Tags on vehicles (per assigned numbers/names)
- Multiple dismissal locations
- Staggered dismissal by mode
- Use phone-based app to communicate with drivers (Voxer)
- Walking school bus
- Temporary road closures to private vehicles (buses allowed through)
- Use walkie talkies to identify upcoming vehicles and get student ready to load faster
- Signage / cones to direct traffic in car line
- Car riders wait in cafeteria and wait for their name to be called
- Priority pick-up line for carpools
- Priority days for walking
- Prizes for walking/biking

## Resources Needed

- Cones
- Movable Barriers
- Walkie-Talkies
- Cardboard signs
- Staff and staff training
- Prizes
- Phones
- Parent cooperation



# Transportation Safety Audit

- Morning drop-off and afternoon pick-up observations
- On-site Circulation
  - Queue management strategies
- Infrastructure around campus
  - Incomplete or poorly maintained
- Driver behavior





# Transportation Safety Audit

- Location of crossing guards
- Behavior of people walking and biking
- ADA Compliance Issues



Students forced into drive aisle



ADA compliance



Crossing guards at work!





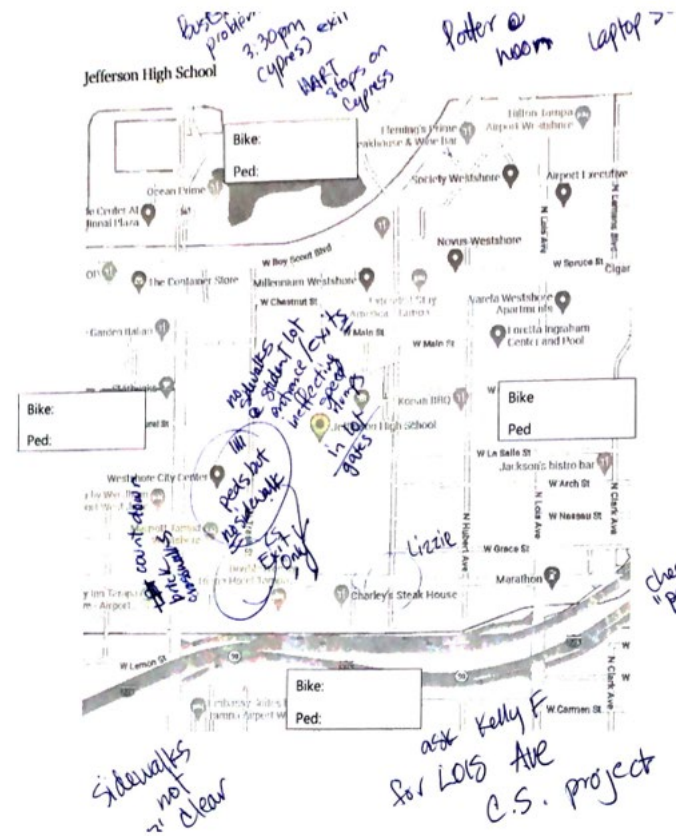
# Safety Audit Highlight

## Bus Strategies





# Transportation Safety Audit





# West Tampa Elementary

## FAST FACTS

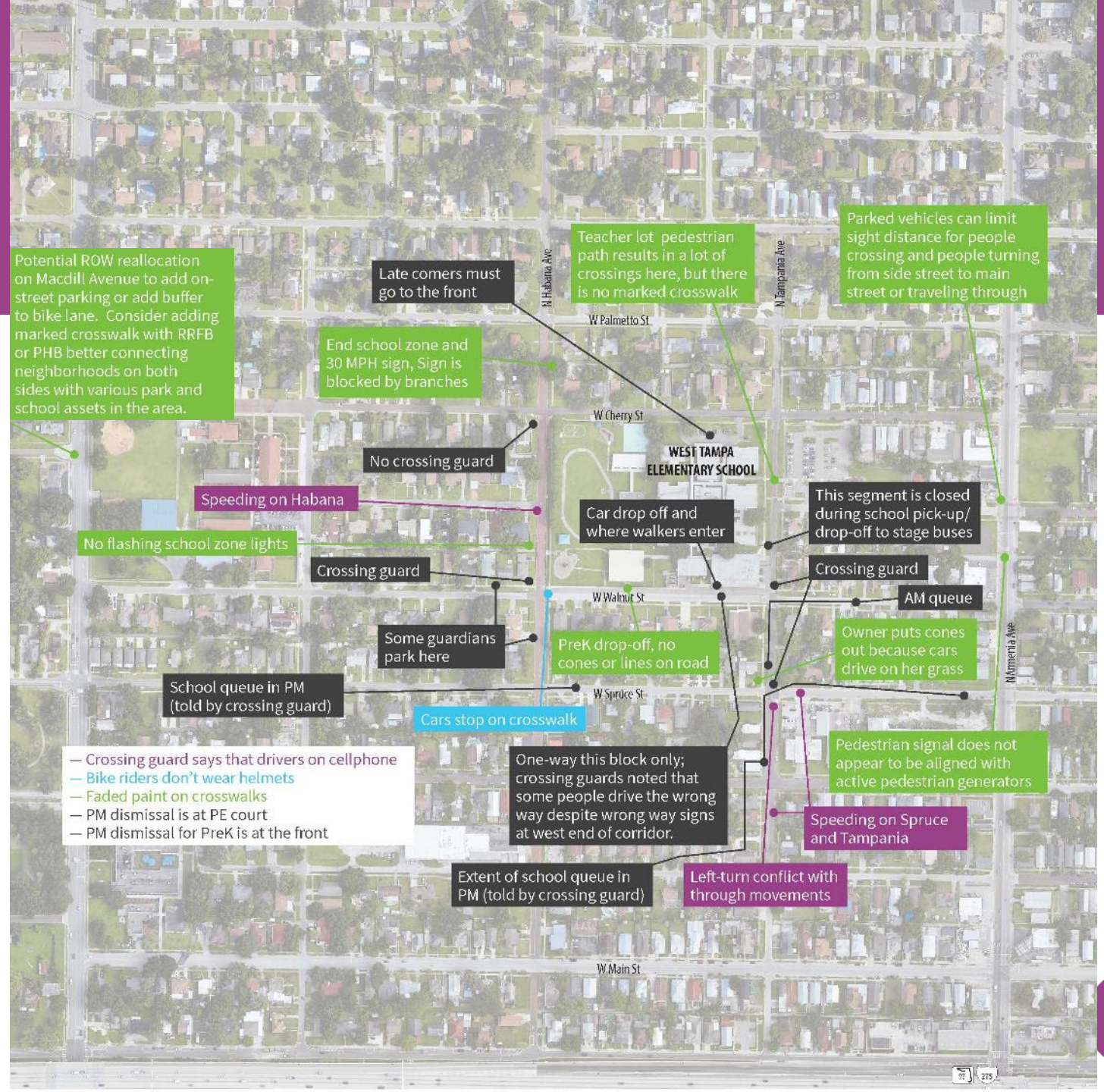
- 429 students (95% minority population)
- 2 school buses
- ADT on Habana Avenue is about 9,300 vehicles/day on average over the past 5 years
- ADT on Armenia Avenue is about 8,100 vehicles/day on average over the past 5 years
- ADT on Main Street is about 2,500 vehicles/day on average over the past 5 years

## TAMPA SCHOOL SAFETY



Informational  
Driving in excess of posted speed limit/reckless driving

Incomplete infrastructure  
Parents/guardians not obeying rules





# West Tampa Elementary – Survey Results

## Family Survey

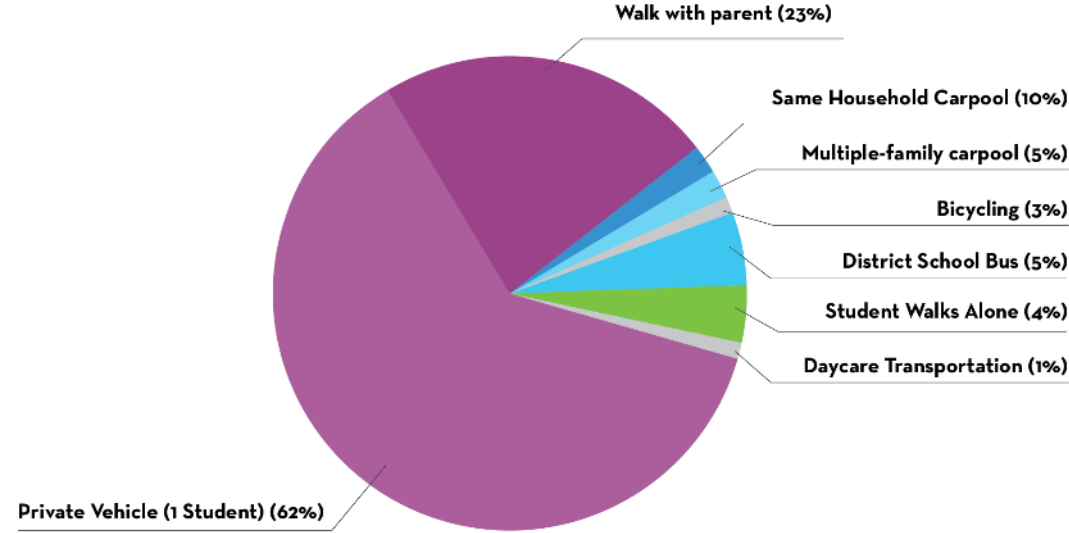
- Eight families completed survey, some with multiple children at the school
- These families represent:
  - Personal vehicle
  - Walks alone
  - Walks with parent
- 75 percent would not feel comfortable allowing their child to walk in any grade
- Half cited distance as a barrier to walking to school
- Speed of traffic, the safety of intersections, and presence of crossing guards (lack of) are all factors that affect their decision to let their student walk / bike to school
- Some are also concerned about crime in the area
- Specific mention of challenges crossing Armenia and Howard, as well as parked cars on major streets impeding visibility when trying to cross



# West Tampa Elementary Survey Results

## West Tampa Elementary School

### Mode Split Estimates



### Existing Challenges & Barriers

	Distance	Not Aware of Routes	Lack of Sidewalks	Lack of Bike Facilities	Lack of Ped Facilities	Lack of Crossing Guard	Insufficient Lighting	Safety at the Intersection	Violence/ Crime in area	Weather/ Climate	Before & After School Facilities
Walking	●						●	●	●	●	●
Bike, Scooter, Skate											
Bus	●										



Crossing Guard Present?

**YES**



Most Important Issue

Getting a bus stop closer to the Midtown community



Staff help to manage arrival and dismissal at school



Preliminary Ideas Shared

None at this time



# West Tampa (in person principal charrette)

painted crosswalk with logo in center - no paint on brick  
 Improved signage - mark pavement arrows  
 into way

**TAMPA SCHOOL SAFETY**

TAMPA School Transportation Safety Study

Driving in excess of posted speed limit/reckless driving

Complete Infrastructure

Parents/guardians not obeying rules

- Armemont Howard are worky - they have a KIDS plan

= main - MacDill - Blvd. V&B project

**Other Considerations:**

- What locations could benefit from marked crosswalks?

- What locations could benefit from enhanced crosswalks?

- Himes + Dale maulory - Apt bus stop location

MacDill - Truck route was recently reduced in speed from 40 to 35 → new plans to 30

West Tampa Elementary School  
West Cherry Street  
Tampa, Florida

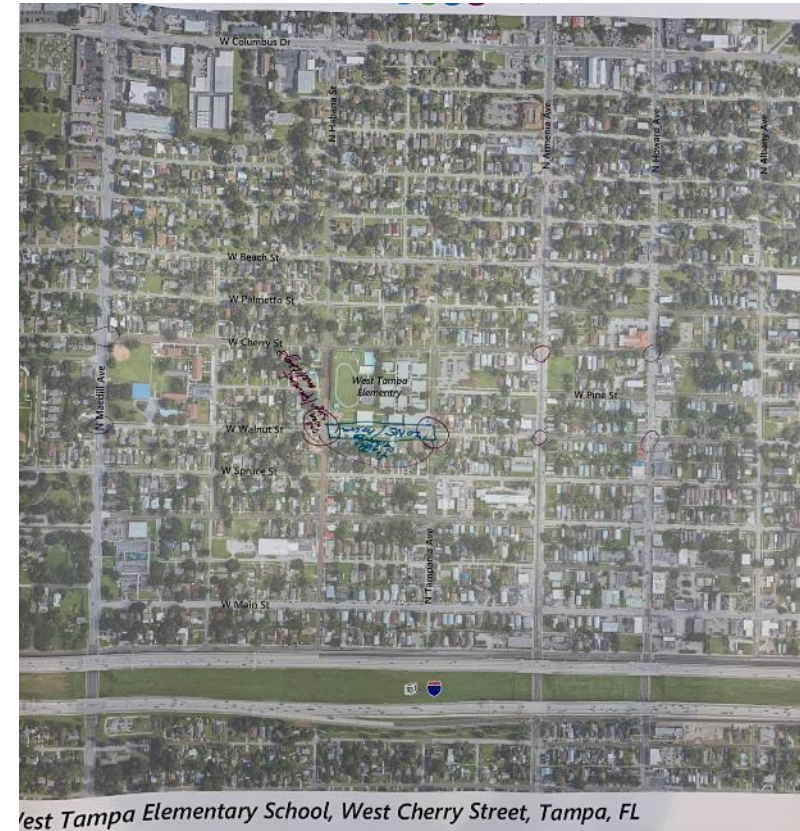
North Himes + Dale  
Cherry

15mph Speed Zone on Walnut  
AIS - meet the teacher - 1-2

speed tables / speed humps

new AWS

parking to CASS



West Tampa Elementary School, West Cherry Street, Tampa, FL





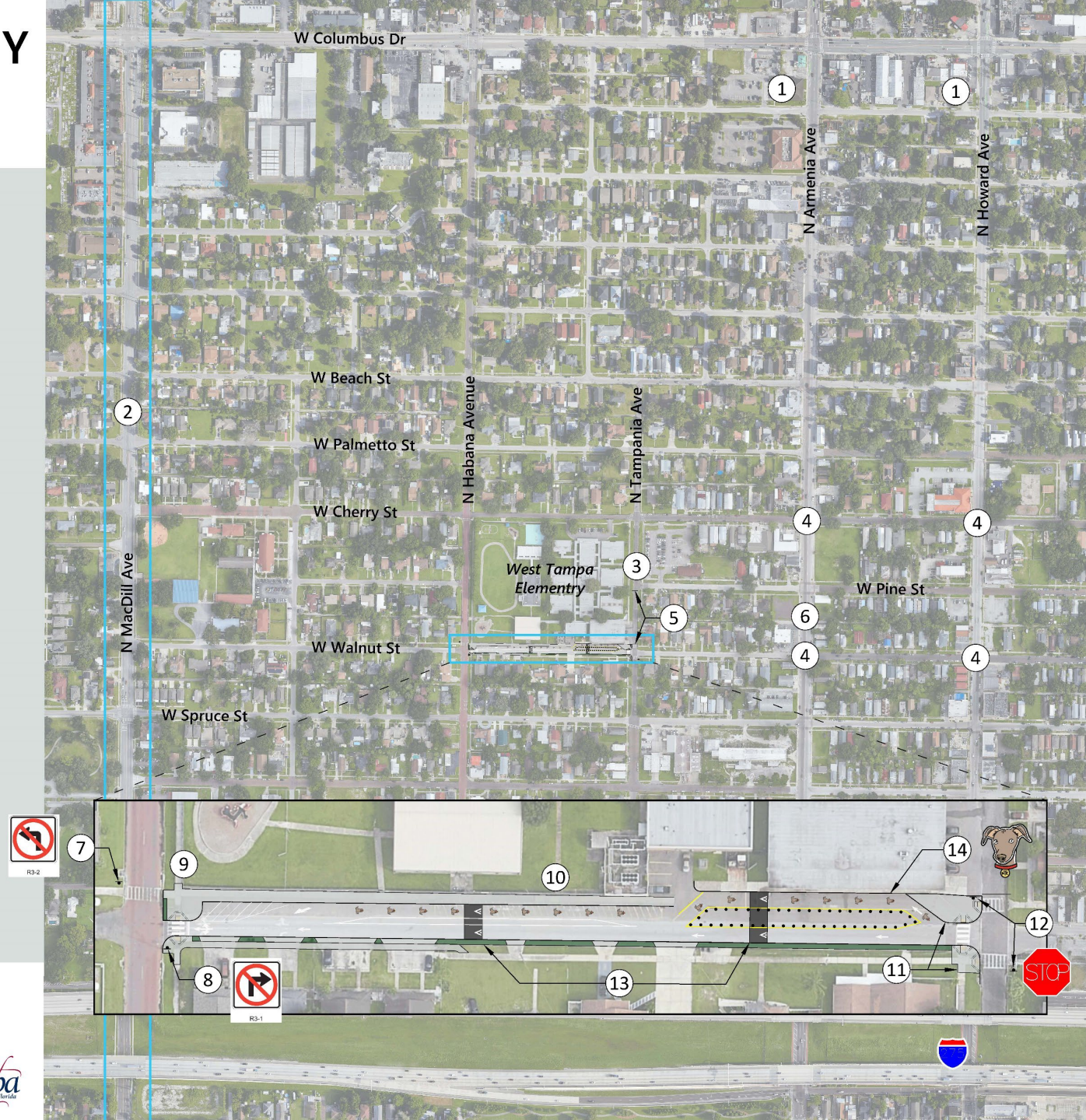
# TAMPA SCHOOL SAFETY



1. Implement improvements on Armenia Avenue and Howard Avenue as identified in the West Tampa Multi Modal Plan, which generally include adding bicycle facilities, narrowing travel lanes, eliminating excess turning capacity to shorten pedestrian crossing distances, widening the sidewalk, and constructing curb extensions. While all on-street parking is generally expected to be maintained, parking restrictions may need to be implemented to provide adequate sight-distance.
2. Evaluate Macdill Avenue for lane repurposing and evaluate providing additional marked and controlled crossing locations connecting from neighborhoods to the schools.
3. Add marked crosswalk connecting teacher parking lot to the school.
4. Upgrade curb ramps for ADA compliance and install marked crosswalks and other appropriate crossing treatments.
5. Formalize process to close one block portion of Tampania Avenue during morning drop-up and afternoon pick-up. See report for additional details.
6. Evaluate location of pedestrian crossing in conjunction with other planned improvements on Armenia Avenue. If crossing is to remain, provide ADA compliant curb ramps and advanced stop bar.
7. Install No Left Turn sign (R3-2).
8. Install No Right Turn Sign (R3-1).
9. Extend curb to narrow to one lane to further reinforce the one-way designation.
10. Update striping to reduce vehicle conflicts. Move the southern edge of pavement 3.5 feet north to align with the curb extensions on the east and west side of the corridor. Extend sidewalk on the south side to connect to N Habana Street.
11. Install curb extensions. In the near-term, the curb extension can be created using striping and posts. In the long-term, consider raised curbs.
12. Convert W Walnut Street and N Tampania Avenue to All-Way Stop.
13. Install speed humps or consider using portable speed bumps.
14. Incorporate school logo into car line.

West Tampa Elementary School  
West Cherry Street  
Tampa, Florida

Figure ES-5





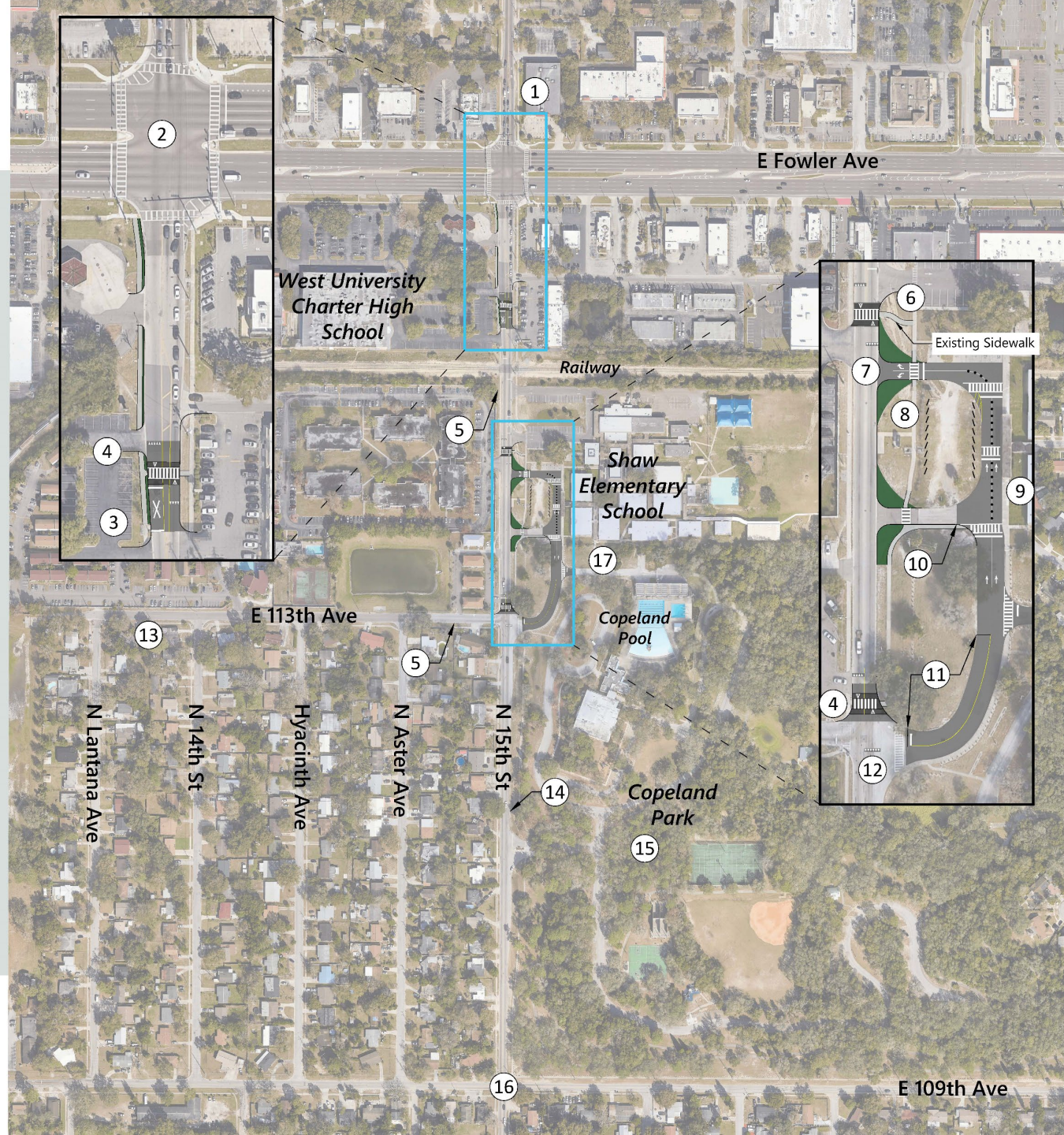
# TAMPA SCHOOL SAFETY



1. Coordinate with the County to remove pedestrian crossing signs where a crosswalk is not present; consider installing Advance Pedestrian Crossing sign (W11-2).
2. Implement the existing Improvement Plan for Fowler Avenue.
3. Connect bus stop to Fowler Avenue with a sidewalk.
4. Install raised crosswalk with advance yield lines and signage; consider installing RRFB.
5. Bring existing School Speed Zones into compliance with State Statute and install school zone flashers where appropriate.
6. Update crosswalk markings and convert to raised crosswalk with advance yield lines and signage; consider installing RRFB.
7. Modify driveways to reduce speed of vehicles turning to N 15th Street. To prevent people from parking across sidewalk and landscaped areas, consider installing curb or some other physical barrier.
8. Formalize lot for parking to maximize spaces and delineate walking routes from parking area to school entrance. Initially, parking spots can be delineated using railroad ties, wheel stops, pavers, or other material. Grass pavers could be considered for a longer-term installation.
9. Consider implementing a dual lane pick-up system where pick-up can be accomplished from both lanes. Additional operational details provided in text of report. Sign left lane for traffic going south on 15th Street and the right lane for traffic traveling north on 15th Street.
10. Install a gate or barricade to prevent traffic from using this entrance. Barricades can be formed by permanent or rolling planters, plastic or metal barricades, or other material.
11. Consider converting this roadway segment to one way only either during pick-up only or permanently to maximize on-site queue storage. Maintenance access to Copeland Pool may be affected and should be considered in final plans. Gates could be added and would have to be closed during pick-up/drop-off hours and reopened afterward.
12. Evaluate the intersection of N 15th Street and E 113th Avenue for All-Way Stop-Control Installation.
13. Construct a sidewalk on the north side of E 113th Avenue. This would likely require narrowing the roadway to 20 feet.
14. Evaluate potential to provide inset-parking on the east side of N 15th Street.
15. Implement improvements identified in the Safe Access to Parks Study, which includes installation of additional traffic calming along N 15th Street and E 109th Avenue, construction of sidewalks at main park entrance connecting to the internal walking system, street lighting upgrades, and other transportation system improvements.
16. Evaluate potential to install a mini-roundabout.
17. Provide more accessible and visible bike parking.

Shaw Elementary School  
N 15th Street  
Tampa, Florida

Figure ES-3





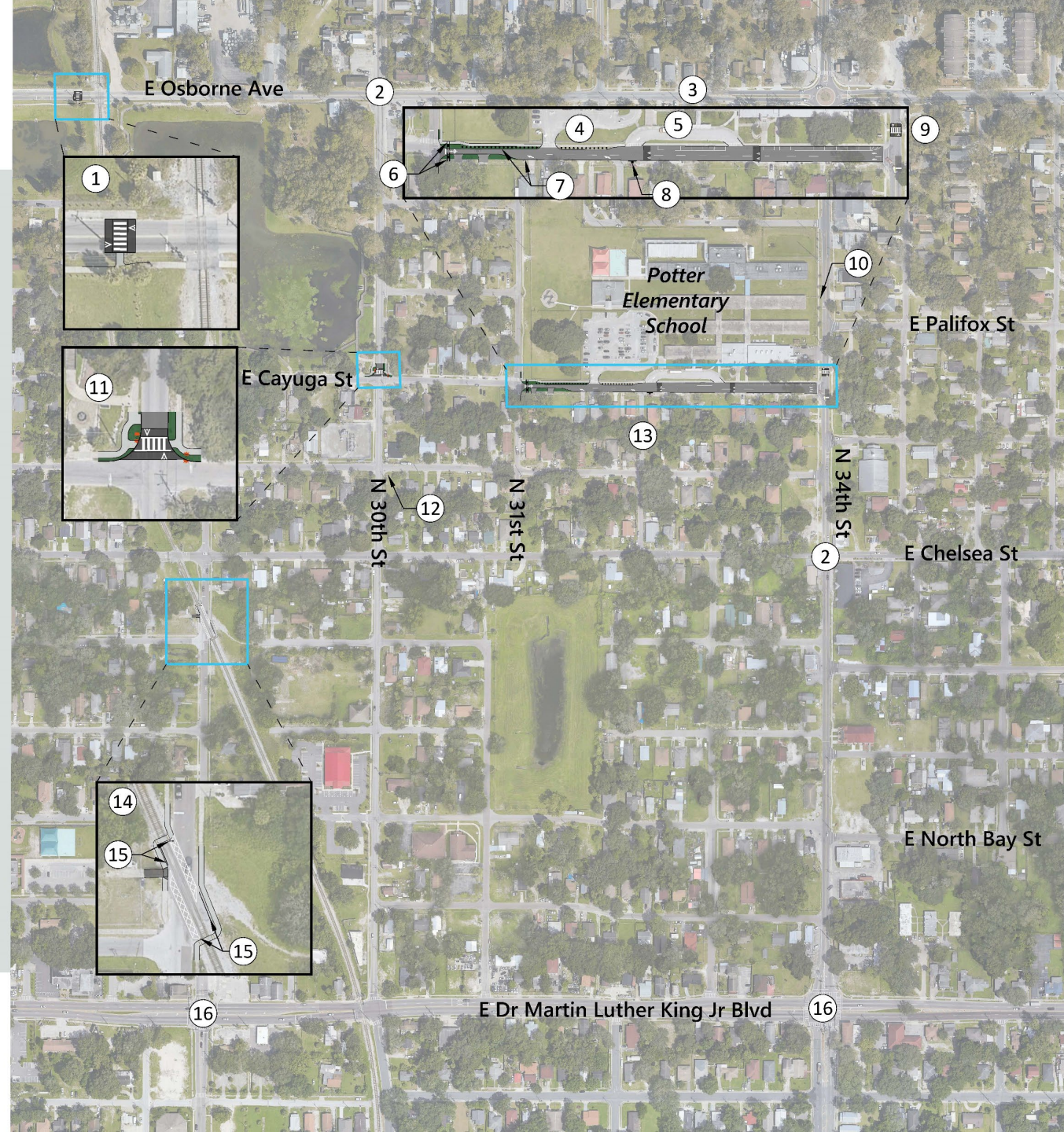
# TAMPA SCHOOL SAFETY



1. Install a raised crosswalk and work with CSX to upgrade crossing safety equipment.
2. Refresh crosswalk markings.
3. Install double yellow lines on E Osborne Avenue.
4. Add a vertical barrier between the roadway and sidewalk to prevent parents/guardians from blocking the sidewalk.
5. Convert Cayuga Street from N 31st Street to N 34th Street to one-way westbound and install two speed humps. Consider painting the school mascot or a mural on this segment to emphasize that it is a school zone.
6. Convert to an All-Way Stop. Install Stop Sign (R1-1) westbound, Do Not Enter sign (R5-1) eastbound, One Way sign (R6-1), No Right Turn sign (R3-1) northbound, and No Left Turn sign (R3-2) southbound.
7. Install signs prohibiting parking on both sides of E Cayuga Street between N 31st Street and the parking lot driveway.
8. Install One Way sign (R6-1) and No Right Turn (R3-1) sign.
9. Convert crossing to a raised crosswalk. Consider giving the crossing guard a key to manually override the signal.
10. Bring existing School Speed Zones into compliance with State Statute.
11. Install a raised crosswalk and RRFBs.
12. Refresh stop bar markings and consider installing marked crosswalks.
13. Remove the school zone sign on N 32nd Street.
14. Install sidewalks that intersect railroad tracks at a 90 degree angle. Sidewalks should have detectable warning surfaces before on either side of the tracks. Install dynamic envelopes in the roadway on either side or the tracks.
15. Install a railing to encourage users to stay on the sidewalk.
16. Add Leading Pedestrian Intervals and bicycle detection at Dr Martin Luther King Jr Boulevard.

Potter Elementary School  
Cayuga Street  
Tampa, Florida

Figure ES-4





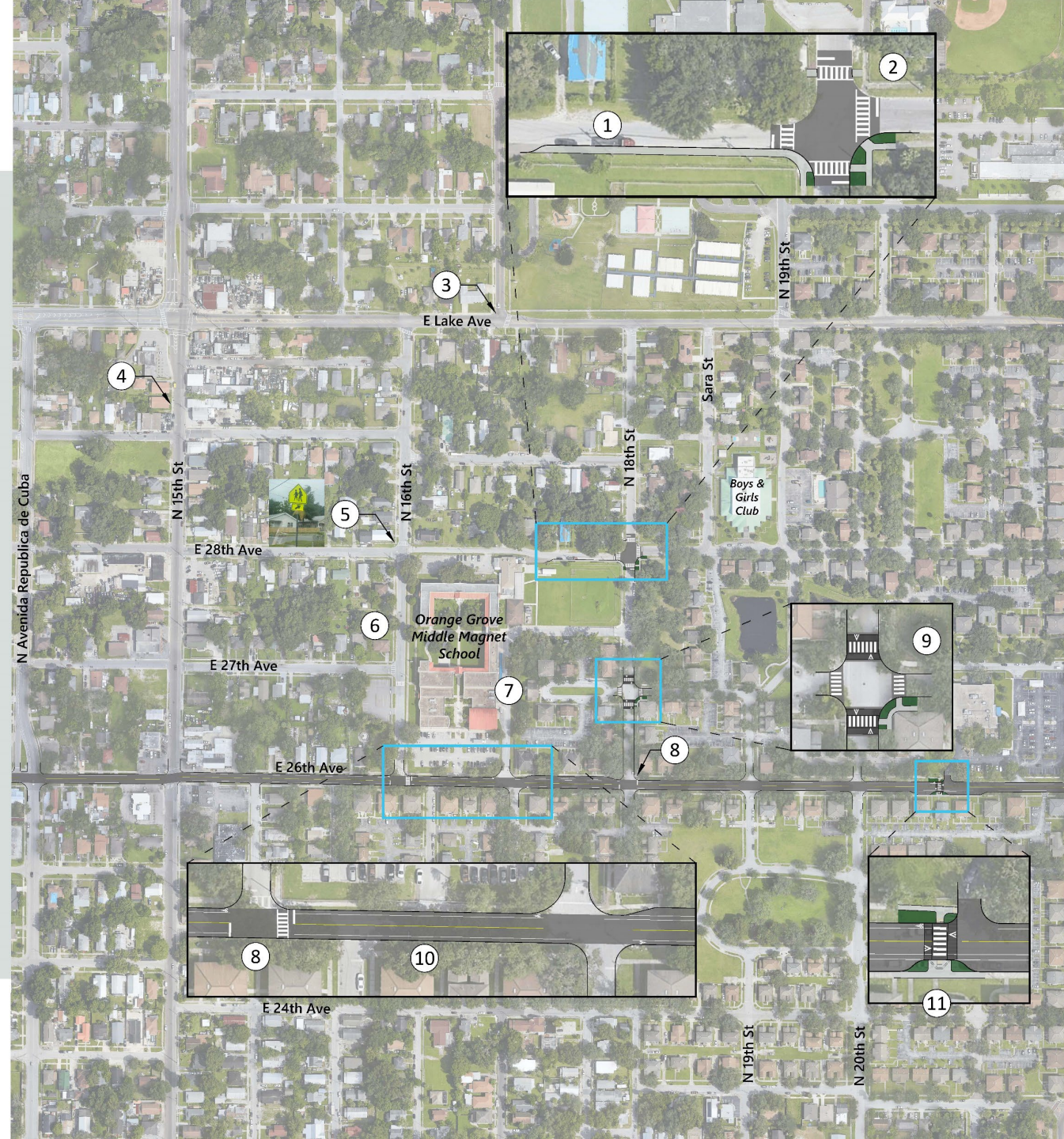
# TAMPA SCHOOL SAFETY



1. Add sidewalk for walkers exiting the school from the north
2. Install marked crosswalks and an All-Way stop.
3. Install All-Way Stop. Additionally, install a raised crosswalk on the east leg of the intersection or other traffic calming device.
4. Implement existing Complete Streets Improvements, which include walking and bicycling infrastructure, lane narrowing, and more frequent marked crosswalks.
5. Remove Pedestrian Crossing sign and install All-Way Stop.
6. Allow parking on one side of the roadway.
7. Update signage directing parents/guardians to the correct pick-up/drop-off location. The entrance to the car line is signed as Bus Only and there are signs on 26th Avenue directing drivers to 16th Street.
8. Install All-Way Stop.
9. Install marked crosswalks on all legs and raised crosswalks on the north and south legs.
10. Narrow travel lanes to 10 feet and add four-foot bike lanes.
11. Add a curb extension to reduce pedestrian crossing distance and install a raised crosswalk.
12. Bring existing School Speed Zone into compliance with State Statute and install flashers.

Orange Grove Magnet Middle School  
16th Street  
Tampa, Florida

Figure ES-6





# TAMPA SCHOOL SAFETY



1. Add a marked crosswalk and landscape median. Consider providing a raised crosswalk.
2. Open sidewalk gates during student arrival and dismissal.
3. Add a marked crosswalk and a sidewalk connection to high school. Consider providing a raised crosswalk.
4. Add a sidewalk on the west side of Trask Street.
5. Fix pedestrian push buttons, update the intersection to meet current ADA standards, and provide a bus shelter on the northeast corner. During field work, the pedestrian push button on the northeast corner of the intersection was not functioning.
6. Conduct signal warrant analysis. If warranted, signalize intersection and add crosswalks.
7. Implement the Lois Avenue Complete Streets Plan. Some components of the plan include narrowing existing travel lanes to accommodate four foot bike lanes, widening the sidewalk on the east side of the roadway north of I-275, and adding crosswalks on the side streets.
8. Install a sidewalk connection to the high school.
9. Tighten curb radius. Evaluate signalizing intersection. If intersection is signalized, add crosswalks.
10. Consider relocating the existing bus stops on both the north and south sides of Cypress Street to encourage users to cross at the marked crossing.
11. Bring existing School Speed Zones into compliance with State Statute and install flashers.
12. Add street trees and public amenities in accordance with the Westshore Alliance Master Plan.
13. Collaborate with the Westshore Alliance to implement painted intersections.

Jefferson High School  
West Cypress Street  
Tampa, Florida

Figure ES-7





# TAMPA SCHOOL SAFETY



1. Contemplate formalizing this parking lot as a pick-up area. A connection to the school along the property may be necessary when the parcel north of the schools is developed. Consider the extension of the West River Trail when planning the construction of the connection.
2. Install curb cuts and a sidewalk connection at marked crossing.
3. Consider allowing parking here or physically prevent people from parking on the north side of W Spruce Street west of N Oregon Avenue.
4. Implement painted intersection plan.
5. Implement a speed limit 15 or 20 mph on Spruce Street and Spruce Cove and enforce limit; consider dedicating Spruce Street back to the City for maintenance and enforcement.
6. Install a raised crosswalk and curb ramps connecting the end of the sidewalk to the south side of street, or relocate fence along south side of ball fields so that sidewalk can be used.
7. Bring existing School Speed Zone into compliance with State Statute and install flashers.
8. Improve temporary pedestrian walkway.
9. Remove Yield sign.
10. Reevaluate area circulation when development is completed to provide direct pedestrian connections from the neighborhood to the campuses
11. Install signage to prohibit stopping or standing.
12. Add a barrier between sidewalk and travel lane.
13. Optimize and coordinate signal timings.
14. Consider adding a marked crosswalk on the east side of the intersection.
15. Move fence to other side of sidewalk, or construct sidewalk on school property.

Implement educational and encouragement strategies detailed in the report including:

- Provide bicycle education, including helmet giveaway.
- Implement carpool program, targeting the Middle School and High School.
- Work with Blake High School to develop transportation safety videos targeted and K-12 students.
- Develop a walking routes program.

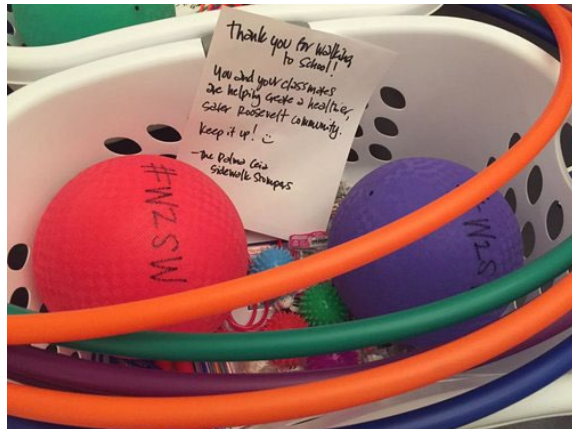
Just Elementary School, West Spruce Street  
 Stewart Middle School, West Spruce Street  
 Blake High School, North Boulevard  
 Tampa, Florida

Figure ES-8





# Encouragement and Educational Ideas



## TAMPA SCHOOL SAFETY STUDY | YARD SIGN DESIGN DEVELOPMENT

### Case Study Communities



### General Takeaways

- > Target audience is drivers = less is more
- > Visibility is crucial
- > Strong color contrast can help increase visibility
- > Work to trigger the emotional response / moral imperative to change behavior
- > Incorporate the why or for whom - for the children, for the young girl, etc.

### Proposed Taglines

- Theme: Safety for Children**
  - > Drive Like Your Kids Live Here
  - > Drive Like Your Kids Live Here...Because Ours Do
- Theme: School Zone**
  - > You are entering a School Safety Zone
- Theme: Speed**
  - > No Need to Speed
- Theme: Community**
  - > Hey I'm Walking Here



## WHO DO I CALL?

FOR LOS ANGELES NEIGHBORHOOD SERVICES

**Street Lights**  
CALL 311  
OR VISIT [www.lacounty.gov](http://www.lacounty.gov)

**Bulky Trash Pick-Up**  
CALL 311  
OR VISIT [www.lacounty.gov](http://www.lacounty.gov)

**Street Tree Trimming & Planting**  
CALL 311  
OR VISIT [www.lacounty.gov](http://www.lacounty.gov)

**Traffic Signals & Stop Signs**  
CALL 311  
OR VISIT [www.lacounty.gov](http://www.lacounty.gov)

**Traffic Crash**  
CALL 911  
OR VISIT [www.lacounty.gov](http://www.lacounty.gov)

**Potholes**  
CALL 311  
OR VISIT [www.lacounty.gov](http://www.lacounty.gov)

**CALL 311**  
FOR ALL CITY SERVICES

**ADDITIONAL PROGRAMS & SERVICES**

HEALTH | DWDM | COMMUNITY DEVELOPMENT | ANIMAL SERVICES | PUBLIC SAFETY | PUBLIC WORKS | PUBLIC UTILITIES | PUBLIC WORKS | PUBLIC UTILITIES | PUBLIC WORKS | PUBLIC UTILITIES

TO FIND YOUR CITY COUNCIL OFFICE, NEIGHBORHOOD COUNCIL, AND OTHER INFORMATION FOR YOUR NEIGHBORHOOD, VISIT [www.lacounty.gov](http://www.lacounty.gov)

[www.lacounty.gov](http://www.lacounty.gov) | [www.lacounty.gov](http://www.lacounty.gov) | [www.lacounty.gov](http://www.lacounty.gov) | [www.lacounty.gov](http://www.lacounty.gov)



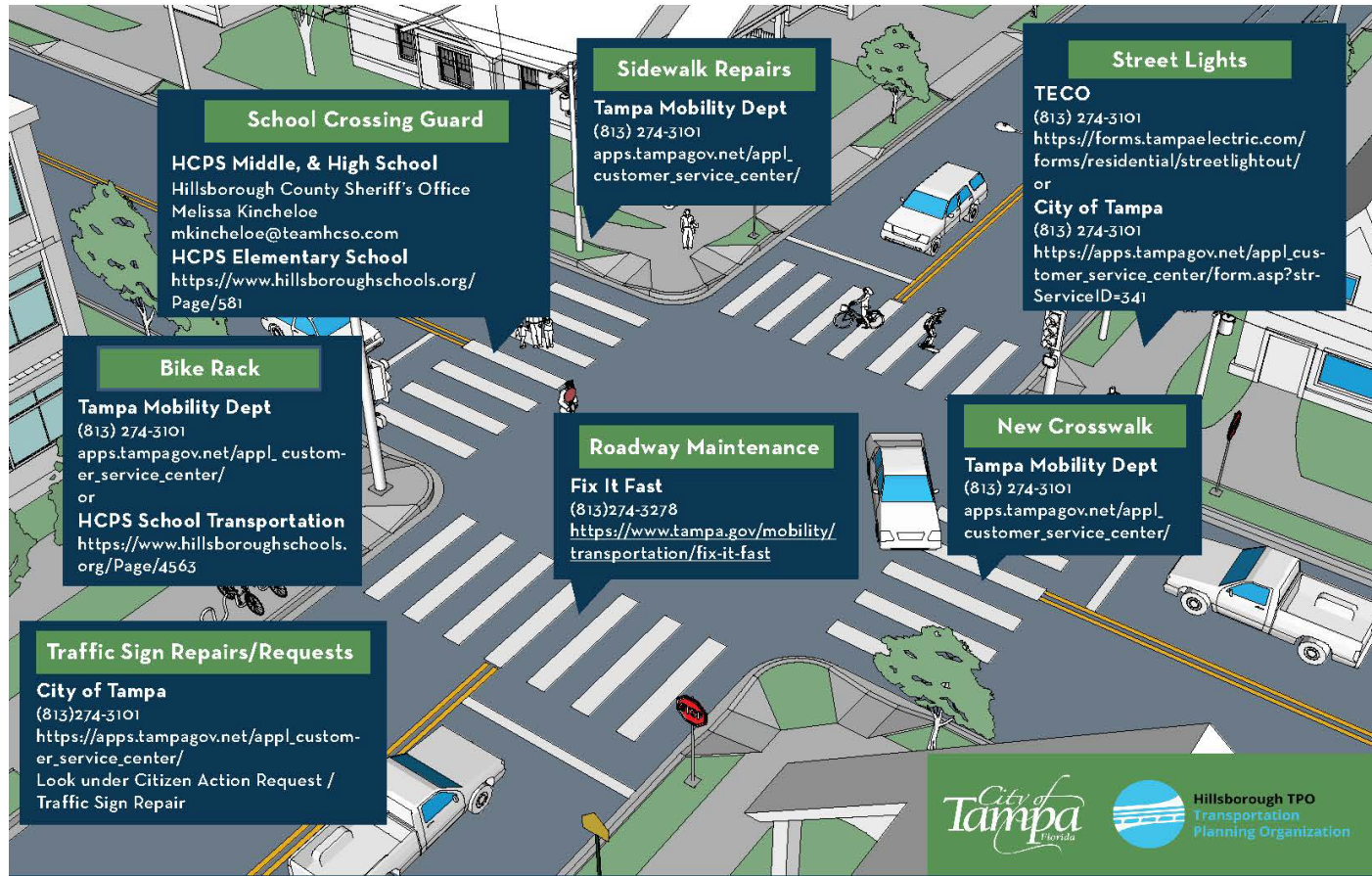


Paint Saves Lives – Crosswalks to Classroom, corridors



# WHO DO I CALL?

FOR SCHOOL AREA SAFETY SERVICES IN THE CITY OF TAMPA



## School Crossing Guard

**HCPS Middle, & High School**  
Hillsborough County Sheriff's Office  
Melissa Kincheloe  
mkincheloe@teamhcso.com  
**HCPS Elementary School**  
<https://www.hillsboroughschools.org/Page/581>

## Sidewalk Repairs

**Tampa Mobility Dept**  
(813) 274-3101  
[apps.tampagov.net/appl\\_customer\\_service\\_center/](https://apps.tampagov.net/appl_customer_service_center/)

## Street Lights

**TECO**  
(813) 274-3101  
<https://forms.tampaelectric.com/forms/residential/streetlightout/>  
or  
**City of Tampa**  
(813) 274-3101  
[https://apps.tampagov.net/appl\\_customer\\_service\\_center/form.asp?str\\_ServiceID=341](https://apps.tampagov.net/appl_customer_service_center/form.asp?str_ServiceID=341)

## Bike Rack

**Tampa Mobility Dept**  
(813) 274-3101  
[apps.tampagov.net/appl\\_customer\\_service\\_center/](https://apps.tampagov.net/appl_customer_service_center/)  
or  
**HCPS School Transportation**  
<https://www.hillsboroughschools.org/Page/4563>

## Roadway Maintenance

**Fix It Fast**  
(813) 274-3278  
<https://www.tampa.gov/mobility/transportation/fix-it-fast>

## New Crosswalk

**Tampa Mobility Dept**  
(813) 274-3101  
[apps.tampagov.net/appl\\_customer\\_service\\_center/](https://apps.tampagov.net/appl_customer_service_center/)

## Traffic Sign Repairs/Requests

**City of Tampa**  
(813) 274-3101  
[https://apps.tampagov.net/appl\\_customer\\_service\\_center/](https://apps.tampagov.net/appl_customer_service_center/)  
Look under Citizen Action Request / Traffic Sign Repair

## REPORT SAFETY CONCERNS

### TAMPA MOBILITY DEPT.

#### General Traffic

(813) 274-3101  
[apps.tampagov.net/appl\\_customer\\_service\\_center/](https://apps.tampagov.net/appl_customer_service_center/)

### TAMPA MOBILITY DEPT.

#### School Zone/Area Safety

(813) 274-3101  
[apps.tampagov.net/appl\\_customer\\_service\\_center/](https://apps.tampagov.net/appl_customer_service_center/)

### FDOT SAFE ROUTES TO SCHOOL PROGRAM, DISTRICT 7

#### School Zone Safety

<https://www.fdot.gov/Safety/programs/safe-routes-quicklinks.shtm>

### HILLSBOROUGH COUNTY PUBLIC SCHOOLS

#### Bus Stop Too Far or Unsafe

(813) 982-5500  
<https://www.hillsboroughschools.org/transportation>

## ENCOURAGE WALKING

### SIDEWALK STOMPERS

#### Walk to School Programs

Target Audience: All Ages  
<https://sidewalkstompers.org/>

## EDUCATIONAL PRESENTATIONS

### Bicycle Clinic

TARGET AUDIENCE: PE Class  
St. Joseph's Children's Wellness & Safety Center  
(813) 615-0938  
[kristi.nalls@baycare.org](mailto:kristi.nalls@baycare.org)

### Biking Walking Curriculum

TARGET AUDIENCE: 1st & 4th Grade  
MORE HEALTH, Inc.  
(813) 288-0378  
<https://www.morehealthinc.org/education/#Lessons-Grades-K-5>  
[clemaster@morehealthinc.org](mailto:clemaster@morehealthinc.org)

### Transportation Safety Presentation/Campaign

TARGET AUDIENCE: All Ages  
Bike/Walk Tampa Bay  
<https://walkbikedrive.org/>  
[JMBond@usf.edu](mailto:JMBond@usf.edu)

### Driver Safety Education

TARGET AUDIENCE: High School  
FDOT Community Traffic Safety Team  
<http://tampabaytrafficsafety.com/>

### Vision Zero Safety Speaker

TARGET AUDIENCE: All Ages  
<https://www.tampa.gov/visionzero>  
<https://planhillsborough.org/vision-zero/>

# TAMPA SCHOOL SAFETY



# DRIVE LIKE YOUR **KIDS** LIVE HERE



# BECAUSE **OURS** DO



YOUR  
LOGO  
HERE

Yard Sign Option 1



**DRIVE LIKE YOUR KIDS  
LIVE HERE**



**BECAUSE**

**OURS**

**DO**



# TAMPA SCHOOL SAFETY



YOUR  
LOGO  
HERE

Yard Sign Option 2



# TAMPA SCHOOL SAFETY



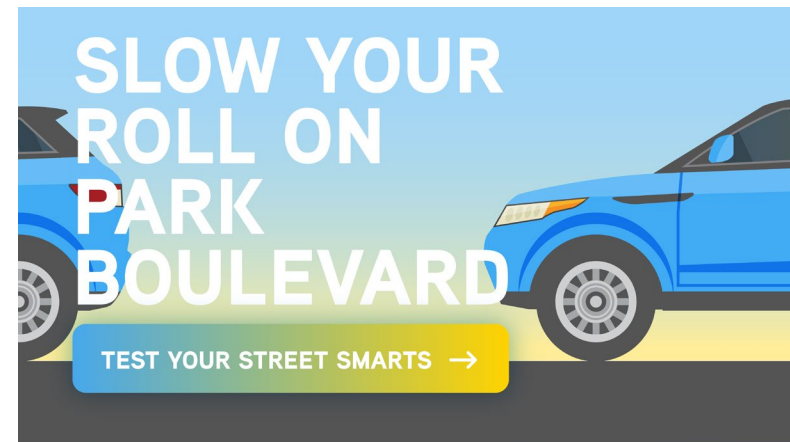
YOUR  
LOGO  
HERE

Yard Sign Option 3



# Enhanced Safe Routes to School Strategies

- **Establish Districtwide Transportation Planner Position**
- **Collaborate with Green Team**
- **Empower Tampa Youth to be Vision Zero Ambassadors**
- **Geofencing**
- **Speed Enforcement**
- **Automated Enforcement of Illegal Bus Passing**
- **School Streets**
- **Portable Speed Bumps**
- **Magnet School Busing Program**
- **Health Risk**





# Questions?

**More Information: [Planhillsborough.org/school/](https://planhillsborough.org/school/)**



**Hillsborough TPO Project  
Manager**  
**Lisa K. Silva, AICP, PLA**  
[silval@plancom.org](mailto:silval@plancom.org)

**City of Tampa Project Manger**  
**Kelly Fearon, PE**  
[kelly.fearon@tampagov.net](mailto:kelly.fearon@tampagov.net)

**Consultant Team Project  
Manager**  
**Kathrin Tellez, AICP, PTP, RSP1**  
[k.tellez@fehbrandpeers.com](mailto:k.tellez@fehbrandpeers.com)

