

# Sociocultural Data Report

## Greater Palm River

**Area:** 15.243 square miles  
**Jurisdiction(s):** **Cities:** Tampa  
**Counties:** Hillsborough

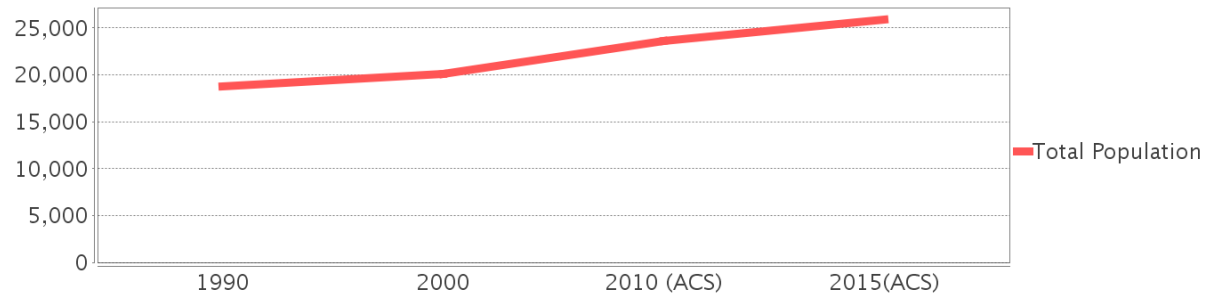
## General Population Trends

Description	1990	2000	2010 (ACS)	2015(ACS)
Total Population	18,762	20,137	23,568	25,881
Total Households	6,152	7,054	7,926	8,554
Average Persons per Acre	5.23	4.88	5.83	6.89
Average Persons per Household	2.96	2.78	2.90	2.98
Average Persons per Family	3.44	3.28	3.33	3.74
Males	9,108	9,674	11,602	13,002
Females	9,654	10,464	11,966	12,879

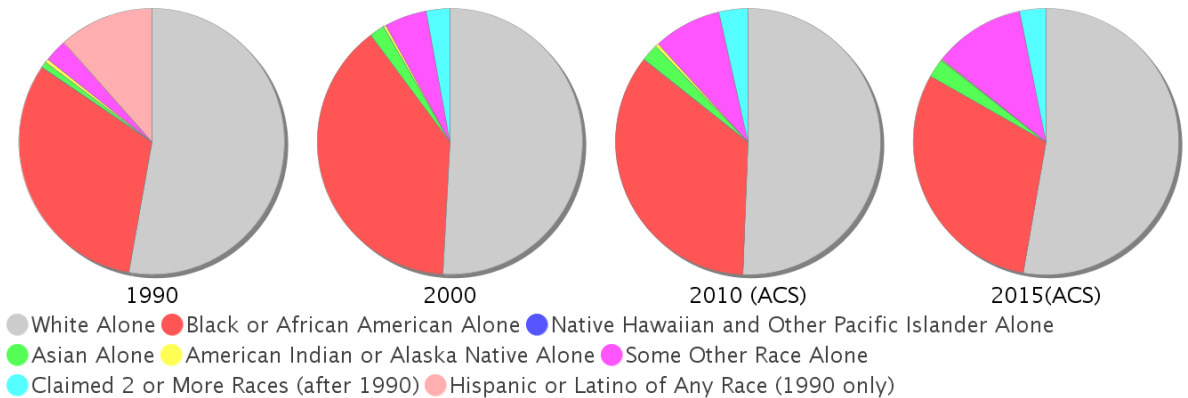
## Race and Ethnicity Trends

Description	1990	2000	2010 (ACS)	2015(ACS)
White Alone	11,208 (59.74%)	10,248 (50.89%)	11,922 (50.59%)	13,646 (52.73%)
Black or African American Alone	6,724 (35.84%)	7,837 (38.92%)	8,251 (35.01%)	7,888 (30.48%)
Native Hawaiian and Other Pacific Islander Alone	2 (0.01%)	0 (0.00%)	12 (0.05%)	0 (0.00%)
Asian Alone	151 (0.80%)	376 (1.87%)	501 (2.13%)	615 (2.38%)
American Indian or Alaska Native Alone	92 (0.49%)	57 (0.28%)	100 (0.42%)	21 (0.08%)
Some Other Race Alone	585 (3.12%)	1,041 (5.17%)	1,951 (8.28%)	2,886 (11.15%)
Claimed 2 or More Races	NA (NA)	579 (2.88%)	831 (3.53%)	825 (3.19%)
Hispanic or Latino of Any Race	2,463 (13.13%)	3,868 (19.21%)	8,435 (35.79%)	10,739 (41.49%)
Not Hispanic or Latino	16,299 (86.87%)	16,269 (80.79%)	15,133 (64.21%)	15,142 (58.51%)
Minority	9,346 (49.81%)	12,319 (61.18%)	17,173 (72.87%)	19,559 (75.57%)

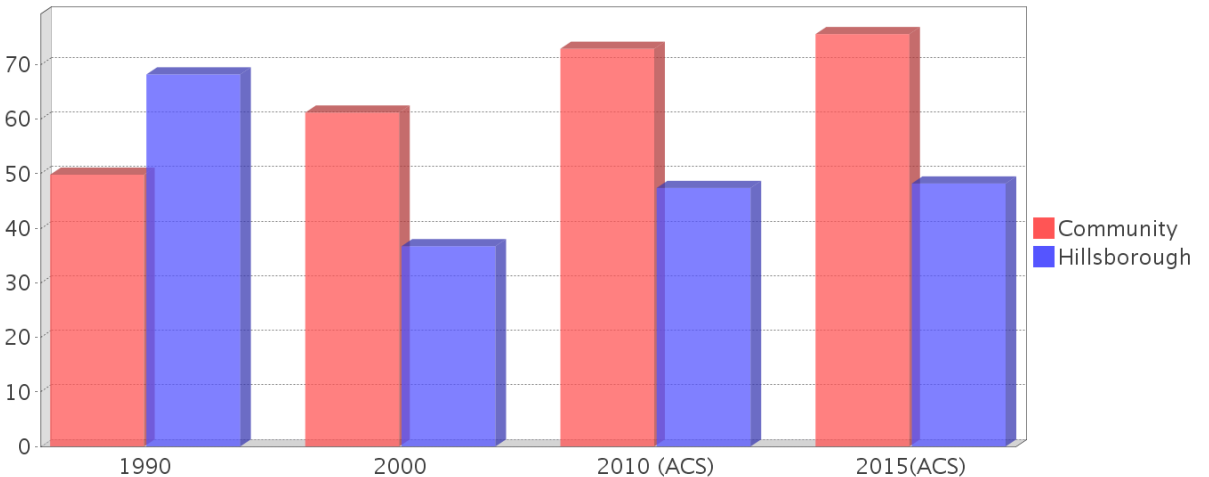
## Population



## Race



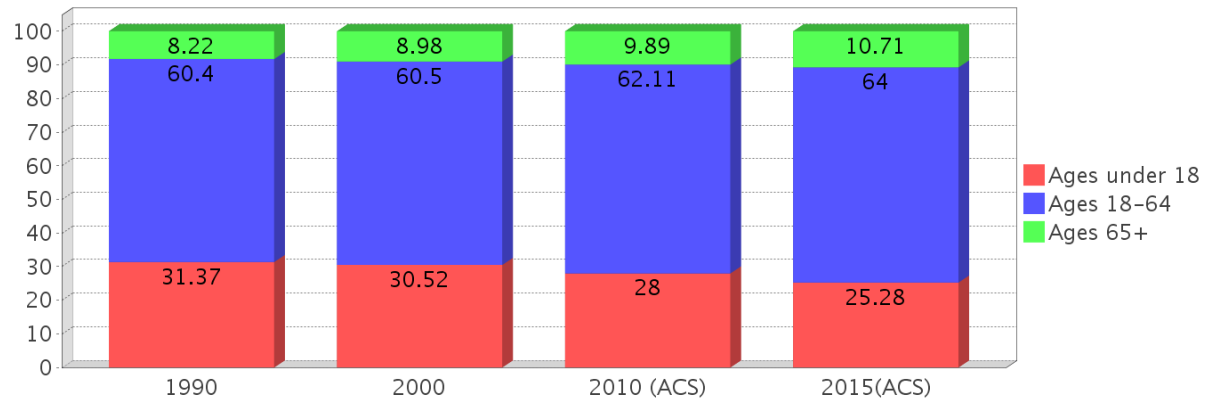
## Minority Percentage Population



### Age Trends

Description	1990	2000	2010 (ACS)	2015(ACS)
Under Age 5	8.33%	7.61%	7.94%	6.55%
Ages 5-17	23.05%	22.91%	20.07%	18.73%
Ages 18-21	6.17%	4.97%	6.01%	5.04%
Ages 22-29	12.27%	10.26%	10.64%	11.13%
Ages 30-39	15.54%	15.05%	14.24%	14.18%
Ages 40-49	12.54%	14.48%	14.14%	15.96%
Ages 50-64	13.87%	15.74%	17.08%	17.69%
Age 65 and Over	8.22%	8.98%	9.89%	10.71%
-Ages 65-74	5.52%	6.29%	6.19%	5.88%
-Ages 75-84	2.19%	2.08%	2.97%	3.94%
-Age 85 and Over	0.52%	0.61%	0.73%	0.88%
Median Age	NA	34	35	35

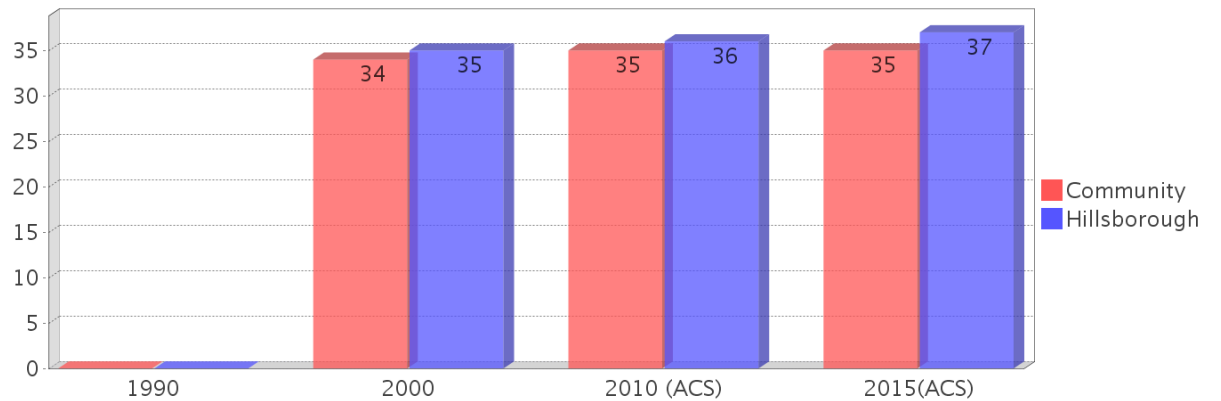
### Population by Age Group



### Income Trends

Description	1990	2000	2010 (ACS)	2015(ACS)
Median Household Income	\$23,596	\$35,278	\$36,827	\$34,223
Median Family Income	\$28,591	\$37,500	\$40,870	NA
Population below Poverty Level	19.97%	16.96%	20.57%	24.61%
Households below Poverty Level	17.26%	14.30%	20.86%	22.25%
Households with Public Assistance Income	9.41%	4.89%	1.83%	3.33%

### Median Age Comparison

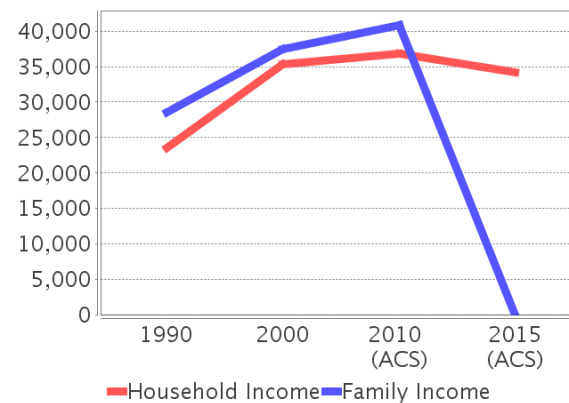


### Disability Trends

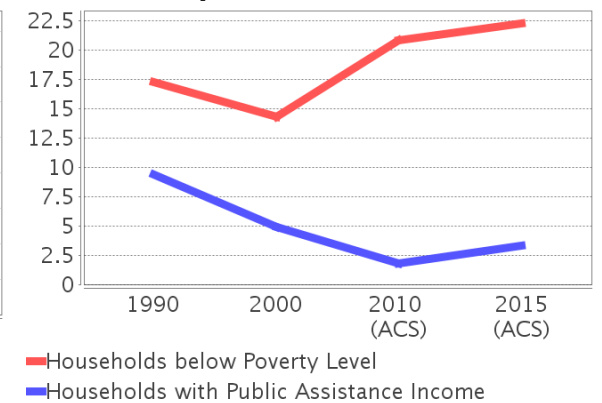
See the Data Sources section below for an explanation about the differences in disability data among the various years.

Description	1990	2000	2010 (ACS)	2015(ACS)
Population 16 To 64 Years with a disability	1534 (11.32%)	3640 (19.58%)	(NA)	(NA)
Population 20 To 64 Years with a disability	(NA)	(NA)	(NA)	2329 (14.47%)

### Income Trends



### Poverty and Public Assistance



## Educational Attainment Trends

Age 25 and Over

Description	1990	2000	2010 (ACS)	2015(ACS)
Less than 9th Grade	1,549 (13.93%)	1,262 (10.34%)	1,199 (8.11%)	1,539 (9.07%)
9th to 12th Grade, No Diploma	2,968 (26.69%)	2,572 (21.08%)	2,013 (13.61%)	2,559 (15.08%)
High School Graduate or Higher	6,604 (59.38%)	8,368 (68.58%)	11,575 (78.28%)	12,866 (75.84%)
Bachelor's Degree or Higher	488 (4.39%)	1,217 (9.97%)	2,014 (13.62%)	2,644 (15.59%)

## Language Trends

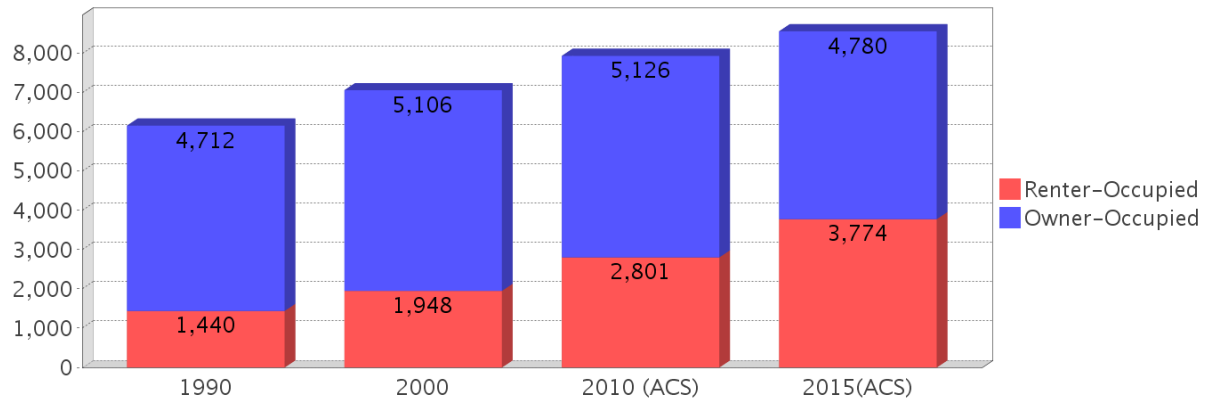
Age 5 and Over

Description	1990	2000	2010 (ACS)	2015(ACS)
Speaks English Well	604 (3.51%)	747 (4.01%)	1,558 (7.18%)	1,464 (6.05%)
Speaks English Not Well	NA (NA)	703 (3.78%)	1,414 (6.52%)	1,677 (6.93%)
Speaks English Not at All	NA (NA)	525 (2.82%)	791 (3.65%)	1,279 (5.29%)
Speaks English Not Well or Not at All	524 (3.05%)	1,228 (6.60%)	2,205 (10.17%)	2,956 (12.22%)

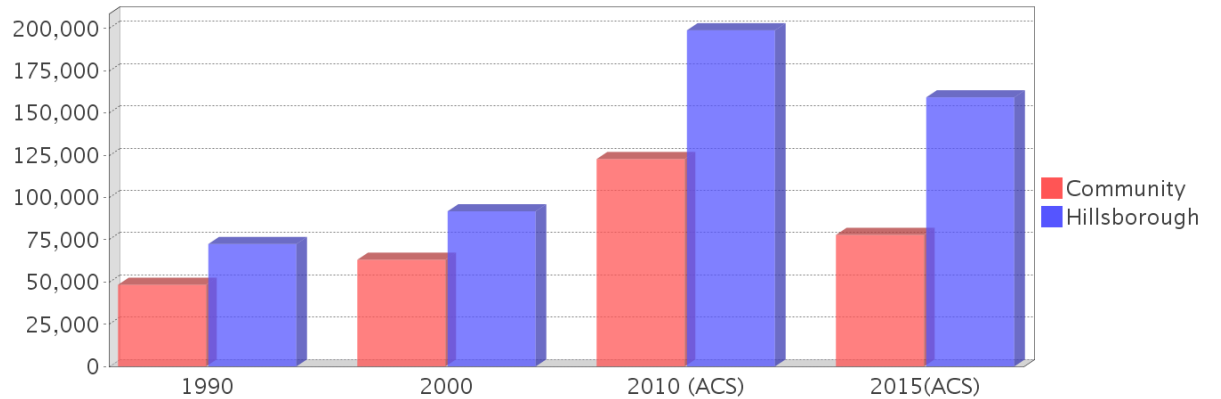
## Housing Trends

Description	1990	2000	2010 (ACS)	2015(ACS)
Total	6,718	7,674	8,831	9,356
Units per Acre	0.60	0.70	0.76	0.79
Single-Family Units	4,770	5,715	6,442	6,623
Multi-Family Units	358	1,013	1,542	1,744
Mobile Home Units	965	931	963	976
Owner-Occupied Units	4,712	5,106	5,126	4,780
Renter-Occupied Units	1,440	1,948	2,801	3,774
Vacant Units	566	620	904	801
Median Housing Value	\$48,300	\$63,100	\$122,700	\$77,800
Occupied Housing Units w/No Vehicle	469 (7.62%)	595 (8.43%)	539 (6.80%)	590 (6.90%)

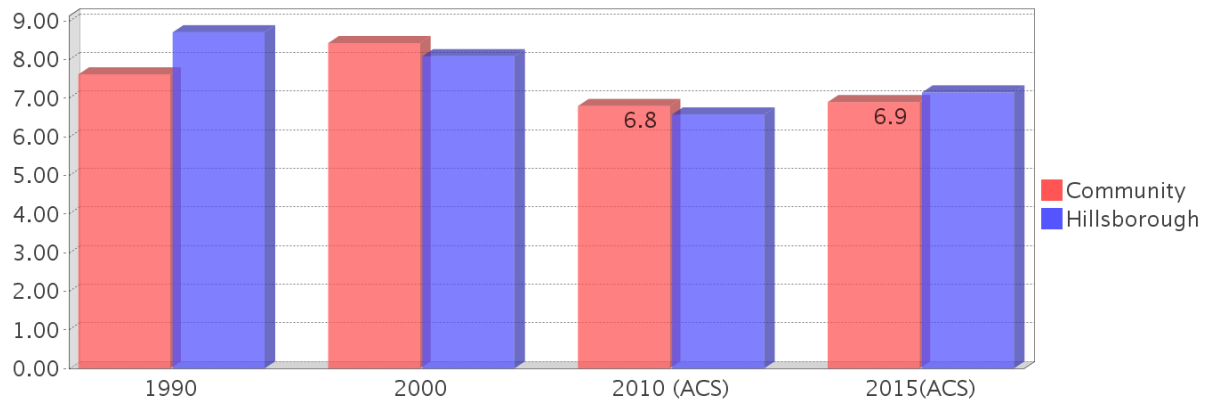
## Housing Tenure



## Median Housing Value Comparison

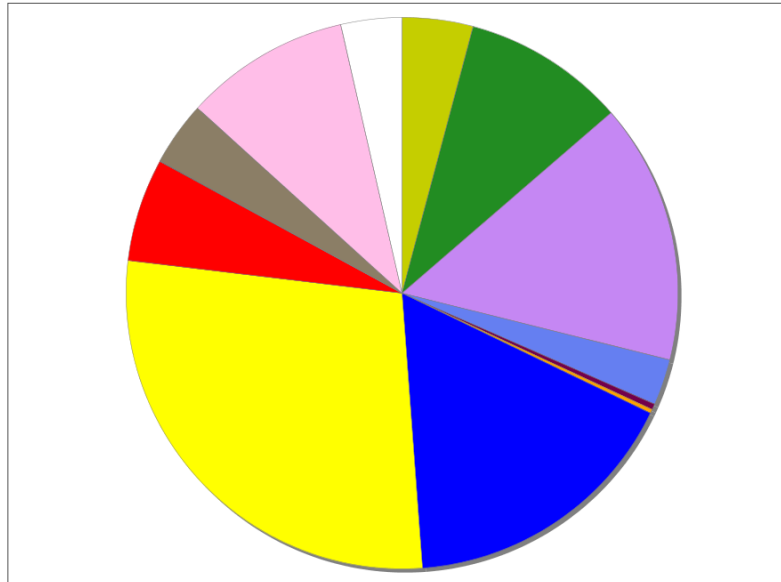


## Occupied Units With No Vehicles Available



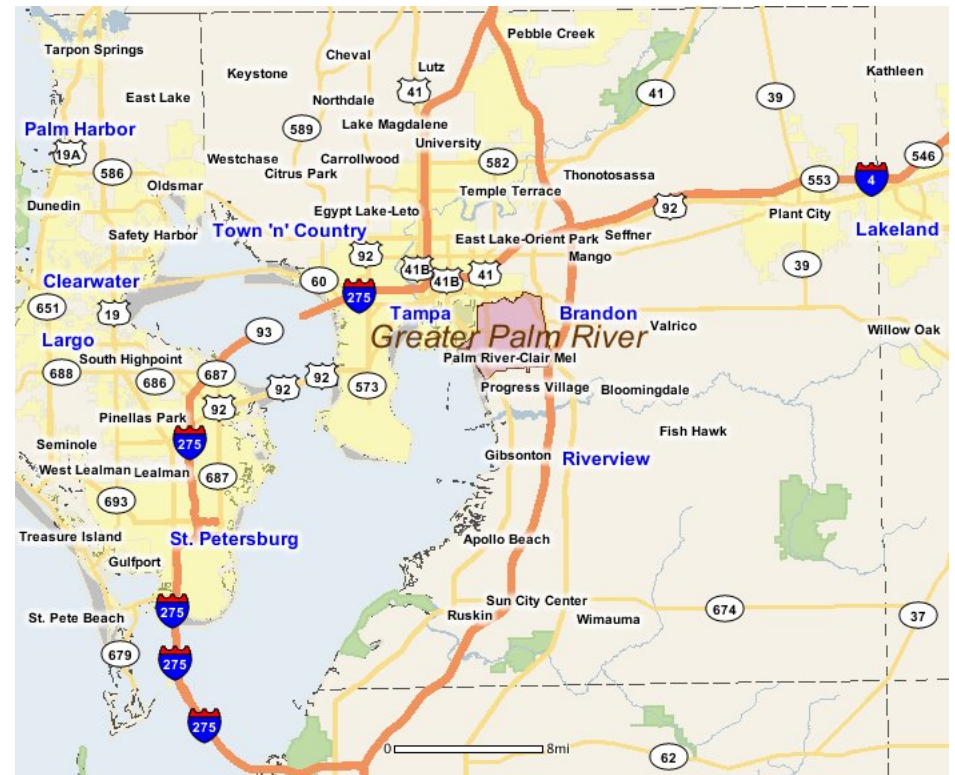
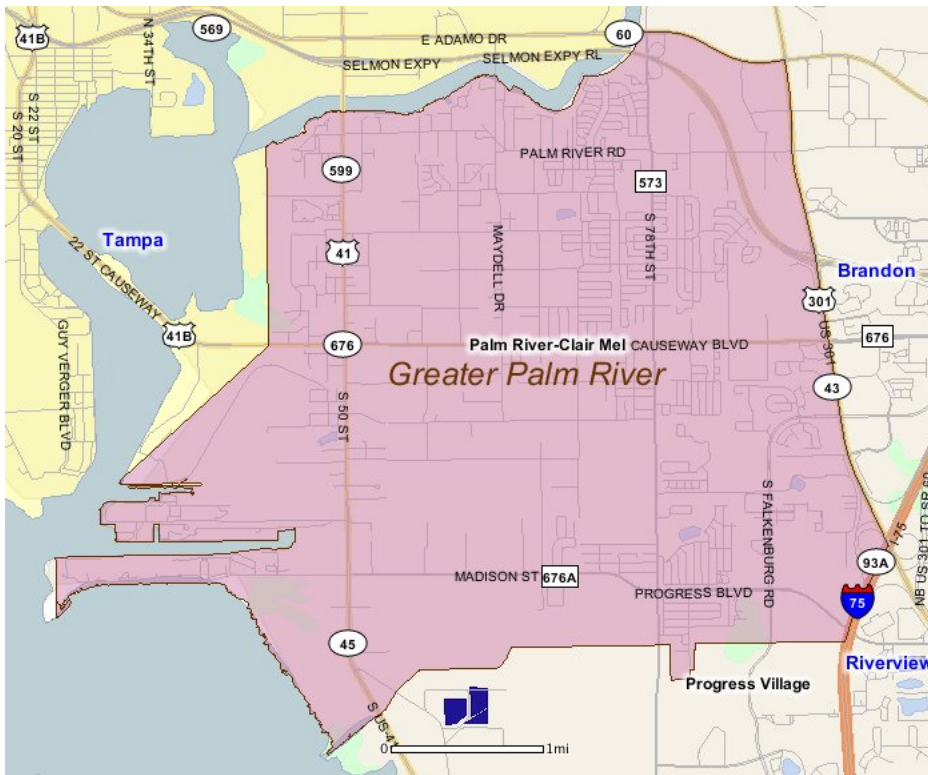
## Existing Land Use

Land Use Type	Acres	Percentage
Acreage Not Zoned For Agriculture	358	3.67%
Agricultural	818	8.38%
Centrally Assessed	0	0.00%
Industrial	1,311	13.44%
Institutional	230	2.36%
Mining	29	0.30%
Other	20	0.21%
Public/Semi-Public	1,434	14.70%
Recreation	0	0.00%
Residential	2,414	24.74%
Retail/Office	521	5.34%
Row	2	0.02%
Vacant Residential	324	3.32%
Vacant Nonresidential	836	8.57%
Water	0	0.00%
Parcels With No Values	306	3.14%



- Acreage Not Zoned For Agriculture
- Agricultural
- Centrally Assessed
- Industrial
- Institutional
- Mining
- Other
- Public/Semi-Public
- Recreation
- Residential
- Retail/Office
- Row
- Vacant Residential
- Vacant Nonresidential
- Water
- Parcels With No Values

## Location Maps



---

## Community Facilities

The community facilities information below is useful in a variety of ways for environmental evaluations. These community resources should be evaluated for potential sociocultural effects, such as accessibility and relocation potential. The facility types may indicate the types of population groups present in the project study area. Facility staff and leaders can be sources of community information such as who uses the facility and how it is used. Additionally, community facilities are potential public meeting venues.

### Assisted Housing (Points)

Facility Name	Address	Zip Code
WINDERMERE	9474 WINDERMERE LAKE DRIVE	33569
BRISTOL BAY	1241 S 50TH ST	33619
FOUNTAINS AT FALKENBURG	4409 TUSCANY GLEN CIRCLE	33619
WINDERMERE II	9474 WINDERMERE LAKE DRIVE	33569
BLESSED SACRAMENT MANOR	6915 12 AVENUE SOUTH	33619
RIVERGATE APARTMENTS	7702 RIVERGATE DR	33619

### Community Boundaries (User defined)

Facility Name
Greater Palm River
Riverview
Brandon
SouthShore

### Community Centers (Points)

Facility Name	Address	Zip Code
KNIGHTS OF COLUMBUS 5092 - FATHER RAGHEED GANNI	7001 12TH AVE S	33619
BOYS & GIRLS CLUB - TAMPA	7605 DESTIN DR	33619

### Cultural Centers (Points)

Facility Name	Address	Zip Code
78TH STREET COMMUNITY LIBRARY - TAMPA HILLSBOROUGH COUNTY PUBLIC LIBRARY	7625 PALM RIVER RD	33619

### Fire Stations (Points)

Facility Name	Address	Zip Code
PROGRESS VILLAGE FIRE DEPARTMENT STATION 1	3308 S 78TH ST	33619
PALM RIVER FIRE DEPARTMENT STATION 15	715 S 58TH ST	33619

### Florida Parks and Recreational Facilities (Points)

Facility Name	Address	Zip Code
PALM RIVER PARK	725 S 58TH ST	33619
RUBIN E PADGETT PARK	724 S 58TH ST	33619
WINSTON PARK	7605 DESTIN RD	33619
PROGRESS VILLAGE PARK	8701 PROGRESS BLVD	33619
PROGRESS VILLAGE SC	5725 S 78TH ST	33619
SIMMON BOWER PARK	5208 S 86TH ST	33619
CAUSEWAY PARK	2810 90TH ST	33569

### Healthcare Facilities (Geocoded)

Facility Name	Address	Zip Code
CAUSEWAY MEDICAL CLINIC	7108 CAUSEWAY BOULEVARD	33619
SANDEL'S PRIMARY HEALTH CARE CENTER	7750 PALM RIVER ROAD	33619
PALM RIVER COMMUNITY HEALTH CENTER	7728 PALM RIVER ROAD	33619
MILLER CHIROPRACTIC AND MEDICAL CENTERS INC	1011 US HWY 301 S	33619
PALM RIVER MEDICAL CENTER	1030 S 78TH STREET	33619

### Law Enforcement Facilities (Points)

Facility Name	Address	Zip Code
HILLSBOROUGH COUNTY SHERIFF'S OFFICE PALM RIVER COMMUNITY STATION	7460 PALM RIVER RD	33619
HILLSBOROUGH COUNTY SHERIFF'S OFFICE WINDEMERE SUBSTATION	2902 WINDEMERE PARK CR	33569
US BUREAU OF ALCOHOL, TOBACCO AND FIREARMS TAMPA FIELD OFFICE GROUP 2,4	923 US HIGHWAY 301 SOUTH	33602
HILLSBOROUGH COUNTY SHERIFF'S OFFICE PROGRESS VILLAGE COMMUNITY STATION	7935 FLOWER AVE	33619

### Mobile Home Parks in Florida

Facility Name	Address	Zip Code
MADISON LANE ESTATES	5353 MADISON LANE ESTATES	33619
PALM RIVER TP	506 50TH ST S	33619
RIVER BAY MHP	411 RIVER BAY DR	33619
JL MOBILE HOME PARK	2310 50TH ST S	33619

### Public and Private Schools (Points)

Facility Name	Address	Zip Code
BING ELEMENTARY SCHOOL	6409 36TH AV S	33619
PALM RIVER ELEMENTARY SCHOOL	805 MAYDELL DRIVE	33619
ECLP ADMINISTRATION	207 KELSEY LANE	33619
HARVEST TIME CHRISTIAN SCHOOL	1511 S US HIGHWAY 301	33619
PROGRESS VILLAGE ACADEMY	8616 PROGRESS BLVD	33619
DOWDELL MIDDLE SCHOOL	1208 WISHING WELL WAY	33619
FROST ELEMENTARY SCHOOL	3950 FALKENBURG ROAD	33619
LITERACY/LEADERSHIP/TECHNOLOGY ACADEMY	6771 MADISON AVE	33619
GIUNTA MIDDLE SCHOOL	4202 FALKENBURG ROAD	33619
CLAIR MEL ELEMENTARY SCHOOL	1025 S 78TH STREET	33619
PROGRESS VILLAGE MIDDLE SCHOOL	8113 ZINNIA DRIVE	33619

### Religious Centers (Points)

Facility Name	Address	Zip Code
BETHANY MISSIONARY BAPTIST CHURCH	5814 58TH STREET COURT	33619
CHURCH OF CHRIST OF SOUTHSIDE	6411 12TH AVENUE SOUTH	33619
IGLESIA CRISTIANA OASIS DE AMO	6922 20TH AVENUE SOUTH	33619
PEACE RESTORATION MINISTRIES	2807 CLIFFORD SAMPLE DRIVE	33619
HARVEST TIME MEMORIAL CHURCH	1511 SOUTH UNITED STATES HIGHWAY 301	33619
KEENEY CHAPEL UNITED METHODIST CHURCH	7735 DESTIN DRIVE	33619
LAMB OF GOD CHRISTIAN CENTER	5707 31ST AVENUE SOUTH	33619
SECOND PENTECOSTAL CHURCH ARCH	3402 MAYDELL DR	33619
BETHEL CHRISTIAN CENTER	6602 CAUSEWAY BOULEVARD	33619
NEW ST MATTHEWS MISSIONARY	1006 S 50TH STREET	33619
WAT MONGKOLRATANARAM OF FLORIDA	5306 PALM RIVER RD	33619
VICTORY FREEWELL BAPTIST	7504 CAUSEWAY BOULEVARD	33619
EAST TAMPA CHRISTIAN CHURCH	7824 24TH AVENUE SOUTH	33619
NEW LIFE ASSEMBLY	5010 12TH AVENUE SOUTH	33619
FIRST BAPTIST CHURCH	5415 PALM RIVER ROAD	33619
IGLESIA DE DIOS PENTECOSTAL M E	7417 12TH AVE S	33619
EL BETHEL TABERNACLE UNITED PENTECOSTAL	2121 S 78TH ST	33619
CONGREGATION MITA	4903 S 78TH ST	33619
JEHOVAH'S WITNESSES	4802 17TH AVENUE SOUTH	33619
SAINT CECILIA EPISCOPAL CHURCH	1920 MAYDELL DRIVE	33619
BLESSED SACRAMENT CHURCH	7001 12TH AVENUE	33619
MISSION MARRANTHA CHURCH	6802 PALM RIVER ROAD	33619
CAUSEWAY BAPTIST CHURCH	3015 S 75TH STREET	33619
FIRST BAPTIST CHURCH	8616 PROGRESS BOULEVARD	33619
WORD ALIVE CHURCH	1024 S 78TH STREET	33619
PALM RIVER CHURCH OF CHRIST	8015 PALM RIVER RD	33619
CHURCH OF THE LIVING GOD TAMPA	3015 S 54TH ST	33619

Facility Name	Address	Zip Code
IGLESIA CRISTIANA DE AVIVAMIENTO ASSEMBLY OF GOD	2151 SOUTH 78TH STREET	33619
FAITH & TRUTH REVEALED MINISTRIES	7029 FLINT DR	33619
NEW BETHEL TEMPLE OF DELIVERANCE	6221 PALM RIVER RD	33619
CLAIR MEL FIRST ASSEMBLY-GOD	2415 S 78TH STREET	33619
ST JOSEPH MISSIONARY BAPT CHURCH	5914 S 78TH STREET	33619
ETHIOPIAN ORTHODOX CHURCH	2418 S 86TH STREET	33619
IGLESIA CRISTIANA PRINCIPE D	7506 CAUSEWAY BOULEVARD	33619
LIFE CHURCH INTERNATIONAL MINISTRIES	1234 S 82ND ST	33619
PALM RIVER CHURCH OF GOD	1304 S 58TH STREET	33619
FLORIDA BUDDHIST VIHARA INC	2208 MAYDELL DR	33619
ST JAMES AME CHURCH	5202 S 86TH STREET	33619
NEW LIFE FAMILY WORSHIP	3205 US HIGHWAY 301 SOUTH	33578

## US Census Places

### Facility Name

Brandon

Tampa

Progress Village

Palm River-Clair Mel

Riverview

---

## Block Groups

The following Census Block Groups were used to calculate demographics for this report.

### 1990 Census Block Groups

120570135022, 120570136002, 120570137001, 120570133015, 120570135012, 120570135021, 120570135023, 120570136001, 120570137004, 120570135011, 120570137002, 120570135024, 120570137003, 120570135025, 120570136009, 120570136004, 120570137008, 120570137007

### 2000 Census Block Groups

120570135032, 120570135034, 120570135052, 120570136011, 120570136022, 120570135053, 120570135051, 120570136021, 120570137022, 120570137011, 120570137013, 120570135012, 120570137021, 120570137025, 120570135041, 120570135031, 120570135043, 120570135054, 120570135033, 120570135042, 120570137023, 120570133063, 120570135011, 120570136023, 120570122056

### 2010 Census Block Groups

120570135031, 120570135043, 120570135042, 120570137032, 120570135051, 120570137023, 120570137021, 120570135041, 120570136021, 120570135032, 120570135033, 120570136041, 120570135053, 120570137043, 120570135012, 120570135052, 120570135011, 120570136022, 120570137022, 120570137031, 120570133151

### 2015 Census Block Groups

120570135043, 120570137022, 120570135051, 120570133151, 120570137032, 120570137031, 120570136021, 120570136041, 120570135041, 120570135053, 120570137021, 120570135012, 120570135032, 120570135052, 120570135042, 120570137023, 120570135011, 120570135031, 120570135033, 120570136022, 120570137043

---

## Data Sources

### Area

The geographic area of the community based on a user-specified community boundary or area of interest (AOI) boundary.

### Jurisdiction

Jurisdiction(s) includes local government boundaries that intersect the community or AOI boundary.

### Demographic Data

Demographic data reported under the headings General Population Trends, Race and Ethnicity Trends, Age Trends, Income Trends, Educational Attainment Trends, Language Trends, and Housing Trends is from the U.S. Decennial Census (1990, 2000) and the American Community Survey (ACS) 5-year estimates from 2006-2010 and 2011-2015. The data was gathered at the block group level for user-specified community boundaries and AOIs, and at the county level for counties. Depending on the dataset, the data represents 100% counts (Census Summary File 1) or sample-based information (Census Summary File 3 or ACS).

### About the Census Data:

User-specified community boundaries and AOIs do not always correspond precisely to block group boundaries. In these instances, adjustment of the geographic area and data for affected block groups is required to estimate the actual population. To improve the accuracy of such estimates in the SDR report, the census block group data was adjusted to exclude all census blocks with a population of two or fewer. These areas were eliminated from the corresponding years' block groups. Next, the portion of the block group that lies outside of the community or AOI boundary was removed. The



demographics within each block group were then recalculated, assuming an equal area distribution of the population. Note that there may be areas where there is no population.

Use caution when comparing the 100% count data (Decennial Census) to the sample-based data (ACS). In any given year, about one in 40 or 2.5% of U.S. households will receive the ACS questionnaire. Over any five-year period, about one in eight households will receive the questionnaire, as compared to about one in six that received the long form questionnaire for the Decennial Census 2000. (Source: <http://mcdc.missouri.edu/pub/data/acs/Readme.shtml>) The U.S. Census Bureau provides help with this process:

[http://www.census.gov/acs/www/guidance\\_for\\_data\\_users/comparing\\_2015/](http://www.census.gov/acs/www/guidance_for_data_users/comparing_2015/)

Use caution when interpreting changes in Race and Ethnicity over time. Starting with the 2000 Decennial Census, respondents were given a new option of selecting one or more race categories. Also in 2000, the placement of the question about Hispanic origin changed, helping to increase responsiveness to the Hispanic-origin question. Because of these and other changes, the 1990 data on race and ethnicity are not directly comparable with data from later censuses. (Source: <http://www.census.gov/prod/2001pubs/c2kbr01-1.pdf>; <http://www.census.gov/pred/www/rpts/Race%20and%20Ethnicity%20FINAL%20report.pdf>)

The "Minority" calculations are derived from Census and ACS data using both the race and ethnicity responses. On this report, "Minority" refers to individuals who list a race other than White and/or list their ethnicity as Hispanic/Latino. In other words, people who are multi-racial, any single race other than White, or Hispanic/Latino of any race are considered minorities.

Disability data is not included in the 2010 Decennial Census, or the 2006-2010 ACS. This data is available in the 2011-2015 ACS.

Because of changes made to the Census and ACS questions between 1990 and 2015, disability variables should not be compared from year to year. For example: 1) With the 1990 data the disabilities are listed as a "work disability" while this distinction is not made with 2000 or 2015 ACS data; 2) The 2015 ACS data includes the institutionalized population (e.g. persons in prisons and group homes), while this population is not included in 1990 or 2000; 3) the age groupings changed over the years.

Please take the following two concerns into account when viewing this data: 1) With the 1990 data the disabilities are listed as a "work disability" while this distinction is not made with 2000 or 2015 ACS data; 2) The 2015 ACS data includes the institutionalized population (e.g. persons in prisons and group homes), while this population is not included in 1990 or 2000.

The category Bachelor's Degree or Higher under the heading Educational Attainment Trends is a subset of the category High School Graduate or Higher.

Income of households. This includes the income of the householder and all other individuals 15 years old and over in the household, whether they are related to the householder or not. Because many households consist of only one person, average household income is usually less than average family income.

Income of families. In compiling statistics on family income, the incomes of all members 15 years old and over related to the householder are summed and treated as a single amount.

Age Trends median age for 1990 is not available.

### **Land Use Data**

The Land Use information Indicates acreages and percentages for the generalized land use types used to group parcel-specific, existing land use assigned by the county property appraiser office according to the Florida Department of Revenue land use codes.

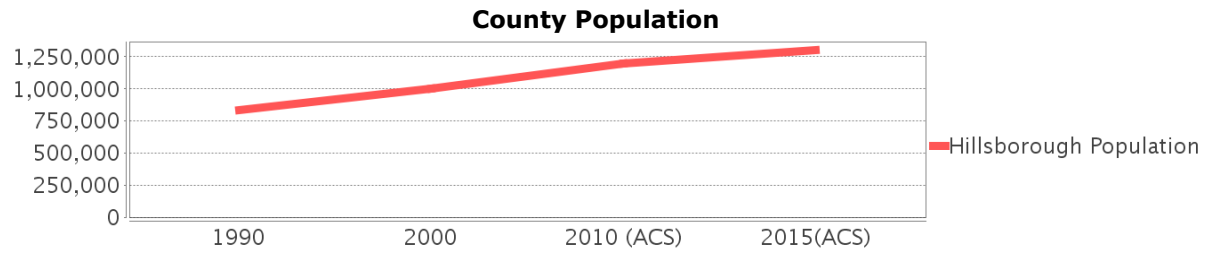
## Community Facilities Data

- Assisted Rental Housing Units - Identifies multifamily rental developments that receive funding assistance under federal, state, and local government programs to offer affordable housing as reported by the Shimberg Center for Housing Studies, University of Florida.
- Mobile Home Parks - Identifies approved or acknowledged mobile home parks reported by the Florida Department of Business and Professional Regulation and Florida Department of Health.
- Migrant Camps - Identifies migrant labor camp facilities inspected by the Florida Department of Health.
- Group Care Facilities - Identifies group care facilities inspected by the Florida Department of Health.
- Community Center and Fraternal Association Facilities - Identifies facilities reported by multiple sources.
- Law Enforcement Correctional Facilities - Identifies facilities reported by multiple sources.
- Cultural Centers - Identifies cultural centers including organizations, buildings, or complexes that promote culture and arts (e.g., aquariums and zoological facilities; arboreta and botanical gardens; dinner theaters; drive-ins; historical places and services; libraries; motion picture theaters; museums and art galleries; performing arts centers; performing arts theaters; planetariums; studios and art galleries; and theater producers stage facilities) reported by multiple sources.
- Fire Department and Rescue Station Facilities - Identifies facilities reported by multiple sources.
- Government Buildings - Identifies local, state, and federal government buildings reported by multiple sources.
- Health Care Facilities - Identifies health care facilities including abortion clinics, dialysis clinics, medical doctors, nursing homes, osteopaths, state laboratories/clinics, and surgicenters/walk-in clinics reported by the Florida Department of Health.
- Hospital Facilities - Identifies hospital facilities reported by multiple sources.
- Law Enforcement Facilities - Identifies law enforcement facilities reported by multiple sources.
- Parks and Recreational Facilities - Identifies parks and recreational facilities reported by multiple sources.
- Religious Center Facilities - Identifies religious centers including churches, temples, synagogues, mosques, chapels, centers, and other types of religious facilities reported by multiple sources.
- Private and Public Schools - Identifies private and public schools reported by multiple sources.
- Social Service Centers - Identifies social service centers reported by multiple sources.
- Veteran Organizations and Facilities

# Hillsborough County Demographic Profile

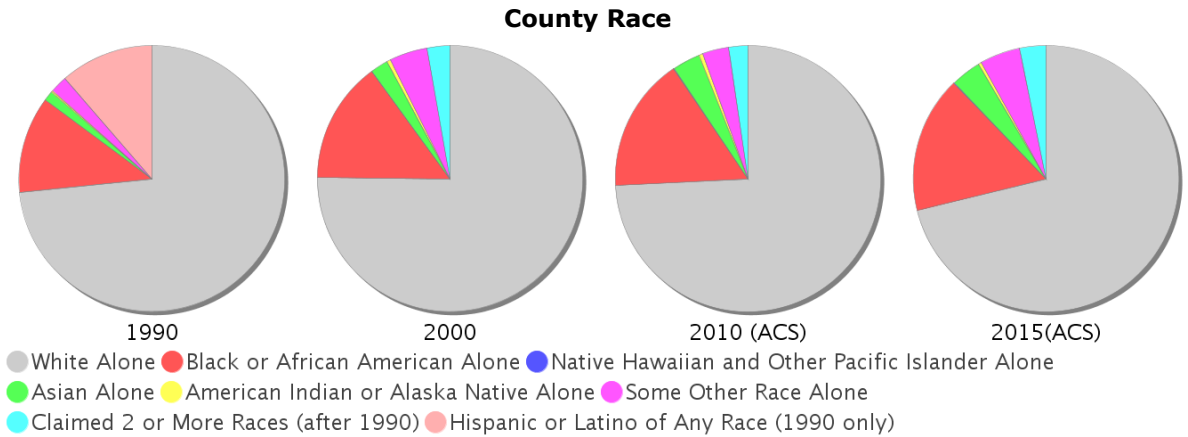
## General Population Trends - Hillsborough

Description	1990	2000	2010 (ACS)	2015(ACS)
Total Population	834,054	998,948	1,200,236	1,302,884
Total Households	324,872	391,357	462,447	486,078
Average Persons per Acre	1.216	1.458	1.751	1.90
Average Persons per Household	2.567	2.508	3.00	2.64
Average Persons per Family	3.106	3.156	3.262	3.375
Males	406,217	488,596	585,512	635,632
Females	427,837	510,352	614,724	667,252



## Race and Ethnicity Trends - Hillsborough

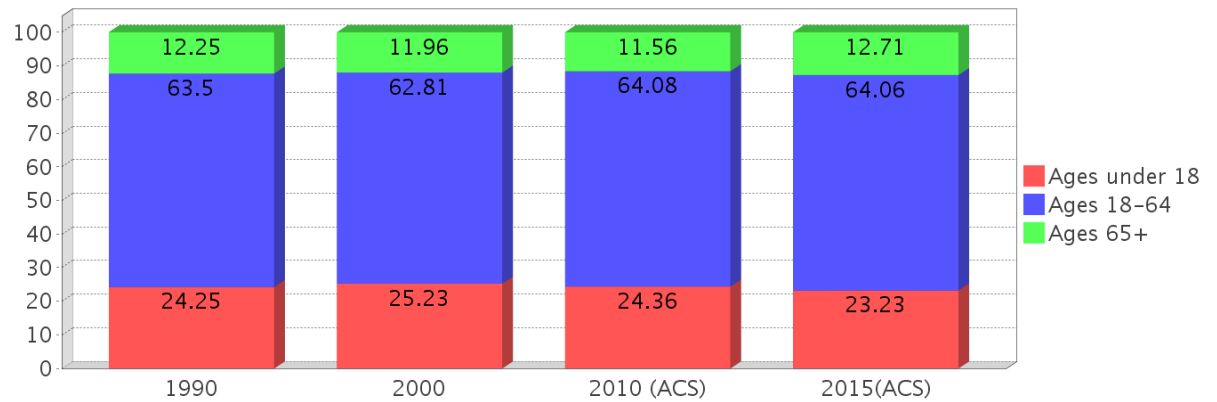
Description	1990	2000	2010 (ACS)	2015(ACS)
White Alone	690,352 (82.77%)	750,497 (75.13%)	890,392 (74.18%)	926,752 (71.13%)
Black or African American Alone	110,283 (13.22%)	147,966 (14.81%)	196,352 (16.36%)	216,735 (16.64%)
Native Hawaiian and Other Pacific Islander Alone	(NA)	540 (0.05%)	773 (0.06%)	1,061 (0.08%)
Asian Alone	11,093 (1.33%)	21,571 (2.16%)	40,285 (3.36%)	48,093 (3.69%)
American Indian or Alaska Native Alone	2,454 (0.29%)	4,175 (0.42%)	5,523 (0.46%)	4,665 (0.36%)
Some Other Race Alone	19,586 (2.35%)	46,587 (4.66%)	39,276 (3.27%)	64,340 (4.94%)
Claimed 2 or More Races	(NA)	27,612 (2.76%)	27,635 (2.30%)	41,238 (3.17%)
Hispanic or Latino of Any Race	106,908 (12.82%)	179,637 (17.98%)	286,394 (23.86%)	339,540 (26.06%)
Not Hispanic or Latino	727,146 (87.18%)	819,311 (82.02%)	913,842 (76.14%)	963,344 (73.94%)
Minority	568,661 (68.18%)	366,644 (36.70%)	568,661 (47.38%)	627,917 (48.19%)



### Age Trends - Hillsborough

Description	1990	2000	2010 (ACS)	2015(ACS)
Under Age 5	7.30%	6.77%	6.70%	6.39%
Ages 5-17	16.95%	18.46%	17.66%	16.84%
Ages 18-21	5.96%	5.33%	5.91%	5.71%
Ages 22-29	14.20%	11.31%	11.83%	11.72%
Ages 30-39	17.39%	16.38%	13.93%	13.78%
Ages 40-49	12.95%	15.22%	15.18%	14.09%
Ages 50-64	13.00%	14.57%	17.23%	18.77%
Age 65 and Over	12.25%	11.96%	11.56%	12.71%
-Ages 65-74	7.41%	6.46%	6.21%	7.19%
-Ages 75-84	3.83%	4.20%	3.87%	3.87%
-Age 85 and Over	1.00%	1.29%	1.48%	1.65%
Median Age	NA	35	36	37

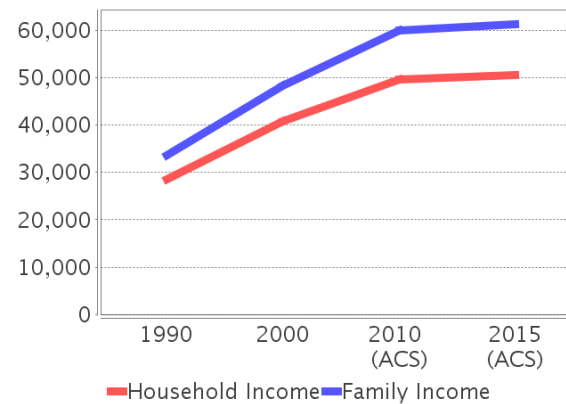
Percentage Population by Age Group



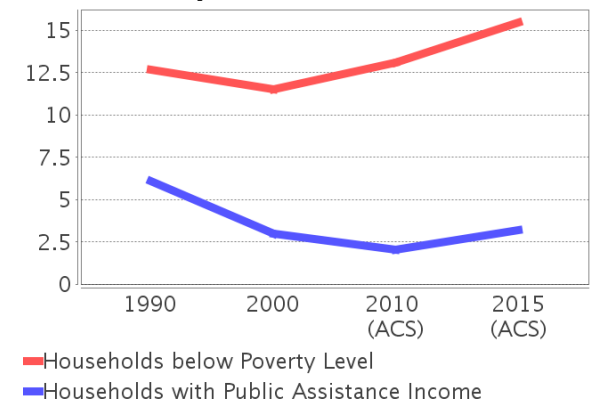
### Income Trends - Hillsborough

Description	1990	2000	2010 (ACS)	2015(ACS)
Median Household Income	\$28,477	\$40,663	\$49,536	\$50,579
Median Family Income	\$33,645	\$48,223	\$59,886	\$61,262
Population below Poverty Level	13.29%	12.51%	14.17%	16.97%
Households below Poverty Level	12.66%	11.50%	13.11%	15.45%
Households with Public Assistance Income	6.07%	3.01%	2.06%	3.18%

Income Trends



Poverty and Public Assistance



### Disability Trends - Hillsborough

See the Data Sources section below for an explanation about the differences in disability data among the various years.

Description	1990	2000	2010 (ACS)	2015(ACS)
Population 16 To 64 Years with a disability	48,345 (7.57%)	136,465 (14.85%)	NA (NA)	NA (NA)
Population 20 To 64 Years with a disability	NA (NA)	NA (NA)	NA (NA)	79,106 (9.96%)

## Educational Attainment Trends - Hillsborough

Age 25 and Over

Description	1990	2000	2010 (ACS)	2015(ACS)
Less than 9th Grade	48,247	41,209	41,965	43,073
9th to 12th Grade, No Diploma	84,751	84,574	69,127	66,133
High School Graduate or Higher	412,022	528,058	672,988	762,685
Bachelor's Degree or Higher	110,070	164,109	226,113	266,437

## Language Trends - Hillsborough

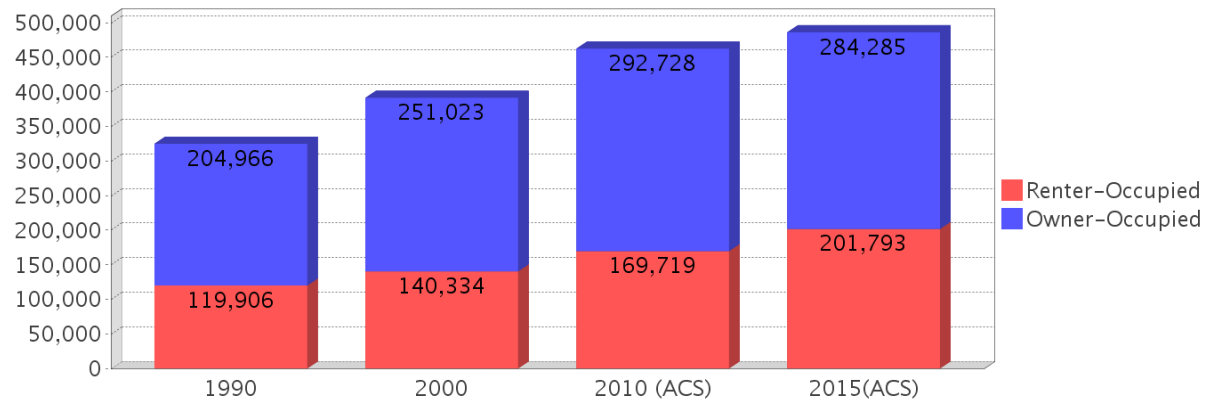
Age 5 and Over

Description	1990	2000	2010 (ACS)	2015(ACS)
Speaks English Well	23,611	39,227	54,355	50,719
Speaks English Not Well	NA	28,250	39,803	44,487
Speaks English Not at All	NA	13,819	19,950	24,627
Speaks English Not Well or Not at All	20,956	42,069	59,753	69,114

## Housing Trends - Hillsborough

Description	1990	2000	2010 (ACS)	2015(ACS)
Total	367,740	425,962	526,016	549,024
Units per Acre	0.536	0.622	0.768	0.80
Single-Family Units	200,373	260,157	330,155	345,207
Multi-Family Units	87,418	122,837	153,087	161,555
Mobile Home Units	34,499	42,063	42,158	41,562
Owner-Occupied Units	204,966	251,023	292,728	284,285
Renter-Occupied Units	119,906	140,334	169,719	201,793
Vacant Units	42,868	34,605	63,569	62,946
Median Housing Value	\$72,400	\$91,800	\$198,900	\$159,200
Occupied Housing Units w/No Vehicle	28,289 (8.71%)	31,680 (8.09%)	30,440 (6.58%)	34,742 (7.15%)

### Housing Tenure



---

## County Data Sources

Demographic data reported is from the U.S. Decennial Census (1990, 2000) and the American Community Survey (ACS) 5-year estimates from 2006-2010 and 2011-2015. The data was gathered at the county level. Depending on the dataset, the data represents 100% counts (Census Summary File 1) or sample-based information (Census Summary File 3 or ACS).

### About the Census Data:

Use caution when comparing the 100% count data (Decennial Census) to the sample-based data (ACS). In any given year, about one in 40 or 2.5% of U.S. households will receive the ACS questionnaire. Over any five-year period, about one in eight households will receive the questionnaire, as compared to about one in six that received the long form questionnaire for the Decennial Census 2000. (Source: <http://mcdc.missouri.edu/pub/data/acs/Readme.shtml>) The U.S. Census Bureau provides help with this process:

[http://www.census.gov/acs/www/guidance\\_for\\_data\\_users/comparing\\_2015/](http://www.census.gov/acs/www/guidance_for_data_users/comparing_2015/)

Use caution when interpreting changes in Race and Ethnicity over time. Starting with the 2000 Decennial Census, respondents were given a new option of selecting one or more race categories. Also in 2000, the placement of the question about Hispanic origin changed, helping to increase responsiveness to the Hispanic-origin question. Because of these and other changes, the 1990 data on race and ethnicity are not directly comparable with data from later censuses. (Source: <http://www.census.gov/prod/2001pubs/c2kbr01-1.pdf>;  
<http://www.census.gov/pred/www/rpts/Race%20and%20Ethnicity%20FINAL%20report.pdf>)

The "Minority" calculations are derived from Census and ACS data using both the race and ethnicity responses. On this report, "Minority" refers to individuals who list a race other than White and/or list their ethnicity as Hispanic/Latino. In other words, people who are multi-racial, any single race other than White, or Hispanic/Latino of any race are considered minorities.

Disability data is not included in the 2010 Decennial Census, or the 2006-2010 ACS. This data is available in the 2011-2015 ACS.

Because of changes made to the Census and ACS questions between 1990 and 2015, disability variables should not be compared from year to year. For example: 1) With the 1990 data the disabilities are listed as a "work disability" while this distinction is not made with 2000 or 2015 ACS data; 2) The 2015 ACS data includes the institutionalized population (e.g. persons in prisons and group homes), while this population is not included in 1990 or 2000; 3) the age groupings changed over the years.

Please take the following two concerns into account when viewing this data: 1) With the 1990 data the disabilities are listed as a "work disability" while this distinction is not made with 2000 or 2015 ACS data; 2) The 2015 ACS data includes the institutionalized population (e.g. persons in prisons and group homes), while this population is not included in 1990 or 2000.

source:

<https://www.census.gov/people/disability/methodology/acs.html>

<https://www.census.gov/population/www/cen2000/90vs00/index.html>

The category Bachelor's Degree or Higher under the heading Educational Attainment Trends is a subset of the category High School Graduate or Higher.

---

## Metadata

- Community and Fraternal Centers [https://etdmpub.florida-etat.org/metadata/gc\\_communitycenter.htm](https://etdmpub.florida-etat.org/metadata/gc_communitycenter.htm)
- Correctional Facilities in Florida [https://etdmpub.florida-etat.org/metadata/gc\\_correctional.htm](https://etdmpub.florida-etat.org/metadata/gc_correctional.htm)
- Cultural Centers in Florida [https://etdmpub.florida-etat.org/metadata/gc\\_culturecenter.htm](https://etdmpub.florida-etat.org/metadata/gc_culturecenter.htm)
- Fire Department and Rescue Station Facilities in Florida [https://etdmpub.florida-etat.org/metadata/gc\\_firestat.htm](https://etdmpub.florida-etat.org/metadata/gc_firestat.htm)
- Local, State, and Federal Government Buildings in Florida [https://etdmpub.florida-etat.org/metadata/gc\\_govbuild.htm](https://etdmpub.florida-etat.org/metadata/gc_govbuild.htm)
- Florida Health Care Facilities [https://etdmpub.florida-etat.org/metadata/gc\\_health.htm](https://etdmpub.florida-etat.org/metadata/gc_health.htm)
- Hospital Facilities in Florida [https://etdmpub.florida-etat.org/metadata/gc\\_hospitals.htm](https://etdmpub.florida-etat.org/metadata/gc_hospitals.htm)
- Law Enforcement Facilities in Florida [https://etdmpub.florida-etat.org/metadata/gc\\_lawenforce.htm](https://etdmpub.florida-etat.org/metadata/gc_lawenforce.htm)
- Florida Parks and Recreational Facilities [https://etdmpub.florida-etat.org/metadata/gc\\_parks.htm](https://etdmpub.florida-etat.org/metadata/gc_parks.htm)
- Religious Centers [https://etdmpub.florida-etat.org/metadata/gc\\_religion.htm](https://etdmpub.florida-etat.org/metadata/gc_religion.htm)
- Florida Public and Private Schools [https://etdmpub.florida-etat.org/metadata/gc\\_schools.htm](https://etdmpub.florida-etat.org/metadata/gc_schools.htm)
- Social Service Centers [https://etdmpub.florida-etat.org/metadata/gc\\_socialservice.htm](https://etdmpub.florida-etat.org/metadata/gc_socialservice.htm)
- Assisted Rental Housing Units in Florida [https://etdmpub.florida-etat.org/metadata/gc\\_assisted\\_housing.htm](https://etdmpub.florida-etat.org/metadata/gc_assisted_housing.htm)
- Group Care Facilities <https://etdmpub.florida-etat.org/metadata/groupcare.htm>
- Mobile Home Parks in Florida [https://etdmpub.florida-etat.org/metadata/gc\\_mobilehomes.htm](https://etdmpub.florida-etat.org/metadata/gc_mobilehomes.htm)
- Migrant Camps in Florida <https://etdmpub.florida-etat.org/metadata/migrant.htm>
- Veteran Organizations and Facilities [https://etdmpub.florida-etat.org/metadata/gc\\_veterans.htm](https://etdmpub.florida-etat.org/metadata/gc_veterans.htm)
- Generalized Land Use - Florida DOT District 7 [https://etdmpub.florida-etat.org/metadata/d7\\_lu\\_gen.htm](https://etdmpub.florida-etat.org/metadata/d7_lu_gen.htm)
- Census Block Groups in Florida [https://etdmpub.florida-etat.org/metadata/e2\\_cenacs\\_cci.htm](https://etdmpub.florida-etat.org/metadata/e2_cenacs_cci.htm)
- 1990 Census Block Groups in Florida [https://etdmpub.florida-etat.org/metadata/e2\\_cenblkgrp\\_1990\\_cci.htm](https://etdmpub.florida-etat.org/metadata/e2_cenblkgrp_1990_cci.htm)
- 2000 Census Block Groups in Florida [https://etdmpub.florida-etat.org/metadata/e2\\_cenblkgrp\\_2000\\_cci.htm](https://etdmpub.florida-etat.org/metadata/e2_cenblkgrp_2000_cci.htm)
- 2010 Census Block Groups in Florida [https://etdmpub.florida-etat.org/metadata/e2\\_cenblkgrp\\_2010\\_cci.htm](https://etdmpub.florida-etat.org/metadata/e2_cenblkgrp_2010_cci.htm)