

PLANT CITY  
 NORTH ALEXANDER STREET STUDY AREA  
 AERIAL PHOTOGRAPHY



LEGEND

STUDY AREA BOUNDARY

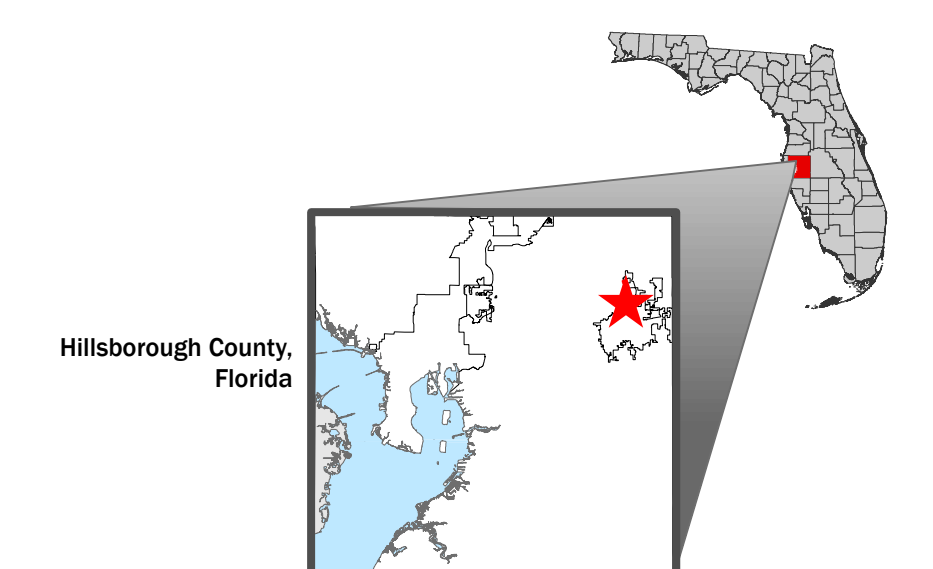
INTERSECTION BUFFERS

- 500 FT BUFFER
- 1/4 MILE BUFFER
- 1/3 MILE BUFFER

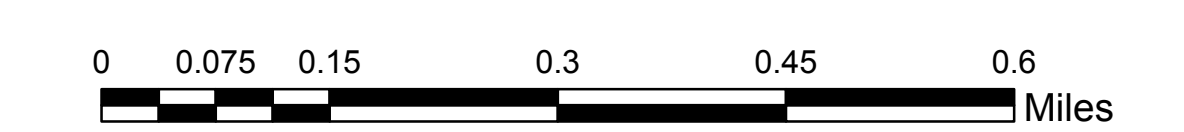
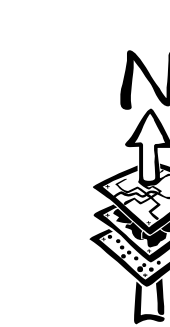
- ROADS AND BOUNDARY LINES
- COUNTY BOUNDARY
- JURISDICTION BOUNDARY

**DRAFT**

LOCATOR MAP AND REFERENCE INFORMATION



DATA SOURCES: Aerial Photography 2016, Hillsborough County Geomatics.  
 JURISDICTIONAL AREA: Updated by plan amendment. Effective to present.  
 URBAN SERVICE AREA BOUNDARIES: Hillsborough County City-County Planning Commission. Effective to Present.  
 MAJOR ROADS: Metropolitan Planning Organization Long Range Transportation Plan. See Adopted MPO Long Range Transportation Plan for specific improvements.  
 ACCURACY: It is intended that the accuracy of the base map comply with U.S. map accuracy standards. However, such accuracy is not guaranteed by the Hillsborough County City-County Planning Commission.  
 REPRODUCTION: This sheet may not be reproduced in part or full for sale to anyone without specific approval of the Hillsborough County City-County Planning Commission.



Author: CATANIAC  
 Date: 3/20/2017

Path: G:\gisroot\Projects\Cathy\Arcmap\NEW\_MXD\PlantCity\NorthAlexanderStreetStudy\_AERIAL.mxd  
 PlanHillsborough.org

