



Tampa Bay Next is a process of working with the community to come up with an action plan for transportation.



Why Tampa Bay Next?

Tampa Bay Next is addressing 4 distinct problems.



DESIGN



DEMAND



CHOICE

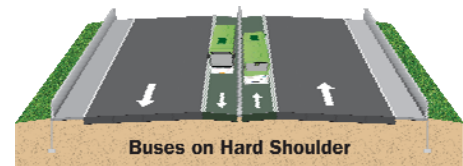


CONSENSUS

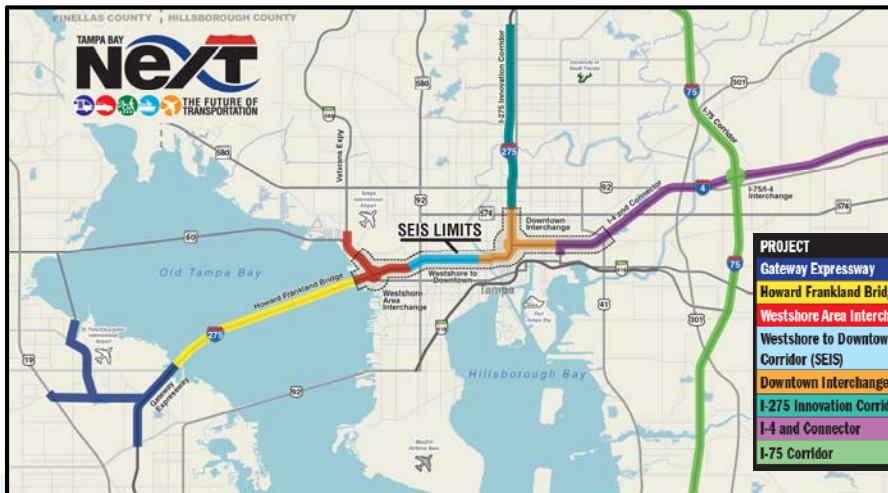


You've asked us to keep you updated on...

- Mitigation efforts for the neighborhoods
- Community engagement
- Status of the PD&E (environmental impact studies)
- Options for premium transit
- Efforts to report on the human impact of the projects
- Continuing the reevaluation process on the different segments



Project Development Status



PROJECT	PUBLIC HEARING	PREFERRED ALTERNATIVE
Gateway Expressway	September 2015	Express Lanes
Howard Frankland Bridge	November 2017	Express Lanes (4 non-tolled)
Westshore Area Interchange (SEIS)	Early 2019	Evaluating alternatives
Westshore to Downtown Corridor (SEIS)	Early 2019	Evaluating alternatives
Downtown Interchange (SEIS)	Early 2019	Evaluating alternatives
I-275 Innovation Corridor	Early 2019	Evaluating alternatives
I-4 and Connector	October 2015	Express Lanes
I-75 Corridor	TBD	TBD

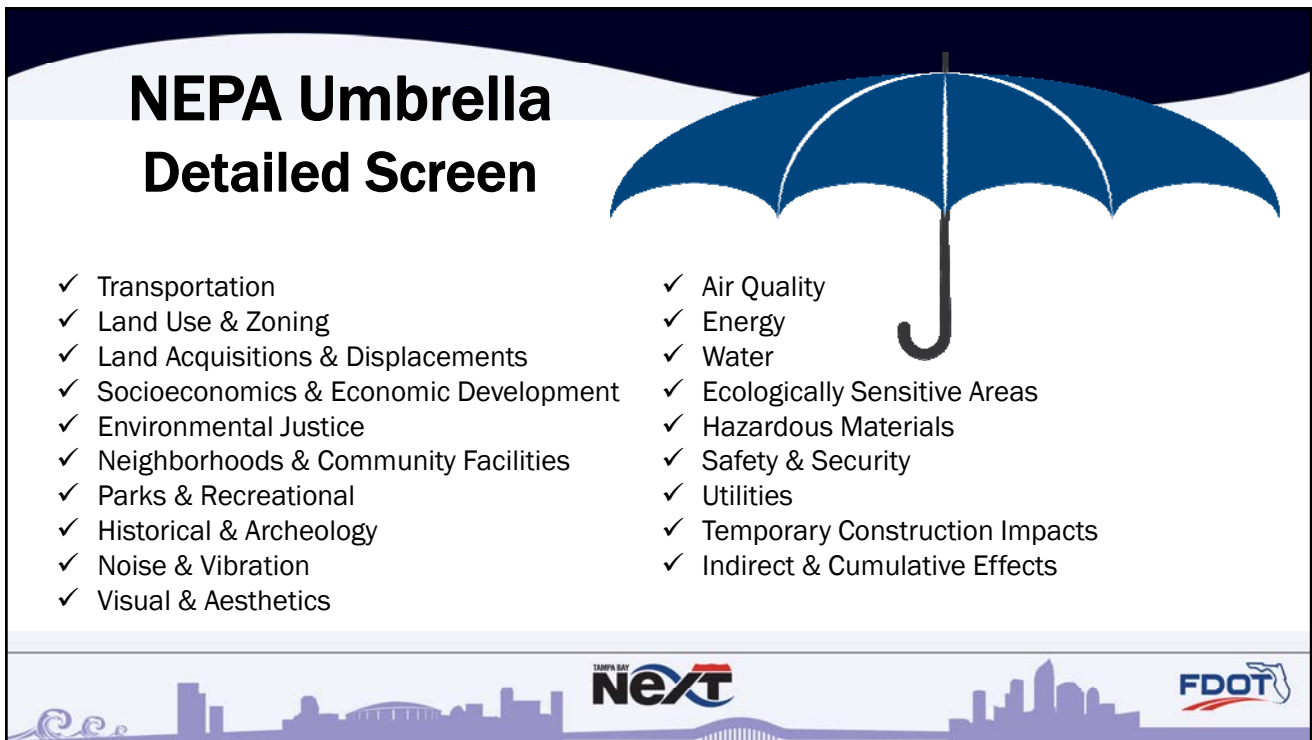


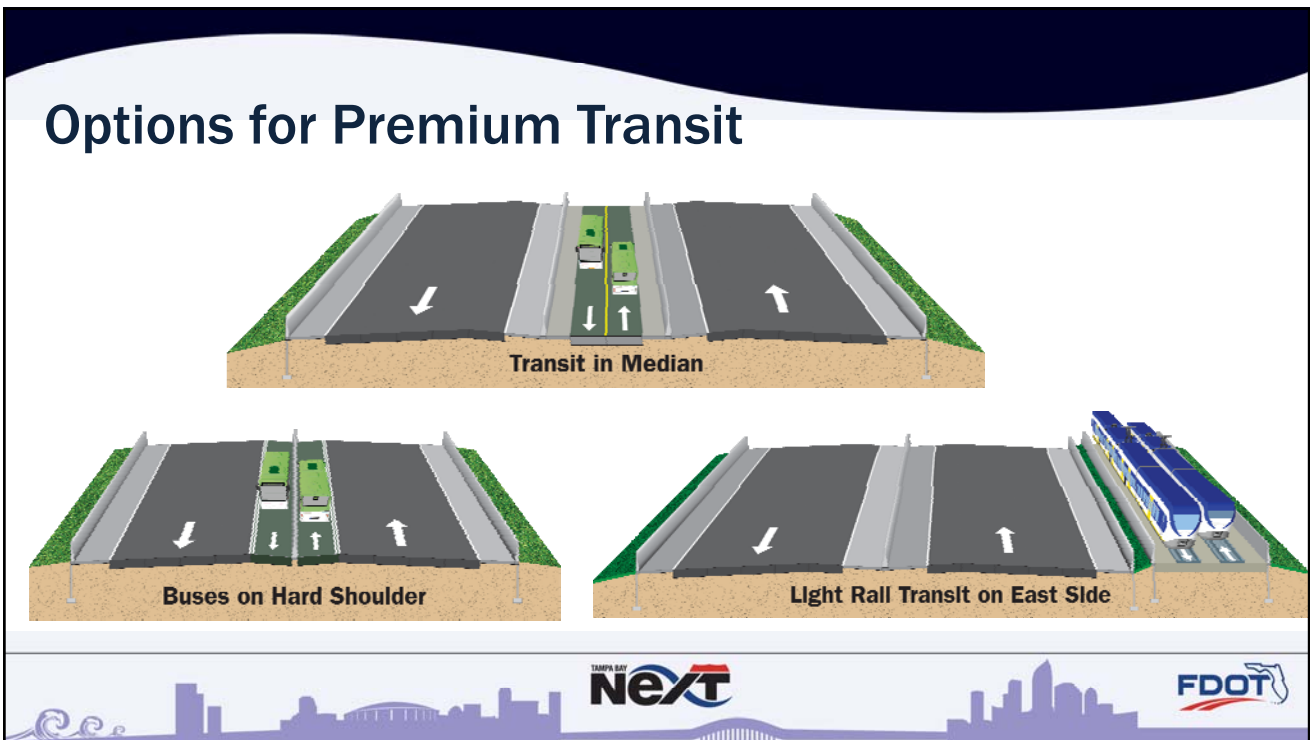
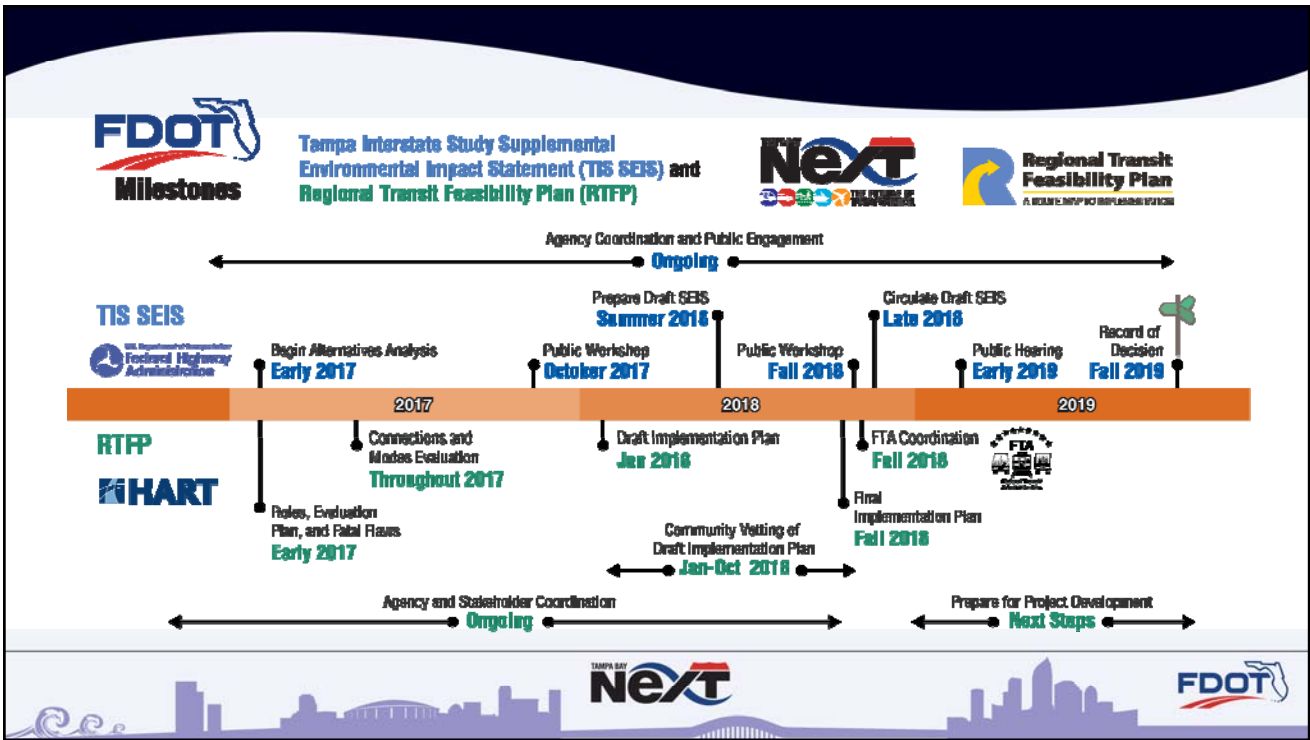


National Environmental Policy Act (NEPA) Basics

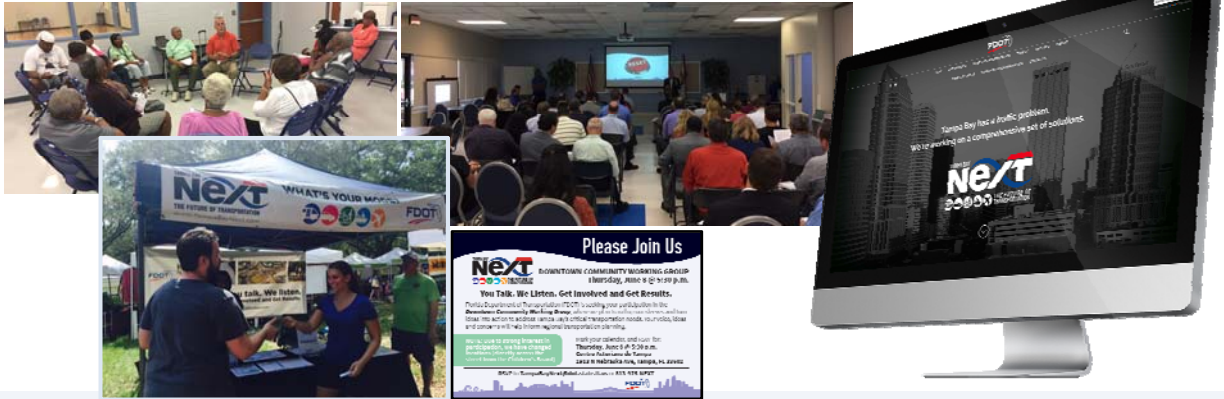
An integrated, decision-making process







How Can People Participate In The Process?



Please Join Us
BROWNSVILLE COMMUNITY BUSINESS MEETING
Thursday, June 8 @ 9:00 p.m.
You Talk. We Listen. Get Involved and Get Results.
Florida Department of Transportation (FDOT) is seeking your participation in the Brownsville Community Business Meeting. This meeting is an opportunity for you to share your thoughts and concerns with FDOT from regional transportation planning.
We will use your feedback to help us make decisions on how to improve transportation in the Brownsville area.
High your agenda and join for Thursday, June 8 @ 9:00 p.m. at the Brownsville Community Business Meeting. For more information, please contact the community meeting coordinator at 813.939.5457.



What have we heard so far?

Downtown Top Focus Area:

Prioritizing transportation solutions like rail, bus, biking and walking to align with the many values of the community.

Westshore Top Focus Area:

Use data/impact driven decision making, cost/benefit analysis vs. "whoever screams the loudest."



What have we heard so far?

Pinellas Top Focus Area:

Account for new technologies, including automated vehicles, mass transit, maximize access to airports and multimodal centers.

N & W Hillsborough Top Focus Area:

Allocating funds to sidewalks and roads to neighborhoods that actually need it, keeping people as the focus of the transportation system



What actions are we collectively taking as a result of the feedback?



FLORIDA AVENUE AND TAMPA STREET/HIGHLAND AVENUE CORRIDOR STUDY

SUMMARY REPORT
APPROVED - AUGUST 2016



Hillsborough MPO
Metropolitan Planning
for Transportation

Funding Project
Development in FDOT's
Work Program



Formed Technology
Task Team to
maximize existing
infrastructure



Working to "connect
the dots" to tap into
shared resources
and leverage funding
more efficiently





Hillsborough MPO
Metropolitan Planning
for Transportation



**Moving Forward
Together**



QUESTIONS



TampaBayNext.com
(813) 975-NEXT
TampaBayNext@dot.state.fl.us

 TampaBayNext  @TampaBayNext

