



TAMPA BAY  
**Next**

A row of five circular icons representing different modes of transportation: a blue bus, a red car, a green bicycle, a blue boat, and an orange airplane.

THE FUTURE OF  
TRANSPORTATION



# You Talked. We Listened.

## What you said you want to see:

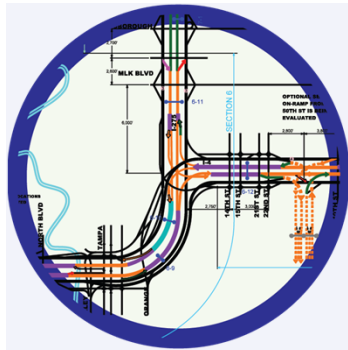
- ▶ Hub System for Transit
- ▶ Multimodal Options
- ▶ Technology Solutions
- ▶ Neighborhood Preservation
- ▶ Prioritize Safety
- ▶ Education/Explain Transportation
- ▶ More Online & Recorded Meetings

## What we're doing about it:

- ▶ Intermodal Center Studies
- ▶ Funding Next Phase of Project Development for RTFP
- ▶ Formed Tech Team; Working with City and County to Maximize Existing Pavement
- ▶ Advanced the Heights Study; Created New Downtown Interchange Concepts
- ▶ Complete Streets; Working on Improved Road Geometry; Tech Solutions to Enhance Safety
- ▶ Developed Citizens Transportation Academy
- ▶ Utilizing Webinars and Posting Recordings Online

# Why Tampa Bay Next?

Tampa Bay Next is addressing 4 distinct problems.



**DESIGN**



**DEMAND**



**CHOICE**



**CONSENSUS**

## Howard Frankland Bridge

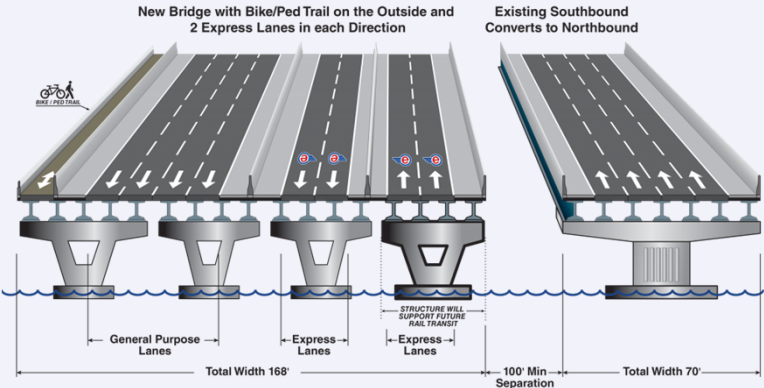
**In 2020, FDOT plans to rebuild the existing northbound bridge, which was originally constructed in 1960. The new bridge will:**

- ▶ Improve incident management
- ▶ Improve Express Bus Service
- ▶ Better accommodate the possibility of future transit
- ▶ Better prepare for Autonomous Vehicles
- ▶ Anticipate Future Demand
- ▶ Cost Effective
- ▶ Bike/Ped Facility

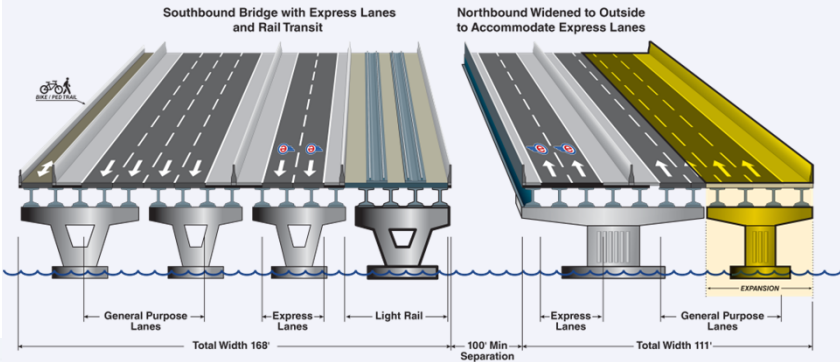


# Howard Frankland Bridge Updated Design

**Howard Frankland Bridge**  
This is what we are proposing to build in 2020.



**Howard Frankland Bridge**  
This is how we would accommodate rail transit in the future.



## HOWARD FRANKLAND BRIDGE PUBLIC HEARING

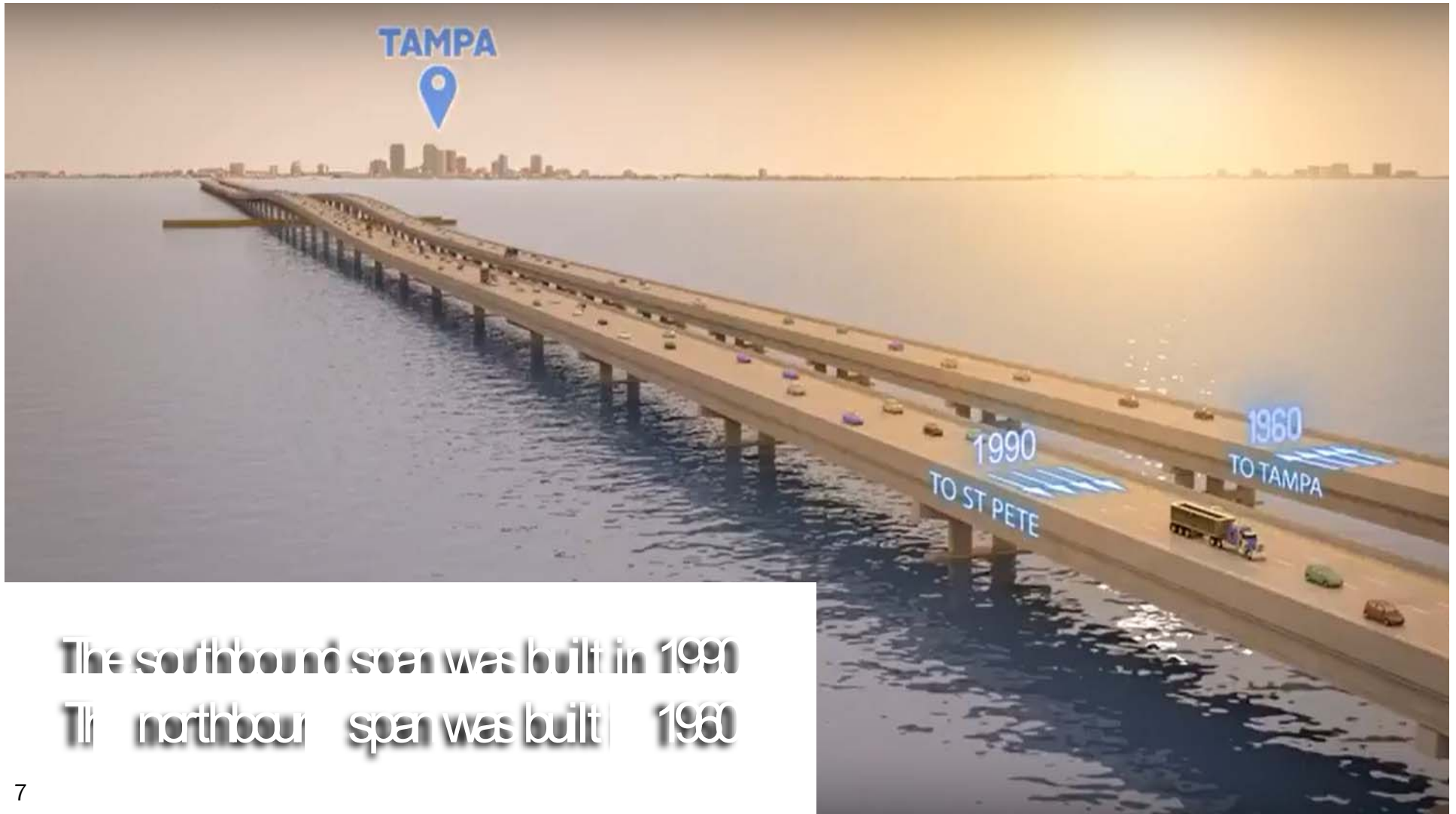
The dates and locations are as follows:

**Tuesday, November 14**  
5:30 p.m. - 7:30 p.m.  
Tampa Marriott Westshore  
1001 N. Westshore Blvd.  
Tampa, FL 33607

**Thursday, November 16**  
5:30 p.m. - 7:30 p.m.  
Hilton-St. Pete Carillon Park  
950 Lake Carillon Drive  
St. Petersburg, FL 33716



View of existing bridge spans, facing Tampa

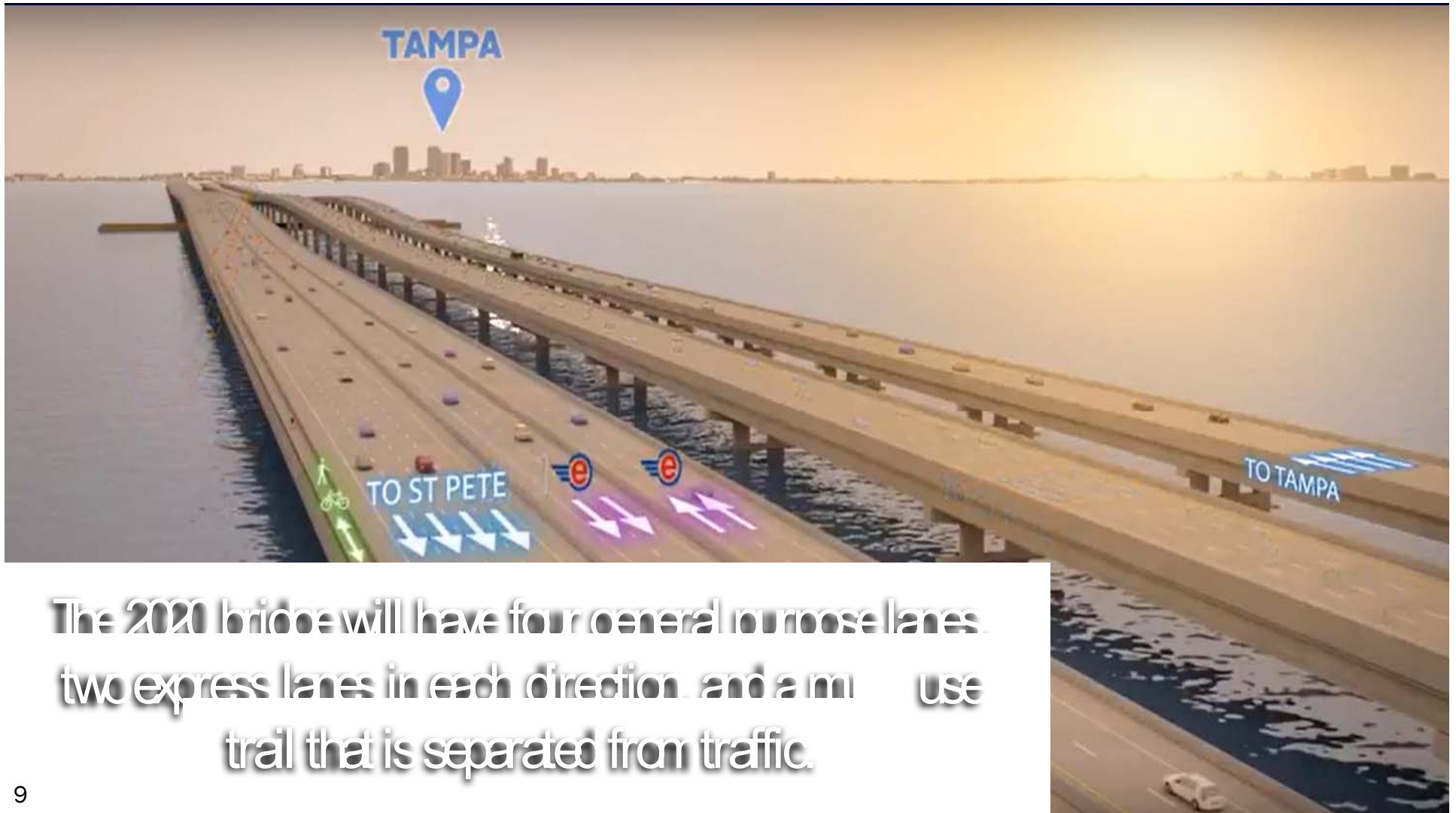


The southbound span was built in 1990  
The northbound span was built in 1960

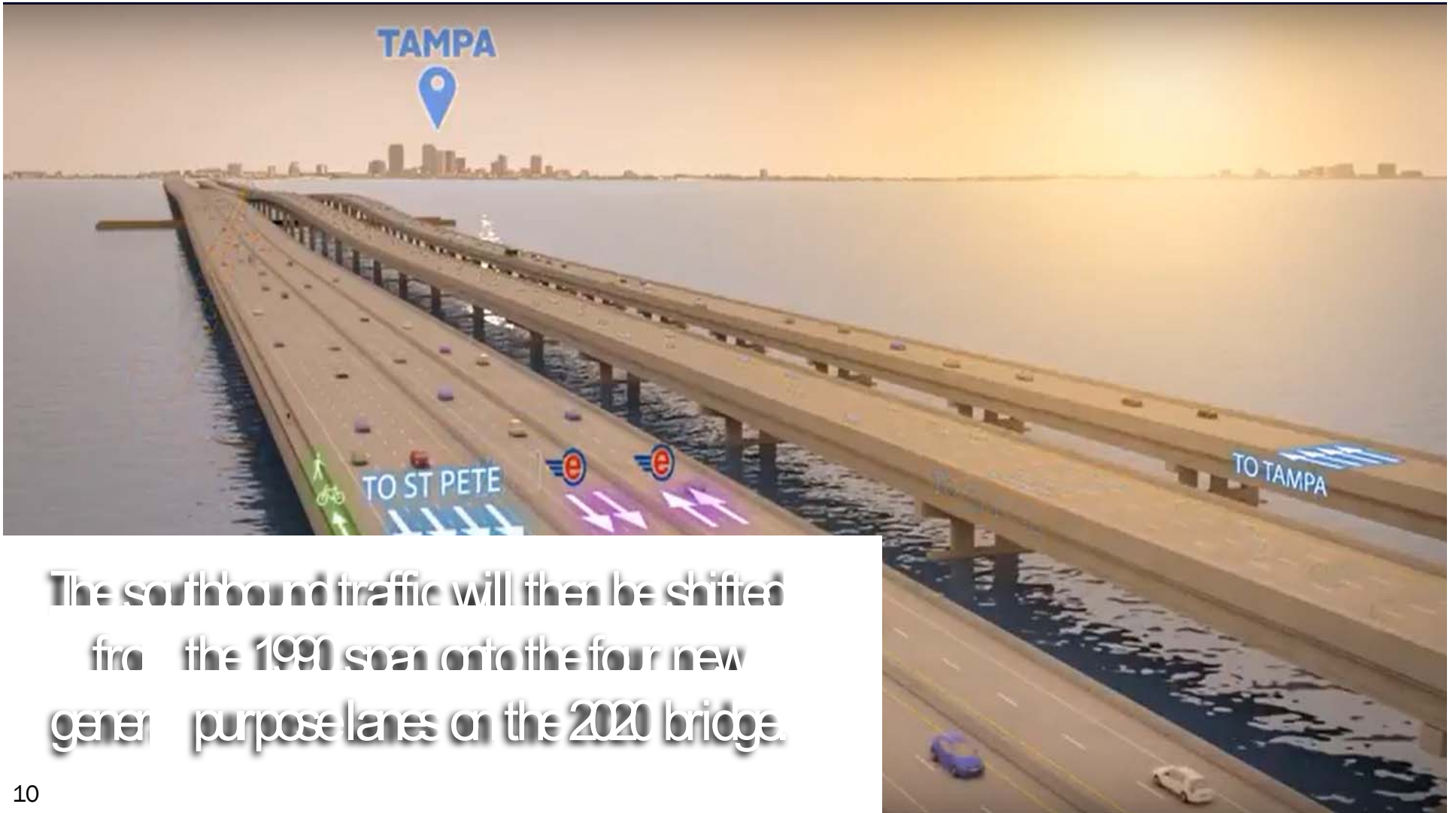


In 2020 a new larger bridge will be built adjacent to the existing southbound bridge





The 2020 bridge will have four general purpose lanes, two express lanes in each direction, and a multi-use trail that is separated from traffic.



The southbound traffic will then be shifted from the 1990 span onto the four new general purpose lanes on the 2020 bridge.



Then the northbound traffic will be shifted from the 1960 span onto 1990 span.



After the new bridge is built the 1980 bridge will be dismantled.

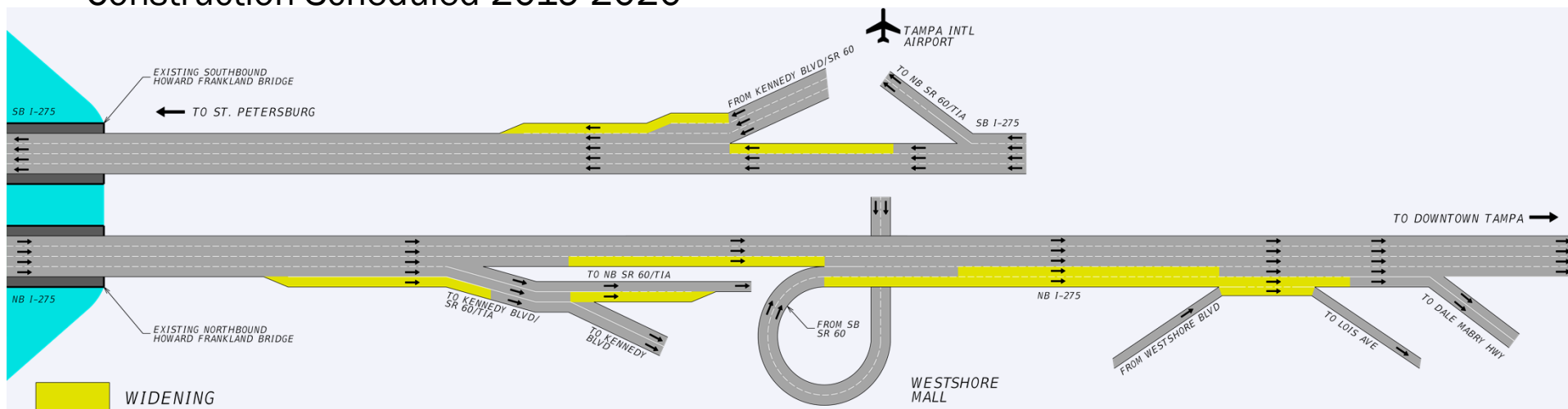


## Westshore Area Lane Additions and Transitions

# I-275 Operational Improvements

This is our upcoming project to reduce congestion on I-275 at SR 60. Construction Scheduled 2019-2020

NOT TO SCALE



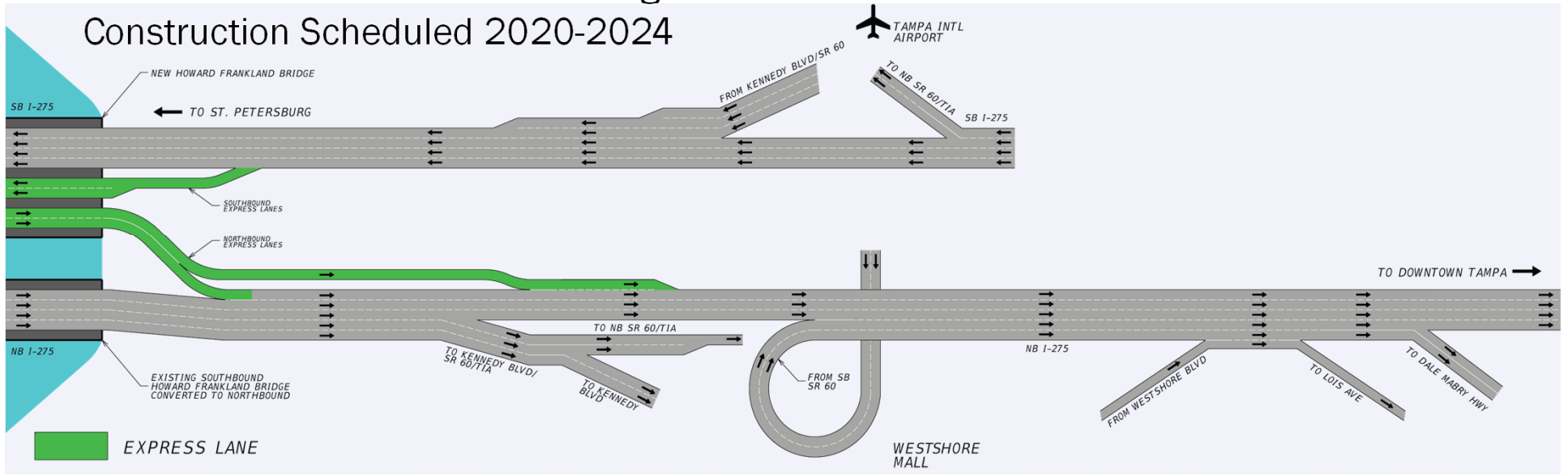
# Westshore Area Lane Additions and Transitions

## Howard Frankland Bridge Project

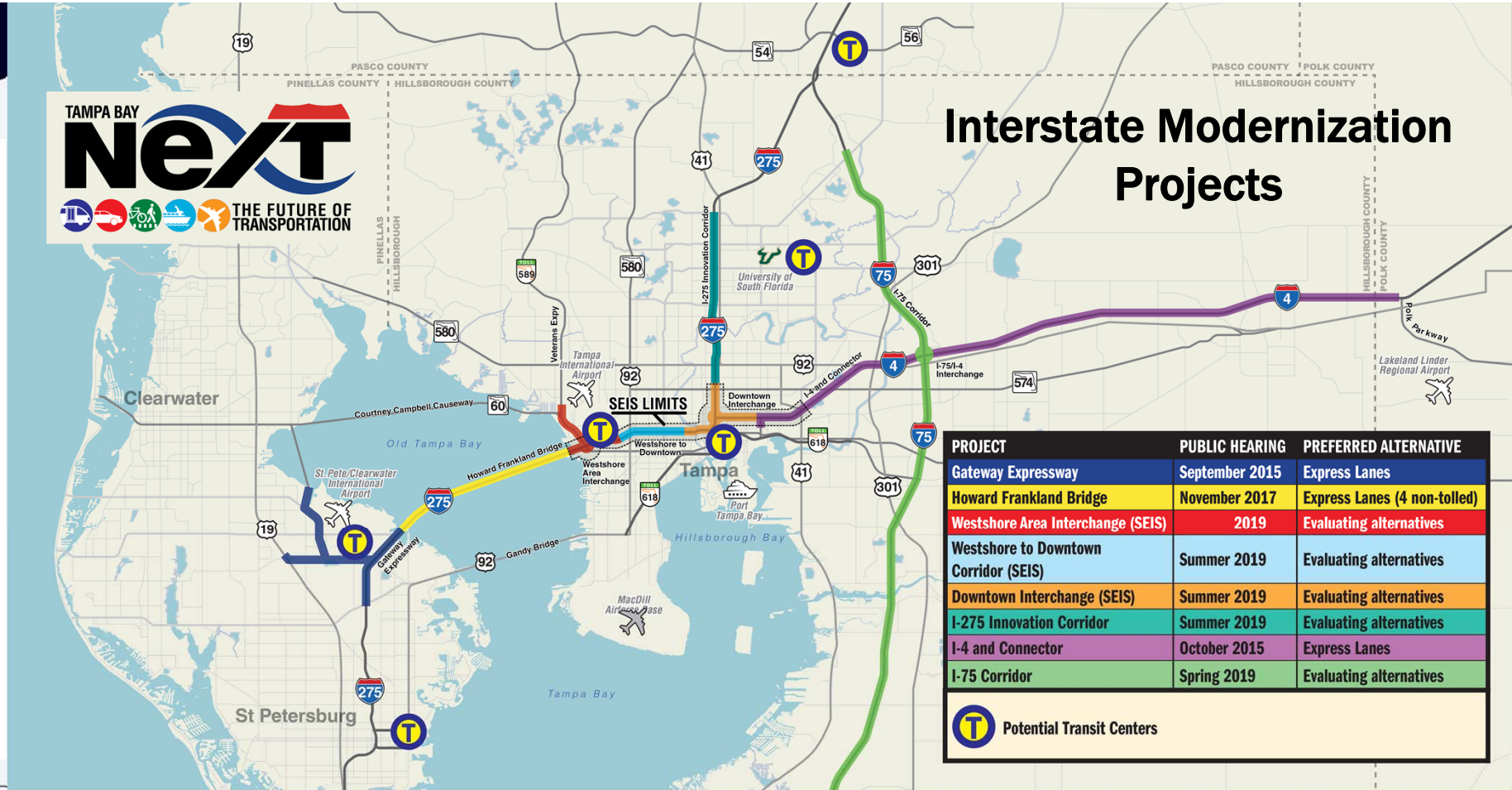
This is how express lanes will transition into the Westshore area after the new bridge is built.

NOT TO SCALE

Construction Scheduled 2020-2024



# Interstate Modernization Projects



PROJECT	PUBLIC HEARING	PREFERRED ALTERNATIVE
Gateway Expressway	September 2015	Express Lanes
Howard Frankland Bridge	November 2017	Express Lanes (4 non-tolled)
Westshore Area Interchange (SEIS)	2019	Evaluating alternatives
Westshore to Downtown Corridor (SEIS)	Summer 2019	Evaluating alternatives
Downtown Interchange (SEIS)	Summer 2019	Evaluating alternatives
I-275 Innovation Corridor	Summer 2019	Evaluating alternatives
I-4 and Connector	October 2015	Express Lanes
I-75 Corridor	Spring 2019	Evaluating alternatives

**T** Potential Transit Centers



# TIS SEIS

## Public Outreach Milestones

**October 9 and 10, 2017:**  
Public Workshop #1 and  
Historic Resources Meeting

**Late 2018:**  
Public Workshop #2

**Mid-2019:**  
Public Hearing

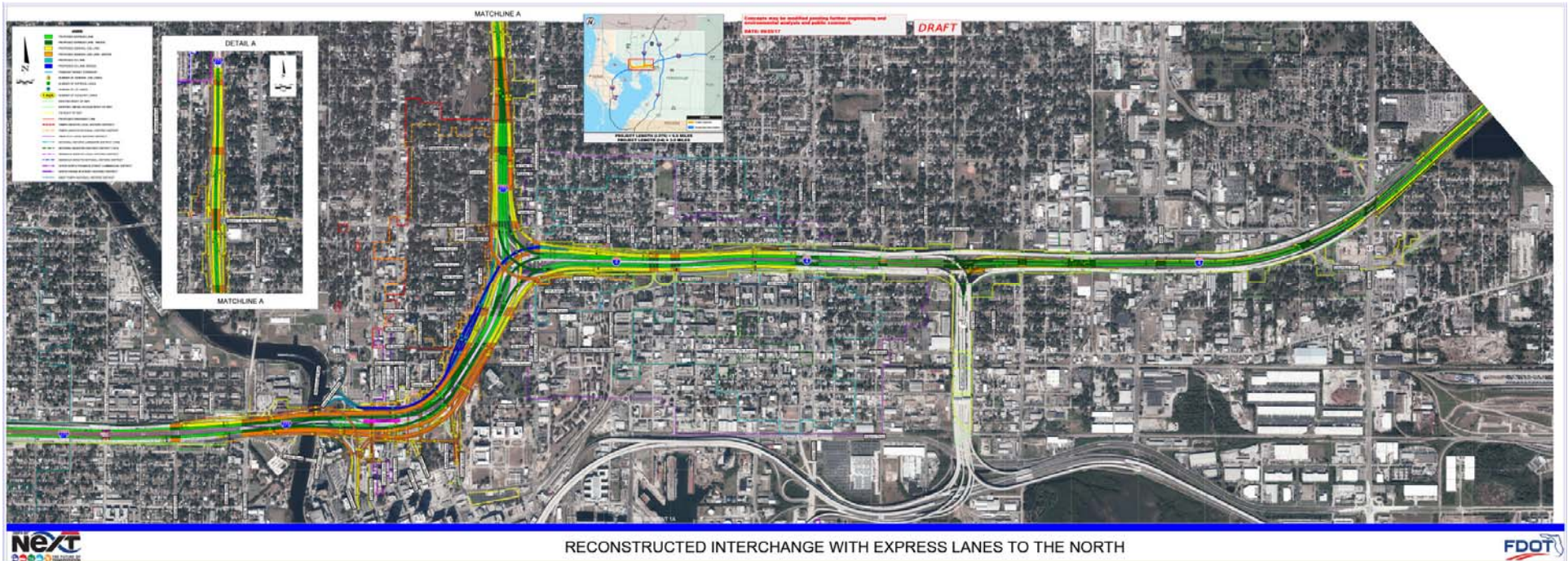




# Downtown Interchange Concepts



# Reconstructed Interchange with Express Lanes to the North



RECONSTRUCTED INTERCHANGE WITH EXPRESS LANES TO THE NORTH

# Reconstructed Interchange without Express Lanes to the North



# Existing Interchange with Elevated Express Lanes - South Option



EXISTING INTERCHANGE WITH ELEVATED EXPRESS LANES - SOUTH OPTION

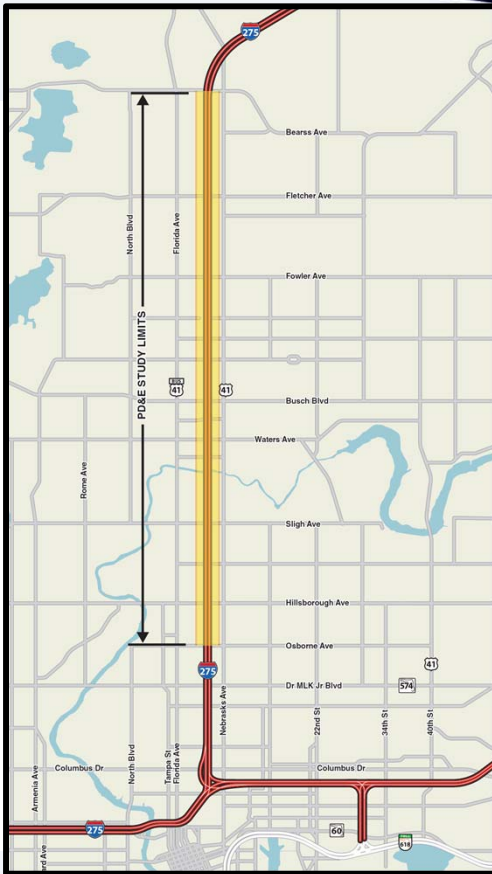


# Existing Interchange with Elevated Express Lanes - North Option



EXISTING INTERCHANGE WITH ELEVATED EXPRESS LANES - NORTH OPTION





## I-275 North PD&E Study

I-275 North from north of MLK Blvd to north of Bearss Ave.

- Separate study, but connected to options for the Downtown Interchange
- Outreach activities in conjunction with Heights Study and RTFP
- Downtown CWG – Dec. 13
- Working with Hillsborough MPO, City of Tampa, and Hillsborough County

# Community Outreach



## WEBINAR COURSES

<b>September 22</b>	Regional Transportation Roles and Responsibilities
<i>Note: There will be no session on Sept. 29 due to the TMA Leadership Meeting</i>	
<b>October 6</b>	Metropolitan Planning Process
<b>October 13</b>	Introduction to Transportation Project Development
<b>October 20</b>	Introduction to Transit: Transit Modes and How They Work
<b>October 27</b>	How Transportation Projects are Funded
<b>November 2</b>	Congestion Management Strategies





# Workforce Development

## Next Opportunity Committee

### K-12 Outreach

Partnerships with schools and STEM advocacy groups

Construction Career Days

Mentoring

Transportation academies/labs

### Workforce Recruitment & Readiness

Partnerships with community-based organizations

Career prep & readiness

Candidate recruitment

Construction Career Fairs

Special programs for at-risk and background challenged

### Apprenticeship & Training Programs

Partnerships with FDOT contractors, industry groups, and technical colleges

On-the-job training (OJT) apprenticeship programs

Skills development pipeline through journeyman status

Transportation assistance

### DBE/SBE/WMBE Business Development

Partnerships with existing FDOT and local small business programs

Prime/Sub Mentoring Programs

Annual "Doing Business with FDOT" Workshop in D7

Certification sessions in D7

# FDOT Invests in Transit

- ▶ Central Avenue BRT
- ▶ Cross-bay Water Ferry
- ▶ Intermodal Center Studies
- ▶ Express Bus in Express Lanes Study
- ▶ TECO Streetcar Extension Study
- ▶ Innovative Circulator Pilots
- ▶ Regional Transit Feasibility Plan & Project Development
- ▶ Marion Autonomous Shuttle Pilot



## Mobility Innovation and Technology (MIT) Team

State of the Practice

Where are we today?

Visioning

Where do we want to be tomorrow?

Roadmap

How are we going to get there?





# Moving Forward Together

