



Hillsborough MPO
Metropolitan Planning
for Transportation

Draft

Tampa Interstate Study Supplemental Environmental Impact Statement

Comments
August/September 2019



planhillsborough.org

1



planhillsborough.org

2

Options

- Westshore Interchange
 - ✓ Build
 - ✓ No Further Action
- Downtown Interchange
 - ✓ Build Options A – D
 - ✓ No Further Action
 - ✓ Short-Term Safety & Operational “Quick Fix”



planhillsborough.org

3

1

Tolled Express Lanes

DRAFT



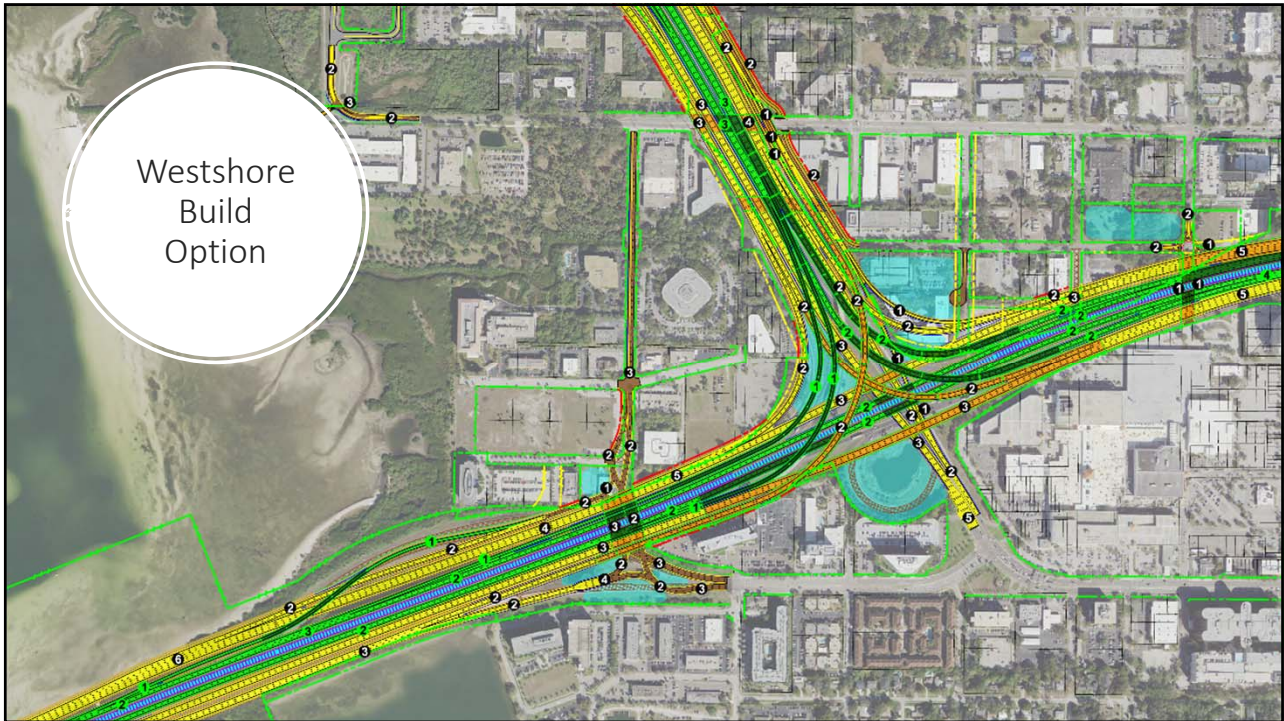
Westshore Interchange

- Reconstructs I-275/SR 60
- Adds 2 tolled express lanes in each direction
- Connects express lanes on Veterans and Howard Frankland Bridge
- Direct access to TIA
- New underpasses at Kennedy/Reo, Occident, and Trask Streets
- Express lane access at Reo and Himes
- Provides transit envelope on I-275
- 15 additional parcels needed
- Total Cost: \$1.6 Billion

4



5



6

OPTION A
Reconstructed Interchange with Express Lane Ramps to the North

OPTION B
Reconstructed Interchange without Express Lane Ramps to the North

Downtown Tampa Interchange – Build Options A and B

- Adds 2 tolled express lanes in each direction
- Opportunities for public realm improvements at Robles Park, Downtown Tampa, and Julian B. Lane Park
- Reconstructs I-275 and I-4
- Accommodates transit envelope in the median
- Largest footprint
- Construction Cost Estimate: \$1.1 – 1.3 Billion
- Fixes geometric issues (incl. I-275 ramp to I-4)
- Opportunities to reconstruct underpasses

7

OPTION C
Existing Interchange with Elevated Express Lanes South Option

OPTION D
Existing Interchange with Elevated Express Lanes North Option

Downtown Tampa Interchange – Build Options C and D

- Adds 2 tolled express lanes in each direction
- Does not fix existing other geometric issues
- Viaduct built alongside the existing interstate
- Opportunities to retrofit underpasses
- Smallest footprint (64 – 75 parcels)
- Fixed-guideway transit would be a challenge
- Fixes SB I-275 ramp to I-4
- Construction Cost Estimate: \$710 – 740 Million (does not include bridge deck replacement)

8

Short-Term Operational & Safety “Quick Fix”

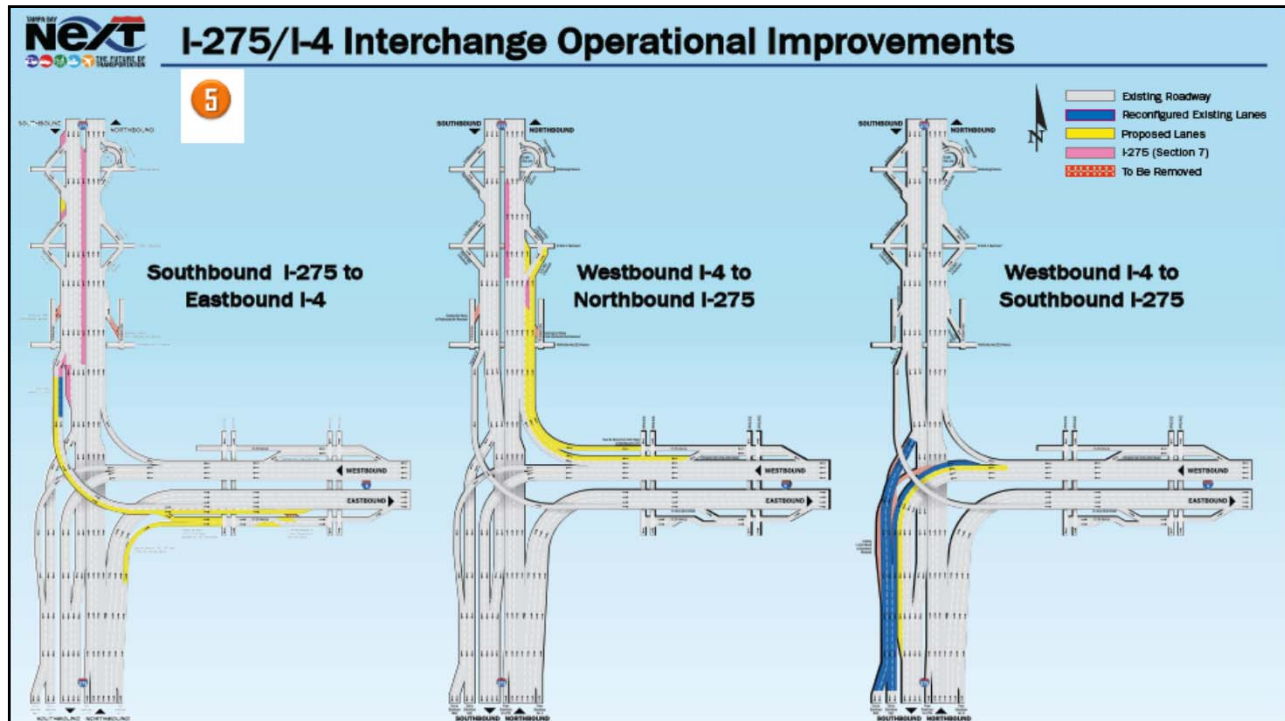
- FDOT is evaluating **operational improvements** for the I-275/I-4 interchange to address the existing bottlenecks that occur
 - The improvements will improve traffic flow and safety in the I-275/ I-4 interchange
 - ✓ 1,073 Crashes in 2016
 - ✓ 3,963 Crashes from 2012 to 2016
 - 3 operational improvements include:
 - ✓ Southbound I-275 to Eastbound I-4
 - ✓ Westbound I-4 to Northbound I-275
 - ✓ Westbound I-4 to Southbound I-275
- These short-term, safety improvements are separate from the SEIS.

9

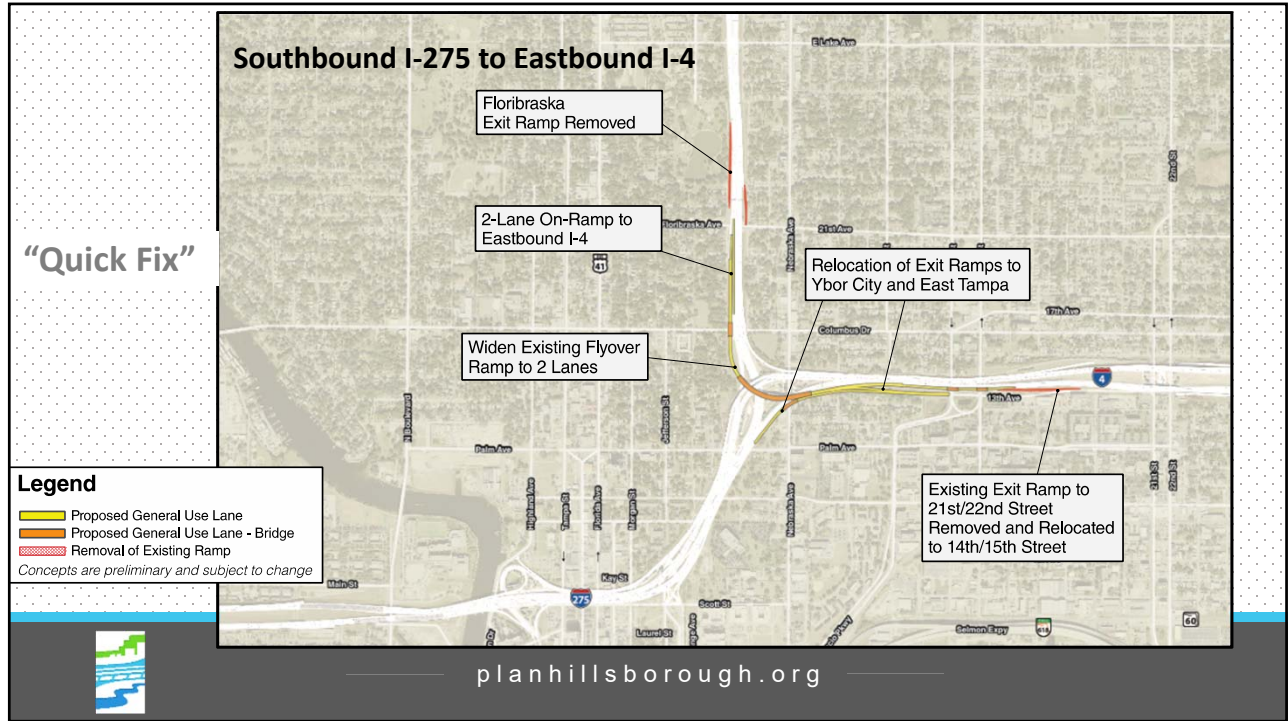


planhillsborough.org

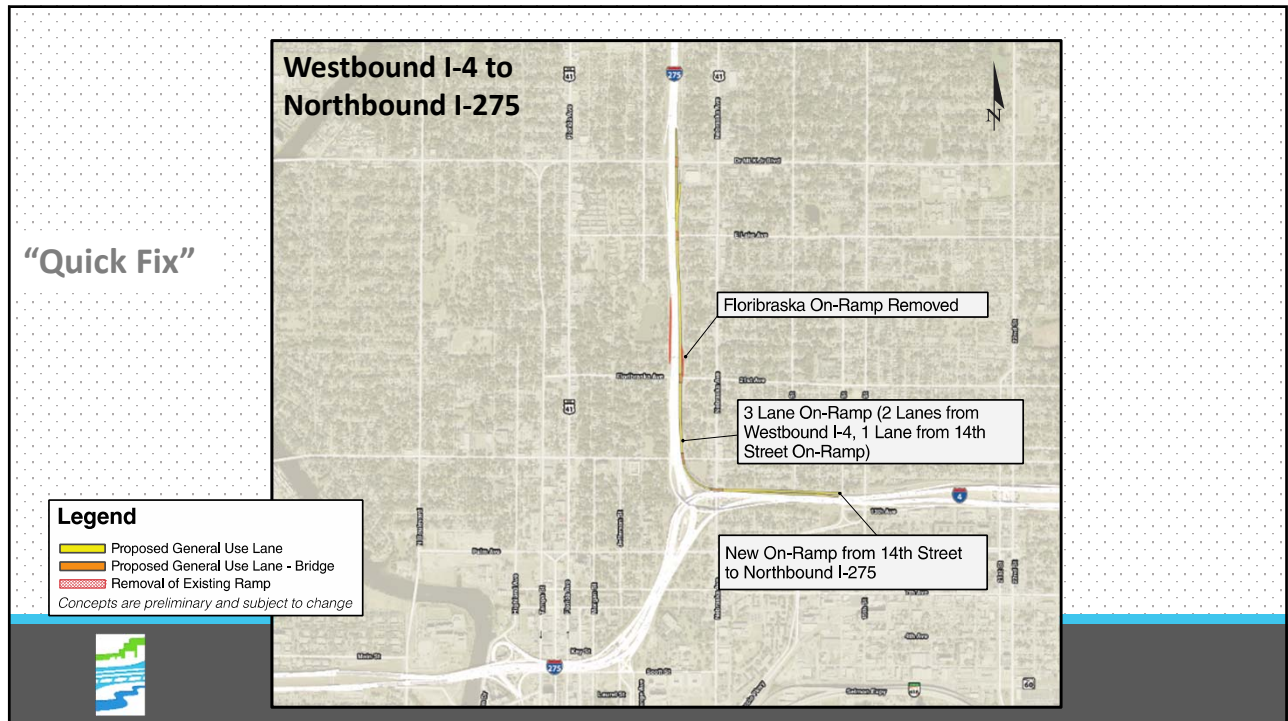
9



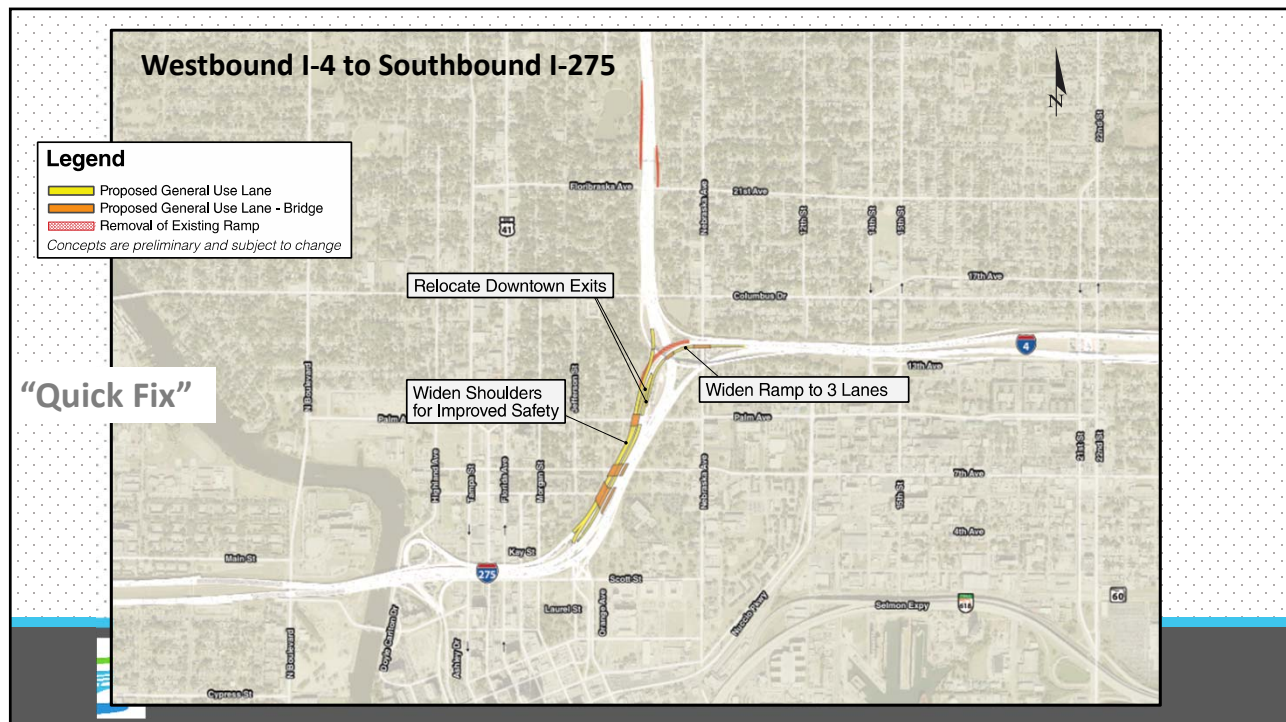
10



11



12



13

How Did We Evaluate the SEIS?

- MPO Motions following Public Hearings
 - ✓ 2016 & 2017 Transportation Improvement Program
- Other Observations
 - ✓ Review online documents (tampainterstatestudy.com)
 - ✓ Briefings
 - ✓ Open Houses



planhillsborough.org

14

Status of MPO Board Motions




Source	Item	Previous Engagement	MPO Special Session #1	MPO Special Session #2	MPO Special Session #3	SEIS Public Workshop	SEIS Public Hearing	Post PO&E
Public Involvement								
2016 MPO Motions/Resolutions	The MPO and FDOT create a structure of continued communication and feedback at a minimum quarterly, updates to the MPO regarding T&E.	✓						
2016 MPO Motions/Resolutions	Formation of community working groups	✓						
2016 MPO Motions/Resolutions	Provide 14 day comment period after the public hearing.						✓	
Environmental Documentation								
2016 MPO Motions/Resolutions	FDOT present the MPO with commitments the FDOT is prepared to make as a result of the TIS SEIS.						✓	✓
2016 MPO Motions/Resolutions	A finalized study and report on human impact that delineates the total number of homes and multi-family dwelling complexes and businesses, displayed in a map and showing individual parcels		✓			✓	✓	
2018 MPO Motions/Resolutions	A finalized study and report on human impact that delineates the impacts on affordable housing and how to pay for replacing them		✓					
2016 MPO Motions/Resolutions	Final neighborhood plan for displaced residents and businesses, including design elements						✓	
2016 MPO Motions/Resolutions	LONG-TERM ENVIRONMENTAL IMPACT STUDIES FOR EACH SEGMENT						✓	
2016 MPO Motions/Resolutions	Traffic and revenue studies that would analyze and provide justification for toll lanes				✓	✓	✓	
2016 MPO Motions/Resolutions	Provide an Economic Impact Study that addresses cost of ad valorem tax revenue lost to the City of Tampa due to TIS SEIS project	✓	✓			✓	✓	
2016 MPO Motions/Resolutions	Air Quality update			✓		✓	✓	
Other Motions								
2016 MPO Motions/Resolutions	Follow-up reporting on the FDOT sponsored premium transit study that will be conducted by HART, to include reevaluation of the CNK named rail corridor.	✓						
2016 MPO Motions/Resolutions	Status updates on the Federal Civil Rights investigation of the TD Next project	✓						
2016 MPO Motions/Resolutions	City DEM costs							✓
2018 MPO Motions/Resolutions	Remove all express toll lanes on I-275 north of downtown from consideration	✓						
Public Comments								
Other Elements	Water quality/Stormwater Management			✓		✓	✓	
Other Elements	Noise contours and noise sensitive sites			✓		✓	✓	
Other Elements	Health and Sustainability			✓				

15

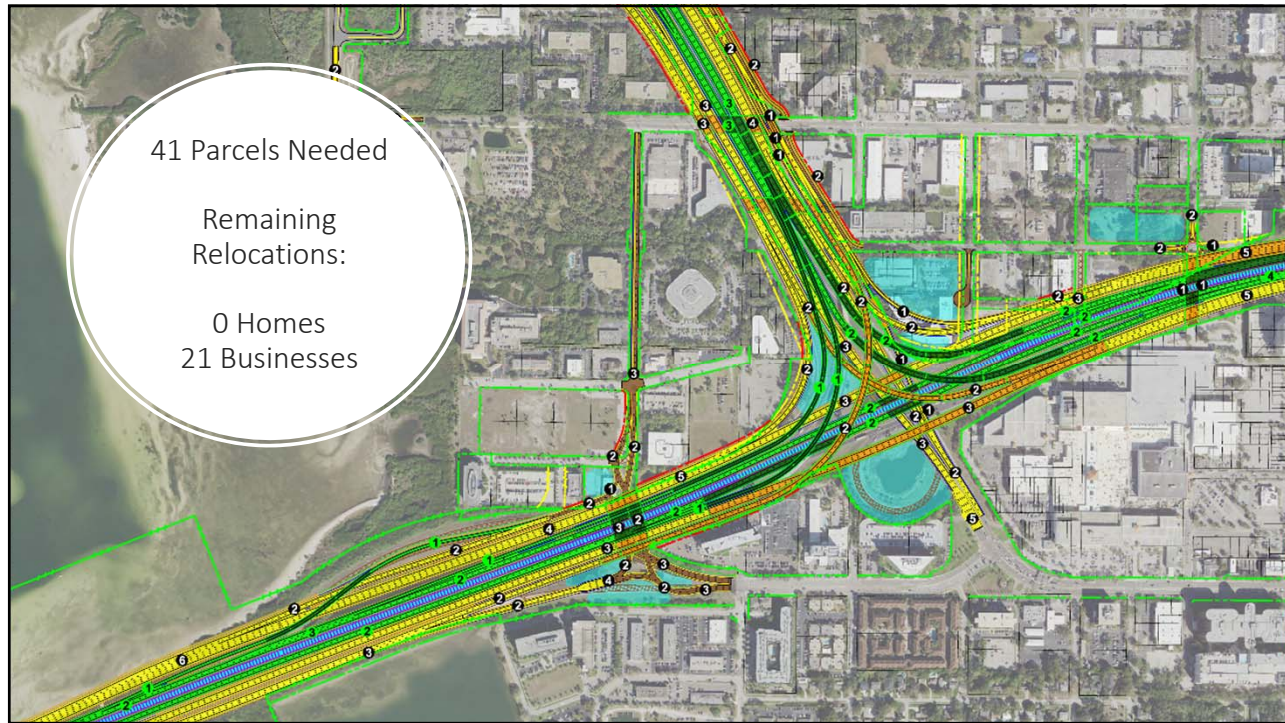
Motion: Human Impact

- Parcels Needed for Right-of-Way (ROW)
- Relocated Homes & Businesses
- Affordable Housing



planhillsborough.org

16



17

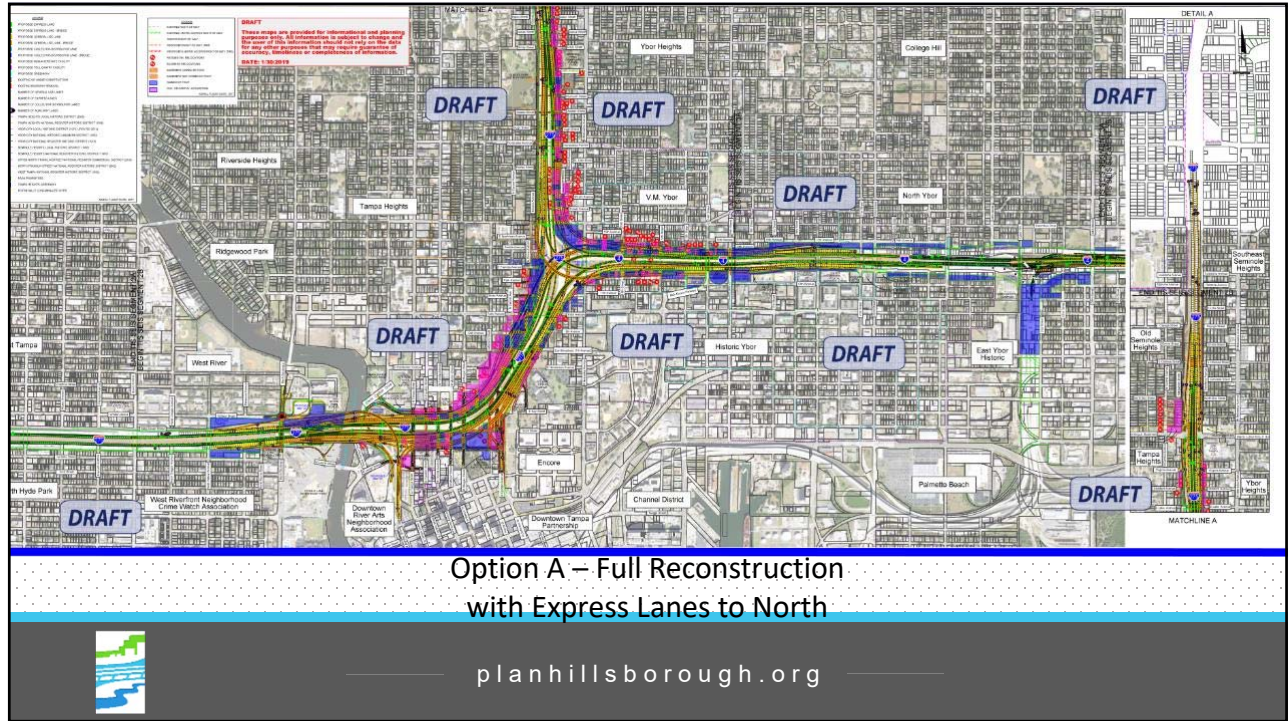
Downtown Interchange

Parcels Needed
Relocations

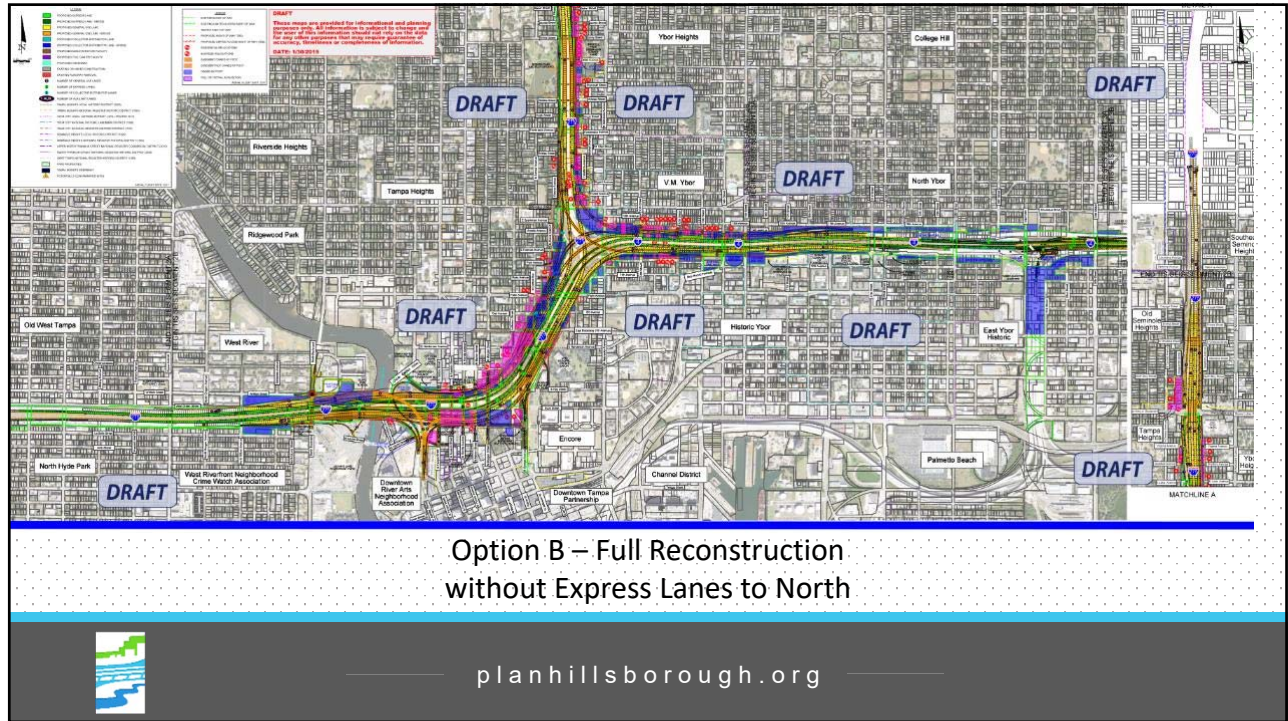
Tampa Interstate Study (TIS) Section		2B I-275 from east of Rome Ave. to north of MLK Jr. Blvd. and I-4 from I-275 to east of 14th St.				
Tampa Bay (TB) Next Section		6				
Alternative and Design Option	No Further Action (No Build)	2018 Express Lane				
		A	B	C	D	
		Reconstructed Interchange with Express Lane Connection to the North	Reconstructed Interchange without Express Lane Connection to the North	Existing Interchange with Elevated Express Lanes (South/East Side of I-275)	Existing Interchange with Elevated Express Lanes (North/West Side of I-275)	
ROW Impacts	Number of Parcel Impacted/Already Purchased/Remaining to Purchase	165/165/0	369/160/209	338/156/182	162/106/56	200/133/67
	Business Relocations Remaining	0	52	47	8	17
	Residential Relocations Remaining	0	336	321	28	96

planhillsborough.org

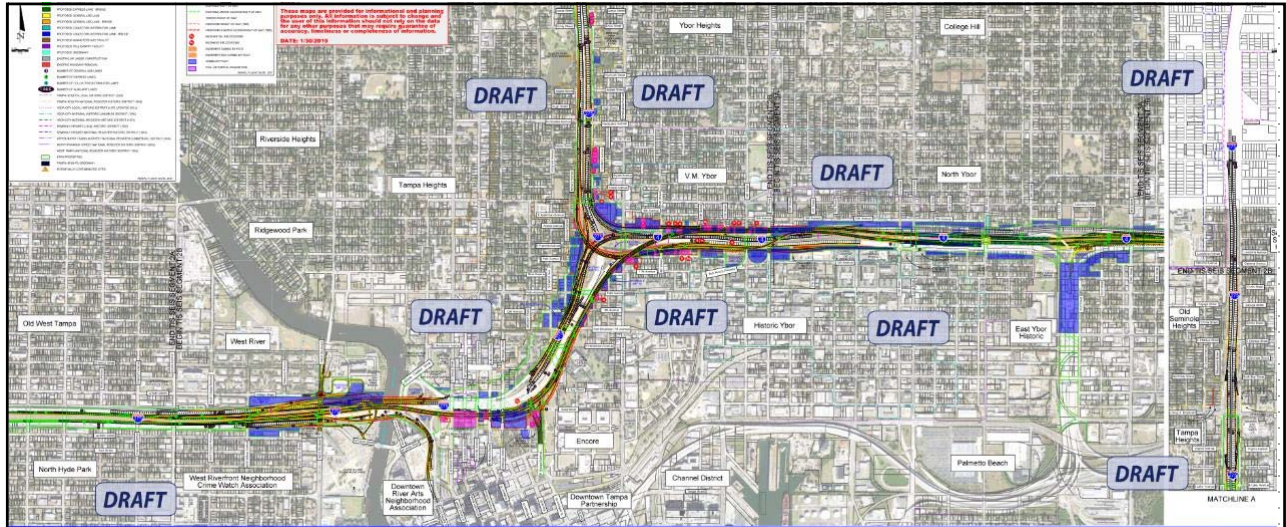
18



19



20

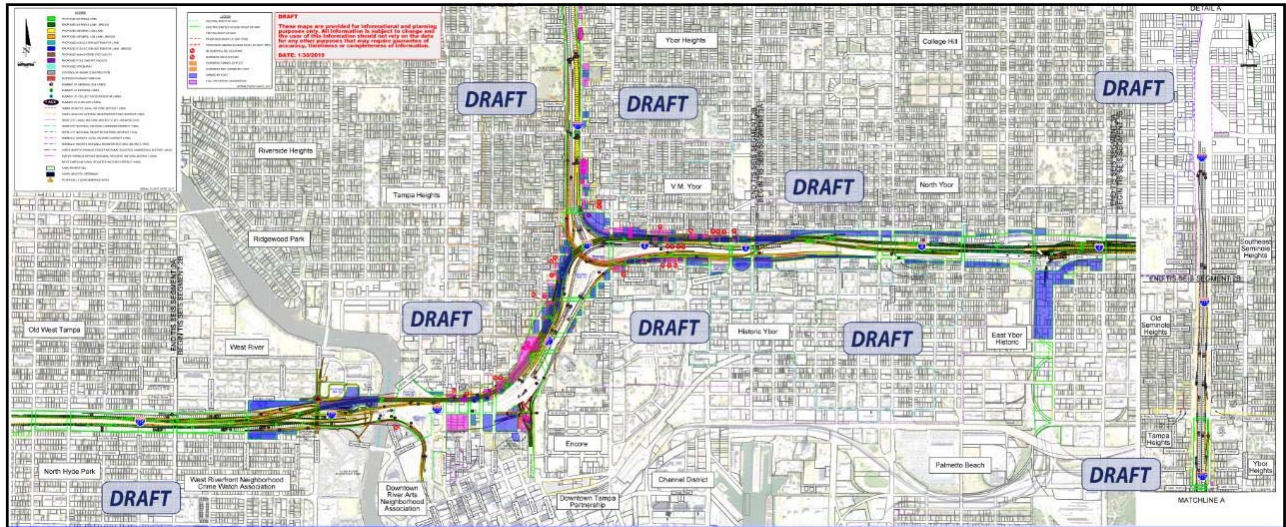


Option C – Elevated Express Lanes on South & East Side of Interchange



planhillsborough.org

21



Option D – Elevated Express Lanes on North & West Side of Interchange



planhillsborough.org

22

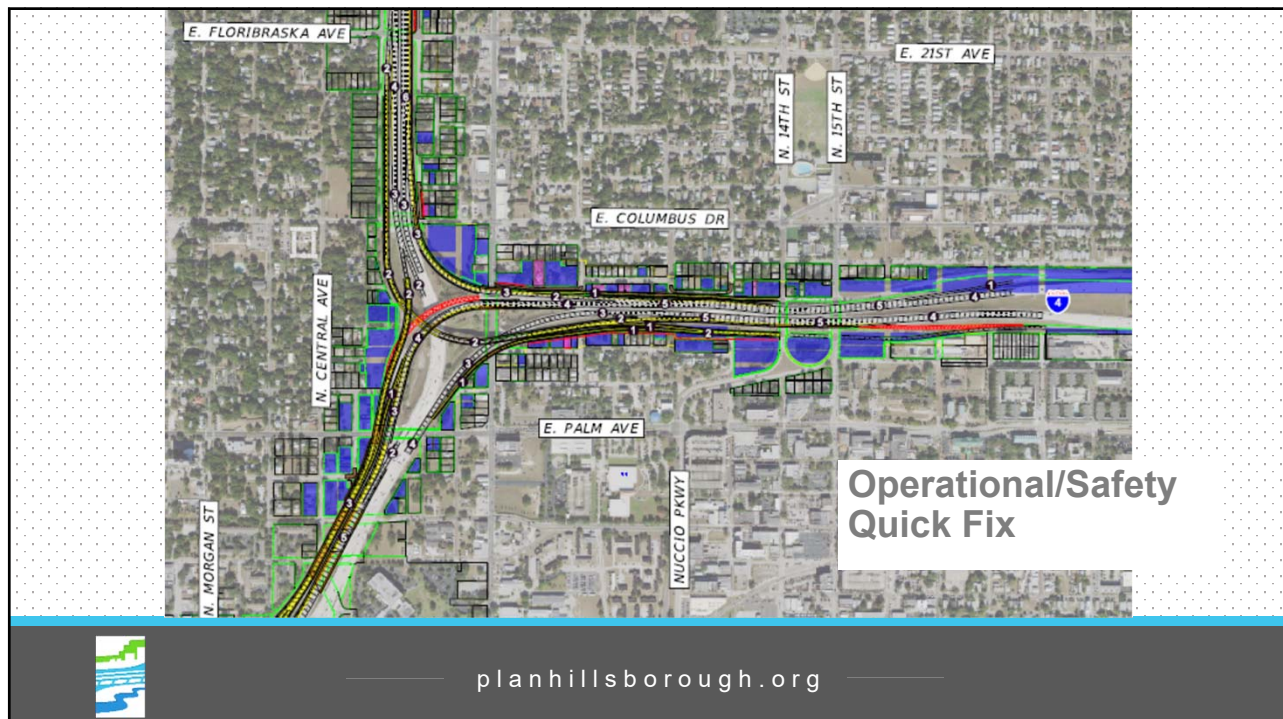
Operational/Safety Quick Fix

- < 10 parcels needed for ROW
- On NE side of Interchange



planhillsborough.org

23



planhillsborough.org

24

Motion: Affordable Housing & Displacement

- Nearby Low Income Populations
- Relocation Assistance to Displaced Persons & Businesses Includes
 - ✓ Finding Comparable Dwelling
 - ✓ Purchase Price Subsidies
 - ✓ Moving Cost Reimbursement
- **Request: document potentially removed affordable housing & relocations to date**



planhillsborough.org

25

Motion: Completed Environmental Impact Studies Documenting Impacts

All Segments

- ✓ Economic and Fiscal Impact Analysis
- ✓ Section 4(f) Parks and Recreational Resources Update
- ✓ Project Traffic Analysis
- ✓ Sociocultural Effects Evaluation
- ✓ Air Quality
- ✓ Cultural Resource Assessment Survey Update

Section 6 (Downtown)

- ✓ Contamination Screening Evaluation
- ✓ Pond Siting
- ✓ Natural Resources Evaluation
- ✓ Location Hydraulics

Section 4 & 5 (Westshore)

- ✓ Alternate Stormwater Management
- ✓ Contamination Screening Evaluation
- ✓ Location Hydraulics
- ✓ Natural Resources Evaluation
- ✓ Water Quality Impact Evaluation



planhillsborough.org

26

Other Potential Impacts (cont'd)

Requests:

- Mitigate Construction Impacts, e.g., build Noise Barriers first
- Consider Smart Work Zones
- Clarify Noise Barrier Locations in Design Phase
- Protect I-275/SR60 Interchange & connection to H. Frankland Bridge against potential floods & damage

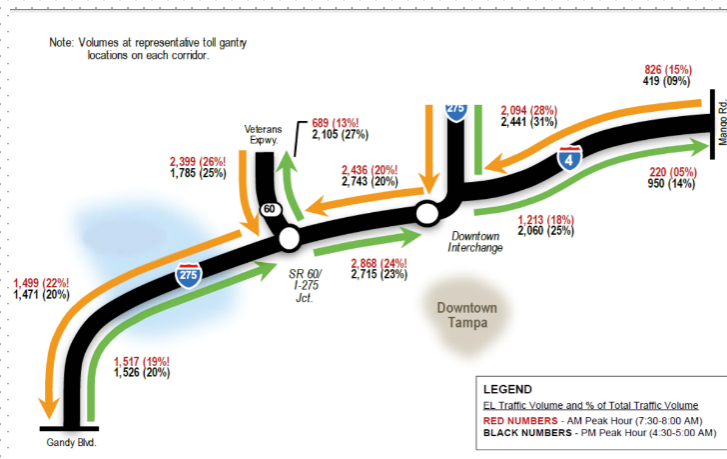


planhillsborough.org

27

Motion: Traffic & Revenue Studies Justifying Toll Lanes

Toll Lane Volumes & as Percent of Total Volumes



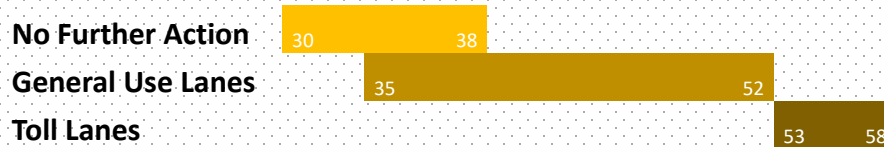
planhillsborough.org

28

Traffic & Revenue Studies Justifying Toll Lanes (cont'd)

Predicted Travel Speeds

Average AM/PM Speed (mph)

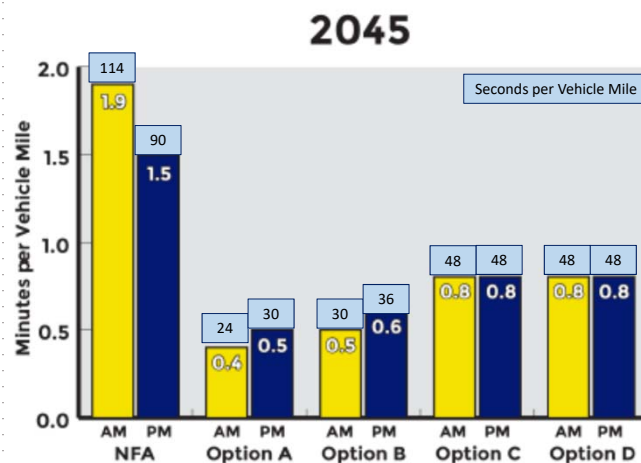


planhillsborough.org

29

Motion: Traffic & Revenue Studies Justifying Toll Lanes (cont'd)

Predicted Delay per Vehicle Mile



planhillsborough.org

30

Motion: Traffic & Revenue Studies Justifying Toll Lanes (cont'd)

- Potential impacts electronic tolling to low income populations without credit cards & bank accounts
- Requests:
 - ✓ Mitigation thru set-up fee waivers, alternative payment methods, waivers for transit, carpools, vanpools, reinvest excess toll revenue into community
 - ✓ Inform MPO of proposed toll rate policy

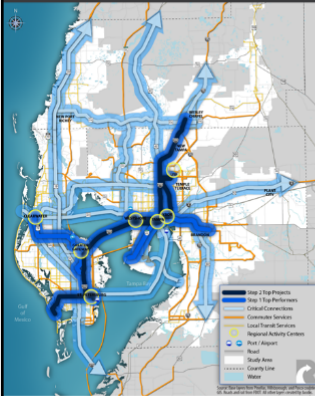


planhillsborough.org

31

Motion: Follow-up report on Premium Transit

STEP 3 EVALUATION: FIVE ALTERNATIVES



- ✓ I-275 Rubber Tire
- ✓ I-275 Urban Rail
- ✓ CSX Rubber Tire
- ✓ CSX Urban Rail
- ✓ CSX Commuter Rail

2017 LAND USE

- Employment
- Population density

2017 MOBILITY AND CONGESTION

- New riders
- Annual ridership

2017 ENVIRONMENTAL BENEFITS

2017 COST EFFECTIVENESS

Regional Transit
Feasibility Plan
www.TRRegionalTransit.com

STEP 3

- Regional Transit Feasibility Plan focused on I-275 & CSX corridors
- TBARTA now doing PD&E Study of I-275 Express Bus System
- Request more robust consideration of CSX lines as “catalyst”



planhillsborough.org

32

Motion: Status of Federal Civil Rights Investigation

- Dismissed in 2018 by FHWA Civil Rights Office



planhillsborough.org

33

Motion: Property Tax Revenue Lost Due to Right-of-Way Acquisition

- For Full Build Option
 - ✓ Tampa - \$491,422
 - ✓ County - \$1,347,018
- Most of parcels already acquired or under contract in Westshore District
- Analysis prepared for CRAs estimates
 - ✓ \$14K annual loss in TIF revenue for first four years
 - ✓ Annual gains over next four years of \$348K rising to \$788K
- **Request FDOT provide updated estimate for SEIS Final Preferred Alternative**



planhillsborough.org

34

Motion: Cost to City for O&M of Any Community Impact Mitigation

- FDOT working with City on features that could be a local responsibility
- **Request that FDOT update the MPO with cost estimates for any proposed landscaping or design features requiring local upkeep during the design phase.**



planhillsborough.org

35

Motion: Impact to Air Quality in Tampa

Carbon Monoxide modeled at 5 interchanges

- Tested Build Options A – D and No Further Action
- All predicted to be under national standard of 35 ppm
- Compared to No Further Action, Build Options predicted to lower CO levels except at:
 - ✓ I-275 & MLK Blvd (11.9 vs. 10.5 ppm 1-hr concentration in AM)
 - ✓ I-4 & 50th St (10.8 – 11.0 vs. 10.4 ppm 1-hr concentration in PM)



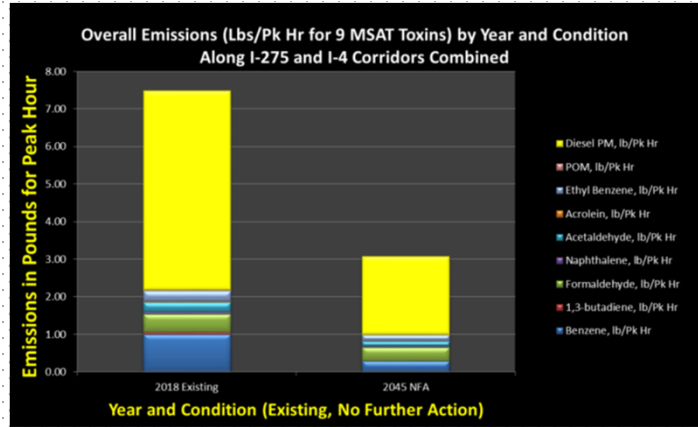
planhillsborough.org

36

Air Quality Impact (cont'd)

Mobile Source Air Toxics (MSAT)

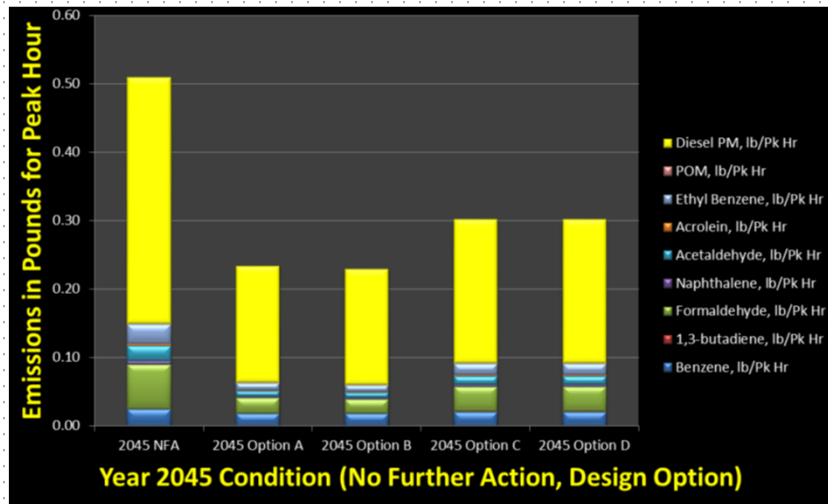
- Overall emissions decrease as speeds increase
- National tail-pipe standards for new vehicles projected to reduce MSAT by 90% by 2050



planhillsborough.org

37

Air Quality (MSAT) Impacts (cont'd)

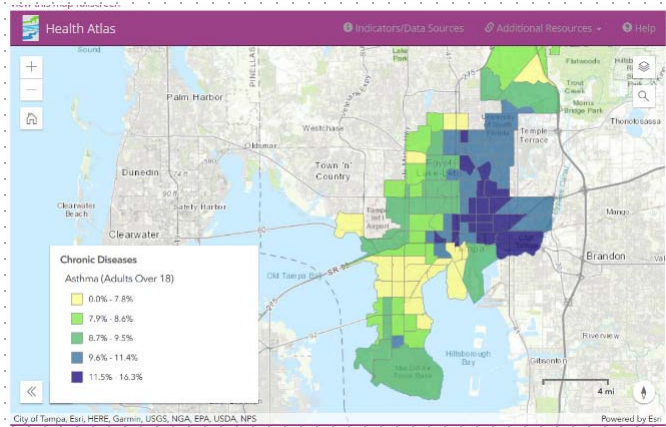


planhillsborough.org

38

Air Quality Impacts (cont'd)

- Higher Incidence of Asthma & Chronic Diseases in SEIS area
- **Request that Design Phase address Quality of Life & Health Outcomes, such as**
 - ✓ Construction Mitigation
 - ✓ Green Noise Walls
 - ✓ Greater Landscaping



planhillsborough.org

39

Other Concerns

- High Speed Traffic Encountering Bicyclists & Walkers at Exit Ramps
 - **Request presentation on new & reconfigured ramps**
 - **Request that Design Phase consider Strategies to slow drivers down, such as:**
 - ✓ Signage
 - ✓ Flashing Beacons
 - ✓ Rumble Strips
 - ✓ High Visibility Markings
- ✓ Reo St
 - ✓ W Kennedy Blvd
 - ✓ Hoover Blvd
 - ✓ Trask St
 - ✓ North Blvd
 - ✓ Ashley / Tampa Streets
 - ✓ 14th / 15th Streets
 - ✓ 13th Ave Frontage Rd



planhillsborough.org

40

Other Concerns (cont'd)

- **Prefer No New Ramps on North Blvd**
- **Request Clarification of Bike/Ped facilities on**
 - ✓ Reo St
 - ✓ Lemon St
 - ✓ E Frontage Rd
- **Request Design Phase address Closing Gaps in Trails & Greenways, and safety of cyclists & walkers**



planhillsborough.org

41



42

Other Concerns (cont'd)

Closure of Floribraska Ave Ramps

- City plans to remake as Complete Street
- East Tampa Revitalization Partnership concerns about adverse economic impacts without
 - ✓ Improved lighting, signalization, crosswalks, sidewalks, landscaping & gateway treatments
 - ✓ On Nebraska, Floribraska, & 21st Ave
 - ✓ **Request briefing on subsequent discussions w/ ETRP**



planhillsborough.org

43

Other Concerns (cont'd)

- **Request timeline for all community enhancements proposed in Heights Mobility Study**
- **More robust analysis of Induced Traffic**
 - ✓ Including traffic from outside study area
 - ✓ Considering effect on regional land use patterns



planhillsborough.org

44

Summary of Requests

Draft

- Document Removal of Affordable Housing & Where Residents have been Relocated
- Mitigate Construction Impacts
- Consider Smart Work Zones
- Clarify Noise Barrier Locations in Design Phase & Build Them First
- Mitigate Electronic Toll Collection on Low Income & Inform MPO of Toll Rate Policies
- Consider Protection of I-275/SR60 Interchange from Flooding
- More Robust Consideration of Reuse of CSX Lines as “Catalyst”
- Provide updated Tax Loss Estimate for SEIS Final Preferred Alternative
- Update cost estimates for landscaping or design features requiring local upkeep



planhillsborough.org

45

Summary of Requests (cont'd)

Draft

- Design Phase address Quality of Life & Health Outcomes, such as
 - ✓ Construction Mitigation
 - ✓ Green Noise Walls
 - ✓ Greater Landscaping
- Design Phase consideration of Strategies to slow drivers down, such as:
 - ✓ Signage
 - ✓ Flashing Beacons
 - ✓ Rumble Strips
 - ✓ High Visibility Markings
- Clarification of Bike/Ped facilities on
 - ✓ Reo St
 - ✓ Lemon St
 - ✓ E Frontage Rd
- Address Closing Gaps in Trails & Greenways in Design Phase
- Brief MPO on Discussions with E Tampa Revitalization Partnership, including Timeline for Enhancements
- More Robust Analysis of Induced Traffic



planhillsborough.org

46