



Plant City Bicycle and Pedestrian Master Plan

Project Update – March 2, 2017



Hillsborough MPO
Metropolitan Planning
for Transportation

ATKINS



NOV

Project Kickoff

DEC/
JAN

Plan Review/Field Work

FEB/
MAR

Public Meeting/Coordination
Meetings
Develop Draft Plan

APR/
MAY

Finalize Plan



Public Meeting

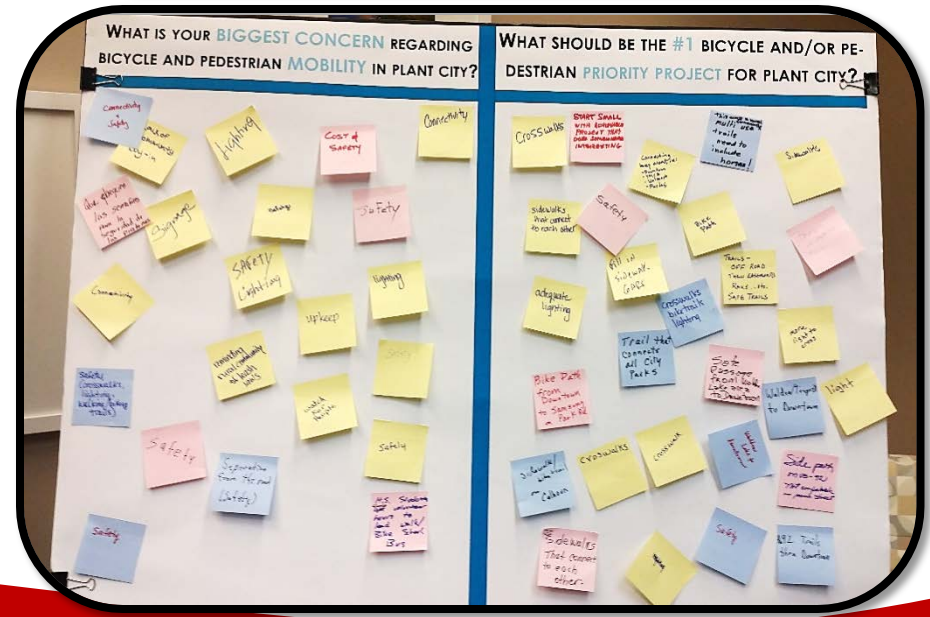
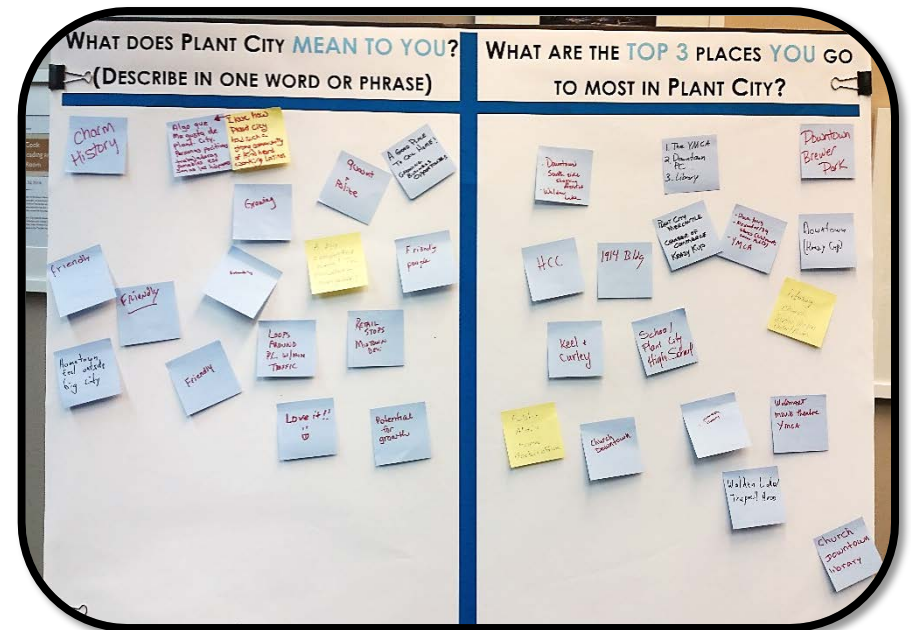
February 2nd, 2017

4:30 – 7:30 PM, Bruton Memorial Library

WHAT WE HEARD – PUBLIC INPUT SUMMARY
Plant City Bicycle and Pedestrian Master Plan

- ~ 40 attended, 30 signed in
 - Majority from Walden Lakes area and central/downtown Plant City
- Maps: 3 Points of Interest added
 - Boys and Girls Club, YMCA, Strawberry Festival Grounds
- General Comment Map:
 - High traffic areas, connect Walden Lakes to Downtown, lighting improvements, trails and trail heads

- What does Plant City mean to you?
 - Friendly, Community
- What are the top 3 places you go to?
 - Downtown, Church, Park
- Biggest concern w/bicycle and pedestrian mobility?
 - Lighting, safety, connectivity
- #1 bicycle/pedestrian priority project?
 - Lighting, crosswalks, trails



- Comment Forms
 - Connectivity points
 - Difficult to find places to run
 - Lack of sidewalks and sidewalk connectivity
 - Need for connecting north Plant City to downtown



Bicycle and Pedestrian Master Plan Draft Outline

DRAFT PLAN OUTLINE

Plant City Bicycle and Pedestrian Master Plan

Introduction

– Vision

- Goals

– Executive Summary

- Community Priorities
- Existing Conditions
- Recommendations (By Walking, Biking, Trail)
- Action Plan

Community Priorities

– Key Themes

- Maintain the city character
- Concern for bicycle and pedestrian safety
- Connect residences with destinations
- Build a functional network

• Existing Conditions

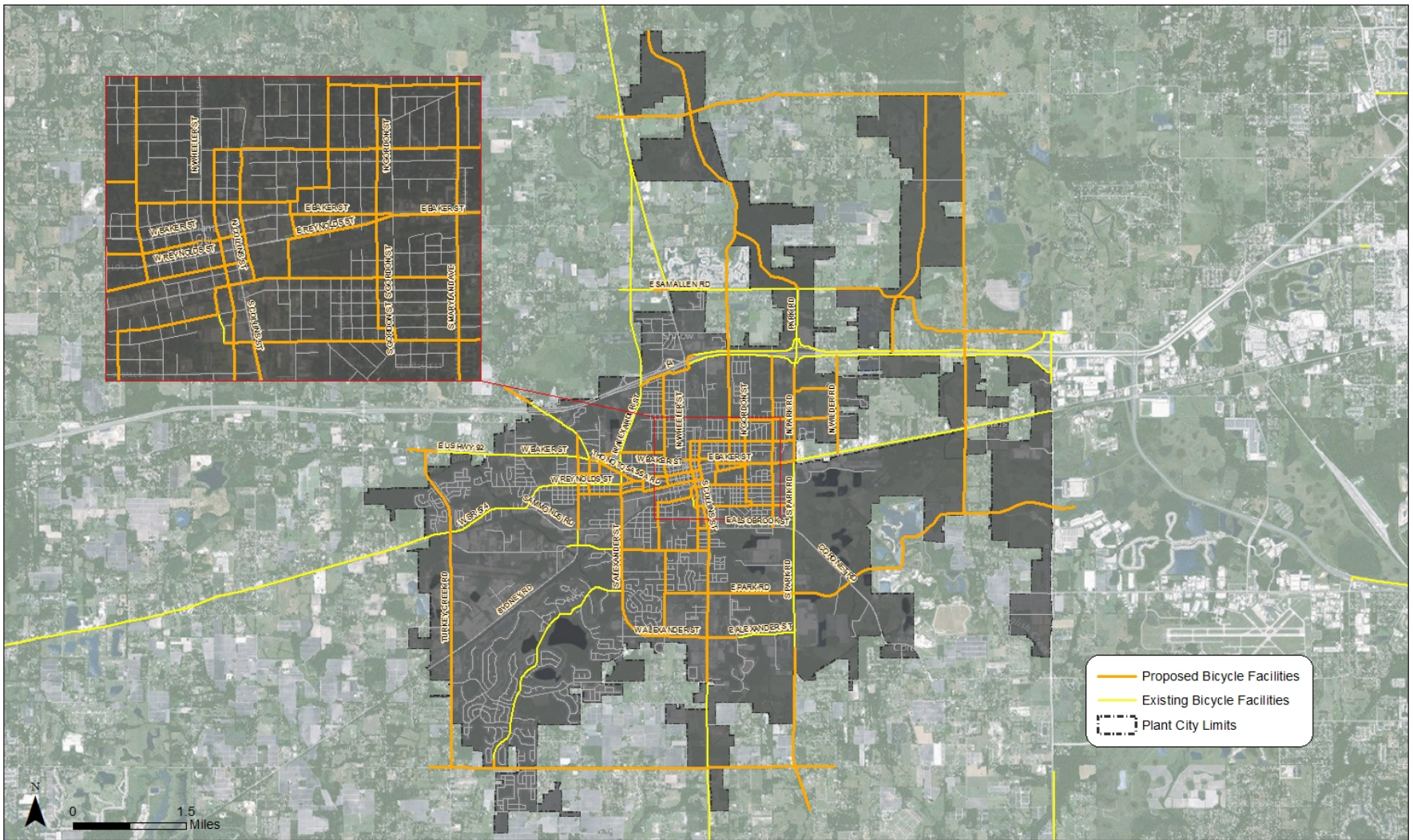
- Community Profile
 - Age, Commute to Work, Crashes
- Walk Friendly and Bike Friendly Evaluation and Achievement Steps
- Where are sidewalks, bikeways, trails?

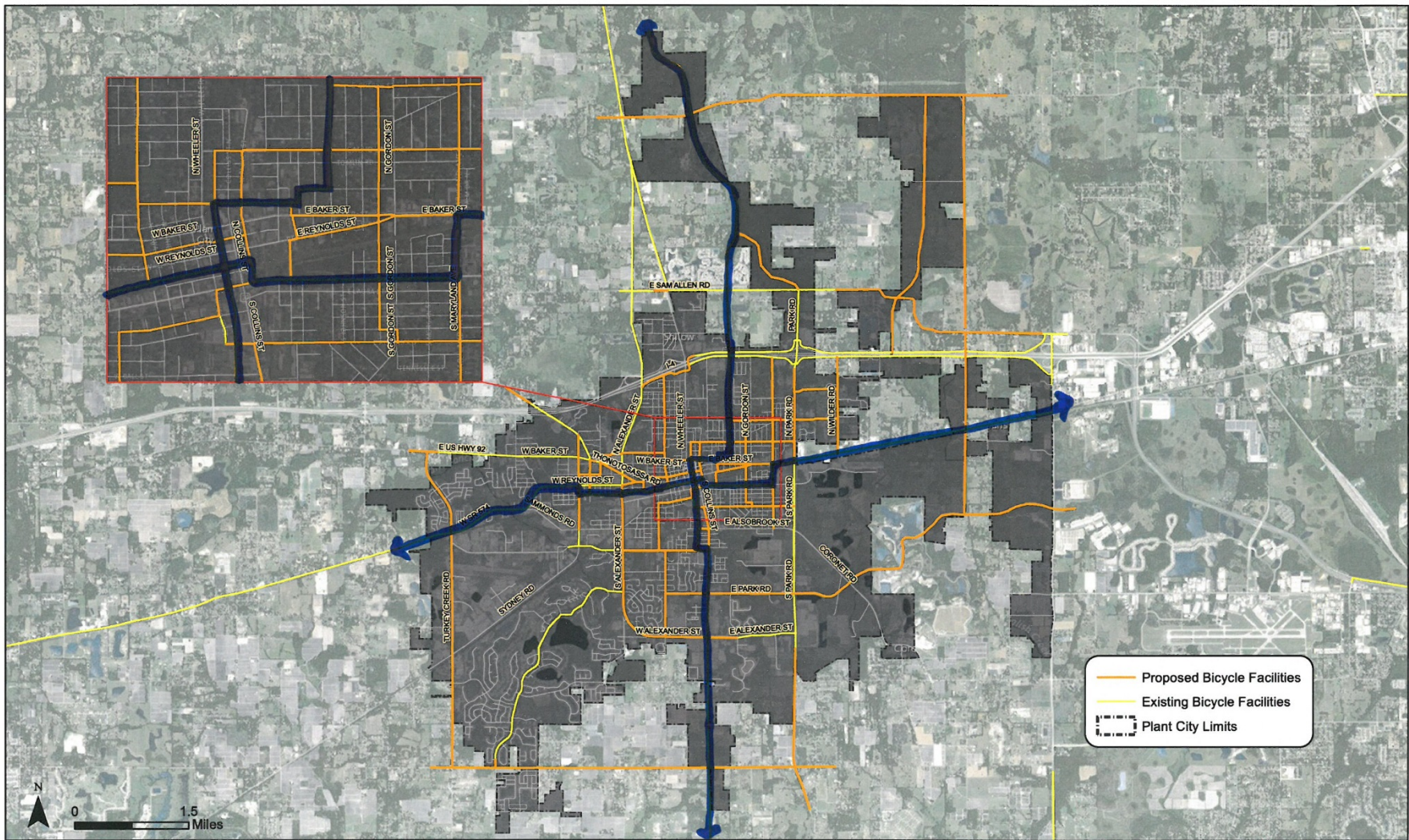
• Recommendations

– Programs and Policy

- Adopt Complete Streets Policy
- Participate in regional Vision Zero initiative
- Alert Today Alive Tomorrow
- Safe Routes to Schools
- Wayfinding Program
- Downtown Bicycle User Map
- Bike Share

Overall Bicycle Network





Priority Projects Identification

PRIORITY PROJECTS

Plant City Bicycle and Pedestrian Master Plan

Key Elements

- Map highlighting project extents
- Project description
- Key issues
- Photo simulation
- Implementation strategy

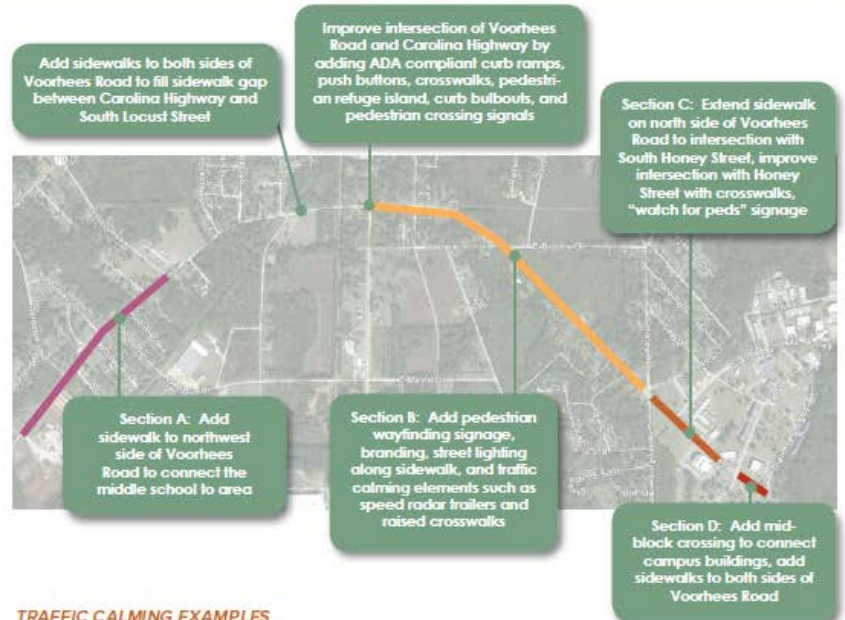
Voorhees Road

AT A GLANCE ▶ This important street provides a direct connection from Voorhees College and Denmark Technical College to downtown Denmark. The corridor also functions as an important pedestrian link between the Denmark-Olar Elementary School and nearby neighborhoods.

Key Issues ▶ There is a perceived divide between downtown and the colleges in Denmark that discourages residents and students from walking between these two local anchors. Fast-moving cars, few crossings and limited sidewalks make this an unsafe space for pedestrians and bicyclists. A lack of lighting makes the area particularly uninviting at night.

Implementation Strategy ▶ Coordinate with the local colleges for a corridor improvement project. Phase 1 may include interim traffic calming solutions like lane narrowing, temporary bulbouts, raised crosswalks, and speed trailers. Phase 2 of improving this corridor should include reduced speed limits, permanent installations and further enhance accessibility for pedestrians.

PROPOSED CORRIDOR IMPROVEMENTS



TRAFFIC CALMING EXAMPLES

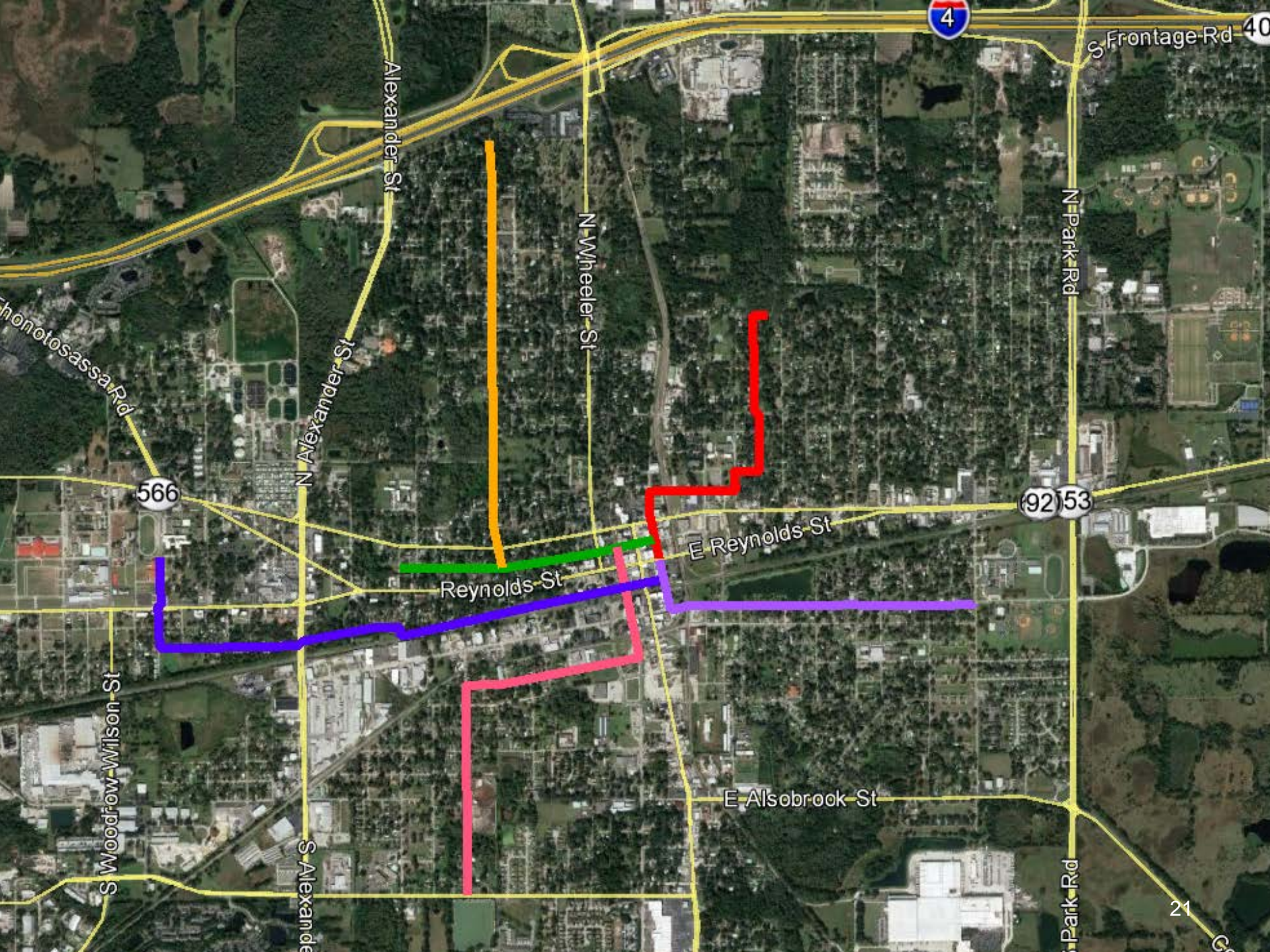


RECOMMENDED IMPROVEMENTS

- ▶ Traffic Calming
- ▶ Curb Extensions
- ▶ Wayfinding Signage
- ▶ Sidewalk Maintenance
- ▶ Pedestrian-Scale Lighting
- ▶ Street Furniture
- ▶ ADA Compliance
- ▶ Crossing Improvements

SEPTEMBER DRAFT | 59

- **Create** minimum on-street BIKEWAY GRID to the CORE OF PLANT CITY
- **Connect** to MAJOR DESTINATIONS
- **Connect** all four quadrants of NEIGHBORHOODS adjacent to Downtown Plant City TO DOWNTOWN.



4

S Frontage Rd 40

N Park Rd

N Wheeler St

Alexander St

N Alexander St

566

Thonotosassa Rd

92 53

E Reynolds St

Reynolds St

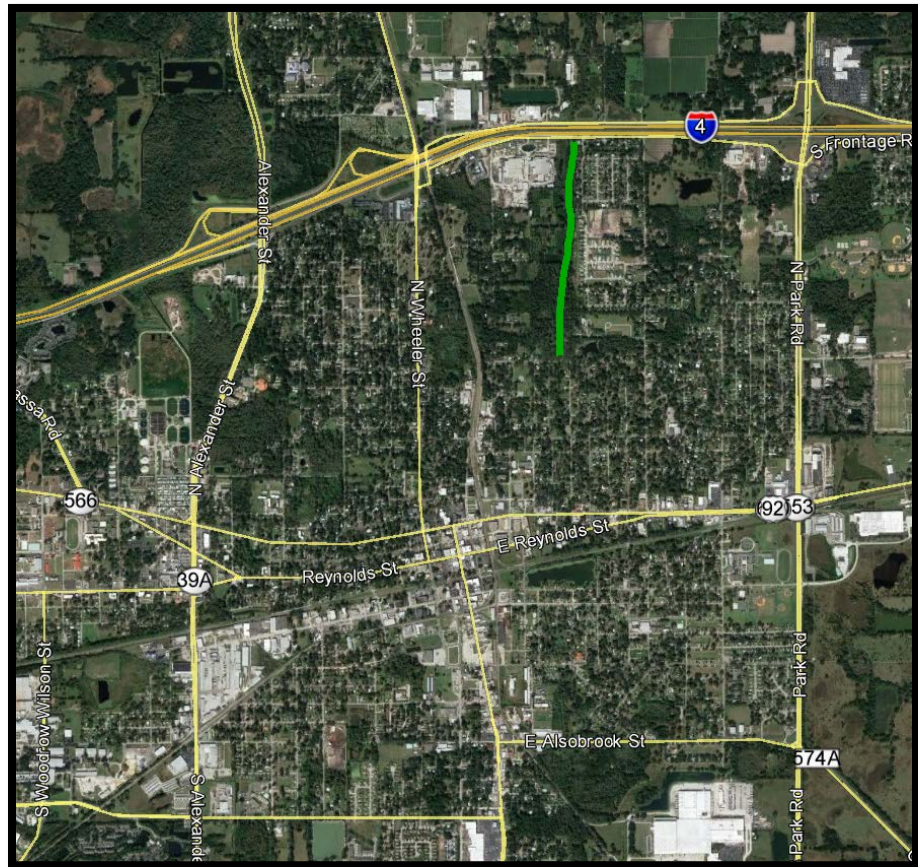
E Alsobrook St

S Woodrow-Wilson St

S Alexander St

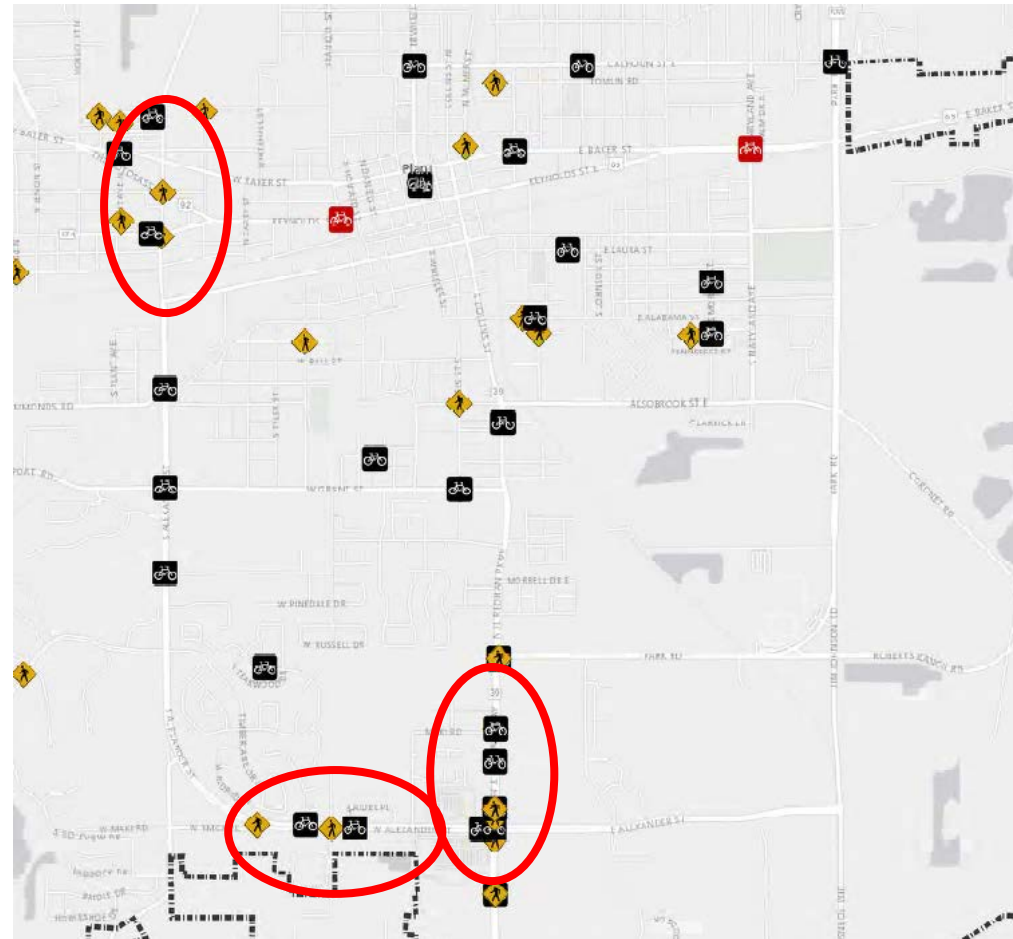
N Park Rd

- **Create** beginning of LARGER TRAIL NETWORK
- **Enhance** NETWORK CONNECTIVITY from Frontage road to DOWNTOWN PLANT CITY – attract area cyclists from Lakeland and Tampa
- **Create** LOCAL NEIGHBORHOOD CONNECTION



PRIORITY PROJECT #2: CANAL TRAIL
Plant City Bicycle and Pedestrian Master Plan

- **Focus** PEDESTRIAN IMPROVEMENTS where they are NEEDED TODAY
- **Address** top 3 bike/ped CRASH CLUSTER LOCATIONS



Next Steps

- Complete Walking & Bicycling Assessments
- Identify bicycle network facility recommendations
- Steering Committee Meeting to finalize recommendations & policies
- Complete draft document
- Present to Plant City City Commission
- Finalize document
- Present to Hillsborough MPO Committees & Board