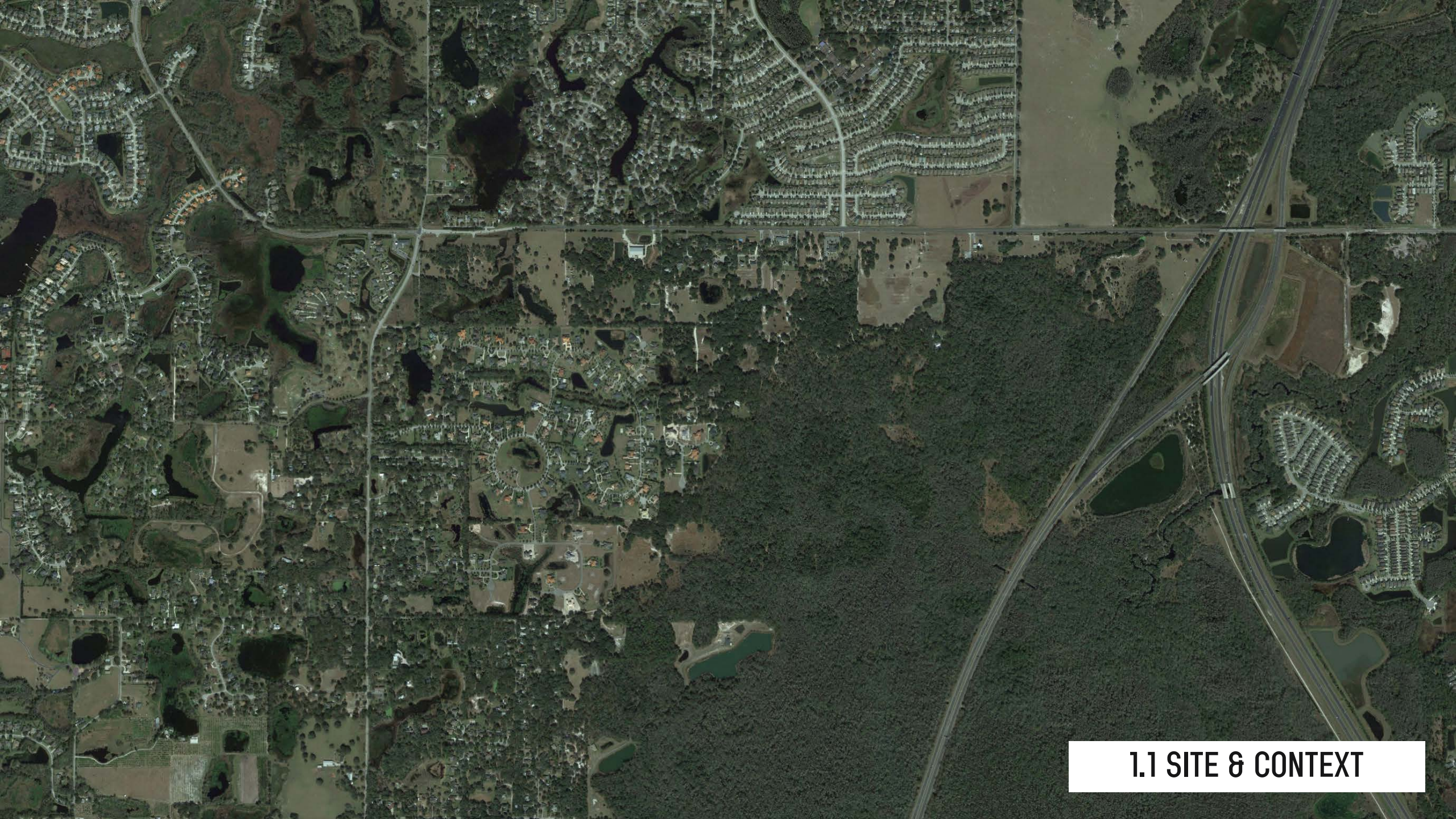


# FROM BIFURCATION TO BOULEVARD:

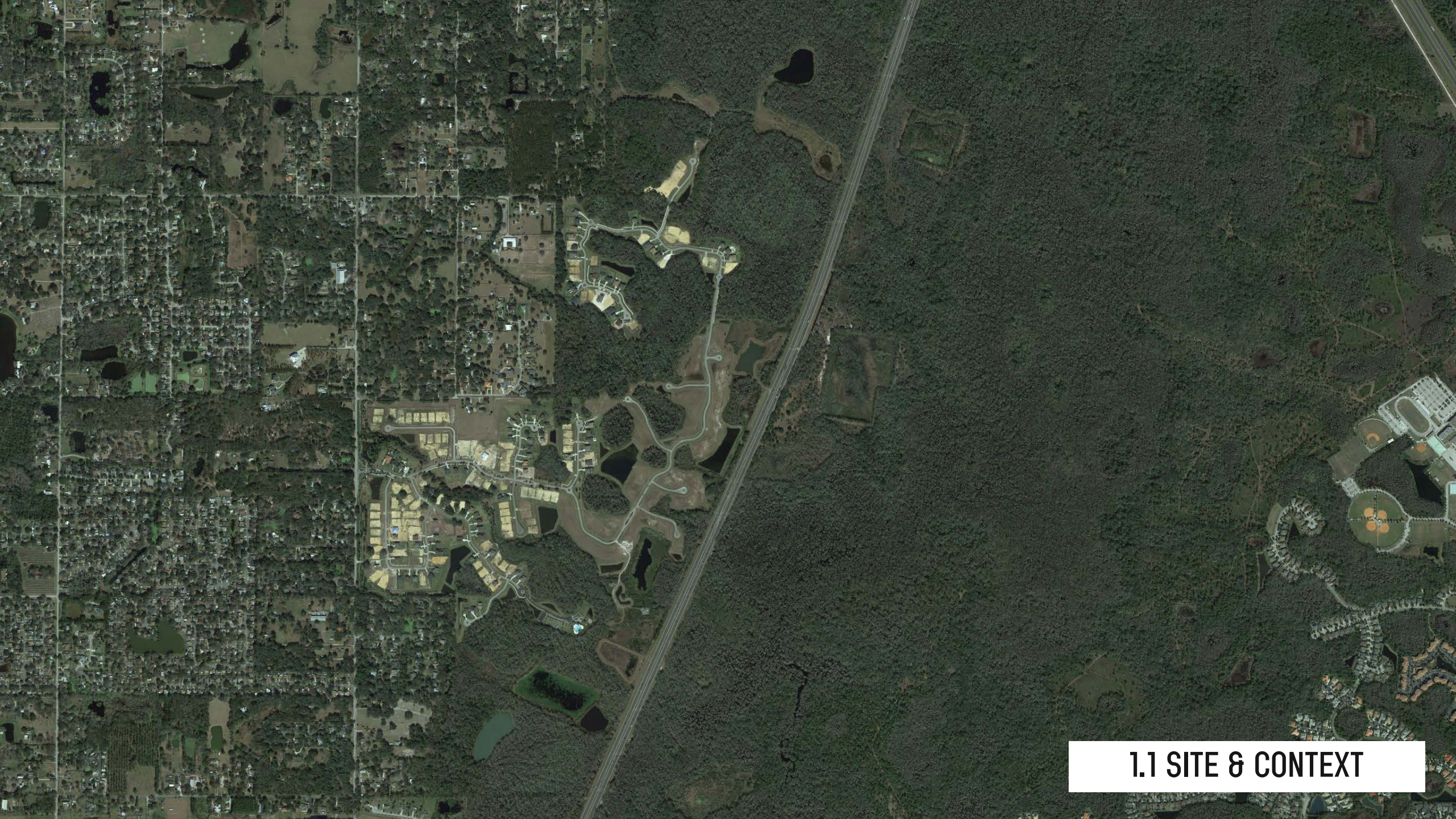
Tampa's Future Without I-275



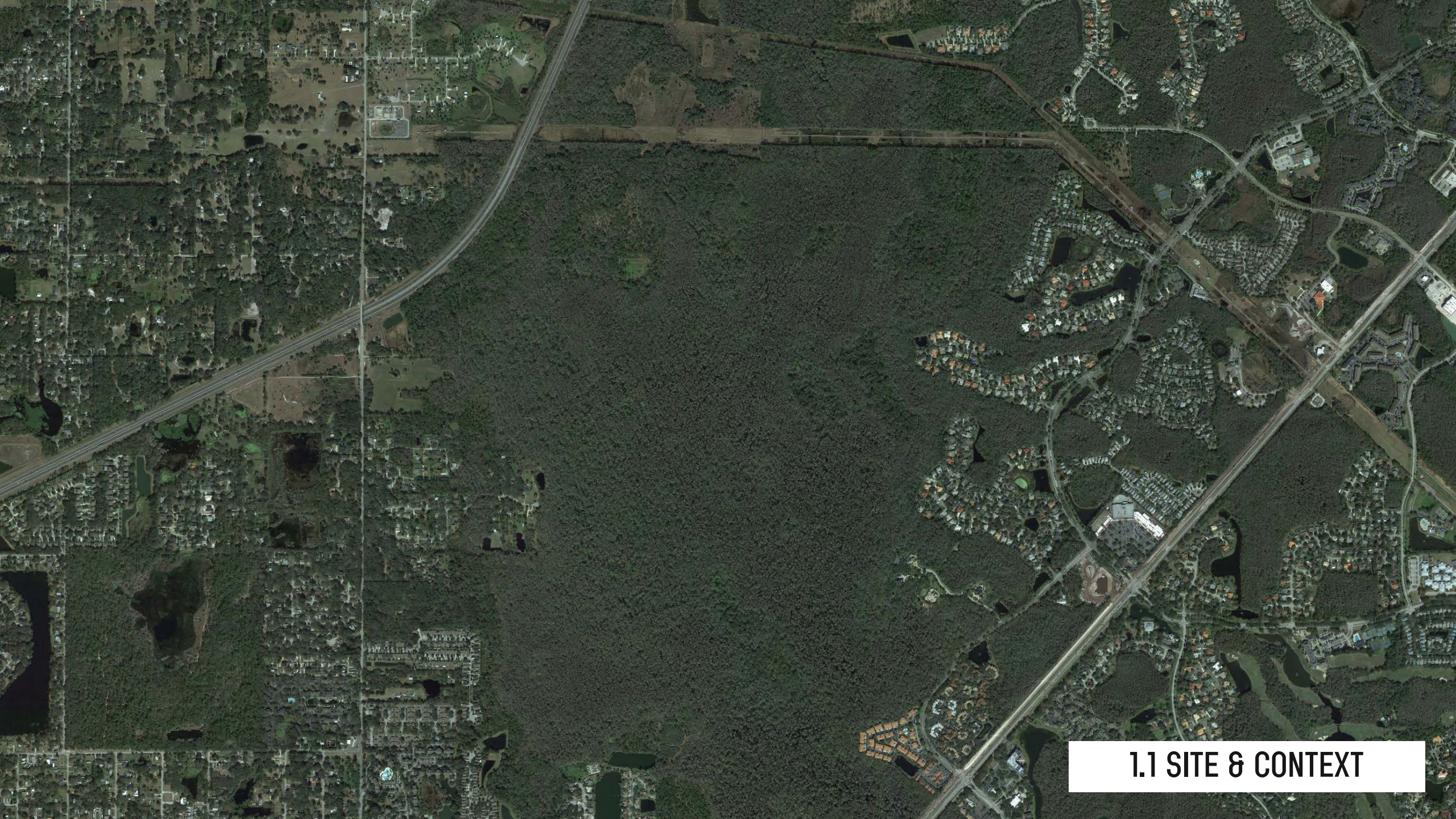
**1.1 SITE & CONTEXT**



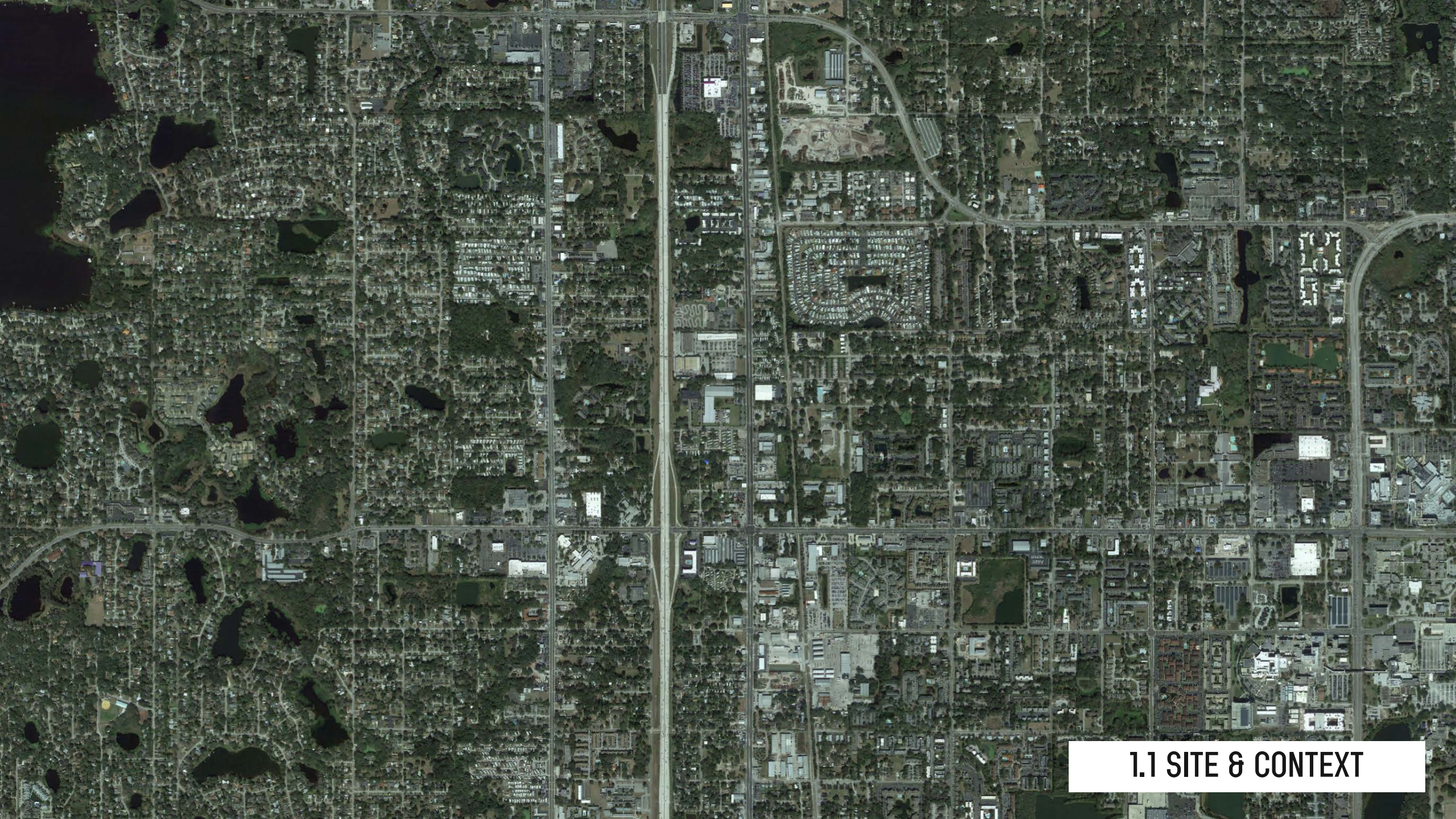
**1.1 SITE & CONTEXT**



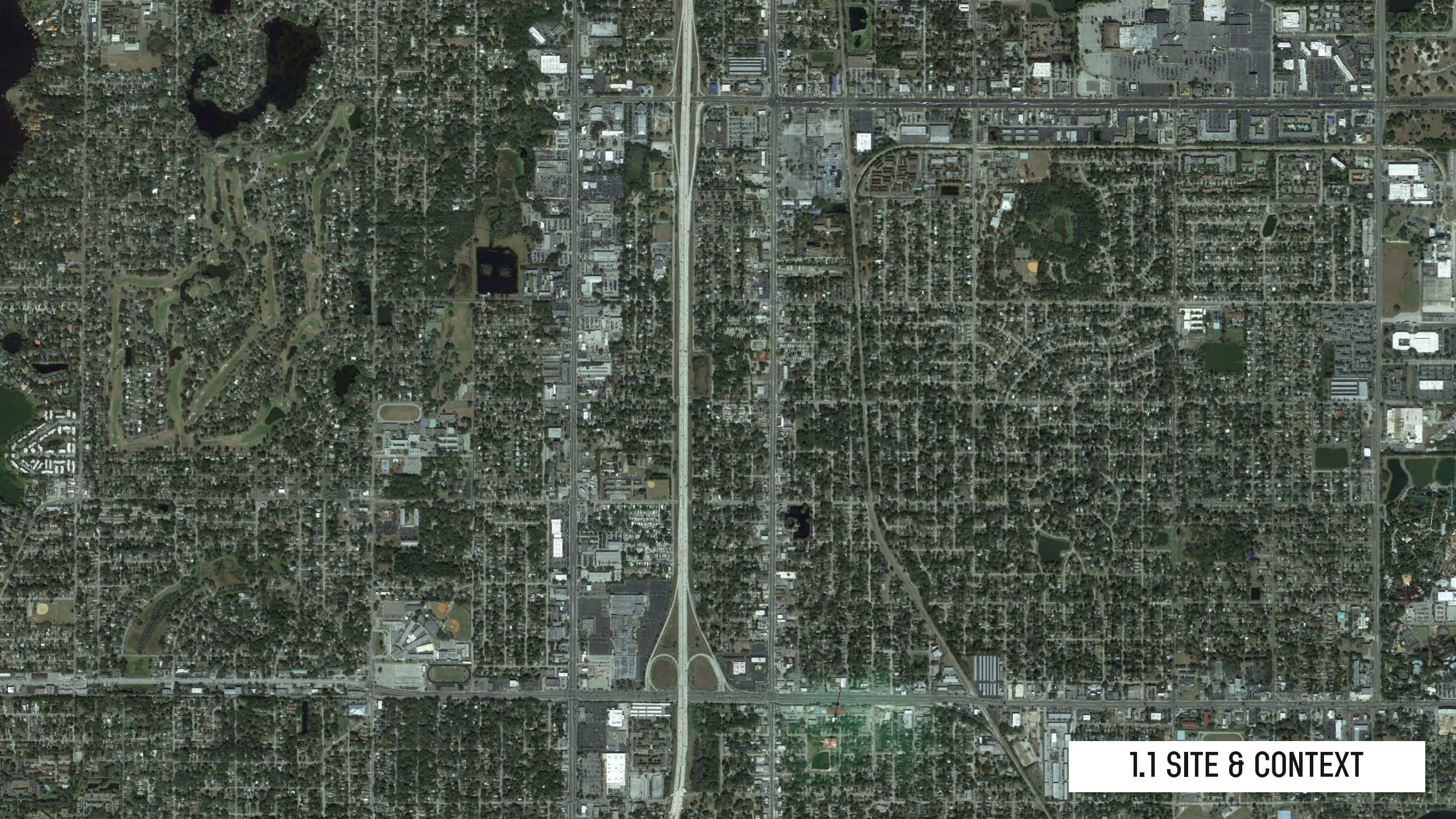
**1.1 SITE & CONTEXT**



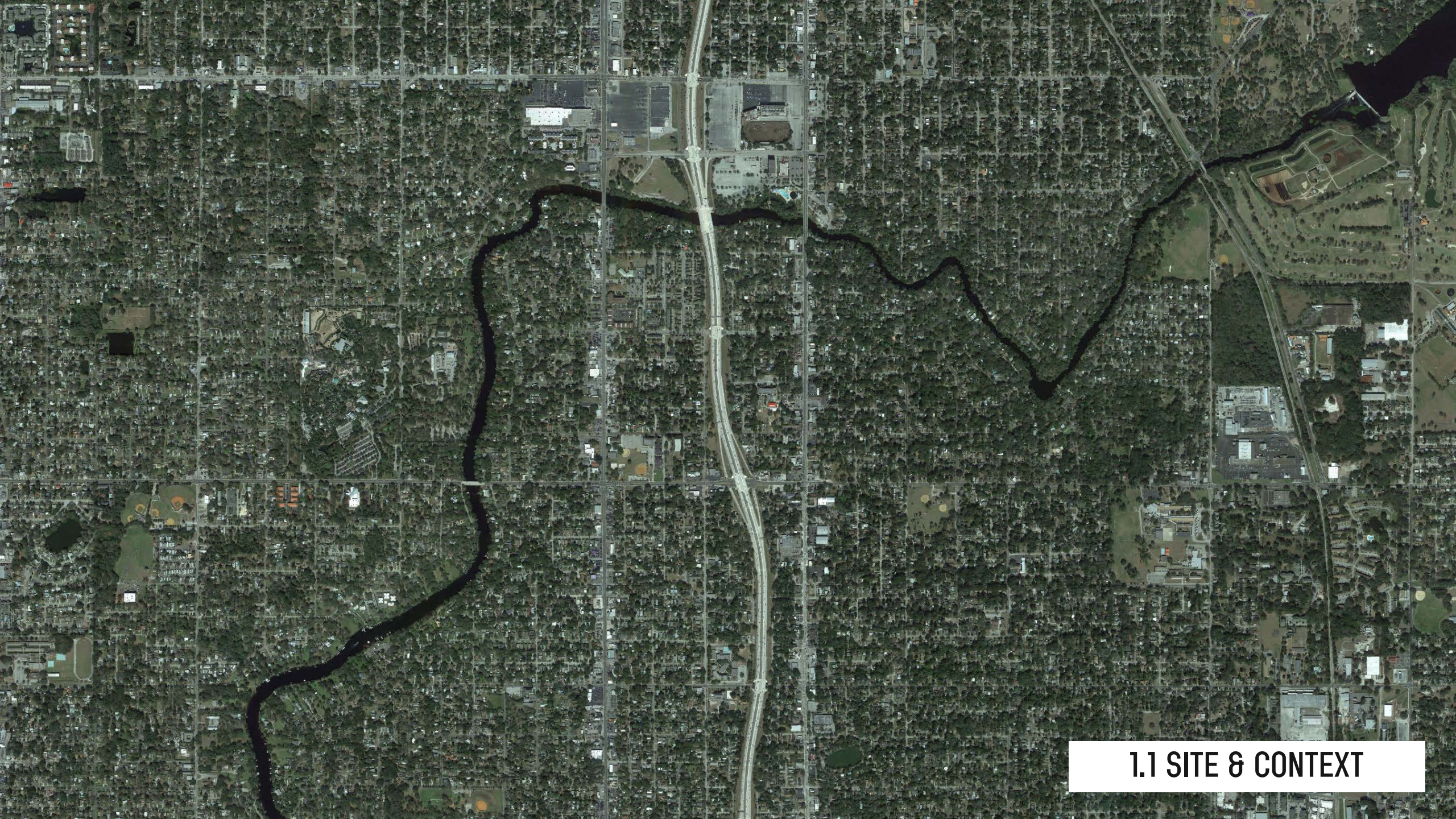
**1.1 SITE & CONTEXT**



**1.1 SITE & CONTEXT**

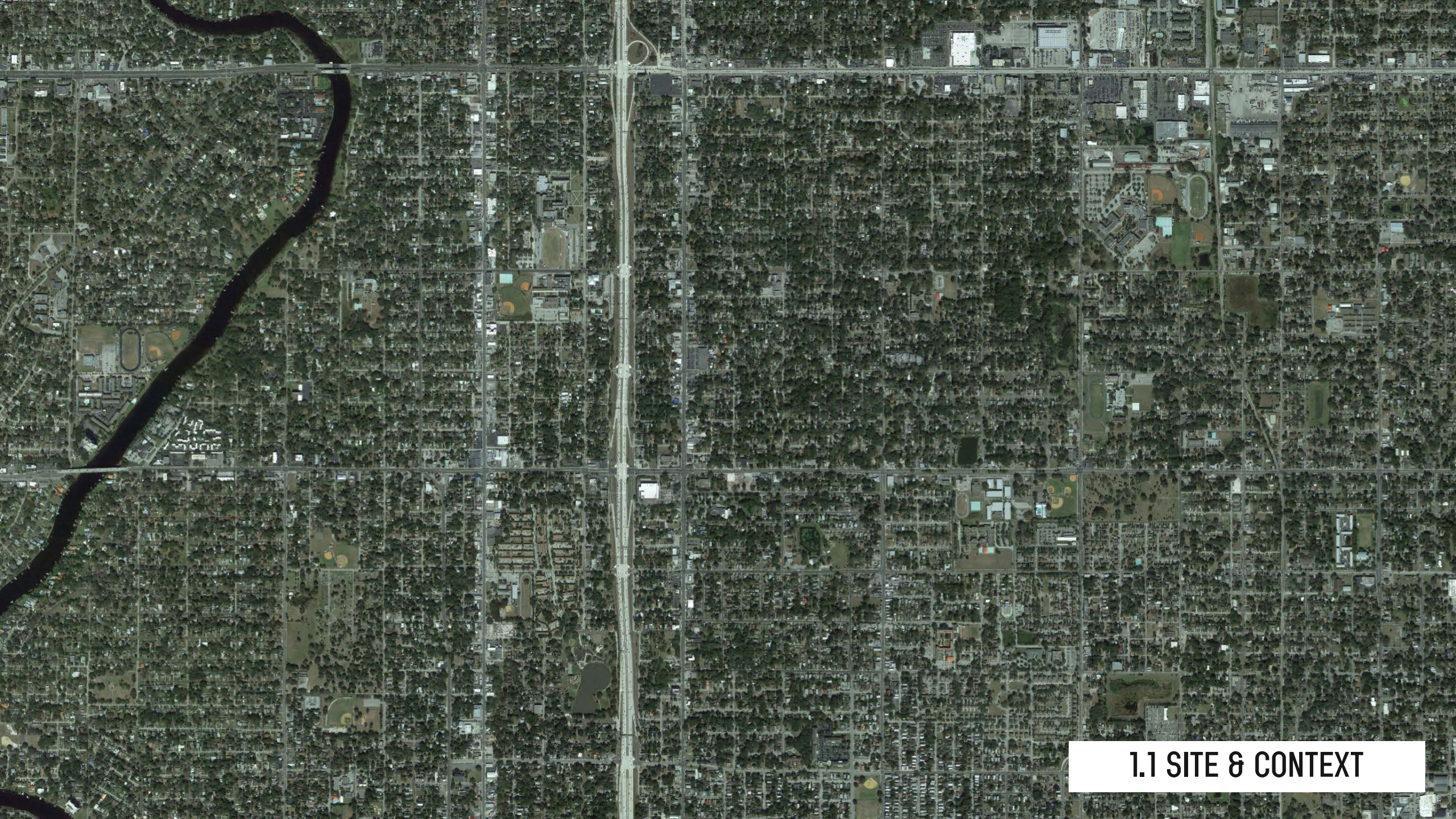


**1.1 SITE & CONTEXT**

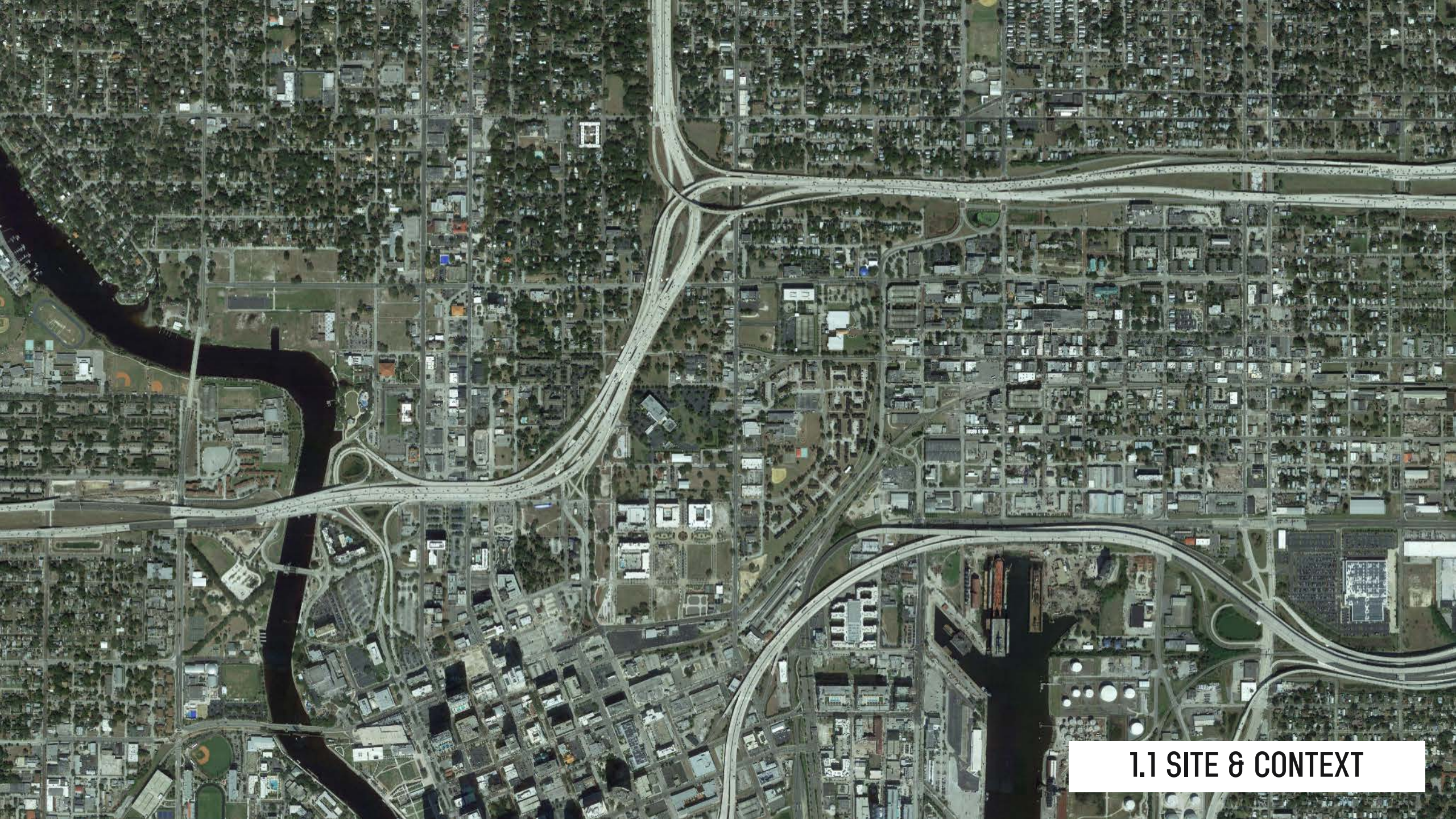


**1.1 SITE & CONTEXT**



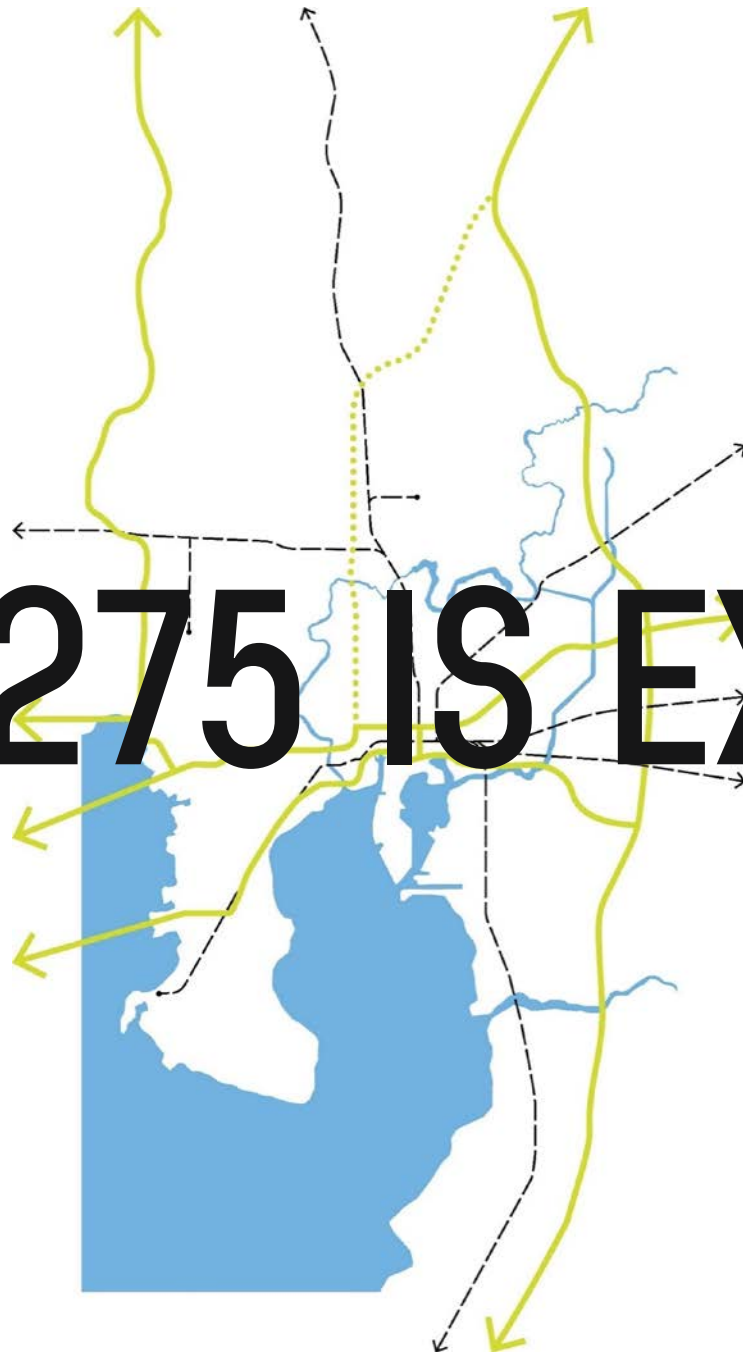


**1.1 SITE & CONTEXT**



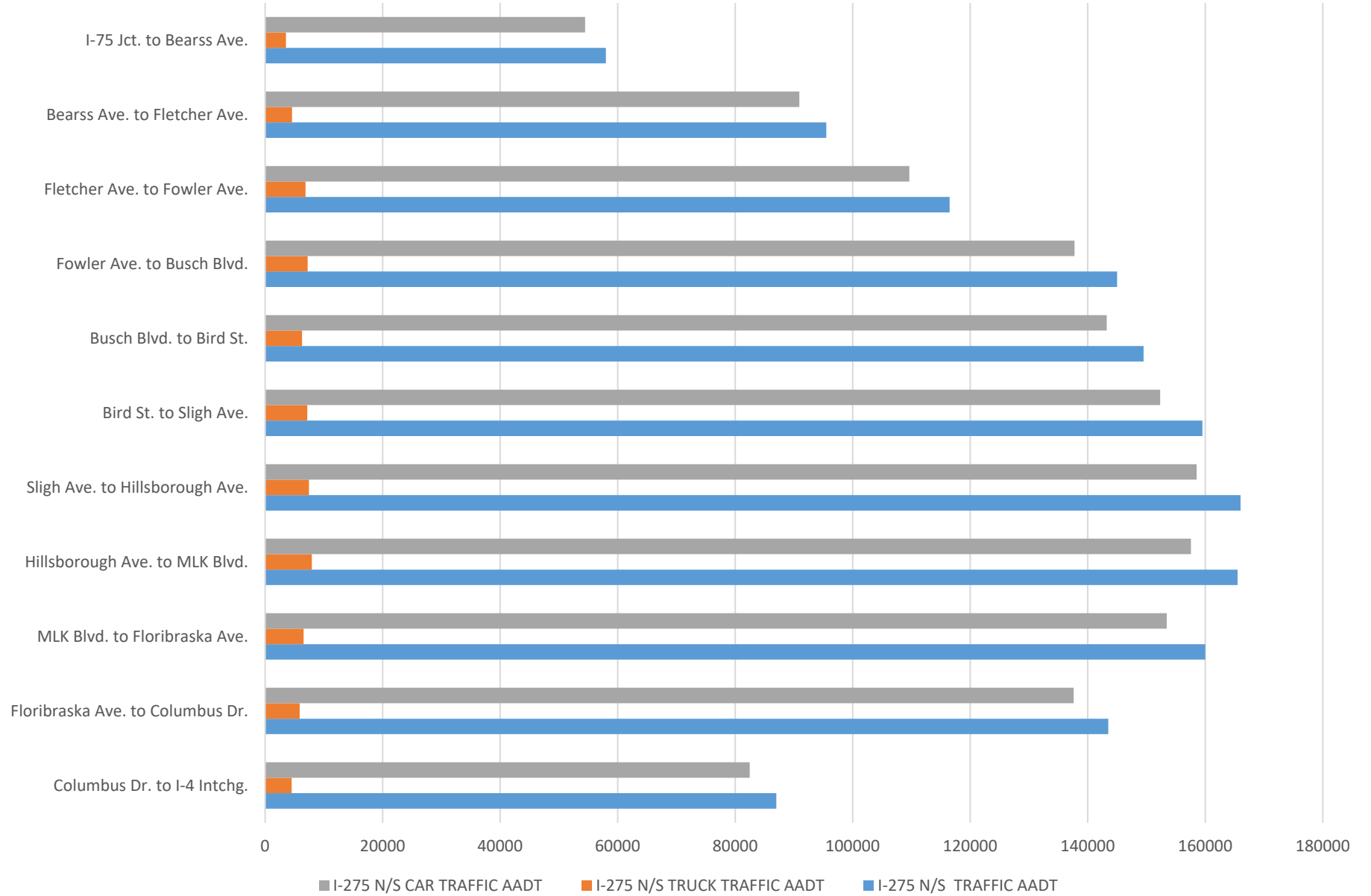
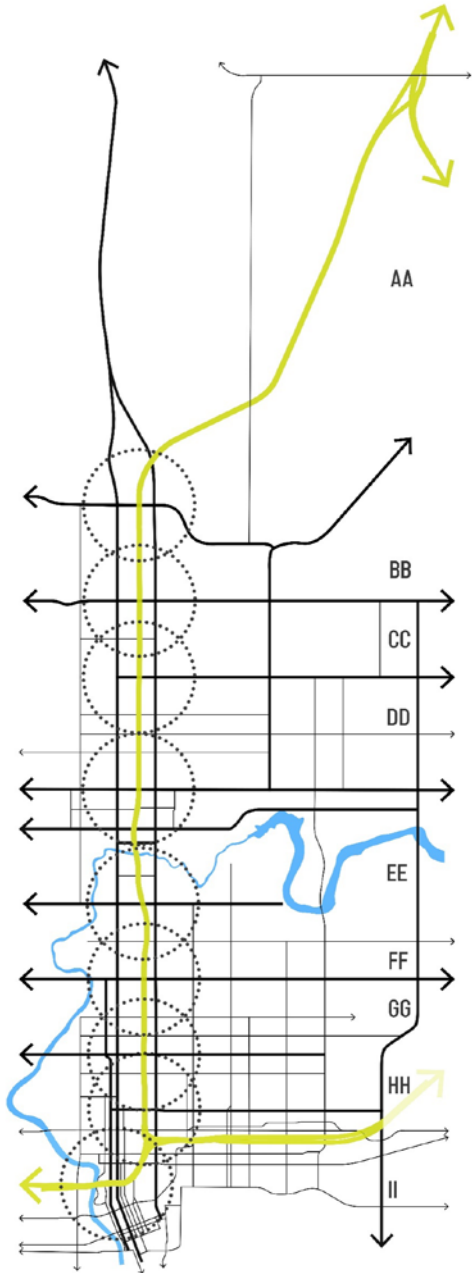
**1.1 SITE & CONTEXT**

**I-275 IS EXPENDABLE**

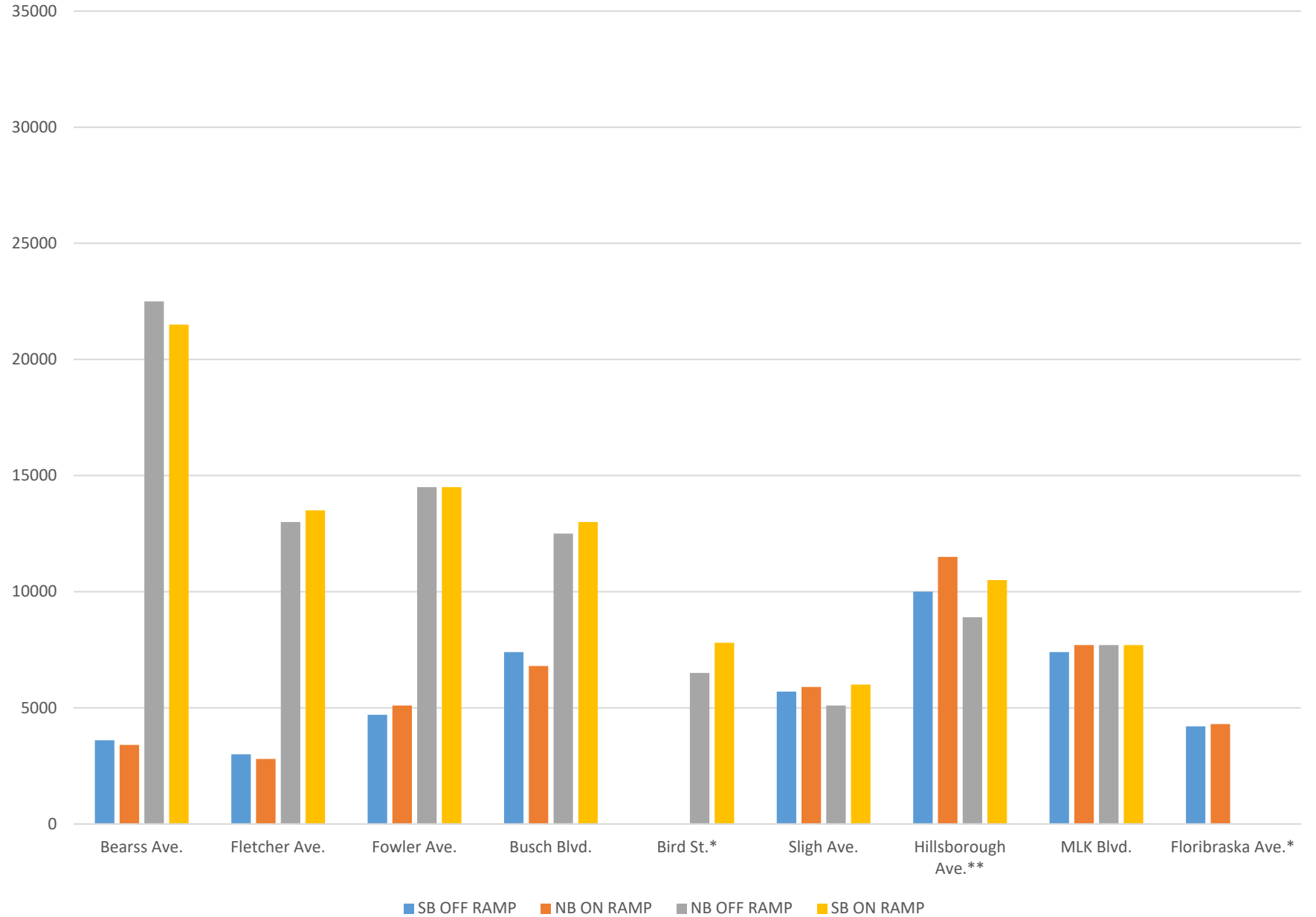
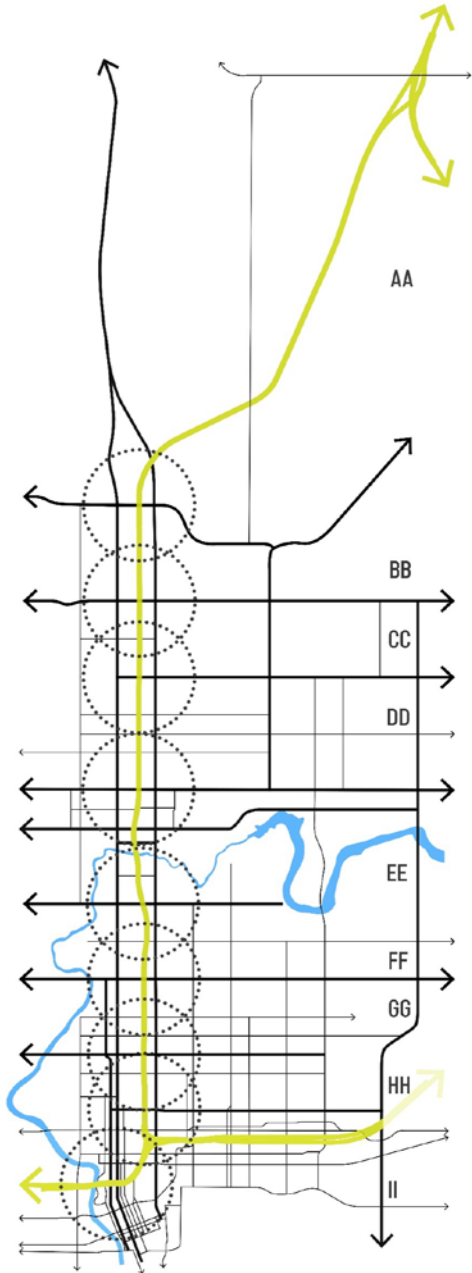


**I-275 IS NOT REGIONAL**

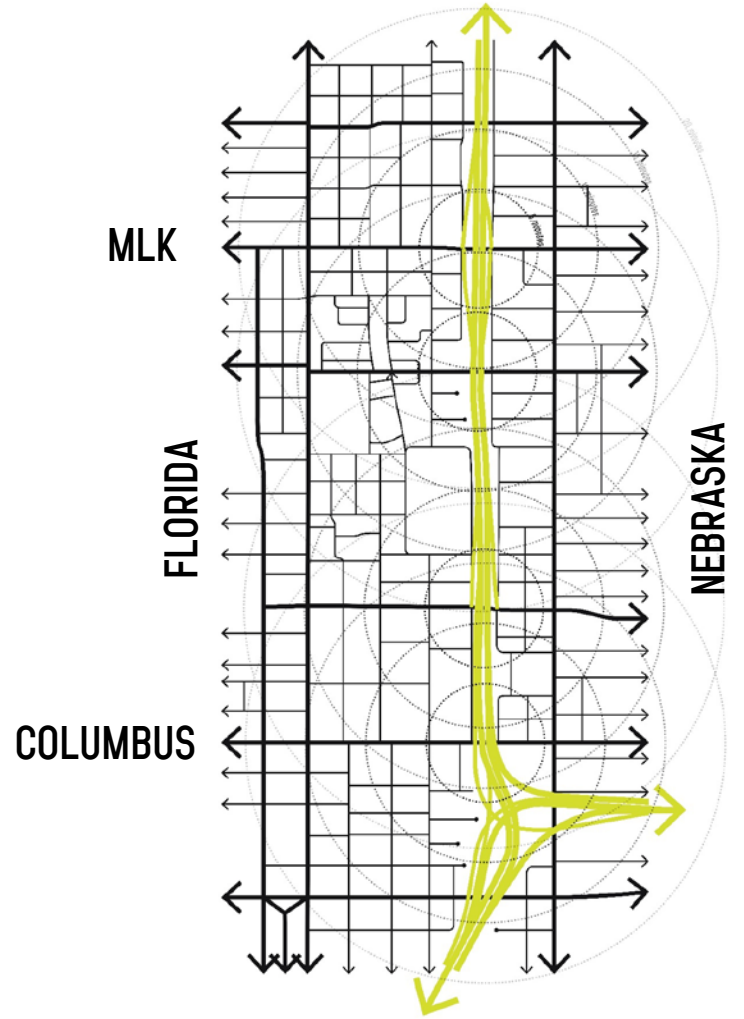
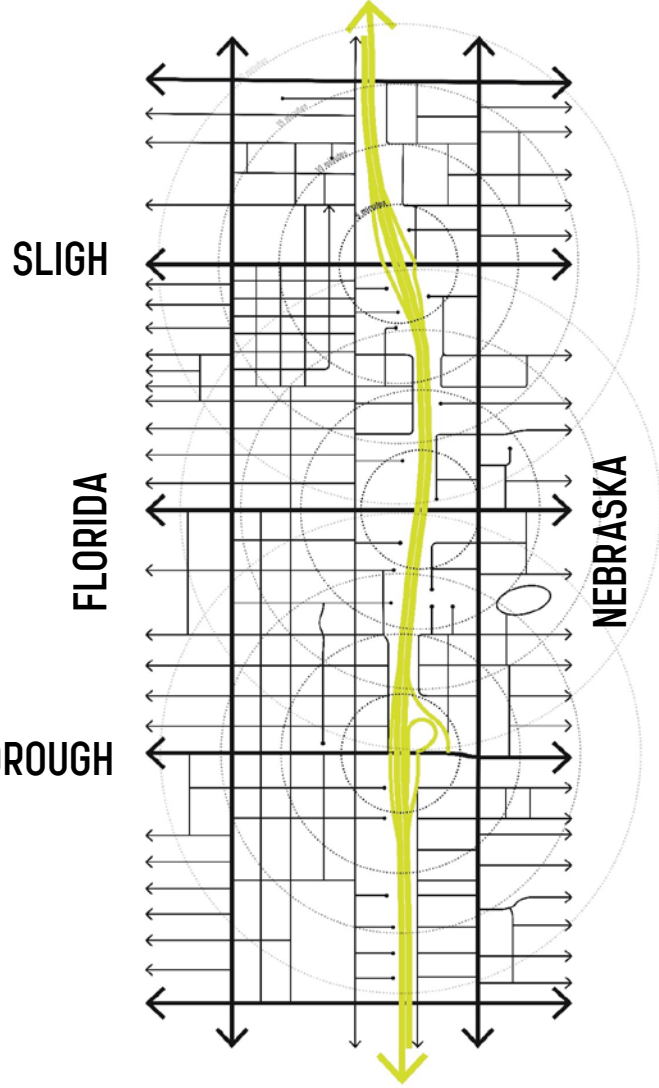
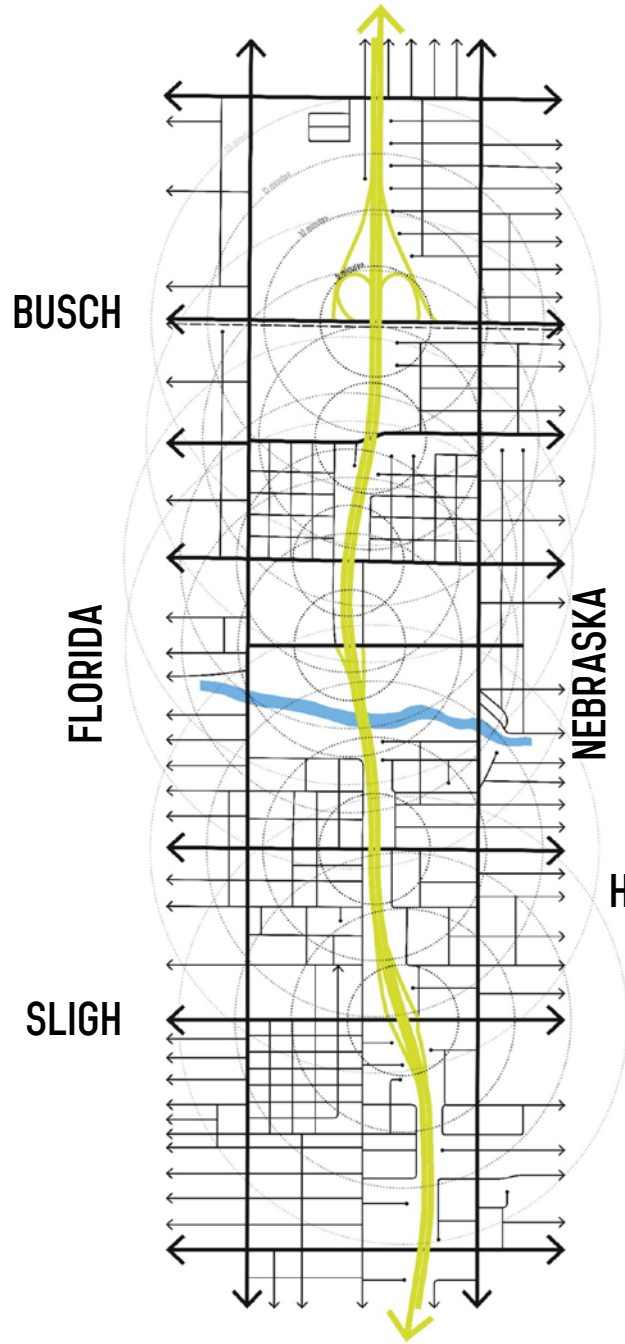
I-275 N/S AADT



I-275 N/S AADT BY EXIT ON/OFF RAMP

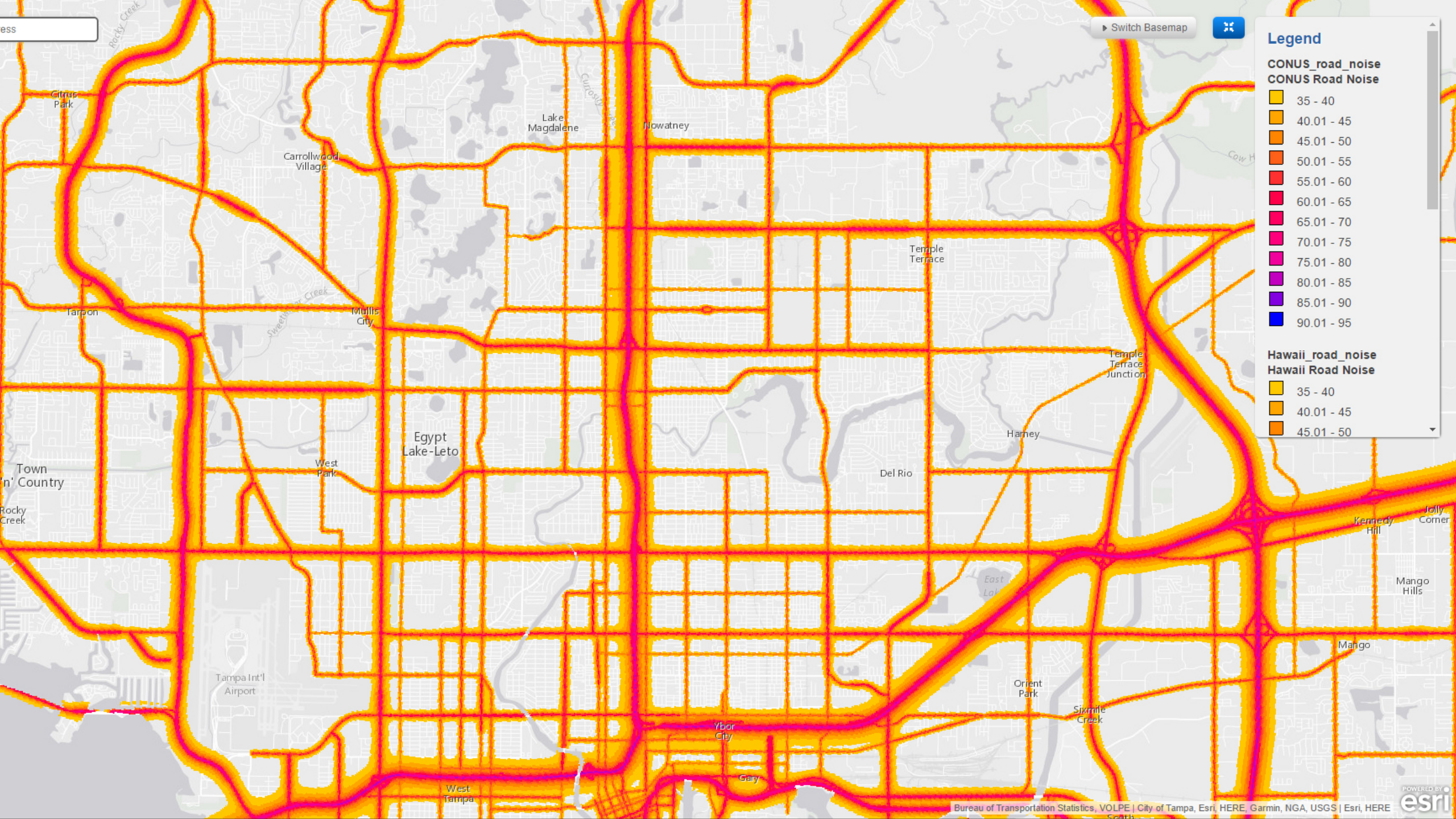


# **I-275 BISECTS COMMUNITIES**





**I-275 LOWERS  
PROPERTY VALUES**



Switch Basemap

### Legend

#### CONUS\_road\_noise CONUS Road Noise

- 35 - 40
- 40.01 - 45
- 45.01 - 50
- 50.01 - 55
- 55.01 - 60
- 60.01 - 65
- 65.01 - 70
- 70.01 - 75
- 75.01 - 80
- 80.01 - 85
- 85.01 - 90
- 90.01 - 95

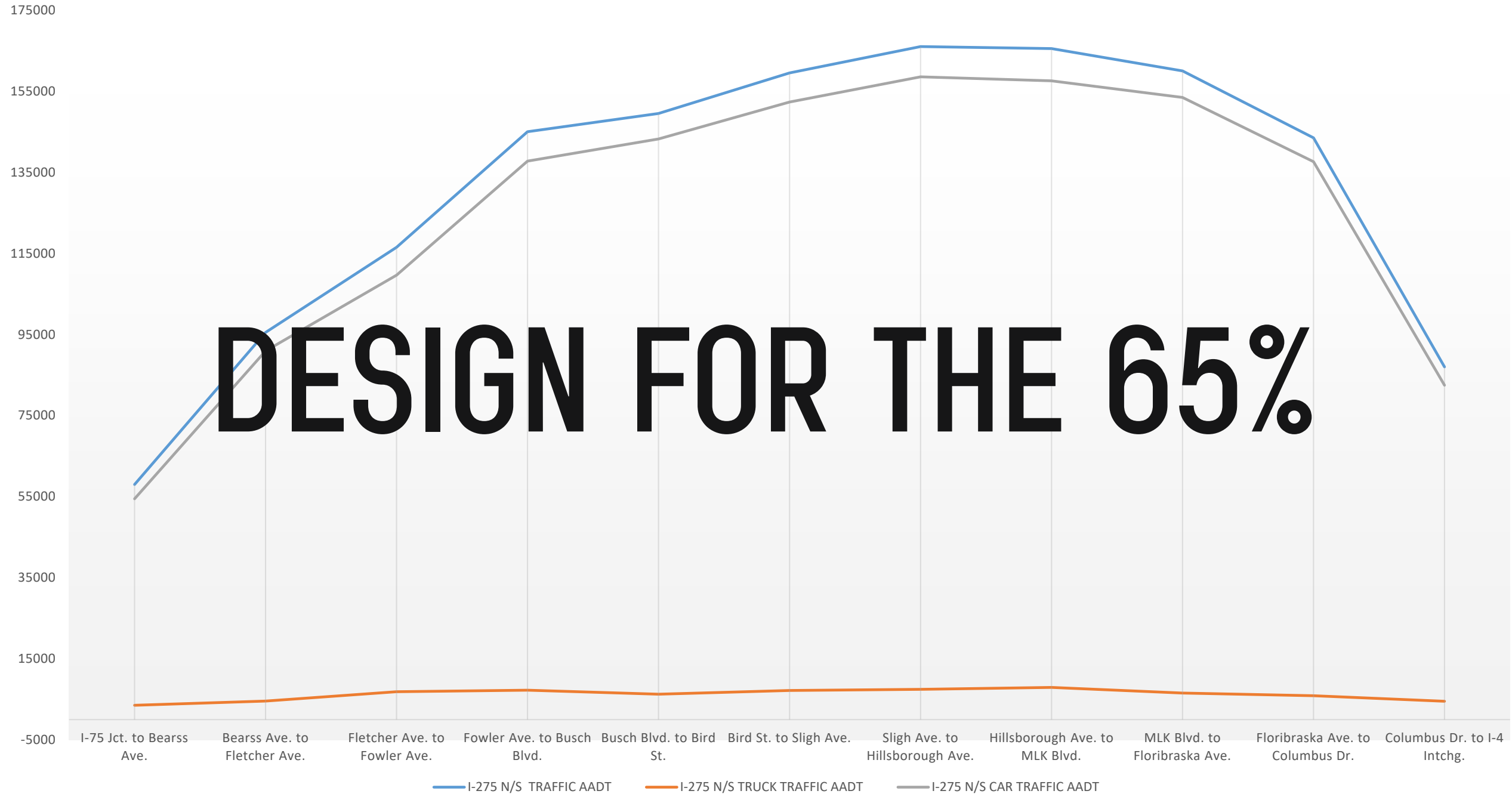
#### Hawaii\_road\_noise Hawaii Road Noise

- 35 - 40
- 40.01 - 45
- 45.01 - 50



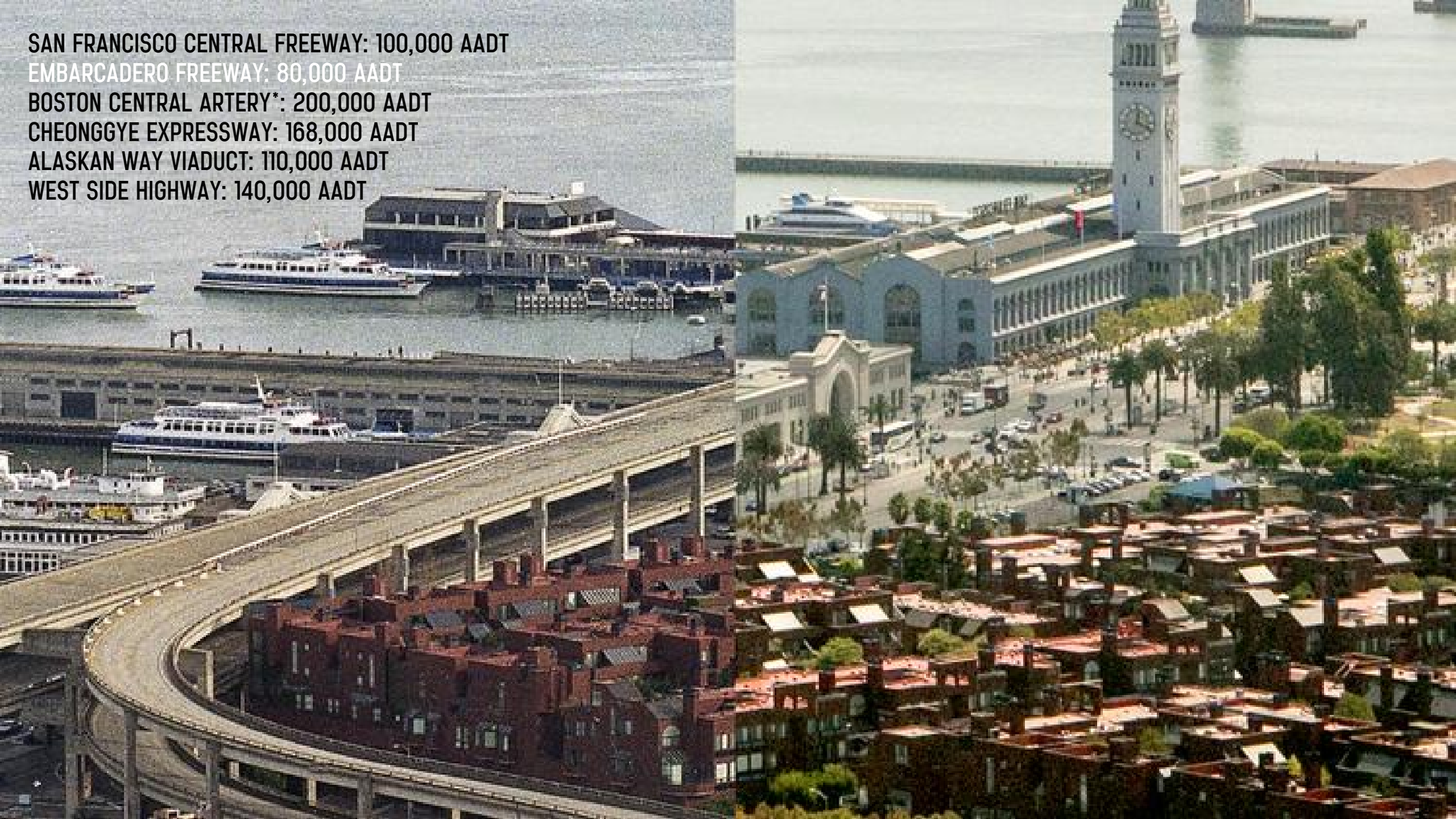
**WHAT IS THE  
ALTERNATIVE?**

# I-275 N/S AADT



# **PART ONE: TEARDOWN**

**SAN FRANCISCO CENTRAL FREEWAY: 100,000 AADT**  
**EMBARCADERO FREEWAY: 80,000 AADT**  
**BOSTON CENTRAL ARTERY\*: 200,000 AADT**  
**CHEONGGYE EXPRESSWAY: 168,000 AADT**  
**ALASKAN WAY VIADUCT: 110,000 AADT**  
**WEST SIDE HIGHWAY: 140,000 AADT**





Washington St

DO NOT ENTER

DO NOT ENTER

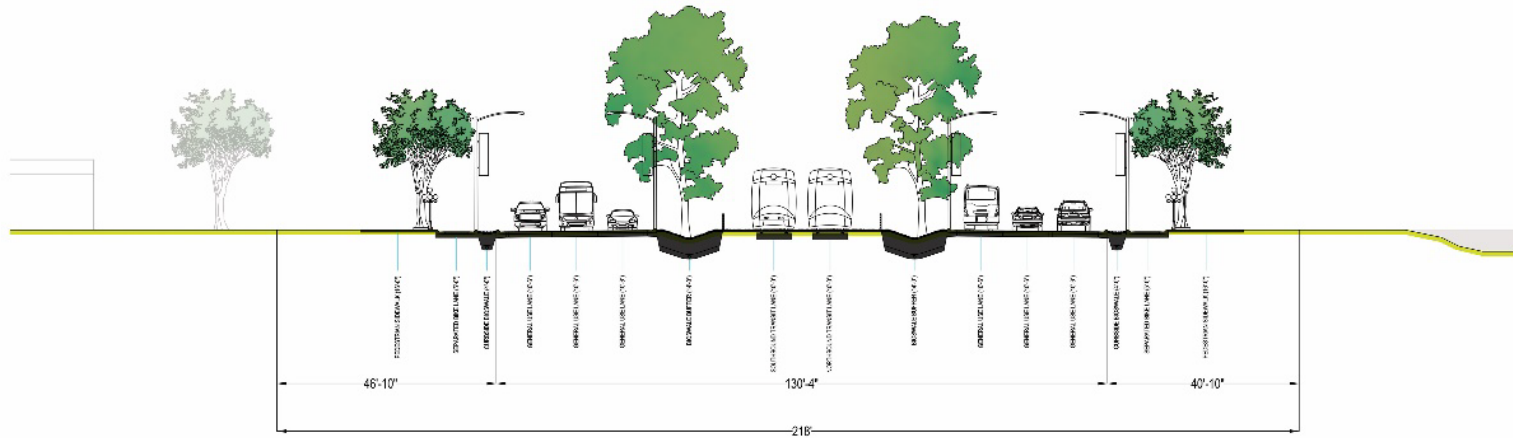


The Embarcadero

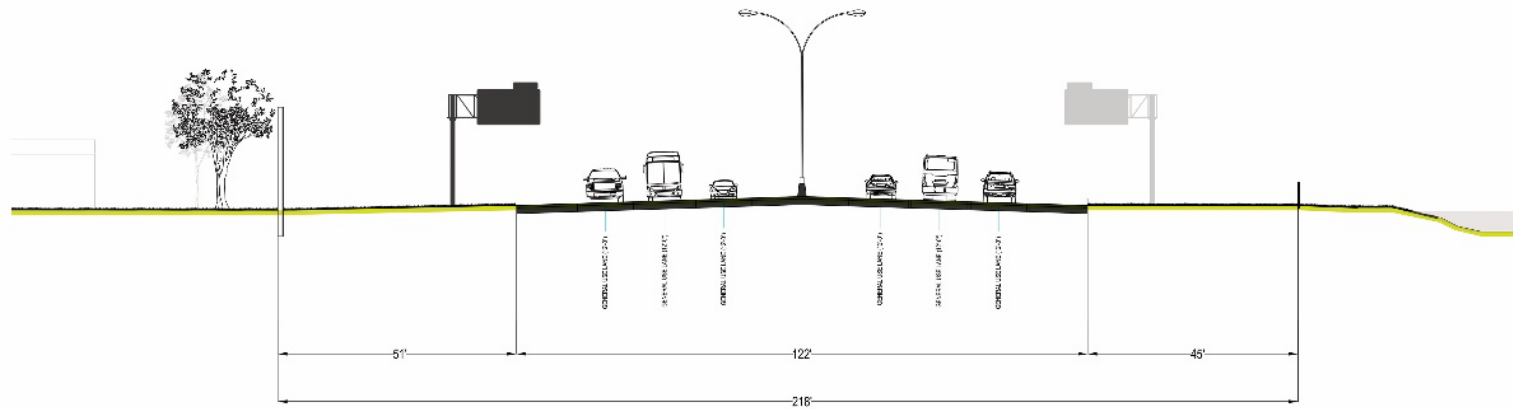


# **PART TWO: REINTEGRATE**

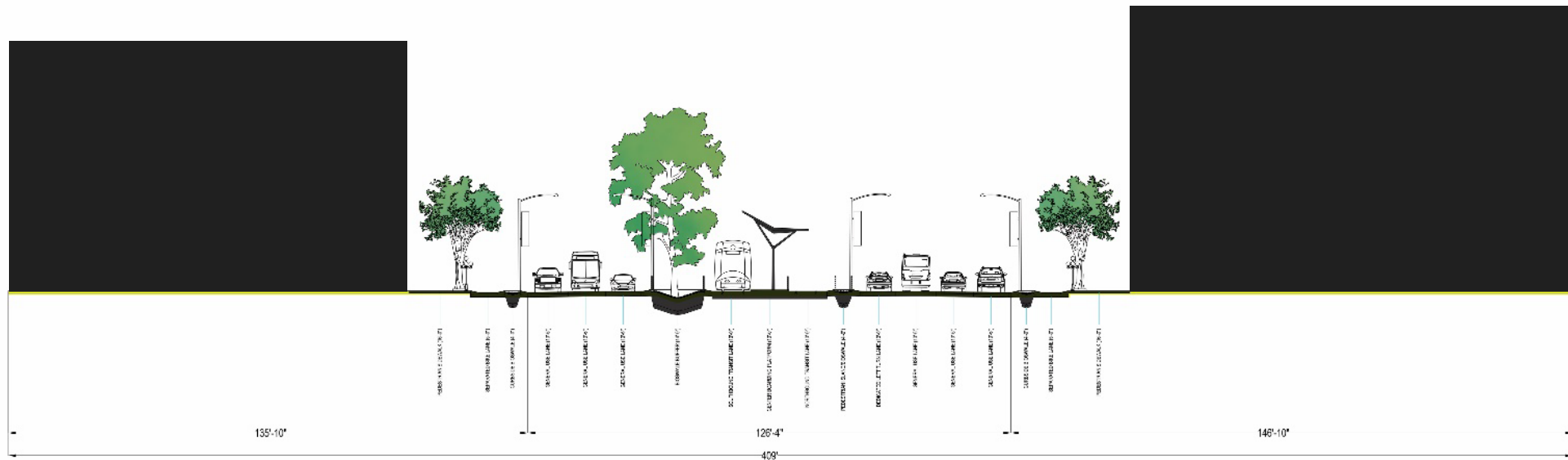




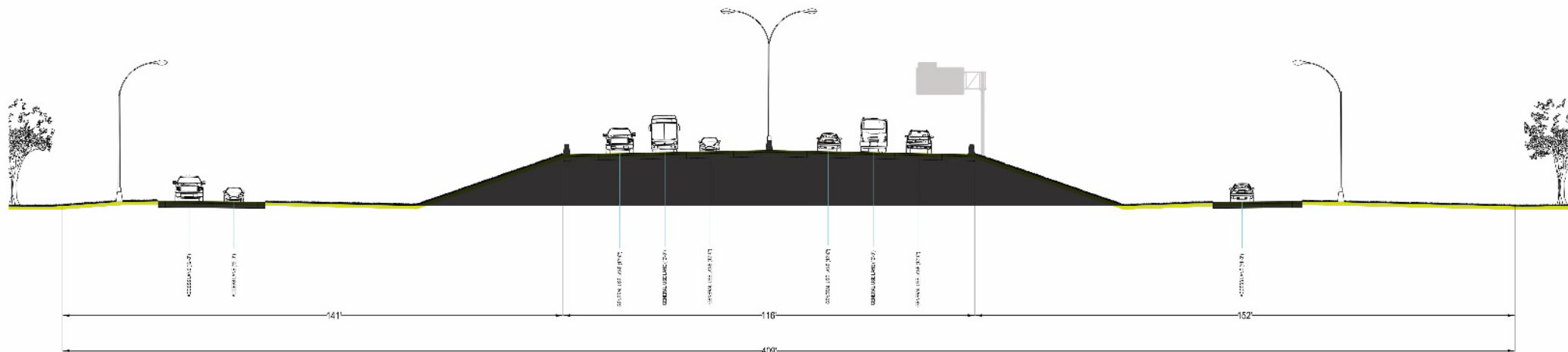
TYPICAL PROPOSED MEDIAN TRANSIT ENVELOPE BOULEVARD 50'-75' ROW TYPOLOGY



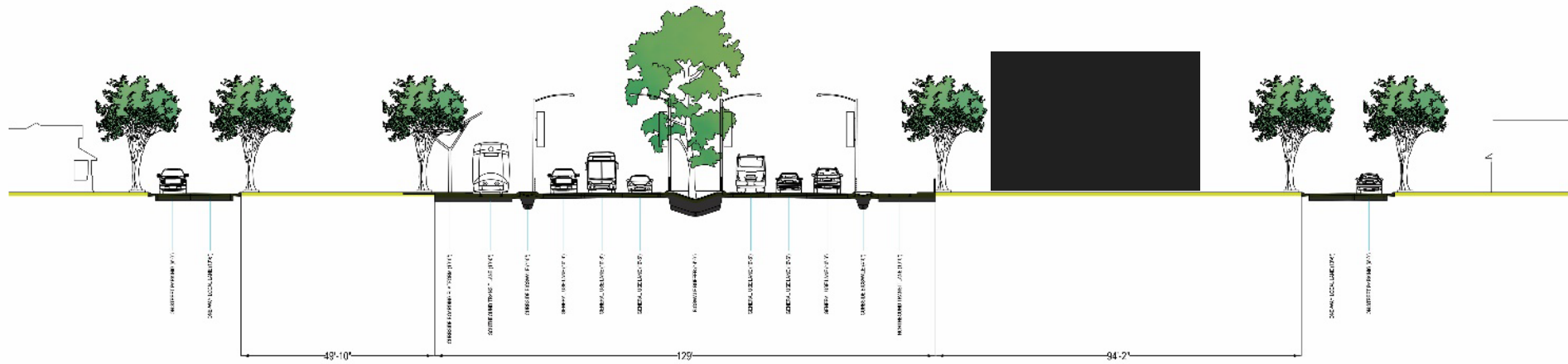
TYPICAL EXISTING INTERSTATE 50'-75' ROW TYPOLOGY



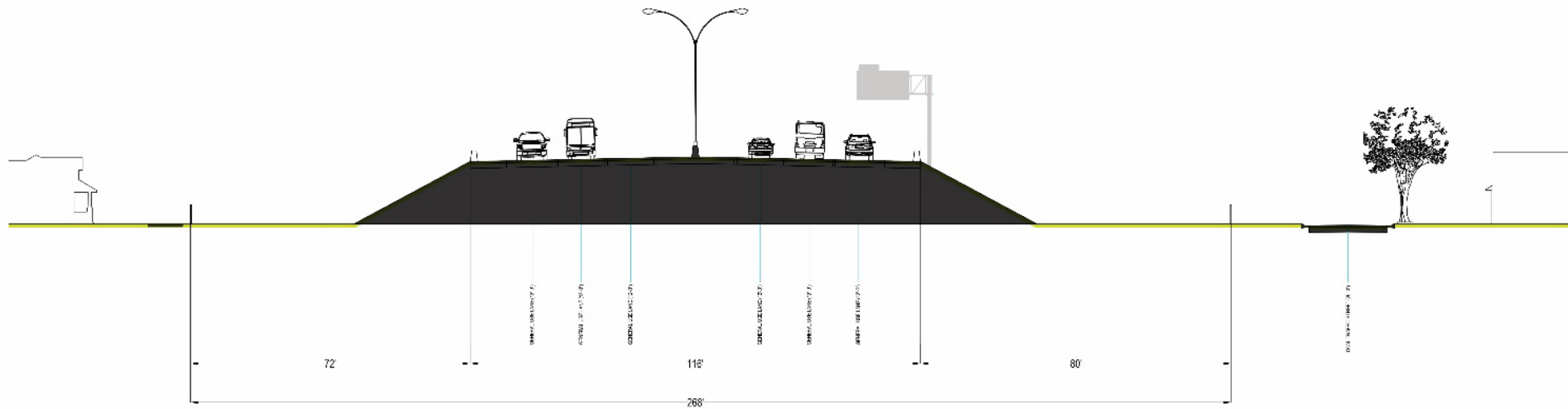
TYPICAL PROPOSED MEDIAN TRANSIT ENVELOPE (SOUTHBOUND STATION) 75'-150' ROW TYPOLOGY



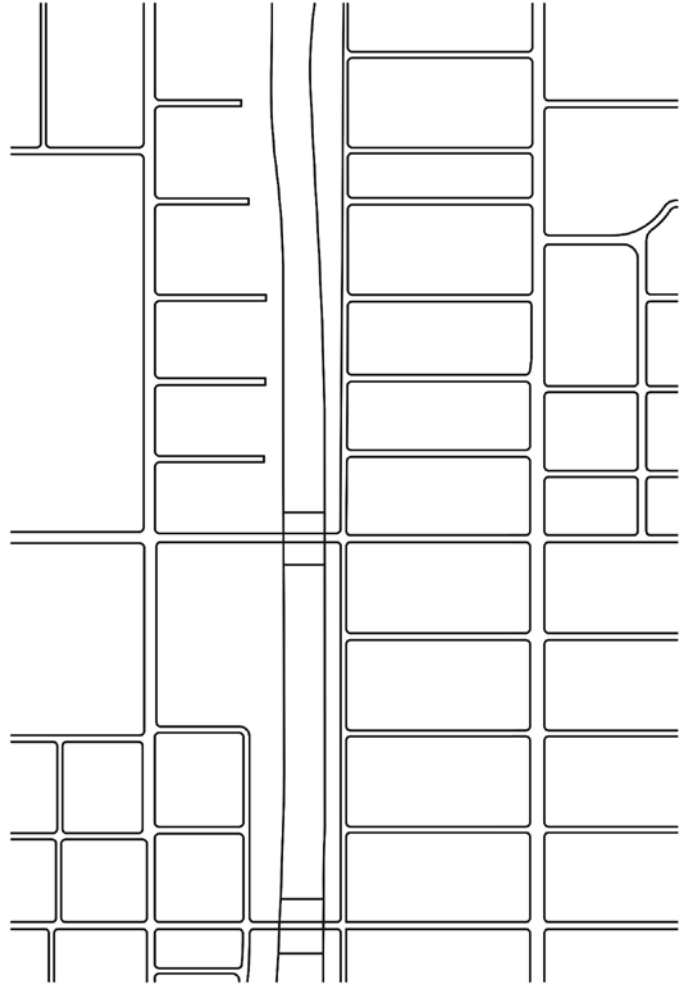
TYPICAL EXISTING INTERSTATE 75'-150' ROW TYPOLOGY



TYPICAL PROPOSED CURBSIDE TRANSIT ENVELOPE (SOUTHBOUND STATION)



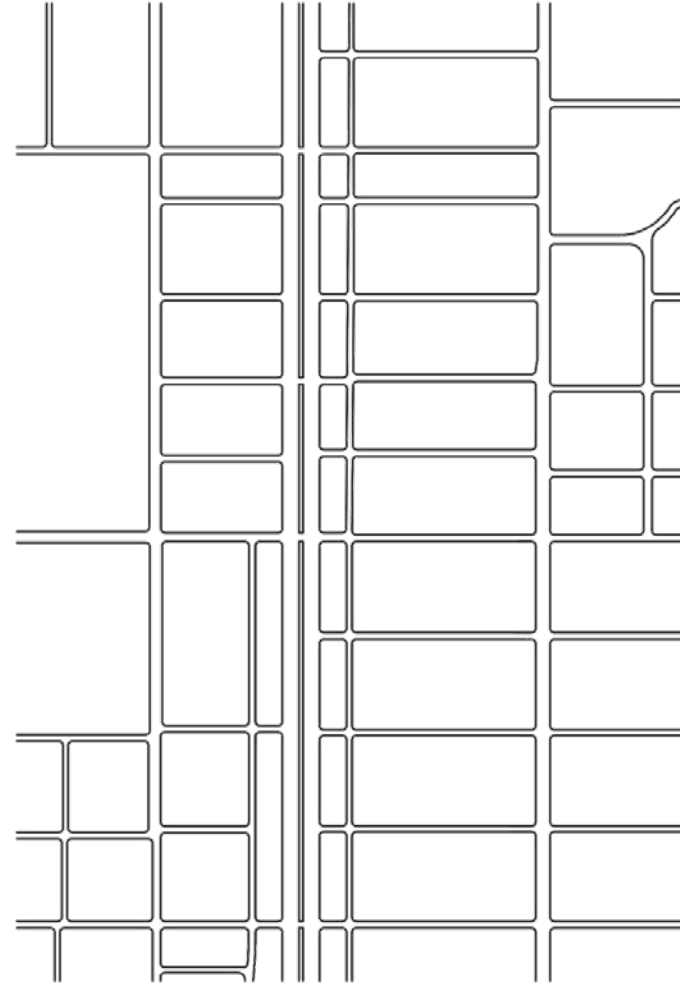
TYPICAL EXISTING INTERSTATE



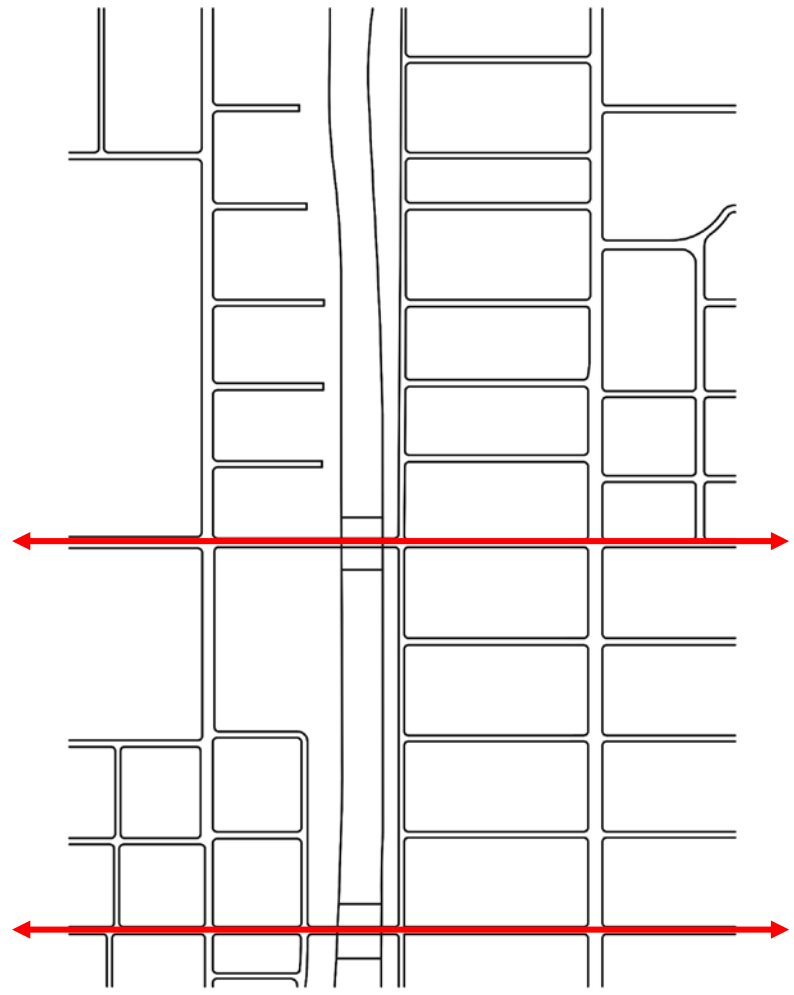
**CURRENT**

**OSBORNE**

**CHELSEA**

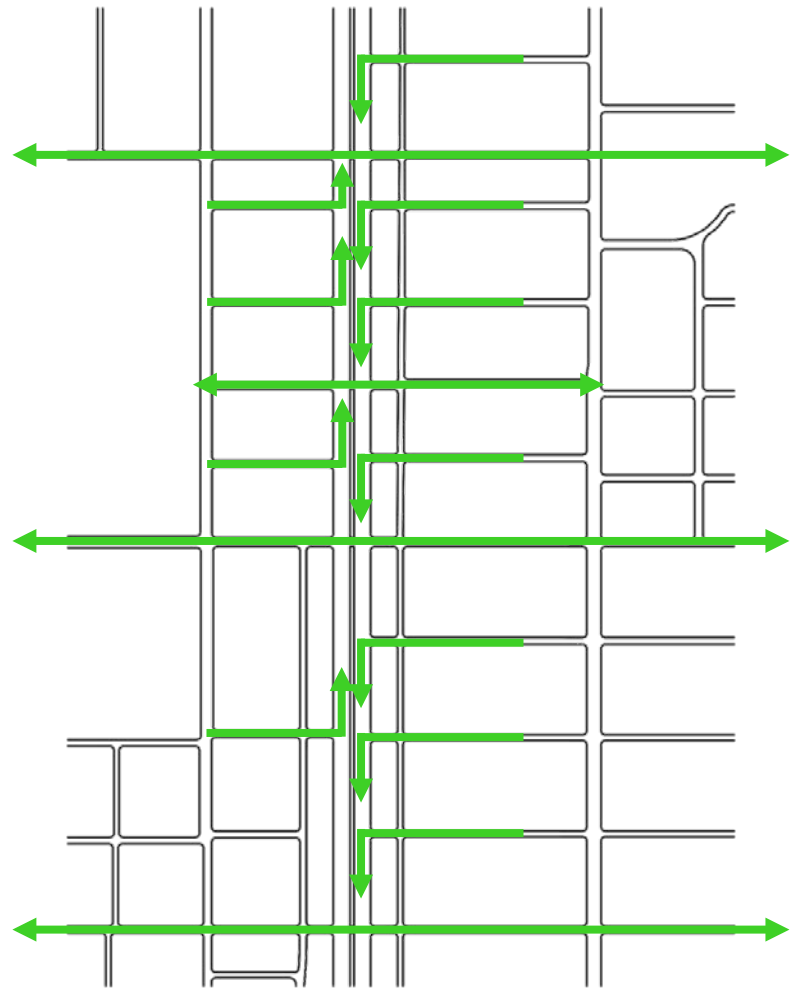


**PROPOSED**



CURRENT

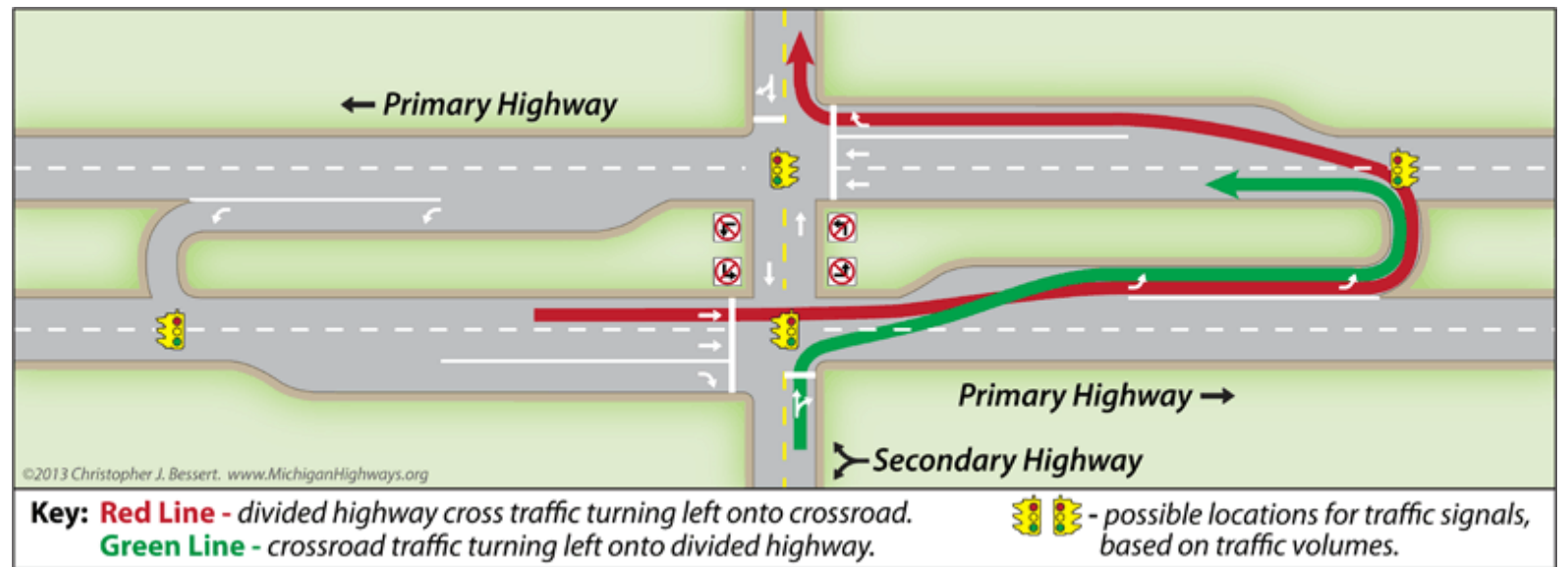
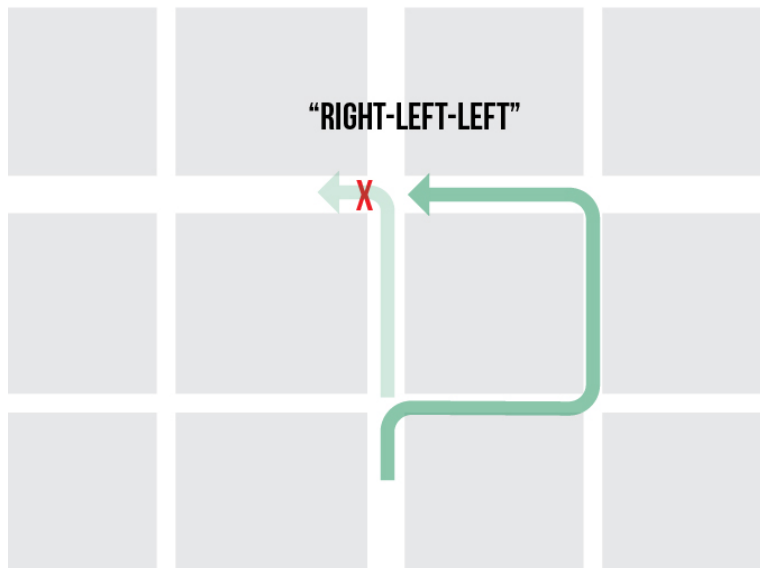
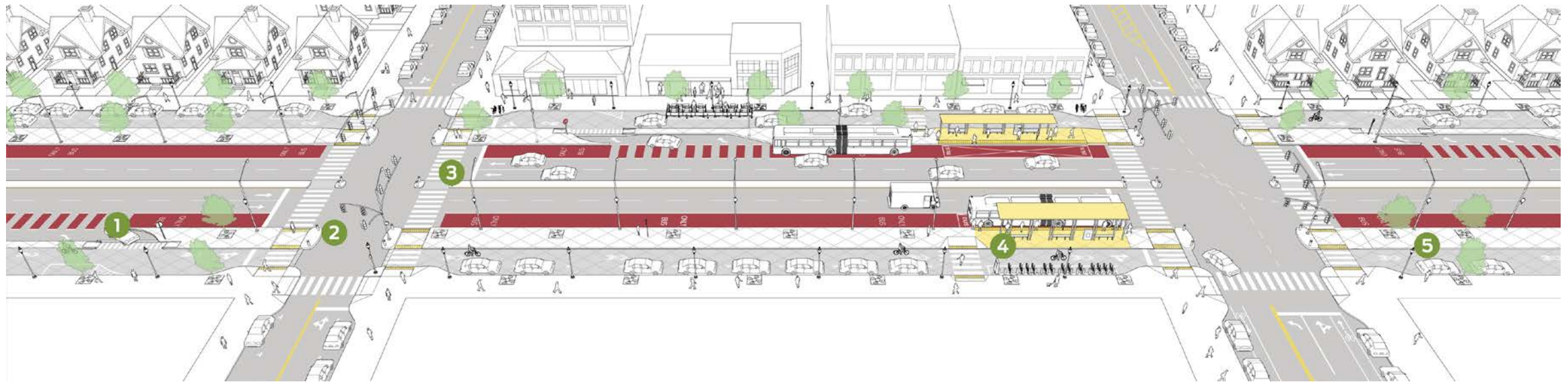
WILDER  
NEW ORLEANS  
OSBORNE  
CHELSEA



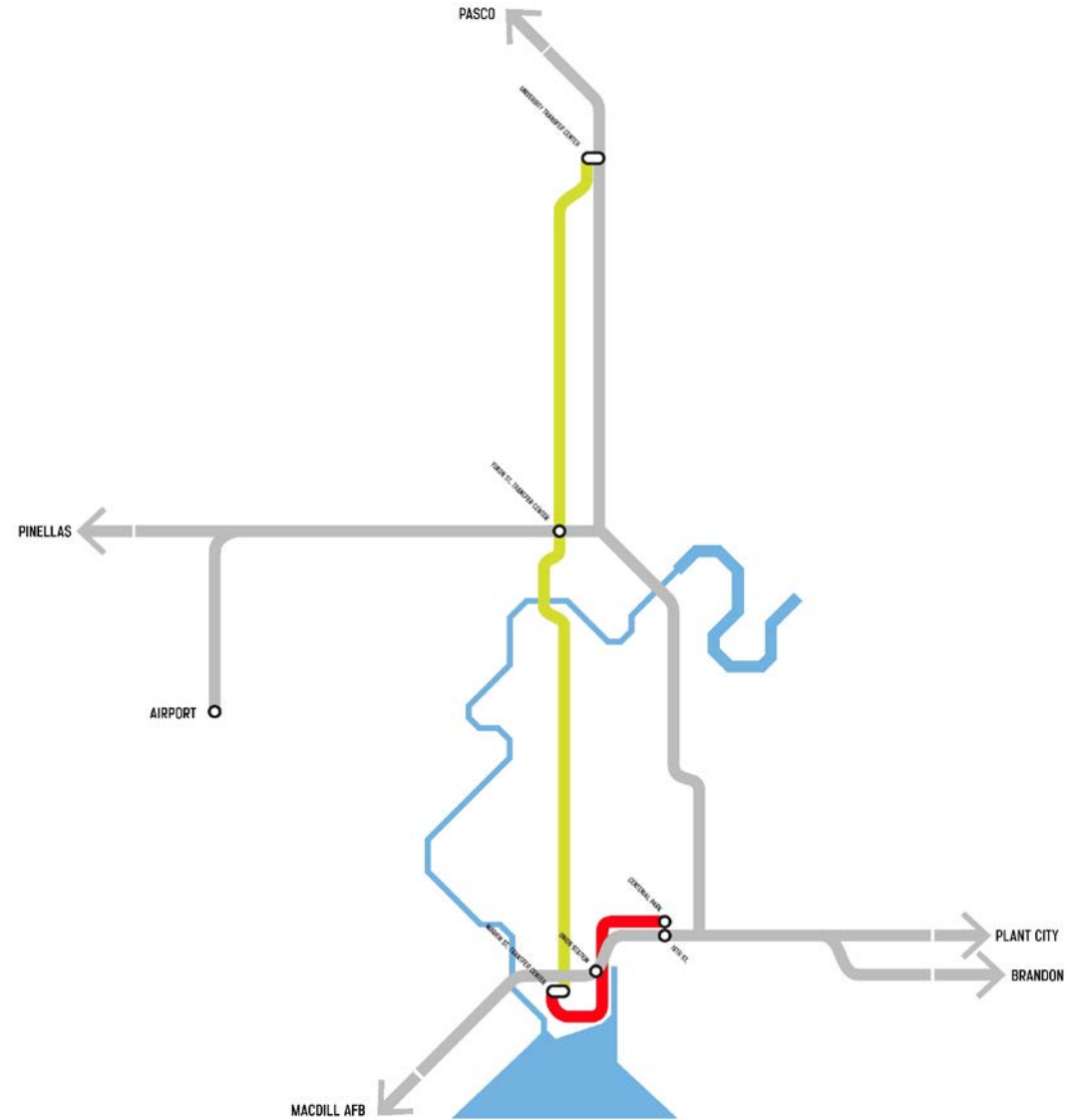
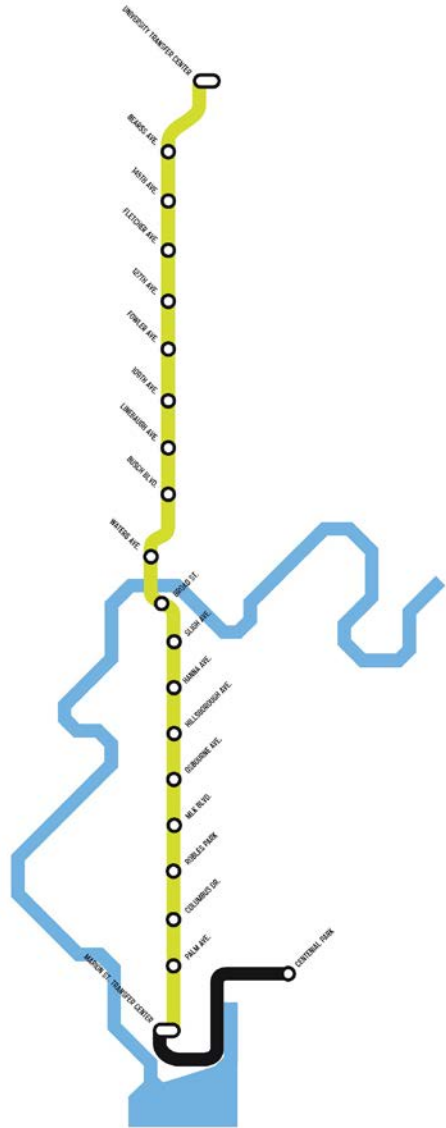
PROPOSED



**PROPOSED SIDE STREETS**



# A COMPREHENSIVE SOLUTION





# BOULEVARD VEHICULAR TRAFFIC

An aerial photograph of a wide, busy Parisian boulevard, likely the Champs-Élysées, showing heavy vehicular traffic and pedestrians. The street is lined with tall, ornate buildings and lush green trees. The traffic is dense, with cars, buses, and a double-decker bus visible. Pedestrians are walking on the sidewalks. The background shows the city skyline of Paris.

## BOULEVARD COMPARABLES:

**CHAMPS ELYSEES: 84,000 AADT**

**DALE MABRY HIGHWAY: 69,500 AADT**

**E FOWLER AVE: 67,300 AADT**

**US RT. 1 ALEXANDRIA: 52,000 AADT**

**FLETCHER AVE: 44,766 AADT**

**MICHIGAN AVE. CHICAGO: 42,000 AADT**

# REGIONAL COMMUTER RAIL



COMMUTER RAIL COMPARABLES:

CALTRAIN SAN FRANCISCO: 56,900 AWR

METROLINK LOS ANGELES: 40,500 AWR

**MARC TRAIN BALTIMORE/DC: 33,800 AWR**

TRI-RAIL MIAMI: 14,200 AWR

# LIGHT RAIL/MODERN STREETCAR



## LIGHT RAIL COMPARABLES:

MUNI METRO SAN FRANCISCO: 156,000 ADR

SAN DIEGO TROLLEY: 123,300 ADR

MINNEAPOLIS METRO: 71,400 ADR

**METRORAIL HOUSTON: 60,600 ADR**

CHARLOTTE BLUE LINE: 16,700 ADR

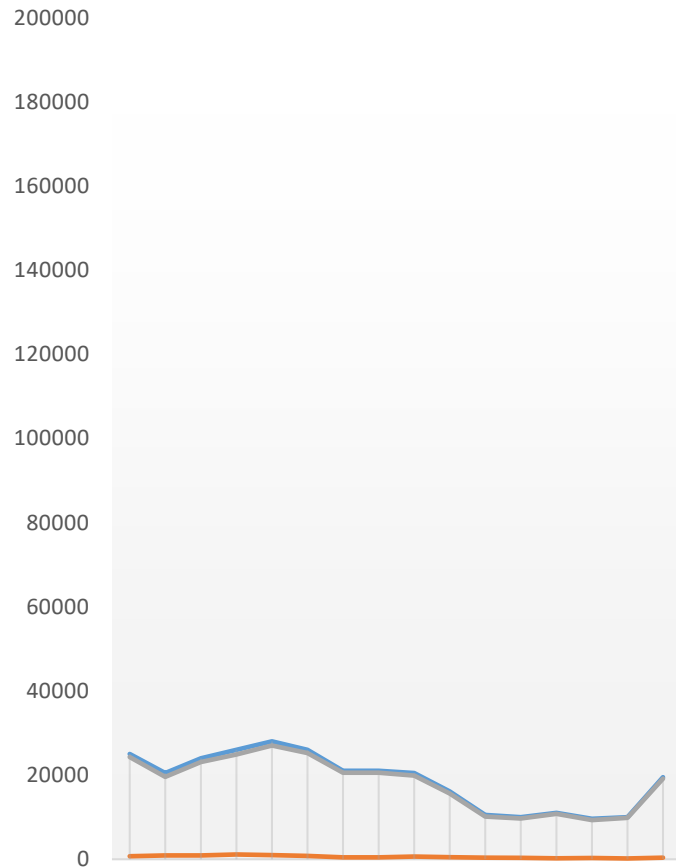
TECO LINE STREETCAR: 600 ADR

# MAXIMIZE EXISTING INTERSTATES



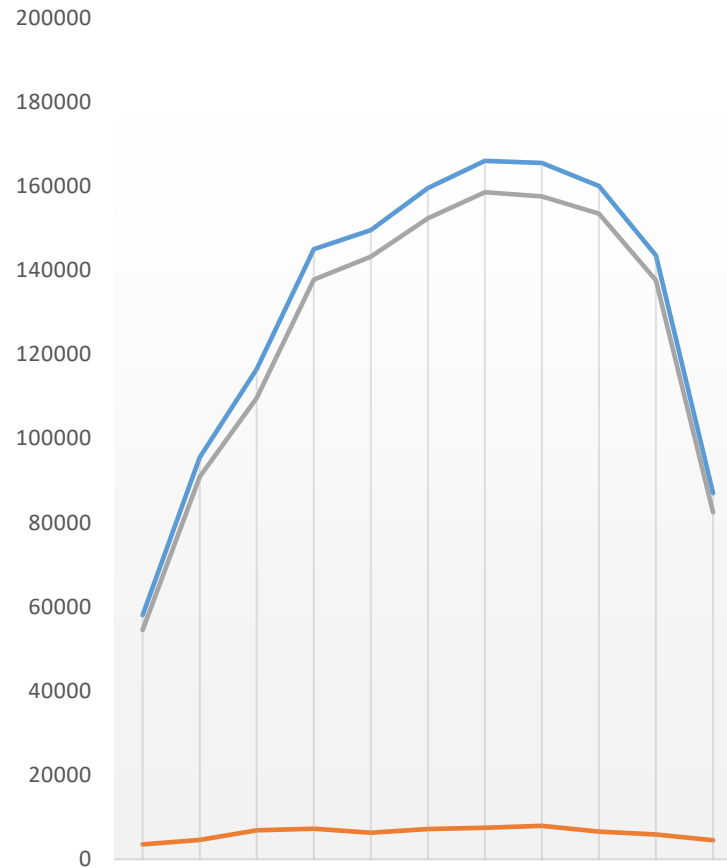
# **PART THREE: SMART GROWTH**

FLORIDA AVE. N/S AADT



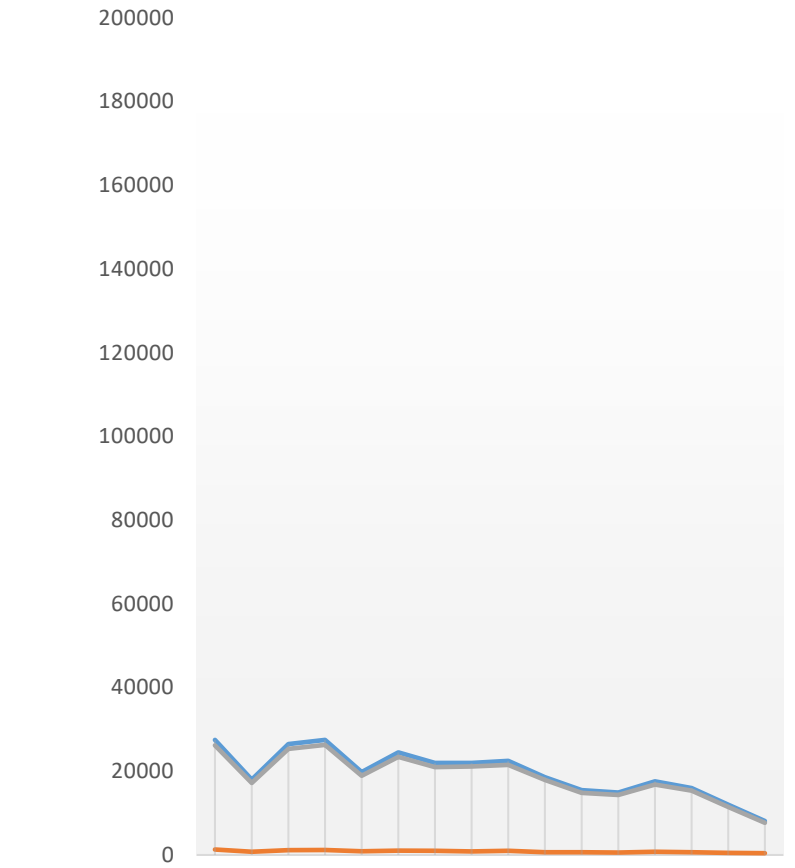
— FLORIDA AVE. TRAFFIC AADT  
 — FLORIDA AVE. TRUCK AADT  
 — FLORIDA AVE. CAR TRAFFIC AADT

I-275 N/S AADT



— I-275 N/S TRAFFIC AADT  
 — I-275 N/S TRUCK TRAFFIC AADT  
 — I-275 N/S CAR TRAFFIC AADT

NEBRASKA AVE. N/S AADT



— NEBRASKA AVE. N/S TRAFFIC AADT  
 — NEBRASKA AVE. N/S TRUCK AADT  
 — NEBRASKA AVE. N/S CAR TRAFFIC AADT



# URBAN TREE CANOPY

**Details** >

**Eco Benefits** >

- Total annual benefits  
**\$2,174,562 saved**

**TREE BENEFITS**

- Energy conserved  
1,317,399 kwh/year saved **\$428,470**
- Stormwater filtered  
12,500,766 gal/year saved **\$1,228,657**
- Air quality improved  
-6,420 lbs/year saved **\$90,182**
- Carbon dioxide removed  
10,681,288 lbs/year saved **\$427,251**
- Carbon dioxide stored to date  
73,515,829 lbs saved **\$2,940,633**

*Based on 12,908 out of 15,405 total trees.*

Leaflet

# STORMWATER MANAGEMENT

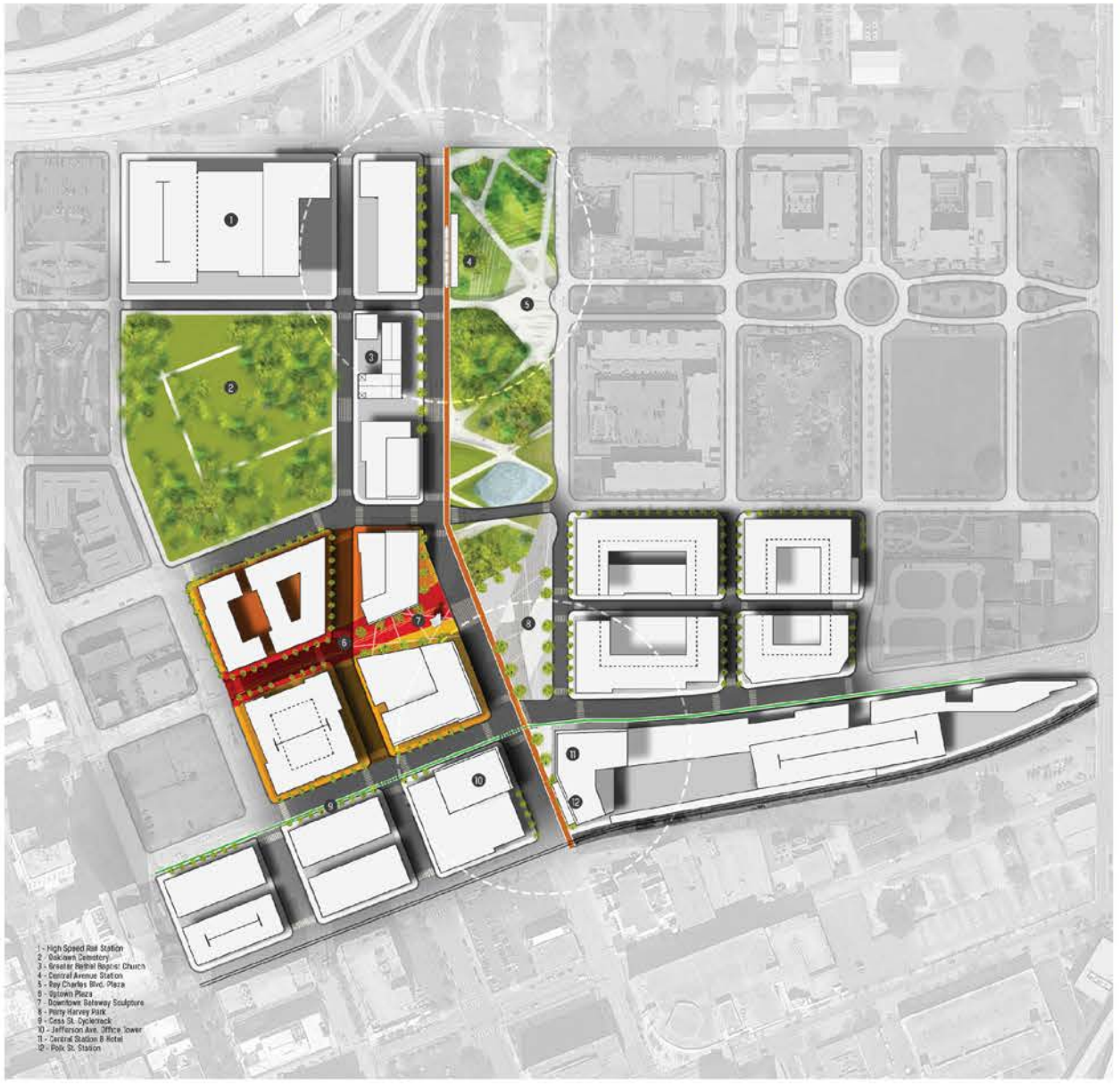
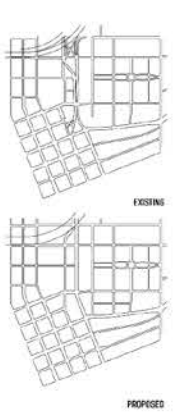
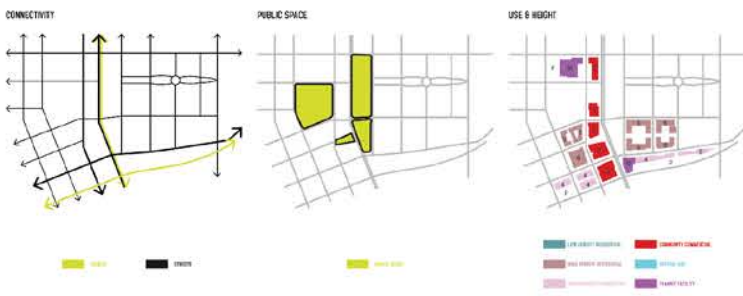




# UTILITIES AND OTHER INFRASTRUCTURE

# ECONOMIC DEVELOPMENT





- 1 - High Speed Rail Station
- 2 - Backswan Detestory
- 3 - Greater Baptist Temple Church
- 4 - Central Avenue Station
- 5 - Ray Charles Blvd. Plaza
- 6 - Wynnton Plaza
- 7 - Downtown Railway Sculpture
- 8 - Perry Harvey Plaza
- 9 - Cass St. Cyclenack
- 10 - Jefferson Ave. Office Tower
- 11 - Central Station @ Hotel
- 12 - Polk St. Station

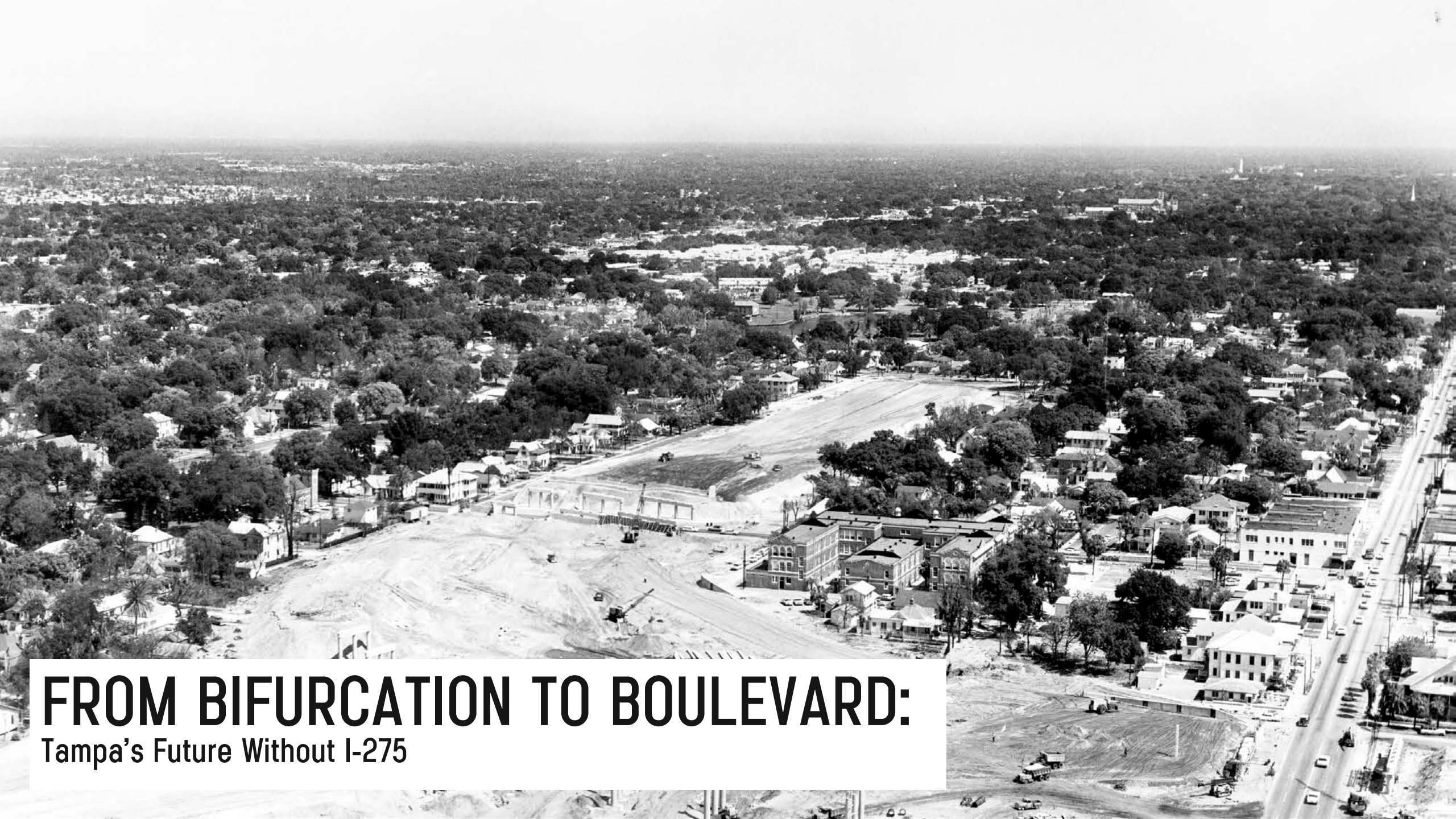
# 4 DOWNTOWN TAMPA CENTRAL STATION



JEFFERSON ST. FACING SOUTH



UPTOWN PLAZA



# FROM BIFURCATION TO BOULEVARD:

Tampa's Future Without I-275