



Plan
Hillsborough

Hillsborough County Health Atlas

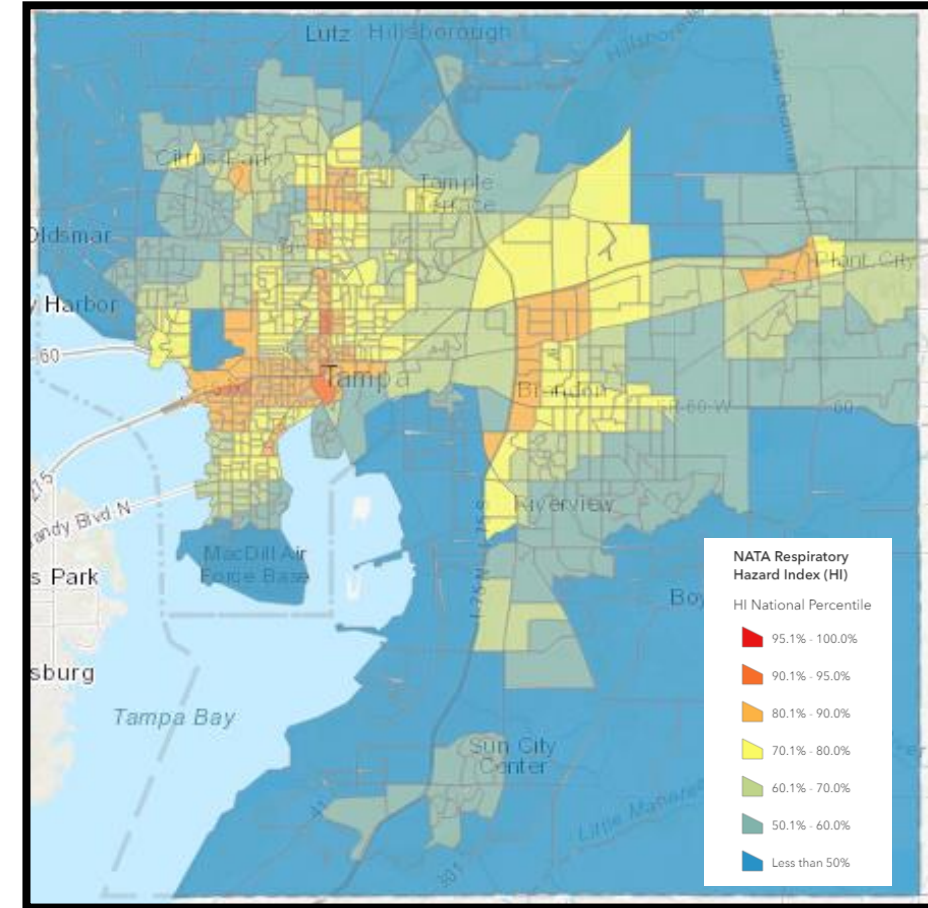
Brandon Berry
MPO Staff



planhillsborough.org

Purpose of the Health Atlas

- **Web-based mapping tool to:**
 - Provide a baseline context of health and health-related indicators within Hillsborough County
 - Visualize the interconnectedness of health, transportation, economic development, and the environment



Catalyst

Healthiest Cities & Counties Challenge: Garden Steps

- Establish community gardens in food deserts within Tampa
- Evaluate transportation conditions surrounding sites



Health in All Policies

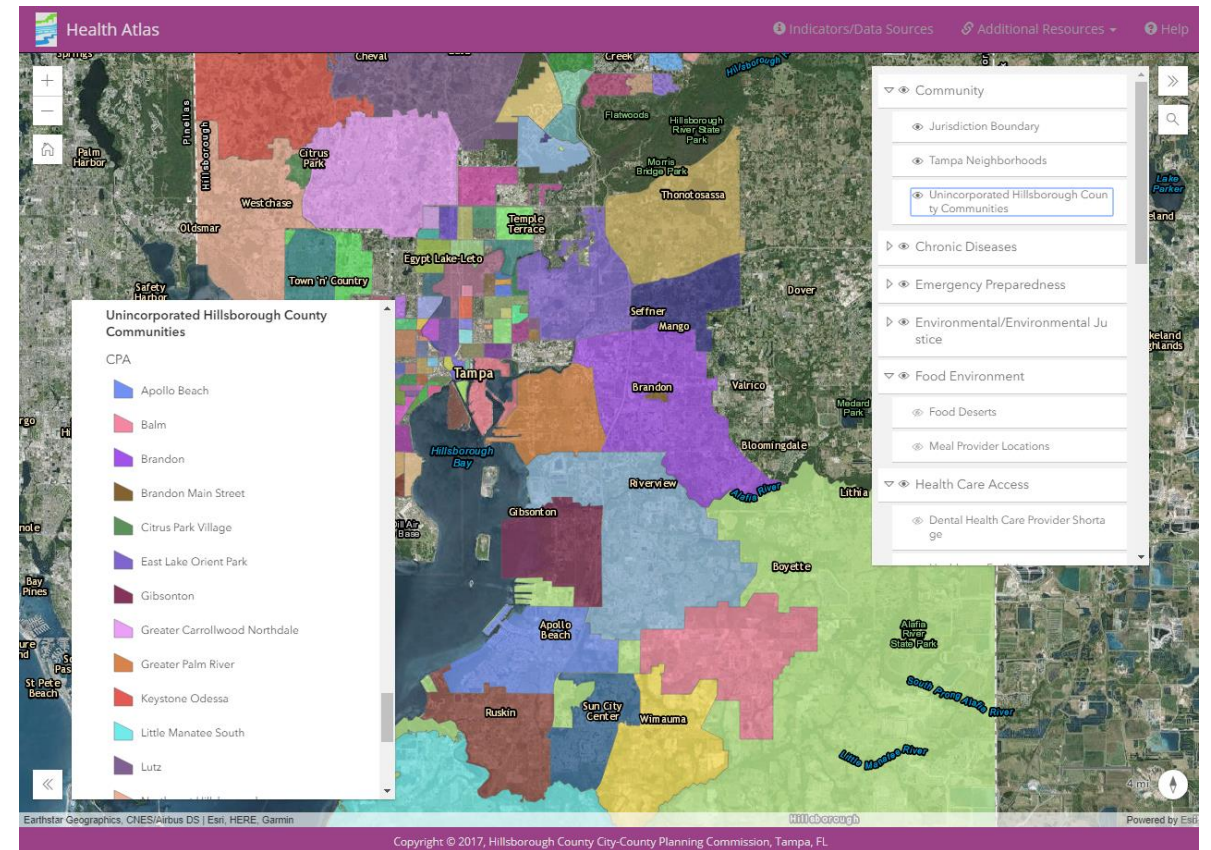
- How do we integrate health into decision-making?
- Approach to promote **health, wellness, equity** and **sustainability**
- Determine health disparities, pursue health equity



Layers

60+ layers, including:

- **Health**
 - Chronic Disease (Tampa)
 - Healthcare Access
 - Food Environment
- **Natural & Environmental Features**
- **Neighborhoods**
 - Unincorporated Hillsborough County
 - Tampa
- **Transportation**



Twice Yearly Updates*

- **Future updates will include:**
 - **Chronic disease indicators** for all of Hillsborough County
 - **Assets Location Tab**
 - Libraries
 - Recreation & Senior Centers
 - Schools
 - Adult Learning Centers
 - **Community Park Access**



* Pending available funding



Brief Demonstration

<http://www.planhillsborough.org/health-atlas/>



Contact Information

Name: Brandon Berry

Phone Number: 813.272.5940 x384

Email: berryb@plancom.org



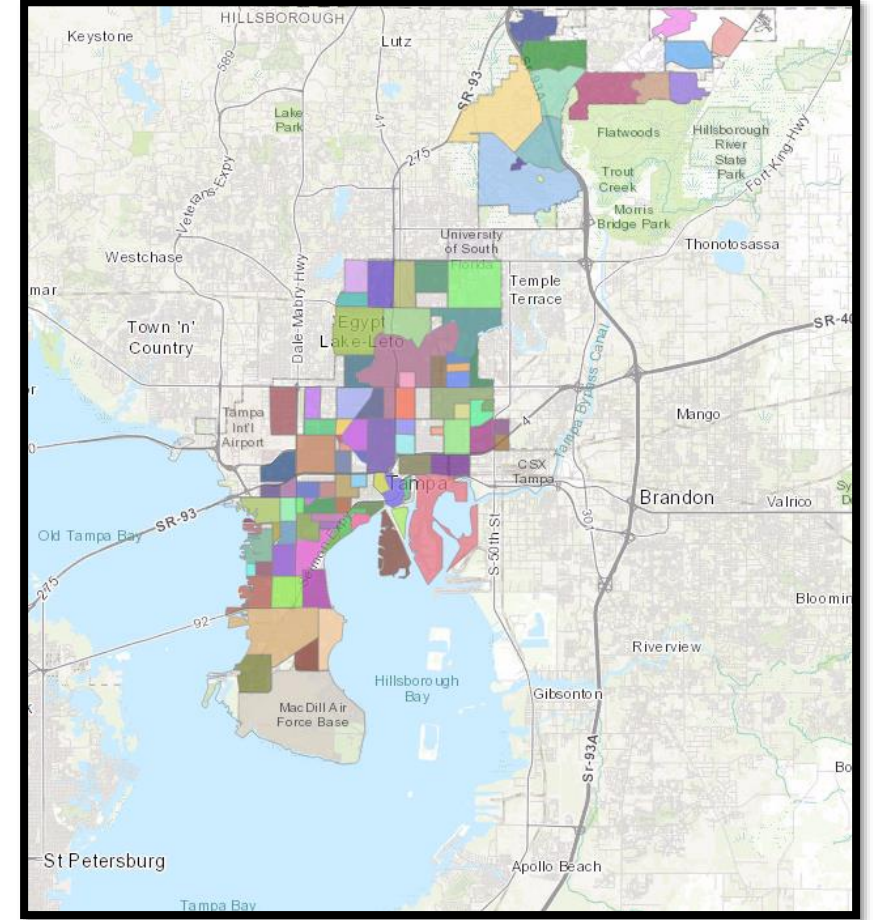
Data Sources

- Centers for Disease Control & Prevention
- EPA EnviroAtlas
- Florida Geographic Data Library
- Florida HealthCHARTS
- Hillsborough County



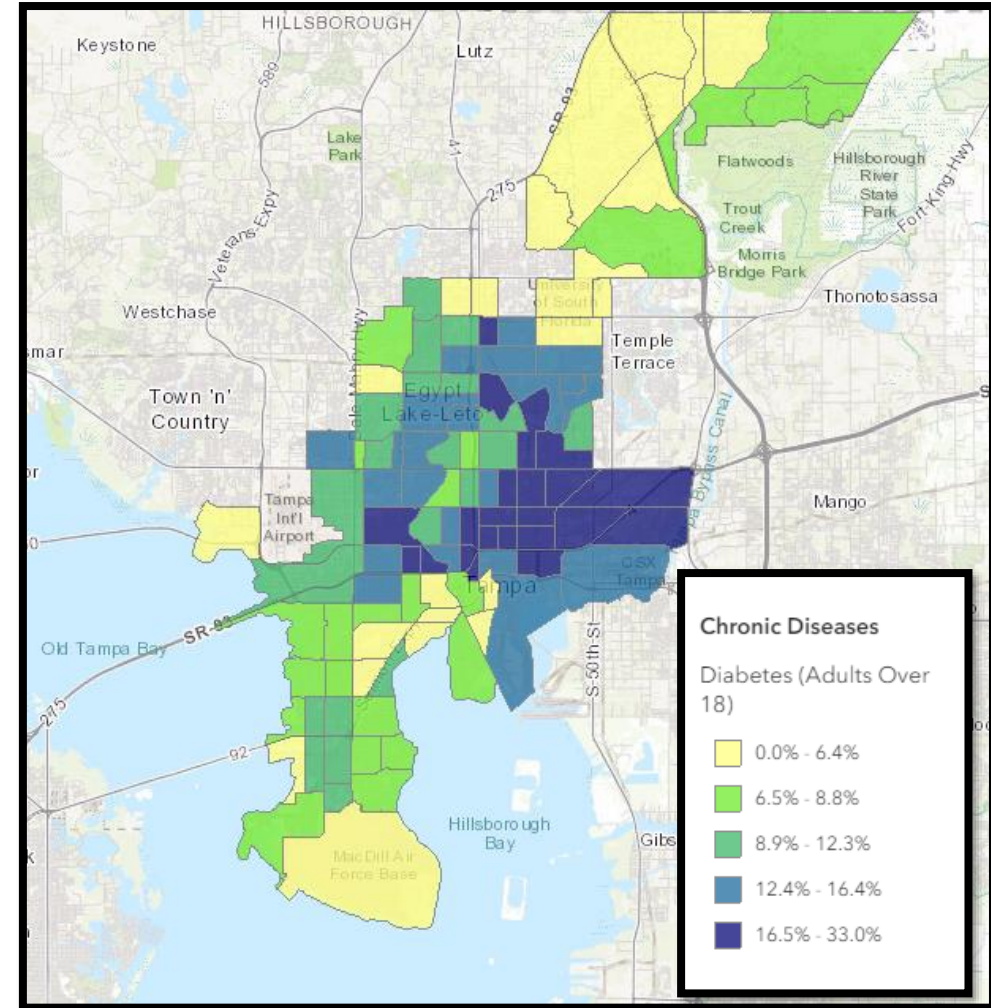
Community

- Jurisdiction Boundary
- Tampa Neighborhoods
- Unincorporated Hillsborough County Communities



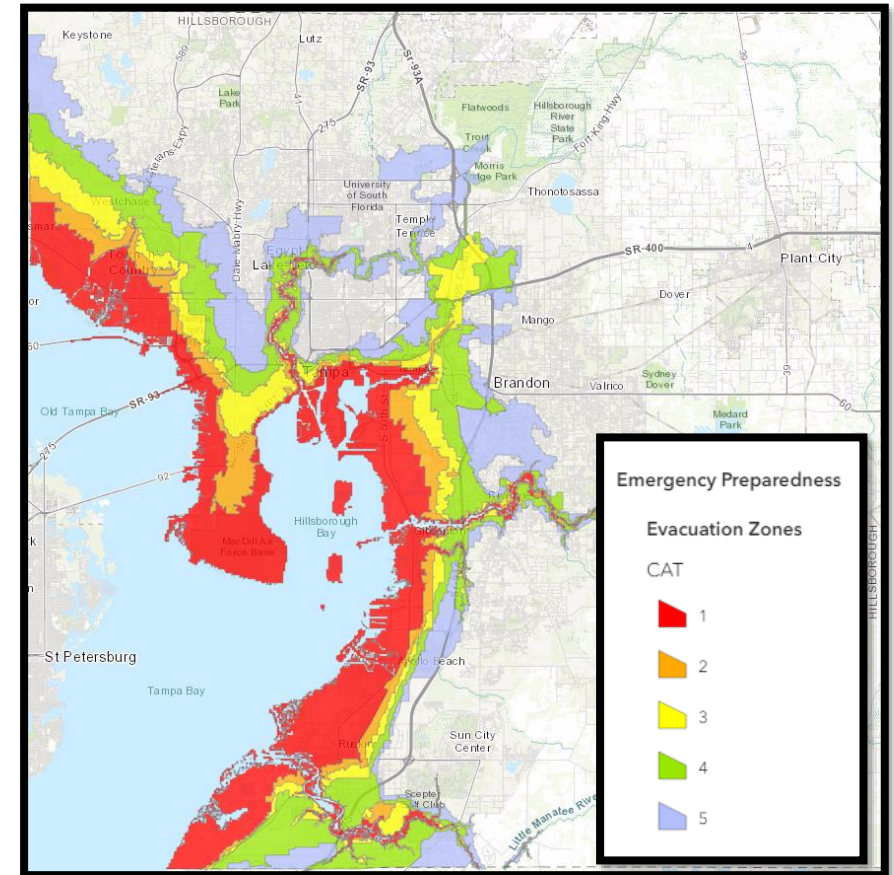
Chronic Health

- Arthritis
- Asthma
- Coronary Heart Disease
- Diabetes
- Mental Health/Physical Health Reported Poor
- No Leisure-Time Physical Activity
- Obesity
- Physical Health Reported Poor



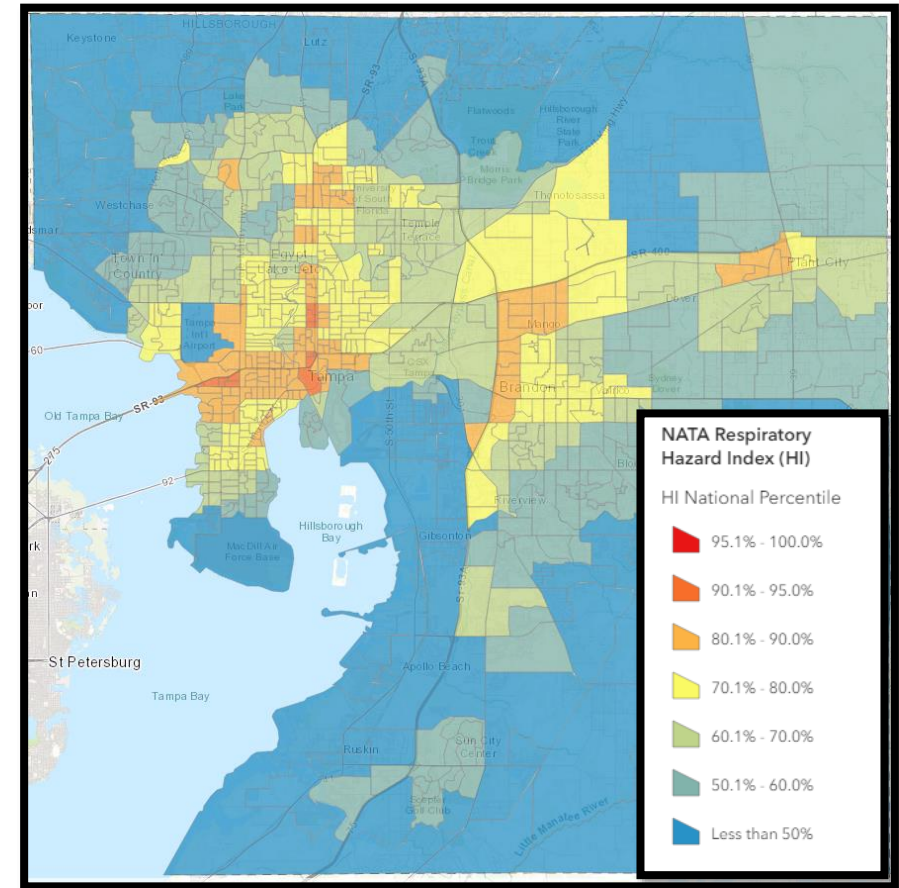
Emergency Preparedness

- Evacuation Zones
- Fire Stations
- Hospitals
- Law Enforcement
- Shelters



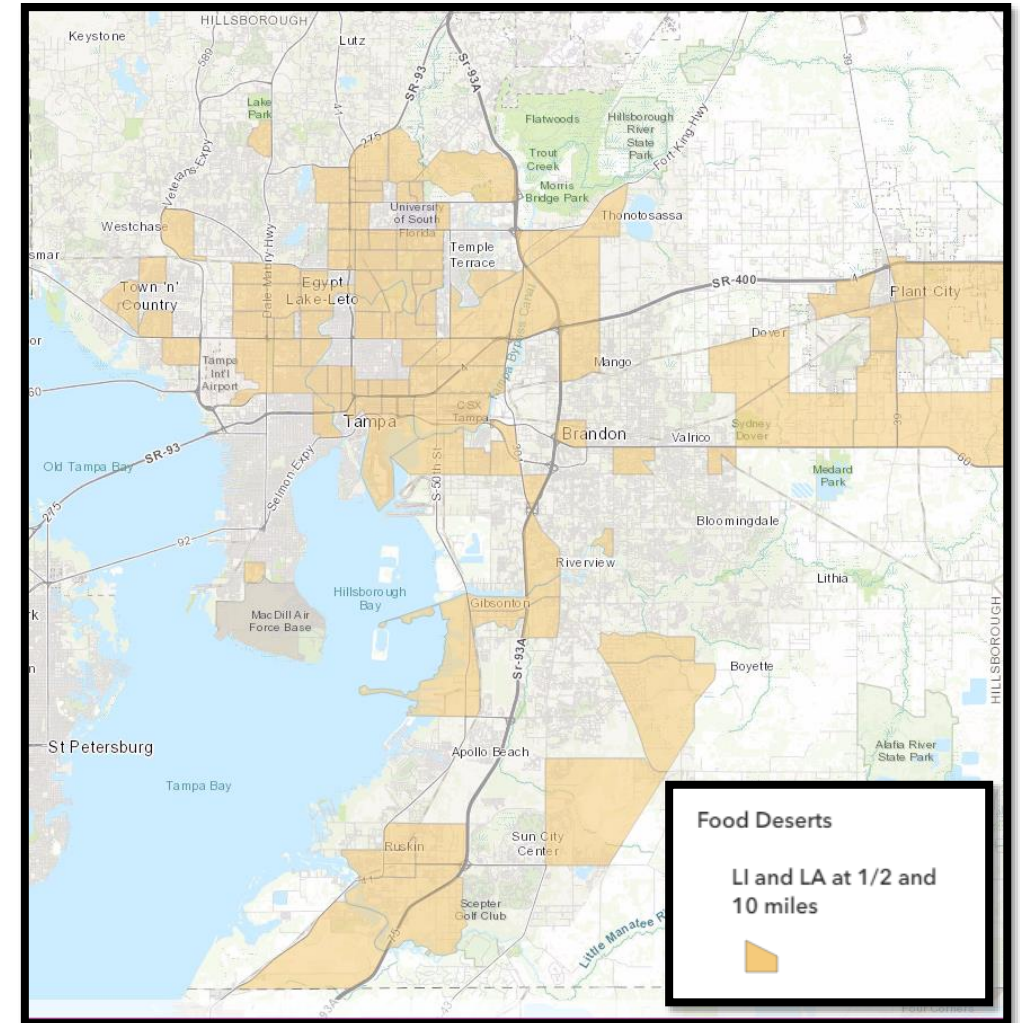
Environmental (Select Layers)

- Brownfield Locations
- EPA-Regulated Superfund Sites
- NATA Respiratory Hazard Index
- PM 2.5
- Superfund Site Proximity



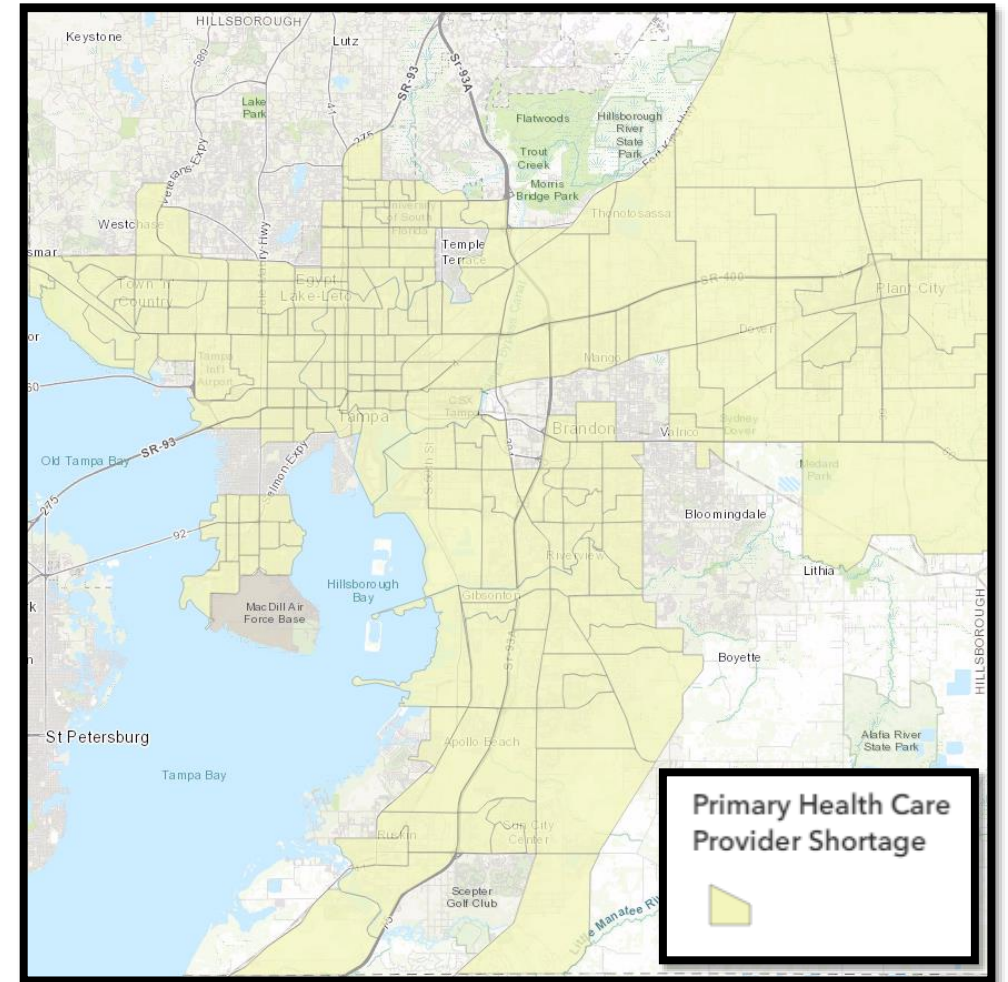
Food Environment

- Food Deserts
- Meal Provider Locations



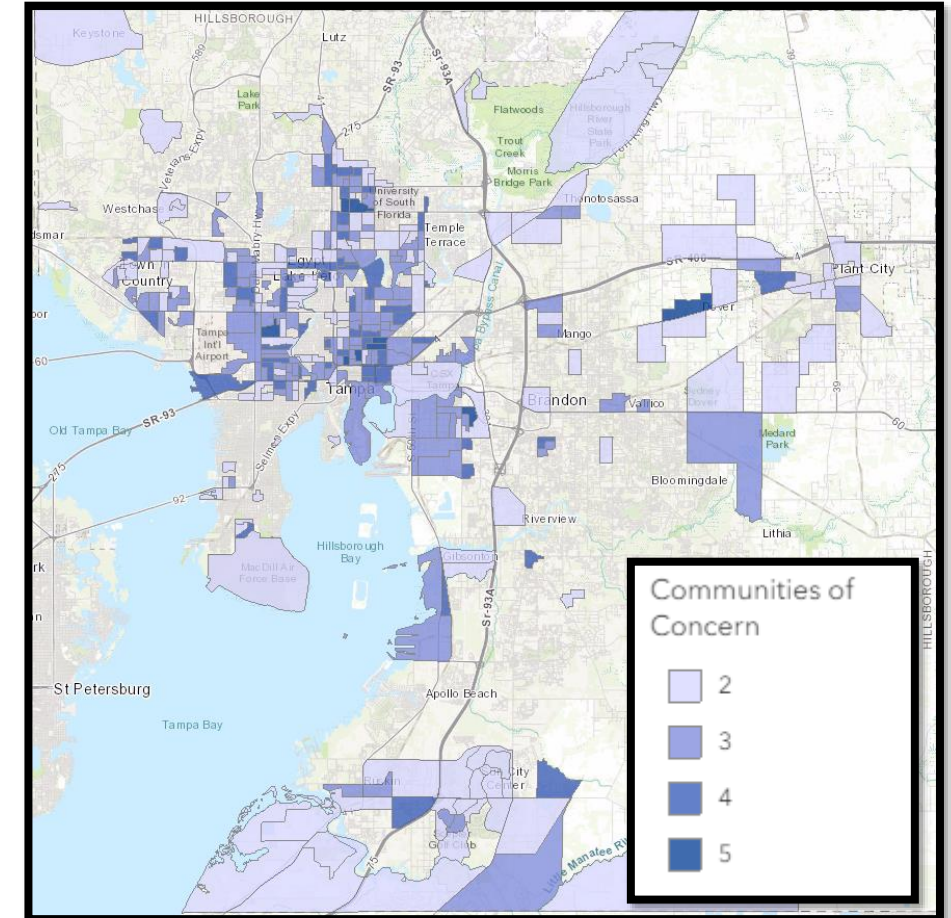
Health Care Access

- Dental Health Care Provider Shortage Areas
- Healthcare Facilities
- Mental Health Care Provider Shortage Areas
- Primary Health Care Provider Shortage Areas



Socioeconomic Status

- Age
- Communities of Concern
- Disability
- Education
- Per-Capita Income
- Population Density
- Race
- Renters
- Sex
- Unemployment Rate



Transportation

- HART Bus Routes
- Mapped TIP Projects
- Severe Crashes
- Sidewalks
- Traffic Proximity
- Traffic Volume
- Walkability Index

