

# Tampa Bay Express (TBX)

Hillsborough County Citizens Advisory Committee-May 11, 2016  
Florida Department of Transportation  
District Seven



**TAMPA BAY EXPRESS**

A NEW CHOICE FOR A BETTER COMMUTE





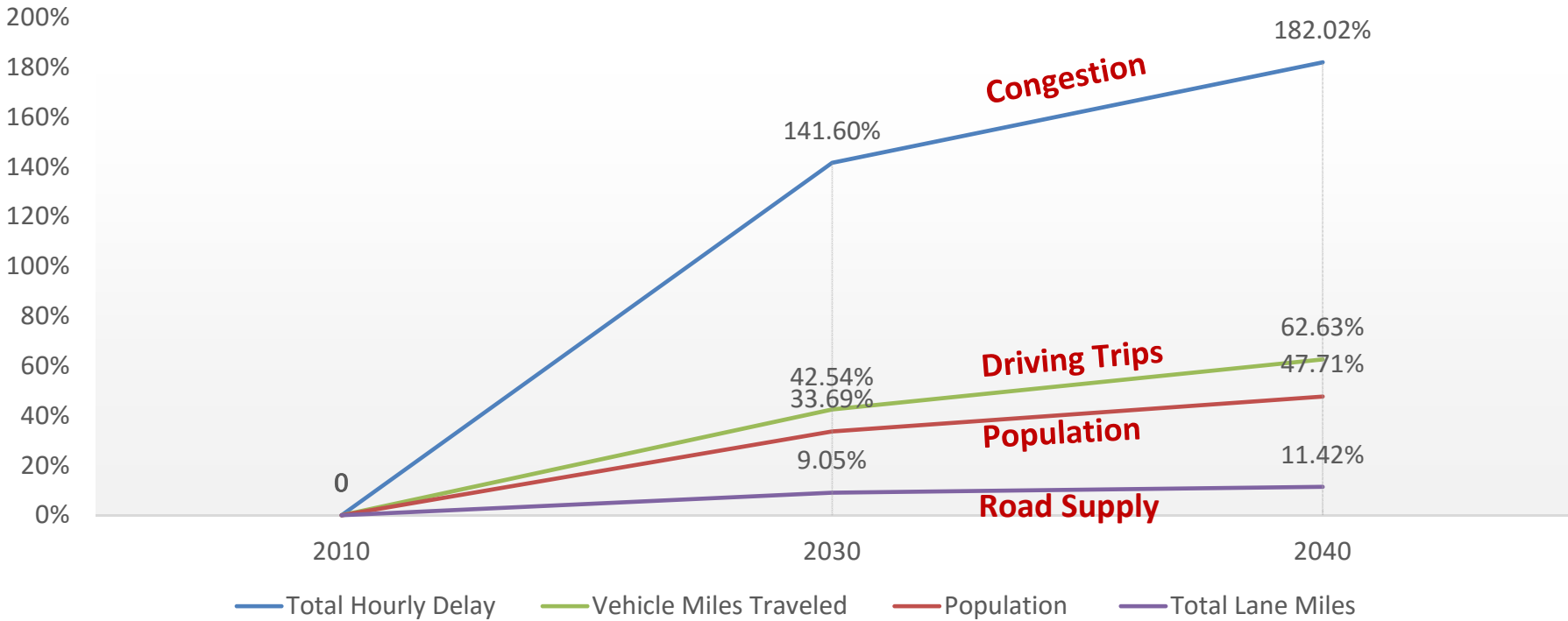
# Why is TBX needed?

- Roadway Congestion and Delay
- Population and Employment Growth
- Limited Capacity
- Aging Infrastructure
- Transit Options



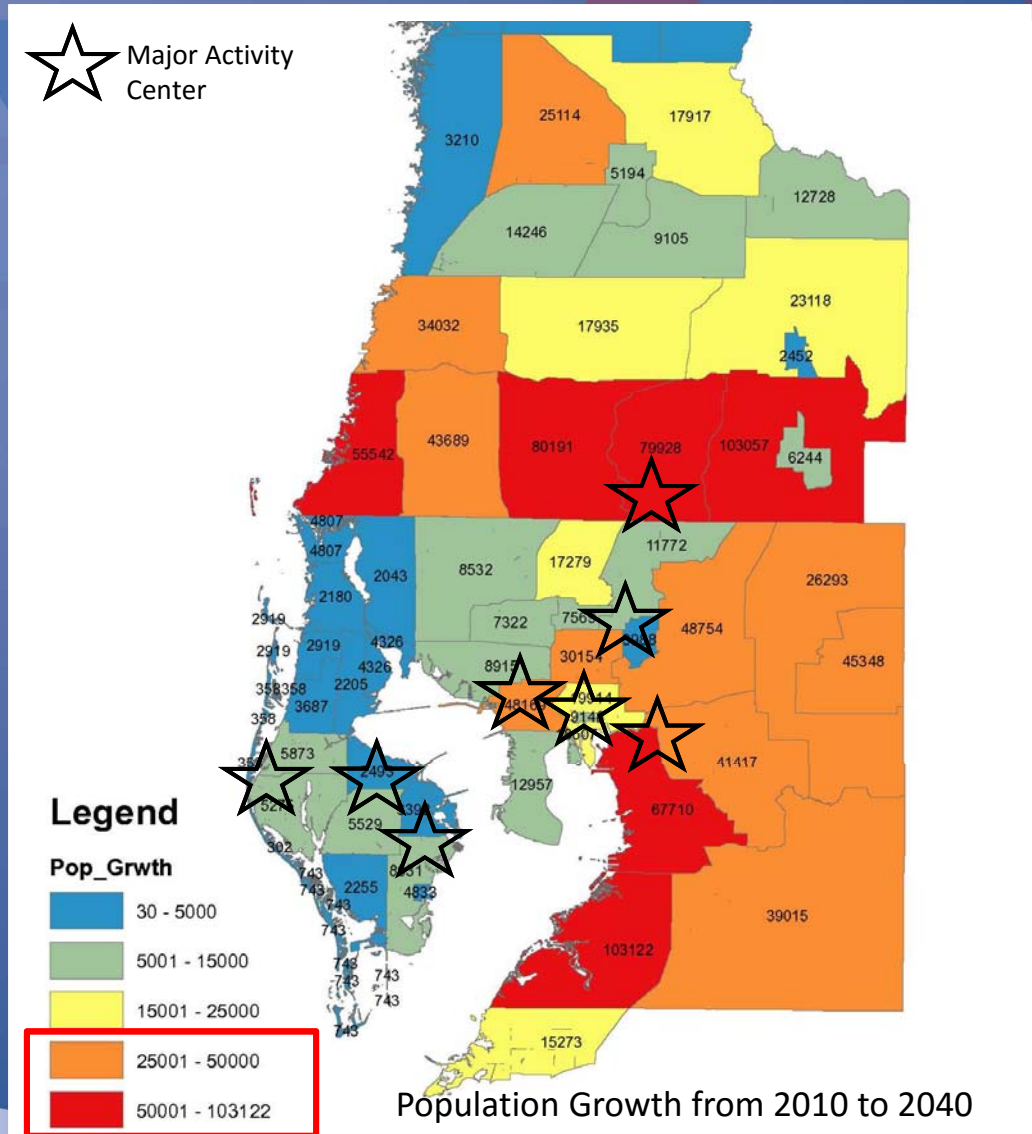
# Why is TBX needed?

## The Forecast With Half a Million More Residents Hillsborough County



# A Growing Region

- Population
  - Hillsborough: +48%
  - Pasco: +97%
  - Polk: +41%
- Employment
  - Hillsborough: +56%
  - Pasco: +200%
  - Polk: +45%

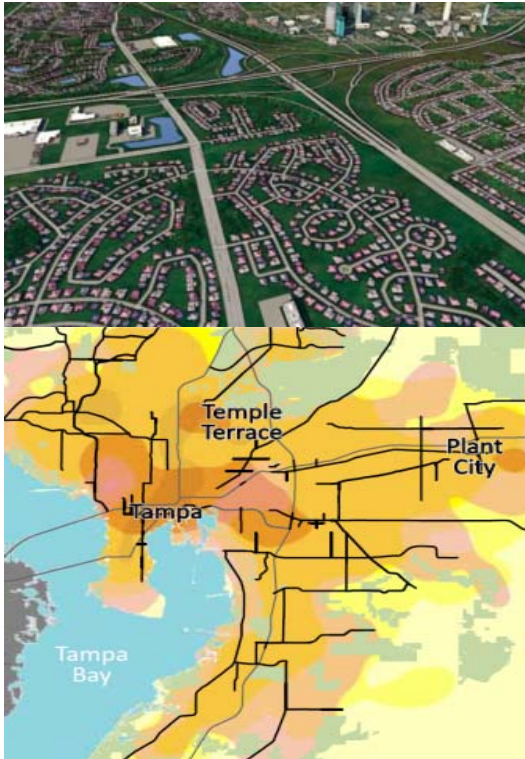


Source: Tampa Bay Regional Planning Model, 2016

# Implementing the Imagine 2040 Plan

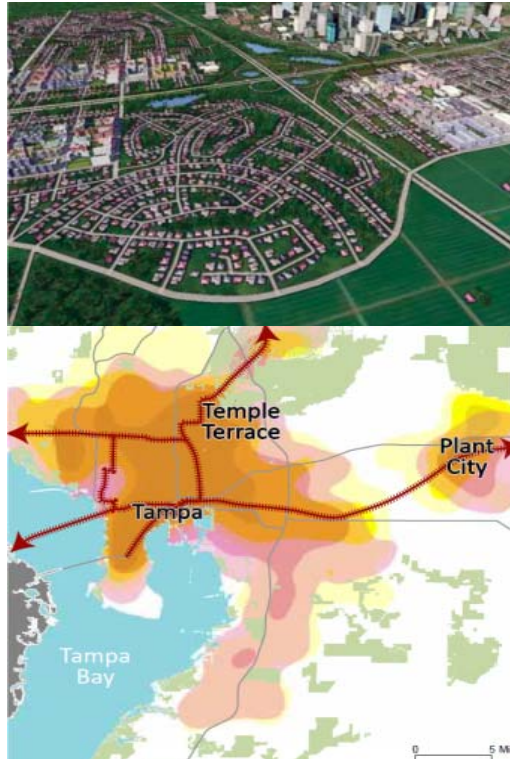
## Growth Scenarios:

### A. Suburban Dream



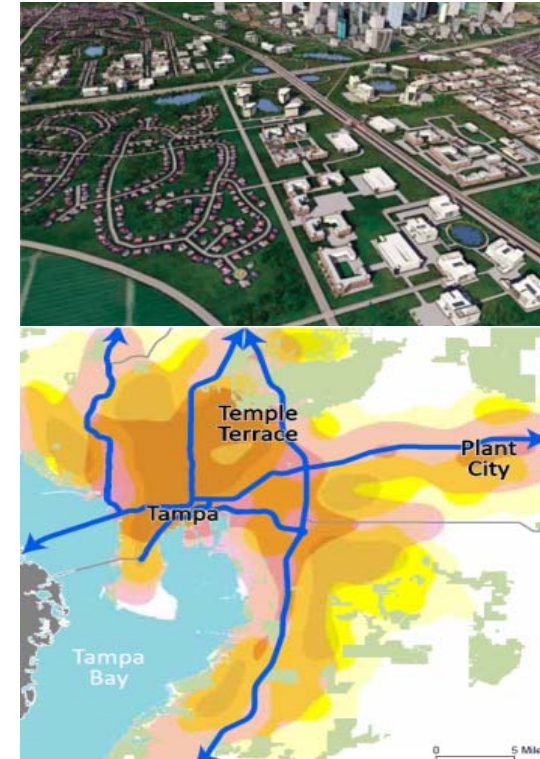
Expand the growth boundary to make room for new suburbs. Extend roads & water lines, rebuild major intersections.

### B. Bustling Metro



Create new town centers in older commercial areas. Add rapid bus, rail, circulator shuttles, walk/bike connections.

### C. New Corporate Centers



Create new corporate parks along major highways. Add new express toll lanes in the interstates (I-4, I-75, I-275)

# Transportation & Land-Use Trade-offs

## Traffic Delay

More people and jobs mean more cars on the road for a longer period of time, unless some trips are on bus or rail, or are shorter because homes and destinations are less spread out.



Worse Than Today Better Than To

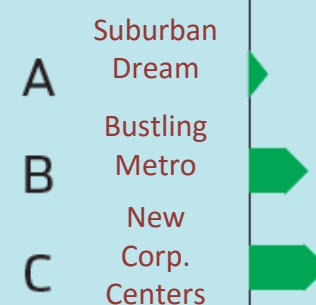


## Job Creation

Part of growing and attracting new businesses is having places ready for business growth.



Worse Than Today Better Than Today

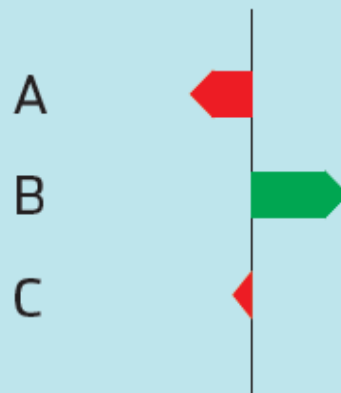


## Available Bus or Rail Service

Public transit offers choices to access jobs, health care, and other activities for those who cannot or prefer not to drive.



Worse Than Today Better Than To

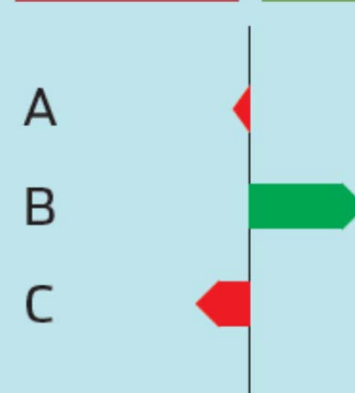


## Access to Jobs from Under-employed Communities

Moderately priced housing may be a longer drive or bus ride from a living-wage jobs.



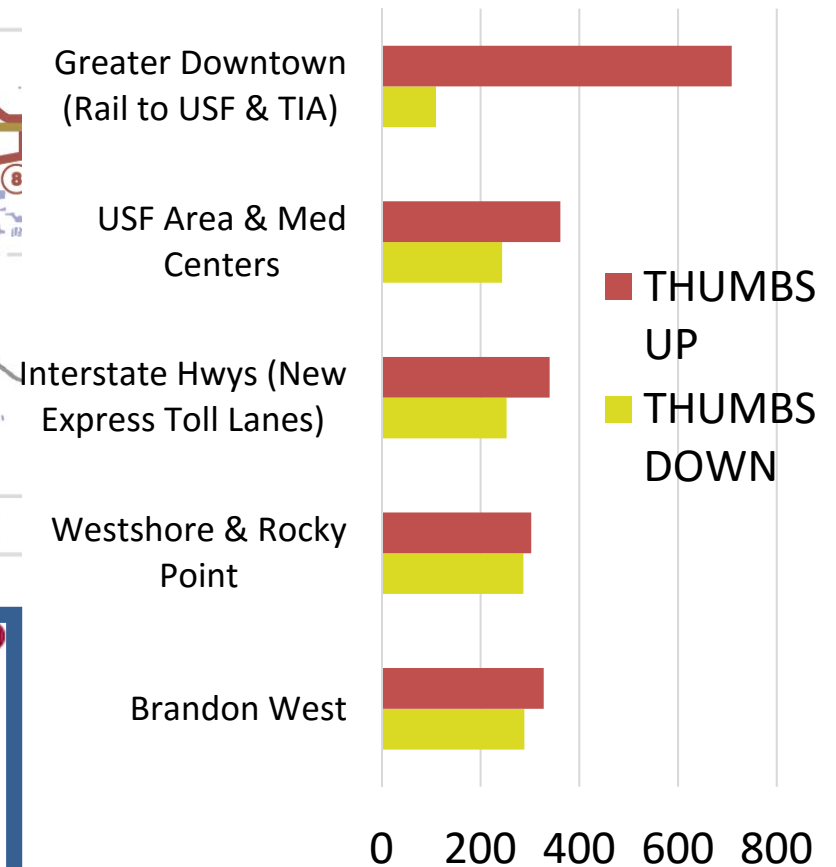
Worse Than Today Better Than Today



# MPO Survey Results from 2,500 Respondents



## Major Projects for Job Growth





# Transit Impact on Highway Traffic

- Nationwide, 5-6% of commuters take transit
- 200,000 vehicles/day travel I-275 and I-4
- Even if 10% took transit (20,000 vehicles)
- We would still be CONGESTED.



**WE NEED IT ALL!!**

# What are the benefits?

- Connectivity
- Congestion Management
- Commuter Choice
- Transit Opportunities
- Trip Reliability
- Economic Development





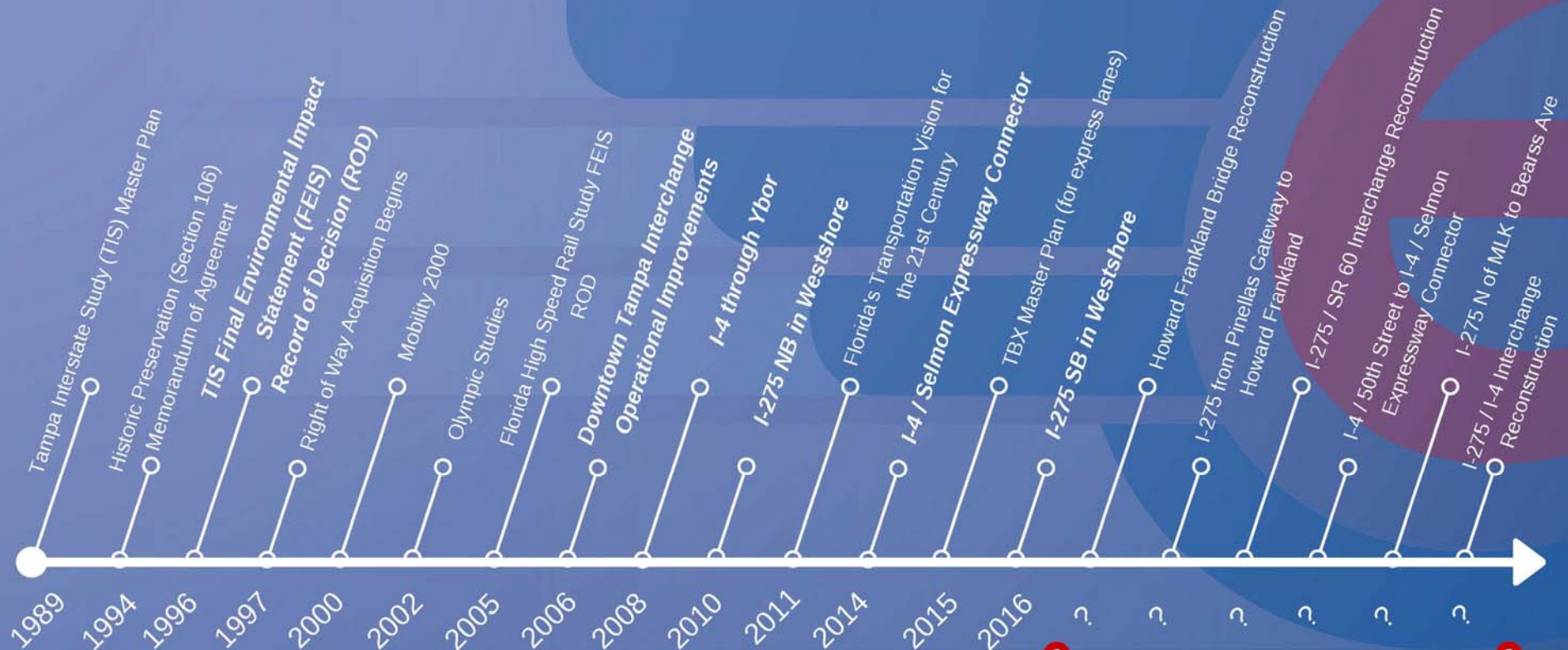
# FDOT Investment in Transit

**\$275 MILLION**

- Median Transit Corridor on I-4 and I-275
- Express Bus in Express Lane Study (\$200K)
- HART's Express Bus Service in Express Lanes (\$3M/5 Year)
- Downtown Tampa Multimodal Site (\$3.9M in 2006)
- TIA's Automated People Mover (\$194M in 2013)
- Westshore Regional Multimodal Site (\$45M in 2016)
- HART's Regional Premium Transit Feasibility Study (\$1.5M)
- Tampa's TECO Line Streetcar Extension Study (\$1M)
- HART's Kennedy Blvd. Metro Rapid Corridor Study (\$2.5M)
- State Block Grant to HART (\$24.2M/Five Year)



# Tampa Bay Interstate System



**Original Studies**

**Previous Reevaluations**



Community Engagement and Agency Coordination

**CONDUCTED AT LEAST 6 REEVALUATIONS**



# What does a Reevaluation do?

- Updates traffic
- Refines design concept
- Reevaluates environmental impacts



Social



Cultural



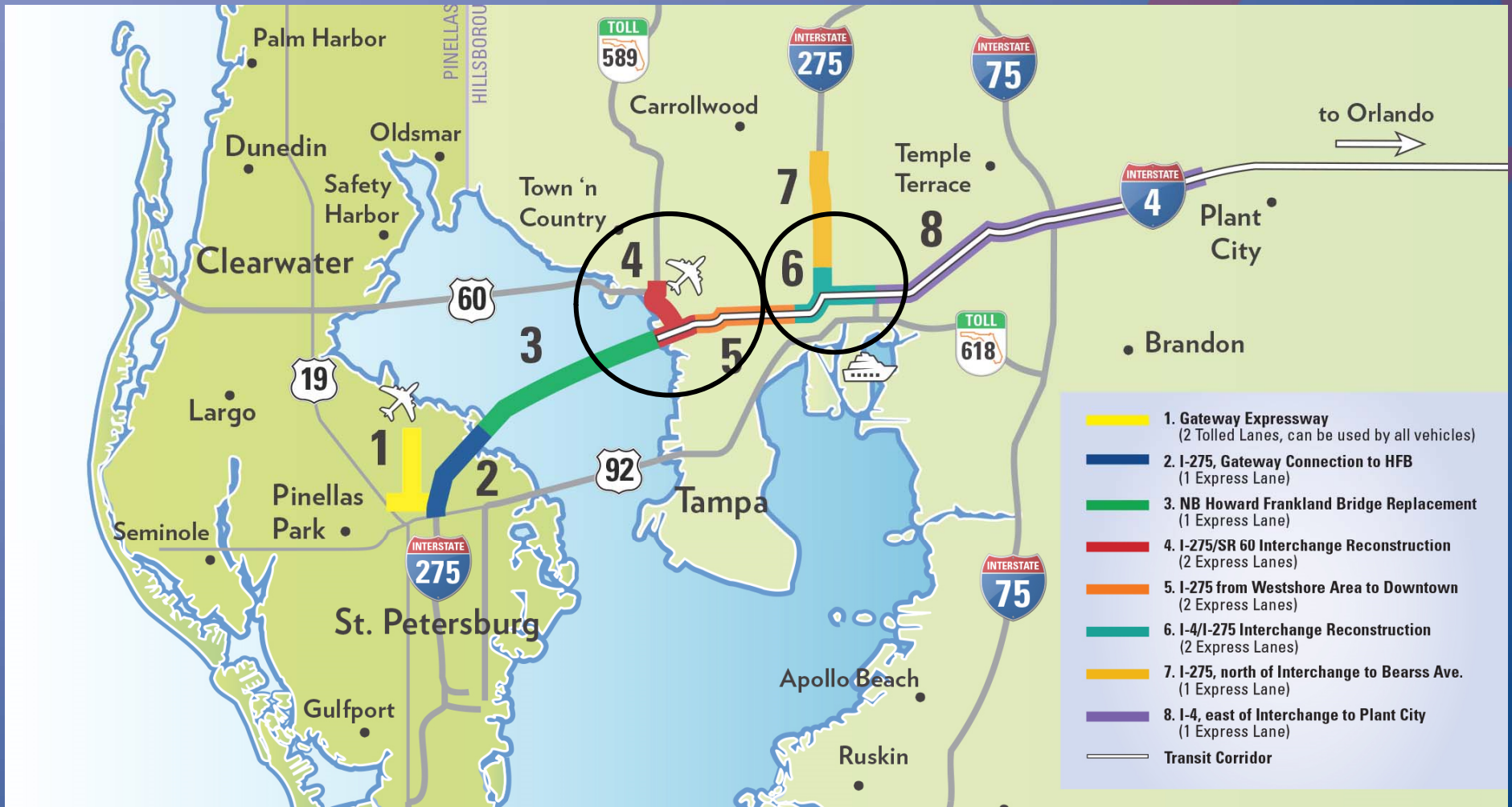
Natural



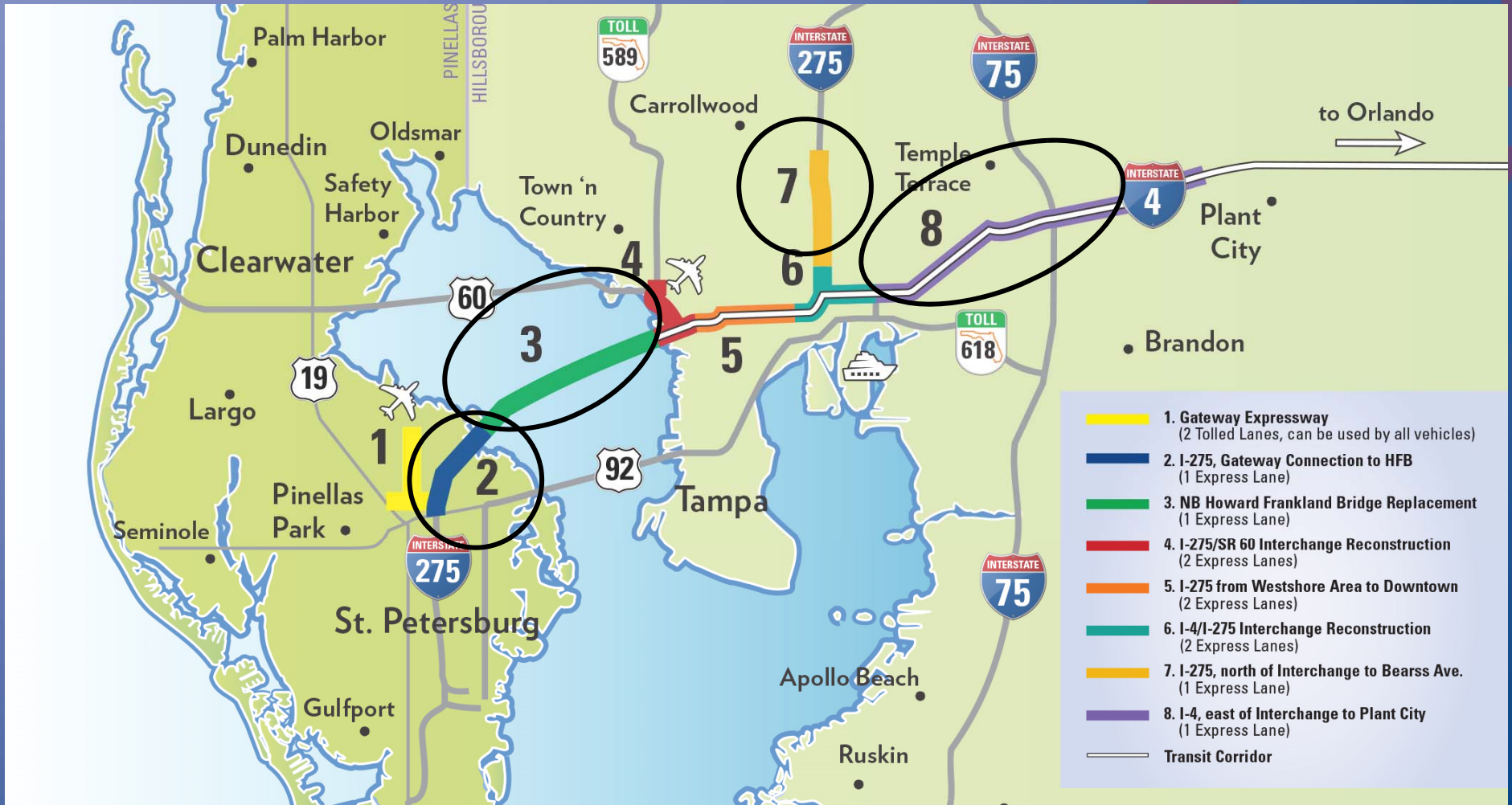
Physical

- Updates commitments and plan consistency
- Additional public outreach

# Where are we today?



# Where are we today?





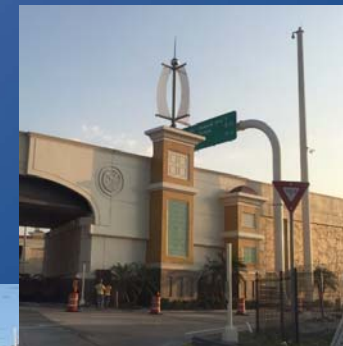
# Community Commitments

- Urban Design Guidelines
- Historic Resources
- Bicycle/Pedestrian
- Tampa Heights Greenway
- Multimodal Center
- Construction Techniques
- Noise Barriers



# Urban Design Guidelines

- Fulfilled or Nearly Fulfilled
  - I-4 through Ybor City
  - I-4/Selmon Expressway Connector
  - I-275 through West Tampa
- To be fulfilled
  - Downtown Tampa
  - Tampa Heights
  - Seminole Heights
  - Westshore



# Historic Preservation

Before



During



After



# Historic Preservation

Before



After



Interior Renovations

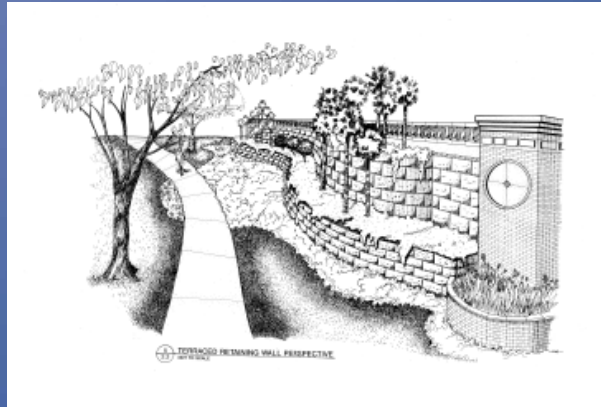


# Greenways and Trails

- Tampa Heights Greenway from Columbus Avenue to Waterworks Park
- Connecting gaps through Westshore Business District in partnership with City of Tampa



Greenway along I-275



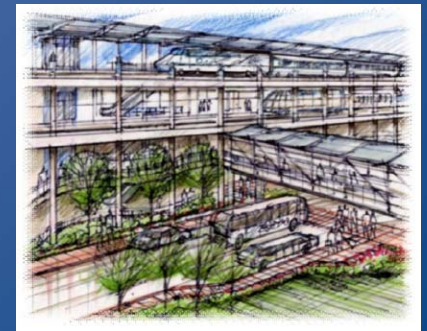
Artist's Rendering of Tampa Heights Greenway



Courtney Campbell Causeway Trail

# Multimodal Centers

- Downtown Tampa – Former Morgan Street Jail property (2006)
- Westshore Business District – Double Tree Hotel and Charley's Steakhouse properties (2015)



## Tampa Bay Interstate Public Outreach Summary

### 1980s - Tampa Interstate Study Master Plan

- Small Group Meetings
- Citizens Advisory Committee
- Agency Task Force
- Public Workshops
- Newsletters
- Media Outreach

### 1990s – Tampa Interstate Study (TIS) Final Environmental Impact Statement (FEIS)

- Urban Design Community Workshops
- Citizens Advisory Committee
- Agency Task Force
- Relocation Task Force
- Cultural Resource Committee
- Historic Resources Public Meetings
- Newsletters
- Media Outreach
- Public Workshops
- Public Hearings
- Design Review Committee

### 2000s – Final Design Community Outreach

- Newsletters
- Design Open Houses
- Special Presentations and One-on-One Meetings
- Media Outreach
- Cultural Resource Committee
- Design Review Committee

### 2010s – Tampa Bay Express Master Plan

- Project identity graphics
- Video
- Website
- Microsite
- Facebook page
- E-brochure
- E-press kit
- Media Outreach
- Special Presentations and One-on-One Meetings
- Focus Groups
- Radio Spots
- Public Workshops

### Current-Tampa Bay Express PD&E Studies

- Individual project PIPs
- Mailing List
- Newspaper Advertisements
- Press Releases
- Newsletters
- Project Websites\*
- Coordination meetings with stakeholders
- Special presentations
- Public Hearing
- Comments and Coordination Report
- Design Charrettes
- Local Community Outreach Office
- Speaker Circuit/Library Tour
- Media Outreach
- Social Media

**Ten-thousands of Newsletters**  
**Numerous Ads and Articles in the Newspaper**  
**Hundreds of Meetings and Presentations**  
**Thousands of Persons View the Website each Month**

# Community Design Charrettes

- USF Florida Center for Community Design and Research (FCCD+R)
- Downtown Tampa, Tampa Heights, West River, VM Ybor, and Seminole Heights
- Round 1: Oct 2015-Jan 2016 (9 sessions)
- Round 2: Jan 2016-Mar 2016 (8 sessions)
- Round 3: Mar 2016-Jun 2016 (7 sessions)

**fccd+r**

florida center for community design and research

**USF**

**UNIVERSITY OF  
SOUTH FLORIDA**





# Neighborhood Concerns and Goals



Transit Options

Connectivity



Public Realm Enhancements

Street Corridor Design



# Reconnecting Communities

- I-275 at SR 60 Interchange in Westshore
  - Reo Street
  - Occident Street
  - Trask Street
- I-275 at I-4 in Downtown Tampa
  - Design Charrettes to identify opportunities for connectivity

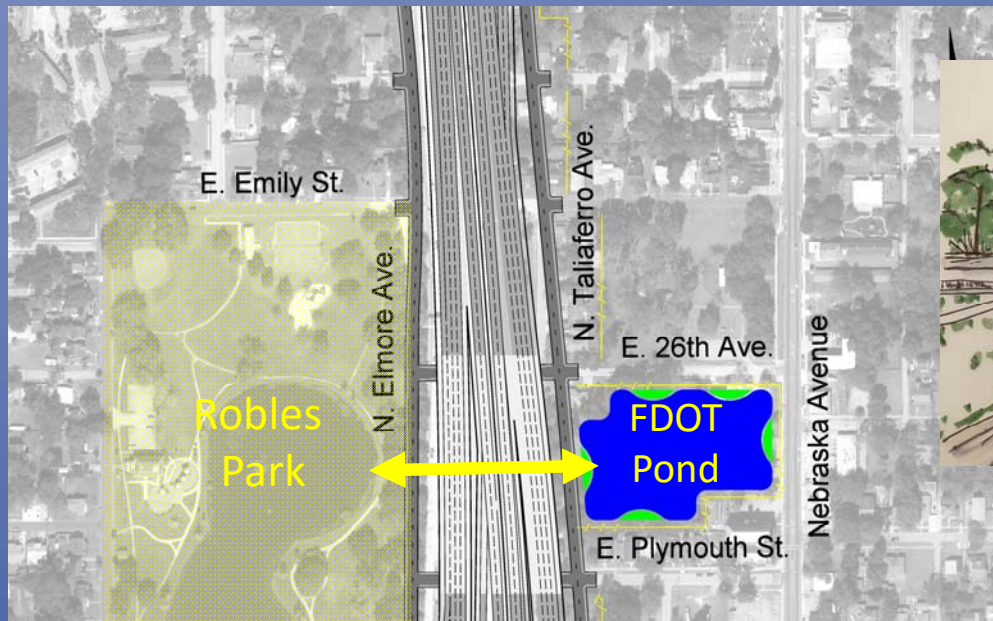
**fccd+r**  
florida center for community design and research

**USF** UNIVERSITY OF  
SOUTH FLORIDA



# Reconnecting Communities

- Robles Park
  - Working with the City of Tampa



Artist's Rendering

# Street Corridor Design

- Enhanced pedestrian connectivity and safety under some overpasses
- Landscaping/Trees
  - Working with City of Tampa

Non-standard Fencing

Straight vs. Slanted Walls



Bicycle/Pedestrian Amenities

Pedestrian Lighting

Landscaping

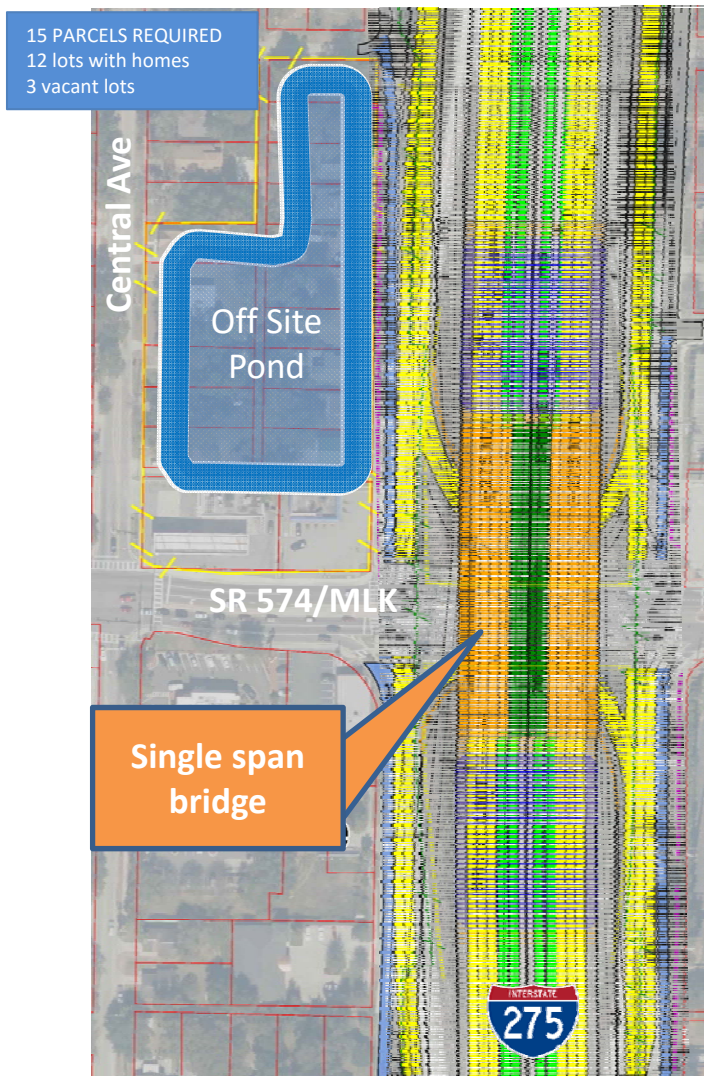
# Enhanced Transit Service

- Working with HART
  - Route 1 (Florida Avenue)
  - Route 14 (Armenia and North)
  - Route 15 (Columbus)
  - Route 32 (MLK Jr. Blvd)
  - Route 32Plus (Express service to TIA)
- Express buses and public school bus have toll-free access to express lanes

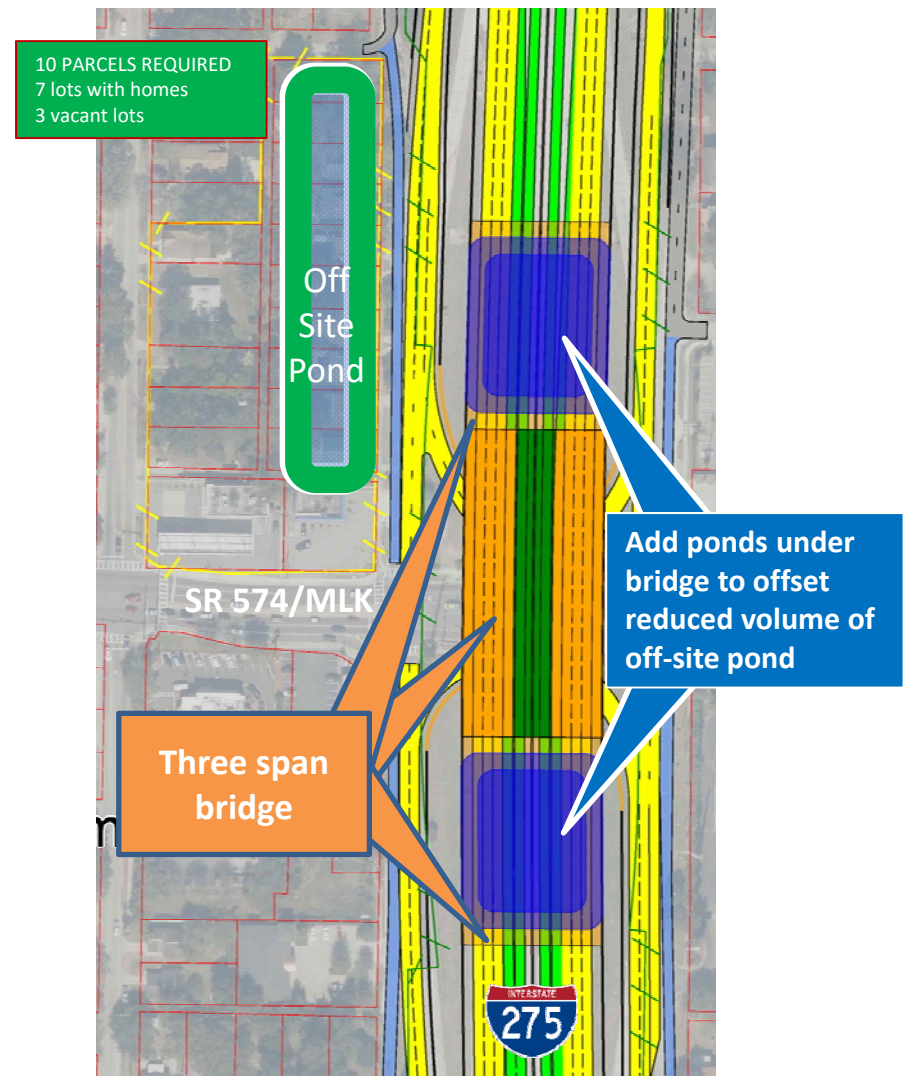


# Public Realm Enhancements

**PREVIOUS POND CONCEPT AT I-275  
AND MLK JR. BLVD.**



**REVISED POND CONCEPT AT I-275 AND  
MLK JR. BLVD.**



# Public Realm Enhancements

- Underpass plaza between northern downtown and Tampa Heights
  - Working with City of Tampa
  - Connectivity between downtown Tampa and Tampa Heights neighborhoods
  - Economic Development Opportunity
- Relocation of Community Garden
  - Working with City of Tampa to identify property

# Tampa-Florida Corridor Study

- HCMPO study underway
  - Explored several multi-modal concepts
  - Reduced number of travel lanes
- HCMPO to work with FDOT, community, and stakeholders to identify preferred concept



# Moving Forward

- Commitments documented in PD&E
- Commitments carried forward into design-build contract
- Design Review Committee

# Stay Involved

- Local Outreach Office-Open since 3/28/16
- Community Design Charrettes:  
Public Summary Meeting-June 7, 2016
- Library Tour-May 2016
- Small Group Presentations-May-June 2016

[www.tampabayexpress.com](http://www.tampabayexpress.com)



FDOT West Central-Tampa Area @myFDOT\_Tampa



FDOT District 7

# Upcoming Library Tour Session

Robert W. Saunders, Sr. Public Library	5/10/2016	5:30pm-7:30pm
Robert W. Saunders, Sr. Public Library	5/12/2016	5:30pm-7:30pm
West Tampa Branch Library	5/17/2016	5:30pm-7:30pm
West Tampa Branch Library	5/19/2016	5:30pm-7:30pm
C. Blythe Andrews, Jr. Public Library	5/24/2016	5:30pm-7:30pm
C. Blythe Andrews, Jr. Public Library	5/26/2016	5:30pm-7:30pm
John F. German Public Library	6/9/2016	5:30pm-7:30pm

**Robert W. Saunders, Sr. Public Library**  
**Every Saturday from 10am-1pm**



SAFETY DOESN'T HAPPEN BY ACCIDENT.