

REGIONAL HURRICANE EVACUATION

Gandy Corridor

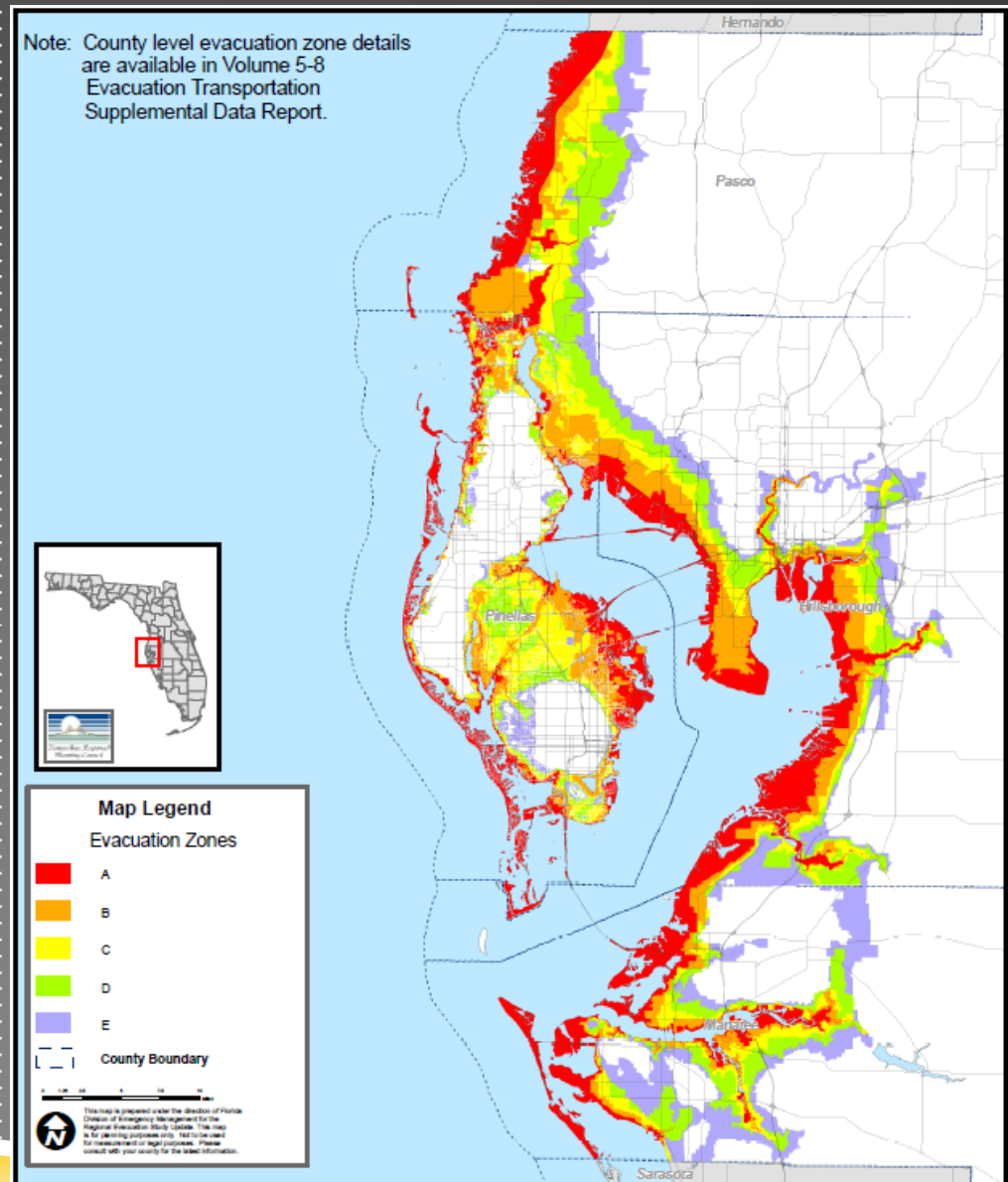
Betti C. Johnson, AICP, FPEM

Tampa Bay Regional Planning Council

August 2013

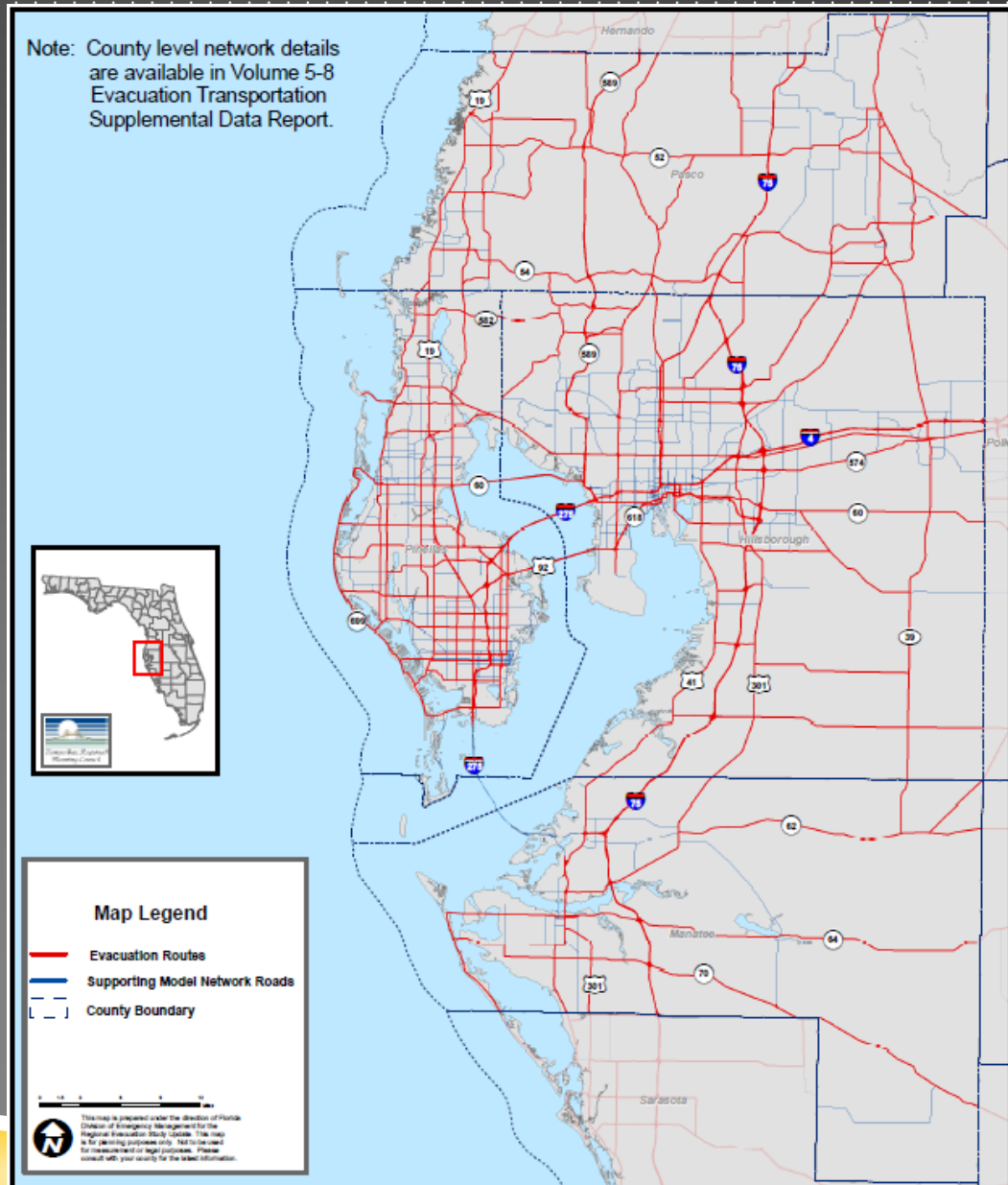
Hurricane Evacuation Zones

- Storm Surge Vulnerability
- Mobile Home Residents
- Shadow Evacuation
 - Base Scenarios
 - Operational Scenarios



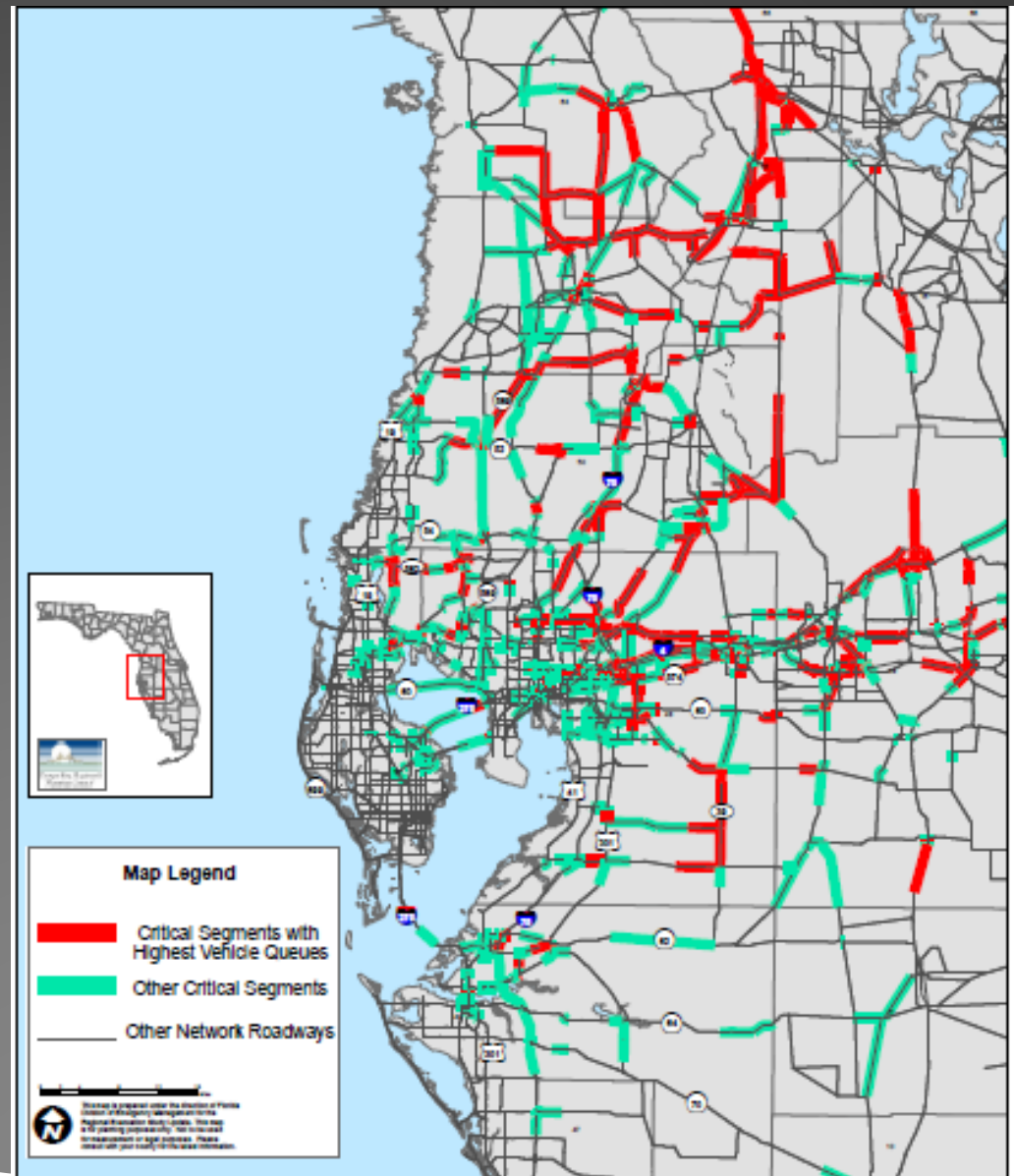
Evacuation Roadway Network

- Regional Evacuation Routes
- Supporting Network
- Multi-County and Multi-Regional Scenarios



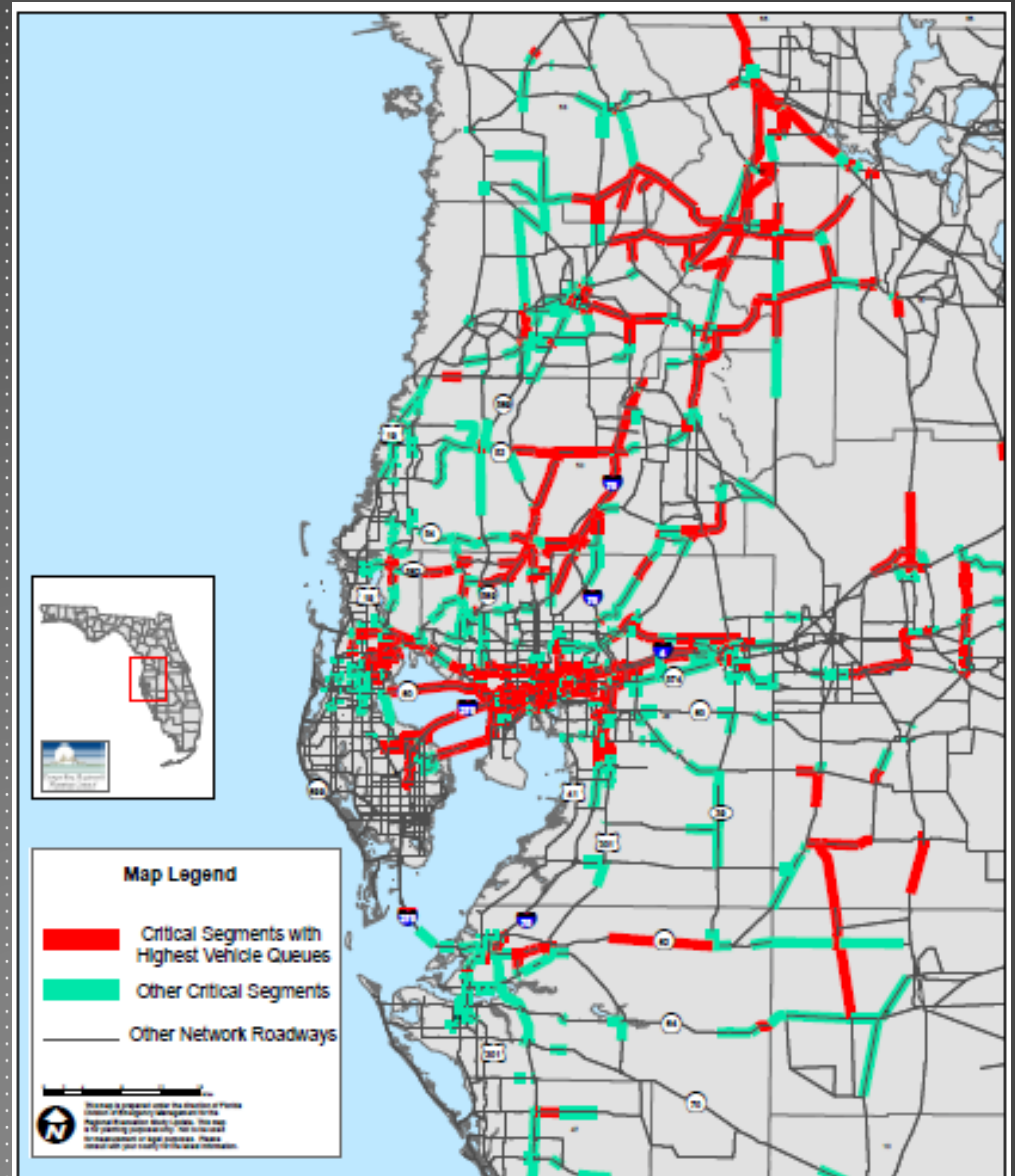
Critical Roadway Segments with Excessive Queues

2015 Base Scenario
Evacuation Level D



Critical Roadway Segments with Excessive Queues

2015 Base Scenario
Evacuation Level E



2015 EVACUATION LEVELS (BASE SCENARIOS)

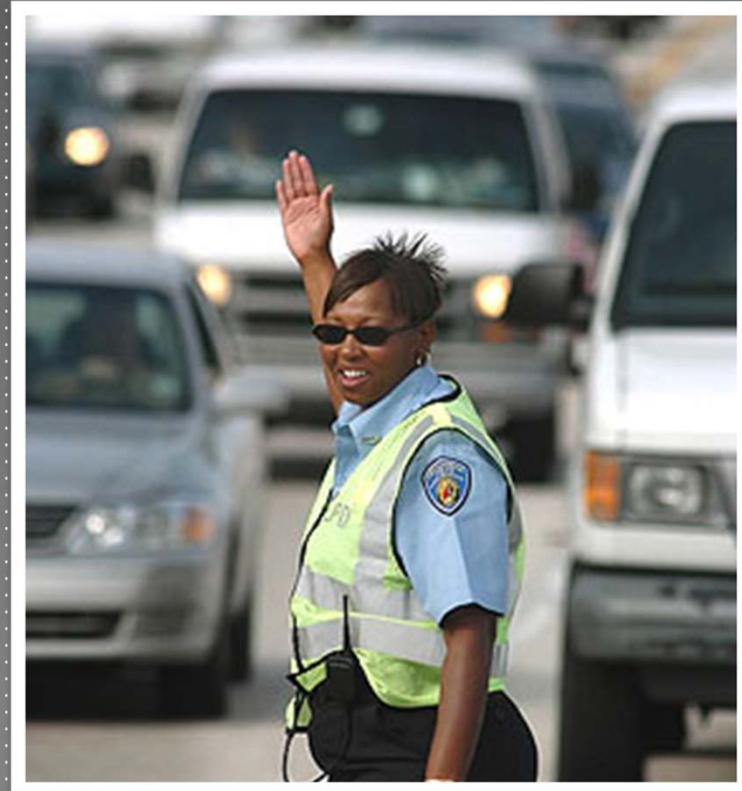
Level	Vehicles	Evacuation Times
▶ A	6,900 (bridge) – 13,800 (Expressway)	15.5/16.5
▶ B	9,500 (bridge) – 28,500 (Expressway)	22.5
▶ C	14,000 (bridge) – 28,500(Expressway)+	29.5/40.5
▶ D	17,700 (bridge) – 35,400 (Expressway) +	41.0/58.5
▶ E	20,000 (bridge) – 40,000 (Expressway)	55.0/57.5

2015 EVACUATION LEVELS (OPERATIONAL SCENARIOS)

Level	Vehicles	Evacuation Times
▶ A	5,200 (bridge) – 10,400 (Expressway)	12.0
▶ B	7,000 (bridge) – 14,000 (Expressway)	15.5
▶ C	12,200 (bridge) – 24,400 (Expressway)	26.0
▶ D	15,300 (bridge) – 30,600 (Expressway)	38.0
▶ E	20,000 (bridge) – 40,000 (Expressway)	78.0

REGIONAL EVACUATION COORDINATION

- ▶ Recognition of Study vs. Plan
- ▶ Ongoing Collaboration in Region 4
 - ▶ 8-County Emergency Management and Emergency Responders, State Agencies, Community Partners
 - ▶ RDSTF and Disciplines



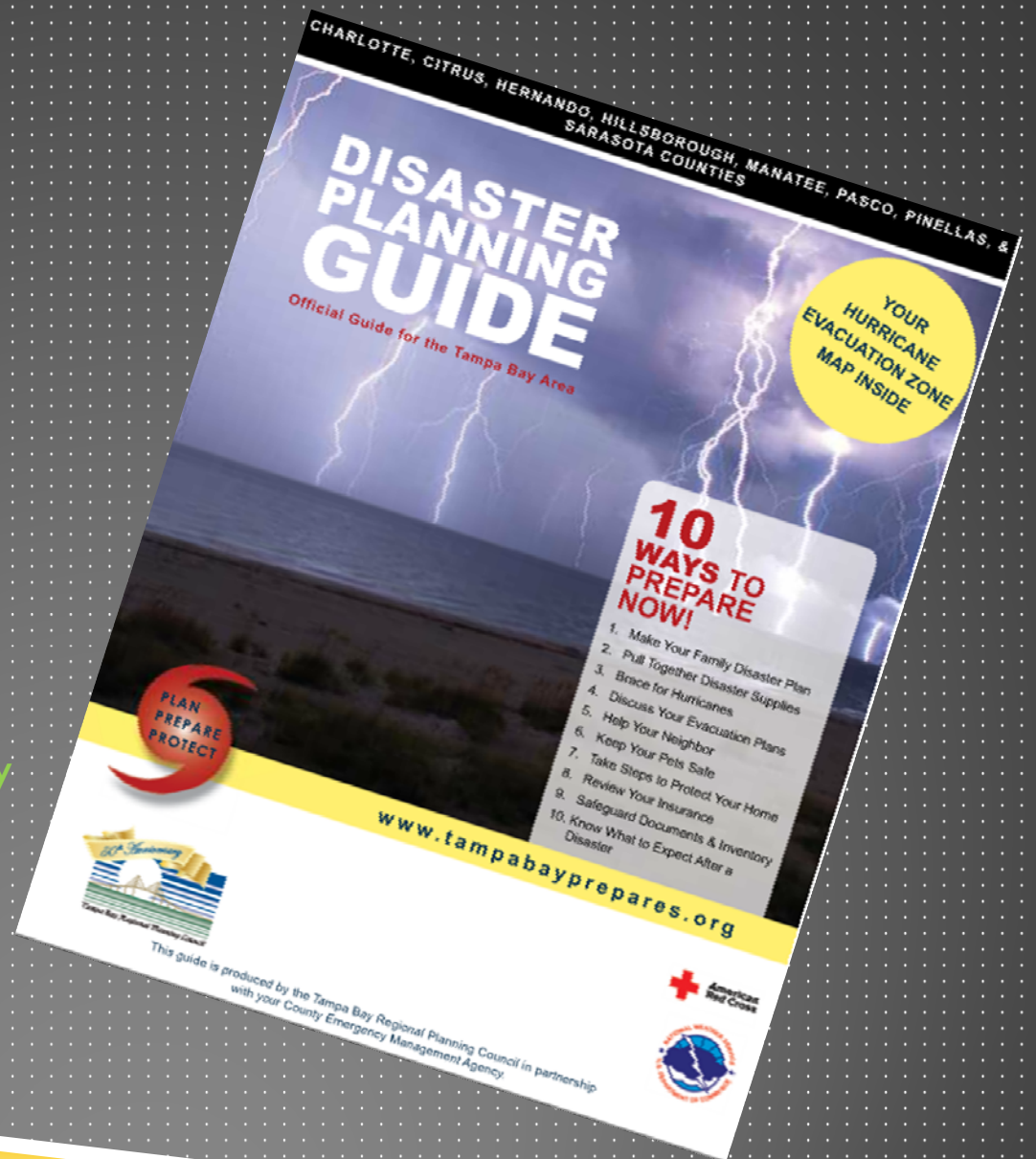
REGIONAL EVACUATION COORDINATION

- ▶ Coordination with the National Weather Service and National Hurricane Center and Emergency Management to develop **decision-making guidelines** for evacuation.
- ▶ Develop **written procedures/processes** which can be shared to the field level.
- ▶ Develop a **refuge of last resort plan** within both counties and a concept of ops which is shared for coordination.
- ▶ **PIO coordination** and development of pre-scripted messaging including ITS messaging boards, news releases, etc.
- ▶ **Continue discussions** surrounding data available and what is needed to facilitate decision-making during an event and how will coordination occur between agencies.

Regional Disaster Planning Guide

- Home and Family
- Business
- Zones
- Emergency Phone Numbers
- All-hazards Safety Information

Hillsborough County Emergency Management
813-236-3800



Additional Information

www.tampabayprepares.org

Preston Cook, Director
Hillsborough County Emergency Management

cookpr@hillsboroughcounty.org

Terry Hensley and Angela Allen
FDOT District VII

Terry.Hensley@dot.state.fl.us

Angela.Allen@dot.state.fl.us

Betti Johnson

betti@tbrpc.org

(727) 570-5151 ext. 39

