



GANDY CORRIDOR PROJECT

Hillsborough County MPO

Policy Committee

May 2013

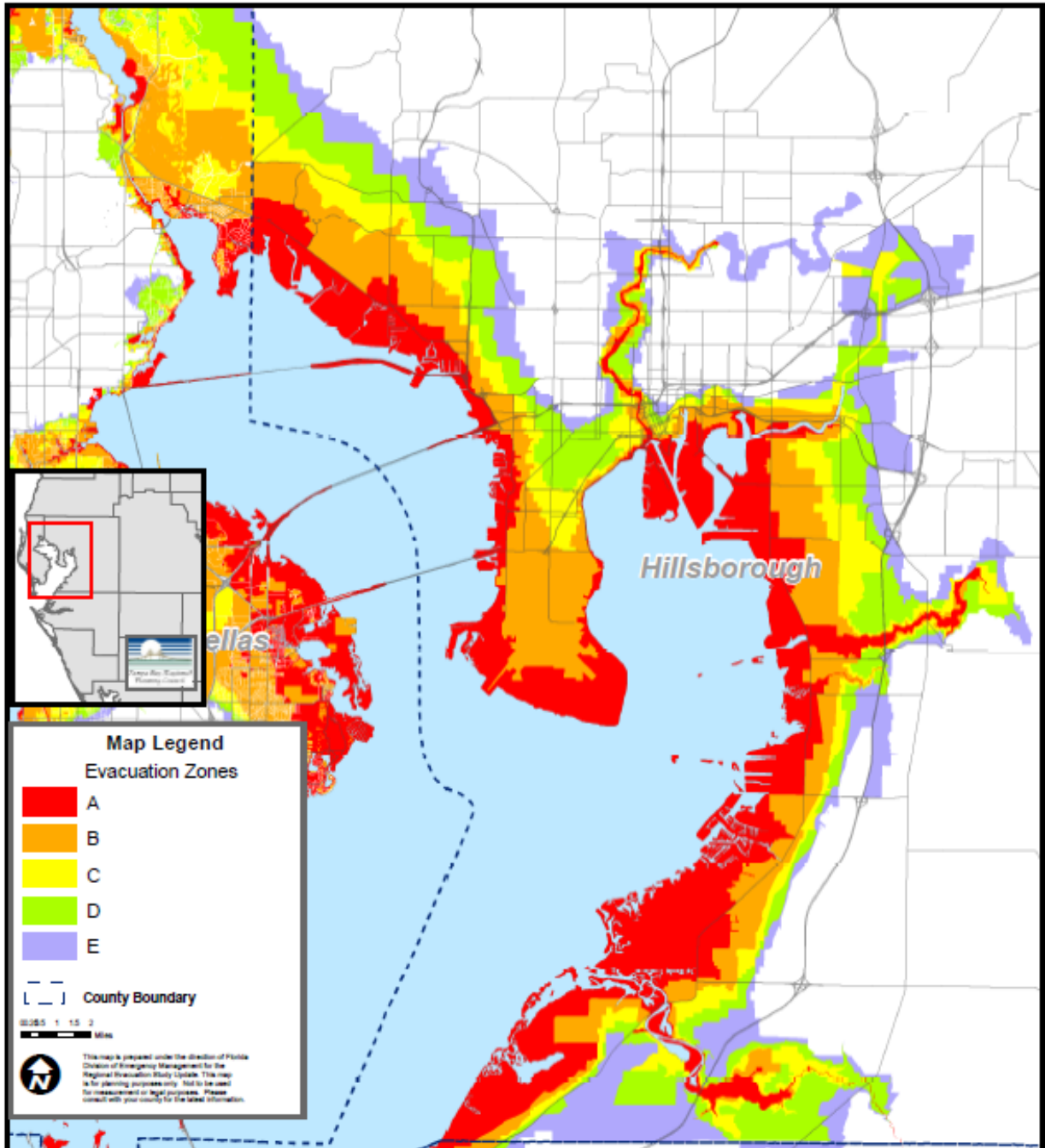


Emergency Evacuation

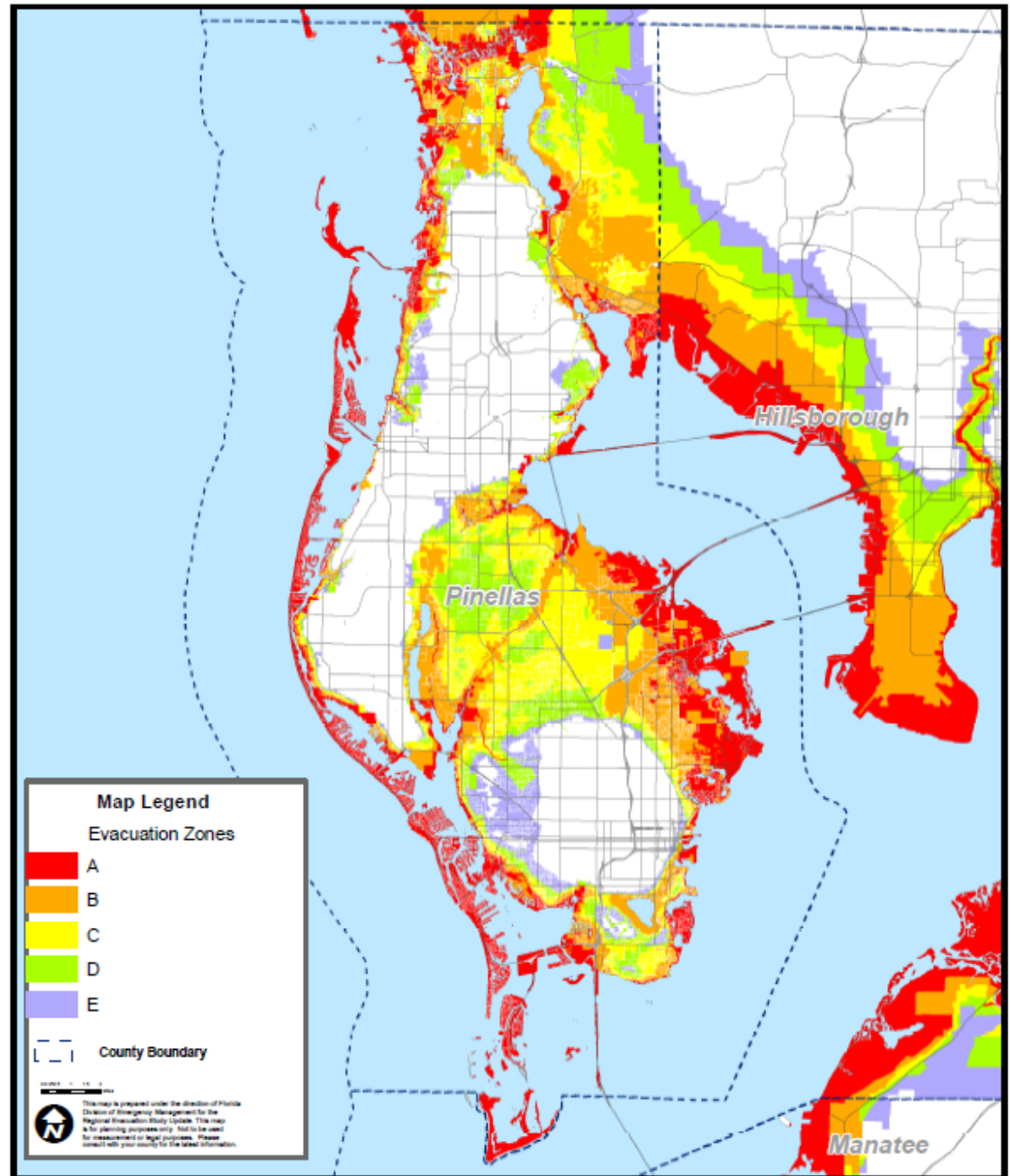
Emergency Evacuation

- Planning for Emergency Response
 - **Florida DEM & TBRPC – 2010 Statewide Regional Evacuation Study**
 - Critical infrastructure
 - I-275/I-75
 - I-275/ I-4
 - SR 580 / Veterans
 - Gandy / Selmon
 - Identification of clearance times
 - I-275 NB on ramps
 - I-4 EB on ramps

Hills. County Evacuation Zones



Pinellas County Evacuation Zones



Emergency Evacuation

Table ES-14 – 2015 Clearance Times for Operational Scenarios

	Evacuation Level A Operational Scenario	Evacuation Level B Operational Scenario	Evacuation Level C Operational Scenario	Evacuation Level D Operational Scenario	Evacuation Level E Operational Scenario
Clearance Time to Shelter					
Hillsborough	12.0	15.5	26.0	38.0	78.0
Manatee	10.0	13.0	19.0	27.0	69.5
Pasco	12.0	13.5	23.5	40.5	78.5
Pinellas	10.0	13.0	19.5	25.5	71.0
In-County Clearance Time					
Hillsborough	12.0	15.5	26.0	38.0	78.0
Manatee	11.0	14.0	20.0	33.5	73.5
Pasco	12.0	14.5	23.5	40.5	78.5
Pinellas	11.0	14.0	20.0	31.0	72.0
Out of County Clearance Time					
Hillsborough	12.0	15.5	25.5	38.0	78.0
Manatee	11.0	14.0	20.0	33.0	75.0
Pasco	11.5	14.5	26.0	37.0	78.0
Pinellas	10.5	14.0	20.0	31.0	72.0
Regional Clearance Time					
TBRPC	12.0	15.5	26.0	38.0	78.0

Table IV-16 – Evacuating Vehicles Entering Each County by Evacuation Route for the 2015 Base Scenario

	Evacuation Level A Base Scenario	Evacuation Level B Base Scenario	Evacuation Level C Base Scenario	Evacuation Level D Base Scenario	Evacuation Level E Base Scenario
Hillsborough County					
US 41 Northbound	200	1,000	6,400	12,400	19,400
I-75 Northbound	22,600	23,600	34,700	32,500	37,700
US 301 Northbound	900	2,600	4,300	8,500	8,900
SR 580 Eastbound	10,200	19,200	27,500	40,500	58,200
SR 60 Eastbound	8,300	10,800	17,800	20,600	21,700
I-275 Eastbound	52,100	63,500	79,300	97,300	76,300
US 92 Eastbound	4,500	8,400	16,400	24,400	22,400

**Pinellas Traffic Evacuating Via Gandy
In Addition to Local Evacuation & ‘Background’ Traffic**

Evacuation Level C

Figure IV-8
Critical Roadway Segments with Excessive Vehicle Queues for
2015 Base Scenario Evacuation Level C

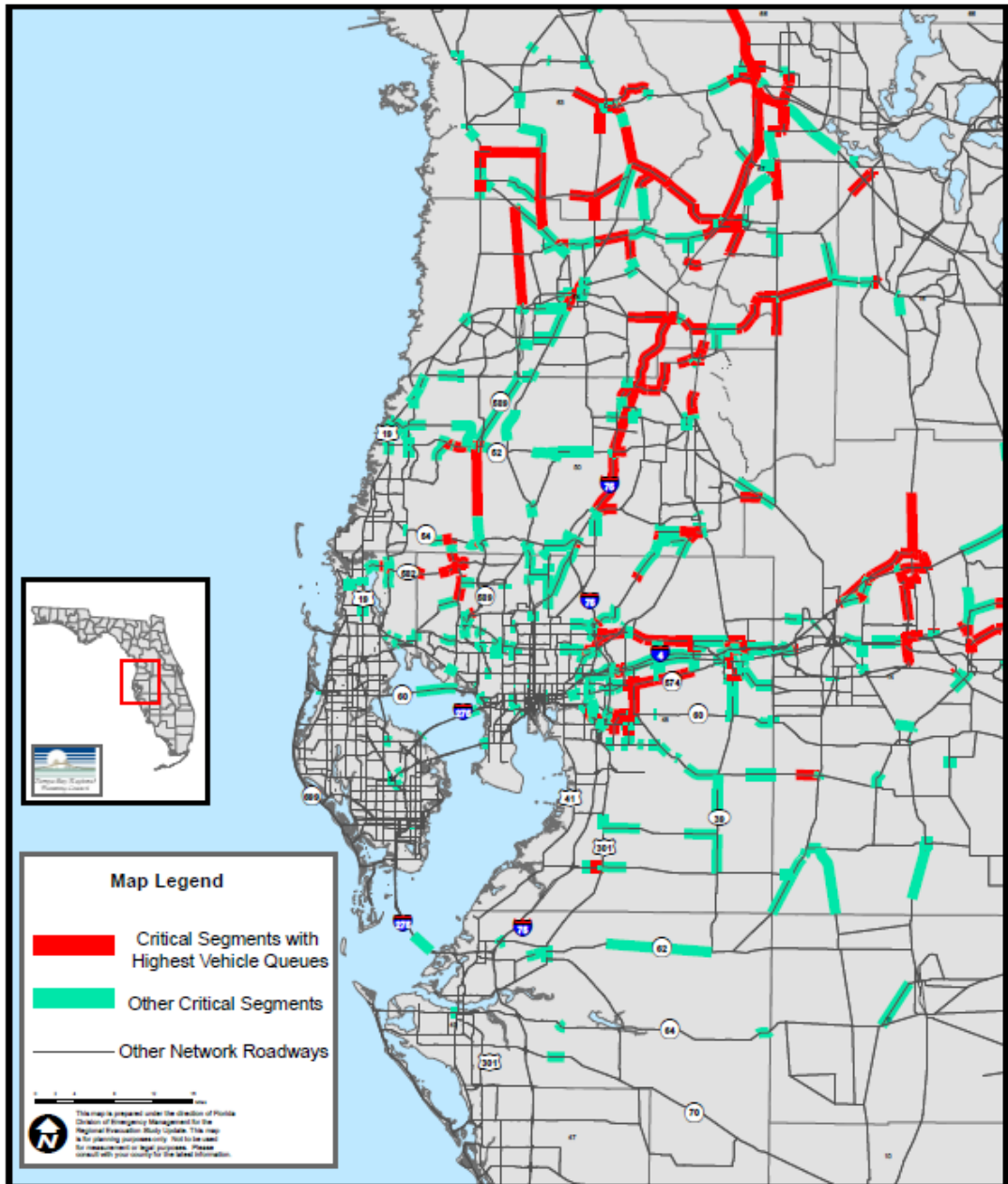




Figure IV-10
Critical Roadway Segments with Excessive Vehicle Queues for
2015 Base Scenario Evacuation Level E



Evacuation Level E

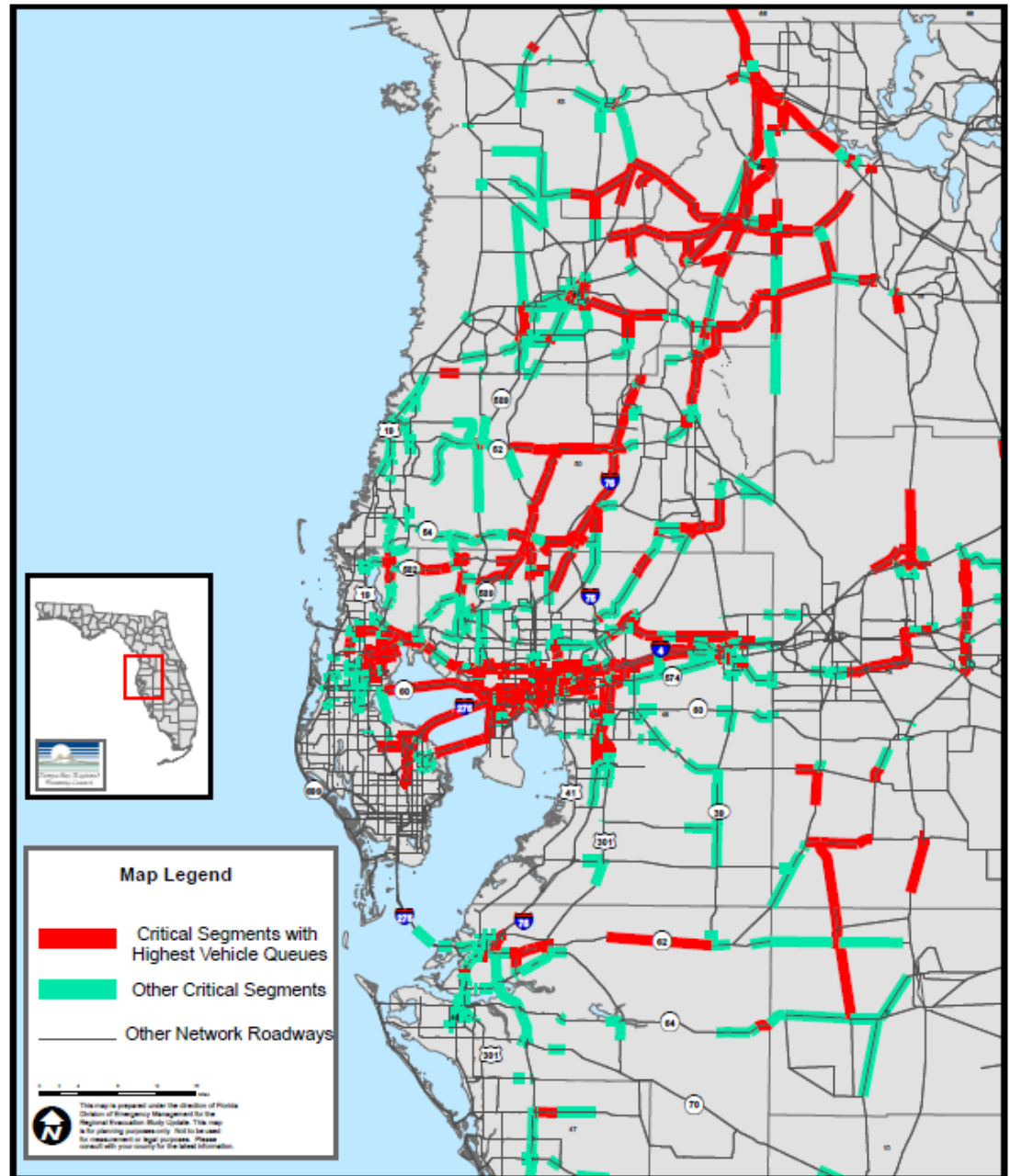
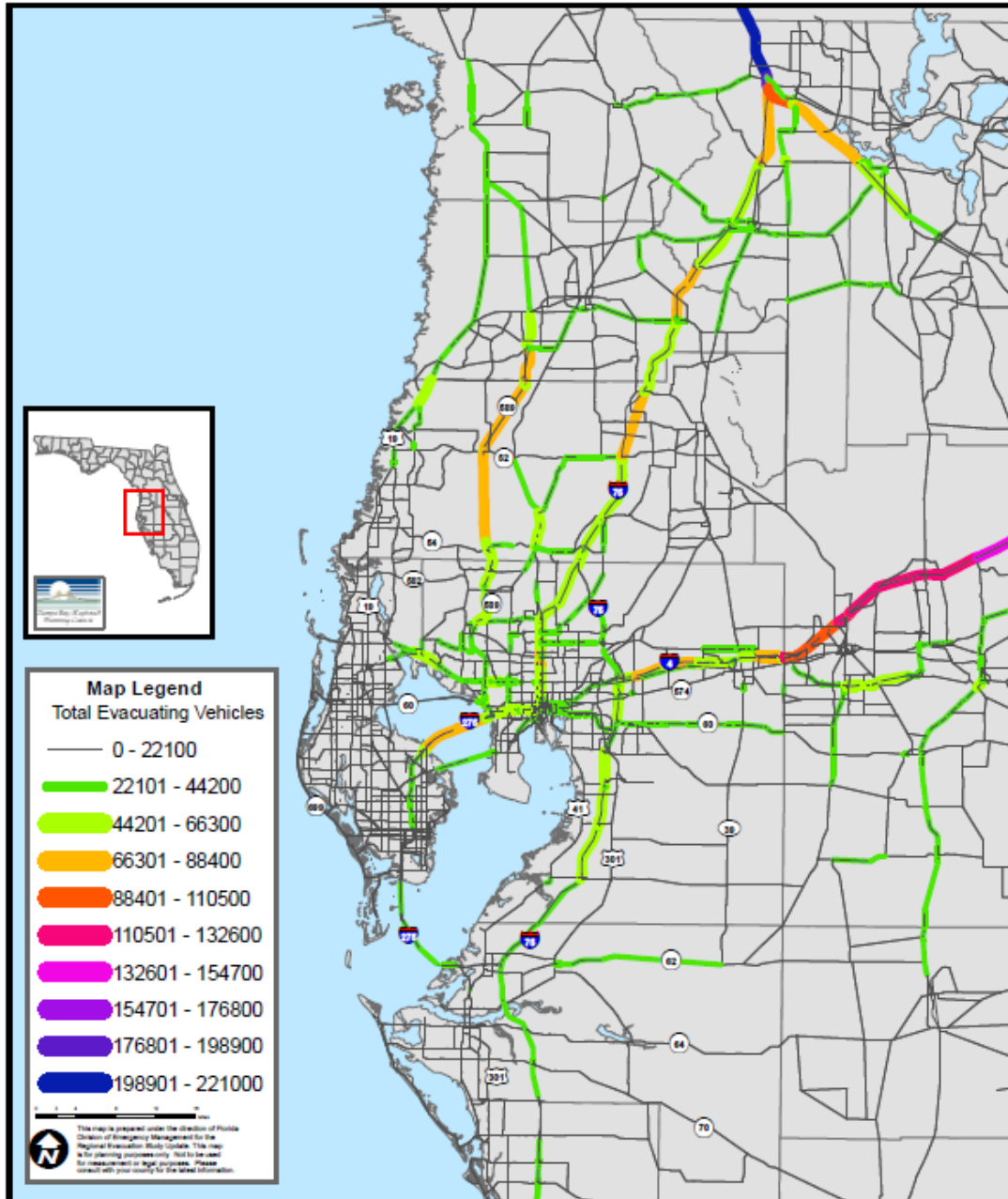




Figure F-10

Evacuation Trip Volumes for 2015 Base Senario
Evacuation Level E



Emergency Evacuation

- Emergency Response
 - Inter-county Coordination
 - What is the process for timing of evacuations?
 - What are thresholds for closing bay bridges?
 - Reverse Lane Operations