



January 11, 2011

Mr. Don Skelton
District Secretary
FDOT District 7
11201 N. McKinley Drive
Tampa, FL 33612

Mayor Joe Affronti, Sr.
City of Temple Terrace
MPO Chairman

Commissioner Mark Sharpe
Hillsborough County
MPO Vice Chairman

RE: Hillsborough MPO's 2035 LRTP Amendment for Bruce B. Downs Blvd.

Dear Mr. Skelton,

The Hillsborough County MPO approved an amendment to its 2035 Long Range Transportation Plan (LRTP) on January 4, 2011. The 30-day required public comment period for the public hearing was announced in an ad in the Tampa Tribune on December 4, 2010, followed by a 10-day ad placed on December 24, 2010.

Commissioner Kevin Beckner
Hillsborough County

Councilman Joseph Caetano
City of Tampa

Joe Lopano
Hillsborough Co. Aviation Authority

Commissioner Rick A. Lott
City of Plant City

Commissioner Lesley "Les" Miller, Jr.
Hillsborough County

Commissioner Sandra Murman
Hillsborough County

Councilman Tom Scott
City of Tampa

Councilman Curtis Stokes
HART

Joseph Waggoner
Expressway Authority

Richard Wainio
Tampa Port Authority

Derek L. Doughty (Ex-Officio)
The Planning Commission

Donald J. Skelton, P.E. (Ex-Officio)
FDOT, District Seven

Ramond A. Chiaramonte, AICP
Executive Director

The amendment to the LRTP was brought forward to reflect the widening of Bruce B. Downs Boulevard from Bearss Avenue to Palm Springs Boulevard as 6-lanes divided "plus two special-use lanes", one in each direction, to be signed and marked for bus and high occupancy vehicle (HOV) use during the peak hour. This recommendation followed a technical analysis of options for incorporating transit into the road design, and two public meetings at which the options were discussed. A summary of feedback from the public meetings was posted on our website and discussed with the MPO Board.

There were five citizen comments received through email and in-person during the 30-day comment period and at the public hearing. Concerns were expressed over the restriction of the two lanes in light of high traffic volumes and infrequent bus service. After discussion, the MPO Board voted to amend the LRTP to show the widening of Bruce B. Downs Boulevard to 8-lanes, with no restrictions on the lane use to be shown at this time. Possible designation of lanes for HOV use may be explored in coordination with agency partners and the public prior to opening the widened road to traffic. The vote to amend the LRTP was a unanimous roll-call vote.

Hillsborough County
Metropolitan Planning Organization
P.O. Box 1110
601 E. Kennedy, 18th Floor
Tampa, Florida 33601-1110
813/272-5940
FAX NO: 813/301-7172
<http://www.hillsboroughmpo.org>
e-mail: transportation@plancom.org

Attached are replacement pages of the LRTP for three maps and three spreadsheets that have changed as a result of the amendment. The cost estimate for the project has been updated per the latest available information from the implementing agency. It reflects a lower cost than previously estimated; we observe that construction bids have been coming in lower than anticipated recently. A year-of-expenditure inflation factor has not been applied, as a construction contract is

anticipated this year. The funding source has also been updated, to reflect a combination of local and federal revenues.

The 2035 Long Range Transportation Plan, including these changes, is available electronically on our website, www.mpo2035.org, under *What's in the 2035 Plan?*

If you have any questions or need further information, please feel free to contact me.

Sincerely,

A handwritten signature in cursive script that reads "Beth Alden for".

Ramond A. Chiamonte, AICP
Executive Director

Cc: Janille Smith-Colin, FDOT Government Liaison
Michael Williams, HC Public Works Design & Engineering Mgr
Jean Dorzback, Tampa Transportation Division Manager
Mary Shavalier, HART Planning Chief

attachments

Hillsborough County 2035 Long Range Transportation Plan

Adopted December 9, 2009

AMENDED August 3, 2010

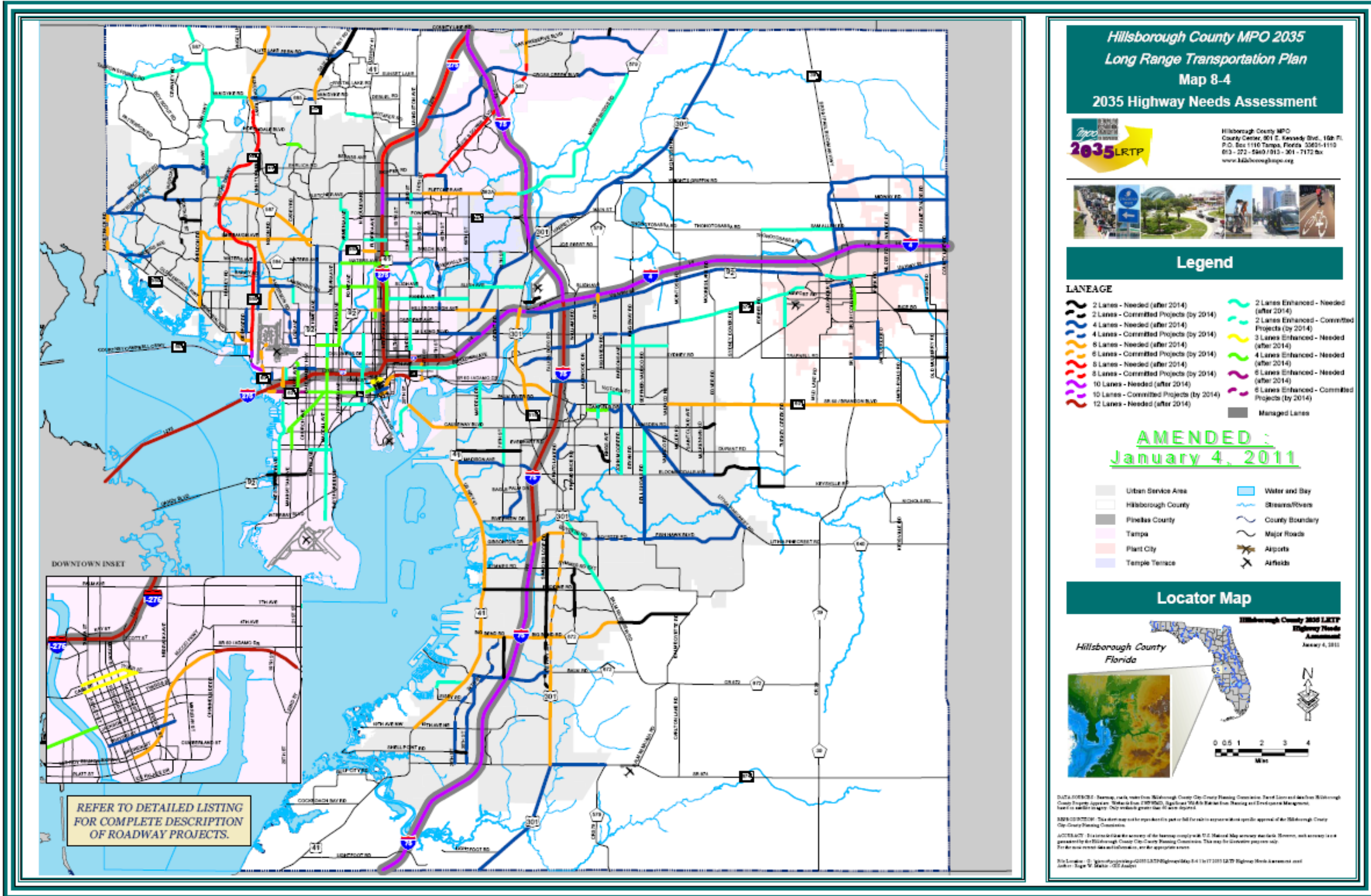
MODIFIED September 1, 2010

AMENDED January 4, 2011

Hillsborough County
Metropolitan Planning Organization
601 East Kennedy Blvd. – 18th Floor
Tampa, FL 33601
(813)-272-5940

www.hillsboroughmpo.org

The preparation of this report has been financed in part through grant(s) from the Federal Highway Administration and Federal Transit Administration, U.S. Department of Transportation, under the Metropolitan Planning Program, Section 104(f) of Title 23, U.S. Code. The contents of this report do not necessarily reflect the official views or policy of the U.S. Department of Transportation.



**Hillsborough County MPO 2035
Long Range Transportation Plan
Map 8-4
2035 Highway Needs Assessment**



Hillsborough County MPO
County Center, 301 E. Kennedy Blvd., 10th Fl.
P.O. Box 1110 Tampa, Florida 33601-1110
813 - 222 - 5940 / 813 - 301 - 7172 fax
www.hillsboroughmopo.org



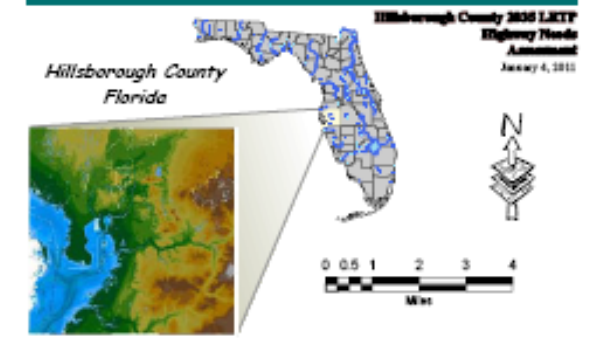
Legend

- LANEAGE**
- 2 Lanes - Needed (after 2014)
 - 2 Lanes - Committed Projects (by 2014)
 - 4 Lanes - Needed (after 2014)
 - 4 Lanes - Committed Projects (by 2014)
 - 6 Lanes - Needed (after 2014)
 - 6 Lanes - Committed Projects (by 2014)
 - 8 Lanes - Needed (after 2014)
 - 8 Lanes - Committed Projects (by 2014)
 - 10 Lanes - Needed (after 2014)
 - 10 Lanes - Committed Projects (by 2014)
 - 12 Lanes - Needed (after 2014)
 - 2 Lanes Enhanced - Needed (after 2014)
 - 2 Lanes Enhanced - Committed Projects (by 2014)
 - 3 Lanes Enhanced - Needed (after 2014)
 - 4 Lanes Enhanced - Needed (after 2014)
 - 6 Lanes Enhanced - Needed (after 2014)
 - 6 Lanes Enhanced - Committed Projects (by 2014)
 - Managed Lanes

**AMENDED :
January 4, 2011**

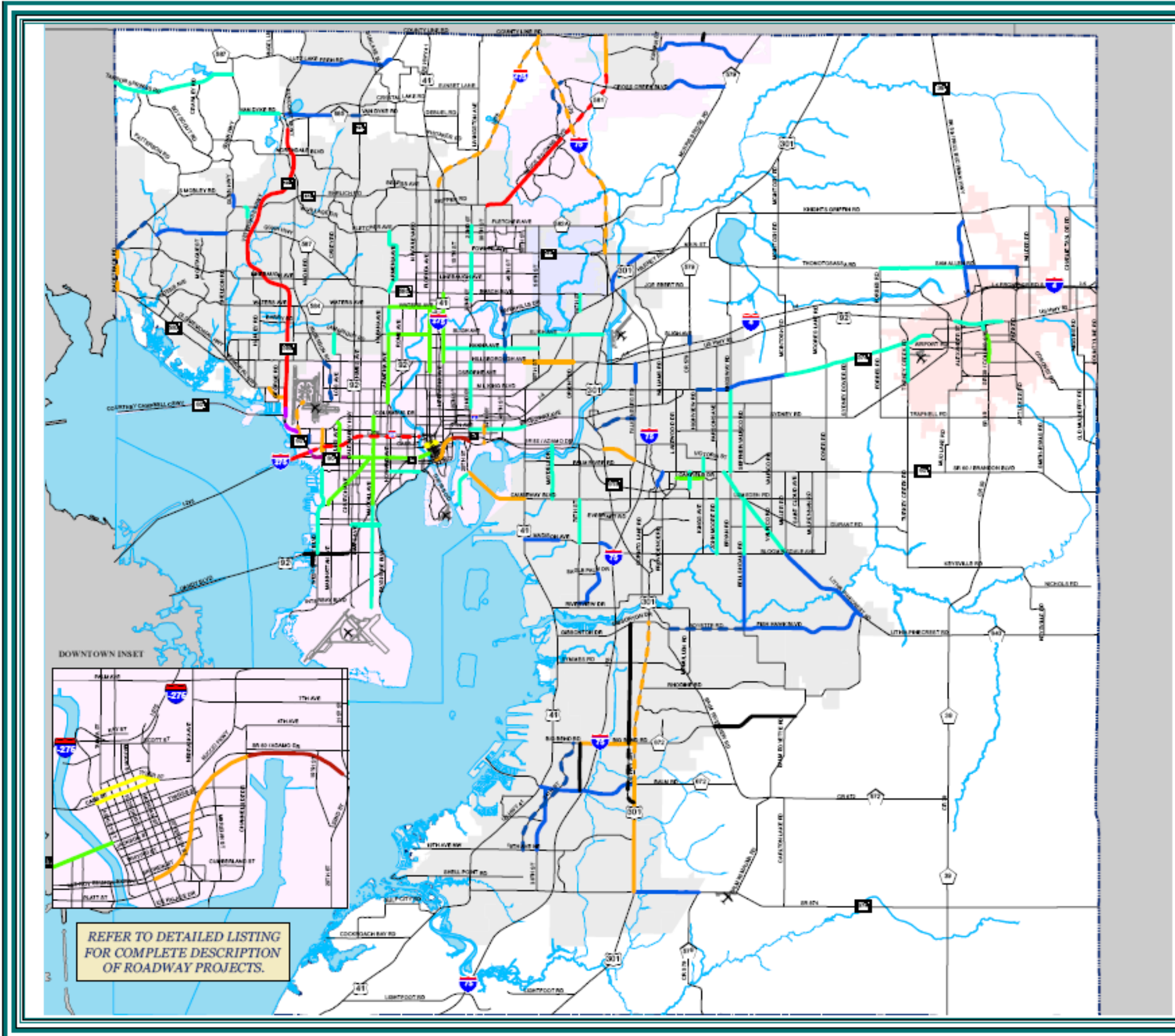
- Urban Service Area
- Hillsborough County
- Pinellas County
- Tampa
- Plant City
- Temple Terrace
- Water and Bay
- Streams/Rivers
- County Boundary
- Major Roads
- Airports
- Airfields

Locator Map



REFER TO DETAILED LISTING
FOR COMPLETE DESCRIPTION
OF ROADWAY PROJECTS.

DATA SOURCE: Roadway mile data from Hillsborough County City-County Planning Commission. Travel Data and data from Hillsborough County Planning Commission. Statistics from US Census Bureau. Signage and other data from Hillsborough County Planning Commission. This map is for informational purposes only. It is not intended to be used as a legal document. For more information, contact the Hillsborough County Planning Commission. This map is for informational purposes only. It is not intended to be used as a legal document. For more information, contact the Hillsborough County Planning Commission.



REFER TO DETAILED LISTING FOR COMPLETE DESCRIPTION OF ROADWAY PROJECTS.

**Hillsborough County MPO 2035
Long Range Transportation Plan
Map 10-4
2035 Highway Cost Affordable**



Hillsborough County MPO
County Center, 801 E. Kennedy Blvd., 16th Fl.
P.O. Box 1116 Tampa, Florida 33601-1116
813 - 272 - 5969 / 813 - 301 - 7172 fax
www.hillsboroughmopo.org



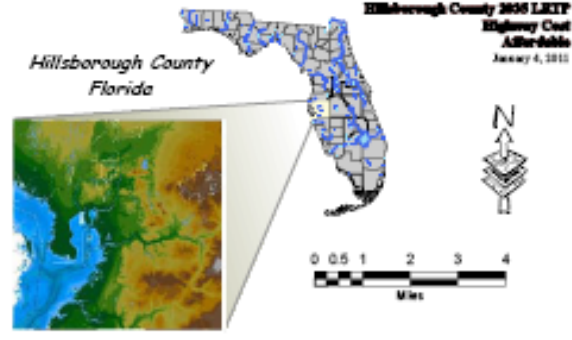
Legend

- LANEAGE**
- 2 Lanes - Planned Projects (after 2014)
 - 2 Lanes - Committed Projects (by 2014)
 - 4 Lanes - Planned Projects (after 2014)
 - 4 Lanes - Committed Projects (by 2014)
 - 6 Lanes - Planned Projects (after 2014)
 - 6 Lanes - Committed Projects (by 2014)
 - 8 Lanes - Planned Projects (after 2014)
 - 8 Lanes - Committed Projects (by 2014)
 - 10 Lanes - Planned Projects (after 2014)
 - 10 Lanes - Committed Projects (by 2014)
 - 12 Lanes - Planned Projects (after 2014)
 - 2 Lanes Enhanced - Planned Projects (after 2014)
 - 2 Lanes Enhanced - Committed Projects (by 2014)
 - 3 Lanes Enhanced - Planned Projects (after 2014)
 - 4 Lanes Enhanced - Planned Project (after 2014)
 - 6 Lanes Enhanced - Planned Projects (after 2014)
 - 6 Lanes Enhanced - Committed Projects (by 2014)

**AMENDED :
January 4, 2011**

- Urban Service Area
- Hillsborough County
- Pinellas County
- Tampa
- Plant City
- Temple Terrace
- Water and Bay
- Streams/Rivers
- County Boundary
- Major Roads
- Airports
- Airfields

Locator Map

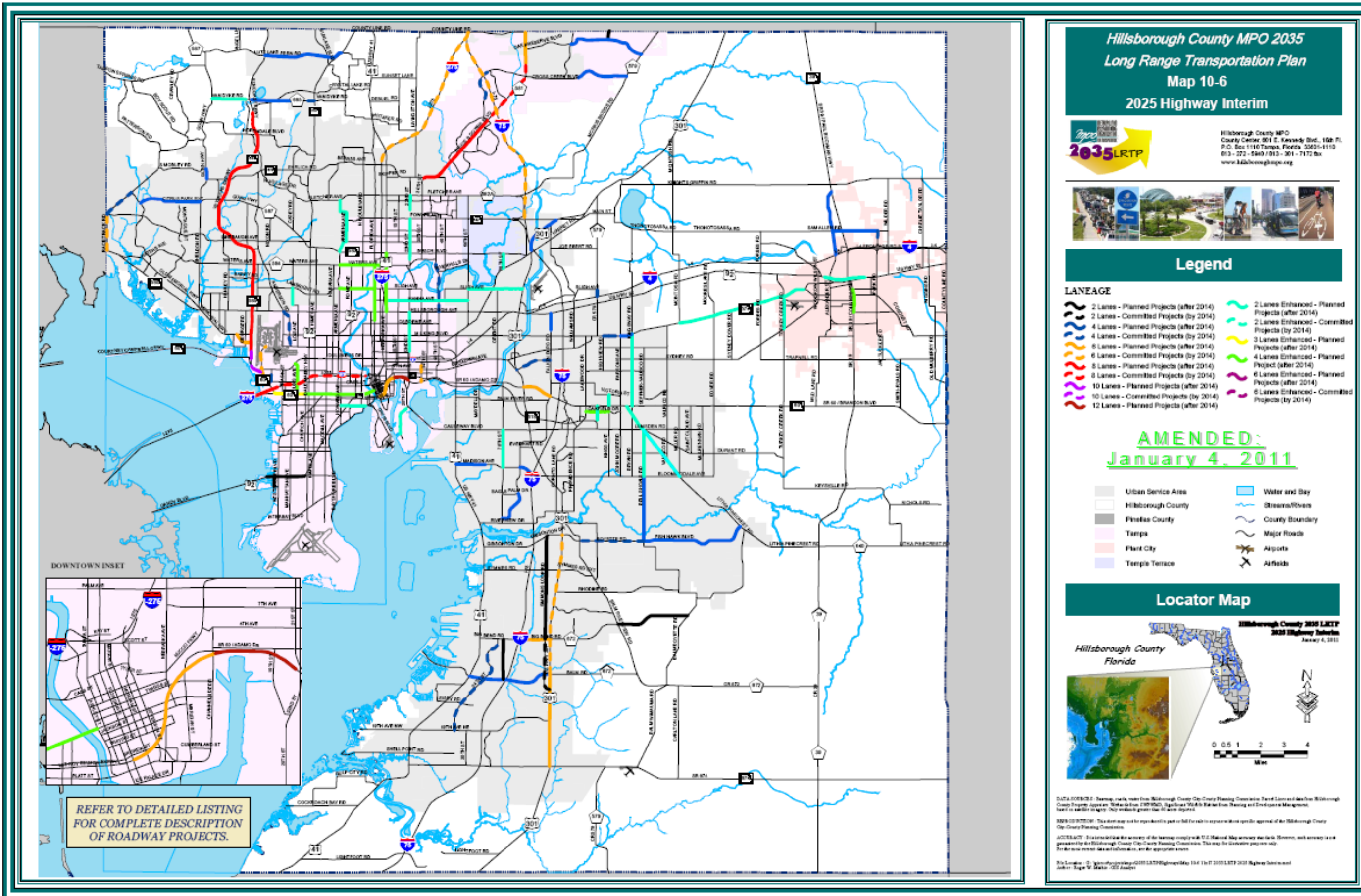


DATA SOURCE: Planning, mapping and data from Hillsborough County City-County Planning Commission, David Lamm and Associates Hillsborough County Strategic Plan and "Tampa to 2035: Significant Transportation and Environmental Management Plan" as well as agency data and other sources. Only roads greater than 30 feet are shown.

DISCLAIMER: This document is for informational purposes only and does not constitute an official approval of the Hillsborough County City-County Planning Commission.

ACCURACY: This document is the property of the planning commission. The National Map Accuracy Standards, with respect to a general purpose map, shall apply to this map. The user assumes all responsibility for the accuracy of the information.

File Location: C:\projects\mopo\2035LRTP\HighwayCostAffordable.mxd
Author: Roger W. Miller - GIS Analyst



AMENDED 1-4-2011

Map 10-6:
2025 Interim Cost Affordable
Roadway Capacity Improvements

Priority Ranking	Facility	From	To	Needs Assessment Project Description	Funding Source
1	US Hwy 301	SR 674	Balm Rd	2 Lanes Undivided to 6 Lanes Divided	Sales Tax, OA, TRIP
2	Bruce B Downs Blvd	Bearss Ave	Palm Springs Blvd	4 Lanes Divided to 8 Lanes Divided	Other 4, TMA, HC Ad Val
3	Bruce B Downs Blvd	Pebble Creek Dr	County Line Rd	4 Lanes Divided to 6 Lanes Divided	TMA, TRIP
4	Alexander St Ext	I-4	SR 39	No Existing Lanes to 4 Lanes Divided	OA
5	Cross Creek Blvd	Cory Lake Isles	Morris Bridge Rd	2 Lanes Undivided to 4 Lanes Divided	Sales Tax
6	Sam Allen Rd	Alexander St Ext	Park Rd	2 Lanes Undivided to 4 Lanes Divided	TMA
7	I-75	at I-4	Interchange	Interchange	SIS
8	I-75	Manatee County	I-4	6 Lanes of Freeway/8 Lanes of Freeway to 12 Lanes of Freeway	Unfunded
9	I-75	N of I-4	S of Fowler Ave	6 Lanes of Freeway to 6 Lanes of Freeway with 4 Special Use Lanes (Freeway)	SIS
10	I-275	W of Kennedy Ramps	Memorial Hwy Bridge	6 Lanes of Freeway to 8 Lanes of Freeway	SIS
11	Local Bus	Current Bus Services (199 Vehicles) with Non-Rev Vehicles and Modernize Maintenance Facility		Local Bus	Local Sales Tax, Local Ad Valorem, Local System Revenues, Federal Formula Based, State Transit Program
12	US Hwy 301	Tampa Bypass Canal	Fowler Ave	2 Lanes Undivided to 4 Lanes Divided	OA
13	Bayshore Blvd	MacDill AFB	Brorein St	On Road Bicycle: Re-Stripe	TE
14	Upper Tampa Bay Trail Phase IV	Peterson Rd Park	Suncoast Trail at Lutz Lake Fern Rd	Multi-Use Trail	TE, TMA
15	Regional Vanpool & Commuter Services	Current Vanpools - 80% to/from Hillsborough		Travel Demand Management	Federal STP (TMA), Sales Tax, System Revenues
16	Regional Vanpool & Commuter Services	Public Outreach & Education, Regional Program		Travel Demand Management	State Transit Program
17	SR 60 / Adamo Dr	US Hwy 301	Falkenburg Rd	4 Lanes Divided to 6 Lanes Divided	OA
18	I-275	North of Livingston	I-75	4 Lane Freeway to 6 Lane Freeway	SIS
19	South Coast Grnwy Phase II	19th Ave	Big Bend Rd	Multi-Use Trail	Developer
20	South Coast Grnwy Phase VI	Williams Park	Gardenville Park	Multi-Use Trail	TMA
21	South Coast Grnwy Phase III	Big Bend Rd	Symmes Rd	Multi-Use Trail	TMA
22	South Coast Grnwy Phase V	Madison Ave	Williams Park	Multi-Use Trail	TMA
23	Paratransit	Current Paratransit for Local Bus ADA-Complementary Service (36 Vehicles)		Paratransit	Local Sales Tax, Local Ad Valorem, Local System Revenues, Federal Formula Based, State Transit Program
24	Paratransit	Current Paratransit for Transportation Disadvantaged		Paratransit	Transportation Disadvantaged Program
25	Advanced Traffic Management System for City of Tampa			Intelligent Transportation Systems	TMA
26	South Coast Grnwy Phase I	College Ave E	19th Ave	Multi-Use Trail	Committed
27	M L King Blvd / SR 574	Parsons Ave	Kingsway	2 Lanes Undivided to 4 Lanes Divided	OA
28	M L King Blvd / SR 574	Kingsway	McIntosh Rd	2 Lanes Undivided to 4 Lanes Divided	OA
29	South Coast Grnwy Phase IV	College Ave E	Little Manatee River	Multi-Use Trail	TMA
30	MPO Data Collection & Analysis				TMA
31	Trask St	Cypress St	Boy Scout Blvd	2 Lanes Undivided to 2 Lanes with Enhancements	Unfunded
32	7th Ave	22nd St	50th St	4 Lanes Undivided to 2 Lanes with Enhancements	Sales Tax
33	22nd St	21st Ave	Hillsborough Ave	2 Lanes Undivided to 2 Lanes with Enhancements	Sales Tax
34	I-75	At Big Bend Road		Interchange	Sales Tax
35	Fletcher Ave	North Boulevard	22nd St	On Road Bicycle: Add Bicycle Lanes	TMA
36	Fletcher Ave	I-275	56th St	Pedestrian Enhancement Corridor	TE
37	56th St	Bullard Pkwy	Fowler Ave	Pedestrian Enhancement Corridor	Im Fee TT
38	I-75	At Gibsonton Drive		Interchange	Sales Tax
39	Traffic Adaptive and Incident Management System for Plant City			Intelligent Transportation Systems	Ad Val PC
40	North Boulevard	Kennedy Blvd	M L King Blvd	4 Lanes Undivided to 2 Lanes with Enhancements	Unfunded
41	Gornto Lake Rd	Brandon Town Center	SR 60	No Existing Lanes to 4 Lanes Divided	Sales Tax
42	SR 39 / James L. Redman Pkwy	Intersection improvements at		4 Lanes Divided to 4 Lanes with Enhancements	Unfunded

Funding Source:

OA = Other Arterial funds (State & Federal)

TMA = Transportation Management Area funds (Federal)

TE = Transportation Enhancement funds (Federal)

SIS = Strategic Intermodal System funds

Turnpike = Florida's Turnpike Enterprise Funds

THEA = Tampa-Hillsborough Expressway Authority funds

Sales Tax = Pending Funding Source (Hillsborough County Transportation Task Force)

System Revenues

Federal New Starts

Federal Formula-Based (FFB)

Ad Val HC = Hillsborough County Ad-Valorem

Ad Val PC = Plant City Ad-Valorem

Ad Val Ta = Tampa Ad-Valorem

Ad Val TT = Temple Terrace Ad-Valorem

Im Fee HC = Hillsborough County Impact Fee

Im Fee PC = Plant City Impact Fee

Im Fee Ta = Tampa Impact Fee

Federal STP (TMA)

State New Starts

State Transit Program

Im Fee TT = Temple Terrace Impact Fee

Developer = Private Development Requirements

TRIP = Transportation Regional Incentive Program

Other1 = State Bridge Maintenance funds

Other2 = City of Tampa Gas Tax, CIT, CRA, Utility Funds & CDBG

Other3 = future funds as identified for local match to State Transportation Regional Incentive Program

Other4 = Hillsborough County Gas Tax, CIT, CRA, Utility Funds or CDBG

Transit Planning & Design

Transportation Disadvantaged Program

Priority Ranking	Facility	From	To	Needs Assessment Project Description	Funding Source
43	22nd St	Riverhills Dr	Fowler Ave	2 Lanes Undivided to 2 Lanes with Enhancements	Sales Tax
44	Lithia Pinecrest Rd	SR 60	Lumsden Rd	2 Lanes to 4 Lanes Divided	Sales Tax (2 lanes enhanced)
45	Lithia Pinecrest Rd	Lumsden Rd	Bloomington Ave	2 Lanes to 4 Lanes Divided	Sales Tax (2 lanes enhanced)
46	Big Bend Rd	I-75	Simmons Loop Rd	4 Lanes Divided to 6 Lanes Divided	Sales Tax
47	Sam Allen Rd Ext	Park St	Wilder Rd	2 Lanes Undivided to 4 Lanes Divided	Unfunded
48	Sam Allen Rd Ext	Wilder Rd	County Line Rd	No Existing Lanes to 4 Lanes Divided	Unfunded
49	Progress Blvd	Falkenburg Rd	US Hwy 301	2 Lanes Undivided to 4 Lanes Divided	Developer
50	Van Dyke Rd	Suncoast N Ramp	Dale Mabry Hwy	2 Lanes Undivided to 4 Lanes Divided	Sales Tax
51	CR 579	I-4	Sligh Ave	2 Lanes Undivided to 6 Lanes Divided	Unfunded
52	19th Avenue & Shell Point Rd	EG Simmons Park & 32nd St	US Hwy 301 & 21st St	On Road Bicycle: Re-Stripe/Paved Shoulder	Sales Tax
53	Segments in Plant City with Sidewalks 100% Missing			Sidewalk Gap	Ad Val PC
54	Westshore Blvd	Gray St	Boy Scout Blvd	4 Lanes Divided to 6 Lanes Divided	Sales Tax
55	Lithia Pinecrest Rd	Adelaide Ave	Boyette Rd	2 Lanes Undivided to 4 Lanes Divided	Sales Tax
56	Lutz Lake Fern Rd	Suncoast Pkwy	Dale Mabry Hwy	2 Lanes Undivided to 4 Lanes Divided	Sales Tax
57	Rice Rd	Coronet Rd	County Line Rd	No Existing Lanes to 2 Lanes Undivided	Unfunded
58	Citrus Park Ext	Country Way Blvd	Sheldon Rd	No Existing Lanes to 4 Lanes Divided	Sales Tax
59	78th St	Harney Rd	Temple Terrace Hwy	2 Lanes Undivided to 2 Lanes with Enhancements	Sales Tax
60	Upper Tampa Bay Trail South	Montague	Upper Tampa Bay Park	Multi-Use Trail	Unfunded
61	I-4	50th St	County Line Rd	6 Lanes of Freeway to 6 Lanes of Freeway with 4 Special Use Lanes (Freeway)	SIS
62	I-275	Howard Frankland Bridge		Replacement & Support Transit	Other1
63	Kennedy Blvd / SR 60	Memorial Hwy	Church St	6 Lanes Divided to 6 Lanes with Enhancements	TMA
64	I-275	N of Fletcher Ave	I-75	6 Lanes of Freeway to 6 Lanes of Freeway with 2 Special Use Lanes (Freeway)	Unfunded
65	I-275	N of Fowler Ave	N of Fletcher Ave	6 Lanes of Freeway to 6 Lanes of Freeway with 2 Special Use Lanes (Freeway)	Unfunded
66	Kennedy Blvd/SR 60	Church St.	Ashley St.	4 Lanes Divided to 4 Lanes with Enhancements	TMA
67	I-75	Manatee County	Bloomington Ave	Intelligent Transportation Systems	OA
68	I-275	I-4 Interchange	S of Osborne Ave	Interchange	Unfunded
69	I-275	Ashley St	I-4 Interchange	8 Lanes of Freeway to 12 Lanes of Freeway	Unfunded
70	I-275	S of Osborne Ave	N of Fowler Ave	6 Lanes of Freeway to 10 Lanes of Freeway with 2 Special Use Lanes (Freeway)	Unfunded
71	SR 60 / Brandon Blvd	Gornto Lake Rd	Valrico Rd	On Road Bicycle: Re-Stripe	OA
72	Gandy Blvd	Pinellas County	Selmon Expressway	Intelligent Transportation Systems	OA
73	Maritime Blvd	Hookers Point	20th St	2 Lanes Undivided to 2 Lanes with Enhancements	TMA
74	Hillsborough River Greenway	Beneficial St Bridge	Palm Ave	Multi-Use Trail	TE
75	SR 674	US Hwy 41	CR 579	Pedestrian Enhancement Corridor	TMA
76	Waters Ave	Dale Mabry Hwy	22nd St	On Road Bicycle: Add Bicycle Lanes	TE
77	SR 60 / Kennedy Blvd	Henderson Blvd	Channelside Dr	Pedestrian Enhancement Corridor	TE
78	Nebraska Ave	Washington St	Kennedy Blvd	Pedestrian Enhancement Corridor	TE
79	Nebraska Ave	Fowler Ave	Florida/Nebraska	On Road Bicycle: Re-Stripe	TE
80	Dale Mabry Hwy	Bay to Bay Blvd	Columbus Dr	Pedestrian Enhancement Corridor	TMA
81	Armenia Ave	Green St	M L King Blvd	Pedestrian Enhancement Corridor	TE
82	Florida Ave	Violet	Waters Ave	4 Lanes Undivided to 4 Lanes with Enhancements	OA
83	Courtney Campbell Causeway			Intelligent Transportation Systems	OA
84	56th St	Fowler Ave	Fletcher Ave	Pedestrian Enhancement Corridor	Sales Tax

Funding Source:

OA = Other Arterial funds (State & Federal)

TMA = Transportation Management Area funds (Federal)

TE = Transportation Enhancement funds (Federal)

SIS = Strategic Intermodal System funds

Turnpike = Florida's Turnpike Enterprise Funds

THEA = Tampa-Hillsborough Expressway Authority funds

Sales Tax = Pending Funding Source (Hillsborough County Transportation Task Force)

System Revenues

Federal New Starts

Federal Formula-Based (FFB)

Ad Val HC = Hillsborough County Ad-Valorem

Ad Val PC = Plant City Ad-Valorem

Ad Val Ta = Tampa Ad-Valorem

Ad Val TT = Temple Terrace Ad-Valorem

Im Fee HC = Hillsborough County Impact Fee

Im Fee PC = Plant City Impact Fee

Im Fee Ta = Tampa Impact Fee

Federal STP (TMA)

State New Starts

State Transit Program

Im Fee TT = Temple Terrace Impact Fee

Developer = Private Development Requirements

TRIP = Transportation Regional Incentive Program

Other1 = State Bridge Maintenance funds

Other2 = City of Tampa Gas Tax, CIT, CRA, Utility Funds & CDBG

Other3 = future funds as identified for local match to State @Transportation Regional Incentive Program

Other4 = Hillsborough County Gas Tax, CIT, CRA, Utility Funds or CDBG

Transit Planning & Design

Transportation Disadvantaged Program

Priority Ranking	Facility	From	To	Needs Assessment Project Description	Funding Source
85	78th St	Madison Ave	Causeway Blvd	2 Lanes Undivided to 2 Lanes with Enhancements	TMA
86	78th St	Causeway Blvd	Lee Roy Selmon	Pedestrian Enhancement Corridor	TE
87	Nebraska	Hillsborough Ave	Busch Blvd	4 Lanes Undivided to 4 Lanes with Enhancements	TMA
88	Veterans Expwy	Courtney Campbell	Suncoast Pkwy	6 Lanes of Freeway to 8 Lanes of Freeway	Turnpike
89	High Speed Rail	Tampa to Orlando		High Speed Rail	High Speed Rail
90	Lois Ave	Henderson Blvd	Kennedy Blvd	Pedestrian Enhancement Corridor	TE
91	Fowler Ave	I-275	56th St	Pedestrian Enhancement Corridor	OA
92	SR 60	Ridgewood Ave	Valrico Rd	Pedestrian Enhancement Corridor	TE
93	Rome Ave	M L King Blvd	Waters Ave	Pedestrian Enhancement Corridor	TE
94	Hillsborough Ave	Memorial Hwy	George Rd	Pedestrian Enhancement Corridor	TE
95	Busch Blvd & Yukon St	Dale Mabry Hwy	22nd St	On Road Bicycle: Add Bicycle Lanes	TE
96	Suncoast Pkwy	Veterans Expwy	Pasco County	4 Lanes of Freeway to 6 Lanes of Freeway	Turnpike
97	Local Bus	SmartCard Implementation, Farebox Replacement, and Security Upgrades			Local Sales Tax, Federal STP (TMA)
98	Gandy Blvd (Elev. Structure)	Dale Mabry Hwy	Gandy Bridge	No Existing Lanes to 2 Lanes of Freeway	THEA
99	Short Distance Rail	Downtown Tampa to USF		Short Distance Rail	Local Sales Tax, Local System Revenues, Federal New Starts, Federal Formula Based, State New Starts, Transit Planning & Design
100	Regional Bus	I-4 & I-275 - Westshore to Lakeland		Regional Bus	Local System Revenues, Federal Formula Based, Federal STP (TMA), State Transit Program, TRIP
101	Regional Bus	I-75 - Tampa to Brooksville and Tampa to Bradenton & Sarasota		Regional Bus	Local System Revenues, Federal Formula Based, Federal STP (TMA), State Transit Program, TRIP
102	Oakfield Dr	Lakewood Dr	Kings Ave	4 Lanes Undivided to 4 Lanes with Enhancements	Im Fee HC
103	SR 39	Park Rd	Alabama St	4 Lanes Divided to 4 Lanes with Enhancements	TMA
104	Local Bus	Current Transfer Center & P'n'R Improvements, Access Improvements, Replace Bus Stops/Shelters		Local Bus	Local Sales Tax, Federal STP (TMA)
105	Local Bus	New Transfer Centers and P'n'R Facilities (7)		Local Bus	Local Sales Tax, Local System Revenues, Federal Formula Based
106	Waters Ave	Sheldon Rd	Anderson Rd	On Road Bicycle: Add Bicycle Lanes	TE
107	SR 60	I-75	Ridgewood Ave	Pedestrian Enhancement Corridor	TE
108	Lois Ave	Kennedy Blvd	Boy Scout Blvd	4 Lanes Divided to 4 Lanes with Enhancements	TE
109	Causeway Blvd	Maritime Blvd	50th St	4 Lanes Divided to 6 Lanes Divided	OA
110	30th St	Yukon St	Fowler Ave	On Road Bicycle: Add Bicycle Lanes	TE
111	Short Distance Rail	Westshore to Pinellas (center of Frankland Bridge to Westshore Blvd; service continues to Downtown Tampa)		Short Distance Rail	Local Sales Tax, Local System Revenues, Federal New Starts, Federal Formula Based, State New Starts, Transit Planning & Design
112	Nebraska Ave & Florida Ave	Hillsborough Ave	Fowler Ave	On Road Bicycle: Re-Stripe	TE
113	Short Distance Rail	USF to Wesley Chapel		Short Distance Rail	Local Sales Tax, Local System Revenues, Federal New Starts, Federal Formula Based, State New Starts, Transit Planning & Design
114	Short Distance Rail	Downtown Tampa to Airport (terminating north of Airport at Hillsborough Ave)		Short Distance Rail	Local Sales Tax, Local System Revenues, Federal New Starts, Federal Formula Based, State New Starts, Transit Planning & Design
115	Short Distance Rail	Downtown Tampa to Brandon		Short Distance Rail	Local Sales Tax, Local System Revenues, Federal New Starts, Federal Formula Based, State New Starts, Transit Planning & Design

Funding Source:

OA = Other Arterial funds (State & Federal)
 TMA = Transportation Management Area funds (Federal)
 TE = Transportation Enhancement funds (Federal)
 SIS = Strategic Intermodal System funds
 Turnpike = Florida's Turnpike Enterprise Funds
 THEA = Tampa-Hillsborough Expressway Authority funds
 Sales Tax = Pending Funding Source (Hillsborough County Transportation Task Force)
 System Revenues
 Federal New Starts
 Federal Formula-Based (FFB)

Ad Val HC = Hillsborough County Ad-Valorem
 Ad Val PC = Plant City Ad-Valorem
 Ad Val Ta = Tampa Ad-Valorem
 Ad Val TT = Temple Terrace Ad-Valorem
 Im Fee HC = Hillsborough County Impact Fee
 Im Fee PC = Plant City Impact Fee
 Im Fee Ta = Tampa Impact Fee
 Federal STP (TMA)
 State New Starts
 State Transit Program

Im Fee TT = Temple Terrace Impact Fee
 Developer = Private Development Requirements
 TRIP = Transportation Regional Incentive Program
 Other1 = State Bridge Maintenance funds
 Other2 = City of Tampa Gas Tax, CIT, CRA, Utility Funds & CDBG
 Other3 = future funds as identified for local match to State @Transportation Regional Incentive Program
 Other4 = Hillsborough County Gas Tax, CIT, CRA, Utility Funds or CDBG
 Transit Planning & Design
 Transportation Disadvantaged Program

Priority Ranking	Facility	From	To	Needs Assessment Project Description	Funding Source
116	Short Distance Rail	Airport to Carrollwood (from Hillsborough Ave to Linebaugh Ave)		Short Distance Rail	Local Sales Tax, Local System Revenues, Federal New Starts, Federal Formula Based, State New Starts, Transit Planning & Design
117	Hanley	Hillsborough Ave	Waters Ave	Pedestrian Enhancement Corridor	TE
118	Maydell Dr	Causeway Blvd	Adamo Dr	2 Lanes Undivided to 2 Lanes with Enhancements	TMA
119	Kingsway Rd	SR 60 / Brandon Blvd	M L King Blvd	2 Lanes Undivided to 2 Lanes with Enhancements	Im Fee HC
120	Gunn Hwy	Ehrlich Rd	Citrus Park Dr	2 Lanes Undivided to 2 Lanes with Enhancements	TMA
121	Bell Shoals Rd	Bloomingtondale Ave	Lithia Pinecrest Rd	2 Lanes Undivided to 2 Lanes with Enhancements	TMA
122	Hanna Ave	Nebraska Ave	56th St	2 Lanes Undivided to 2 Lanes with Enhancements	Other2
123	Manhattan Ave	Henry Ave	Sligh Ave	2 Lanes Undivided to 2 Lanes with Enhancements	Im Fee Ta
124	Local Bus	New Local Route: SR60 - Brandon Blvd (4 vehicles)		Local Bus	Local Sales Tax, Local System Revenues, Federal Formula Based, State Transit Program
125	Waters Ave	Anderson Rd	Dale Mabry Hwy	On Road Bicycle: Add Bicycle Lanes	TE
126	Kennedy Blvd / West	I-275	Ashley St	On Road Bicycle: Re-Stripe	TE
127	Dale Mabry Hwy & Himes, Lois Ave	MacDill AFB	Waters Ave	On Road Bicycle: Add Bicycle Lanes	Other2
128	Armenia Ave	Swann Ave	Hillsborough Ave	On Road Bicycle: Re-Stripe	Other2
129	Westshore Blvd	Interbay Blvd	Gandy Blvd	Pedestrian Enhancement Corridor	TE
130	Independence Pkwy	Memorial Hwy	Veterans Expwy	4 Lanes Divided to 6 Lanes Divided	Other2
131	Local Bus (System-wide)	Increase Frequency on Local Routes to 15 Minutes (100 vehicles)		Local Bus	Sales Tax, Local System Revenues, Federal Formula Based, State Transportation Program
132	Local Bus (System-wide)	Add AM & PM Trips on Express Routes (58 vehicles)		Local Bus	Sales Tax, Local System Revenues, Federal Formula Based, State Transportation Program
133	Local Bus (System-wide)	Expand Weekday and Weekend Hours (no additional vehicles)		Local Bus	Sales Tax, Local System Revenues, Federal Formula Based, State Transportation Program
134	Local Bus (System-wide)	2nd Bus Maintenance Facility		Local Bus	Local Sales Tax, Local System Revenues, Federal Formula Based
135	M L King Blvd	Mcintosh Rd	Sammonds Rd	2 Lanes Undivided to 2 Lanes with Enhancements	OA
136	Leroy Selmon Xway	Florida Ave	22nd St	4 Lanes of Freeway to 6 Lanes of Freeway	THEA
137	Sligh Ave	Armenia Ave	Florida Ave	4 Lanes Undivided to 4 Lanes with Enhancements	TMA
138	Sligh Ave	56th St	US Hwy 301	2 Lanes Undivided to 2 Lanes with Enhancements	TMA
139	Wheeler St	M L King St	Reynolds St	2 Lanes Undivided to 2 Lanes with Enhancements	TMA
140	US 301	Broadway Ave	M L King Blvd	Pedestrian Enhancement Corridor	TE
141	SR 674	US 301	CR 579/Saffold Rd	2 Lanes Undivided to 4 Lanes Divided	OA
142	Rome Ave	Cypress St	Columbus Dr	Pedestrian Enhancement Corridor	TE
143	M L King Blvd	Nebraska Ave	40th St	On Road Bicycle: Re-Stripe	TE
144	Dale Mabry Hwy	Waters Ave	Fletcher Ave	Pedestrian Enhancement Corridor	TE
145	Columbus Dr	Nebraska Ave	Broadway Ave	On Road Bicycle: Re-Stripe	TE
146	Bougainvillea St	Dale Mabry Hwy	22nd St	On Road Bicycle: Add Bicycle Lanes	TE
147	Regional Bus	Suncoast Pkwy & Vet Exwy - Westshore to Northern Counties		Regional Bus	Local System Revenues, Federal Formula Based, Federal STP (TMA), State Transit Program, TRIP
148	John Moore Rd	Bloomingtondale Ave	Lumsden Rd	2 Lanes Undivided to 2 Lanes with Enhancements	TMA
149	US Hwy 92	Garden Lane	Thonotosassa Rd	2 Lanes Undivided to 4 Lanes Divided	TMA
150	Westshore Blvd	Gandy Blvd	Beach Pkwy	2 Lanes Undivided to 2 Lanes with Enhancements	TMA
151	US Hwy 92 / Baker St	SR 600	Reynolds St	2 Lanes Undivided to 2 Lanes with Enhancements	Ad Val PC
152	West Tampa Grnwy / Boy Scout Rd	M L King Blvd	Memorial Hwy	Multi-Use Trail	TE
153	West Tampa Grnwy	Courtney Campbell Cswy	Veterans Expwy	Multi-Use Trail	TE

Funding Source:

OA = Other Arterial funds (State & Federal)

TMA = Transportation Management Area funds (Federal)

TE = Transportation Enhancement funds (Federal)

SIS = Strategic Intermodal System funds

Turnpike = Florida's Turnpike Enterprise Funds

THEA = Tampa-Hillsborough Expressway Authority funds

Sales Tax = Pending Funding Source (Hillsborough County Transportation Task Force)

System Revenues

Federal New Starts

Federal Formula-Based (FFB)

Ad Val HC = Hillsborough County Ad-Valorem

Ad Val PC = Plant City Ad-Valorem

Ad Val Ta = Tampa Ad-Valorem

Ad Val TT = Temple Terrace Ad-Valorem

Im Fee HC = Hillsborough County Impact Fee

Im Fee PC = Plant City Impact Fee

Im Fee Ta = Tampa Impact Fee

Federal STP (TMA)

State New Starts

State Transit Program

Im Fee TT = Temple Terrace Impact Fee

Developer = Private Development Requirements

TRIP = Transportation Regional Incentive Program

Other1 = State Bridge Maintenance funds

Other2 = City of Tampa Gas Tax, CIT, CRA, Utility Funds & CDBG

Other3 = future funds as identified for local match to State @Transportation Regional Incentive Program

Other4 = Hillsborough County Gas Tax, CIT, CRA, Utility Funds or CDBG

Transit Planning & Design

Transportation Disadvantaged Program

Priority Ranking	Facility	From	To	Needs Assessment Project Description	Funding Source
154	Local Bus	New Local Route: Big Bend/Balm Rd (5 vehicles)		Local Bus	Local Sales Tax, Local System Revenues, Federal Formula Based, State Transit Program
155	Bus Rapid Transit in Mixed Traffic	Nebraska-Fletcher BRT		Bus Rapid Transit in Mixed Traffic	Local Sales Tax, Local System Revenues, State Transit Program
156	Bus Rapid Transit in Mixed Traffic	Dale Mabry/Himes BRT		Bus Rapid Transit in Mixed Traffic	Local Sales Tax, Local System Revenues, State Transit Program, Other Arterials
157	Tyler St	Ashley St	Cass St	Pedestrian Enhancement Corridor	TMA
158	Cass St	Ashley St	Tyler St	Pedestrian Enhancement Corridor	TE
159	US Hwy 41	Port Sutton Rd	Causeway	On Road Bicycle: Paved Shoulders	TE
160	M L King Blvd	Tampa St	Nebraska Ave	On Road Bicycle: Re-Stripe	TE
161	M L King Blvd	Broadway Ave	Pine St	On Road Bicycle: Add Bicycle Lanes	TE
162	Howard Ave	Bayshore Blvd	Tampa Bay Blvd	On Road Bicycle: Re-Stripe	Other2
163	Florida Ave	Hillsborough Ave	Fowler Ave	On Road Bicycle: Re-Stripe	TE
164	Euclid Ave	Westshore Blvd	Bayshore Blvd	On Road Bicycle: Re-Stripe	Im Fee Ta
165	Florida Ave	Ice Palace Dr	Harrison St	Pedestrian Enhancement Corridor	TMA
166	Florida Ave	Ice Palace Dr	Hillsborough Ave	On Road Bicycle: Re-Stripe	TE
167	Waters Ave	Armenia Ave	Nebraska Ave	4 Lanes Undivided to 4 Lanes with Enhancements	TMA
168	Tampa Bay Blvd	Himes Ave	Armenia Ave	2 Lanes Undivided to 4 Lanes with Enhancements	TMA
169	Sam Allen Rd	Forbes Rd	Alexander St Ext	2 Lanes Undivided to 2 Lanes with Enhancements	TE
170	Armenia Ave	Tampa Bay Blvd	Sligh Ave	4 Lanes Undivided to 4 Lanes with Enhancements	Im Fee Ta
171	Armenia Ave	Busch Blvd	Fletcher Ave	2 Lanes Undivided to 2 Lanes with Enhancements	TMA
172	Short Distance Rail	Busch/Linebaugh Corridor West (from Airport Spur to Oldsmar)		Short Distance Rail	Local Sales Tax, Local System Revenues, Federal New Starts, Federal Formula Based, State New Starts, Transit Planning & Design
173	Short Distance Rail	Busch/Linebaugh Corridor East (from Airport Spur to Downtown-USF Rail Line)		Short Distance Rail	Unfunded
174	MacDill Ave	MacDill AFB	Bay to Bay Blvd	2 Lanes Undivided to 2 Lanes with Enhancements	TMA
175	MacDill Ave	Bay to Bay Blvd	Columbus Dr	4 Lanes Undivided to 4 Lanes with Enhancements	TMA
176	US Hwy 301	Balm Riverview	Gornton Lake Rd	On Road Bicycle: Re-Stripe	OA
177	Temple Terrace Hwy	Morris Bridge Rd	Harney Rd	Pedestrian Enhancement Corridor	TE
178	Segments in City of Tampa with Sidewalks 100% Missing			Sidewalk on one side	Other2
179	Hillsborough Ave	Westshore Blvd	Himes Ave	Pedestrian Enhancement Corridor	TE
180	Bloomingdale Ave	US Hwy 301	Bell Shoals Rd	On Road Bicycle: Re-Stripe	TE
181	SR60 / Brandon Blvd	Valrico Rd	County Line Rd	4 Lanes Divided to 6 Lanes Divided	Unfunded
182	Pauls Dr	Brandon Pkwy	SR 60	2 Lanes Undivided to 2 Lanes with Enhancements	Sales Tax
183	Kings Ave	Sr60/Brandon Blvd	Victoria St	2 Lanes Undivided to 2 Lanes with Enhancements	TMA
184	Swann Ave	Howard Ave	Bayshore Blvd	2 Lanes Undivided to 2 Lanes with Enhancements	Im Fee Ta
185	Bus Rapid Transit In Mixed Traffic	Florida Ave BRT		Bus Rapid Transit in Mixed Traffic	Local Sales Tax, Local System Revenues, State Transit Program, Other Arterials
186	US Hwy 301	Manatee County	SR 674	2 Lanes Undivided to 4 Lanes Divided	OA
187	SR 60 (SB Interchange)	I-275	Spruce St	Interchange	SIS
188	SR 60 (NB Interchange)	I-275	Spruce St	Interchange	SIS
189	Local Bus	New Express Route: University Area to Westshore (2 vehicles)		Local Bus	Local Sales Tax, Local System Revenues, Federal Formula Based, State Transit Program
190	Local Bus	New Express Route: Brandon to Westshore (3 vehicles)		Local Bus	Local Sales Tax, Local System Revenues, Federal Formula Based, State Transit Program

Funding Source:

OA = Other Arterial funds (State & Federal)

TMA = Transportation Management Area funds (Federal)

TE = Transportation Enhancement funds (Federal)

SIS = Strategic Intermodal System funds

Turnpike = Florida's Turnpike Enterprise Funds

THEA = Tampa-Hillsborough Expressway Authority funds

Sales Tax = Pending Funding Source (Hillsborough County Transportation Task Force)

System Revenues

Federal New Starts

Federal Formula-Based (FFB)

Ad Val HC = Hillsborough County Ad-Valorem

Ad Val PC = Plant City Ad-Valorem

Ad Val Ta = Tampa Ad-Valorem

Ad Val TT - Temple Terrace Ad-Valorem

Im Fee HC = Hillsborough County Impact Fee

Im Fee PC = Plant City Impact Fee

Im Fee Ta = Tampa Impact Fee

Federal STP (TMA)

State New Starts

State Transit Program

Im Fee TT = Temple Terrace Impact Fee

Developer = Private Development Requirements

TRIP = Transportation Regional Incentive Program

Other1 = State Bridge Maintenance funds

Other2 = City of Tampa Gas Tax, CIT, CRA, Utility Funds & CDBG

Other3 = future funds as identified for local match to State @Transportation Regional Incentive Program

Other4 = Hillsborough County Gas Tax, CIT, CRA, Utility Funds or CDBG

Transit Planning & Design

Transportation Disadvantaged Program

Priority Ranking	Facility	From	To	Needs Assessment Project Description	Funding Source
191	Local Bus	New Express Route: Plant City to Downtown Tampa (2 vehicles)		Local Bus	Local Sales Tax, Local System Revenues, Federal Formula Based, State Transit Program
192	Local Bus	New Express Route: US 301/South County (4 vehicles)		Local Bus	Local Sales Tax, Local System Revenues, Federal Formula Based, State Transit Program
193	Local Bus	New Express Route: Apollo Beach/Gibson to MacDill AFB (3 vehicles)		Local Bus	Local Sales Tax, Local System Revenues, Federal Formula Based, State Transit Program
194	Bus Rapid Transit in Mixed Traffic	SR 60/Brandon BRT		Bus Rapid Transit in Mixed Traffic	Local Sales Tax, Local System Revenues, State Transit Program, Other Arterials
195	Bus Rapid Transit in Mixed Traffic	Kennedy to Airport BRT		Bus Rapid Transit in Mixed Traffic	Unfunded
196	Local Bus	New Local Route: Bloomingdale/Lithia-Pinecrest (4 vehicles)		Local Bus	Local Sales Tax, Local System Revenues, Federal Formula Based, State Transit Program
197	Zack St	Ashley St	Nebraska Ave	Pedestrian Enhancement Corridor	Other2
198	Tampa St	Brorein St	Harrison St	Pedestrian Enhancement Corridor	TMA
199	Polk St	Ashley St	Jefferson St	Pedestrian Enhancement Corridor	Other2
200	Platt/Channelside	Ashley St	Florida Ave	Pedestrian Enhancement Corridor	TMA
201	Pierce St	Whiting St	Cass St	Pedestrian Enhancement Corridor	TMA
202	Palm Ave	Florida Ave	22nd St	Pedestrian Enhancement Corridor	TMA
203	Morgan St	Ice Palace Dr	Harrison St	Pedestrian Enhancement Corridor	Other2
204	Jefferson St	Ice Palace Dr	Scott St	On Road Bicycle: Re-Stripe	Other2
205	Jackson St	Ashley St	Meridian St	Pedestrian Enhancement Corridor	TMA
206	Ice Palace Dr	Franklin St	Gunn St	Pedestrian Enhancement Corridor	TMA
207	Harrison St	Tampa St	Franklin St	Pedestrian Enhancement Corridor	TMA
208	Florida Ave	Harrison St	Lake Ave S	Pedestrian Enhancement Corridor	Other2
209	Brorein St	Tampa St	Jefferson St	Pedestrian Enhancement Corridor	TE
210	Ashley St	Channelside Dr	Tyler St	Pedestrian Enhancement Corridor	TE
211	Ashley St	Channelside Dr	I-275	On Road Bicycle: Re-Stripe	Other2
212	Van Dyke Rd	Gunn Hwy	Tobacco Rd	2 Lanes Undivided to 2 Lanes with Enhancements	TMA
213	Westshore Blvd & Trask St.	Kennedy Blvd	Boy Scout Blvd	On Road Bicycle: Add Bicycle Lanes	TMA
214	Westshore Blvd	Tampa Bay Blvd	Hillsborough Ave	On Road Bicycle: Add Bicycle Lanes	TMA
215	Valrico Rd	Lithia Pinecrest Rd	SR 60	On Road Bicycle: Paved Shoulders	TMA
216	US Hwy 41	Causeway	Adamo Dr/SR 60	On Road Bicycle: Add Bicycle Lanes	OA
217	Twigg's St	Ashley St	Channelside Dr	On Road Bicycle: Re-Stripe	Unfunded
218	Tarpon Springs Rd	Pinellas County	Gunn Hwy	2 Lanes Undivided to 2 Lanes with Enhancements	TMA
219	SR 60 / Adamo Dr	Channelside Dr	39th St	On Road Bicycle: Add Bicycle Lanes	OA
220	Memorial Hwy	Kennedy Blvd	Courtney Campbell Cswy	On Road Bicycle: Marked Route	OA
221	Lumsden Rd	Kings Ave	Lithia Pinecrest	On Road Bicycle: Re-Stripe	TMA
222	Lumsden Rd	Lithia Pinecrest	Dover Rd	On Road Bicycle: Paved Shoulders	TMA
223	Hillsborough Ave & Henry St. & Giddens St.	Central Ave	56th St	On Road Bicycle: Marked Route	TMA
224	Henderson Rd	Linebaugh Ave	Gunn Hwy	On Road Bicycle: Add Bicycle Lanes	TMA
225	Gunn Hwy	N Mobley Rd	Sheldon Rd	On Road Bicycle: Paved Shoulders	TE
226	Gunn Hwy	Citrus Park Dr	Henderson Rd	On Road Bicycle: Add Bicycle Lanes	TMA
227	Columbus Dr	Tampa St	Nebraska Ave	On Road Bicycle: Marked Route	TMA
228	Bloomingdale Ave	Bell Shoals Rd	Cade Ln	On Road Bicycle: Add Bicycle Lanes	TMA
229	Bearss Ave	Dale Mabry Hwy	22nd St	On Road Bicycle: Add Bicycle Lanes	TMA
230	Armenia Ave	Hillsborough Ave	Fletcher Ave	On Road Bicycle: Paved Shoulders	TMA

Funding Source:

OA = Other Arterial funds (State & Federal)
 TMA = Transportation Management Area funds (Federal)
 TE = Transportation Enhancement funds (Federal)
 SIS = Strategic Intermodal System funds
 Turnpike = Florida's Turnpike Enterprise Funds
 THEA = Tampa-Hillsborough Expressway Authority funds
 Sales Tax = Pending Funding Source (Hillsborough County Transportation Task Force)
 System Revenues
 Federal New Starts
 Federal Formula-Based (FFB)

Ad Val HC = Hillsborough County Ad-Valorem
 Ad Val PC = Plant City Ad-Valorem
 Ad Val Ta = Tampa Ad-Valorem
 Ad Val TT - Temple Terrace Ad-Valorem
 Im Fee HC = Hillsborough County Impact Fee
 Im Fee PC = Plant City Impact Fee
 Im Fee Ta = Tampa Impact Fee
 Federal STP (TMA)
 State New Starts
 State Transit Program

Im Fee TT = Temple Terrace Impact Fee
 Developer = Private Development Requirements
 TRIP = Transportation Regional Incentive Program
 Other1 = State Bridge Maintenance funds
 Other2 = City of Tampa Gas Tax, CIT, CRA, Utility Funds & CDBG
 Other3 = future funds as identified for local match to State Transportation Regional Incentive Program
 Other4 = Hillsborough County Gas Tax, CIT, CRA, Utility Funds or CDBG
 Transit Planning & Design
 Transportation Disadvantaged Program

Priority Ranking	Facility	From	To	Needs Assessment Project Description	Funding Source
231	56th St	Riverhills Dr	Serena	On Road Bicycle: Add Bicycle Lanes	OA
232	30th St	M L King Blvd	Sligh Ave	On Road Bicycle: Add Bicycle Lanes	TMA
233	South Tampa Greenway	Friendship Trail, MacDill	Bayshore Blvd	Multi-Use Trail	TMA
234	Benjamin Rd	Hillsborough Ave	Waters Ave	2 Lanes Undivided to 4 Lanes Divided	Unfunded
235	Short Distance Rail	Downtown Tampa to South Tampa		Short Distance Rail	Local Sales Tax, Local System Revenues, New Starts, Federal Formula Based, State New Starts, Transit Planning & Design
236	Long Distance Rail	Brooksville to Tampa and Land O'		Long Distance Rail	Unfunded
237	Long Distance Rail	Bradenton to Tampa & Sun City		Long Distance Rail	Unfunded
238	Travel Demand Management	Vanpool Expansion - 60%		Travel Demand Management	Unfunded
239	7th Ave	Nebraska Ave	22nd St	Pedestrian Enhancement Corridor	TE
240	Local Bus	New Circulator Route: Westshore (3 vehicles)		Local Bus	Local Sales Tax, Local System Revenues, Federal Formula Based, State Transit Program
241	Local Bus	New Express Route: Brandon to USF (2 vehicles)		Local Bus	Local Sales Tax, Local System Revenues, Federal Formula Based, State Transit Program
242	Local Bus	New Local Route: Thonatosassa (4 vehicles)		Local Bus	Local Sales Tax, Local System Revenues, Federal Formula Based, State Transit Program
243	Hillsborough Ave	50th St	Orient Rd	4 Lanes Divided to 6 Lanes Divided	OA
244	Euclid Ave	Dale Mabry Hwy	Bayshore Blvd	2 Lanes Undivided to 2 Lanes with Enhancements	Im Fee Ta
245	Madison Ave	US 41	66th St.	2 Lanes Undivided to 4 Lanes Divided	Developer
246	Madison Ave	66th St.	78th St	2 Lanes Undivided to 4 Lanes Divided	Unfunded
247	Anderson Rd	Sligh Ave	Linebaugh Ave	4 Lanes Divided to 6 Lanes Divided	Unfunded
248	Local Bus	New Local Route: Bearss/Ehrlich (5 vehicles)		Local Bus	Local Sales Tax, Local System Revenues, Federal Formula Based, State Transit Program
249	Henderson Blvd	Bay To Bay Blvd	Lois Ave	4 Lanes Undivided to 4 Lanes with Enhancements	TMA
250	Henderson Blvd	Lois Ave	Kennedy Blvd	4 Lanes Undivided to 4 Lanes with Enhancements	Im Fee Ta
251	Henderson Blvd	Lois Ave	Kennedy Blvd	Pedestrian Enhancement Corridor	TE
252	Palm River (North) Bypass Canal Connector	Mckay Bay Greenway	Bypass Canal	Multi-Use Trail	TE
253	US Hwy 92	Park Rd	County Line Rd	2 Lanes Undivided to 4 Lanes Divided	OA
254	Morris Bridge Rd	I-75	Cross Creek Blvd	2 Lanes Undivided to 2 Lanes with Enhancements	Unfunded
255	US Hwy 41	19th Ave Ne	Madison Ave	4 Lanes Divided to 6 Lanes Divided	OA
256	Temple Terrace Multi-Use Trail	Temple Terrace Hwy	Railroad Park	Multi-Use Trail	TE
257	Westshore Blvd	Interbay Blvd	Gandy Blvd	On Road Bicycle: Paved Shoulders	Unfunded
258	Symmies Rd	Us Hwy 41	US Hwy 301	Pedestrian Enhancement Corridor	Unfunded
259	Mckay Bay Greenway	Trail Loop Around Mckay Bay		Multi-Use Trail	Unfunded
260	Manhattan Ave	Interbay Blvd	Gandy Blvd	On Road Bicycle: Add Bicycle Lanes	Unfunded
261	M L King Blvd	Westshore Blvd	Tampa St	On Road Bicycle: Marked Route	Unfunded
262	Interbay Blvd	Westshore Blvd	Bayshore Blvd S	On Road Bicycle: Add Bicycle Lanes	Unfunded
263	Henderson Rd	Waters Ave	Linebaugh Ave	On Road Bicycle: Add Bicycle Lanes	Unfunded
264	Gandy Blvd	Westshore Blvd	Bayshore Blvd	On Road Bicycle: Add Bicycle Lanes	Unfunded
265	Fletcher Ave	Dale Mabry Hwy	North Boulevard	On Road Bicycle: Add Bicycle Lanes	Unfunded
266	Columbus Dr	Dale Mabry Hwy	Tampa St	On Road Bicycle: Marked Route	TMA
267	Sheldon Rd	Memorial Hwy	Linebaugh Ave	4 Lanes Divided to 6 Lanes Divided	Unfunded
268	22nd St	Rowlett Park	Fowler Ave	On Road Bicycle: Paved Shoulders	Unfunded
269	40th St	Yukon St	Busch Blvd	Pedestrian Enhancement Corridor	Unfunded

Funding Source:

OA = Other Arterial funds (State & Federal)
 TMA = Transportation Management Area funds (Federal)
 TE = Transportation Enhancement funds (Federal)
 SIS = Strategic Intermodal System funds
 Turnpike = Florida's Turnpike Enterprise Funds
 THEA = Tampa-Hillsborough Expressway Authority funds
 Sales Tax = Pending Funding Source (Hillsborough County Transportation Task Force)
 System Revenues
 Federal New Starts
 Federal Formula-Based (FFB)

Ad Val HC = Hillsborough County Ad-Valorem
 Ad Val PC = Plant City Ad-Valorem
 Ad Val Ta = Tampa Ad-Valorem
 Ad Val TT = Temple Terrace Ad-Valorem
 Im Fee HC = Hillsborough County Impact Fee
 Im Fee PC = Plant City Impact Fee
 Im Fee Ta = Tampa Impact Fee
 Federal STP (TMA)
 State New Starts
 State Transit Program

Im Fee TT = Temple Terrace Impact Fee
 Developer = Private Development Requirements
 TRIP = Transportation Regional Incentive Program
 Other1 = State Bridge Maintenance funds
 Other2 = City of Tampa Gas Tax, CIT, CRA, Utility Funds & CDBG
 Other3 = future funds as identified for local match to State
 Other4 = Hillsborough County Gas Tax, CIT, CRA, Utility Funds or CDBG
 Transit Planning & Design
 Transportation Disadvantaged Program

Priority Ranking	Facility	From	To	Needs Assessment Project Description	Funding Source
270	Dale Mabry Frt Rd E/W	Van Dyke Rd	US Hwy 41	No Existing Lanes to 2 Lanes Undivided	OA
271	Bus Rapid Transit in Mixed Traffic	Gunn Hwy/Busch Blvd BRT		Bus Rapid Transit in Mixed Traffic	Local Sales Tax, Local System Revenues, State Transit Program, Other Arterials
272	Wheeler St	Parsons Ave	Valrico Rd	2 Lanes Undivided to 2 Lanes with Enhancements	Unfunded
273	Local Bus	New Circulator Route: Downtown Tampa (2 vehicles)		Local Bus	Local Sales Tax, Local System Revenues, Federal Formula Based, State Transit Program
274	Local Bus	New Circulator Route: Plant City (2 vehicles)		Local Bus	Local Sales Tax, Local System Revenues, Federal Formula Based, State Transit Program
275	Bus Rapid Transit in Mixed Traffic	East-West BRT		Bus Rapid Transit in Mixed Traffic	Local Sales Tax, Local System Revenues, State Transit Program, Other Arterials
276	Bus Rapid Transit in Mixed Traffic	University Area Transit Center to	New Tampa BRT	Bus Rapid Transit in Mixed Traffic	Unfunded
277	Whiting St	Ashley Dr	Morgan St	4 Lanes Undivided to 4 Lanes Divided	Unfunded
278	Miller Mac Rd	Gulf and Sea Blvd	US 41	2 Lanes Undivided to 2 Lanes with Enhancements	Unfunded
279	Advanced Traffic Management System for Hillsborough County			Intelligent Transportation Systems	TMA
280	Lithia Pinecrest Rd	Bloomingdale Ave	Adelaide Ave	2 Lanes Undivided to 4 Lanes Divided	Developer
281	Selmon Greenway	Hillsborough River	Meridian St	Multi-Use Trail	THEA
282	Selmon Greenway	Meridian St	22nd St	Multi-Use Trail	OA
283	New E/W Road (New Tampa)	I-275	Commerce Park Blvd	No Existing Lanes to 4 Lanes Divided	Unfunded
284	W. Virginia / W. Orient	Westshore Blvd	Tampa St	On Road Bicycle: Marked Route	Unfunded
285	Big Bend Rd	Summerfield Blvd	Balm Riverview	2 Lanes Undivided to 6 Lanes Divided	Unfunded
286	South Tampa Grnwy/Friendship Trail	Tyson	Interbay Blvd	Multi-Use Trail	Unfunded
287	South Tampa Grnwy	Westshore Blvd	Gandy to El Prado	Multi-Use Trail	Unfunded
288	Long Distance Rail	Lakeland to Tampa & Plant City		Long Distrance Rail	Unfunded
289	Big Bend Rd	US 41	Covington Garden	4 Lanes Divided to 6 Lanes Divided	Unfunded
290	Big Bend Rd	Covington Garden	I-75	4 Lanes Divided to 6 Lanes Divided	Developer
291	Big Bend Rd	Simmons Loop Rd	US 301	4 Lanes Divided to 6 Lanes Divided	Developer
292	Big Bend Rd	US 301	Summerfield Blvd	4 Lanes Divided to 6 Lanes Divided	Unfunded
293	Manhattan Ave	Euclid Ave	Henderson Rd	4 Lanes Undivided to 4 Lanes with Enhancements	Unfunded
294	Falkenburg Rd	Bryan Rd	Hillsborough Ave	2 Lanes Undivided to 4 Lanes Divided	Developer
295	Habana Ave	Main St	M L King Blvd	Pedestrian Enhancement Corridor	Unfunded
296	Gandy Blvd	Dale Mabry Hwy	Bayshore Blvd	Pedestrian Enhancement Corridor	Unfunded
297	Orient Rd	Broadway Ave	Hillsborough Ave	2 Lanes Undivided to 4 Lanes Divided	Unfunded
298	Linebaugh Ave	North Boulevard	Nebraska Ave	2 Lanes Undivided to 2 Lanes with Enhancements	Unfunded
299	Harney Rd	56th St	Temple Terrace Hwy	2 Lanes Undivided to 4 Lanes Divided	Unfunded
300	Gunn Hwy	Citrus Park Dr	Dale Mabry Overpass	4 Lanes Divided to 6 Lanes Divided	Unfunded
301	Gunn Hwy	S Mobley Rd	Sheldon Rd	2 Lanes Undivided to 4 Lanes Divided	Unfunded
302	Crenshaw Lake Rd	Simmons Rd	US Hwy 41	2 Lanes Undivided to 2 Lanes with Enhancements	Unfunded
303	Commerce St	Picnic Island P	Interbay Blvd	Pedestrian Enhancement Corridor	Unfunded
304	Cleveland St	Willow Ave	Plant Ave	Pedestrian Enhancement Corridor	Unfunded
305	Palm River Rd	78th St	Falkenburg Rd	2 Lanes Divided to 4 Lanes Divided	Unfunded
306	Victoria St	Kings Ave	Parsons Ave	2 Lanes Undivided to 2 Lanes with Enhancements	Unfunded
307	US Hwy 301	Crosstown W Ramp	I-4	4 Lanes Divided to 6 Lanes Divided	Unfunded
308	Race Track Rd	Hillsborough Ave	Linebaugh Ave	On Road Bicycle: Add Bicycle Lanes	Unfunded
309	Race Track Rd	Linebaugh Ave	Gunn Hwy	On Road Bicycle: Add Bicycle Lanes	Unfunded
310	Lambright Rd	Dale Mabry Hwy	Armenia Ave	On Road Bicycle: Re-Stripe	Unfunded
311	39th/40th St	Hillsborough Ave	Busch Blvd	On Road Bicycle: Add Bicycle Lanes	Unfunded

Funding Source:

OA = Other Arterial funds (State & Federal)

TMA = Transportation Management Area funds (Federal)

TE = Transportation Enhancement funds (Federal)

SIS = Strategic Intermodal System funds

Turnpike = Florida's Turnpike Enterprise Funds

THEA = Tampa-Hillsborough Expressway Authority funds

Sales Tax = Pending Funding Source (Hillsborough County Transportation Task Force)

System Revenues

Federal New Starts

Federal Formula-Based (FFB)

Ad Val HC = Hillsborough County Ad-Valorem

Ad Val PC = Plant City Ad-Valorem

Ad Val Ta = Tampa Ad-Valorem

Ad Val TT = Temple Terrace Ad-Valorem

Im Fee HC = Hillsborough County Impact Fee

Im Fee PC = Plant City Impact Fee

Im Fee Ta = Tampa Impact Fee

Federal STP (TMA)

State New Starts

State Transit Program

Im Fee TT = Temple Terrace Impact Fee

Developer = Private Development Requirements

TRIP = Transportation Regional Incentive Program

Other1 = State Bridge Maintenance funds

Other2 = City of Tampa Gas Tax, CIT, CRA, Utility Funds & CDBG

Other3 = future funds as identified for local match to State @Transportation Regional Incentive Program

Other4 = Hillsborough County Gas Tax, CIT, CRA, Utility Funds or CDBG

Transit Planning & Design

Transportation Disadvantaged Program

Priority Ranking	Facility	From	To	Needs Assessment Project Description	Funding Source
312	Travel Demand Management	Public Outreach & Education, Downtown Tampa		Travel Demand Management	State Transit Program
313	Travel Demand Management	Public Outreach & Education, University Area		Travel Demand Management	State Transit Program
314	Travel Demand Management	Public Outreach & Education, Westshore Business District		Travel Demand Management	State Transit Program
315	Streetcar	Streetcar Extension to Polk St with expanded service hours and frequency		Streetcar	Local Ad Valorem, Local System Revenues, Federal Formula Based
316	Kennedy Blvd / SR 60	Ashley St	Channelside Dr	On Road Bicycle: Re-Stripe	Unfunded
317	Hillsborough Ave	Pinellas County	Frontage Rd	On Road Bicycle: Paved Shoulders	Unfunded
318	39th/40th St	Adamo Dr	Hillsborough Ave	On Road Bicycle: Re-Stripe	Unfunded
319	15th St	Fowler Ave	Fletcher Ave	On Road Bicycle: Paved Shoulders	Unfunded
320	Whiting St	Ashley St	Meridian St	Pedestrian Enhancement Corridor	Unfunded
321	Washington St	Franklin St	Nebraska Ave	Pedestrian Enhancement Corridor	Unfunded
322	Morgan St	Ice Palace Dr	Scott St	On Road Bicycle: Re-Stripe	Unfunded
323	Marion St	Whiting St	Harrison St	Pedestrian Enhancement Corridor	Unfunded
324	Madison St	Ashley St	Pierce St	Pedestrian Enhancement Corridor	Unfunded
325	Jefferson St	Channelside Dr	Harrison St	Pedestrian Enhancement Corridor	Unfunded
326	Harbor Island Dr S	Garrison Channel	Ice Palace Dr	Pedestrian Enhancement Corridor	Unfunded
327	Gunn St	Ice Palace Dr	Channelside Dr	Pedestrian Enhancement Corridor	Unfunded
328	Franklin St	Ice Palace Dr	Harrison St	Pedestrian Enhancement Corridor	Unfunded
329	Cumberland St	Jefferson St	Channelside Dr	Pedestrian Enhancement Corridor	Unfunded
330	Channelside Dr	Florida Ave	Meridian St	Pedestrian Enhancement Corridor	Unfunded
331	Brush St	Whiting St	Jackson St	Pedestrian Enhancement Corridor	Unfunded
332	Local Bus	New Flex Route Service Areas (12 vehicles)		Local Bus	Local Sales Tax, Local System Revenues, Federal Formula Based, State Transit Program
333	Local Bus	New Express Route: Citrus Park to USF (2 vehicles)		Local Bus	Local Sales Tax, Local System Revenues, Federal Formula Based, State Transit Program
334	Local Bus	New Express Route: Citrus Park to Brandon (4 vehicles)		Local Bus	Local Sales Tax, Local System Revenues, Federal Formula Based, State Transit Program
335	SR 60 / Memorial Hwy	Kennedy Blvd	Courtney Campbell Cswy	On Road Bicycle: Marked Route	OA
336	7th Ave	Nebraska Ave	50th St	On Road Bicycle: Re-Stripe	Unfunded
337	South Tampa Greenway	Picnic Island	Commerce St	Multi-Use Trail	Unfunded
338	Paratransit	Expansion of Paratransit for Local Bus ADA-Complementary Service (80 vehicles)		Paratransit	Local Sales Tax, Local System Revenues, Federal Formula Based, State Transit Program
339	Paratransit	Maintenance Facility for Local Bus ADA Complementary Paratransit Service		Paratransit	Local Sales Tax, Local Ad Valorem, Federal Formula Based
340	Paratransit	Expansion of Paratransit for Transportation Disadvantaged (57 vehicles)		Paratransit	Unfunded
341	Broadway Ave	Falkenburg Rd	M L King Blvd	2 Lanes Undivided to 4 Lanes Divided	Unfunded
342	Northdale Blvd	Claywell Elementary	Dawnview Dr	4 Lanes Undivided to 4 Lanes with Enhancements	Unfunded
343	George Rd	Memorial Hwy	Hillsborough Ave	2 Lanes Undivided to 4 Lanes Divided	Unfunded
344	Bloomingdale Ave	Lithia Pinecrest Rd	Little Rd	2 Lanes Undivided to 4 Lanes Divided	Unfunded
345	Armenia Ave	Sligh Ave	Waters Ave	2 Lanes Undivided to 2 Lanes with Enhancements	Im Fee Ta
346	Armenia Ave	Waters Ave	Busch Blvd	2 Lanes Undivided to 4 Lanes Divided	Unfunded
347	Gornto Lake Rd	Bloomingdale Ave	Providence Lakes Ext	2 Lanes Undivided to 4 Lanes Divided	Unfunded
348	Travel Demand Management	Telework Tampa Bay, Hillsborough County Program		Travel Demand Management	Unfunded
349	Travel Demand Management	Cash For Commuters, Hillsborough County Program		Travel Demand Management	Unfunded
350	MacDill Ave	Columbus Dr	M L King Blvd	2 Lanes Undivided to 2 Lanes with Enhancements	Unfunded
351	Kennedy Blvd/West	Hoover Blvd	Memorial Hwy	4 Lanes Divided to 6 Lanes Divided	Unfunded

Funding Source:

OA = Other Arterial funds (State & Federal)

TMA = Transportation Management Area funds (Federal)

TE = Transportation Enhancement funds (Federal)

SIS = Strategic Intermodal System funds

Turnpike = Florida's Turnpike Enterprise Funds

THEA = Tampa-Hillsborough Expressway Authority funds

Sales Tax = Pending Funding Source (Hillsborough County Transportation Task Force)

System Revenues

Federal New Starts

Federal Formula-Based (FFB)

Ad Val HC = Hillsborough County Ad-Valorem

Ad Val PC = Plant City Ad-Valorem

Ad Val Ta = Tampa Ad-Valorem

Ad Val TT = Temple Terrace Ad-Valorem

Im Fee HC = Hillsborough County Impact Fee

Im Fee PC = Plant City Impact Fee

Im Fee Ta = Tampa Impact Fee

Federal STP (TMA)

State New Starts

State Transit Program

Im Fee TT = Temple Terrace Impact Fee

Developer = Private Development Requirements

TRIP = Transportation Regional Incentive Program

Other1 = State Bridge Maintenance funds

Other2 = City of Tampa Gas Tax, CIT, CRA, Utility Funds & CDBG

Other3 = future funds as identified for local match to State @Transportation Regional Incentive Program

Other4 = Hillsborough County Gas Tax, CIT, CRA, Utility Funds or CDBG

Transit Planning & Design

Transportation Disadvantaged Program

Priority Ranking	Facility	From	To	Needs Assessment Project Description	Funding Source
352	US Hwy 301	Fowler Ave	Pasco County	2 Lanes Undivided to 4 Lanes Divided	Unfunded
353	Oakfield Dr	Kings	Parsons Ave	2 Lanes Undivided to 4 Lanes Divided	Unfunded
354	M L King Blvd	40th St	I-4	2 Lanes Undivided to 4 Lanes Divided	Unfunded
355	Providence Rd	Riverview Dr	Lumsden Rd	Pedestrian Enhancement Corridor	Unfunded
356	SR 600 / Reynolds St	US 92	Baker St	Pedestrian Enhancement Corridor	Unfunded
357	Platt St			On Road Bicycle: Re-Stripe	TE
358	Manhattan Ave	Euclid Ave	Henderson Rd	On Road Bicycle: Add Bicycle Lanes	Unfunded
359	Henderson Rd	Bay To Bay Blvd	Kennedy Blvd	On Road Bicycle: Re-Stripe	Unfunded
360	Bloomingtondale Ave Ext	Little Rd	Turkey Creek Rd	No Existing Lanes to 4 Lanes Divided	Unfunded
361	Bay to Bay Blvd	Westshore Blvd	Bayshore Blvd	On Road Bicycle: Re-Stripe	Unfunded
362	Plant Ave	Bayshore Blvd	Kennedy Blvd	Pedestrian Enhancement Corridor	Unfunded
363	Local Bus	New Local Route: NW Tampa LRT feeder (3 vehicles)		Local Bus	Local Sales Tax, Local System Revenues, Federal Formula Based, State Transit Program
364	Local Bus	New Express Route: Citrus Park to Westshore (2 vehicles)		Local Bus	Local Sales Tax, Local System Revenues, Federal Formula Based, State Transit Program
365	Hyde Park Ave	Bayshore Blvd	Kennedy Blvd	Pedestrian Enhancement Corridor	Unfunded
366	Church Ave	Henderson Blvd	Kennedy Blvd	Pedestrian Enhancement Corridor	Unfunded
367	Regional Water Transit	Downtown Tampa to Downtown St Petersburg		Regional Water Transit	Unfunded
368	Westshore Blvd	Gandy Blvd	Kennedy Blvd	On Road Bicycle: Add Bicycle Lanes	Unfunded
369	Sitka St./Bird St.	Dale Mabry Hwy	22nd St	On Road Bicycle: Marked Route	TE
370	Riverview Dr	US HWY 41	US HWY 301	Pedestrian Enhancement Corridor	Unfunded
371	Manhattan Ave	Henry Ave	Humphrey St	On Road Bicycle: Paved Shoulders	Unfunded
372	131st Ave	Nebraska Ave	30th St	2 Lanes Undivided to 4 Lanes Divided	Unfunded
373	Whiting St	Morgan St	Brush St	2 Lanes Undivided to 4 Lanes Divided	Unfunded
374	Segments in Unincorporated Hillsborough County with Sidewalks 100% Missing			Sidewalk on one side	Unfunded
375	Apollo Beach Blvd Ext	I-75	US 301	No Existing Lanes to 4 Lanes Divided	Developer
376	Apollo Beach Blvd Ext	US 41	I-75	No Existing Lanes to 4 Lanes Divided	Developer
377	Oakfield/Robertson			On Road Bicycle: Re-Stripe	Unfunded
378	Kings Ave	Bloomingtondale Ave	Victoria St	On Road Bicycle: Re-Stripe	Unfunded
379	Tampa Bay Blvd	Cargo Blvd	Lois Ave	2 Lanes Undivided to 4 Lanes Divided	Unfunded
380	Busch Blvd	North Boulevard	Florida Ave	4 Lanes Undivided to 6 Lanes Divided	Unfunded
381	Gandy Friendship Trail Bridge			Multi-Use Trail	Unfunded
382	Old Memorial Hwy	Hillsborough Ave	Waters Ave	2 Lanes Undivided to 4 Lanes Divided	Unfunded
383	Harney Rd	56th St	US Hwy 301	Pedestrian Enhancement Corridor	Unfunded
384	Gunn Hwy	Ehrlich Rd	Citrus Park Dr	On Road Bicycle: Add Bicycle Lanes	Unfunded
385	Falkenburg Rd	Columbus Dr	Broadway Ave	On Road Bicycle: Add Bicycle Lanes	Unfunded
386	Boyette Rd	Balm Riverview	Bell Shoals Rd	On Road Bicycle: Add Bicycle Lanes	Unfunded
387	Simmons Loop Rd	US 301	Big Bend Rd	No Existing Lanes to 2 Lanes Divided	Developer
388	Simmons Loop Rd	Big Bend Rd	Gibsonton Rd	No Existing Lanes to 2 Lanes Divided	Developer
389	M L King St.	Alexander St	Wheeler St	2 Lanes Undivided to 4 Lanes Divided	Unfunded
390	Streetcar	Current Streetcar (10 Vehicles)		Streetcar	Local Ad Valorem, Local System Revenues, Federal Formula Based, State Transit Program
391	CR 579	US 92	I-4	4 Lanes Divided to 6 Lanes Divided	Unfunded
392	Gibsonton Dr	I-75 S Ramp	US Hwy 301	4 Lanes Divided to 6 Lanes Divided	Unfunded
393	Lois Ave	Tampa Bay Blvd	Hillsborough Ave	2 Lanes Undivided to 4 Lanes Divided	Unfunded

Funding Source:

OA = Other Arterial funds (State & Federal)
 TMA = Transportation Management Area funds (Federal)
 TE = Transportation Enhancement funds (Federal)
 SIS = Strategic Intermodal System funds
 Turnpike = Florida's Turnpike Enterprise Funds
 THEA = Tampa-Hillsborough Expressway Authority funds
 Sales Tax = Pending Funding Source (Hillsborough County Transportation Task Force)
 System Revenues
 Federal New Starts
 Federal Formula-Based (FFB)

Ad Val HC = Hillsborough County Ad-Valorem
 Ad Val PC = Plant City Ad-Valorem
 Ad Val Ta = Tampa Ad-Valorem
 Ad Val TT = Temple Terrace Ad-Valorem
 Im Fee HC = Hillsborough County Impact Fee
 Im Fee PC = Plant City Impact Fee
 Im Fee Ta = Tampa Impact Fee
 Federal STP (TMA)
 State New Starts
 State Transit Program

Im Fee TT = Temple Terrace Impact Fee
 Developer = Private Development Requirements
 TRIP = Transportation Regional Incentive Program
 Other1 = State Bridge Maintenance funds
 Other2 = City of Tampa Gas Tax, CIT, CRA, Utility Funds & CDBG
 Other3 = future funds as identified for local match to State @Transportation Regional Incentive Program
 Other4 = Hillsborough County Gas Tax, CIT, CRA, Utility Funds or CDBG
 Transit Planning & Design
 Transportation Disadvantaged Program

Priority Ranking	Facility	From	To	Needs Assessment Project Description	Funding Source
394	Hillsborough Ave	Highland Ave	Nebraska Ave	4 Lanes Divided to 6 Lanes Divided	Unfunded
395	US 92 / Baker St	SR 600 / Reynolds St	Park Rd	Pedestrian Enhancement Corridor	Unfunded
396	Segments in Temple Terrace with Sidewalks 100% Missing			Sidewalk on one side	Im Fee TT
397	50th Street	Druid Hills	Fowler Ave	On Road Bicycle: Paved Shoulders	Im Fee TT
398	Davis Island Greenway	Channel Drive	Seawall By Airport	Multi-Use Trail	Unfunded
399	Rowlett Park Dr	Sligh Ave	Waters Ave	2 Lanes Undivided to 2 Lanes with Enhancements	Unfunded
400	Spruce St	Lois Ave	Himes Ave	2 Lanes Undivided to 4 Lanes Divided	Unfunded
401	Plant City Connector	North of SR 60	Countyline	Multi-Use Trail	Unfunded
402	Cross County Grnwy Phase IV	Durant Road	Fishhawk Park (Former RR)	Multi-Use Trail	Unfunded
403	Whiting St	Ashley St	Meridian St	On Road Bicycle: Re-Stripe	Unfunded
404	Tampa Bay By-Pass Canal Trail Phase III	By-Pass Canal Boat Ramp	Veterans Memorial Park	Multi-Use Trail	Unfunded
405	Tampa Bay By-Pass Canal Trail Phase II	Temple Terrace Sports Complex	By-Pass Canal Boat Ramp	Multi-Use Trail	Unfunded
406	Tampa Bay By-Pass Canal Trail Phase I	Trout Creek Park	Temple Terrace Sports Complex	Multi-Use Trail	Unfunded
407	Washington St	Ashley St	Nebraska Ave	On Road Bicycle: Re-Stripe	Unfunded
408	St. Joseph St			On Road Bicycle: Marked Route	TMA
409	New Tampa Blvd	I-75	Bruce B Downs Blvd	On Road Bicycle: Paved Shoulders	Unfunded
410	Meridian St	Channelside Dr	Twiggs St	On Road Bicycle: Add Bicycle Lanes	Unfunded
411	Lake Ave	Tampa St	Nebraska Ave	On Road Bicycle: Marked Route	TE
412	Ice Palace Dr	Franklin St	Gunn St	On Road Bicycle: Re-Stripe	Unfunded
413	Cypress St			On Road Bicycle: Re-Stripe	TE
414	Commerce Park Blvd	Tampa Palms Blvd	I-75	On Road Bicycle: Add Bicycle Lanes	Unfunded
415	Channelside Dr	Florida Ave	4th Ave	On Road Bicycle: Re-Stripe	Unfunded
416	Brorrein St	Plant Ave	Channelside Dr	On Road Bicycle: Re-Stripe	Unfunded
417	Hoover Blvd	Hillsborough Ave	Sligh Ave	4 Lanes Divided to 6 Lanes Divided	Unfunded
418	Bougainvillea Ave	30th St	McKinley Blvd	2 Lanes Undivided to 4 Lanes Divided	Unfunded
419	Bell Shoals	Boyette Rd	Bloomingle Ave	2 Lanes Undivided to 4 Lanes Divided	Developer
420	Lynn Turner	Ehrlich Rd	Hutchinson Rd	No Existing Lanes to 2 Lanes Divided	Unfunded
421	Columbus Drive Extension	Regional Water Lane	Falkenburg Rd	No Existing Lanes to 4 Lanes Divided	Committed
422	Woodberry Rd	Falkenburg Rd	Grand Regency Blvd	2 Lanes Undivided to 4 Lanes Divided	Unfunded
423	Woodberry Rd	Grand Regency Blvd	Lakewood Ave	2 Lanes Undivided to 4 Lanes Divided	Unfunded
424	Waters Ave	Nebraska Ave	22nd St	2 Lanes Undivided to 4 Lanes Divided	Unfunded
425	Lumsden Rd	Lithia Pincrest Rd	Valrico Rd	2 Lanes Undivided to 4 Lanes Divided	Unfunded
426	East Tampa Greenway	Loop at Fair Oaks Park		Multi-Use Trail	Unfunded
427	Skipper Rd	Bruce B Downs Blvd	46th St	2 Lanes Undivided to 4 Lanes Divided	Unfunded
428	Fletcher Ave	30th St	Morris Bridge Rd	4 Lanes Divided to 6 Lanes Divided	Unfunded
429	Dale Mabry Hwy	Van Dyke Rd	Cheval Blvd	4 Lanes Divided to 6 Lanes Divided	Unfunded
430	Pearl St	Westshore Blvd	Bayshore Blvd	On Road Bicycle: Add Bicycle Lanes	Unfunded
431	Obrien St	Cypress St	Spruce St	2 Lanes Undivided to 4 Lanes Divided	Developer
432	Falkenburg Rd Ext	78th St	Dead End	No Existing Lanes to 4 Lanes Divided	Developer
433	East Tampa Greenway	30th St	Rogers Golf Course	Multi-Use Trail	Unfunded
434	East Tampa Greenway	50th St	M L King Blvd	Multi-Use Trail	Unfunded
435	Bayshore Blvd Grnwy/Davis Island Grnwy	Hospital	E Davis Blvd	Multi-Use Trail	Unfunded
436	Bayshore Blvd Grnwy	Platt St	Gandy Blvd	Multi-Use Trail	Unfunded

Funding Source:

OA = Other Arterial funds (State & Federal)
 TMA = Transportation Management Area funds (Federal)
 TE = Transportation Enhancement funds (Federal)
 SIS = Strategic Intermodal System funds
 Turnpike = Florida's Turnpike Enterprise Funds
 THEA = Tampa-Hillsborough Expressway Authority funds
 Sales Tax = Pending Funding Source (Hillsborough County Transportation Task Force)
 System Revenues
 Federal New Starts
 Federal Formula-Based (FFB)

Ad Val HC = Hillsborough County Ad-Valorem
 Ad Val PC = Plant City Ad-Valorem
 Ad Val Ta = Tampa Ad-Valorem
 Ad Val TT = Temple Terrace Ad-Valorem
 Im Fee HC = Hillsborough County Impact Fee
 Im Fee PC = Plant City Impact Fee
 Im Fee Ta = Tampa Impact Fee
 Federal STP (TMA)
 State New Starts
 State Transit Program

Im Fee TT = Temple Terrace Impact Fee
 Developer = Private Development Requirements
 TRIP = Transportation Regional Incentive Program
 Other1 = State Bridge Maintenance funds
 Other2 = City of Tampa Gas Tax, CIT, CRA, Utility Funds & CDBG
 Other3 = future funds as identified for local match to State
 Other4 = Hillsborough County Gas Tax, CIT, CRA, Utility Funds or CDBG
 Transit Planning & Design
 Transportation Disadvantaged Program

Priority Ranking	Facility	From	To	Needs Assessment Project Description	Funding Source
437	Cleveland St	Willow Ave	Plant Ave	On Road Bicycle: Re-Stripe	TE
438	Camden Field Pkwy	US Hwy 41	Falkenburg Rd	No Existing Lanes to 2 Lanes Undivided	Unfunded
439	US Hwy 92 / Baker St	Alexander St	Park St	On Road Bicycle: Re-Stripe	Unfunded
440	Parsons Ave	Lumsden Rd	SR 60	2 Lanes Undivided to 4 Lanes Divided	Unfunded
441	Park Rd	US 92	I-4 Frontage Rd S	On Road Bicycle: Re-Stripe	Unfunded
442	Livingston Ave	Bearss Rd	Vandervort Rd	2 Lanes Undivided to 4 Lanes Divided	Unfunded
443	South County N/S Road W of I-75	Apollo Beach Blvd Ext	Big Bend Rd	No Existing Lanes to 2 Lanes Divided	Developer
444	SR 39 / Collins / Wheeler St	Alexander St	I-4 Frontage Rd N	On Road Bicycle: Re-Stripe	Unfunded
445	SR 39 / Collins / Wheeler St	Charlie Griffin	Alexander St	On Road Bicycle: Paved Shoulders	Unfunded
446	South Boulevard	Swann Ave	Kennedy Blvd	2 Lanes Divided to 4 Lanes Divided	Unfunded
447	Lutz Lake Fern Rd	Gunn Hwy	Sun Lake Blvd	On Road Bicycle: Paved Shoulders	Unfunded
448	Gunn Hwy	Tarpon Springs	Van Dyke Rd	On Road Bicycle: Paved Shoulders	Unfunded
449	Evers/Orange	Evers/Orange		On Road Bicycle: Marked Route	Unfunded
450	Airport Rd	Turkey Creek	Sydney	On Road Bicycle: Paved Shoulders	Unfunded
451	Big Bend Rd Ext	Balm Riverview Rd	Balm-Boyette Rd	No Existing Lanes to 2 Lanes Undivided	Developer
452	County Line Rd (Polk)	SR 60	Trapnell Rd	2 Lanes Undivided to 4 Lanes Divided	Committed (Polk County)
453	New Tampa Blvd	Commerce Park Blvd	Meadow Pine Dr	2 Lanes Undivided to 4 Lanes Divided	Committed
454	New Tampa Blvd	Meadow Pine Dr	Bruce B Downs Blvd	2 Lanes Undivided to 4 Lanes Divided	Unfunded
455	Linebaugh Ave	Sheldon Rd	Dale Mabry Hwy	4 Lanes Divided to 6 Lanes Divided	Unfunded
456	Cumberland St	Cesar St	Meridian St	No Existing Lanes to 3 Lanes Undivided	Unfunded
457	S Mobley Rd	Race Track Rd	Gunn Hwy	2 Lanes Undivided to 4 Lanes Divided	Unfunded
458	Linebaugh Ave	Race Track Rd	Countryway Blvd	2 Lanes Undivided to 4 Lanes Divided	Unfunded
459	Dale Mabry Off-Road Bike Path	Lutz Lake Fern Rd	County Line	Multi-Use Trail	Unfunded
460	County Line Rd Ext	Swindell Rd	Knights Griffin Rd	No Existing Lanes to 4 Lanes Divided	Unfunded
461	Sligh Ave Ext.	Sligh Ave	Eureka Springs Rd	No Existing Lanes to 2 Lanes Undivided	Unfunded
462	46th St	Fletcher Ave	Skipper Rd	2 Lanes Undivided to 4 Lanes Divided	Unfunded
463	Woodberry/Victoria/Clay/Front	Gornto Lake Rd	Valrico Rd	On Road Bicycle: Paved Shoulders	OA
464	Whiteway Dr	50th St	Riverhills Dr	On Road Bicycle: Add Bicycle Lanes	Im Fee TT
465	Ridgedale Rd	Druid Hills	Riverhills Dr	On Road Bicycle: Marked Route	Im Fee TT
466	Old Memorial Hwy			On Road Bicycle: Paved Shoulders	Unfunded
467	Oak Preserve Blvd	Kinnan St	Morris Bridge Rd	No Existing Lanes to 2 Lanes Undivided	Developer
468	Druid Hills Rd	50th St	Riverhills Dr	On Road Bicycle: Marked Route	Im Fee TT
469	Himes Ave	Hillsborough Ave	Busch Blvd	2 Lanes Undivided to 4 Lanes Divided	Unfunded
470	Whitting St	Brush St	Meridian St	No Existing Lanes to 4 Lanes Divided	Unfunded
471	Balm-Riverview Rd	US Hwy 301	Rhodine Rd	2 Lanes Undivided to 2 Lanes with Enhancements	Unfunded
472	Falkenburg Rd	Dead End	Eagle Palm	2 Lanes Undivided to 4 Lanes Divided	Developer
473	Northwest Regional Connector Trail Phase II	Ed Radice Copmlex	Fawn Ridge Park	Multi-Use Trail	Unfunded
474	Northwest Regional Connector Trail Phase I	UTBT Near Lake Rogers	Ed Radice Copmlex	Multi-Use Trail	Unfunded
475	Cross County Greenway Phase III	Wimauma Park	Saffold Rd	Multi-Use Trail	Unfunded
476	Cross County Greenway Phase III	Balm Park	Wimauma Park	Multi-Use Trail	Unfunded
477	Cross County Greenway Phase I	Fishhawk Park	Balm Park	Multi-Use Trail	Unfunded
478	Montague St	Manassas	Tate Ln	No Existing Lanes to 2 Lanes Undivided	Unfunded
479	Lumsden Rd	S Mullrennan Rd	Dover Rd	No Existing Lanes to 2 Lanes Undivided	Unfunded
480	Sligh Ave	Benjamin Rd	Manhattan Ave	2 Lanes Divided to 4 Lanes Divided	Unfunded

Funding Source:

OA = Other Arterial funds (State & Federal)
 TMA = Transportation Management Area funds (Federal)
 TE = Transportation Enhancement funds (Federal)
 SIS = Strategic Intermodal System funds
 Turnpike = Florida's Turnpike Enterprise Funds
 THEA = Tampa-Hillsborough Expressway Authority funds
 Sales Tax = Pending Funding Source (Hillsborough County Transportation Task Force)
 System Revenues
 Federal New Starts
 Federal Formula-Based (FFB)

Ad Val HC = Hillsborough County Ad-Valorem
 Ad Val PC = Plant City Ad-Valorem
 Ad Val Ta = Tampa Ad-Valorem
 Ad Val TT - Temple Terrace Ad-Valorem
 Im Fee HC = Hillsborough County Impact Fee
 Im Fee PC = Plant City Impact Fee
 Im Fee Ta = Tampa Impact Fee
 Federal STP (TMA)
 State New Starts
 State Transit Program

Im Fee TT = Temple Terrace Impact Fee
 Developer = Private Development Requirements
 TRIP = Transportation Regional Incentive Program
 Other1 = State Bridge Maintenance funds
 Other2 = City of Tampa Gas Tax, CIT, CRA, Utility Funds & CDBG
 Other3 = future funds as identified for local match to State
 Other4 = Hillsborough County Gas Tax, CIT, CRA, Utility Funds or CDBG
 Transit Planning & Design
 Transportation Disadvantaged Program

Priority Ranking	Facility	From	To	Needs Assessment Project Description	Funding Source
481	Fishhawk Blvd	Bell Shoals Rd	Lithia Pinecrest	2 Lanes Undivided to 4 Lanes Divided	Developer
482	Montague St	Lake Chase Island Way	Citrus Park Ext	No Existing Lanes to 2 Lanes Undivided	Unfunded
483	Knights Griffin Rd	Us Hwy 301	Stacy Rd	No Existing Lanes to 2 Lanes Divided	Unfunded
484	Citrus Park Ext	Linebaugh Ave	Country Way Blvd	No Existing Lanes to 4 Lanes Divided	Unfunded
485	Providence Lake Blvd	English Bluff Ct	Kings	No Existing Lanes to 2 Lanes Undivided	Unfunded
486	N/S Road	Citrus Park Ext	S Mobley Rd	No Existing Lanes to 2 Lanes Undivided	Unfunded
487	Waters Ave	Old Memorial Hwy	Countryway	No Existing Lanes to 4 Lanes Divided	Unfunded
488	Trapnell Rd	Wiggins Rd	County Line Rd	No Existing Lanes to 2 Lanes Undivided	Unfunded
489	Summerfield Blvd	Dixon Dr	Symmes Rd Ext	No Existing Lanes to 2 Lanes Undivided	Unfunded
490	Shell Point Rd Ext	24th St	30th St	No Existing Lanes to 2 Lanes Undivided	Unfunded
491	Bridge St	Tyson St	Gandy Blvd	No Existing Lanes to 2 Lanes Divided	Developer
492	Rhodine Rd Ext	US Hwy 41	US Hwy 301	No Existing Lanes to 2 Lanes Undivided	Unfunded
493	30th St	SR 674	19th Ave	2 Lanes Undivided to 4 Lanes Divided	Unfunded
494	30th St	19th Ave	Apollo Beach Blvd	No Existing Lanes to 4 Lanes Divided	Developer
495	SR 574 / Reynolds St	Woodrow Wilson St	Evers St	On Road Bicycle: Re-Stripe	Unfunded
496	Grant St	Alexander St	SR 39	On Road Bicycle: Add Bicycle Lanes	Unfunded
497	Brooker Rd	Kings Ave	Lithia Pinecrest	On Road Bicycle: Paved Shoulders	TMA
498	New E/W Rd	Montague	Sheldon	No Existing Lanes to 2 Lanes Undivided	Unfunded
499	Jim Johnson Rd	Jap Tucker Rd	Alexander Rd	2 Lanes Undivided to 4 Lanes Divided	Unfunded
500	Knights Griffin Rd	SR 39	Polk County	2 Lanes Undivided to 4 Lanes Divided	Unfunded
501	24th St	SR 674	19th Ave Ne	No Existing Lanes to 4 Lanes Divided	Unfunded
502	24th St	19th Ave NE	Big Bend Road	No Existing Lanes to 4 Lanes Divided	Developer
503	Midway Ext	Alexander St Ext	County Line Rd	No Existing Lanes to 4 Lanes Divided	Unfunded
504	Jim Johnson Ext	Jim Johnson	Trapnell	No Existing Lanes to 4 Lanes Divided	Unfunded
505	Trapnell Rd	SR 39	Jim Johnson Ext	2 Lanes Undivided to 4 Lanes Divided	Unfunded
506	Tyson St	Westshore Blvd	Manhattan Ave	No Existing Lanes to 2 Lanes Undivided	Unfunded

Funding Source:

OA = Other Arterial funds (State & Federal)
 TMA = Transportation Management Area funds (Federal)
 TE = Transportation Enhancement funds (Federal)
 SIS = Strategic Intermodal System funds
 Turnpike = Florida's Turnpike Enterprise Funds
 THEA = Tampa-Hillsborough Expressway Authority funds
 Sales Tax = Pending Funding Source (Hillsborough County Transportation Task Force)
 System Revenues
 Federal New Starts
 Federal Formula-Based (FFB)

Ad Val HC = Hillsborough County Ad-Valorem
 Ad Val PC = Plant City Ad-Valorem
 Ad Val Ta = Tampa Ad-Valorem
 Ad Val TT = Temple Terrace Ad-Valorem
 Im Fee HC = Hillsborough County Impact Fee
 Im Fee PC = Plant City Impact Fee
 Im Fee Ta = Tampa Impact Fee
 Federal STP (TMA)
 State New Starts
 State Transit Program

Im Fee TT = Temple Terrace Impact Fee
 Developer = Private Development Requirements
 TRIP = Transportation Regional Incentive Program
 Other1 = State Bridge Maintenance funds
 Other2 = City of Tampa Gas Tax, CIT, CRA, Utility Funds & CDBG
 Other3 = future funds as identified for local match to State @Transportation Regional Incentive Program
 Other4 = Hillsborough County Gas Tax, CIT, CRA, Utility Funds or CDBG
 Transit Planning & Design
 Transportation Disadvantaged Program

Appendix B (Amended 8/3/10; 1/4/11)

Table B-1 - Cost Affordable Highway, Bicycle, and Pedestrian Projects

SHOWN IN PRESENT DAY COST (PDC) OR YEAR OF EXPENDITURE (YOE) \$ MILLIONS AS NOTED

Project ID	Facility	From	To	Total Project Cost (PDC)	Interim Project Staging (Identified by Phase)						Unfunded Needs (PDC)	Funding Source
					PD&E/PE		ROW		CST			
					Time Period	Cost in YOE	Time Period	Cost in YOE	Time Period	Cost in YOE		
Highway Projects												
On-Going & Committed Projects												
H2110	COUNTYWIDE INTERSECTION PROJECTS			\$ 106.000		\$ -		\$ -	Continuous	\$ 176.170	\$ -	Sales Tax
OP1	COUNTYWIDE ROAD SAFETY AND SUPPORT FOR MAINTENANCE			\$ 4.000		\$ -		\$ -	Continuous	\$ 6.650	\$ -	Sales Tax
H5	I-75, I-4 POTENTIAL FUTURE MANAGED LANES - REQUIRES FURTHER STUDY			\$ 69.825		\$ -		\$ -	Continuous	\$ 121.640	\$ -	TRIP
H5	I-75, I-4 POTENTIAL FUTURE MANAGED LANES - REQUIRES FURTHER STUDY (Local Match)			\$ 69.825		\$ -		\$ -	Continuous	\$ 121.640	\$ -	Other3
MPO	MPO Data Collection & Analysis(Annually)			\$ 10.800		\$ -		\$ -	Continuous	\$ 17.068	\$ -	TMA
H50	24TH ST	19TH AVE NE	BIG BEND RD	\$ 72.752		\$ -		\$ -	Committed	\$ 72.752	\$ -	Developer
H75	40TH ST (Reimbursement)	HILLSBOROUGH AVE	DIANA ST	\$ 18.719		\$ -		\$ -	Committed	\$ 18.719	\$ -	Committed
H77	40TH ST (Reimbursement)	DIANA ST	HANLON ST	\$ 2.705		\$ -		\$ -	Committed	\$ 2.705	\$ -	Committed
H79	40TH ST (Reimbursement)	HANLON ST	YUKON	\$ 8.651		\$ -		\$ -	Committed	\$ 8.651	\$ -	Committed
H275	BOYETTE RD	BALM RIVERVIEW	BELL SHOALS RD	\$ 36.000		\$ -		\$ -	Underway	\$ -	\$ -	Committed
H300	BRUCE B DOWNS BLVD	BEARSS AVE	PALM SPRINGS BLVD	\$ 30.482		\$ -		\$ -	Committed	\$ 30.482	\$ -	Committed
H305	BRUCE B DOWNS BLVD	PALM SPRINGS BLVD	PEBBLE CREEK DR	\$ 128.804		\$ -		\$ -	Underway	\$ -	\$ -	Committed
H380	COLUMBUS DR EXT	REGIONAL WATER LN	FALKENBURG RD	\$ 27.325		\$ -		\$ -	Underway	\$ -	\$ -	Committed
H410	COUNTY LINE RD (POLK)	SR 60	TRAPNELL RD	\$ 62.907	Committed	\$ 4.389	Committed	\$ 29.259	Committed	\$ 29.259	\$ -	Committed
ITS60	HILLSBOROUGH COUNTY	TRAFFIC MANAGEMENT CENTER		\$ 4.413		\$ -		\$ -	Committed	\$ -	\$ -	TMA
H742	I-275	SR 60 (MEMORIAL HWY)	HIMES AVE	\$ 277.823		\$ -		\$ 277.823	Committed	\$ -	\$ -	SIS
H744	I-275	NB I-275 OFF RAMP TO SR 60 AIRPORT FLYOVER		\$ 26.000		\$ -		\$ 26.000	Committed	\$ -	\$ -	SIS
H746	I-275	HIMES AVE	HILLSBOROUGH RIVER	\$ 115.181		\$ -		\$ 115.181	Committed	\$ -	\$ -	SIS
H797	I-275	NORTH OF LIVINGSTON RD	I-75	\$ 12.742		\$ -	Committed	\$ 1.000	Committed	\$ 11.724	\$ -	SIS
ITS70	I-275	HOWARD FRANKLAND BRIDGE	HILLSBOROUGH RIVER	\$ 4.490	Committed	\$ 0.282		\$ -	Committed	\$ 4.209	\$ -	OA
ITS80	I-275	BEARSS AVE	I-75	\$ 5.261		\$ -		\$ -	Committed	\$ 5.261	\$ -	SIS
H825	I-4 CROSSTOWN CONNECTOR	LEE ROY SELMON EXPWY	I-4	\$ 392.496		\$ -	Committed	\$ 16.540	Committed	\$ 375.957	\$ -	Committed
ITS90	I-75	FOWLER AVE	I-275	\$ 4.560		\$ -	Committed	\$ 0.380	Committed	\$ 4.180	\$ -	SIS
H1270	N/S CARGO BLVD	TAMPA BAY BLVD	HILLSBOROUGH AVE	\$ 12.910		\$ -		\$ -	Underway	\$ 12.910	\$ -	Committed
H1315	NEW TAMPA BLVD	COMMERCE PARK BLVD	MEADOW PINE DR	\$ 8.050		\$ -		\$ -	Committed	\$ 8.050	\$ -	Committed
H1370	OBRIEN ST	CYPRESS ST	SPRUCE ST	\$ 1.773	Underway	\$ 0.120	Committed	\$ 0.500	Committed	\$ 1.157	\$ -	Developer
H1405	PARK RD	I-4	SAM ALLEN RD	\$ 4.369		\$ -		\$ -	Committed	\$ 4.369	\$ -	TMA
H1442	RACE TRACK RD	HILLSBOROUGH AVE	LINEBAUGH AVE	\$ 24.400		\$ -		\$ -	Underway	\$ 24.400	\$ -	Committed
H1447	RACE TRACK RD	LINEBAUGH AVE	COUNTRYWAY BLVD	\$ 11.100		\$ -		\$ -	Underway	\$ 11.100	\$ -	Committed
H1630	SIMMONS LOOP RD	US 301	BIG BEND RD	\$ 45.429	Committed	\$ 3.169	Committed	\$ 21.130	Committed	\$ 21.130	\$ -	Developer
H1675	SR 574	HIGHVIEW RD	PARSONS AVE	\$ 19.305		\$ 5.954	Committed	\$ 13.352	Committed	\$ -	\$ -	OA
H1868	US HWY 301	BALM RD	GIBSONTON RD	\$ 27.956		\$ -		\$ -	Committed	\$ 27.956	\$ -	Committed
Construction Planned by 2015												
H30	22ND ST	RIVERHILLS DR	FOWLER AVE	\$ 11.000		\$ -		\$ -	2015	\$ 13.420	\$ -	Sales Tax
H35	22ND ST	CLUB DR	FLETCHER AVE	\$ 3.600		\$ -		\$ -	2015	\$ 4.390	\$ -	Sales Tax
H280	BRIDGE ST	TYSON ST	GANDY BLVD	\$ 9.775	2015	\$ 0.778	2015	\$ 5.185	2015	\$ 5.963	\$ -	Developer
H310	BRUCE B DOWNS BLVD	PEBBLE CREEK DR	COUNTY LINE RD	\$ 13.561		\$ -		\$ -	2015	\$ 16.540	\$ -	TMA**
H310	BRUCE B DOWNS BLVD	PEBBLE CREEK DR	COUNTY LINE RD	\$ 1.639		\$ -		\$ -	2015	\$ 2.000	\$ -	TRIP**
H460	CROSS CREEK BLVD	CORY LAKE ISLES	MORRIS BRIDGE RD	\$ 5.330	committed	\$ 0.830		\$ -	2015	\$ 5.490	\$ -	Sales Tax
H852	I-75	S OF FOWLER AVE	N OF BB DOWNS BLVD	\$ 100.587		\$ -		\$ -	Committed	\$ 100.587	\$ -	SIS
H1000	LEE ROY SELMON EXPWY	FLORIDA AVE	22ND ST	\$ 135.600	Committed	\$ 0.600		\$ -	2015	\$ 164.700	\$ -	THEA
H1635	SIMMONS LOOP RD	BIG BEND RD	GIBSONTON RD	\$ 88.262	2015	\$ 7.513	2015	\$ 50.084	2015	\$ 50.084	\$ -	Developer
H1802	TELECOM PKWY EXT	ARBOR ISLE DRIVE	MORRIS BRIDGE RD	\$ 71.311		\$ -		\$ -	2015	\$ 87.000	\$ -	Developer
H1802	TELECOM PKWY EXT	ARBOR ISLE DRIVE	MORRIS BRIDGE RD	\$ 1.000		\$ -		\$ -	2015	\$ 1.220	\$ -	Sales Tax
H1805	TEMPLE TERRACE DOWNTOWN STREETS			\$ 1.500		\$ -		\$ -	2015	\$ 1.830	\$ -	Sales Tax

FUNDING SOURCES:

OA = Other Arterial funds (State & Federal);
 TMA = Transportation Management Area funds (Federal)
 TE = Transportation Enhancement funds (Federal)
 SIS = Strategic Intermodal System funds
 Turnpike = Florida's Turnpike Enterprise Funds
 THEA = Expressway Authority funds
 Sales Tax = Transportation System Surtax

FUNDING SOURCES:

Ad Val HC = Hillsborough County Ad-Valorem
 Ad Val PC = Plant City Ad-Valorem
 Ad Val Ta = Tampa Ad-Valorem
 Ad Val TT - Temple Terrace Ad-Valorem
 Im Fee HC = Hillsborough County Impact Fee
 Im Fee PC = Plant City Impact Fee
 Im Fee Ta = Tampa Impact Fee

FUNDING SOURCES:

Im Fee TT = Temple Terrace Impact Fee
 Developer = Private Development Requirements
 TRIP = Transportation Regional Incentive Program
 Other1 = State Bridge Maintenance funds
 Other2 = City of Tampa Gas Tax, CIT, CRA, Utility Funds & CDBG
 Other3 = future funds as
 ** = Projects that could be implemented sooner through new transportation system surtax

Appendix B (Amended 8/3/10; 1/4/11)

Table B-1 - Cost Affordable Highway, Bicycle, and Pedestrian Projects

SHOWN IN PRESENT DAY COST (PDC) OR YEAR OF EXPENDITURE (YOE) \$ MILLIONS AS NOTED

Project ID	Facility	From	To	Total Project Cost (PDC)	Interim Project Staging (Identified by Phase)						Unfunded Needs (PDC)	Funding Source
					PD&E/PE		ROW		CST			
					Time Period	Cost in YOE	Time Period	Cost in YOE	Time Period	Cost in YOE		
Construction Planned During 2016 - 2020												
H130	APOLLO BEACH BLVD EXT	US 41	I-75	\$ 35.000		\$ -		\$ -	2016-2020	\$ 47.950	\$ -	Developer
H135	APOLLO BEACH BLVD EXT	I-75	US 301	\$ 52.474	2015	\$ 4.466	2016-2020	\$ 33.437	2016-2020	\$ 33.437	\$ -	Developer
H220	BIG BEND RD	I-75 N RAMP	SIMMONS LOOP RD	\$ 5.500		\$ -		\$ -	2016-2020	\$ 7.540	\$ -	Sales Tax
H222	BIG BEND RD	SIMMONS LOOP RD	US HWY 301	\$ 12.000		\$ -		\$ -	2016-2020	\$ 16.440	\$ -	Developer
H240	BIG BEND RD EXT	BALM RIVERVIEW RD	BOYETTE RD	\$ 66.601	2016-2020	\$ 5.951	2016-2020	\$ 39.671	2016-2020	\$ 45.621	\$ -	Developer
H375	CITRUS PARK EXT	COUNTRY WAY BLVD	SHELDON	\$ 56.000		\$ -	2016-2020	\$ 38.360	2016-2020	\$ 38.360	\$ -	Sales Tax
ITS40	CITY OF PLANT CITY	ADVANCED TRAFFIC MANAGEMENT SYSTEM		\$ 1.970		\$ -		\$ -	2016-2020	\$ 2.699	\$ -	Ad Val PC
ITS10	CITY OF TAMPA	ADVANCED TRAFFIC MANAGEMENT SYSTEM		\$ 8.250		\$ -		\$ -	2016-2020	\$ 11.303	\$ -	TMA
ITS20	COURTNEY CAMPBELL CSWY	PINELLAS COUNTY	VETERANS EXPY.	\$ 3.350		\$ -		\$ -	2016-2020	\$ 4.590	\$ -	OA
H420	CR 39 (ALEXANDER)	I-4	KNIGHTS GRIFFIN RD	\$ 29.900		\$ -		\$ -	2016-2020	\$ 40.963	\$ -	OA**
H570	FLORIDA AVE	VIOLET	WATERS AVE	\$ 5.098		\$ -		\$ -	2016-2020	\$ 6.985	\$ -	OA
ITS30	GANDY BLVD	PINELLAS COUNTY	LEE ROY SELMON	\$ 2.300		\$ -		\$ -	2016-2020	\$ 3.151	\$ -	OA
H580	GANDY BLVD - (ELEV. STRUCTURE)	DALE MABRY HWY	GANDY BRIDGE	\$ 115.120	underway	\$ -	2015	\$ 0.146	2016-2020	\$ 157.550	\$ -	THEA
H620	GORNT0 LAKE RD	BRANDON TOWN CENTER	SR 60	\$ 8.000	2016-2020	\$ 1.320	2016-2020	\$ 4.820	2016-2020	\$ 4.820	\$ -	Sales Tax
H670	HANNA AVE	NEBRASKA AVE	56TH ST	\$ 9.303		\$ -		\$ -	2016-2020	\$ 12.745	\$ -	Other2
H741	I-275	HOWARD FRANKLAND BRIDGE	HIMES AVE	\$ 63.498		\$ -		\$ -	2016-2020	\$ 86.993	\$ -	SIS
H855	I-75	N OF BB DOWNS BLVD	S OF SR 56	\$ 37.768		\$ -	Committed	\$ 0.777	Committed	\$ 36.991	\$ -	SIS
H859	I-75	AT GIBSONTON DRIVE	INTERCHANGE	\$ 25.000		\$ -		\$ -	2016-2020	\$ 30.500	\$ -	Sales Tax
H920	KENNEDY BLVD/SR 60	MEMORIAL HWY	CHURCH ST.	\$ 3.584		\$ -		\$ -	2016-2020	\$ 4.910	\$ -	TMA
H930	KENNEDY BLVD/SR 60	CHURCH ST.	ASHLEY ST.	\$ 7.863		\$ -		\$ -	2016-2020	\$ 10.773	\$ -	TMA
H1040	LITHIA PINECREST RD	SR 60	LUMSDEN RD	\$ 8.300		\$ -		\$ -	2016-2020	\$ 11.370	\$ -	Sales Tax
H1100	LUTZ LAKE FERN RD	SUNCOAST PARKWAY	DALE MABRY HWY	\$ 71.729	Committed	\$ 6.617	Committed	\$ 44.110	2016-2020	\$ 28.770	\$ -	Sales Tax
H1200	MARITIME BLVD	HOOKERS POINT	20TH ST	\$ 3.196		\$ -		\$ -	2016-2020	\$ 4.379	\$ -	TMA
H1350	OAKFIELD DR	LAKEWOOD DR	KINGS AVE	\$ 2.663		\$ -		\$ -	2016-2020	\$ 3.649	\$ -	Im Fee HC
H1550	SAM ALLEN RD	SR 39	PARK RD	\$ 33.273	Committed	\$ 3.120	Committed	\$ 2.503	2016-2020	\$ 37.881	\$ -	TMA**
ORT370	SELMON GREENWAY TRAIL	HILLSBOROUGH AVE	MERIDIAN ST	\$ 0.312	2015	\$ 0.040			2016-2020	\$ 0.380		THEA
ORT380	SELMON GREENWAY TRAIL	MERIDIAN ST	22ND ST	\$ 0.280	2015	\$ 0.040			2016-2020	\$ 0.340		OA
H1600	SLIGH AVE	ARMENIA AVE	FLORIDA AVE	\$ 2.962		\$ -		\$ -	2016-2020	\$ 4.057	\$ -	TMA
H1680	SR 574	PARSONS AVE	KINGSWAY	\$ 28.160	Underway	\$ -	2015	\$ 25.266	2016-2020	\$ 10.207	\$ -	OA
OP3	SUN CITY CENTER ROADWAY IMPROVEMENTS			\$ 8.000	2016-2020	\$ 1.320		\$ -	2016-2020	\$ 9.640	\$ -	Sales Tax
H1842	TURKEY CREEK RD	SYDNEY RD	AIRPORT RD	\$ 4.670		\$ -		\$ -	2016-2020	\$ 6.400	\$ -	Sales Tax
H1865	US HWY 301	SR 674	BALM RD	\$ 25.000		\$ -		\$ -	2016-2020	\$ 34.250	\$ -	Sales Tax
H1865	US HWY 301	SR 674	BALM RD	\$ 16.241		\$ -		\$ -	2016-2020	\$ 22.250	\$ -	OA
H1865	US HWY 301	SR 674	BALM RD	\$ 8.759	Underway	\$ -	Underway	\$ -	2016-2020	\$ 12.000	\$ -	TRIP
H1890	US HWY 301	TAMPA BYPASS CANAL	FOWLER AVE	\$ 34.450	Underway	\$ -	Committed	\$ 4.260	2016-2020	\$ 41.360	\$ -	OA
H1950	VAN DYKE RD	TOBACCO RD	WHIRLEY RD	\$ 75.224	2015	\$ 5.985	2015	\$ 39.901	2016-2020	\$ 51.530	\$ -	Sales Tax
Construction Planned During 2021 - 2025												
H20	22ND ST	HILLSBOROUGH AVE	21ST AVE	\$ 9.800		\$ -		\$ -	2021-2025	\$ 15.780	\$ -	Sales Tax
H90	78TH ST	MADISON AVE	CAUSEWAY BLVD	\$ 4.264		\$ -		\$ -	2021-2025	\$ 6.865	\$ -	TMA
H95	78TH ST	HARNEY RD	TEMPLE TERRACE HWY	\$ 3.000	2021-2025	\$ 0.580		\$ -	2021-2025	\$ 4.250		Sales Tax
H160	ARMENIA AVE	BUSCH BLVD	FLETCHER AVE	\$ 6.877		\$ -		\$ -	2021-2025	\$ 11.072	\$ -	TMA
H180	BELL SHOALS RD	BOYETTE RD	BLOOMINGDALE AVE	\$ 30.000		\$ -		\$ -	2021-2025	\$ 48.300	\$ -	Developer
H190	BELL SHOALS RD	BLOOMINGDALE AVE	LITHIA PINECREST RD	\$ 5.237		\$ -		\$ -	2021-2025	\$ 8.432	\$ -	TMA
H344	CASS ST	ASHLEY ST	TYLER ST	\$ 0.906		\$ -		\$ -	2021-2025	\$ 1.459	\$ -	Other2
H520	FALKENBURG RD	78TH ST	EAGLE PALM	\$ 45.799	2021-2025	\$ 4.809	2021-2025	\$ 32.059	2021-2025	\$ 36.868	\$ -	Developer
H530	FALKENBURG RD	BRYAN RD	HILLSBOROUGH AVE	\$ 21.295	2021-2025	\$ 2.236	2021-2025	\$ 14.907	2021-2025	\$ 17.143	\$ -	Developer
H550	FISHHAWK BLVD	BELL SHOALS RD	LITHIA PINECREST	\$ 136.475	2021-2025	\$ 14.330	2021-2025	\$ 95.533	2021-2025	\$ 109.863	\$ -	Developer
H857	I-75	AT BIG BEND ROAD	INTERCHANGE	\$ 40.000		\$ -		\$ -	2021-2025	\$ 64.400	\$ -	Sales Tax

FUNDING SOURCES:

OA = Other Arterial funds (State & Federal);
 TMA = Transportation Management Area funds (Federal)
 TE = Transportation Enhancement funds (Federal)
 SIS = Strategic Intermodal System funds
 Turnpike = Florida's Turnpike Enterprise Funds
 THEA = Expressway Authority funds
 Sales Tax = Transportation System Surtax

FUNDING SOURCES:

Ad Val HC = Hillsborough County Ad-Valorem
 Ad Val PC = Plant City Ad-Valorem
 Ad Val Ta = Tampa Ad-Valorem
 Ad Val TT - Temple Terrace Ad-Valorem
 Im Fee HC = Hillsborough County Impact Fee
 Im Fee PC = Plant City Impact Fee
 Im Fee Ta = Tampa Impact Fee

FUNDING SOURCES:

Im Fee TT = Temple Terrace Impact Fee
 Developer = Private Development Requirements
 TRIP = Transportation Regional Incentive Program
 Other1 = State Bridge Maintenance funds
 Other2 = City of Tampa Gas Tax, CIT, CRA, Utility Funds & CDBG
 Other3 = future funds as
 ** = Projects that could be implemented sooner through new transportation system surtax

Appendix B (Amended 8/3/10; 1/4/11)

Table B-1 - Cost Affordable Highway, Bicycle, and Pedestrian Projects

SHOWN IN PRESENT DAY COST (PDC) OR YEAR OF EXPENDITURE (YOE) \$ MILLIONS AS NOTED

Project ID	Facility	From	To	Total Project Cost ² (PDC)	Interim Project Staging (Identified by Phase)						Unfunded Needs (PDC)	Funding Source
					DD&E/DE ⁵		ROW ¹		CST ¹			
					Time Period	Cost in YOE	Time Period	Cost in YOE	Time Period	Cost in YOE		
H860	INDEPENDENCE PKWY	MEMORIAL HWY	VETERAN'S EXPRESSWAY	\$ 60.737	2015	\$ 2.261	2016-2020	\$ 16.928	2021-2025	\$ 74.909	\$ -	Other2
H950	KINGS AVE	SR60/BRANDON BLVD	VICTORIA ST	\$ 1.347		\$ -		\$ -	2021-2025	\$ 2.169	\$ -	TMA
H960	KINGSWAY RD	SR60/BRANDON BLVD	M L KING BLVD	\$ 8.188		\$ -		\$ -	2021-2025	\$ 13.182	\$ -	Im Fee HC
H1043	LITHIA PINECREST RD	LUMSDEN RD	BLOOMINGDALE AVE	\$ 7.701		\$ -		\$ -	2021-2025	\$ 12.398	\$ -	Sales Tax
H1070	LOIS AVE	KENNEDY BLVD	BOY SCOUT BLVD	\$ 3.132		\$ -		\$ -	2021-2025	\$ 5.043	\$ -	TE
H1150	M L KING BLVD	MCINTOSH RD	SAMMONDS RD	\$ 9.717		\$ -		\$ -	2021-2025	\$ 15.644	\$ -	OA
H1170	MADISON AVE	US 41	66TH STREET	\$ 35.399	2021-2025	\$ 3.976	2021-2025	\$ 26.508	2021-2025	\$ 26.508	\$ -	Developer
H1180	MANHATTAN AVE	HENRY AVE	SLIGH AVE	\$ 1.922		\$ -		\$ -	2021-2025	\$ 3.095	\$ -	Im Fee Ta
H1215	MEADOW POINTE RD	OAK PRESERVE BLVD	PASCO COUNTY LINE	\$ 20.098	2021-2025	\$ 2.257	2021-2025	\$ 15.050	2021-2025	\$ 15.050	\$ -	Developer
H1290	NEBRASKA	HILLSBOROUGH AVE	BUSCH BLVD	\$ 6.679		\$ -		\$ -	2021-2025	\$ 10.754	\$ -	TMA
H1365	OAK PRESERVE BLVD	KINNAN ST	MORRIS BRIDGE RD	\$ 94.952	2021-2025	\$ 10.665	2021-2025	\$ 71.104	2021-2025	\$ 71.104	\$ -	Developer
H1430	PROGRESS BLVD	FALKENBURG RD	I-75	\$ 25.256	2021-2025	\$ 2.840	2021-2025	\$ 18.910	2021-2025	\$ 18.910	\$ -	Developer
H1610	SLIGH AVE	56TH ST	US HWY 301	\$ 4.634		\$ -		\$ -	2021-2025	\$ 7.460	\$ -	TMA
H1640	SOUTH COUNTY N/S ROAD W OF I-75	APOLLO BEACH BLVD EXT	BIG BEND RD	\$ 37.382	2021-2025	\$ 3.925	2021-2025	\$ 26.167	2021-2025	\$ 30.093	\$ -	Developer
H1670	SR 39	PARK RD	ALABAMA ST	\$ 1.760		\$ -		\$ -	2021-2025	\$ 2.833	\$ -	TMA
H1730	SR 60	US HWY 301	FALKENBURG RD	\$ 28.930	2016-2020	\$ 2.274	2016-2020	\$ 14.563	2021-2025	\$ 26.790	\$ -	OA
H1749	SUMMERFIELD BLVD	BIG BEND RD	WEST LAKE RD	\$ 1.457		\$ -	2021-2025	\$ 2.345		\$ -	\$ -	Developer
H1770	SWANN AVE	HOWARD AVE	BAYSHORE BLVD	\$ 2.096		\$ -		\$ -	2021-2025	\$ 3.375	\$ -	Im Fee Ta
H1845	TYLER ST	ASHLEY ST	CASS ST	\$ 0.843		\$ -		\$ -	2021-2025	\$ 1.360	\$ -	Other2
H1930	US HWY 92	SR 600	REYNOLDS ST	\$ 2.197		\$ -		\$ -	2021-2025	\$ 3.538	\$ -	Ad Val PC
H1940	VAN DYKE RD	GUNN HWY	TOBACCO RD	\$ 1.812		\$ -		\$ -	2021-2025	\$ 2.917	\$ -	TMA
H1960	VETERANS EXPWY	COURTNEY CAMPBELL	SUNCOAST PKWY	\$ 376.261	Committed	\$ 24.539	2016-2020	\$ 224.121	2021-2025	\$ 302.890	\$ -	Turnpike
H1990	WATERS AVE	ARMENIA AVE	NEBRASKA AVE	\$ 5.321		\$ -		\$ -	2021-2025	\$ 8.567	\$ -	TMA
Construction Planned During 2026 - 2030												
H70	30TH ST	19TH AVE	APOLLO BEACH BLVD	\$ 69.945	2016-2020	\$ 6.249	2016-2020	\$ 41.663	2026-2030	\$ 66.098	\$ -	Developer
H100	7TH AVE	22ND ST	50TH ST	\$ 8.000		\$ -		\$ -	2026-2030	\$ 15.120	\$ -	Sales Tax
H150	ARMENIA AVE	TAMPA BAY BLVD	SLIGH AVE	\$ 5.919		\$ -		\$ -	2026-2030	\$ 11.187	\$ -	Im Fee Ta
H215	BIG BEND RD	COVINGTON GARDEN DR	I-75 N RAMP	\$ 9.000		\$ -		\$ -	2026-2030	\$ 17.010	\$ -	Developer
H360	CAUSEWAY BLVD	MARITIME BLVD	50TH ST	\$ 15.138	2016-2020	\$ 7.777	2016-2020	\$ 12.961		\$ -	\$ -	OA
H360	CAUSEWAY BLVD	MARITIME BLVD	50TH ST	\$ 66.227		\$ -	2021-2025	\$ 45.696	2026-2030	\$ 71.525	\$ -	OA
ORB940	COUNTYWIDE PAVED SHOULDERS / BIKE LANES			\$ 12.500		\$ -		\$ -	2026-2030	\$ 23.630	\$ -	Sales Tax
H510	EUCLID AVE	DALE MABRY HWY	BAYSHORE BLVD	\$ 2.122		\$ -		\$ -	2026-2030	\$ 4.010	\$ -	Im Fee Ta
H650	GUNN HWY	EHRlich RD	CITRUS POINTE DR	\$ 0.964		\$ -		\$ -	2026-2030	\$ 1.822	\$ -	TMA
H690	HENDERSON BLVD	BAY TO BAY BLVD	LOIS AVE	\$ 1.624		\$ -		\$ -	2026-2030	\$ 3.070	\$ -	TMA
H720	HILLSBOROUGH AVE	50TH ST	ORIENT RD	\$ 59.860	2016-2020	\$ 5.721	2021-2025	\$ 44.825	2026-2030	\$ 52.621	\$ -	OA
IT550	HILLSBOROUGH COUNTY	ADVANCED TRAFFIC MANAGEMENT SYSTEM		\$ 2.400		\$ -		\$ -	2026-2030	\$ 4.536	\$ -	TMA
H795	I-275	N. OF US 41	NORTH OF LIVINGSTON RD	\$ 23.803		\$ -	Committed	\$ 1.000	Committed	\$ 22.803	\$ -	SIS
H810	I-275	HOWARD FRANKLAND BRIDGE		\$ 259.050	Committed	\$ 23.550			2026-2030	\$ 445.095	\$ -	Other1
H1044	LITHIA PINECREST RD	BLOOMINGDALE AVE	ADELAIDE DR	\$ 20.000		\$ -		\$ -	2026-2030	\$ 37.800	\$ -	Developer
H1046	LITHIA PINECREST RD	ADELAIDE DR	FISHAWK TRAILS	\$ 75.000		\$ -		\$ -	2026-2030	\$ 141.750	\$ -	Sales Tax
H1160	MACDILL AVE	MACDILL AFB	BAY TO BAY BLVD	\$ 8.930		\$ -		\$ -	2026-2030	\$ 16.878	\$ -	TMA
H1164	MACDILL AVE	BAY TO BAY BLVD	COLUMBUS DR	\$ 7.567		\$ -		\$ -	2026-2030	\$ 14.302	\$ -	TMA
H1210	MAYDELL RD	CAUSEWAY BLVD	ADAMO DR	\$ 5.329		\$ -		\$ -	2026-2030	\$ 10.072	\$ -	TMA
H1420	PAULS DR	BRANDON PKWY	SR 60	\$ 7.600		\$ -		\$ -	2026-2030	\$ 14.360	\$ -	Sales Tax
H1700	SR 60 (NB INTERCHANGE)	I-275	SPRUCE ST	\$ 173.394		\$ -	2026-2030	\$ 145.200	2026-2030	\$ 182.517	\$ -	SIS
H1810	TARPON SPRINGS RD	PINELLAS COUNTY	GUNN HWY	\$ 4.773		\$ -		\$ -	2026-2030	\$ 9.020	\$ -	TMA
OP2	TEMPLE TERRACE SUPPORT FOR MAINTENANCE			\$ 3.100		\$ -		\$ -	2026-2030	\$ 5.860	\$ -	Sales Tax

FUNDING SOURCES:

OA = Other Arterial funds (State & Federal);
 TMA = Transportation Management Area funds (Federal)
 TE = Transportation Enhancement funds (Federal)
 SIS = Strategic Intermodal System funds
 Turnpike = Florida's Turnpike Enterprise Funds
 THEA = Expressway Authority funds
 Sales Tax = Transportation System Surtax

FUNDING SOURCES:

Ad Val HC = Hillsborough County Ad-Valorem
 Ad Val PC = Plant City Ad-Valorem
 Ad Val Ta = Tampa Ad-Valorem
 Ad Val TT - Temple Terrace Ad-Valorem
 Im Fee HC = Hillsborough County Impact Fee
 Im Fee PC = Plant City Impact Fee
 Im Fee Ta = Tampa Impact Fee

FUNDING SOURCES:

Im Fee TT = Temple Terrace Impact Fee
 Developer = Private Development Requirements
 TRIP = Transportation Regional Incentive Program
 Other1 = State Bridge Maintenance funds
 Other2 = City of Tampa Gas Tax, CIT, CRA, Utility Funds & CDBG
 Other3 = future funds as
 ** = Projects that could be implemented sooner through new transportation system surtax

Appendix B (Amended 8/3/10; 1/4/11)

Table B-1 - Cost Affordable Highway, Bicycle, and Pedestrian Projects

SHOWN IN PRESENT DAY COST (PDC) OR YEAR OF EXPENDITURE (YOE) \$ MILLIONS AS NOTED

Project ID	Facility	From	To	Total Project Cost (PDC)	Interim Project Staging (Identified by Phase)						Unfunded Needs (PDC)	Funding Source
					PD&E/PE		ROW		CST			
					Time Period	Cost in YOE	Time Period	Cost in YOE	Time Period	Cost in YOE		
Construction Planned During 2031 - 2035												
H145	ARMENIA AVE	SLIGH AVE	WATERS AVE	\$ 2.408		\$ -		\$ -	2031-2035	\$ 5.345	\$ -	Im Fee Ta
H700	HENDERSON BLVD	LOIS AVE	KENNEDY BLVD	\$ 4.885		\$ -		\$ -	2031-2035	\$ 10.845	\$ -	Im Fee Ta
H910	JOHN MOORE RD	BLOOMINGDALE AVE	LUMSDEN RD	\$ 5.364		\$ -		\$ -	2031-2035	\$ 11.907	\$ -	TMA
H2120	POTENTIAL I-75 SOUTH COUNTY INTERCHANGE - REQUIRES FURTHER STUDY			\$ 35.000		\$ -		\$ -	2031-2035	\$ 77.700	\$ -	Sales Tax
H2120	POTENTIAL I-75 SOUTH COUNTY INTERCHANGE - REQUIRES FURTHER STUDY			\$ 91.000		\$ -		\$ -	Unfunded		\$ 91.000	Unfunded
H1510	SAM ALLEN RD	FORBES RD	ALEXANDER ST EXT	\$ 3.822		\$ -		\$ -	2031-2035	\$ 8.486	\$ -	TE
H1690	SR 574	KINGSWAY	MCINTOSH RD	\$ 23.465	Committed	\$ 2.867	2021-2025	\$ 33.163		\$ -	\$ -	OA
H1690	SR 574	KINGSWAY	MCINTOSH RD	\$ 41.292		\$ -	2026-2030	\$ 25.953	2031-2035	\$ 61.183	\$ -	OA
H1710	SR 60 (SB INTERCHANGE)	I-275	SPRUCE ST	\$ 65.909	2026-2030	\$ 13.893	2026-2030	\$ 4.158	2031-2035	\$ 125.115	\$ -	SIS
H1740	SR 674	US 301	CR 579/SAFFOLD RD	\$ 66.744	2026-2030	\$ 8.801	2026-2030	\$ 58.673	2031-2035	\$ 68.917	\$ -	OA
H2010	WESTSHORE BLVD	GANDY BLVD	BEACH PARK DRIVE	\$ 8.459		\$ -		\$ -	2031-2035	\$ 18.780	\$ -	TMA
H2020	WESTSHORE BLVD	GRAY ST	BOY SCOUT BLVD	\$ 26.648	2026-2030	\$ 4.910	2031-2035	\$ 26.690	2031-2035	\$ 26.690	\$ -	Sales Tax
H2040	WHEELER ST	M L KING ST	REYNOLDS ST	\$ 12.906		\$ -		\$ -	2031-2035	\$ 28.651	\$ -	TMA
Construction Expected After 2035												
H480	DALE MABRY FRT RD E/W	CHEVAL BLVD	US HWY 41	\$ 316.800	Committed	\$ 2.000	Unfunded	\$ -	Unfunded	\$ -	\$ 314.800	OA
H800	I-275	W OF KENNEDY RAMPS	MEMORIAL HWY BRIDGE	\$ 30.017	2031-2035	\$ 7.173	2031-2035	\$ 4.476	Unfunded	\$ -	\$ 24.770	SIS
H840	I-75	AT I-4	INTERCHANGE	\$ 64.954	2016-2020	\$ 8.642	2021-2025	\$ 10.475	Unfunded	\$ -	\$ 52.140	SIS
H850	I-75	N OF I-4	S OF FOWLER AVE	\$ 117.597	2026-2030	\$ 24.519	2031-2035	\$ 38.481	Unfunded	\$ -	\$ 87.290	SIS
ITS85	I-75	MANATEE COUNTY	BLOOMINGDALE AVE	\$ 4.093	Committed	\$ 0.593		\$ -	Unfunded	\$ -	\$ 3.500	OA
H1760	SUNCOAST PARKWAY	VETERANS EXPWY	PASCO COUNTY	\$ 162.646	2026-2030	\$ 16.715	2031-2035	\$ 130.887	Unfunded	\$ -	\$ 94.844	Turnpike
H1800	TAMPA BAY BLVD	HIMES AVE	ARMENIA AVE	\$ 33.666	2031-2035	\$ 4.378	Unfunded	\$ -	Unfunded	\$ -	\$ 31.694	TMA
H1860	US HWY 301	MANATEE COUNTY	SR 674	\$ 138.481	2021-2025	\$ 14.541	Unfunded	\$ -	Unfunded	\$ -	\$ 129.450	OA
H1900	US HWY 41	19TH AVE NE	MADISON AVE	\$ 466.458	2031-2035	\$ 67.535	Unfunded	\$ -	Unfunded	\$ -	\$ 436.037	OA
H1910	US HWY 92	PARK RD	COUNTY LINE RD	\$ 90.498	2026-2030	\$ 11.155	Unfunded	\$ -	Unfunded	\$ -	\$ 84.596	OA
H1920	US HWY 92	GARDEN LANE	THONOTOSASSA RD	\$ 341.155	2031-2035	\$ 49.393	Unfunded	\$ -	Unfunded	\$ -	\$ 318.906	TMA
Bike / Trail Projects												
On-Going & Committed Projects												
ORT275	Hillsborough River Greenway	Macdill Park	Kennedy Blvd	\$ 2.030		\$ -		\$ -	Committed	\$ 2.030	\$ -	TE
ORT70	South Coast Greenway (Phase I)	College Avenue	19th Avenue	\$ 2.073		\$ -		\$ -	Committed	\$ 2.073	\$ -	Committed
ORB1	TAMPA - CITYWIDE ON ROAD BIKE LANES			\$ 0.030	Continuous	\$ 0.010		\$ -	Continuous	\$ 0.040	\$ -	Im Fee Ta
ORB1	TAMPA - CITYWIDE ON ROAD BIKE LANES			\$ 1.798	Continuous	\$ 0.290		\$ -	Continuous	\$ 2.180	\$ -	OA
ORB1	TAMPA - CITYWIDE ON ROAD BIKE LANES			\$ 5.327	Continuous	\$ 0.990		\$ -	Continuous	\$ 7.600	\$ -	Other2
ORB1	TAMPA - CITYWIDE ON ROAD BIKE LANES			\$ 2.764	Continuous	\$ 0.680		\$ -	Continuous	\$ 3.590	\$ -	TE
ORB1	TAMPA - CITYWIDE ON ROAD BIKE LANES			\$ 4.565	Continuous	\$ 0.850		\$ -	Continuous	\$ 6.500	\$ -	TMA
Construction Planned During 2016 - 2020												
ORB960	19TH AVE & SHELL POINT RD	EG SIMMONS PARK & 32ND ST	US HWY 301 & 21ST ST	\$ 9.000		\$ -		\$ -	2016-2020	\$ 12.330	\$ -	Sales Tax
ORB920	50TH STREET	DRUID HILLS	FOWLER AVE	\$ 0.441	2016-2020	\$ 0.070		\$ -	2016-2020	\$ 0.534	\$ -	Im Fee TT
ORB520	NEBRASKA AVE (or alt rte Fla)	FOWLER AVE	FLORIDA/NEBRASKA	\$ 0.055	2016-2020	\$ 0.009		\$ -	2016-2020	\$ 0.066	\$ -	TE
ORB530	NEBRASKA AVE (or alt rte Fla)	HILLSBOROUGH AVE	FOWLER AVE	\$ 0.107	2016-2020	\$ 0.017		\$ -	2016-2020	\$ 0.130	\$ -	TE
ORB690	SR 60 / BRANDON BLVD (alt rte Woodberry/Victoria/Clay)	GORNT0 LAKE RD	VALRICO RD	\$ 1.768	2016-2020	\$ 0.279		\$ -	2016-2020	\$ 2.142	\$ -	OA
ORT80	South Coast Greenway (Phase II)	19th Avenue	Big Bend Road	\$ 1.834	2016-2020	\$ 0.290		\$ -	2016-2020	\$ 2.222	\$ -	Developer
ORT60	TEMPLE TERRACE MULTI-USE TRAIL	TEMPLE TERRACE HWY	RAILROAD PARK	\$ 2.000		\$ -		\$ -	2015	\$ 2.440	\$ -	TE
ORT10	UPPER TAMPA BAY TRAIL PHASE IV	PETERSON RD PARK	SUNCOAST TRAIL AT LUTZ LAKE FERN RD	\$ 3.500	2015	\$ 4.270		\$ -		\$ -	\$ -	TE
ORT10	UPPER TAMPA BAY TRAIL PHASE IV	PETERSON RD PARK	SUNCOAST TRAIL AT LUTZ LAKE FERN RD	\$ 5.000		\$ -		\$ -	2016-2020	\$ 6.850	\$ -	TMA

FUNDING SOURCES:

OA = Other Arterial funds (State & Federal);
 TMA = Transportation Management Area funds (Federal)
 TE = Transportation Enhancement funds (Federal)
 SIS = Strategic Intermodal System funds
 Turnpike = Florida's Turnpike Enterprise Funds
 THEA = Expressway Authority funds
 Sales Tax = Transportation System Surtax

FUNDING SOURCES:

Ad Val HC = Hillsborough County Ad-Valorem
 Ad Val PC = Plant City Ad-Valorem
 Ad Val Ta = Tampa Ad-Valorem
 Ad Val TT - Temple Terrace Ad-Valorem
 Im Fee HC = Hillsborough County Impact Fee
 Im Fee PC = Plant City Impact Fee
 Im Fee Ta = Tampa Impact Fee

FUNDING SOURCES:

Im Fee TT = Temple Terrace Impact Fee
 Developer = Private Development Requirements
 TRIP = Transportation Regional Incentive Program
 Other1 = State Bridge Maintenance funds
 Other2 = City of Tampa Gas Tax, CIT, CRA, Utility Funds & CDBG
 Other3 = future funds as
 ** = Projects that could be implemented sooner through new transportation system surtax

Appendix B (Amended 8/3/10; 1/4/11)

Table B-1 - Cost Affordable Highway, Bicycle, and Pedestrian Projects

SHOWN IN PRESENT DAY COST (PDC) OR YEAR OF EXPENDITURE (YOE) \$ MILLIONS AS NOTED

Project ID	Facility	From	To	Total Project Cost (PDC)	Interim Project Staging (Identified by Phase)						Unfunded Needs (PDC)	Funding Source
					PD&E/PE		ROW		CST			
					Time Period	Cost in YOE	Time Period	Cost in YOE	Time Period	Cost in YOE		
ORB580	US HWY 41	CAUSEWAY	ADAMO DR/SR 60	\$ 0.925	2016-2020	\$ 0.146		\$ -	2016-2020	\$ 1.121	\$ -	OA
ORB900	WHITEWAY DR	50TH STREET	RIVERHILLS DR	\$ 0.570	2016-2020	\$ 0.090		\$ -	2016-2020	\$ 0.691	\$ -	Im Fee TT
Construction Planned During 2021 - 2025												
ORB710	BEARSS AVE	DALE MABRY HWY	22ND ST	\$ 2.755	2021-2025	\$ 0.512		\$ -	2021-2025	\$ 3.924	\$ -	TMA
ORB720	BLOOMINGDALE AVE	BELL SHOALS RD	CADE LN	\$ 0.372	2021-2025	\$ 0.069		\$ -	2021-2025	\$ 0.529	\$ -	TMA
ORB910	DRUID HILLS RD	50TH STREET	RIVERHILLS DR	\$ 0.004	2021-2025	\$ 0.001		\$ -	2021-2025	\$ 0.006	\$ -	Im Fee TT
ORB620	GUNN HWY	CITRUS PARK DR	HENDERSON RD	\$ 0.605	2021-2025	\$ 0.112		\$ -	2021-2025	\$ 0.862	\$ -	TMA
ORB540	HENDERSON RD	LINEBAUGH AVE	GUNN HWY	\$ 0.763	2021-2025	\$ 0.142		\$ -	2021-2025	\$ 1.086	\$ -	TMA
ORB930	RIDGEDALE RD	DRUID HILLS	RIVERHILLS DR	\$ 0.002	2021-2025	\$ 0.000		\$ -	2021-2025	\$ 0.004	\$ -	Im Fee TT
ORT90	SOUTH COAST GREENWAY (PHASE III)	BIG BEND RD	SYMMES ROAD	\$ 0.920	2021-2025	\$ 0.170		\$ -	2021-2025	\$ 1.310	\$ -	TMA
ORT100	SOUTH COAST GREENWAY (PHASE IV)	SR 674	LITTLE MANATEE RIVER	\$ 0.920	2021-2025	\$ 0.170		\$ -	2021-2025	\$ 1.310	\$ -	TMA
ORT130	SOUTH COAST GREENWAY (PHASE V)	MADISON AVE	WILLIAMS PARK	\$ 1.220	2021-2025	\$ 0.230		\$ -	2021-2025	\$ 1.740	\$ -	TMA
ORT140	SOUTH COAST GREENWAY (PHASE VI)	WILLIAMS PARK	GARDENVILLE PARK	\$ 0.920	2021-2025	\$ 0.170		\$ -	2021-2025	\$ 1.310	\$ -	TMA
ORB680	WATERS AVE	ANDERSON RD	DALE MABRY HWY	\$ 0.948	2021-2025	\$ 0.176		\$ -	2021-2025	\$ 1.351	\$ -	TE
ORB730	WATERS AVE	SHELDON RD	ANDERSON RD	\$ 1.301	2021-2025	\$ 0.242		\$ -	2021-2025	\$ 1.853	\$ -	TE
ORT300	WEST TAMPA GREENWAY/BOY SCOUT RD	M L KING BLVD	MEMORIAL HWY	\$ 1.485	2021-2025	\$ 0.276		\$ -	2021-2025	\$ 2.115	\$ -	TE
Construction Planned During 2026 - 2030												
ORB790	BLOOMINGDALE AVE	US HWY 301	BELL SHOALS RD	\$ 0.057	2026-2030	\$ 0.012		\$ -	2026-2030	\$ 0.095	\$ -	TE
ORB670	FLETCHER AVE	N BOULEVARD	22ND ST	\$ 0.953	2021-2025	\$ 0.180		\$ -	2026-2030	\$ 1.590	\$ -	TMA
ORB600	GUNN HWY	N MOBLEY RD	SHELDON RD	\$ 1.137	2026-2030	\$ 0.248		\$ -	2026-2030	\$ 1.901	\$ -	TE
ORB820	LUMSDEN RD	LITHIA PINECREST	DOVER RD	\$ 1.375	2021-2025	\$ 0.255		\$ -	2026-2030	\$ 2.299	\$ -	TMA
ORB700	LUMSDEN RD (alt rte Brooker)	KINGS AVE	LITHIA PINECREST	\$ 0.560	2021-2025	\$ 0.104		\$ -	2026-2030	\$ 0.936	\$ -	TMA
ORB760	M L KING BLVD	BROADWAY AVE	PINE ST	\$ 0.324	2021-2025	\$ 0.060		\$ -	2026-2030	\$ 0.542	\$ -	TE
ORT50	SOUTH TAMPA GREENWAY	FRIENDSHIP TRAIL, MACDILL	BAYSHORE BLVD	\$ 5.501	2026-2030	\$ 1.200		\$ -	2026-2030	\$ 9.198	\$ -	TMA
ORB550	US HWY 301	BALM RIVERVIEW	GORNTO LAKE RD	\$ 0.021	2026-2030	\$ 0.005		\$ -	2026-2030	\$ 0.035	\$ -	OA
ORB570	US HWY 41	PORT SUTTON RD	CAUSEWAY BLVD	\$ 0.520	2026-2030	\$ 0.113		\$ -	2026-2030	\$ 0.870	\$ -	TE
ORB640	VALRICO RD	LITHIA PINECREST RD	SR 60	\$ 1.032	2021-2025	\$ 0.192		\$ -	2026-2030	\$ 1.725	\$ -	TMA
ORT350	WEST TAMPA GREENWAY/COURTNEY CAMPBELL	HILLSBOROUGH COUNTY LINE	VETERANS EXPY.	\$ 3.056	2021-2025	\$ 0.568		\$ -	2026-2030	\$ 5.110	\$ -	TE
Construction Planned During 2031 - 2035												
ORT270	HILLSBOROUGH RIVER GREENWAY	BENEFICIAL STREET BRIDGE	PALM AVENUE	\$ 0.724	2026-2030	\$ 0.158		\$ -	2031-2035	\$ 1.422	\$ -	TE
ORT340	PALM RIVER (NORTH) BYPASS CANAL CONNECTOR	MCKAY BAY GREENWAY	BYPASS CANAL	\$ 0.972	2031-2035	\$ 0.249		\$ -	2031-2035	\$ 1.909	\$ -	TE

Pedestrian Projects

On-Going & Committed Projects												
PEC30	FLORIDA AVE	HARRISON ST	LAKE AVE S	\$ 0.917	Committed	\$ 0.106		\$ -	Committed	\$ 0.811	\$ -	Other2
PEC530	POLK ST	ASHLEY ST	JEFFERSON ST	\$ 0.212	Committed	\$ 0.024		\$ -	Committed	\$ 0.187	\$ -	Other2
SWG20	MAJOR ROAD SEGMENTS IN CITY OF TAMPA WITH SIDEWALKS 100% MISSING			\$ 3.538		\$ -		\$ -	2021-2025	\$ 5.697	\$ -	Other2
SWG20	MAJOR ROAD SEGMENTS IN CITY OF TAMPA WITH SIDEWALKS 100% MISSING			\$ 4.236		\$ -		\$ -	2026-2030	\$ 6.687	\$ -	Other2
SWG20	MAJOR ROAD SEGMENTS IN CITY OF TAMPA WITH SIDEWALKS 100% MISSING			\$ 4.236	2016-2020	\$ 0.956		\$ -	2031-2035	\$ 7.855	\$ -	Other2
SWG10	SEGMENTS IN PLANT CITY WITH SIDEWALKS 100% MISSING			\$ 1.838	2016-2020	\$ 0.291		\$ -	2026-2030	\$ 3.074	\$ -	Ad Val PC
SWG30	SEGMENTS IN TEMPLE TERRACE WITH SIDEWALKS 100% MISSING			\$ 0.484	2021-2025	\$ 0.090		\$ -	2021-2025	\$ 0.690	\$ -	Im Fee TT
Construction Planned During 2016 - 2020												
PEC170	78TH ST	CAUSEWAY BLVD	LEE ROY SELMON	\$ 1.005	2016-2020	\$ 0.159		\$ -	2016-2020	\$ 1.218	\$ -	TE
PEC190	ARMENIA AVE	GREEN ST	M L KING BLVD	\$ 0.899	2016-2020	\$ 0.142		\$ -	2016-2020	\$ 1.090	\$ -	TE
PEC210	BROREIN ST	TAMPA ST	JEFFERSON ST	\$ 0.159	2016-2020	\$ 0.025		\$ -	2016-2020	\$ 0.192	\$ -	TE
PEC290	FLETCHER AVE	I-275	56TH ST	\$ 1.957	2016-2020	\$ 0.310		\$ -	2016-2020	\$ 2.370	\$ -	TE

FUNDING SOURCES:

OA = Other Arterial funds (State & Federal);
 TMA = Transportation Management Area funds (Federal)
 TE = Transportation Enhancement funds (Federal)
 SIS = Strategic Intermodal System funds
 Turnpike = Florida's Turnpike Enterprise Funds
 THEA = Expressway Authority funds
 Sales Tax = Transportation System Surtax

FUNDING SOURCES:

Ad Val HC = Hillsborough County Ad-Valorem
 Ad Val PC = Plant City Ad-Valorem
 Ad Val Ta = Tampa Ad-Valorem
 Ad Val TT - Temple Terrace Ad-Valorem
 Im Fee HC = Hillsborough County Impact Fee
 Im Fee PC = Plant City Impact Fee
 Im Fee Ta = Tampa Impact Fee

FUNDING SOURCES:

Im Fee TT = Temple Terrace Impact Fee
 Developer = Private Development Requirements
 TRIP = Transportation Regional Incentive Program
 Other1 = State Bridge Maintenance funds
 Other2 = City of Tampa Gas Tax, CIT, CRA, Utility Funds & CDBG
 Other3 = future funds as
 ** = Projects that could be implemented sooner through new transportation system surtax

Appendix B (Amended 8/3/10; 1/4/11)

Table B-1 - Cost Affordable Highway, Bicycle, and Pedestrian Projects

SHOWN IN PRESENT DAY COST (PDC) OR YEAR OF EXPENDITURE (YOE) \$ MILLIONS AS NOTED

Project ID	Facility	From	To	Total Project Cost (PDC)	Interim Project Staging (Identified by Phase)						Unfunded Needs (PDC)	Funding Source
					PD&E/PE		ROW		CST			
					Time Period	Cost in YOE	Time Period	Cost in YOE	Time Period	Cost in YOE		
PEC300	FLORIDA AVE	ICE PALACE DR	HARRISON ST	\$ 0.529	2016-2020	\$ 0.084		\$ -	2016-2020	\$ 0.641	\$ -	TMA
PEC40	FOWLER AVE	I-275	56TH ST	\$ 2.032	2016-2020	\$ 0.321		\$ -	2016-2020	\$ 2.463	\$ -	OA
PEC340	HANLEY	HILLSBOROUGH AVE	WATERS AVE	\$ 1.058	2016-2020	\$ 0.167		\$ -	2016-2020	\$ 1.282	\$ -	TE
PEC70	HILLSBOROUGH AVE	MEMORIAL HWY	GEORGE RD	\$ 1.045	2016-2020	\$ 0.165		\$ -	2016-2020	\$ 1.267	\$ -	TE
PEC480	NEBRASKA AVE	WASHINGTON ST	KENNEDY BLVD	\$ 0.106	2016-2020	\$ 0.017		\$ -	2016-2020	\$ 0.128	\$ -	TE
PEC560	ROME AVE	M L KING BLVD	WATERS AVE	\$ 1.587	2016-2020	\$ 0.251		\$ -	2016-2020	\$ 1.923	\$ -	TE
PEC100	SR 60	RIDGEWOOD AVE	VALRICO RD	\$ 0.712	2016-2020	\$ 0.113		\$ -	2016-2020	\$ 0.863	\$ -	TE
PEC120	SR 60 / KENNEDY BLVD	HENDERSON BLVD	CHANNELSIDE DR	\$ 1.640	2016-2020	\$ 0.259		\$ -	2016-2020	\$ 1.987	\$ -	TE
PEC590	SR 674	US HWY 41	CR 579	\$ 4.443	2016-2020	\$ 0.702		\$ -	2016-2020	\$ 5.385	\$ -	TMA
PEC690	ZACK ST	ASHLEY ST	NEBRASKA AVE	\$ 0.317	2016-2020	\$ 0.050		\$ -	2016-2020	\$ 0.385	\$ -	Other2
Construction Planned During 2021 - 2025												
PEC20	DALE MABRY HWY	BAY TO BAY BLVD	COLUMBUS DR	\$ 1.747	2021-2025	\$ 0.325		\$ -	2021-2025	\$ 2.489	\$ -	TMA
PEC60	HILLSBOROUGH AVE	WESTSHORE BLVD	HIMES AVE	\$ 0.659	2021-2025	\$ 0.138		\$ -	2021-2025	\$ 0.922	\$ -	TE
PEC430	LOIS AVE	HENDERSON BLVD	KENNEDY BLVD	\$ 0.635	2016-2020	\$ 0.100		\$ -	2021-2025	\$ 0.904	\$ -	TE
PEC520	PLATT/CHANNELSIDE	ASHLEY ST	FLORIDA AVE	\$ 0.106	2021-2025	\$ 0.020		\$ -	2021-2025	\$ 0.151	\$ -	TMA
PEC90	SR 60	I-75	RIDGEWOOD AVE	\$ 1.602	2016-2020	\$ 0.253		\$ -	2021-2025	\$ 2.282	\$ -	TE
PEC610	TAMPA ST	BROREIN ST	HARRISON ST	\$ 0.370	2021-2025	\$ 0.069		\$ -	2021-2025	\$ 0.527	\$ -	TMA
PEC640	TYLER ST	ASHLEY ST	CASS ST	\$ 0.212	2021-2025	\$ 0.039		\$ -	2021-2025	\$ 0.301	\$ -	TMA
Construction Planned During 2026 - 2030												
PEC160	56TH ST	BULLARD PKWY	FOWLER AVE	\$ 1.322	2026-2030	\$ 0.288		\$ -	2026-2030	\$ 2.211	\$ -	Im Fee TT
PEC165	56TH ST	FOWLER AVE	FLETCHER AVE	\$ 1.900		\$ -		\$ -	2026-2030	\$ 3.590	\$ -	Sales Tax
PEC180	7TH AVE	NEBRASKA AVE	22ND ST	\$ 0.529	2021-2025	\$ 0.098		\$ -	2026-2030	\$ 0.884	\$ -	TE
PEC200	ASHLEY ST	CHANNELSIDE DR	TYLER ST	\$ 0.370	2026-2030	\$ 0.081		\$ -	2026-2030	\$ 0.619	\$ -	TE
PEC230	CASS ST	ASHLEY ST	TYLER ST	\$ 0.212	2026-2030	\$ 0.046		\$ -	2026-2030	\$ 0.354	\$ -	TE
PEC10	DALE MABRY HWY	WATERS AVE	FLETCHER AVE	\$ 1.497	2026-2030	\$ 0.326		\$ -	2026-2030	\$ 2.502	\$ -	TE
PEC370	HARRISON ST	TAMPA ST	FRANKLIN ST	\$ 0.032	2026-2030	\$ 0.007		\$ -	2026-2030	\$ 0.053	\$ -	TMA
PEC410	JACKSON ST	ASHLEY ST	MERIDIAN ST	\$ 0.370	2026-2030	\$ 0.081		\$ -	2026-2030	\$ 0.619	\$ -	TMA
PEC470	MORGAN ST	ST PETE TIMES FORUM DR	HARRISON ST	\$ 0.476	2026-2030	\$ 0.104		\$ -	2026-2030	\$ 0.796	\$ -	Other2
PEC490	PALM AVE	FLORIDA AVE	22ND ST	\$ 0.793	2026-2030	\$ 0.173		\$ -	2026-2030	\$ 1.327	\$ -	TMA
PEC500	PIERCE ST	WHITING ST	CASS ST	\$ 0.212	2026-2030	\$ 0.046		\$ -	2026-2030	\$ 0.354	\$ -	TMA
PEC570	ROME AVE	KENNEDY BLVD	COLUMBUS DR	\$ 0.707	2021-2025	\$ 0.149		\$ -	2026-2030	\$ 1.163	\$ -	TE
PEC400	ST PETE TIMES FORUM DR	FRANKLIN ST	GUNN ST	\$ 0.212	2026-2030	\$ 0.046		\$ -	2026-2030	\$ 0.354	\$ -	TMA
PEC620	TEMPLE TERRACE HWY	MORRIS BRIDGE RD	HARNEY RD	\$ 0.159	2026-2030	\$ 0.035		\$ -	2026-2030	\$ 0.265	\$ -	TE
PEC130	US 301	BROADWAY AVE	ML KING BLVD	\$ 0.507	2021-2025	\$ 0.094		\$ -	2026-2030	\$ 0.848	\$ -	TE
PEC670	WESTSHORE BLVD	INTERBAY BLVD	GANDY BLVD	\$ 1.005	2021-2025	\$ 0.187		\$ -	2026-2030	\$ 1.680	\$ -	TE
Construction Planned During 2031 - 2035												
PEC380	HENDERSON BLVD	LOIS AVE	KENNEDY BLVD	\$ 0.899	2031-2035	\$ 0.230		\$ -	2031-2035	\$ 1.766	\$ -	TE
PEC700	TOWN N COUNTRY AREA - (PAULA DR: AND AMBASSADOR RD)			\$ 3.500		\$ -		\$ -	2031-2035	\$ 7.770	\$ -	Sales Tax
Revenue Transfers												
	Transfer for Transit Projects			\$ 57.725		\$ -		\$ -	Continuous	\$ 84.500	\$ -	TMA
	Transfer for Transit Projects			\$ 11.847		\$ -		\$ -	Continuous	\$ 18.600	\$ -	TRIP
	Transfer for Transit Projects			\$ 56.751		\$ -		\$ -	Continuous	\$ 93.200	\$ -	OA

FUNDING SOURCES:

OA = Other Arterial funds (State & Federal);
 TMA = Transportation Management Area funds (Federal)
 TE = Transportation Enhancement funds (Federal)
 SIS = Strategic Intermodal System funds
 Turnpike = Florida's Turnpike Enterprise Funds
 THEA = Expressway Authority funds
 Sales Tax = Transportation System Surtax

FUNDING SOURCES:

Ad Val HC = Hillsborough County Ad-Valorem
 Ad Val PC = Plant City Ad-Valorem
 Ad Val Ta = Tampa Ad-Valorem
 Ad Val TT = Temple Terrace Ad-Valorem
 Im Fee HC = Hillsborough County Impact Fee
 Im Fee PC = Plant City Impact Fee
 Im Fee Ta = Tampa Impact Fee

FUNDING SOURCES:

Im Fee TT = Temple Terrace Impact Fee
 Developer = Private Development Requirements
 TRIP = Transportation Regional Incentive Program
 Other1 = State Bridge Maintenance funds
 Other2 = City of Tampa Gas Tax, CIT, CRA, Utility Funds & CDBG
 Other3 = future funds as
 ** = Projects that could be implemented sooner through new transportation system surtax

Appendix C (Amended 8/3/10; 1/4/11)

Cost Affordable Highway Projects and Unfunded Needs (Including ITS, Operations, and Project Transfers)

SHOWN IN PRESENT DAY COST (PDC) \$ MILLIONS

Project ID	Facility	From	To	Project Description	Owner	Improvement Type		Total Funded Cost	Total Unfunded Cost	Notes
						Existing or Committed Lanes	2035 Lanes			
H10	131st Ave	Nebraska Ave	30th St	2 Lanes Undivided to 4 Lanes Divided	County	2U	4D	\$ -	\$ 45.680	
H20	22nd St	Hillsborough Ave	21st Ave	2 Lanes Undivided to 2 Lanes Enhanced	County	2U	2E	\$ 9.800	\$ -	
H30	22nd St	Riverhills Dr	Fowler Ave	2 Lanes Undivided to 2 Lanes Enhanced	County	2U	2E	\$ 11.000	\$ -	
H35	22nd St	Club Dr	Fletcher Ave	2 Lanes Undivided to 2 Lanes Enhanced	Tampa	2U	2E	\$ 3.600	\$ -	
H40	24th St	SR 674	19th Ave Ne	No Existing Lanes to 4 Lanes Divided	County	00	4D	\$ -	\$ 44.254	
H50	24th St	19th Ave NE	Big Bend Rd	No Existing Lanes to 4 Lanes Divided	County	00	4D	\$ 72.752	\$ -	
H60	30th St	SR 674	19th Ave NE	2 Lanes Undivided to 4 Lanes Divided	County	2U	4D	\$ -	\$ 29.374	
H70	30th St	19th Ave	Apollo Beach Blvd	No Existing Lanes to 4 Lanes Divided	County	00	4D	\$ 69.945	\$ -	
H75	40th St (Reimbursement)	Hillsborough Ave	Diana St	2 Lanes Undivided to 4 Lanes Divided	County	2U	4D	\$ 18.719	\$ -	
H77	40th St (Reimbursement)	Diana St	Hanlon St	2 Lanes Undivided to 4 Lanes Divided	County	2U	4D	\$ 2.705		
H79	40th St (Reimbursement)	Hanlon St	Yukon St	2 Lanes Undivided to 4 Lanes Divided	County	2U	4D	\$ 8.651		
H80	46th St	Fletcher Ave	Skipper Rd	2 Lanes Undivided to 4 Lanes Divided	County	2U	4D	\$ -	\$ 23.048	
H90	78th St	Madison Ave	Causeway Blvd	2 Lanes Undivided to 2 Lanes Enhanced	County	2U	2E	\$ 4.264	\$ -	
H95	78th St	Harney Rd	Temple Terrace Hwy	2 Lanes Undivided to 2 Lanes Enhanced	Temple Terrace	2U	2E	\$ 3.000	\$ -	
H100	7th Ave	22nd St	50th St	4 Lanes Undivided to 2 Lanes Enhanced	Tampa	4U	2E	\$ 8.000	\$ -	
H120	Anderson Rd	Sligh Ave	Linebaugh Ave	4 Lanes Divided to 6 Lanes Divided	County	4D	6D	\$ -	\$ 77.374	
H130	Apollo Beach Blvd Ext	US 41	I-75	No Existing Lanes to 4 Lanes Divided	County	00	4D	\$ 35.000	\$ -	
H135	Apollo Beach Blvd Ext	I-75	US 301	No Existing Lanes to 4 Lanes Divided	County	00	4D	\$ 52.474	\$ -	
H140	Armenia Ave	Waters Ave	Busch Blvd	2 Lanes Undivided to 4 Lanes Divided	County	2U	4D	\$ -	\$ 16.543	
H145	Armenia Ave	Sligh Ave	Waters Ave	2 Lanes Undivided to 2 Lanes Enhanced	Tampa	2U	2E	\$ 2.408	\$ -	
H150	Armenia Ave	Tampa Bay Blvd	Sligh Ave	4 Lanes Undivided to 4 Lanes Enhanced	County	4U	4E	\$ 5.919	\$ -	
H160	Armenia Ave	Busch Blvd	Fletcher Ave	2 Lanes Undivided to 2 Lanes Enhanced	County	2U	2E	\$ 6.877	\$ -	
H170	Balm-Riverview Rd	US Hwy 301	Rhodine Rd	2 Lanes Undivided to 2 Lanes Enhanced	County	2U	2E	\$ -	\$ 9.815	
H180	Bell Shoals Rd	Boyette Rd	Bloomingtondale Ave	2 Lanes Undivided to 4 Lanes Divided	County	2U	4D	\$ 30.000	\$ -	
H190	Bell Shoals Rd	Bloomingtondale Ave	Lithia Pinecrest Rd	2 Lanes Undivided to 2 Lanes Enhanced	County	2U	2E	\$ 5.237	\$ -	
H200	Benjamin Rd	Hillsborough Ave	Waters Ave	2 Lanes Undivided to 4 Lanes Divided	County	2U	4D	\$ -	\$ 59.877	
H210	Big Bend Rd	US Hwy 41	Covington Garden Dr	4 Lanes Divided to 6 Lanes Divided	County	4D	6D	\$ -	\$ 55.968	
H215	Big Bend Rd	Covington Garden Dr	I-75 N Ramp	4 Lanes Divided to 6 Lanes Divided	County	4D	6D	\$ 9.000	\$ -	
H220	Big Bend Rd	I-75 N Ramp	Simmons Loop Rd	4 Lanes Divided to 6 Lanes Divided	County	4D	6D	\$ 5.500	\$ -	
H222	Big Bend Rd	Simmons Loop Rd	US Hwy 301	4 Lanes Divided to 6 Lanes Divided	County	4D	6D	\$ 12.000	\$ -	
H224	Big Bend Rd	US Hwy 301	Summerfield Blvd	4 Lanes Divided to 6 Lanes Divided	County	4D	6D	\$ -	\$ 46.554	
H230	Big Bend Rd	Summerfield Blvd	Balm Riverview Rd	2 Lanes Undivided to 6 Lanes Divided	County	2U	6D	\$ -	\$ 49.801	
H240	Big Bend Rd Ext	Balm Riverview Rd	Boyette Rd	No Existing Lanes to 2 Lanes Undivided	County	00	2U	\$ 66.601	\$ -	
H250	Bloomingtondale Ave	Lithia Pinecrest Rd	Little Rd	2 Lanes Undivided to 4 Lanes Divided	County	2U	4D	\$ -	\$ 43.571	
H260	Bloomingtondale Ave Ext	Little Rd	Turkey Creek Rd	No Existing Lanes to 2 Lanes Divided	County	00	2D	\$ -	\$ 84.391	
H270	Bougainvillea Ave	30th St	Mckinley Dr	2 Lanes Undivided to 4 Lanes Divided	Tampa	2U	4D	\$ -	\$ 18.088	
H275	Boyette Rd	Balm Riverview Rd	Bell Shoals Rd	2 Lanes Undivided to 4 Lanes Divided	County	2U	4D	\$ 36.000	\$ -	
H280	Bridge St	Tyson St	Gandy Blvd	No Existing Lanes to 2 Lanes Divided	Tampa	00	2D	\$ 9.775	\$ -	
H290	Broadway Ave	Falkenburg Rd	M L King Blvd	2 Lanes Undivided to 4 Lanes Divided	County	2U	4D	\$ -	\$ 59.728	
H300	Bruce B Downs Blvd	Bearss Ave	Palm Springs Blvd	4 Lanes Divided to 8 Lanes Divided	County	4D	8D	\$ 30.482	\$ -	
H305	Bruce B Downs Blvd	Palm Springs Blvd	Pebble Creek Dr	4 Lanes Divided to 8 Lanes Divided	County	4D	8D	\$ 128.804	\$ -	
H310	Bruce B Downs Blvd	Pebble Creek Dr	County Line Rd	4 Lanes Divided to 6 Lanes Divided	County	4D	6D	\$ 15.200	\$ -	
H320	Busch Blvd	N Blvd	Florida Ave	4 Lanes Divided to 6 Lanes Divided	State	4D	6D	\$ -	\$ 17.394	
H340	Camden Field Pkwy	US Hwy 41	Falkenburg Rd	No Existing Lanes to 2 Lanes Undivided	County	00	2U	\$ -	\$ 40.754	
H344	Cass St	Ashley St	Tyler St	2 Lanes Undivided to 2 Lanes Enhanced	Tampa	2U	2E	\$ 0.906	\$ -	
H350	Cass/Tyler/Jackson/Pierce/Orange St Traffic Circles			Traffic Circles	Tampa			\$ -	\$ 5.000	
H360	Causeway Blvd	Maritime Blvd	50th St	4 Lanes Divided to 6 Lanes Divided	State	4D	6D	\$ 81.364	\$ -	
H370	Citrus Park Ext	Linebaugh Ave	Country Way Blvd	No Existing Lanes to 4 Lanes Divided	County	00	4D	\$ -	\$ 18.602	
H375	Citrus Park Ext	Country Way Blvd	Sheldon Rd	No Existing Lanes to 4 Lanes Divided	County	00	4D	\$ 56.000	\$ -	
ITS40	City of Plant City	Advanced Traffic Management System		Intelligent Transportation Systems	Plant City		ITS	\$ 1.970	\$ -	
ITS10	City of Tampa	Advanced Traffic Management System		Intelligent Transportation Systems	Tampa		ITS	\$ 8.250	\$ -	
H380	Columbus Dr Ext	Regional Water Ln	Falkenburg Rd	No Existing Lanes to 4 Lanes Divided	County	00	4D	\$ -	\$ 27.325	

Appendix C (Amended 8/3/10; 1/4/11)

Cost Affordable Highway Projects and Unfunded Needs (Including ITS, Operations, and Project Transfers)

SHOWN IN PRESENT DAY COST (PDC) \$ MILLIONS

Project ID	Facility	From	To	Project Description	Owner	Improvement Type		Total Funded Cost	Total Unfunded Cost	Notes
						Existing or Committed Lanes	2035 Lanes			
H390	County Line Rd	Swindell Rd	Knights Griffin Rd	No Existing Lanes to 4 Lanes Divided	County	00	4D	\$ -	\$ 67.125	
H410	County Line Rd (Polk)	SR60	Trapnell Rd	2 Lanes Undivided to 4 Lanes Divided	County	2U	4D	\$ 62.907	\$ -	
H2110	Countywide Intersection Projects				County	Intersection Improvements		\$ 106.000	\$ -	
OP1	Countywide Road Safety and Support for Maintenance				County			\$ 4.000	\$ -	
ITS20	Courtney Campbell Cswy	Pinellas County	Veterans Expy.	Freeway Management	State		ITS	\$ 3.350	\$ -	
H420	CR 39 (Alexander)	I-4	Knights Griffin Rd	No Existing Lanes to 4 Lanes Divided	State	00	4D	\$ 29.900	\$ -	
H430	CR 579	US 92	I-4	4 Lanes Divided to 6 Lanes Divided	County	4D	6D	\$ -	\$ 10.576	
H450	Crenshaw Lake Rd	Simmons Rd	US Hwy 41	2 Lanes Undivided to 2 Lanes Enhanced	County	2U	2E	\$ -	\$ 1.494	
H460	Cross Creek Blvd	Cory Lake Isles	Morris Bridge Rd	2 Lanes Undivided to 4 Lanes Divided	Tampa	2U	4D	\$ 5.330	\$ -	
H470	Cumberland St	Caeser St	Meridian St	No Existing Lanes to 2 Lanes Divided	Tampa	00	2D	\$ -	\$ 1.574	
H480	Dale Mabry Frt Rd E/W	Van Dyke Rd	US Hwy 41	No Existing Lanes to 2 Lanes Undivided	State	00	2U	\$ 2.000	\$ 314.800	Design funded; ROW and CST unfunded
H490	Dale Mabry Hwy	Van Dyke Rd	Cheval Blvd	4 Lanes Divided to 6 Lanes Divided	State	4D	6D	\$ -	\$ 34.720	
H510	Euclid Ave	Dale Mabry Hwy	Bayshore Blvd	2 Lanes Undivided to 2 Lanes Enhanced	Tampa	2U	2E	\$ 2.122	\$ -	
H520	Falkenburg Rd	78th St	Eagle Palm	2 Lanes Undivided to 4 Lanes Divided	County	2U	4D	\$ 45.799	\$ -	
H530	Falkenburg Rd	Bryan Rd	Hillsborough Ave	2 Lanes Undivided to 4 Lanes Divided	County	2U	4D	\$ 21.295	\$ -	
H550	Fishhawk Blvd	Bell Shoals Rd	Lithia Pinecrest	2 Lanes Undivided to 4 Lanes Divided	County	2U	4D	\$ 136.475	\$ -	
H560	Fletcher Ave	30th St	Morris Bridge Rd	4 Lanes Divided to 6 Lanes Divided	County	4D	6D	\$ -	\$ 147.624	
H570	Florida Ave	Violet	Waters Ave	4 Lanes Undivided to 4 Lanes Enhanced	State	4U	4E	\$ 5.098	\$ -	
ITS30	Gandy Blvd	Pinellas County	Lee Roy Selmon	Freeway Management	State		ITS	\$ 2.300	\$ -	
H580	Gandy Blvd - (Elev. Structure)	Dale Mabry Hwy	Gandy Bridge	No Existing Lanes to 2 Lanes Freeway	State	00	2F	\$ 115.120	\$ -	
H590	George Rd	Memorial Hwy	Hillsborough Ave	2 Lanes Undivided to 4 Lanes Divided	County	2U	4D	\$ -	\$ 30.265	
H600	Gibsonton Dr	I-75 S Ramp	Us Hwy 301	4 Lanes Divided to 6 Lanes Divided	County	4D	6D	\$ -	\$ 54.587	
H610	Gornto Lake Rd	Providence Ridge Blvd	Providence Lakes Ext	2 Lanes Undivided to 4 Lanes Divided	County	2U	4D	\$ -	\$ 23.345	
H620	Gornto Lake Rd	Brandon Town Center	SR 60	No Existing Lanes to 4 Lanes Divided	County	00	4D	\$ 8.000	\$ -	
H630	Gunn Hwy	Pasco County Line	S Mobley Rd	2 Lanes Undivided to 2 Lanes Enhanced	County	2U	2E	\$ -	\$ 0.555	
H650	Gunn Hwy	Ehrlich Rd	Citrus Park Dr	2 Lanes Undivided to 2 Lanes Enhanced	County	2U	2E	\$ 0.964	\$ -	
H660	Gunn Hwy	Citrus Park Dr	Dale Mabry Overpass	4 Lanes Divided to 6 Lanes Divided	County	4D	6D	\$ -	\$ 169.720	
H670	Hanna Ave	Nebraska Ave	56th St	2 Lanes Undivided to 2 Lanes Enhanced	Tampa	2U	2E	\$ 9.303	\$ -	
H680	Harney Rd	56th St	Temple Terrace Hwy	2 Lanes Undivided to 4 Lanes Divided	County	2U	4D	\$ -	\$ 150.138	
H690	Henderson Blvd	Bay to Bay Blvd	Lois Ave	4 Lanes Undivided to 4 Lanes Enhanced	County	4U	4E	\$ 1.624	\$ -	
H700	Henderson Blvd	Lois Ave	Kennedy Blvd	4 Lanes Undivided to 4 Lanes Enhanced	Tampa	4U	4E	\$ 4.885	\$ -	
H710	Hillsborough Ave	Highland Ave	Nebraska Ave	4 Lanes Divided to 6 Lanes Divided	State	4D	6D	\$ -	\$ 22.694	
H720	Hillsborough Ave	50th St	Orient Rd	4 Lanes Divided to 6 Lanes Divided	State	4D	6D	\$ 59.860	\$ -	
ITS50	Hillsborough County	Advanced Traffic Management System		Intelligent Transportation Systems	County		ITS	\$ 2.400	\$ -	
ITS60	Hillsborough County	Traffic Management Center		Intelligent Transportation Systems	County		ITS	\$ 4.413	\$ -	
H730	Himes Ave	Hillsborough Ave	Busch Blvd	2 Lanes Undivided to 4 Lanes Divided	County	2U	4D	\$ -	\$ 82.390	
H740	Hoover Blvd	Hillsborough Ave	Sligh Ave	4 Lanes Divided to 6 Lanes Divided	County	4D	6D	\$ -	\$ 38.305	
H741	I-275	Howard Frankland Bridge	Himes Ave	6 Lane Freeway to 8 Lane Freeway	State	6F	8F	\$ 63.498	\$ -	
H742	I-275	SR 60 (Memorial Hwy)	Himes Ave	6 Lane Freeway to 8 Lane Freeway	State	6F	8F	\$ 277.823	\$ -	
H744	I-275	NB I-275 Off Ramp to SR 60 Airport Flyover		Interchange Modification	State	Modify Interchange		\$ 26.000	\$ -	
H746	I-275	Himes Ave	Hillsborough River	6 Lane Freeway to 8 Lane Freeway	State	6F	8F	\$ 115.181	\$ -	
H750	I-275	Ashley St	I-4 Interchange	8 Lane Freeway to 12 Lane Freeway	State	8F	12F	\$ -	\$ 79.420	
H760	I-275	I-4 Interchange	S of Osborne	Interchange	State	Modify Interchange		\$ -	\$ 1,398.378	
H770	I-275	S of Osborne	N of Fowler	8 Lns Frwy to 10 Lns + 2 Special Use Lns	State	8F	10F+2SUL	\$ -	\$ 480.023	
H780	I-275	N of Fowler	N of Fletcher	6 Lns Frwy to 8 Lns + 2 Special Use Lns	State	6F	8F+2SUL	\$ -	\$ 48.499	
H790	I-275	N of Fletcher	I-75	6 Lns Frwy to 6 Lns + 2 Special Use Lns	State	6F	6F+2SUL	\$ -	\$ 187.297	
H792	I-275	At Fletcher Ave	Interchange	Interchange	State	Modify Interchange		\$ -	\$ 1.600	
H795	I-275	N of US 41	North of Livingston	4 Lane Freeway to 6 Lane Freeway	State	4F	6F	\$ 23.803	\$ -	
H797	I-275	North of Livingston	I-75	4 Lane Freeway to 6 Lane Freeway	State	4F	6F	\$ 12.742	\$ -	
H800	I-275	W of Kennedy Ramps	Memorial Hwy Bridge	6 Lane Freeway to 8 Lane Freeway	State	6F	8F	\$ 5.247	\$ 24.770	Design and ROW funded; CST unfunded
H810	I-275	Howard Frankland Bridge		Bridge Replacement	State	Bridge Replacement		\$ 259.050	\$ -	

Appendix C (Amended 8/3/10; 1/4/11)

Cost Affordable Highway Projects and Unfunded Needs (Including ITS, Operations, and Project Transfers)

SHOWN IN PRESENT DAY COST (PDC) \$ MILLIONS

Project ID	Facility	From	To	Project Description	Owner	Improvement Type		Total Funded Cost	Total Unfunded Cost	Notes
						Existing or Committed Lanes	2035 Lanes			
ITS70	I-275	Howard Frankland Br	Hillsborough River	Freeway Management	State		ITS	\$ 4.490	\$ -	
ITS80	I-275	Bearss Ave	I-75	Freeway Management	State		ITS	\$ 5.261	\$ -	
H820	I-4	50th St	County Line Rd	6 Lns Frwy to 6 Lns + 4 Special Use Lns	State	6F	6F+4SUL	\$ 3.210	\$ 392.600	Design funded; ROW and CST unfunded
H822	I-4	At US 301	Interchange	Interchange	State	Modify Interchange		\$ -	\$ 0.750	
H825	I-4 Crosstown Connector	Selmon Expressway	I-4	New 4 Lane Freeway	State	00	4F	\$ 392.496	\$ -	
H835	I-75	Gibsonton Dr	I-4	8 Lns Frwy to 8 Lns + 4 Special Use Lns	State	8F	8F+4SUL	\$ -	\$ 873.836	
H830	I-75	Manatee County	Gibsonton Dr	6 Lns Frwy to 6 Lns + 4 Special Use Lns	State	6F	6F+4SUL	\$ -	\$ 1,018.542	
H840	I-75	At I-4	Interchange	Interchange	State	Modify Interchange		\$ 12.814	\$ 52.140	Design and ROW funded; CST unfunded
H850	I-75	N of I-4	S of Fowler Ave	6 Lns Frwy to 6 Lns + 4 Special Use Lns	State	6F	6F+4SUL	\$ 30.307	\$ 87.290	Design and ROW funded; CST unfunded
H852	I-75	S of Fowler Ave	N of Bruce B Downs Blvd	4 Lane Freeway to 6 Lane Freeway	State	4F	6F	\$ 100.587	\$ -	
H855	I-75	N of Bruce B Downs Blvd	S of SR 56	4 Lane Freeway to 6 Lane Freeway	State	4F	6F	\$ 37.768	\$ -	
H857	I-75	At Big Bend Rd	Interchange	Interchange	State	Modify Interchange		\$ 40.000	\$ -	
H859	I-75	At Gibsonton Drive	Interchange	Interchange	State	Modify Interchange		\$ 25.000	\$ -	
ITS85	I-75	Manatee County	Bloomingdale Ave	Freeway Management	State		ITS	\$ 0.593	\$ 3.500	
ITS90	I-75	Fowler Ave	I-275	Freeway Management	State		ITS	\$ 4.560	\$ -	
H860	Independence Pkwy	Memorial Hwy	Veteran's Expressway	4 Lanes Divided to 6 Lanes Divided	Tampa	4D	6D	\$ 60.737	\$ -	
H880	James Redman Pkwy	NB & SB Right Turn Lanes at Alexander St		4 Lanes Divided to 4 Lanes Enhanced	State	4D	4E	\$ -	\$ 1.000	
H890	Jim Johnson Ext	Jim Johnson Rd	Trapnell Rd	No Existing Lanes to 4 Lanes Divided	County	00	4D	\$ -	\$ 33.503	
H900	Jim Johnson Rd	Jap Tucker Rd	Alexander Rd	2 Lanes Undivided to 4 Lanes Divided	County	2U	4D	\$ -	\$ 13.128	
H910	John Moore Rd	Bloomingdale Ave	Lumsden Rd	2 Lanes Undivided to 2 Lanes Enhanced	County	2U	2E	\$ 5.364	\$ -	
H920	Kennedy Blvd/SR 60	Memorial Hwy	Church St	6 Lanes Divided to 6 Lanes Enhanced	State	6D	6E	\$ 3.584	\$ -	
H930	Kennedy Blvd/SR 60	Church St	Ashley St	4 Lanes Divided to 4 Lanes Enhanced	State	4D	4E	\$ 7.863	\$ -	
H940	Kennedy Blvd/West	Hoover Blvd	Memorial Hwy	4 Lanes Divided to 6 Lanes Divided	State	4D	6D	\$ -	\$ 10.158	
H950	Kings Ave	SR 60/Brandon Blvd	Victoria St	2 Lanes Undivided to 2 Lanes Enhanced	County	2U	2E	\$ 1.347	\$ -	
H960	Kingsway Rd	SR 60/Brandon Blvd	M L King Blvd	2 Lanes Undivided to 2 Lanes Enhanced	County	2U	2E	\$ 8.188	\$ -	
H980	Knights Griffin Rd	US Hwy 301	Stacy Rd	No Existing Lanes to 4 Lanes Divided	County	00	4D	\$ -	\$ 5.949	
H990	Knights Griffin Rd	SR 39	Polk County	2 Lanes Undivided to 4 Lanes Divided	County	2U	4D	\$ -	\$ 149.336	
H1000	Lee Roy Selmon Expwy	Florida Ave	22nd St	4 Lanes Divided to 6 Lanes Divided	THEA	4D	6D	\$ 135.600	\$ -	
H1010	Linebaugh Ave	Sheldon Rd	Dale Mabry Hwy	4 Lanes Divided to 6 Lanes Divided	County	4D	6D	\$ -	\$ 178.079	
H1020	Linebaugh Ave	Race Track Rd	Countryway Blvd	2 Lanes Undivided to 4 Lanes Divided	County	2U	4D	\$ -	\$ 45.264	
H1030	Linebaugh Ave	N Blvd	Nebraska Ave	2 Lanes Undivided to 2 Lanes Enhanced	Tampa	2U	2E	\$ -	\$ 2.661	
H1042	Lithia Pinecrest Rd	Lumsden Rd	Bloomingdale Ave	2 Lanes Undivided to 4 Lanes Divided	County	2U	4D	\$ -	\$ 82.000	
H1043	Lithia Pinecrest Rd	Lumsden Rd	Bloomingdale Ave	2 Lanes Undivided to 2 Lanes Enhanced	County	2U	2E	\$ 7.701	\$ -	
H1044	Lithia Pinecrest Rd	Bloomingdale Ave	Adelaide Dr	2 Lanes Undivided to 4 Lanes Divided	County	2U	4D	\$ 20.000	\$ -	
H1046	Lithia Pinecrest Rd	Adelaide Dr	Fishawk Trails	2 Lanes Undivided to 4 Lanes Divided	County	2U	4D	\$ 75.000	\$ -	
H1040	Lithia Pinecrest Rd	SR 60	Lumsden Rd	2 Lanes Undivided to 2 Lanes Enhanced	County	2U	2E	\$ 8.300	\$ -	
H1050	Livingston Ave	Bearss Rd	Vandervort Rd	2 Lanes Undivided to 4 Lanes Divided	County	2U	4D	\$ -	\$ 59.966	
H1060	Lois Ave	Tampa Bay Blvd	Hillsborough Ave	2 Lanes Undivided to 4 Lanes Divided	Tampa	2U	4D	\$ -	\$ 45.026	
H1070	Lois Ave	Kennedy Blvd	Boy Scout Blvd	4 Lanes Divided to 4 Lanes Enhanced	Tampa	4D	4E	\$ 3.132	\$ -	
H1080	Lumsden Rd	S Mulrennan Rd	Dover Rd	No Existing Lanes to 2 Lanes Undivided	County	00	2U	\$ -	\$ 11.972	
H1090	Lumsden Rd	Lithia Pinecrest	Valrico Rd	2 Lanes Undivided to 4 Lanes Divided	County	2U	4D	\$ -	\$ 31.250	
H1100	Lutz Lake Fern Rd	Suncoast Pkwy	Dale Mabry Hwy	2 Lanes Undivided to 4 Lanes Divided	County	2U	4D	\$ 71.729	\$ -	
H1110	Lynn Turner	Ehrlich Rd	Hutchinson Rd	No Existing Lanes to 2 Lanes Undivided	County	00	2U	\$ -	\$ 18.680	
H1120	M L King Blvd	Alexander St	Wheeler St	2 Lanes Undivided to 4 Lanes Divided	State	2U	4D	\$ -	\$ 22.905	
H1130	M L King Blvd	40th St	I-4	2 Lanes Undivided to 4 Lanes Divided	State	2U	4D	\$ -	\$ 48.670	
H1150	M L King Blvd	Mcintosh Rd	Sammonds Rd	2 Lanes Undivided to 2 Lanes Enhanced	State	2U	2E	\$ 9.717	\$ -	
H1160	MacDill Ave	MacDill AFB	Bay To Bay Blvd	2 Lanes Undivided to 2 Lanes Enhanced	Tampa	2U	2E	\$ 8.930	\$ -	
H1164	MacDill Ave	Bay to Bay Blvd	Columbus Dr	4 Lanes Undivided to 4 Lanes Enhanced	Tampa	4U	4E	\$ 7.567	\$ -	
H1167	MacDill Ave	Columbus Dr	M L King Blvd	2 Lanes Undivided to 2 Lanes Enhanced	Tampa	2U	2E	\$ -	\$ 2.354	
H1170	Madison Ave	US 41	66th St	2 Lanes Undivided to 4 Lanes Divided	County	2U	4D	\$ 35.399	\$ -	

Appendix C (Amended 8/3/10; 1/4/11)

Cost Affordable Highway Projects and Unfunded Needs (Including ITS, Operations, and Project Transfers)

SHOWN IN PRESENT DAY COST (PDC) \$ MILLIONS

Project ID	Facility	From	To	Project Description	Owner	Improvement Type		Total Funded Cost	Total Unfunded Cost	Notes
						Existing or Committed Lanes	2035 Lanes			
H1175	Madison Ave	66th St	78th St	2 Lanes Undivided to 4 Lanes Divided	County	2U	4D	\$ -	\$ 21.684	
H1180	Manhattan Ave	Henry Ave	Sligh Ave	2 Lanes Undivided to 2 Lanes Enhanced	County	2U	2E	\$ 1.922	\$ -	
H1190	Manhattan Ave	Euclid Ave	Henderson Rd	4 Lanes Undivided to 4 Lanes Enhanced	County	4U	4E	\$ -	\$ 163.972	
H1200	Maritime Blvd	Hookers Point	20th St	2 Lanes Undivided to 2 Lanes Enhanced	Tampa	2U	2E	\$ 3.196	\$ -	
H1210	Maydell Dr	Causeway Blvd	Adamo Dr	2 Lanes Undivided to 2 Lanes Enhanced	County	2U	2E	\$ 5.329	\$ -	
H1215	Meadow Pointe Rd	Oak Preserve Blvd	Pasco County Line	No Existing Lanes to 2 Lanes Undivided	Tampa	00	2U	\$ 20.098	\$ -	
H1220	Midway Rd	Alexander St Ext	County Line Rd	No Existing Lanes to 4 Lanes Divided	Plant City	00	4D	\$ -	\$ 123.791	
H1230	Miller Mac Rd	Gulf And Sea Blvd	US 41	2 Lanes Undivided to 2 Lanes Enhanced	County	2U	2E	\$ -	\$ 3.700	
H1240	Montague St	Manassas Rd	Tate Ln	No Existing Lanes to 2 Lanes Undivided	County	00	2U	\$ -	\$ 2.820	
H1250	Montague St	Lake Chase Island Way	Citrus Park Ext	No Existing Lanes to 2 Lanes Undivided	County	00	2U	\$ -	\$ 4.939	
H1260	Morris Bridge Rd	I-75	Cross Creek Blvd	2 Lanes Undivided to 2 Lanes Enhanced	County	2U	2E	\$ -	\$ 13.539	
MPO	MPO Data Collection & Analysis (Annually)							\$ 10.800	\$ -	
H1270	N/S Cargo Road	Tampa Bay Blvd	Hillsborough Ave	No Existing Lanes to 2 Lanes Divided	Tampa	00	2D	\$ 12.910	\$ -	
H1280	N/S Road	Citrus Park Ext	S Mobley Rd	No Existing Lanes to 2 Lanes Undivided	County	00	2U	\$ -	\$ 35.961	
H1290	Nebraska	Hillsborough Ave	Busch Blvd	4 Lanes Undivided to 4 Lanes Enhanced	State	4U	4E	\$ 6.679	\$ -	
H1300	New E/W Rd	Montague St	Sheldon Rd	No Existing Lanes to 2 Lanes Undivided	County	00	2U	\$ -	\$ 18.935	
H1310	New E/W Rd (New Tampa)	I-275	Commerce Park Blvd	No Existing Lanes to 4 Lanes Divided	Tampa	00	4D	\$ -	\$ 86.578	
H1315	New Tampa Blvd	Commerce Park Blvd	Meadow Pine Dr	No Existing Lanes to 4 Lanes Divided	Tampa	00	4D	\$ 8.050	\$ -	
H1320	New Tampa Blvd	Meadow Pine Dr	Bruce B Downs Blvd	2 Lanes Undivided to 4 Lanes Divided	Tampa	2U	4D	\$ -	\$ 50.640	
H1330	North Blvd	Kennedy Blvd	M L King Blvd	4 Lanes Undivided to 2 Lanes Enhanced	Tampa	4U	2E	\$ -	\$ 11.000	
H1340	Northdale Blvd	Claywell Elementary	Dawnview Dr	4 Lanes Undivided to 4 Lanes Enhanced	County	4U	4E	\$ -	\$ 1.801	
H1365	Oak Preserve Blvd	Kinnan St	Morris Bridge Rd	No Existing Lanes to 4 Lanes Divided	Tampa	00	4D	\$ 94.952	\$ -	
H1350	Oakfield Dr	Lakewood Dr	Kings Ave	4 Lanes Undivided to 4 Lanes Enhanced	County	4U	4E	\$ 2.663	\$ -	
H1360	Oakfield Dr	Kings Ave	Parsons Ave	2 Lanes Undivided to 4 Lanes Divided	County	2U	4D	\$ -	\$ 16.335	
H1370	Obrien St	Cypress St	Spruce St	2 Lanes Undivided to 4 Lanes Divided	Tampa	2U	4D	\$ 1.773	\$ -	
H1380	Old Memorial Hwy	Hillsborough Ave	Waters Ave	2 Lanes Undivided to 4 Lanes Divided	County	2U	4D	\$ -	\$ 31.602	
H1390	Orient Rd	Broadway Ave	I-4	2 Lanes Undivided to 4 Lanes Divided	County	2U	4D	\$ -	\$ 45.650	
H1400	Palm River Rd	78th St	Falkenburg Rd	2 Lanes Divided to 4 Lanes Divided	County	2D	4D	\$ -	\$ 58.154	
H1405	Park Rd	I-4	Sam Allen Rd	2 Lanes Undivided to 4 Lanes Divided	State	2U	4D	\$ 4.369	\$ -	
H1410	Parsons Ave	Lumsden Rd	SR 60	2 Lanes Undivided to 4 Lanes Divided	County	2U	4D	\$ -	\$ 29.731	
H1420	Pauls Dr	Brandon Pkwy	SR 60	2 Lanes Undivided to 2 Lanes Enhanced	County	2U	2E	\$ 7.600	\$ -	
H5	Potential Future Managed Lanes - Requires Further Study				State			\$ 139.650	\$ -	
H2120	Potential I-75 South County Interchange - Requires Further Study			Interchange	State	New Interchange		\$ 35.000	\$ 91.000	
H1430	Progress Blvd	Falkenburg Rd	I-75	2 Lanes Undivided to 4 Lanes Divided	County	2U	4D	\$ 25.256	\$ -	
H1440	Providence Lake Blvd	English Bluff Ct	S of Summer Breeze Dr	No Existing Lanes to 2 Lanes Undivided	County	00	2U	\$ -	\$ 19.741	
H1442	Race Track Rd	Hillsborough Ave	Linebaugh Ave	2 Lanes Undivided to 4 Lanes Divided	County	2U	4D	\$ 24.400	\$ -	
H1447	Race Track Rd	Linebaugh Ave	Country Way Blvd	2 Lanes Undivided to 4 Lanes Divided	County	2U	4D	\$ 11.100	\$ -	
H1450	Rhodine Rd	US 41	US 301	No Existing Lanes to 2 Lanes Undivided	County	00	2U	\$ -	\$ 49.106	
H1460	Rice Rd	County Line Road	Coronet Road	No Existing Lanes to 2 Lanes Divided	County	00	2D	\$ -	\$ 40.000	
H1480	Rowlett Park Dr	Sligh Ave	Waters Ave	2 Lanes Undivided to 2 Lanes Enhanced	Tampa	2U	2E	\$ -	\$ 2.930	
H1490	S Blvd	Swann Ave	Kennedy Blvd	2 Lanes Divided to 4 Lanes Divided	Tampa	2D	4D	\$ -	\$ 15.058	
H1500	S Mobley Rd	Race Track Rd	Gunn Hwy	2 Lanes Undivided to 4 Lanes Divided	County	2U	4D	\$ -	\$ 64.540	
H1510	Sam Allen Rd	Forbes Rd	Alexander St Ext	2 Lanes Undivided to 2 Lanes Enhanced	County	2U	2E	\$ 3.822	\$ -	
H1530	Sam Allen Rd	Park St	Wilder Rd	2 Lanes Undivided to 4 Lanes Divided	County	2U	4D	\$ -	\$ 10.725	
H1540	Sam Allen Rd	Wilder Rd	County Line Rd	No Existing Lanes to 4 Lanes Divided	County	00	4D	\$ -	\$ 64.449	
H1550	Sam Allen Rd	SR 39	Park Rd	2 Lanes Undivided to 4 Lanes Divided	County	2U	4D	\$ 33.273	\$ -	
H1560	Sheldon Rd	Memorial Hwy	Linebaugh Ave	4 Lanes Divided to 6 Lanes Divided	County	4D	6D	\$ -	\$ 116.006	
H1570	Shell Point Rd	24th St	30th St	No Existing Lanes to 2 Lanes Undivided	County	00	2U	\$ -	\$ 7.870	
H1630	Simmons Loop Rd	US Hwy 301	Big Bend Rd	No Existing Lanes to 2 Lanes Undivided	County	00	2D	\$ 45.429	\$ -	
H1635	Simmons Loop Rd	Big Bend Rd	Gibsonton Rd	No Existing Lanes to 2 Lanes Divided	County	00	2D	\$ 88.262	\$ -	
H1580	Skipper Rd	Bruce B Downs Blvd	46th St	2 Lanes Undivided to 4 Lanes Divided	County	2U	4D	\$ -	\$ 11.969	
H1590	Sligh Ave	Benjamin Rd	Manhattan Ave	2 Lanes Divided to 4 Lanes Divided	County	2D	4D	\$ -	\$ 44.700	

Appendix C (Amended 8/3/10; 1/4/11)

Cost Affordable Highway Projects and Unfunded Needs (Including ITS, Operations, and Project Transfers)

SHOWN IN PRESENT DAY COST (PDC) \$ MILLIONS

Project ID	Facility	From	To	Project Description	Owner	Improvement Type		Total Funded Cost	Total Unfunded Cost	Notes
						Existing or Committed Lanes	2035 Lanes			
H1600	Sligh Ave	Armenia Ave	Florida Ave	4 Lanes Undivided to 4 Lanes Enhanced	County	4U	4E	\$ 2.962	\$ -	
H1610	Sligh Ave	56th St	US Hwy 301	2 Lanes Undivided to 2 Lanes Enhanced	County	2U	2E	\$ 4.634	\$ -	
H1620	Sligh Ave Ext	Sligh Ave	Eureka Springs Rd	No Existing Lanes to 2 Lanes Undivided	County	00	2U	\$ -	\$ 26.000	
H1640	South County N/S Road E of I-75	Apollo Beach Blvd Ext	Big Bend Rd	No Existing Lanes to 2 Lanes Divided	County	00	2D	\$ 37.382	\$ -	
H1650	Spruce St	Lois Ave	Himes Ave	2 Lanes Undivided to 4 Lanes Divided	Tampa	2U	4D	\$ -	\$ 22.513	
H1670	SR 39	Park Rd	Alabama St	4 Lanes Divided to 4 Lanes Enhanced	State	4D	4E	\$ 1.760	\$ -	
H1675	SR 574	Highview Rd	Parsons Ave	2 Lanes Undivided to 4 Lanes Divided	State	2D	4D	\$ 19.305	\$ -	
H1680	SR 574	Parsons Ave	Kingsway	2 Lanes Undivided to 4 Lanes Divided	State	2U	4D	\$ 28.160	\$ -	
H1690	SR 574	Kingsway	Mcintosh Rd	2 Lanes Undivided to 4 Lanes Divided	State	2U	4D	\$ 64.757	\$ -	
H1730	SR 60	US Hwy 301	Falkenburg Rd	4 Lanes Divided to 6 Lanes Divided	State	4D	6D	\$ 28.930	\$ -	
H1700	SR 60 (NB Interchange)	I-275	Spruce St	Interchange	State	Modify Interchange		\$ 173.394	\$ -	
H1710	SR 60 (SB Interchange)	I-275	Spruce St	Interchange	State	Modify Interchange		\$ 65.909	\$ -	
H1720	SR 60/Brandon Blvd	Valrico Rd	Dover Rd	4 Lanes Divided to 6 Lanes Divided	State	4D	6D	\$ -	\$ 41.935	
H1725	SR 60/Brandon Blvd	Dover Rd	County Line Rd	4 Lanes Divided to 6 Lanes Divided	State	4D	6D	\$ -	\$ 177.117	
H1740	SR 674	US 301	CR 579/Saffold Rd	2 Lanes Undivided to 4 Lanes Divided	State	2U	4D	\$ 66.744	\$ -	
H1749	Summerfield Blvd	Big Bend Rd	West Lake Rd	No Existing Lanes to 2 Lanes Undivided	County	00	2U	\$ 1.457	\$ -	ROW funded; CST unfunded
H1750	Summerfield Blvd	Dixon Dr	Symm Rd Ext	No Existing Lanes to 2 Lanes Undivided	County	00	2U	\$ -	\$ 29.431	
OP3	Sun City Center Area Roadway Improvements				County	Operations Improvements		\$ 8.000	\$ -	
H1760	Suncoast Pkwy	Veterans Expwy	Pasco County	4 Lanes Freeway to 6 Lanes Freeway	State	4F	6F	\$ 67.802	\$ 94.844	Design and ROW funded; CST unfunded
H1770	Swann Ave	Howard Ave	Bayshore Blvd	2 Lanes Undivided to 2 Lanes Enhanced	Tampa	2U	2E	\$ 2.096	\$ -	
H1790	Tampa Bay Blvd	N/S Cargo Blvd	Lois Ave	2 Lanes Undivided to 4 Lanes Divided	Tampa	2U	4D	\$ -	\$ 18.801	
H1800	Tampa Bay Blvd	Himes Ave	Armenia Ave	2 Lanes Undivided to 4 Lanes Enhanced	Tampa	2U	4E	\$ 1.972	\$ 31.694	Design funded; ROW and CST unfunded
H1810	Tarpon Springs Rd	Pinellas County	Gunn Hwy	2 Lanes Undivided to 2 Lanes Enhanced	County	2U	2E	\$ 4.773	\$ -	
H1802	Telecom Pkwy Ext	Arbor Isle Drive	Morris Bridge Rd	No Existing Lanes to 4 Lanes Undivided	Temple Terrace	00	4D	\$ 72.311	\$ -	
H1805	Temple Terrace Downtown Streets			No Existing Lanes to 2 Lanes Undivided	Temple Terrace	00	2D	\$ 1.500	\$ -	
OP2	Temple Terrace Support for Maintenance				Transit			\$ 3.100	\$ -	
TRANSFER	Transfer For Transit Projects				Transit			\$ 126.322	\$ -	
H1820	Trapnell Rd	SR 39	Jim Johnson Ext	2 Lanes Undivided to 4 Lanes Divided	County	2U	4D	\$ -	\$ 25.123	
H1830	Trapnell Rd	Nesmith Rd	County Line Rd	No Existing Lanes to 2 Lanes Undivided	County	00	2U	\$ -	\$ 18.100	
H1840	Trask St	Cypress St	Boy Scout Blvd	2 Lanes Undivided to 2 Lanes Enhanced	Tampa	2U	2E	\$ -	\$ 4.000	
H1842	Turkey Creek Rd	Sydney Rd	Airport Rd	2 Lanes Undivided to 2 Lanes Enhanced	Plant City	2U	2E	\$ 4.670	\$ -	
H1845	Tyler St	Ashley St	Cass St	3 Lanes One-Way to 3 Lanes One-Way Enhanced	Tampa	3O	3OE	\$ 0.843	\$ -	
H1850	Tyson St	Westshore Blvd	Manhattan Blvd	No Existing Lanes to 2 Lanes Undivided	Tampa	00	2U	\$ -	\$ 8.027	Design funded; ROW and CST unfunded
H1860	US Hwy 301	Manatee County	SR 674	2 Lanes Undivided to 4 Lanes Divided	State	2U	4D	\$ 9.031	\$ 129.450	
H1865	US Hwy 301	SR 674	Balm Rd	2 Lanes Undivided to 6 Lanes Divided	State	2U	6D	\$ 50.000	\$ -	
H1868	US HWY 301	BALM RD	GIBSONTON RD	2 Lanes Undivided to 6 Lanes Divided	State	2U	6D	\$ 27.956	\$ -	
H1870	US Hwy 301	Crosstown W Ramp	I-4	4 Lanes Divided to 6 Lanes Divided	State	4D	6D	\$ -	\$ 170.810	
H1880	US Hwy 301	Harney Rd (S)	Pasco County	2 Lanes Undivided to 4 Lanes Divided	State	2U	4D	\$ -	\$ 395.466	
H1890	US Hwy 301	Tampa Bypass Canal	Fowler Ave	2 Lanes Undivided to 4 Lanes Divided	State	2U	4D	\$ 34.450	\$ -	
H1900	US Hwy 41	19th Ave Ne	Madison Ave	4 Lanes Divided to 6 Lanes Divided	State	4D	6D	\$ 30.421	\$ 436.037	Design funded; ROW and CST unfunded
H1910	US Hwy 92	Park Rd	County Line Rd	2 Lanes Undivided to 4 Lanes Divided	State	2U	4D	\$ 5.902	\$ 84.596	Design funded; ROW and CST unfunded
H1920	US Hwy 92	Garden Lane	Thonotosassa Rd	2 Lanes Undivided to 4 Lanes Divided	State	2U	4D	\$ 22.249	\$ 318.906	Design funded; ROW and CST unfunded
H1930	US Hwy 92	SR 600	Reynolds St	3 Lanes One-Way to 3 Lanes One-Way Enhanced	State	3O	3OE	\$ 2.197	\$ -	

Appendix C (Amended 8/3/10; 1/4/11)

Cost Affordable Highway Projects and Unfunded Needs (Including ITS, Operations, and Project Transfers)

SHOWN IN PRESENT DAY COST (PDC) \$ MILLIONS

Project ID	Facility	From	To	Project Description	Owner	Improvement Type		Total Funded Cost	Total Unfunded Cost	Notes
						Existing or Committed Lanes	2035 Lanes			
H1940	Van Dyke Rd	Gunn Hwy	Tobacco Rd	2 Lanes Undivided to 2 Lanes Enhanced	County	2U	2E	\$ 1.812	\$ -	
H1950	Van Dyke Rd	Tobacco Rd	Whirley Rd	2 Lanes Undivided to 4 Lanes Divided	County	2U	4D	\$ 75.224	\$ -	
H1960	Veterans Expwy	Courtney Campbell	Suncoast Pkwy	6 Lanes Freeway to 8 Lanes Freeway	State	6F	8F	\$ 376.261	\$ -	
ITS100	Veterans Expwy Sun Pass Electronic Toll Collection Conversion			TBD	State			\$ -	\$ -	
H1970	Victoria St	Kings Ave	Parsons Ave	2 Lanes Undivided to 2 Lanes Enhanced	County	2U	2E	\$ -	\$ 1.329	
H1980	Waters Ave	Old Memorial Hwy	Countryway Blvd	No Existing Lanes to 4 Lanes Divided	County	00	4D	\$ -	\$ 8.346	
H1990	Waters Ave	Armenia Ave	Nebraska Ave	4 Lanes Divided to 4 Lanes Enhanced	County	4D	4E	\$ 5.321	\$ -	
H2000	Waters Ave	Nebraska Ave	22nd St	2 Lanes Undivided to 4 Lanes Divided	County	2U	4D	\$ -	\$ 30.384	
H2010	Westshore Blvd	Gandy Blvd	Beach Park Drive	2 Lanes Undivided to 2 Lanes Enhanced	County	2U	2E	\$ 8.459	\$ -	
H2020	Westshore Blvd	Gray St	Boy Scout Blvd	4 Lanes Divided to 6 Lanes Divided	County	4D	6D	\$ 26.648	\$ -	
H2030	Wheeler St	Parsons Ave	Valrico Rd	2 Lanes Undivided to 2 Lanes Enhanced	County	2U	2E	\$ -	\$ 13.892	
H2040	Wheeler St	M L King St	Reynolds St	2 Lanes Undivided to 2 Lanes Enhanced	Plant City	2U	2E	\$ 12.906	\$ -	
H2050	Whiting St	Ashley Dr	Morgan St	4 Lanes Undivided to 4 Lanes Divided	Tampa	4U	4D	\$ -	\$ 0.667	
H2060	Whiting St	Morgan St	Brush St	2 Lanes Undivided to 4 Lanes Divided	Tampa	2U	4D	\$ -	\$ 8.257	
H2070	Whiting St	Brush St	Meridian	No Existing Lanes to 4 Lanes Divided	Tampa	00	4D	\$ -	\$ 2.970	
H2080	Woodberry Rd	Falkenburg Rd	Grand Regency Blvd	2 Lanes Undivided to 4 Lanes Divided	County	2U	4D	\$ -	\$ 17.345	
H2090	Woodberry Rd	US 301	Falkenburg	No Existing Lanes to 4 Lanes Divided	County	00	4D	\$ -	\$ 46.274	
H2100	Woodberry Rd	Grand Regency Blvd	Lakewood Dr	2 Lanes Divided to 4 Lanes Divided	County	2D	4D	\$ -	\$ 27.503	

	Total Funded Needs	Unfunded Needs
TOTAL	\$ 5,420.094	\$ 10,782.336