

Hillsborough County MPO Transit Study Overview

Beth Alden, AICP





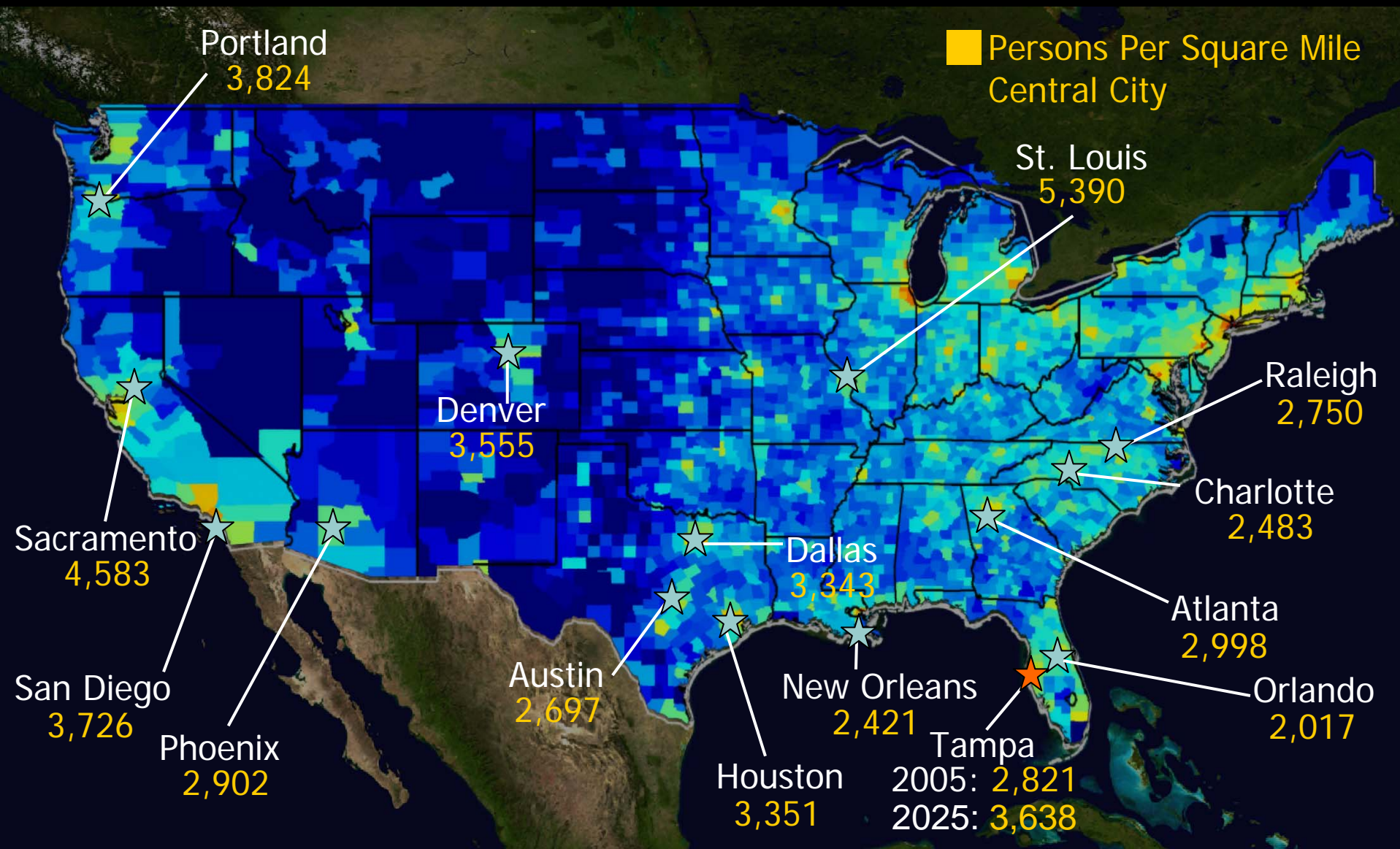
TRANSIT STUDY

Study Goals

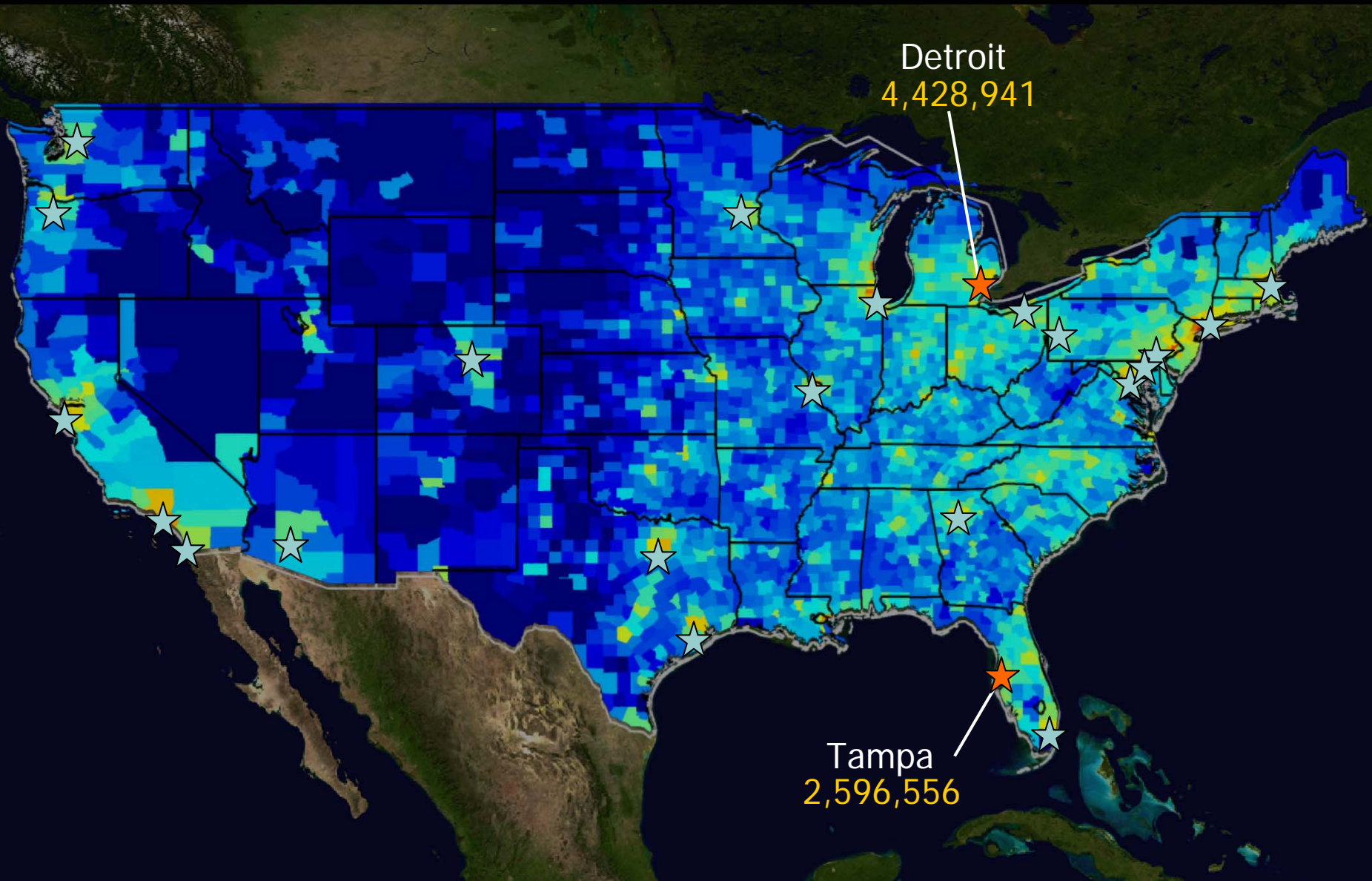
- Develop a concept plan for a countywide transit system
- Look at a variety of technologies
- Emphasize regional and sub-regional corridors
- Develop land use/transit strategies



Background: Comparable Areas with Planned or Existing Rail – Central City Population Density



Background: Top Metro Areas **without** Active Rail Initiatives or Existing Rail Systems





Plano, Texas

Before & after a
DART Rail Station

“Quality investments
have a transformative
effect.”



“No new road capacity to Downtown in over 30 years. And Downtown is booming.”

- #1 destination for working adults < 35
- \$5.5 Billion in private investment
- Ridership growing faster than driving



“Be guilty of trying to put in something for everyone.”

119 miles of rapid transit

18 miles of Bus Rapid Transit (BRT)

31 new Park-n-Rides

Enhanced Bus Network & Transit Hubs (FastConnects)

Denver Union Station



A map of Hillsborough County, Florida, is shown in orange. Two inset shapes are overlaid on the map: a yellow shape representing Minneapolis and a green shape representing Atlanta. The map also shows the coastline and water bodies of the county. Dashed lines indicate the map's position on a larger grid.

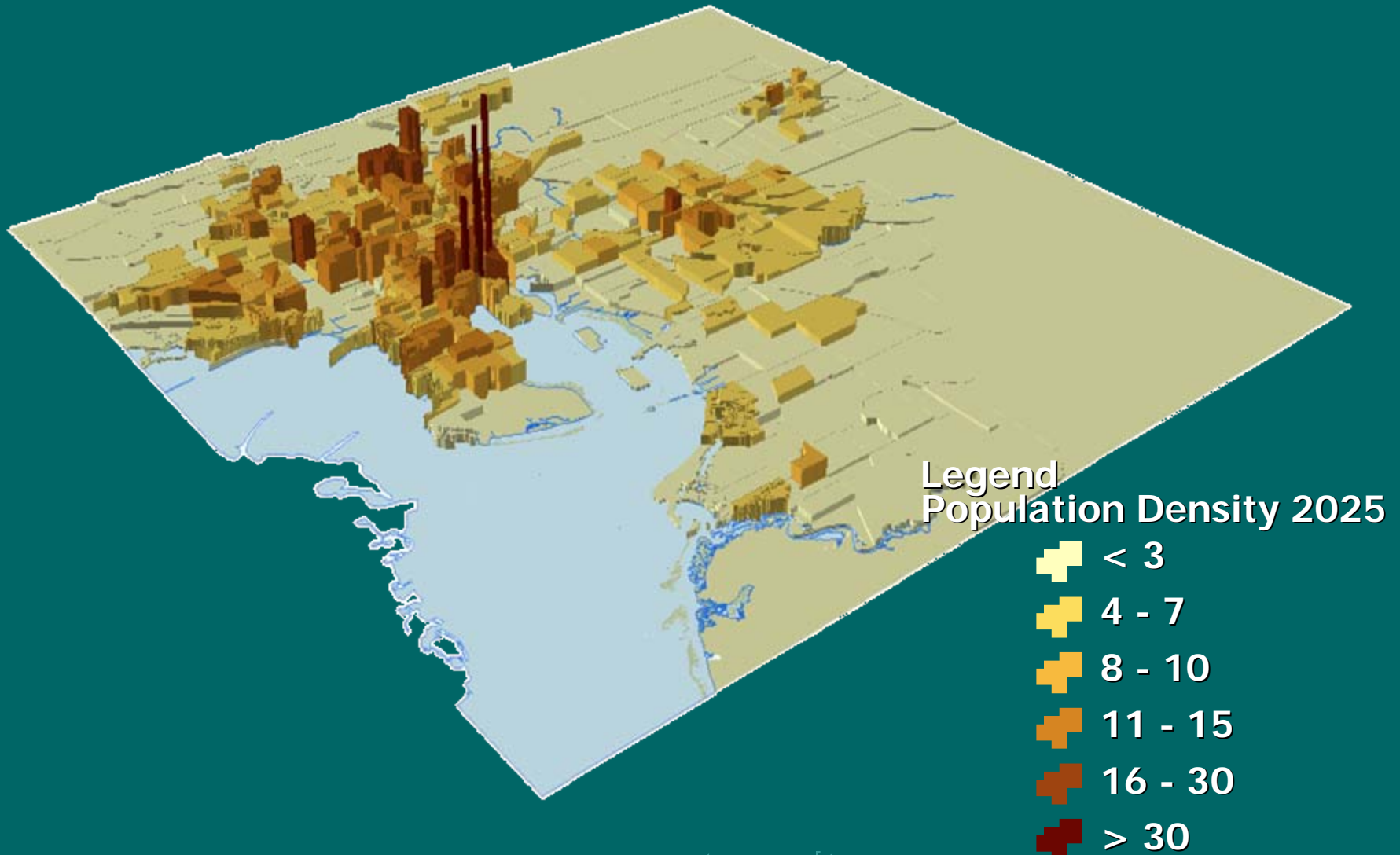
Hillsborough County
1073 sq mi

Minneapolis
58 sq mi

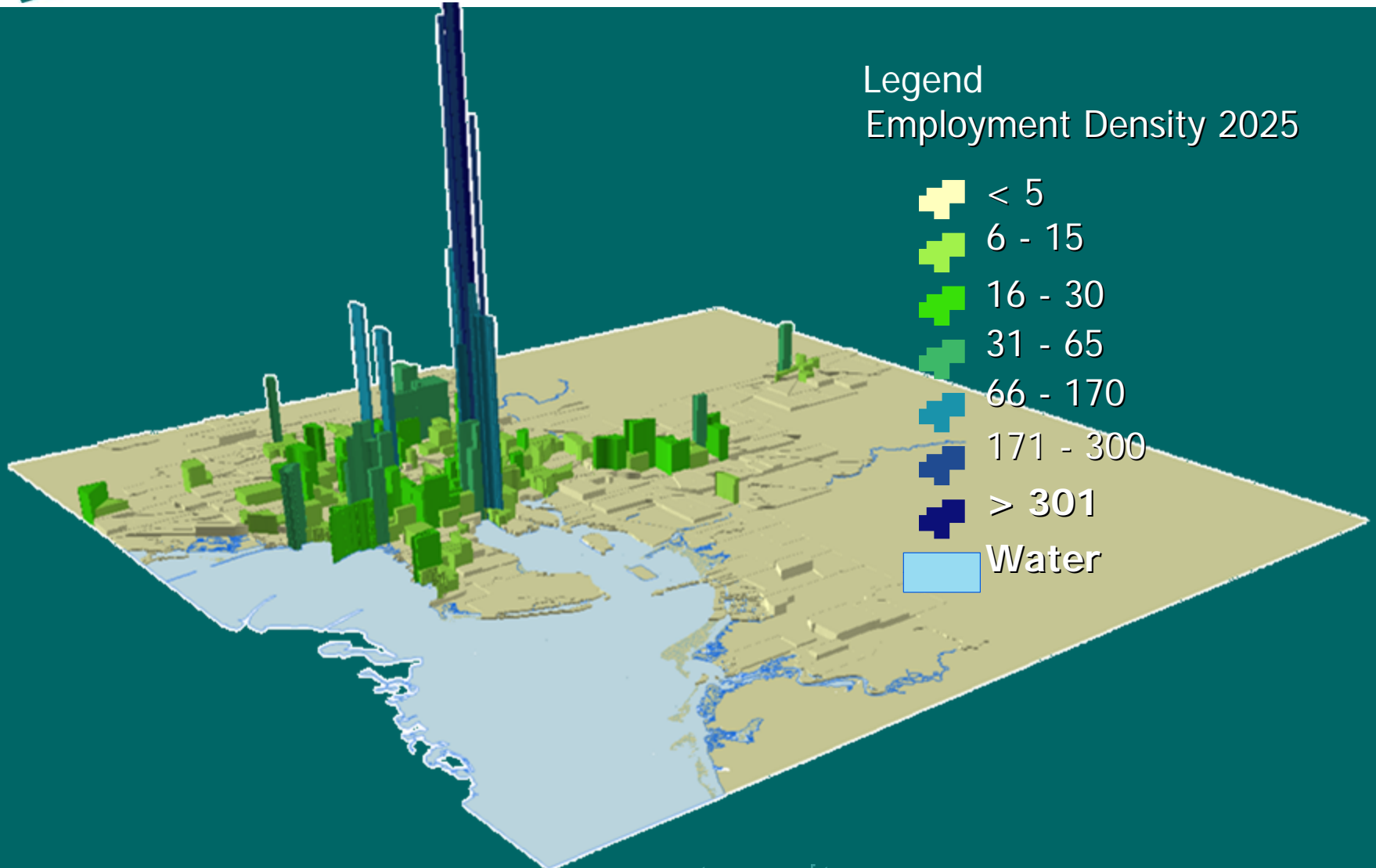
Atlanta
132 sq mi

**Background:
Growth by 2025**

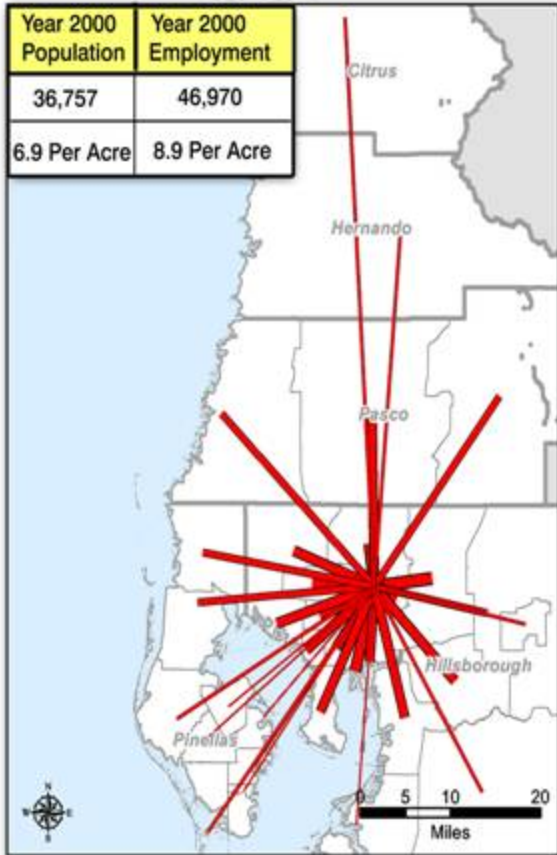
Background: Population Density 2025



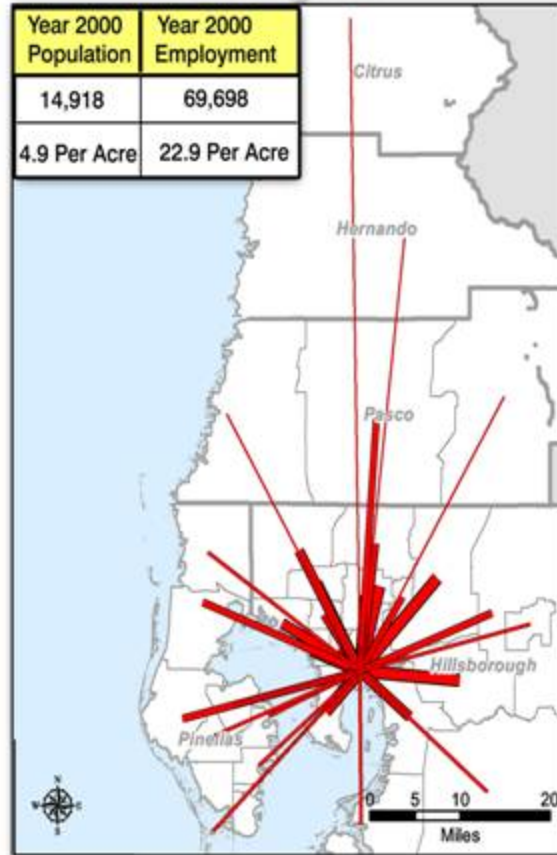
Background: Job Density 2025



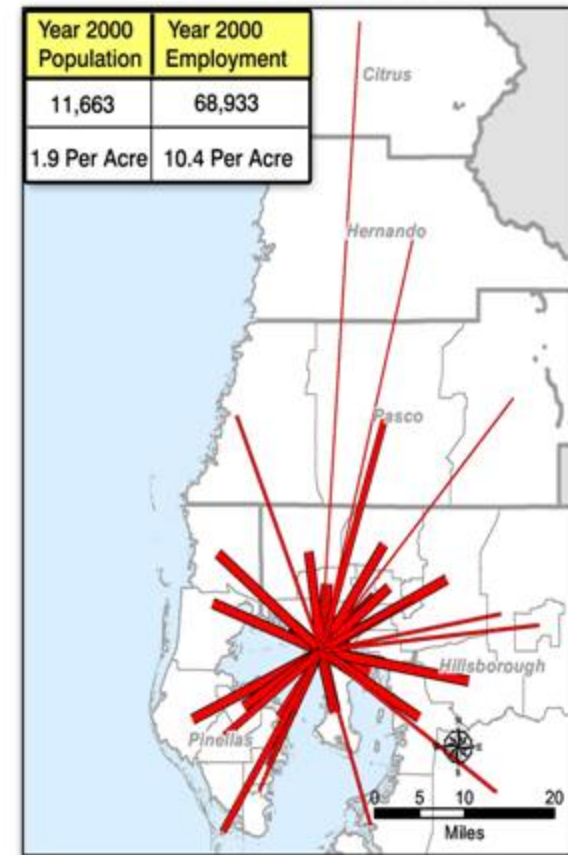
USF



Tampa



Westshore





TRANSIT STUDY

Values Workshops

Common Themes

- I like a growing economy, but if traffic grows with it, will gridlock choke the economy?



- Let's grow our small towns and save some open space rather than sprawling everywhere.



Common Themes

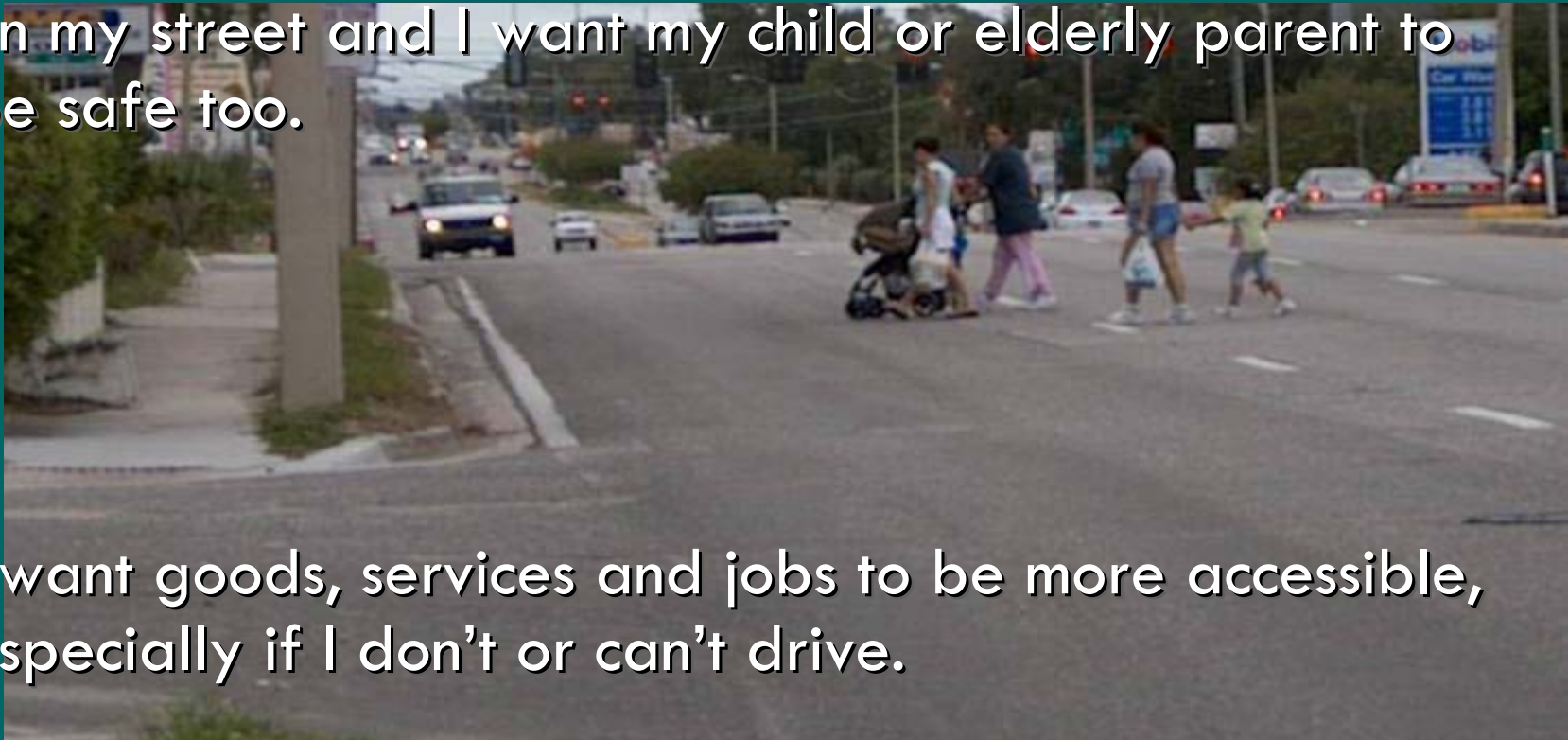
- I want more quality time spent with my family, friends, and less time in traffic.
- Give me more reliable travel times.



Values Workshops

Common Themes

- Traffic cuts through my community. I want to feel safe on my street and I want my child or elderly parent to be safe too.



- I want goods, services and jobs to be more accessible, especially if I don't or can't drive.

Design a Process for Decision-making

Conduct a public discussion of scenarios

Refine and circulate the preferred scenario





TRANSIT STUDY

Study Schedule

Values Workshops	Nov-Dec
Briefings and Website	End of Jan
Stakeholder Teams	Start Feb
Workshop	Mar
Preferred Scenario	Jun
Refined Scenario	Oct
Prioritization and Phasing	Nov-Dec

A vibrant illustration of a park scene. In the foreground, a paved path leads towards a transit station with a blue roof. A person is riding a bicycle on the left, and another person is walking on the right. In the background, there are lush green trees, a palm tree, and a building. The scene is bright and sunny, suggesting a pleasant outdoor environment.

Transit Scenarios Game

Tuesday, March 13th

Workshops at 1:00 p.m. & 6:00 p.m.

Florida Center Building

Next to the Botanical Gardens at the Florida State Fairgrounds

Hillsborough County MPO Transit Study Overview

Questions?

