

# Hillsborough County MPO Transit Study Overview

Beth Alden, AICP





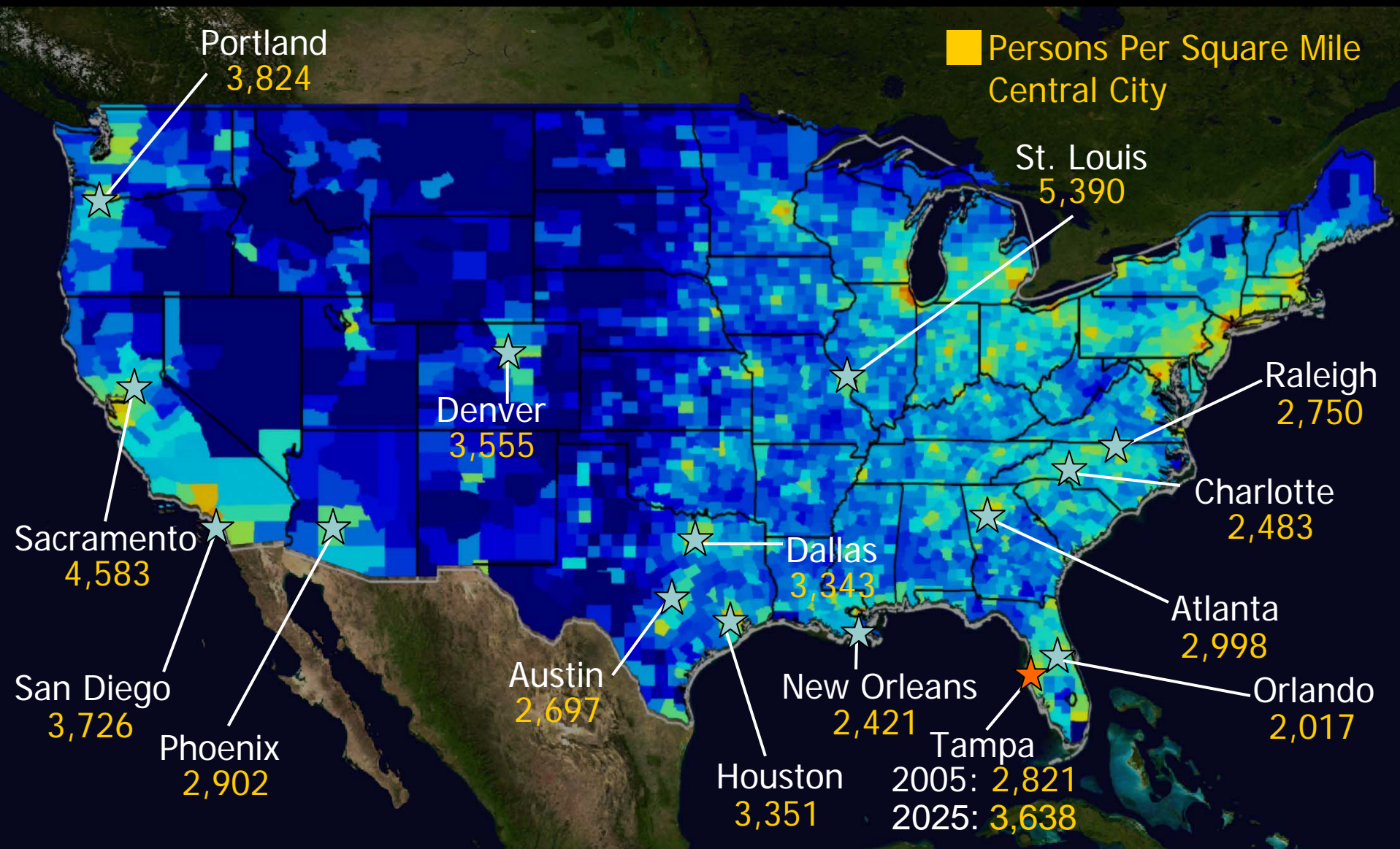
TRANSIT STUDY

# Study Goals

- Develop a concept plan for a countywide transit system
- Look at a variety of technologies
- Emphasize regional and sub-regional corridors
- Develop land use/transit strategies

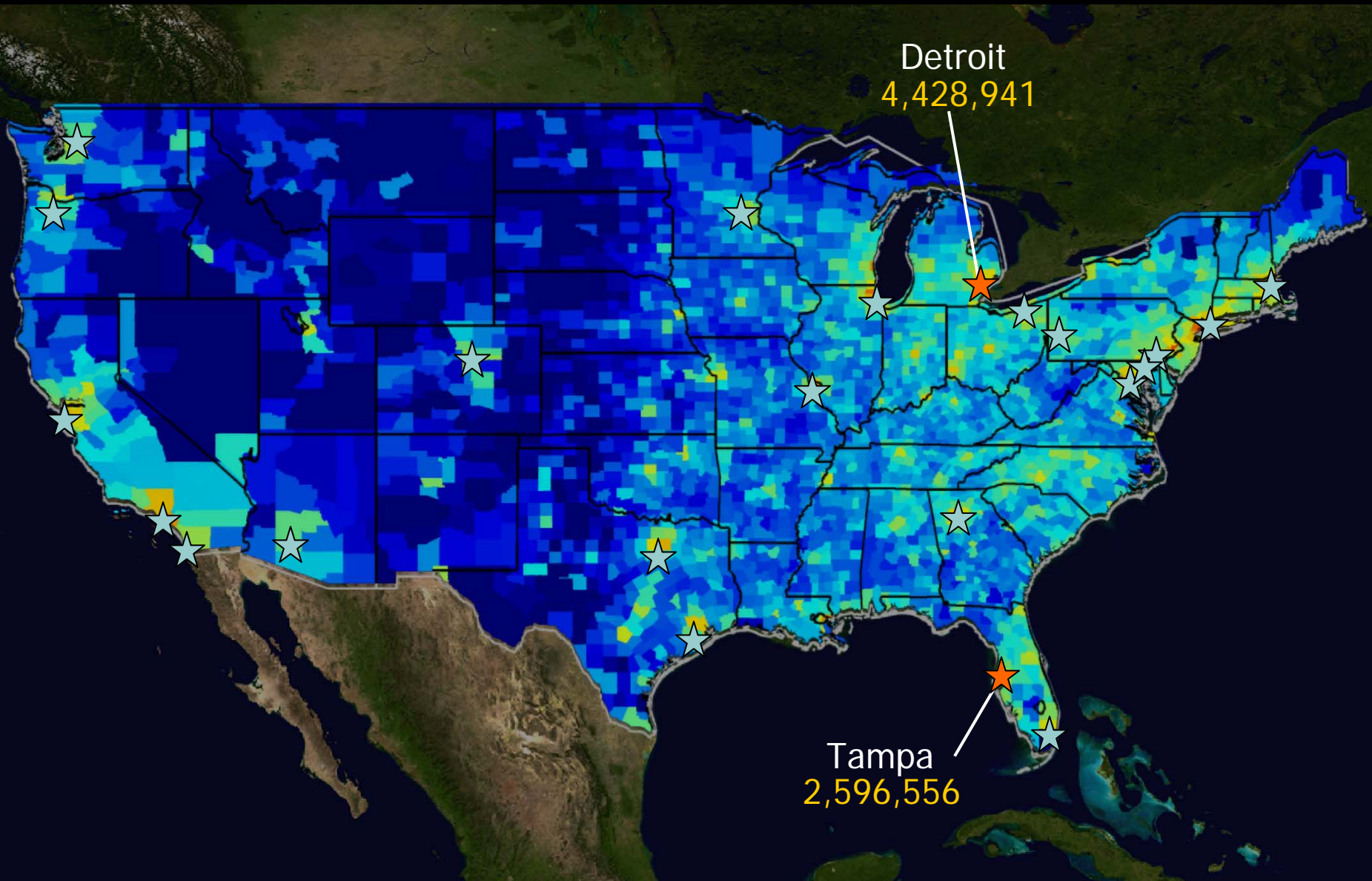


# Background: Comparable Areas with Planned or Existing Rail – Central City Population Density





# Background: Top Metro Areas **without** Active Rail Initiatives or Existing Rail Systems



A map of Hillsborough County, Florida, is shown in orange. Two insets are provided: a yellow one for Minneapolis, Minnesota, and a green one for Atlanta, Georgia. The map also shows the coastline of Florida to the west and south. Dashed lines indicate the map's position on a grid.

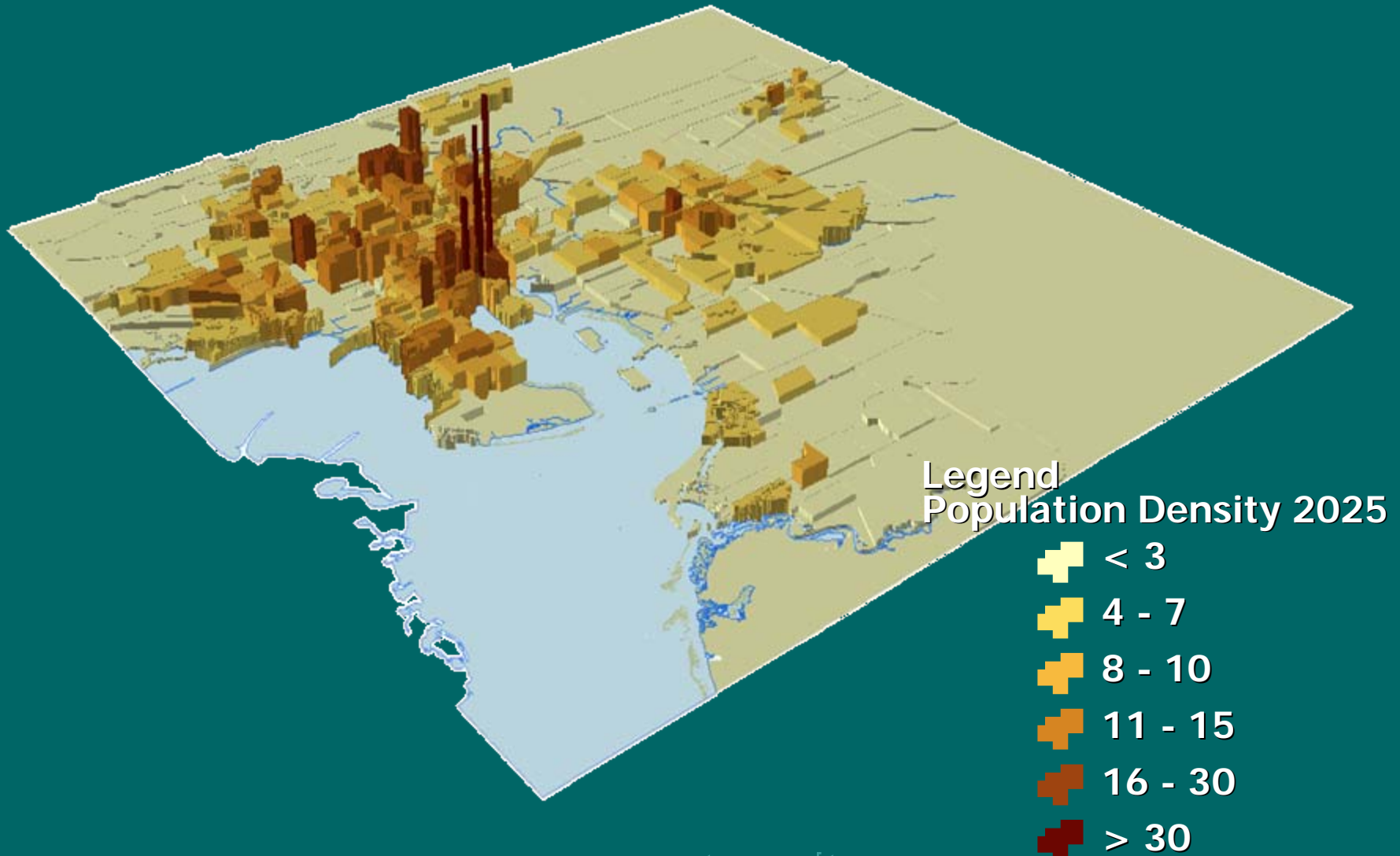
Hillsborough County  
1073 sq mi

Minneapolis  
58 sq mi

Atlanta  
132 sq mi

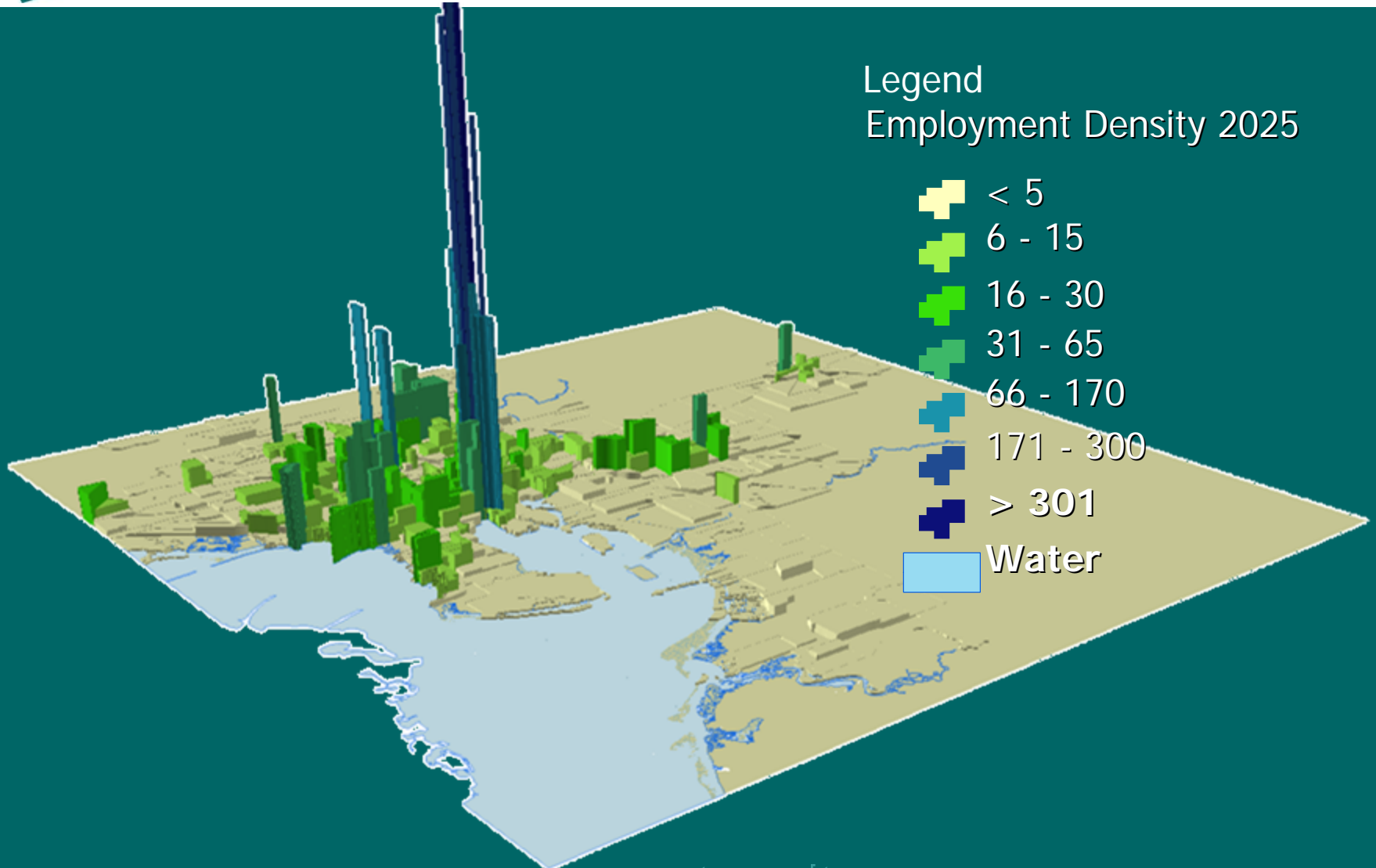
**Background:  
Growth by 2025**

# Background: Population Density 2025

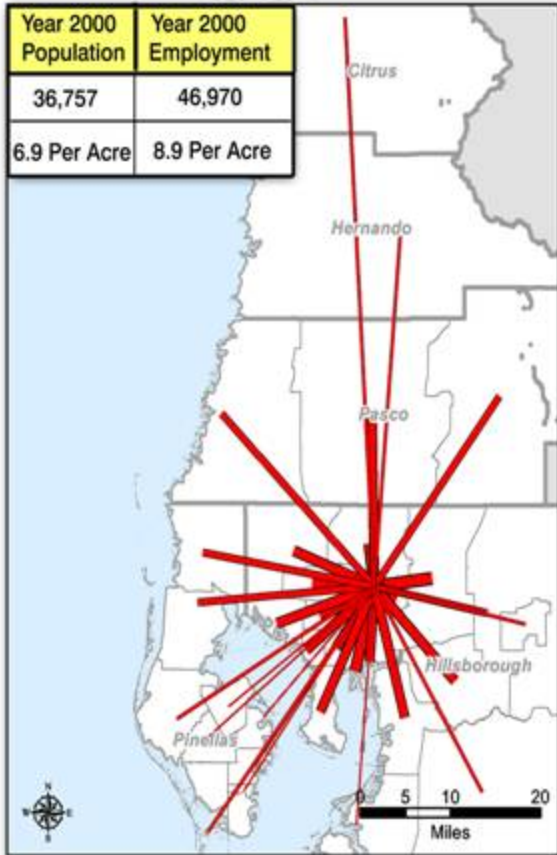




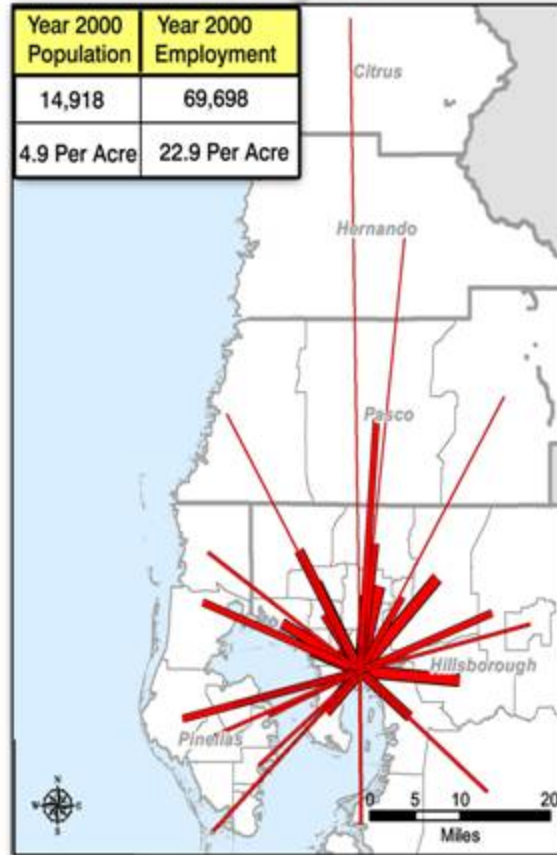
# Background: Job Density 2025



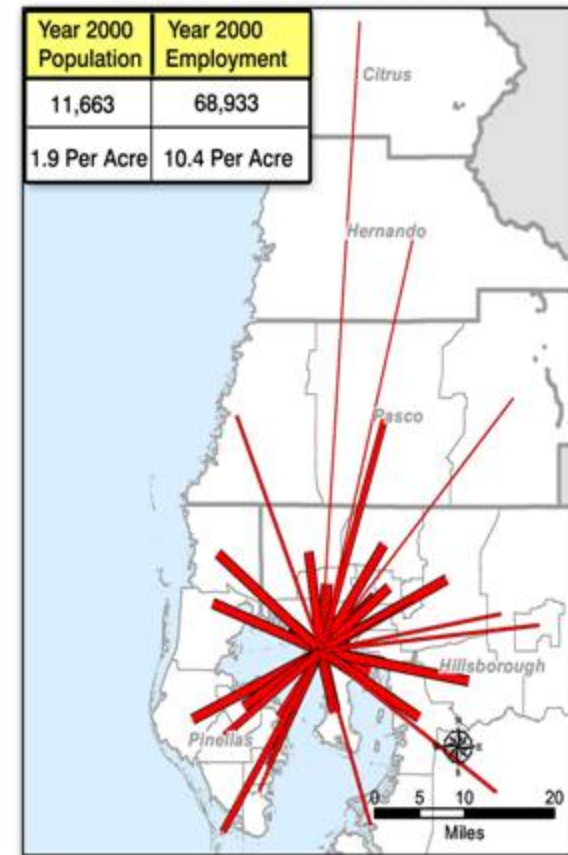
## USF



## Tampa



## Westshore







- **The capacity of our transportation system is limiting our ability to grow.**
- **The nature of our growth has reduced our mobility options.**
- **Congestion and long distance driving are resulting in more time behind the wheel.**



- **The cost of housing and transportation is growing faster than economic opportunity.**
- **Household transportation costs are very high when driving is the only viable option.**
- **Workforce housing and access to jobs are increasingly important to the local economy.**



## Design a Process for Decision-making

- Inform our public & planning partners: Stakeholder Teams, website and newsletters
- Develop transit scenarios
- Design and schedule workshops and other meetings to provide a forum for discussion





## Conduct a public discussion of scenarios

- Look at alternative futures: mobility, economy and quality of life implications
- “What do these choices mean to me?”
- Outcome: long range needs assessment for connections to Hillsborough destinations



## Refine and circulate the preferred scenario

- Explore technologies, location and quality of service, costs and potential funding sources
- Identify the benefits, challenges, opportunities
- Provide an opportunity for public discussion of choices and consensus
- Outcome: long range needs assessment of corridors, technologies, costs and potential next steps



**TRANSIT STUDY**

# Study Schedule

Values Workshops	Nov-Dec
Briefings and Website	End of Jan
Stakeholder Teams	Start Feb
Workshop	Mar
Preferred Scenario	Jun
Refined Scenario	Oct
Prioritization and Phasing	Nov-Dec



“Be guilty of trying to put in something for everyone.”

119 miles of rapid transit

18 miles of Bus Rapid Transit (BRT)

31 new Park-n-Rides

Enhanced Bus Network & Transit Hubs (FastConnects)

Denver Union Station





## Plano, Texas

Before & after a  
DART Rail Station

“Quality investments  
have a transformative  
effect.”





“No new road capacity to Downtown in over 30 years. And Downtown is booming.”

- #1 destination for working adults < 35
- \$5.5 Billion in private investment
- Ridership growing faster than driving







## Common Themes

- I want more quality time spent with my family, friends, and less time in traffic.
- Give me more reliable travel times.



TRANSIT STUDY

# Values Workshops

## Common Themes

- I like a growing economy, but if traffic grows with it, will gridlock choke the economy?



- Let's grow our small towns and save some open space rather than sprawling everywhere.



TRANSIT STUDY

# Values Workshops



## Common Themes

- Traffic cuts through my community. I want to feel safe on my street and I want my child or elderly parent to be safe too.
- I want goods, services and jobs to be more accessible, especially if I don't or can't drive.



# Transit Scenarios Game

## Tuesday, March 13th

### Workshops at 1:00 p.m. & 6:00 p.m.

### Florida Center Building

Next to the Botanical Gardens at the Florida State Fairgrounds

Enter at the Orient Road Security Gate for

**FREE PARKING**

**FLORIDA**

**STATE FAIRGROUNDS**

Attend  
either  
workshop!



[www.mpotransit.org](http://www.mpotransit.org)



TRANSIT STUDY

# Coordination

## Regional Transportation Authority

## Regional Transit Needs Assessment

- Regional corridors identified others
- Will need local connectors feeder systems
- Will need local funding match
- Will need local voices in regional consensus

## Pinellas Mobility Initiative

- Parallel efforts





TRANSIT STUDY

# Coordination

## Tampa Rail Project

- One corridor in the “something for everyone” network; possible route tweaks

## HART Bus Rapid Transit Studies

- Incremental steps in two corridors
- Jointly explore other opportunities for BRT around county

## Tampa Intl. Airport Transit Station Study

- Can accommodate most technologies







TRANSIT STUDY

# Coordination

## “Livable Cities” Plan Updates

### Tampa Comprehensive Plan

- TCEA Update

### Temple Terrace Comprehensive Plan

- Walk/bike network
- USF connection

### Plant City Comprehensive Plan

- Transportation to accommodate growth





## Hillsborough County Comprehensive Plan

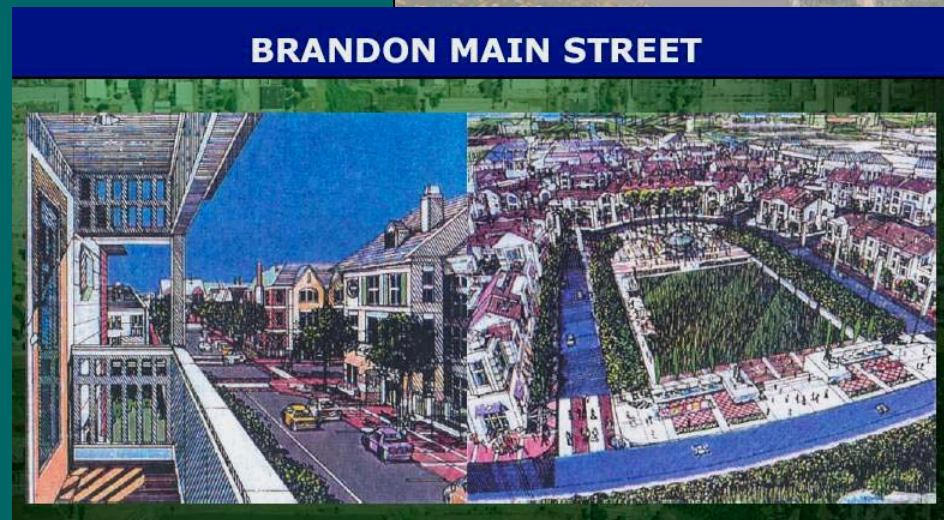
- Activity Centers
- Multimodal District(s)

## Vision Hillsborough

- Next steps  
land use



UNIVERSITY AREA COMMUNITY



BRANDON MAIN STREET

# Hillsborough County MPO Transit Study Overview

Questions?

