



# Planning for Mobility in Hillsborough County

Tuesday, November 28<sup>th</sup>, 2006

Lutz Community Center

# Agenda

- I. Introduction
- II. Where Are We Now and Where Are We Going?
- III. Planning For Mobility

# Why Are We Here?

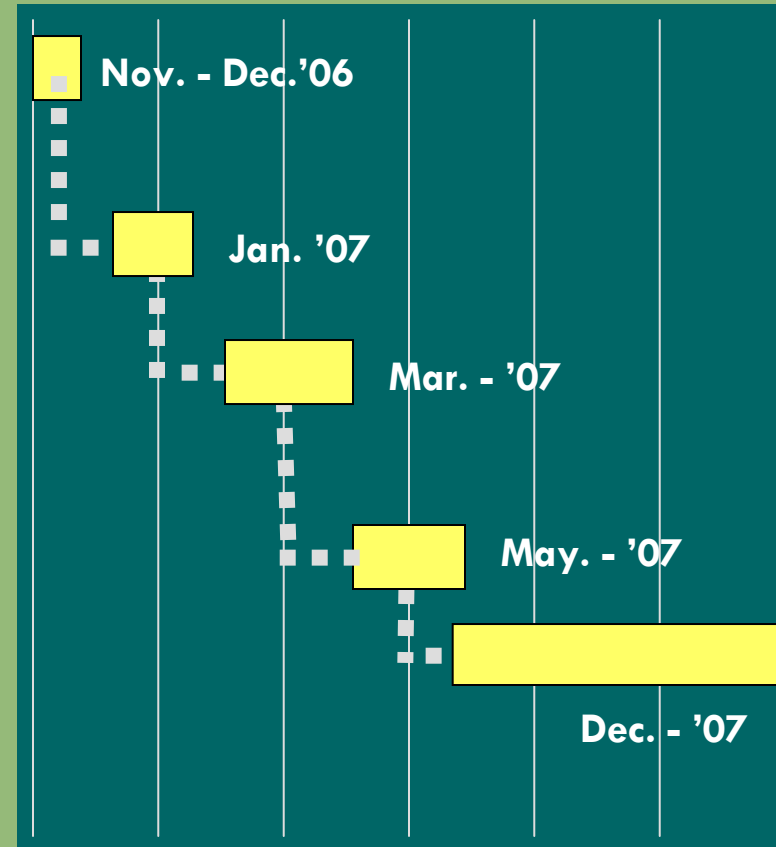
- Growth is coming...
  - How much time do you waste in traffic trying to get to the people and places that are important to you?
  - Is there a better way to design our communities and transportation network?
  - How do we decide what to keep and what to change?
- **What mobility alternatives are possible?**

# Project Overview

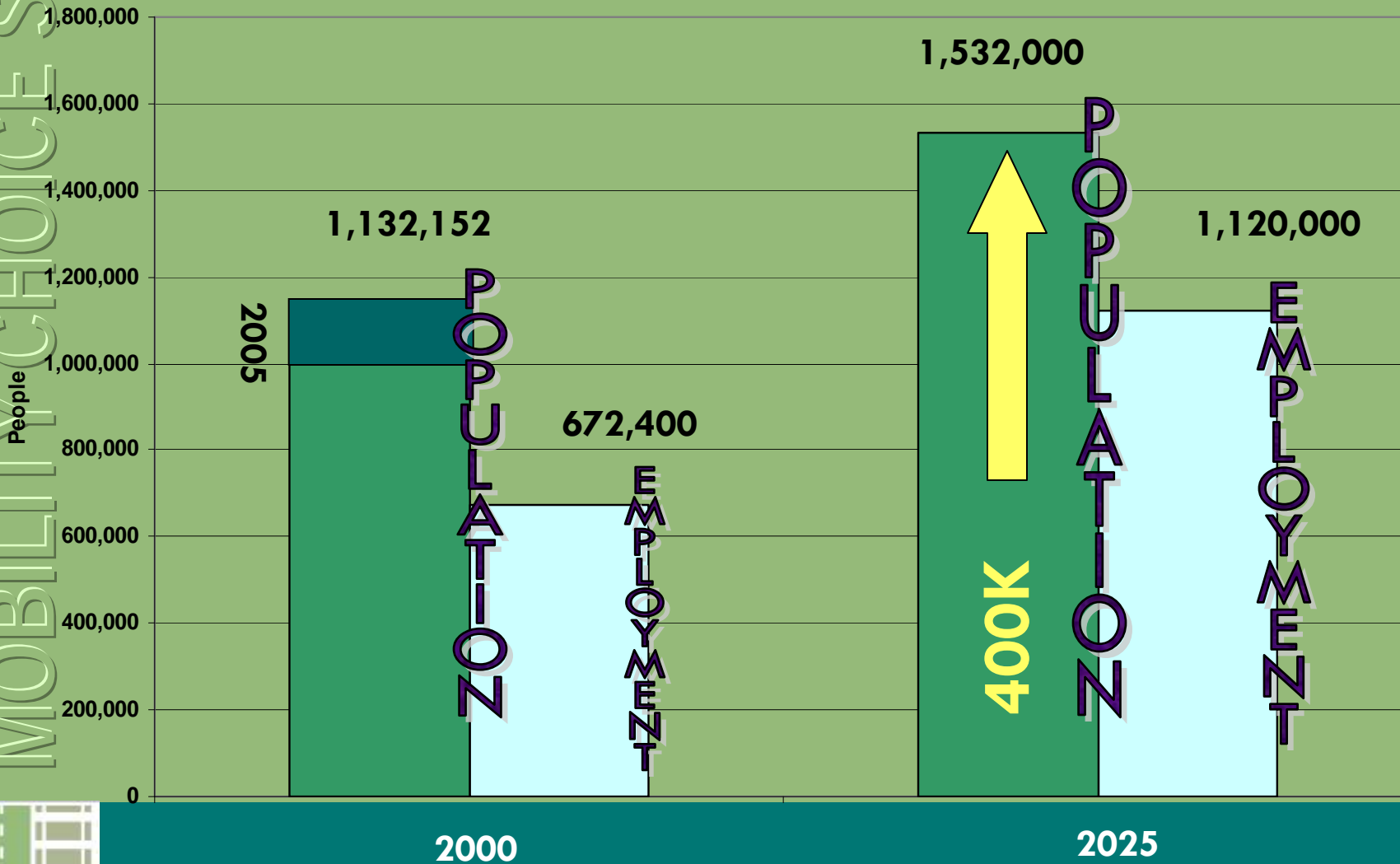
- Exploring alternatives to get to a preferred transit development scenario
  - Consider land use and transportation design relationship
- Year long process, culminate in Dec. 2007
- Joint effort of Hillsborough Metropolitan Planning Organization and The Planning Commission
- Project Partners:
  - FDOT, Hillsborough County, City of Tampa, City of Temple Terrace, Plant City
  - Complementary studies

# Project Schedule

- Series of workshops:
- What are our common values?
- Where are we now and where are we going?
- Where to we want to be?
  - Developing scenarios
- How will we get there?
- Transit network development and evaluation



# Where Are We Now and Where Are We Going?



# What Does a 35% Increase in Our Population Mean?

## Projected 2025 Population Increase of:

Hillsborough County, FL

**399,848**

## 2005 Populations of Comparable Cities

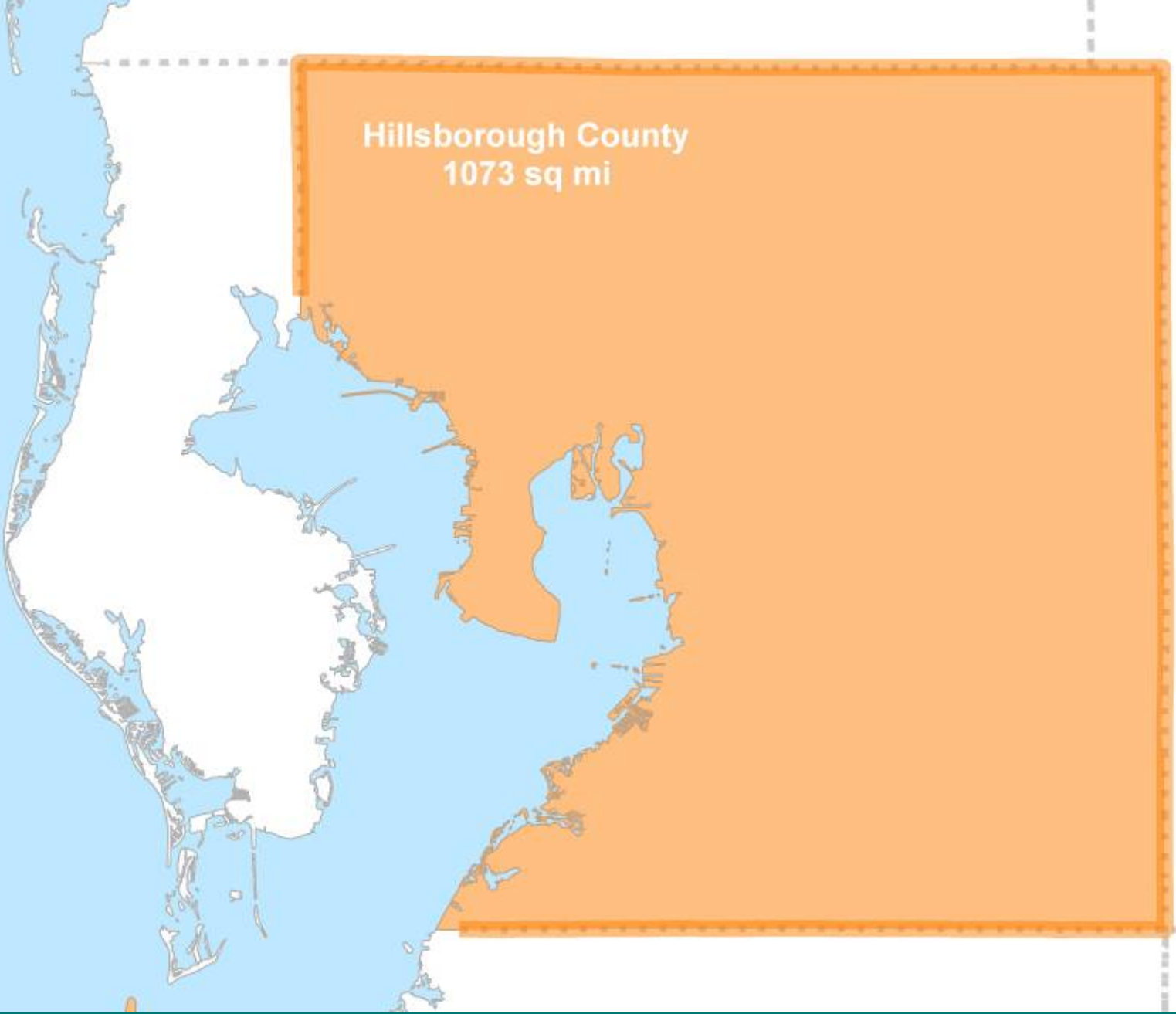
Minneapolis, MN

**372,811**

Atlanta, GA

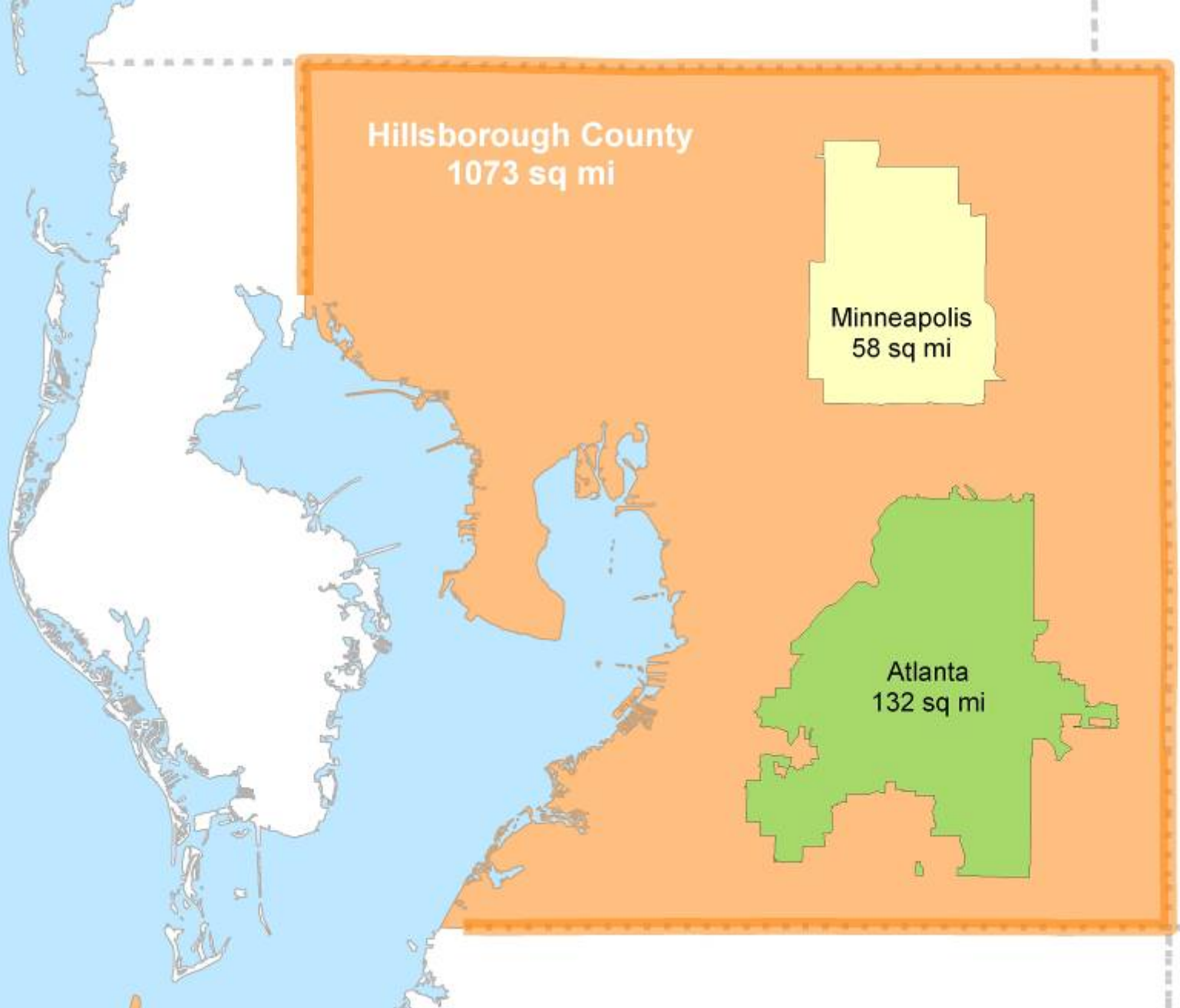
**470,688**

# MOBILITY CHOICE STUDY





# MOBILITY CHOICE STUDY



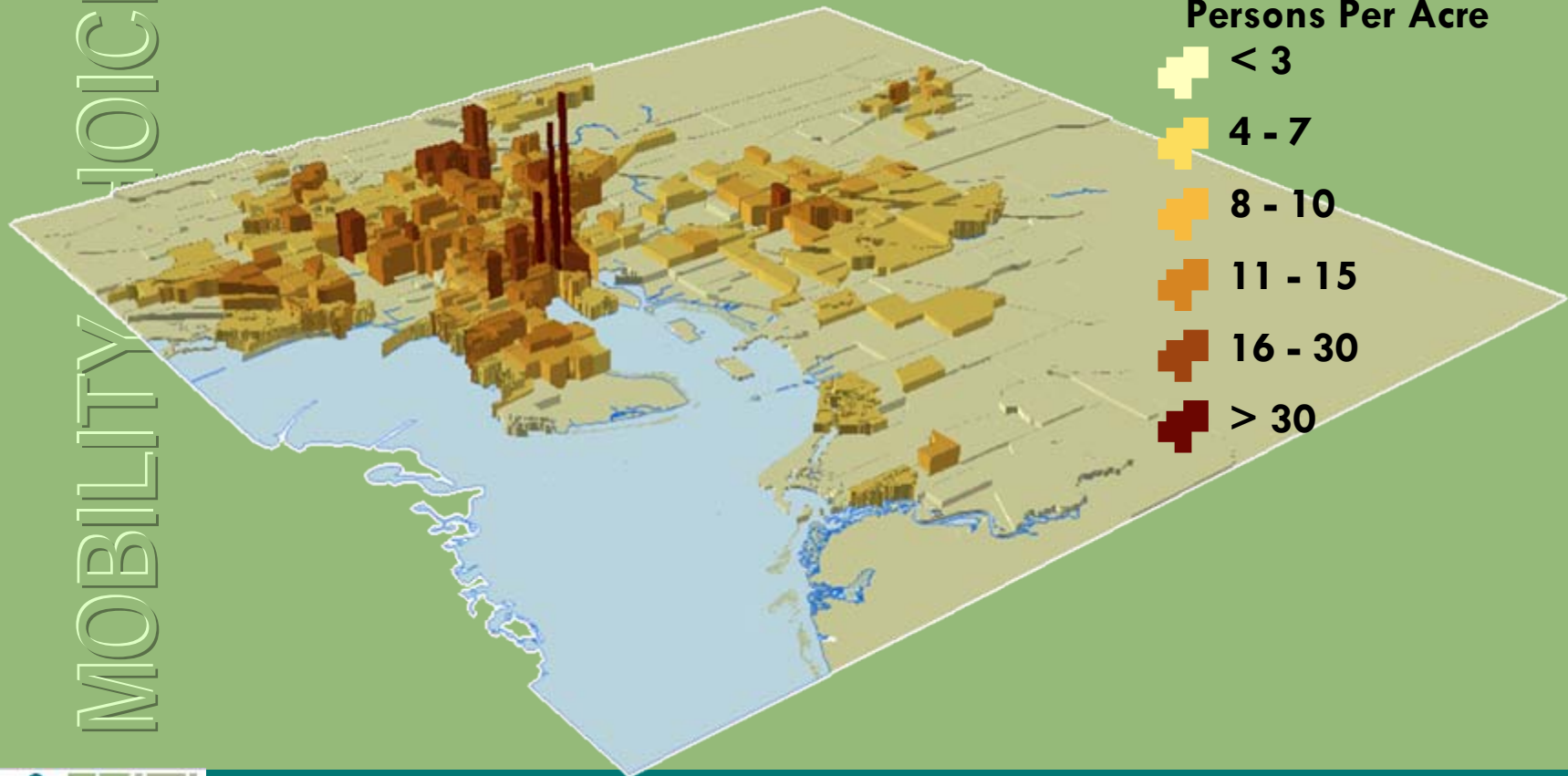
# Planning For Mobility

|   | Roadway Lane Miles | Public Transportation    |                    |
|---|--------------------|--------------------------|--------------------|
|   |                    | Transit Miles of Service | Rail Service Miles |
| Atlanta<br><i>Pop: 470,688</i>            | 3,829              | 2,534                    | 26.8               |
| Minneapolis<br><i>Pop: 372,811</i>        | 2,586              | 2,283                    | 24.2               |
| Hillsborough<br><br><i>Pop: 1,132,152</i> | <b>4,300</b>       | <b>886</b>               | <b>3.2</b>         |

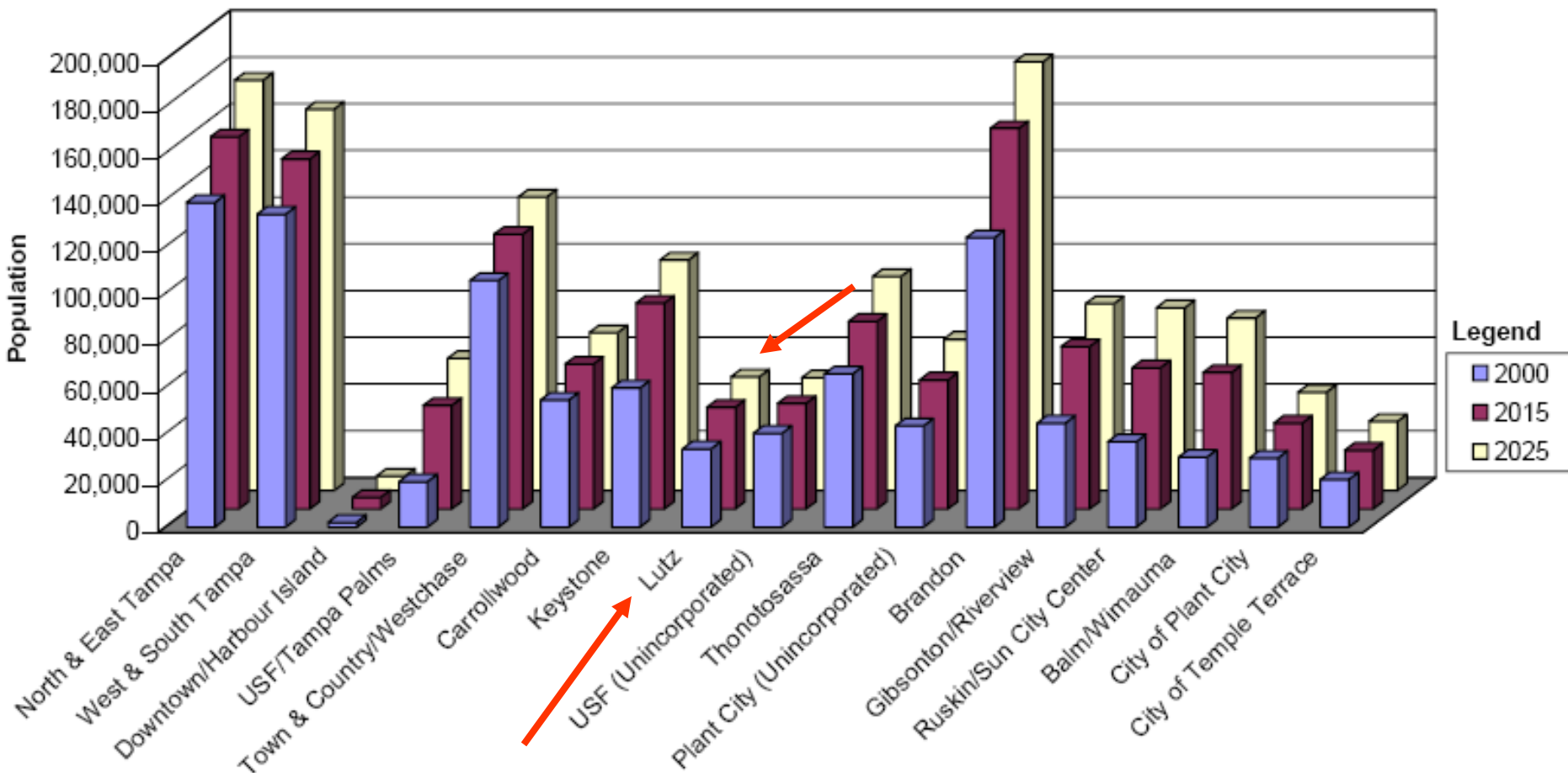
# Projected Population Density 2025

## Population Density 2025

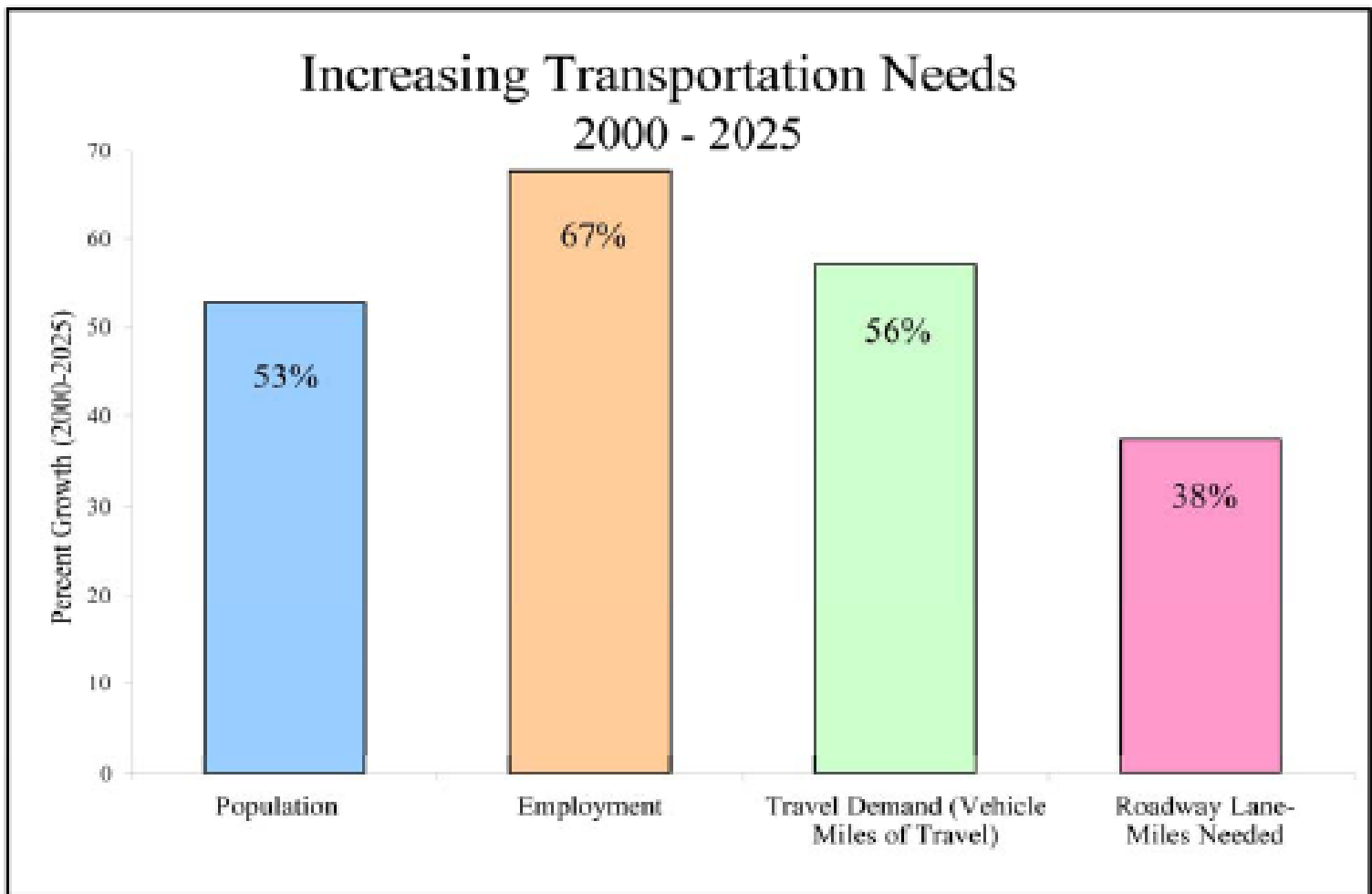
### Persons Per Acre



# Projected 2025 Population By Area



# What are our transportation needs?



# What is scenario planning?

- A means of considering the **‘what ifs’** of different development patterns and transportation options
- Allows for public discussion of **choices and tradeoffs**
- Use the scenarios to ask important questions

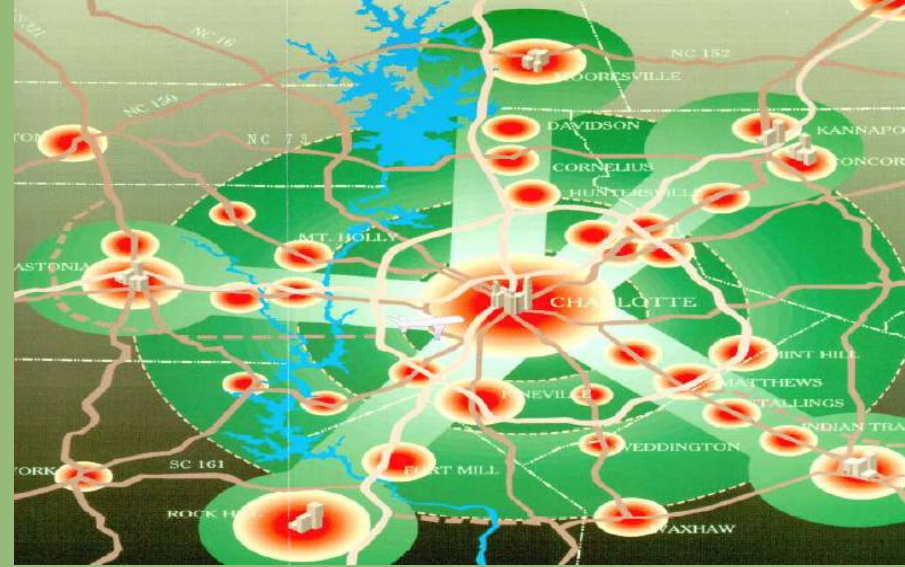
## How does it relate to planning for mobility?



- How our communities are put together influences our transportation options
- Different development patterns support different mobility options
- Helps identify transportation solutions that fit within people's preferences for how and where they want to live



# How will transit alternatives be developed?



- Identify where and how new growth could occur
- Identify transportation options to support existing development and new growth
- Identify corridors and areas where transit should be considered
- Evaluate different transit technologies and land use choices



# How do you fit into the process?

- Your voice matters!
- Your input will help to: guide decision making, evaluate options, and measure the tradeoffs
- “Big Picture” Citizen Stakeholders Team
- Next Steps:
  - Your input will serve as the basis for evaluating the effectiveness of alternative scenarios



# Tonight's Activities

- Break Out Group Discussions (1 hour)
  - What values are important to you?
    - EAR issues – are there others?
  - How are these values related to urban form and transportation?
  - How might we change or enhance places to better support our values?
- Summary Comments and Wrap Up (30 minutes)