

Hillsborough County MPO Transit Study

Beth Alden, AICP





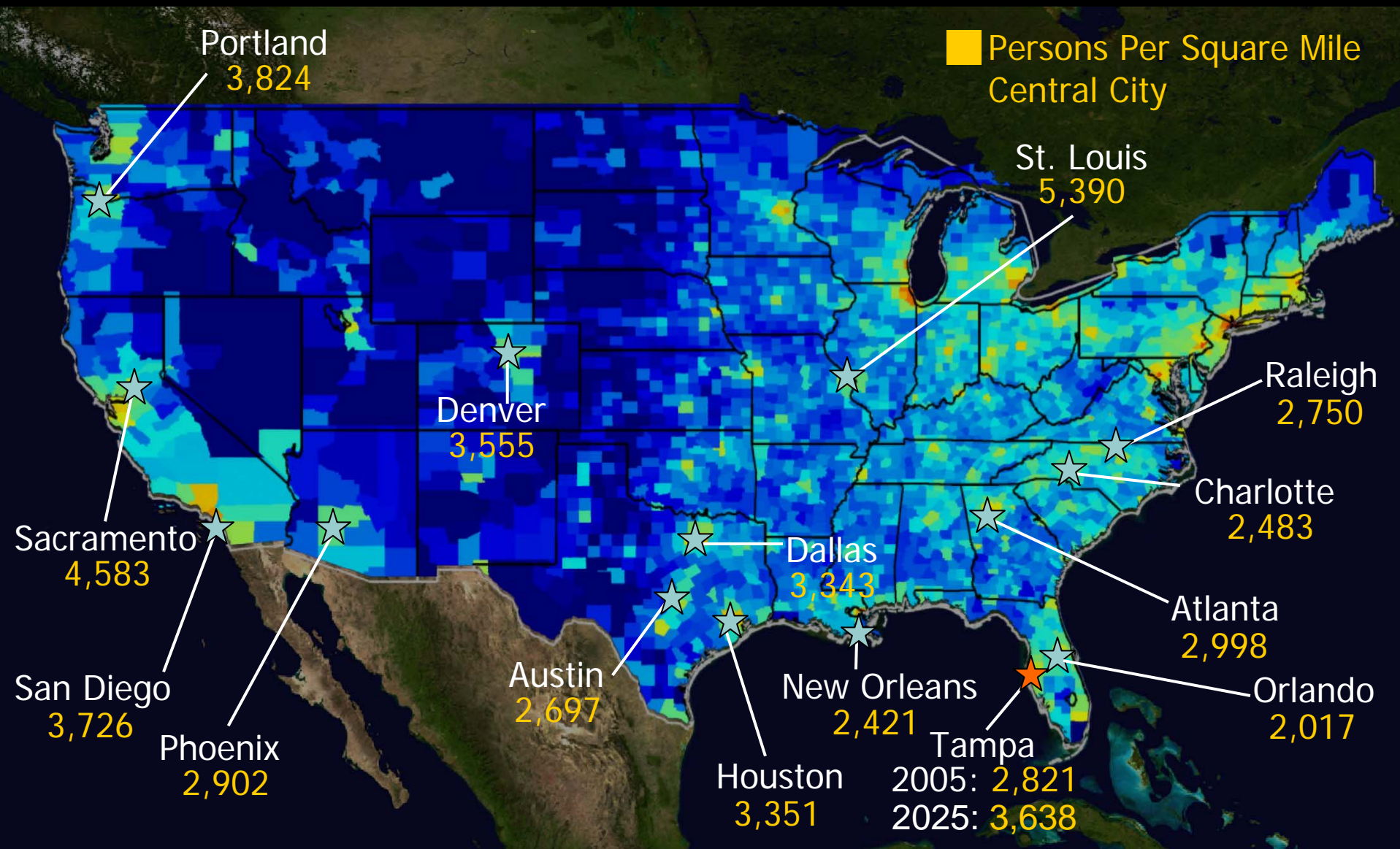
TRANSIT STUDY

Study Goals

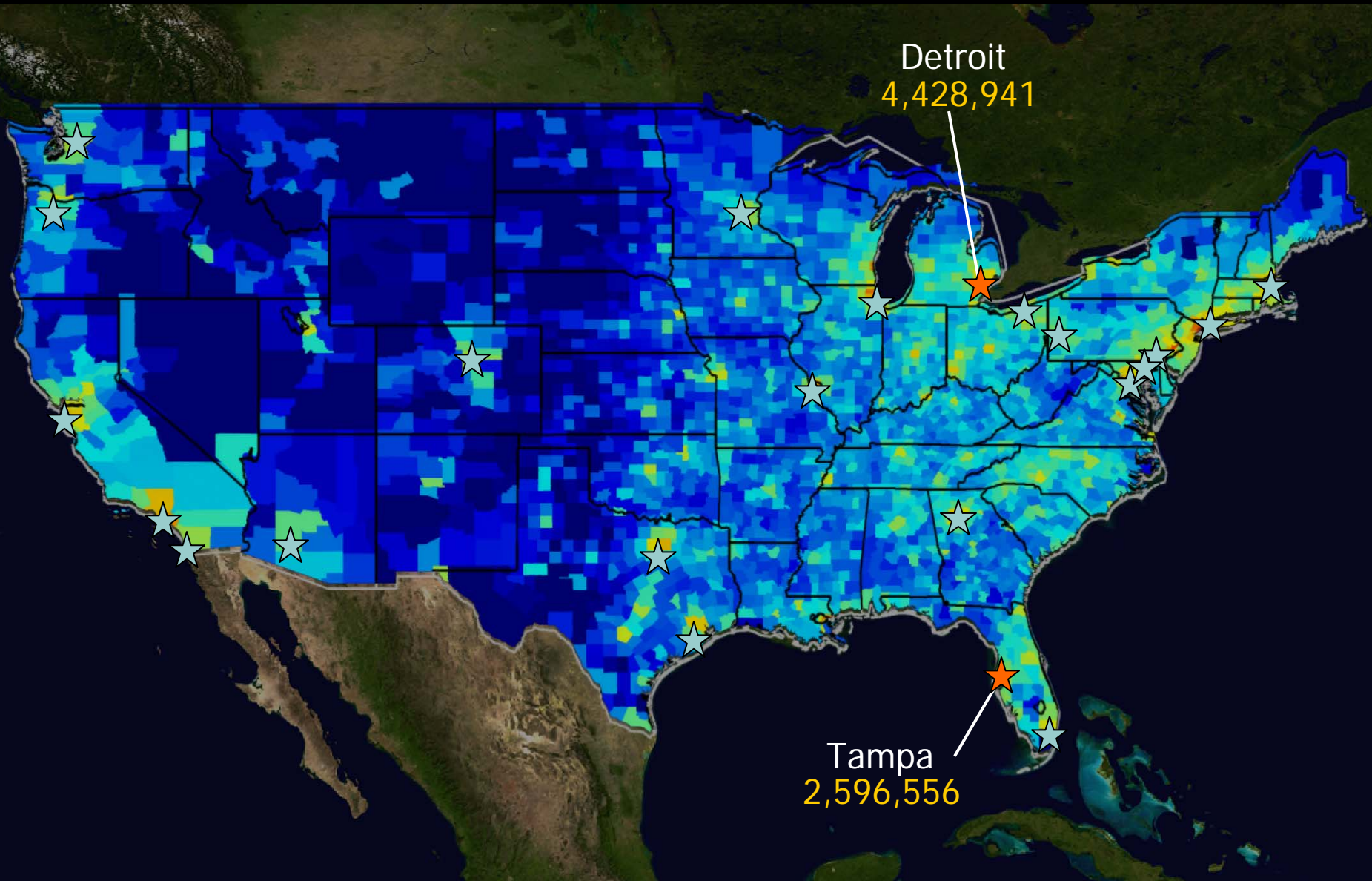
- Develop a concept plan for a countywide transit system
- Look at a variety of technologies
- Emphasize regional and sub-regional corridors
- Develop land use/transit strategies



Background: Comparable Areas with Planned or Existing Rail – Central City Population Density



Background: Top Metro Areas **without** Active Rail Initiatives or Existing Rail Systems



A map of Hillsborough County, Florida, highlighted in orange. The county's area is labeled as 1073 sq mi. Two inset maps are shown: a yellow one for Minneapolis (58 sq mi) and a green one for Atlanta (132 sq mi). A grey text box in the bottom left corner reads 'Background: Growth by 2025'.

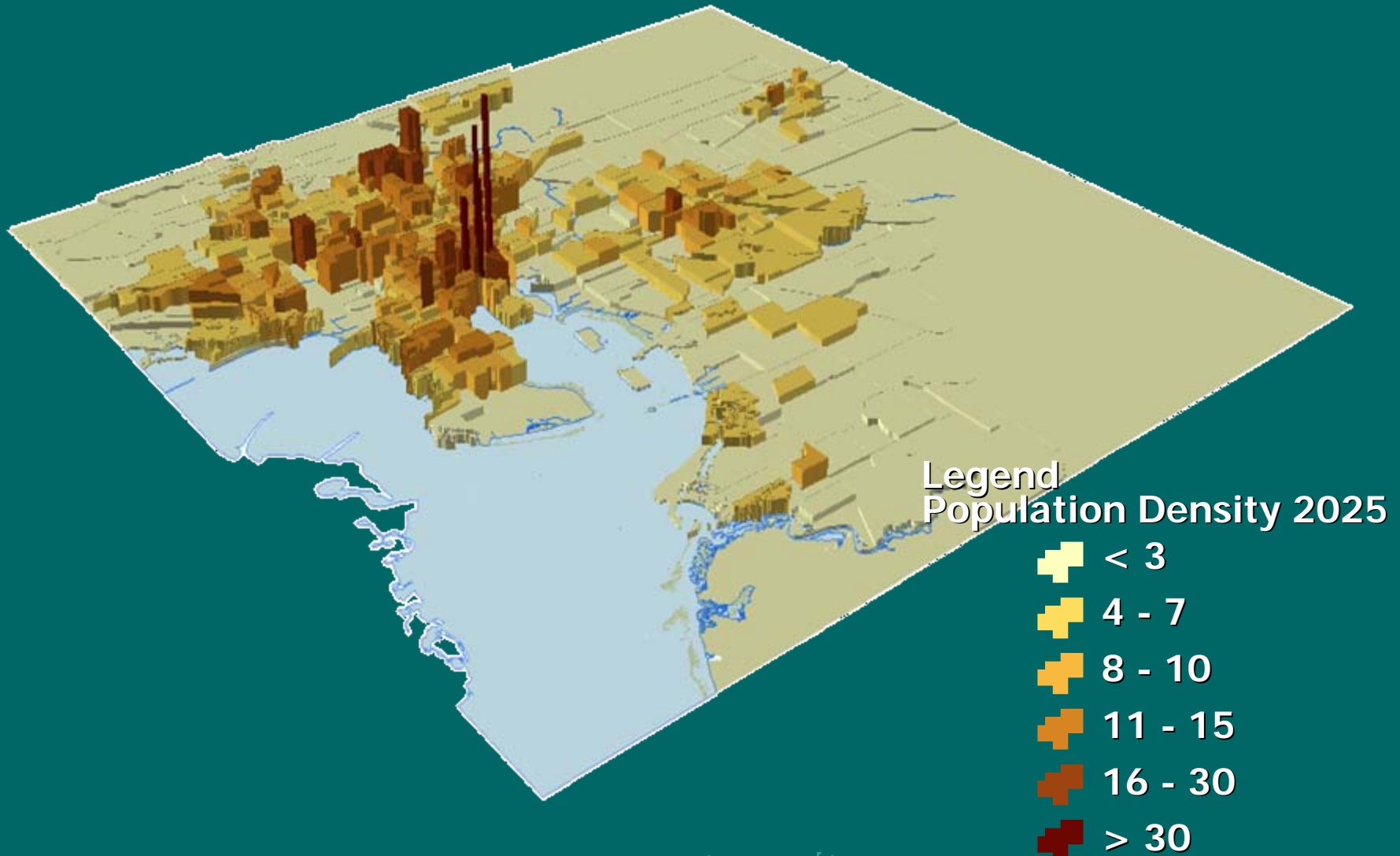
Hillsborough County
1073 sq mi

Minneapolis
58 sq mi

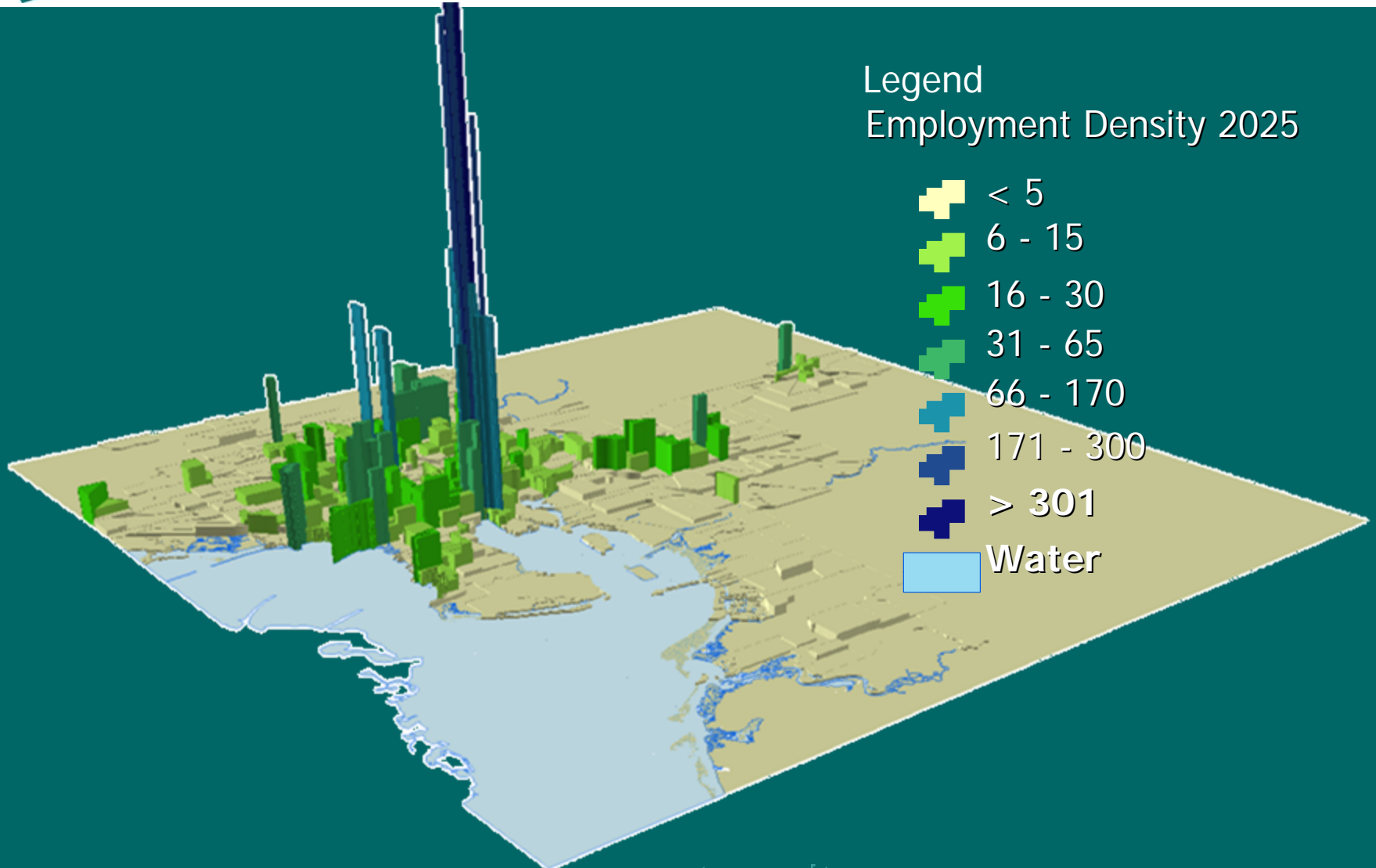
Atlanta
132 sq mi

**Background:
Growth by 2025**

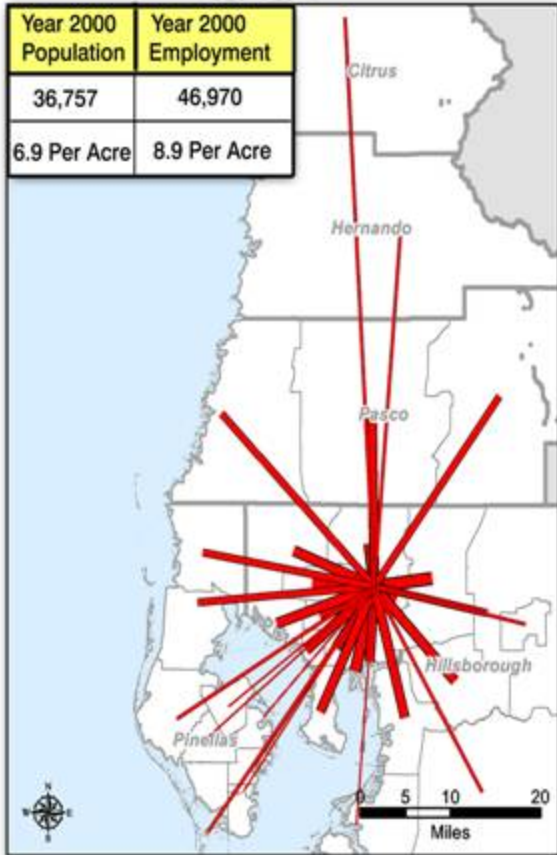
Background: Population Density 2025



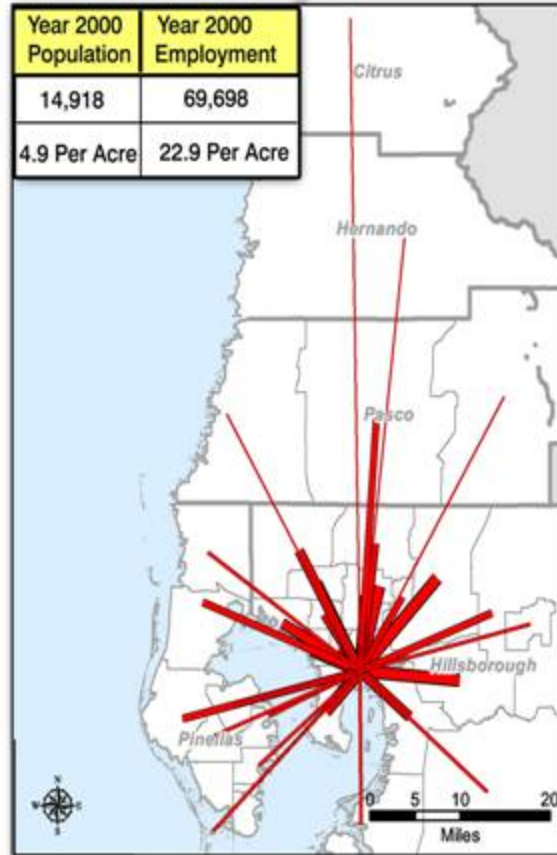
Background: Job Density 2025



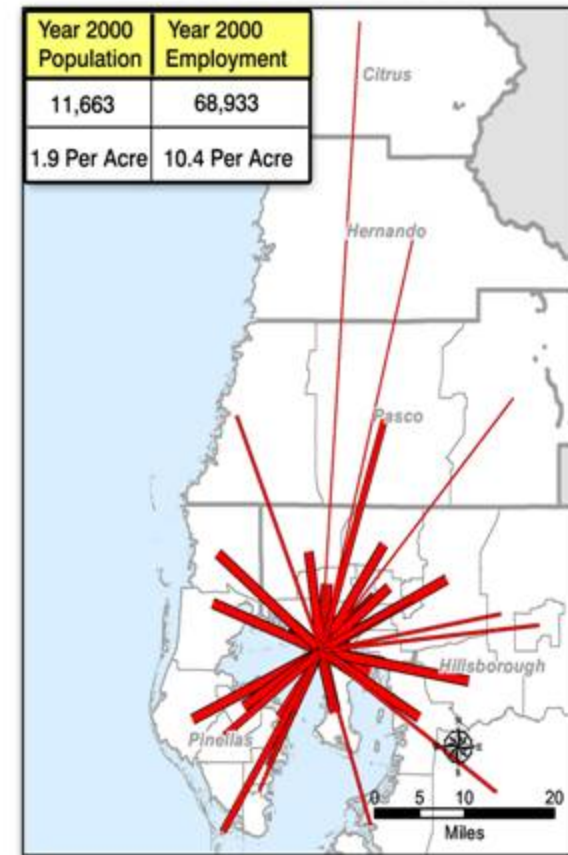
USF



Tampa



Westshore





- **The capacity of our transportation system is limiting our ability to grow.**
- **The nature of our growth has reduced our mobility options.**
- **Congestion and long distance driving are resulting in more time behind the wheel.**



- **The cost of housing and transportation is growing faster than economic opportunity.**
- **Household transportation costs are very high when driving is the only viable option.**
- **Workforce housing and access to jobs are increasingly important to the local economy.**



Design a Process for Decision-making

- Form Stakeholder Teams
- Create website and newsletters
- Develop transit scenarios
- Design and schedule workshops and other meetings to provide a forum for discussion



Conduct a public discussion of scenarios

- Meet with leaders, agency staff and public (coordination and information)
- Look at alternative futures: mobility, economy and quality of life implications
- “What do these choices mean to me?”
- Coordinate with Vision Hillsborough and comprehensive planning activities



Develop a preferred scenario

- Make technology choices
- Describe location and quality of service
- Develop preliminary cost estimates
- Identify the benefits, challenges, opportunities
- Provide an opportunity for comment and consensus
- Refine preferred scenario and identify priority investments



TRANSIT STUDY

Study Schedule

Values Workshops	Nov-Dec
Briefings and Website	End of Jan
Stakeholder Teams	Start Feb
Workshop	Mar
Preferred Scenario	Jun
Refined Scenario	Oct
Prioritization and Phasing	Nov-Dec

“Be guilty of trying to put in something for everyone.”

119 miles of rapid transit

18 miles of Bus Rapid Transit (BRT)

31 new Park-n-Rides with over 21,000 new spaces

Enhanced Bus Network & Transit Hubs (FastConnects)

Development of Denver Union Station



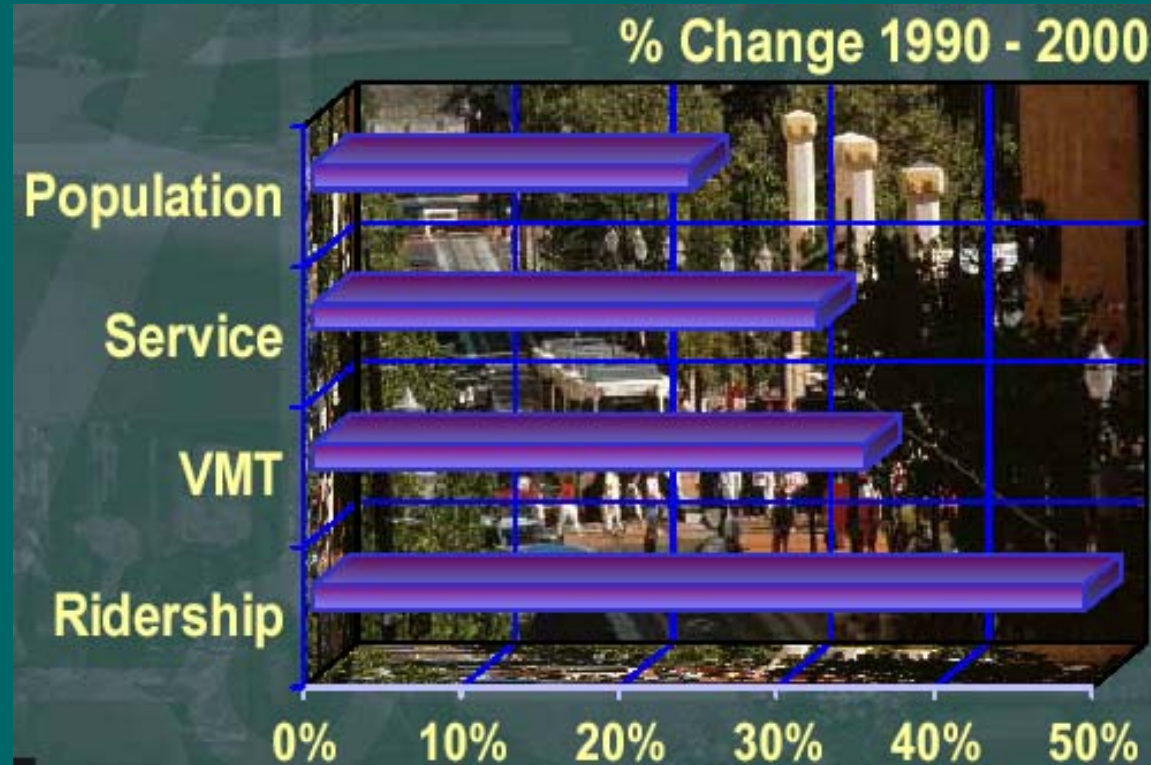
Guest Speakers: Dallas Transit-Oriented Development



A Transit Village emerged around the
DART Rail Downtown Plano Station

Guest Speakers: Portland – The Lifestyle City

- Portland is the number one destination in the country for working adults under age 35
- \$5.5 Billion in investment
- Transit ridership is growing faster than VMT





Common Themes

- I want more quality time spent with my family, friends, and less time in traffic.
- Give me more reliable travel times.
- I like a growing economy, but if traffic grows with it, will gridlock choke the economy?



Common Themes

- Let's grow our small towns and save some open space rather than sprawling everywhere.
- Traffic cuts through my community. I want to feel safe on my street and I want my child or elderly parent to be safe too.
- I want goods, services and jobs to be more accessible, especially if I don't or can't drive.

Transit Scenarios Game

Tuesday, March 13th

Workshops at 1:00 p.m. & 6:00 p.m.

Florida Center Building

Next to the Botanical Gardens at the Florida State Fairgrounds

Enter at the Orient Road Security Gate for

FREE PARKING

FLORIDA

STATE FAIRGROUNDS

Attend
either
workshop!



www.mpotransit.org