

Hillsborough County MPO Transit Study

MPO Meeting

October 2, 2007

Alan Steinbeck, AICP



Transit Technologies



Technologies Considered

- Bus
- Light Rail
- Commuter Rail





- Standard or articulated high-capacity vehicles
- Special lanes or signal priority – Bus Rapid Transit
- Advantage of flexible service
- Congestion problem



- Locomotive pulling passenger cars
- Shares freight tracks
- Flexible capacity
- Peak hour service
- Long haul or suburb to city
- Needs to run flat and straight



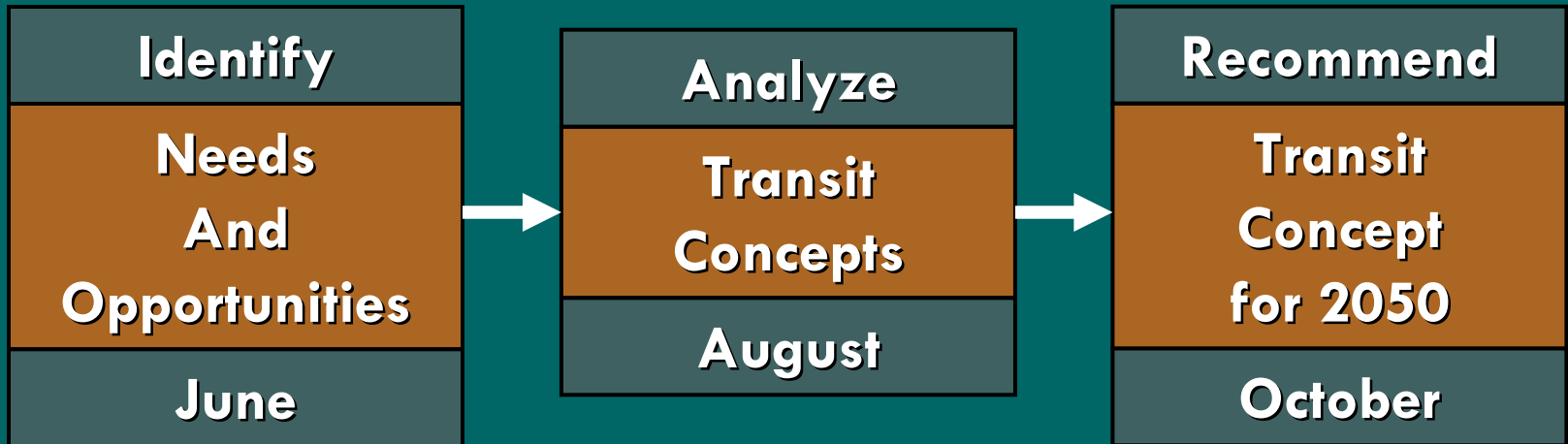


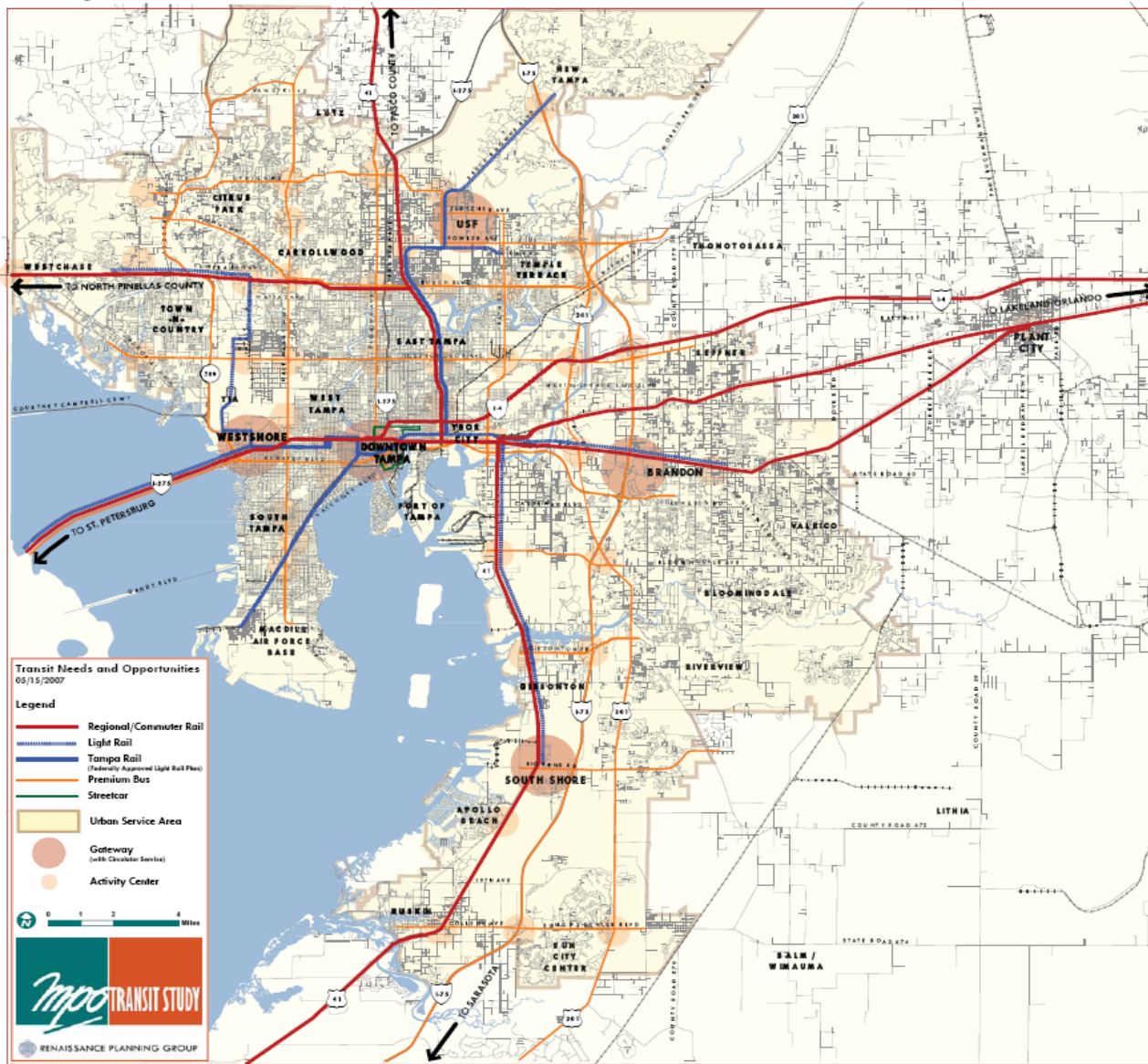
- Powered from above by electric wires
- Has its own tracks
- Frequent service
- All day service
- Suburb to city and urban area travel
- Quick acceleration
- Can climb and turn



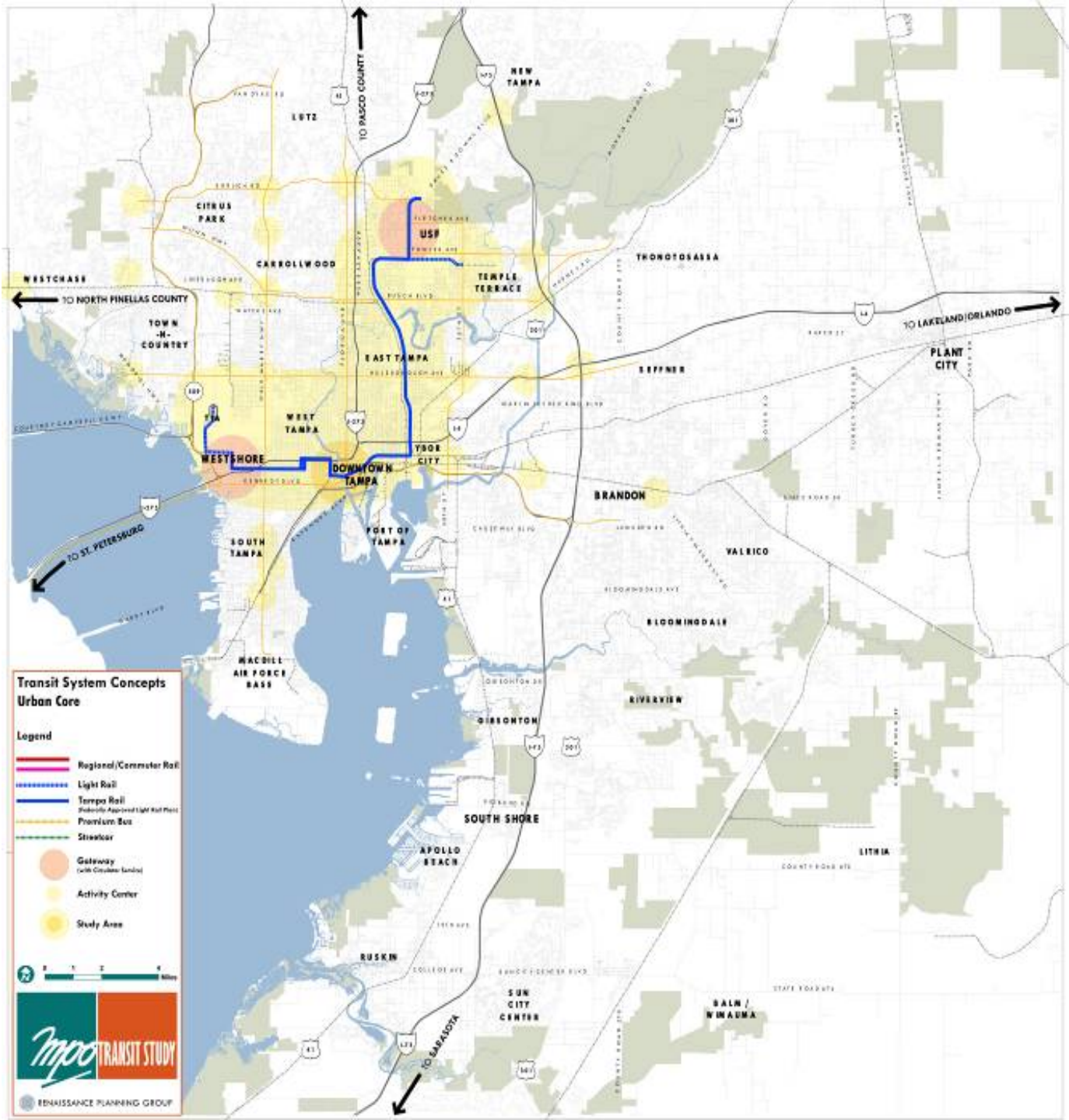
Study Summary



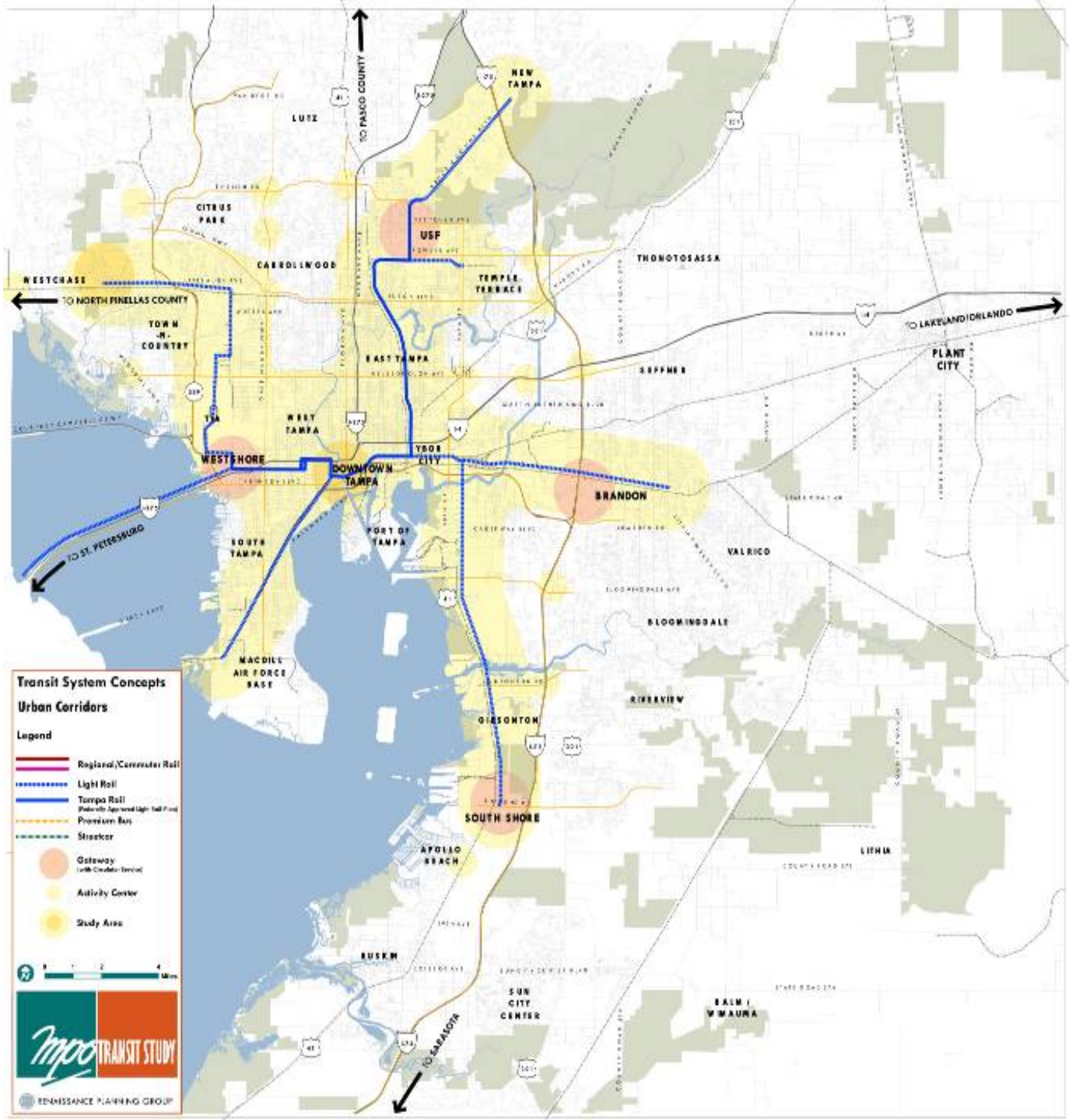




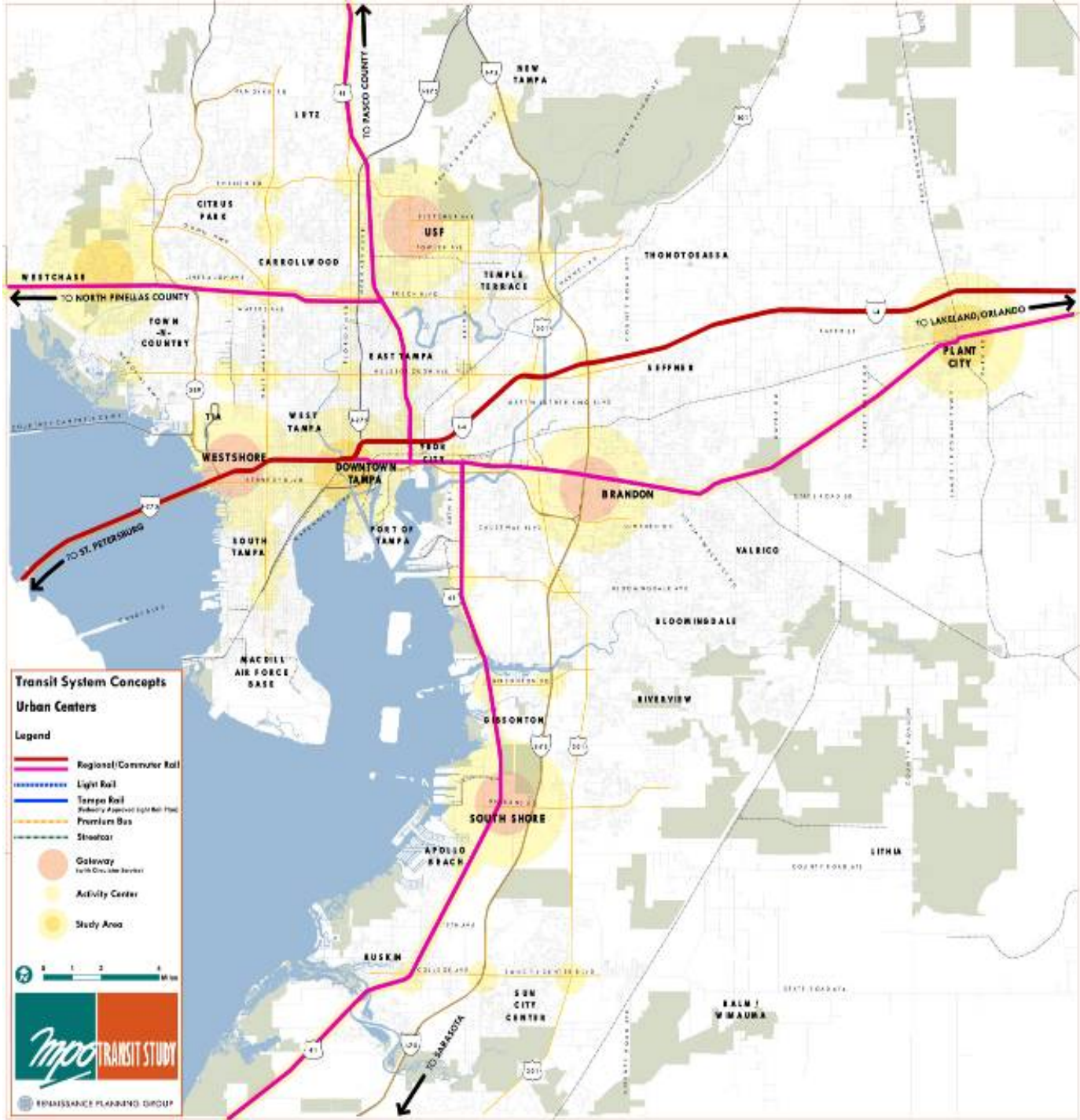
**Concept A:
Diagram**



**Concept B:
Diagram**



**Concept C:
Diagram**



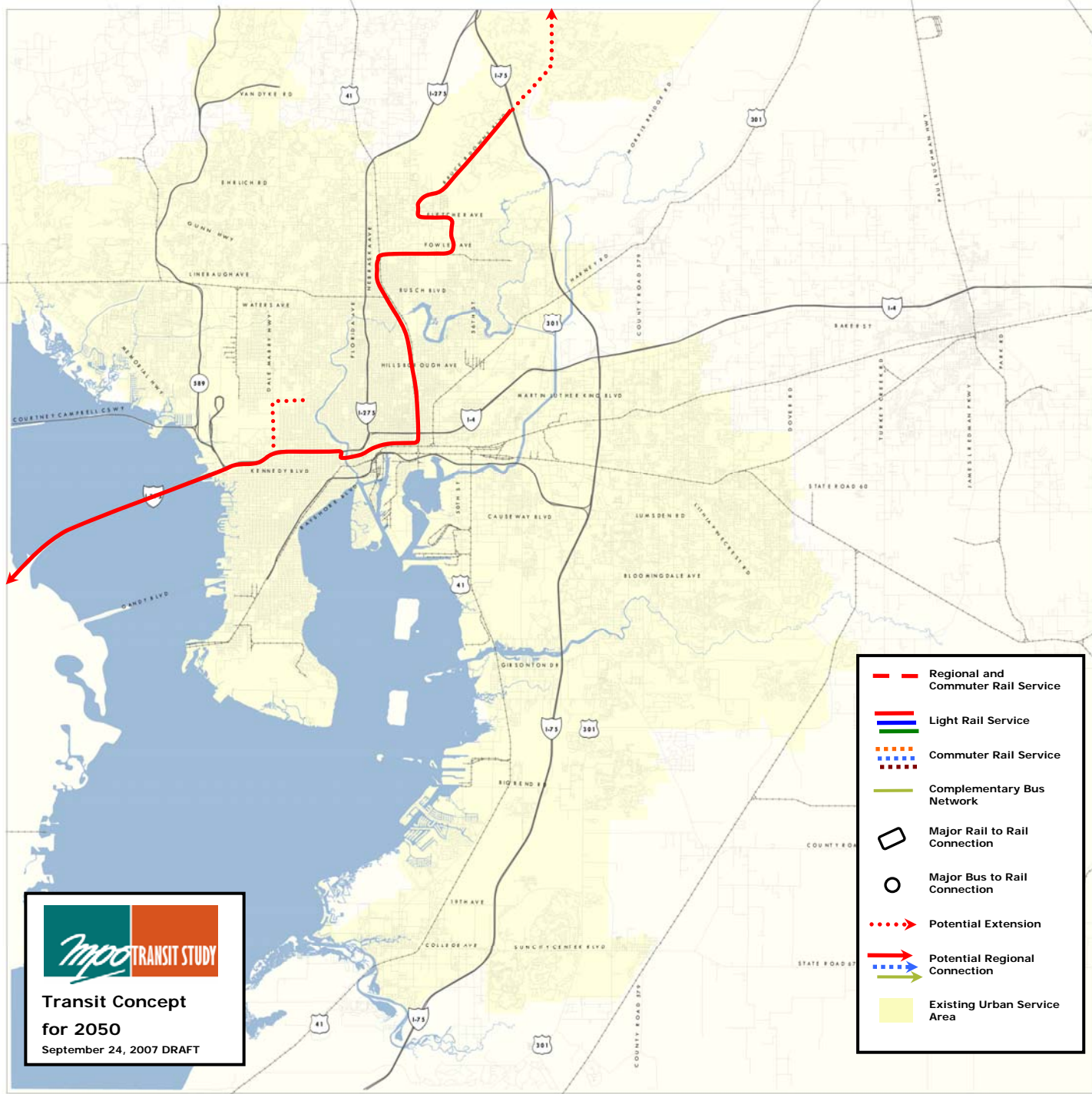


Getting to the 2050 Concept

- Serving existing and emerging activity centers
- Serving growing and redeveloping areas
- Measuring the potential for station area development
- Respecting community character and land use policies
- Grounding ourselves in reality
 - Appropriate transit technology
 - Rights of way
 - Costs

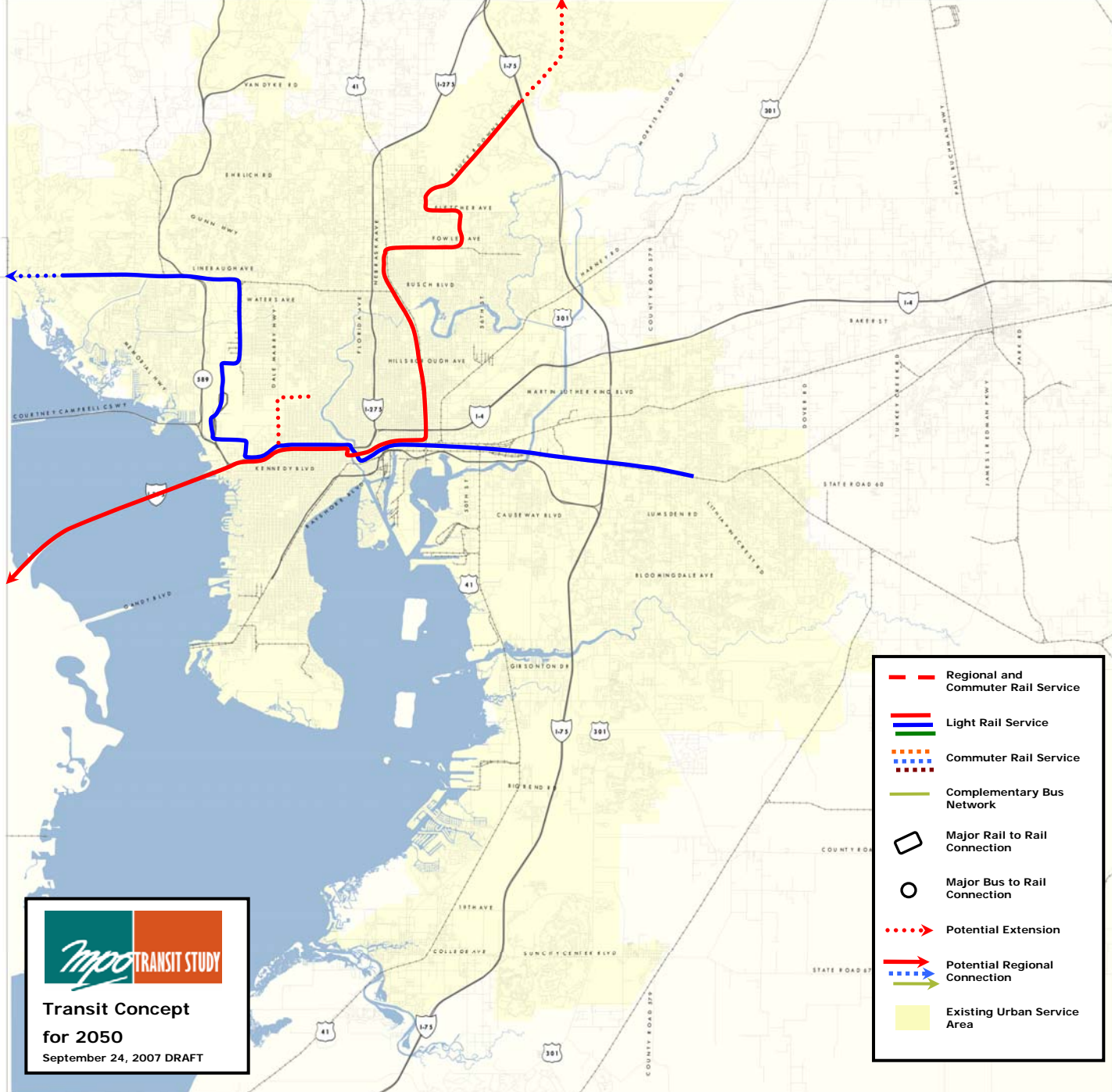
Transit Concept for 2050















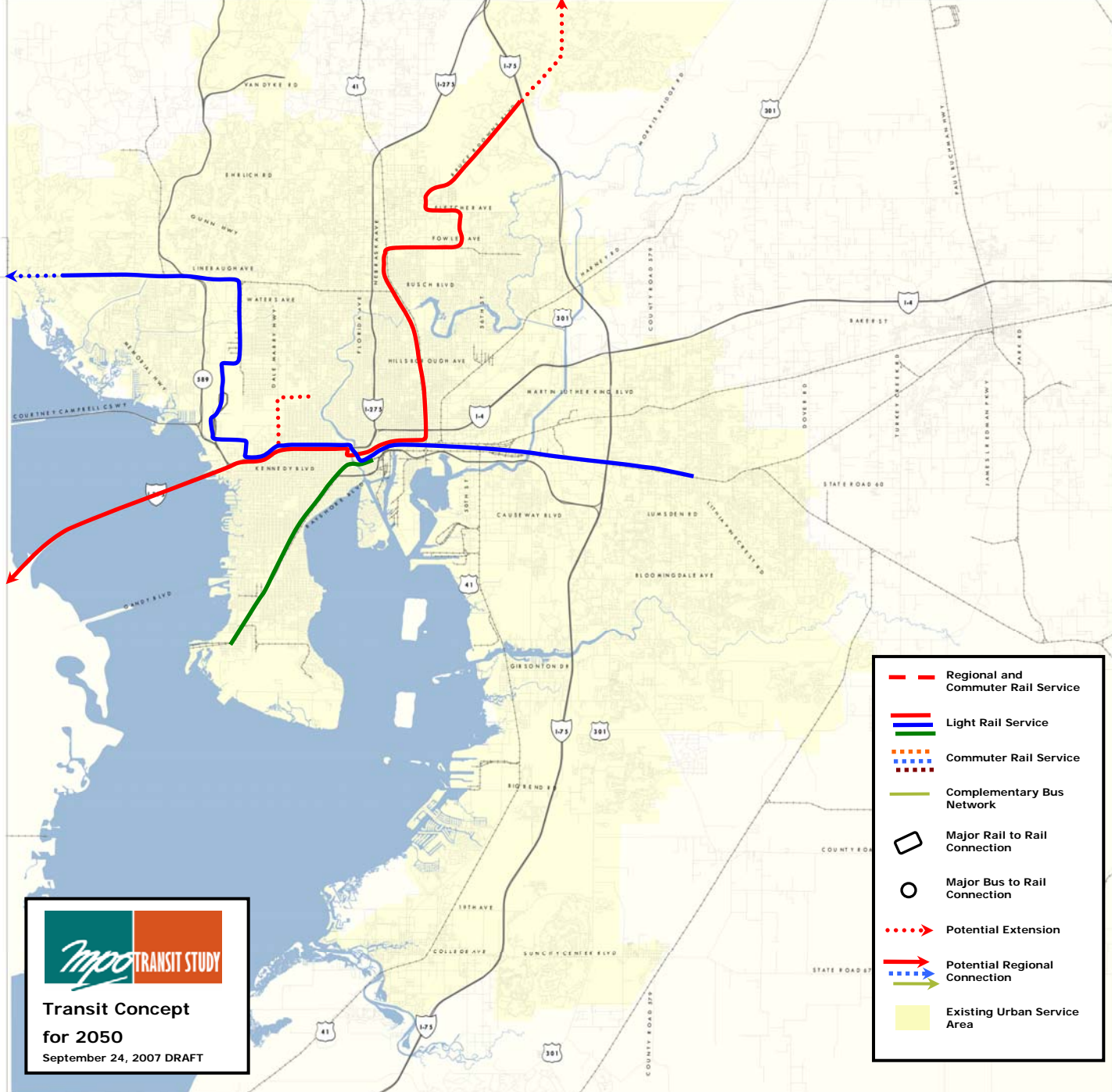
**Transit Concept
for 2050**
September 24, 2007 DRAFT

- Regional and Commuter Rail Service
- ▬ Light Rail Service
- ▬ Commuter Rail Service
- ▬ Complementary Bus Network
- Major Rail to Rail Connection
- Major Bus to Rail Connection
- ⋯→ Potential Extension
- Potential Regional Connection
- Potential Commuter Rail Connection
- Existing Urban Service Area



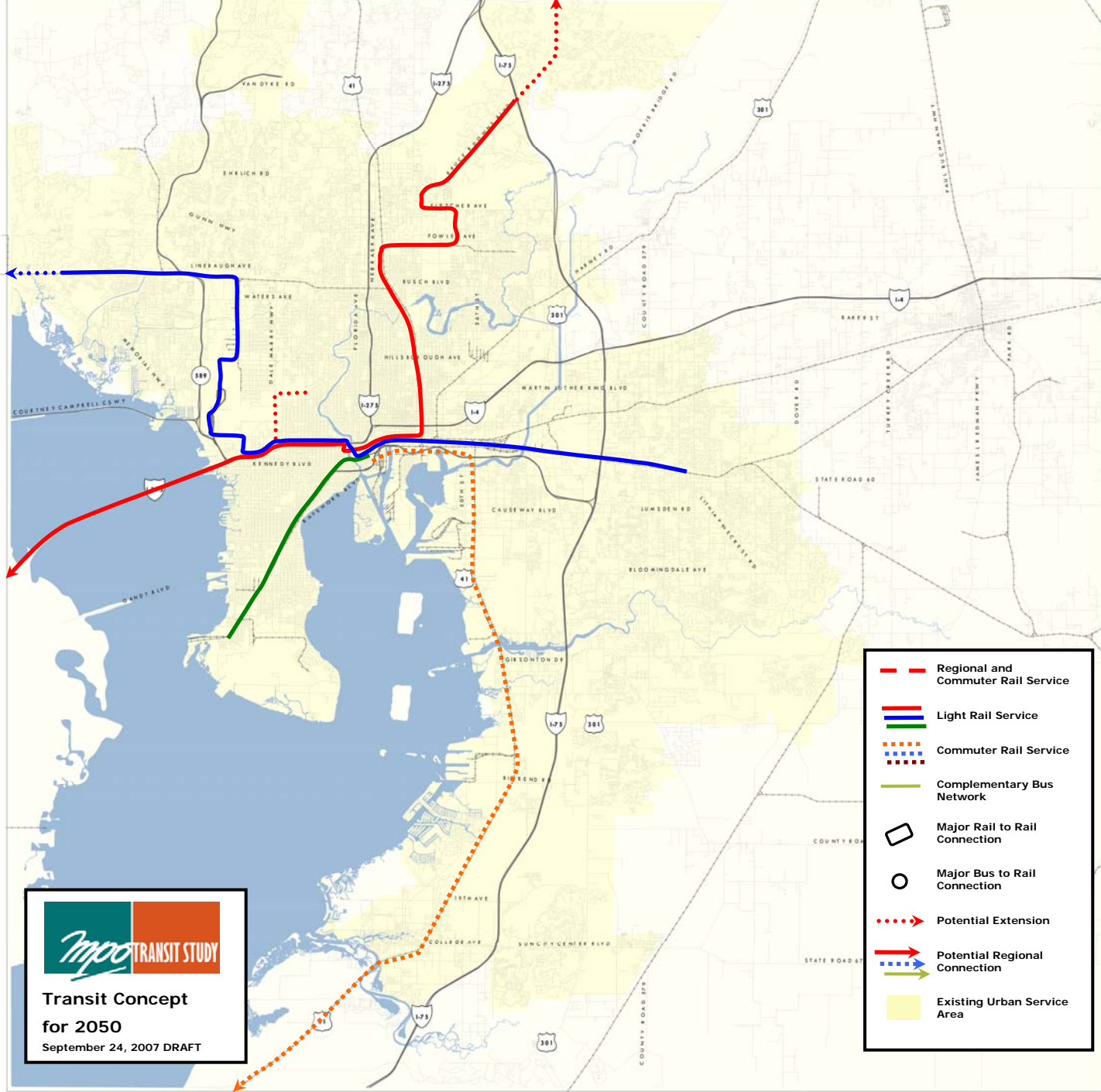
**Transit Concept
for 2050**
September 24, 2007 DRAFT

-  Regional and Commuter Rail Service
-  Light Rail Service
-  Commuter Rail Service
-  Complementary Bus Network
-  Major Rail to Rail Connection
-  Major Bus to Rail Connection
-  Potential Extension
-  Potential Regional Connection
-  Potential Regional Connection
-  Existing Urban Service Area



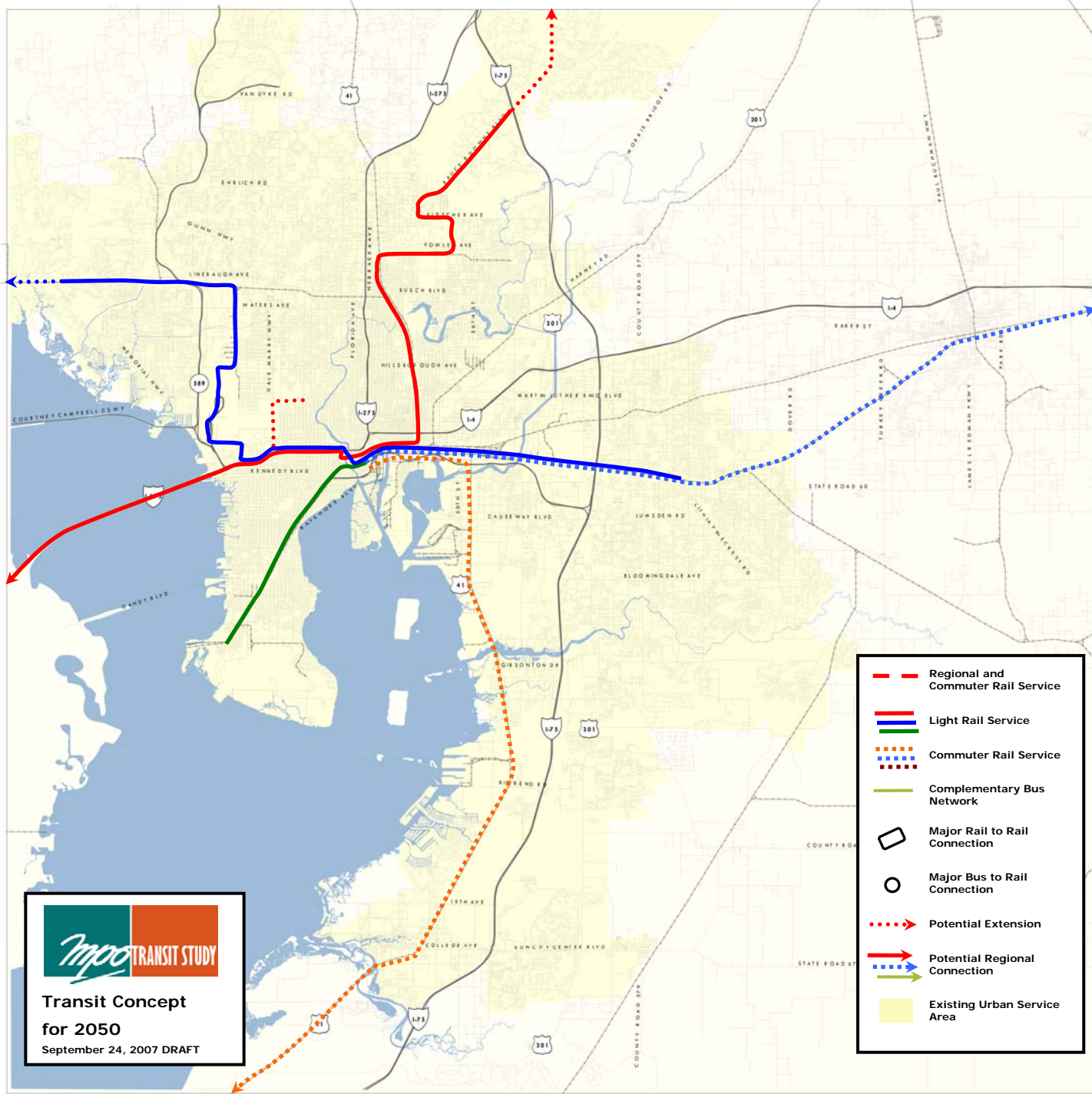
**Transit Concept
for 2050**
September 24, 2007 DRAFT

- Regional and Commuter Rail Service
- — Light Rail Service
- ⋯ ⋯ Commuter Rail Service
- Complementary Bus Network
- Major Rail to Rail Connection
- Major Bus to Rail Connection
- ⋯ Potential Extension
- → → Potential Regional Connection
- Existing Urban Service Area





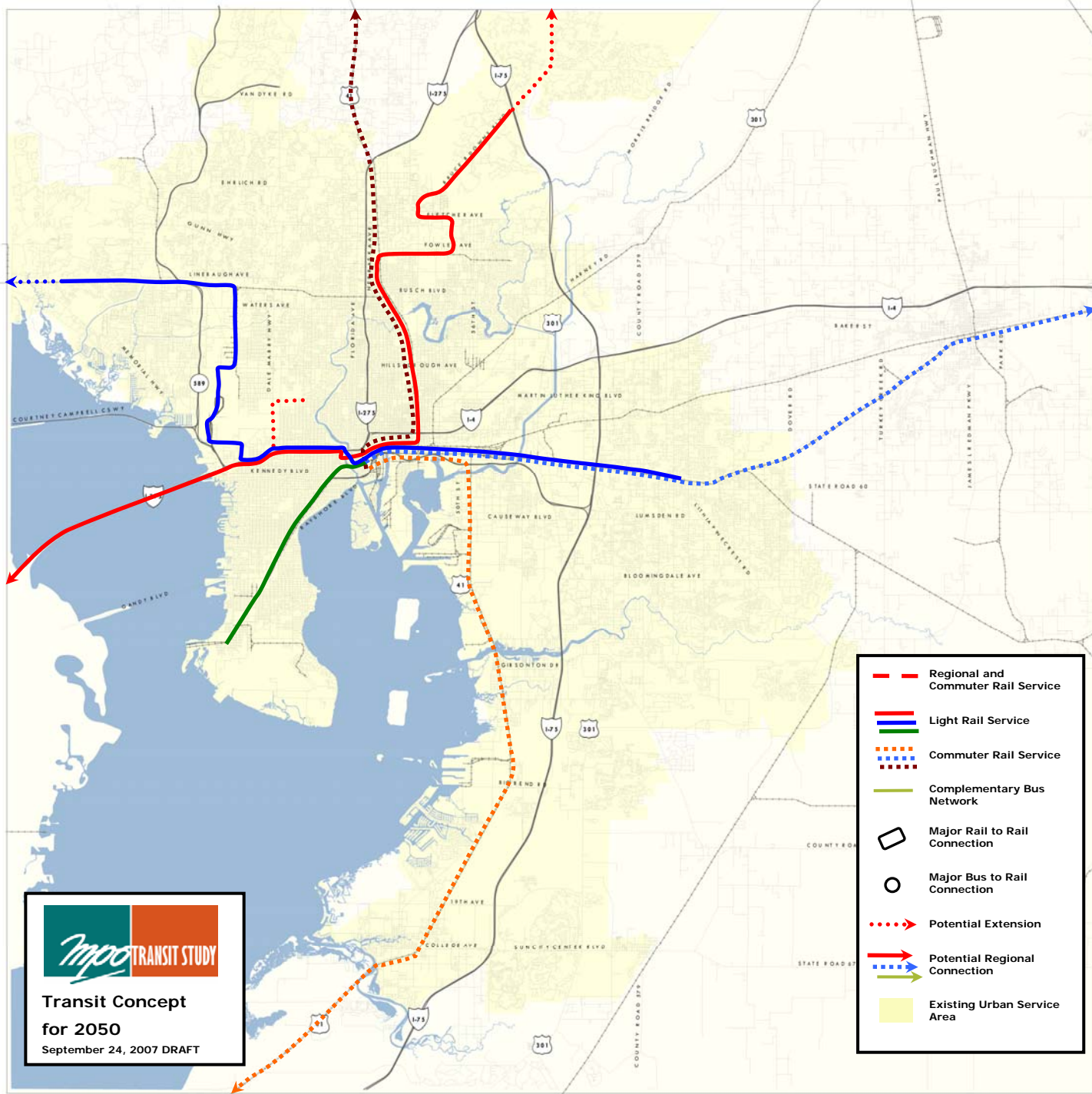
**Transit Concept
for 2050**
September 24, 2007 DRAFT

- Regional and Commuter Rail Service
- — Light Rail Service
- - - Commuter Rail Service
- Complementary Bus Network
- Major Rail to Rail Connection
- Major Bus to Rail Connection
- - - Potential Extension
- Potential Regional Connection
- Existing Urban Service Area



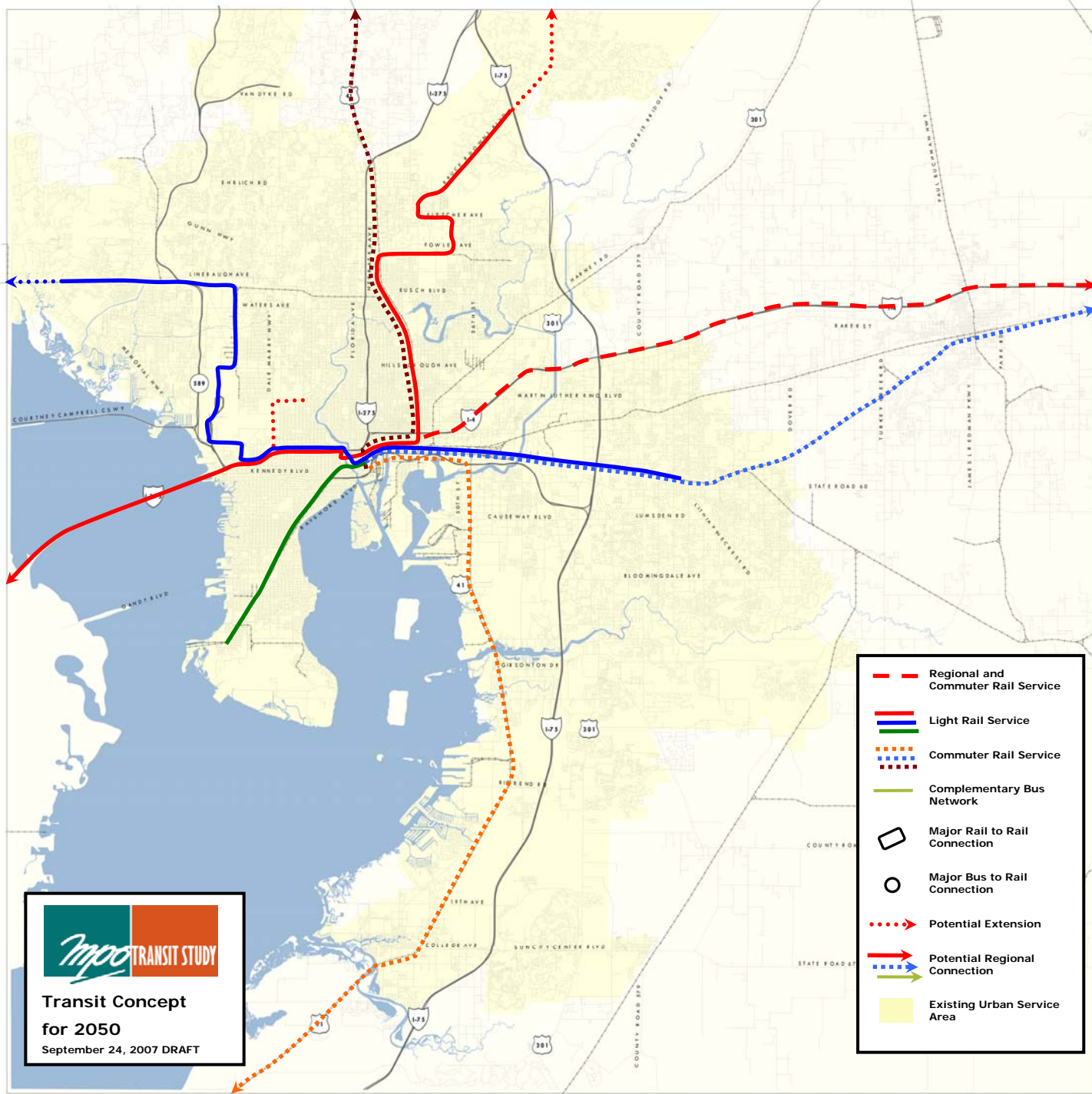

Transit Concept
for 2050
 September 24, 2007 DRAFT

- Regional and Commuter Rail Service
- Light Rail Service
- Light Rail Service
- - - Commuter Rail Service
- Complementary Bus Network
-  Major Rail to Rail Connection
-  Major Bus to Rail Connection
- - - Potential Extension
- Potential Regional Connection
- Potential Regional Connection
- Potential Regional Connection
- Existing Urban Service Area



**Transit Concept
for 2050**
September 24, 2007 DRAFT

- Regional and Commuter Rail Service
- Light Rail Service
- Light Rail Service
- ⋯ Commuter Rail Service
- Complementary Bus Network
- Major Rail to Rail Connection
- Major Bus to Rail Connection
- ⋯→ Potential Extension
- Potential Regional Connection
- Potential Regional Connection
- Potential Regional Connection
- Existing Urban Service Area





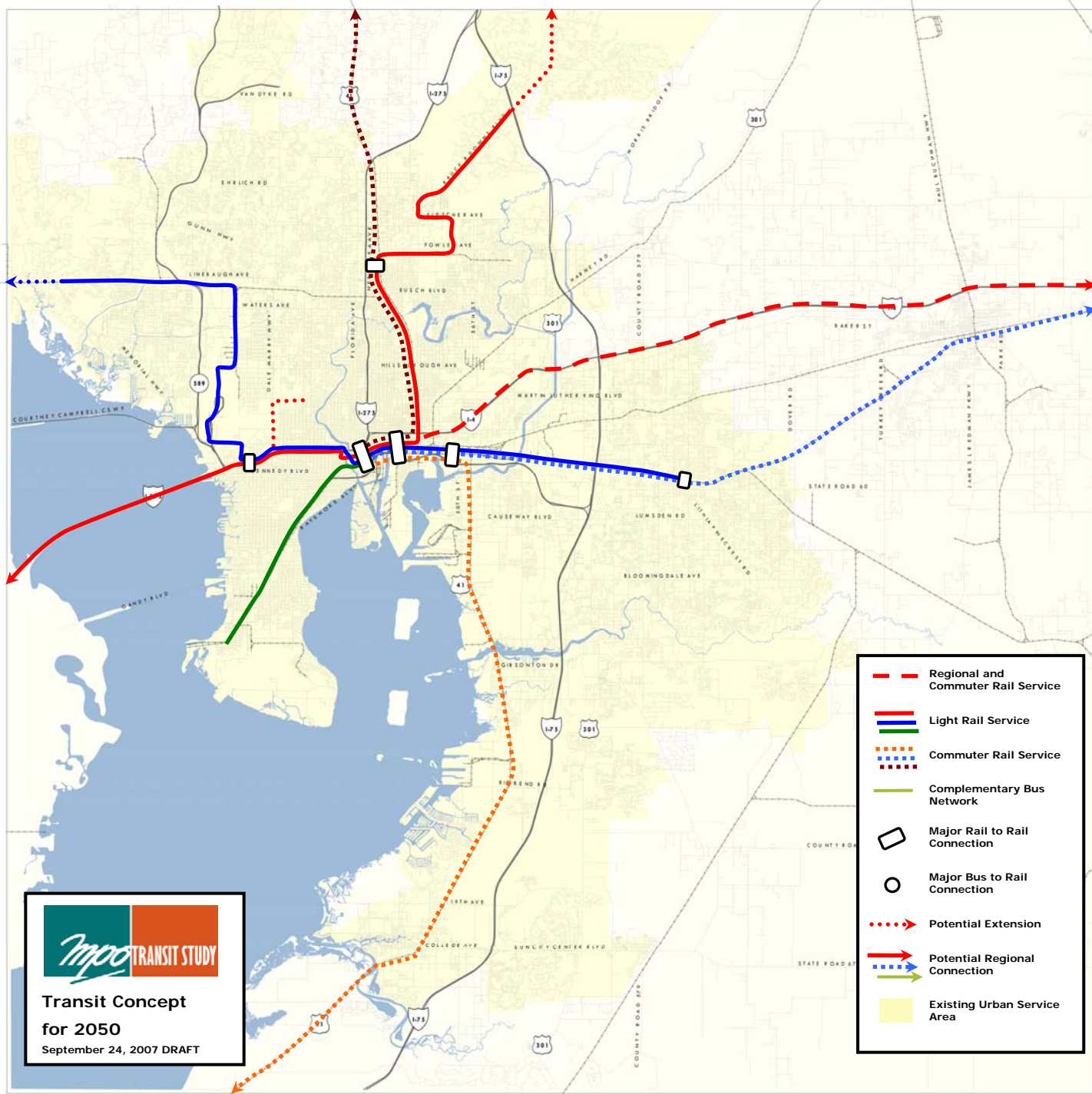


Transit Concept



for 2050

 September 24, 2007 DRAFT

- Regional and Commuter Rail Service
- Light Rail Service
- Light Rail Service
- ⋯ Commuter Rail Service
- ⋯ Commuter Rail Service
- Complementary Bus Network
-  Major Rail to Rail Connection
-  Major Bus to Rail Connection
- ⋯ Potential Extension
- Potential Regional Connection
- Potential Regional Connection
- Existing Urban Service Area

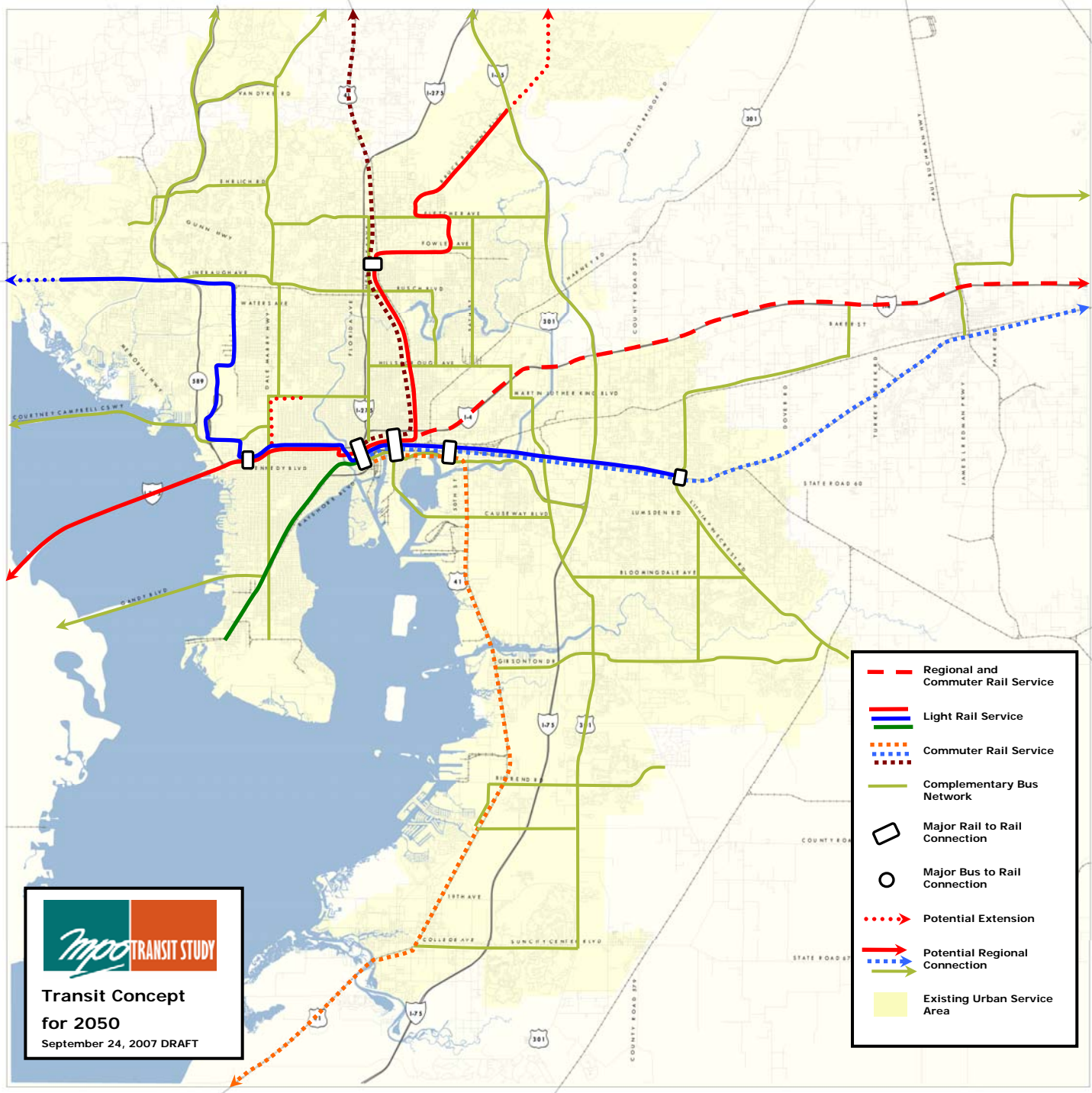



Transit Concept
for 2050
 September 24, 2007 DRAFT

- Regional and Commuter Rail Service
- Light Rail Service
- Light Rail Service
- ⋯ Commuter Rail Service
- ⋯ Commuter Rail Service
- Complementary Bus Network
-  Major Rail to Rail Connection
-  Major Bus to Rail Connection
- ⋯ Potential Extension
- Potential Regional Connection
- Potential Regional Connection
- Potential Regional Connection
- Existing Urban Service Area



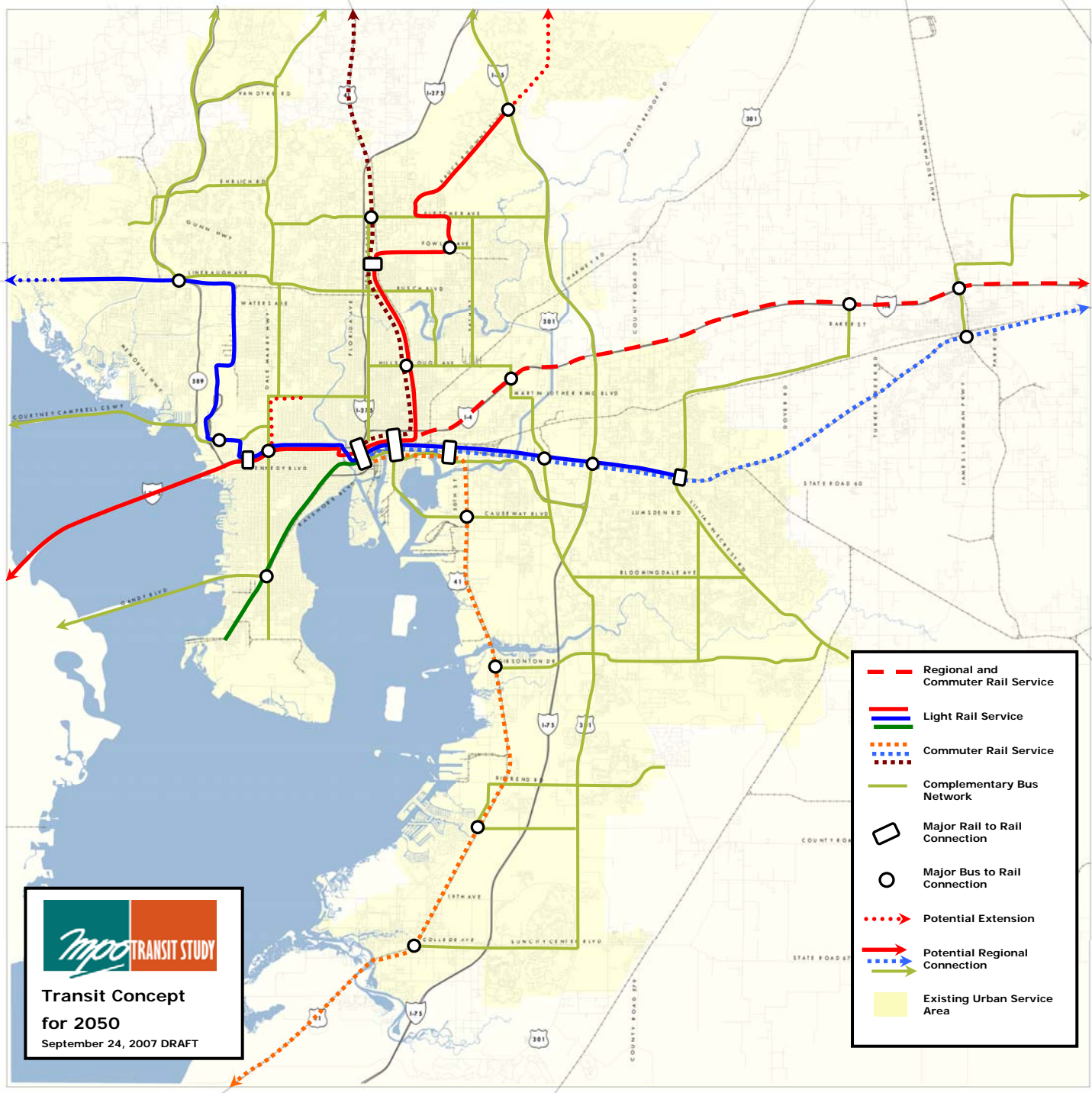
**Transit Concept
for 2050**
September 24, 2007 DRAFT











- Regional and Commuter Rail Service
- Light Rail Service
- Light Rail Service
- ⋯ Commuter Rail Service
- ⋯ Commuter Rail Service
- Complementary Bus Network
- Major Rail to Rail Connection
- Major Bus to Rail Connection
- ⋯ Potential Extension
- ➔ Potential Regional Connection
- ➔ Potential Regional Connection
- ➔ Potential Regional Connection
- Existing Urban Service Area



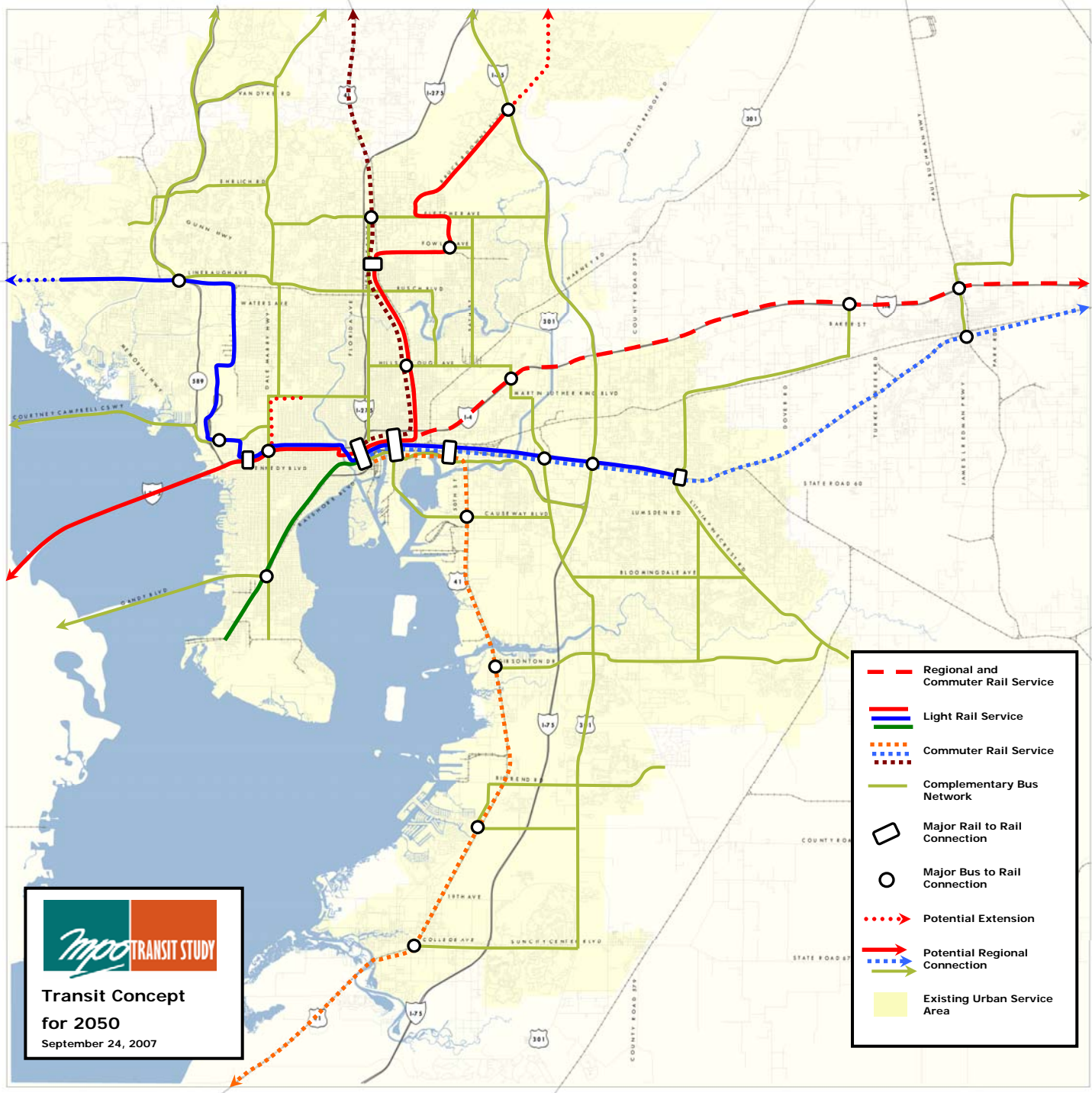
**Transit Concept
for 2050**
September 24, 2007 DRAFT













-  Regional and Commuter Rail Service
-  Light Rail Service
-  Complementary Bus Network
-  Major Rail to Rail Connection
-  Major Bus to Rail Connection
-  Potential Extension
-  Potential Regional Connection
-  Existing Urban Service Area



- **MPO for information in October**
- **MPO for action in November**
- **Incorporate into the LRTP update**
- **Inform the TBARTA planning process**



-  Regional and Commuter Rail Service
-  Light Rail Service
-  Commuter Rail Service
-  Complementary Bus Network
-  Major Rail to Rail Connection
-  Major Bus to Rail Connection
-  Potential Extension
-  Potential Regional Connection
-  Potential Regional Connection
-  Existing Urban Service Area