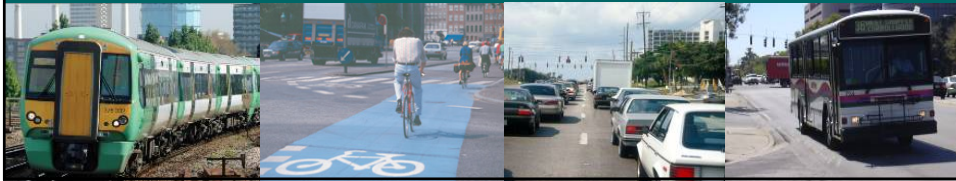
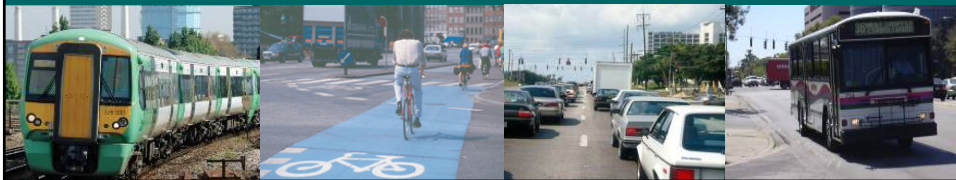


Hillsborough County MPO Transit Study

Transit Concept for 2050
September 28, 2007
Alan Steinbeck, AICP



Transit Technologies



- Bus
- Light Rail
- Commuter Rail



- Standard or articulated high-capacity vehicles
- Special lanes or signal priority – Bus Rapid Transit
- Advantage of flexible service
- Congestion problem



Commuter Rail

- Locomotive pulling passenger cars
- Shares freight tracks
- Flexible capacity
- Peak hour service
- Long haul or suburb to city
- Needs to run flat and straight

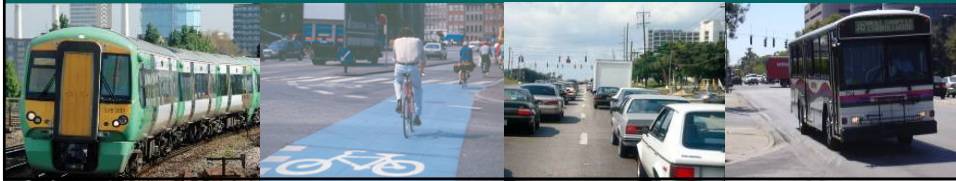


Light Rail

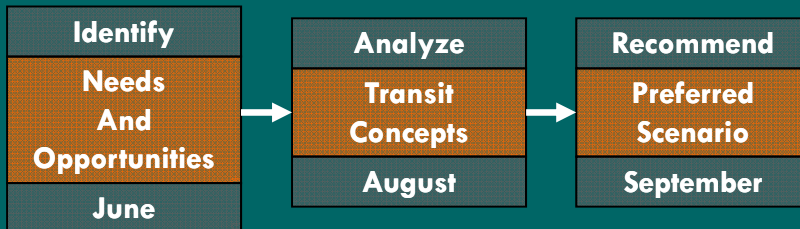
- Powered from above by electric wires
- Has its own tracks
- Frequent service
- All day service
- Suburb to city and urban area travel
- Quick acceleration
- Can climb and turn

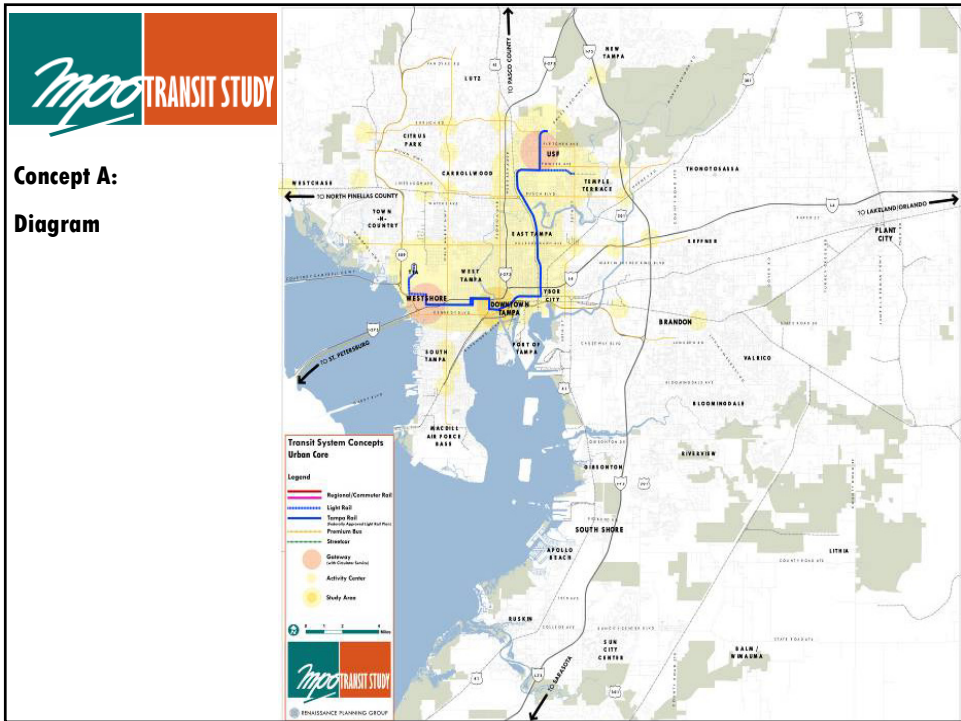
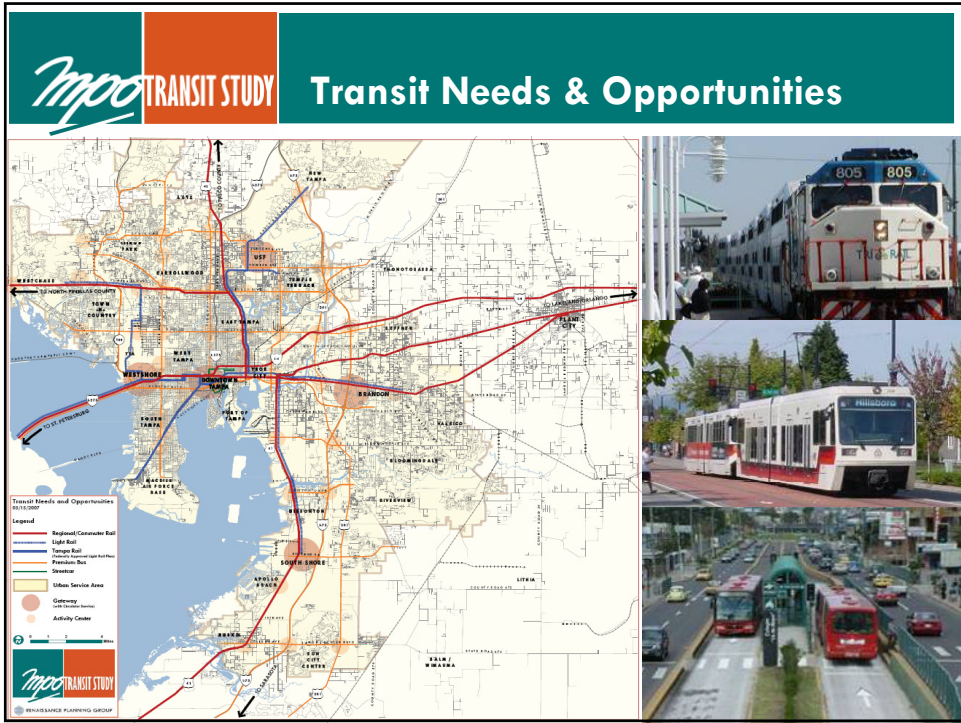


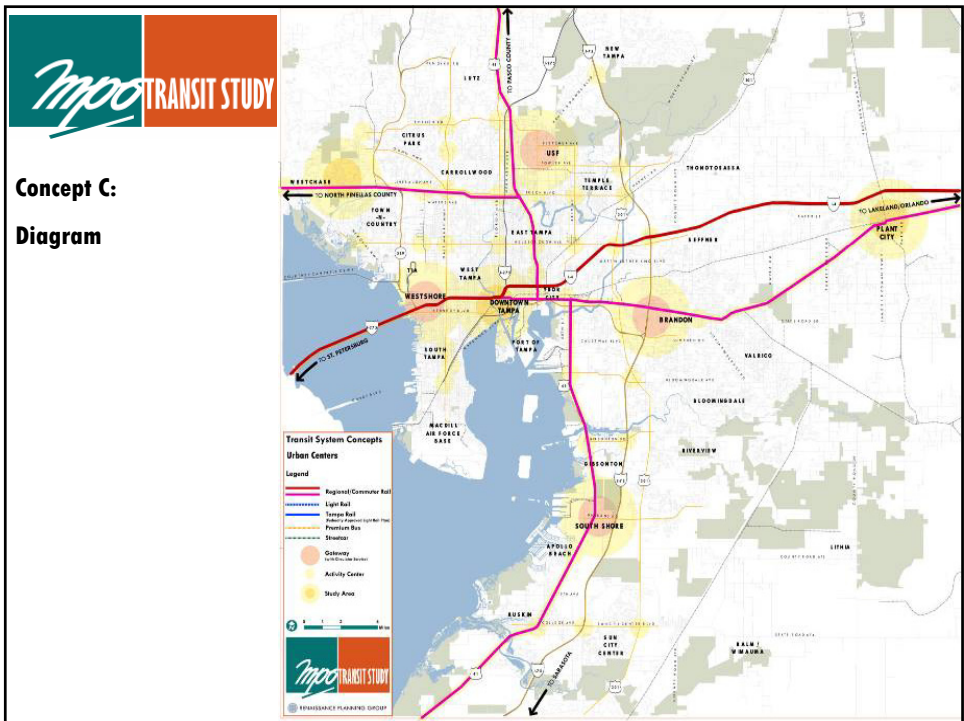
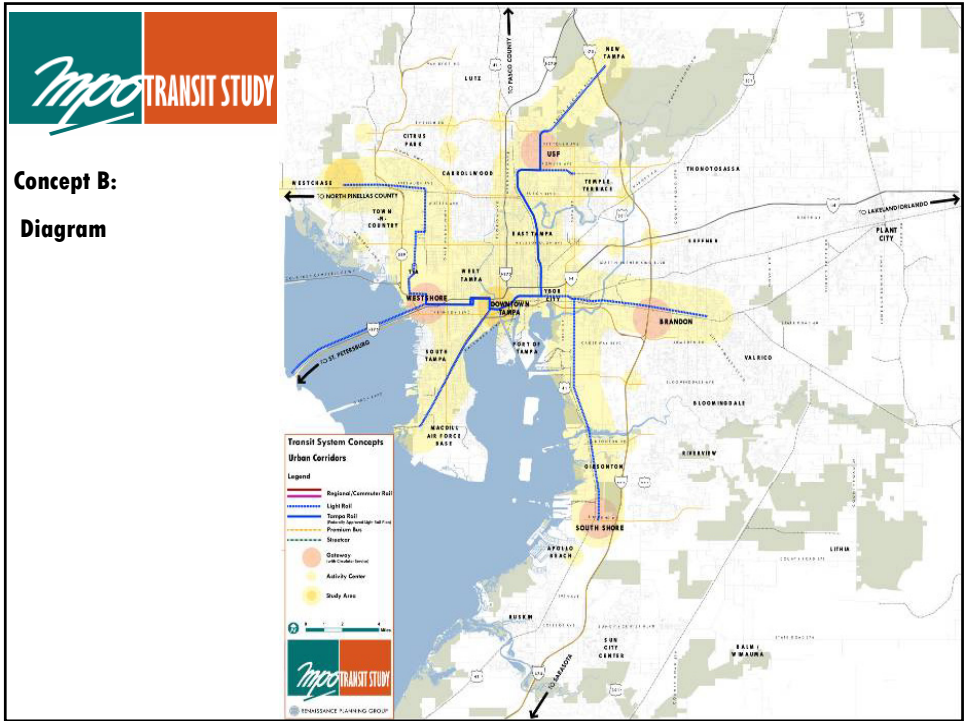
Study Summary



MPO Transit Study Process









TRANSIT STUDY

Getting to the 2050 Concept

- Serving existing and emerging activity centers
- Serving growing and redeveloping areas
- Measuring the potential for station area development
- Respecting community character and land use policies
- Grounding ourselves in reality
 - Appropriate transit technology
 - Rights of way
 - Costs



TRANSIT STUDY

Transit Concept for 2050

