

Hillsborough County MPO Transit Study

Transit Concept for 2050

September 24, 2007

Alan Steinbeck, AICP



Transit Technologies



Technologies Considered

- Bus
- Light Rail
- Commuter Rail





- Standard or articulated high-capacity vehicles
- Special lanes or signal priority – Bus Rapid Transit
- Advantage of flexible service
- Congestion problem



- Locomotive pulling passenger cars
- Shares freight tracks
- Flexible capacity
- Peak hour service
- Long haul or suburb to city
- Needs to run flat and straight



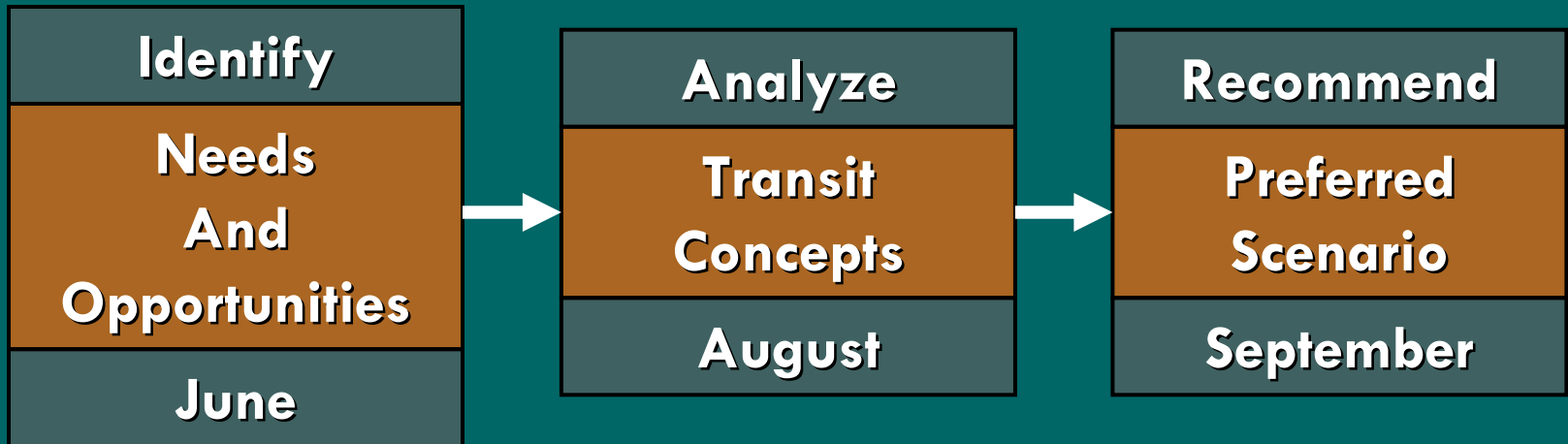


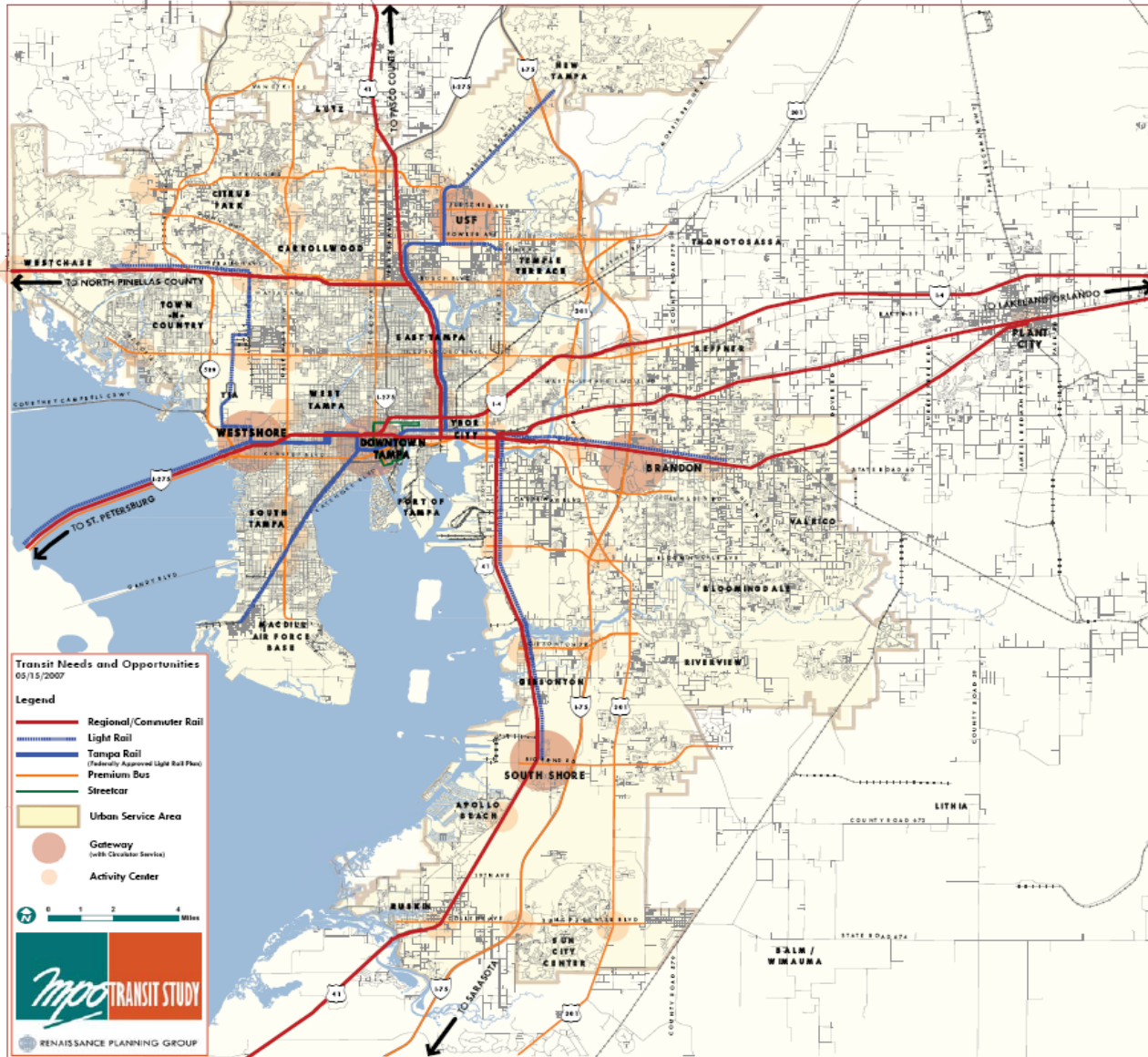
- Powered from above by electric wires
- Has its own tracks
- Frequent service
- All day service
- Suburb to city and urban area travel
- Quick acceleration
- Can climb and turn



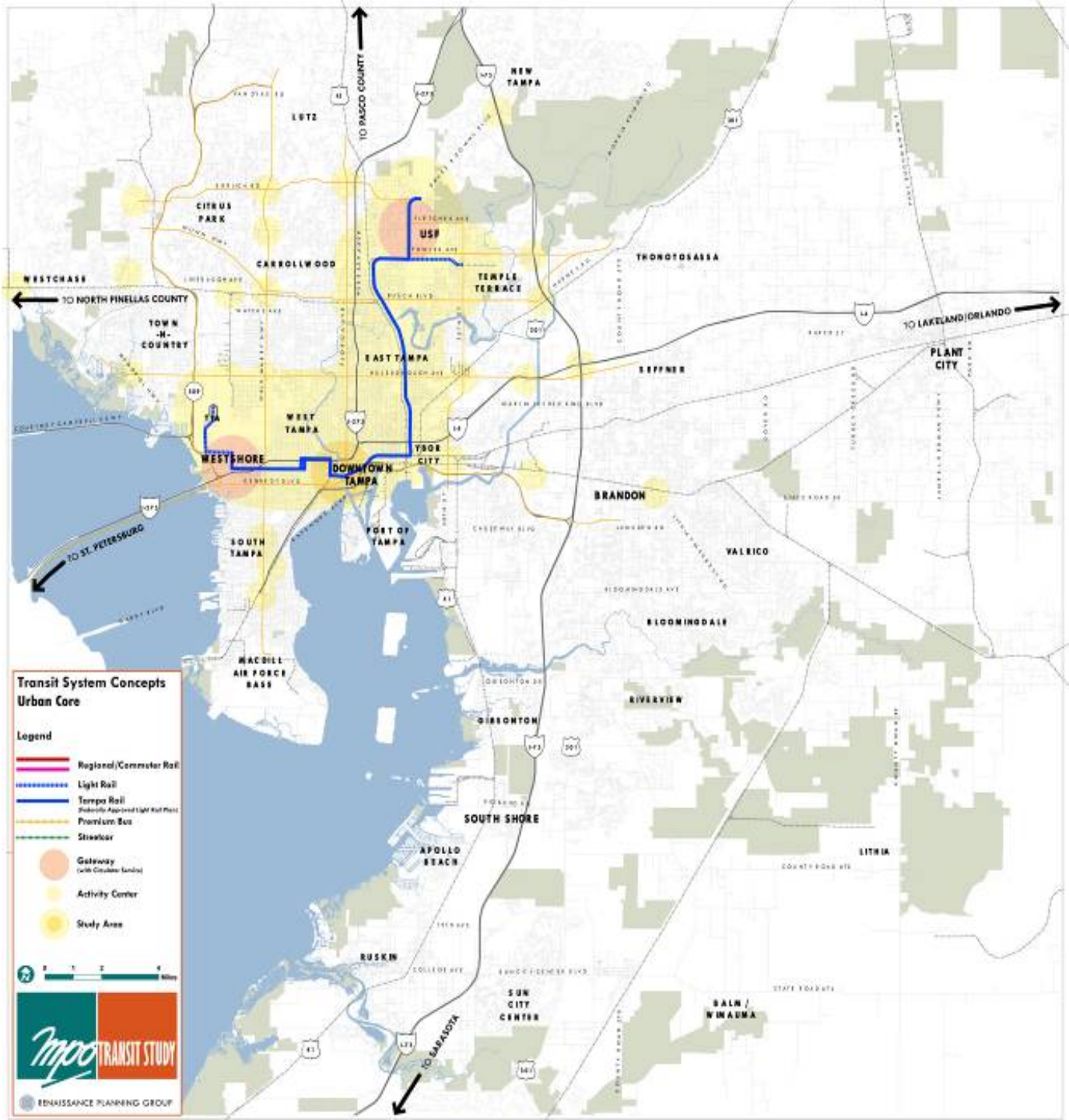
Study Summary



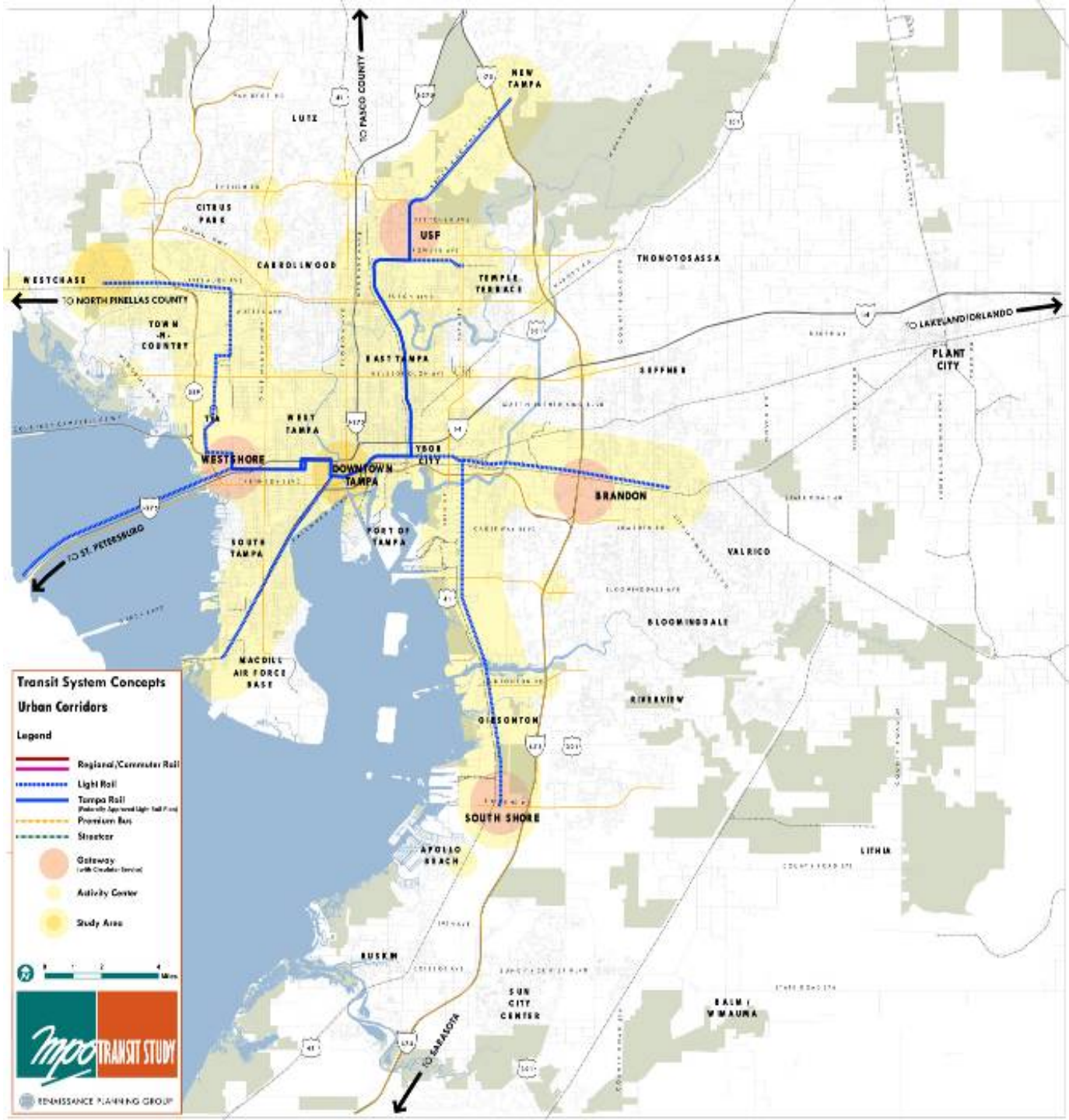




**Concept A:
Diagram**



**Concept B:
Diagram**



Transit System Concepts

Urban Corridors

Legend

-  Regional/Commuter Rail
-  Light Rail
-  Tampa Rail
-  Potentially Improved Light Rail/Tram
-  Front-Load Bus
-  Streetcar
-  Gateway (with On-Demand Service)
-  Activity Center
-  Study Area

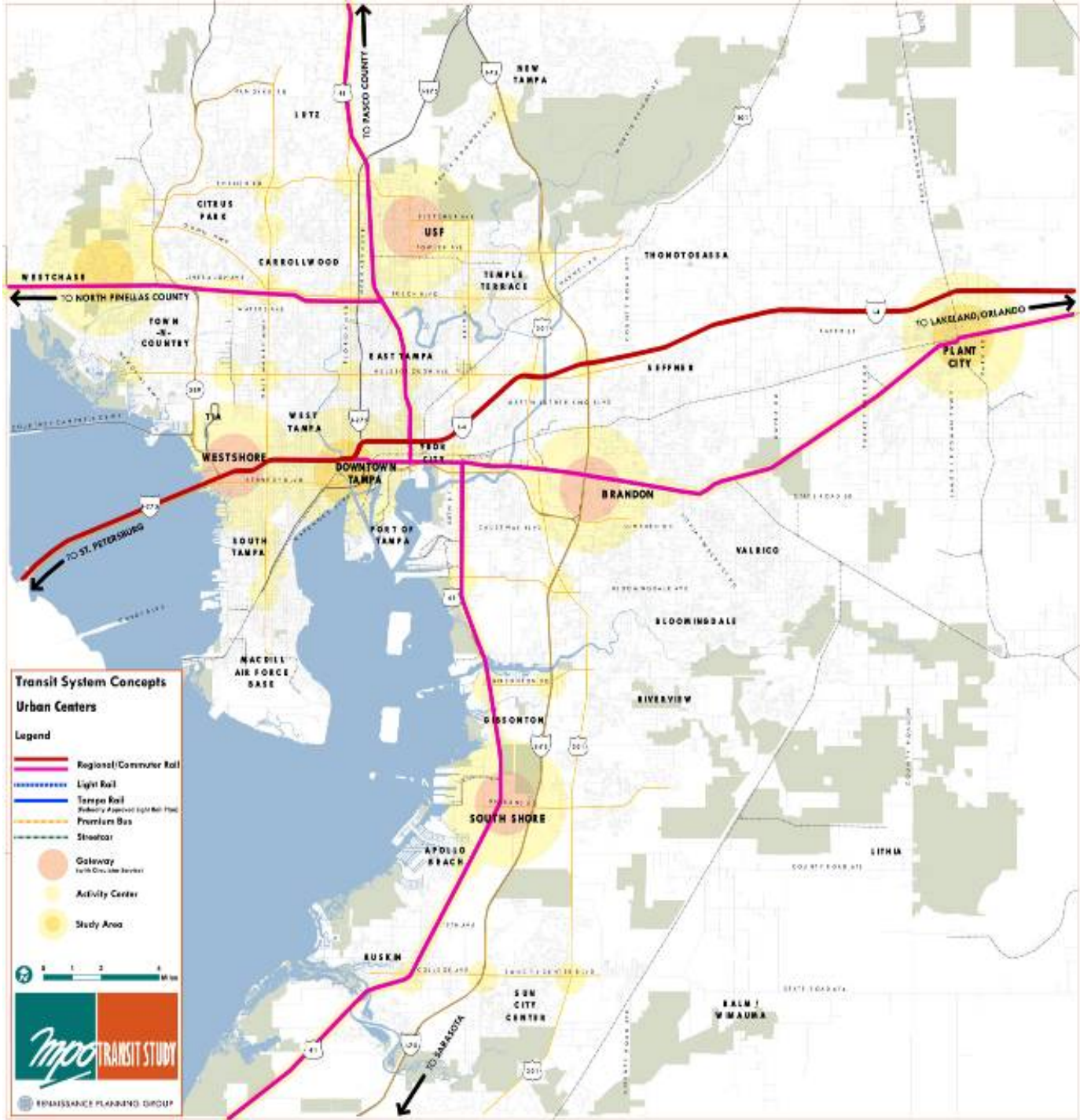


0 1 2 4 Miles

MPO TRANSIT STUDY

RENNISSANCE PLANNING GROUP

**Concept C:
Diagram**

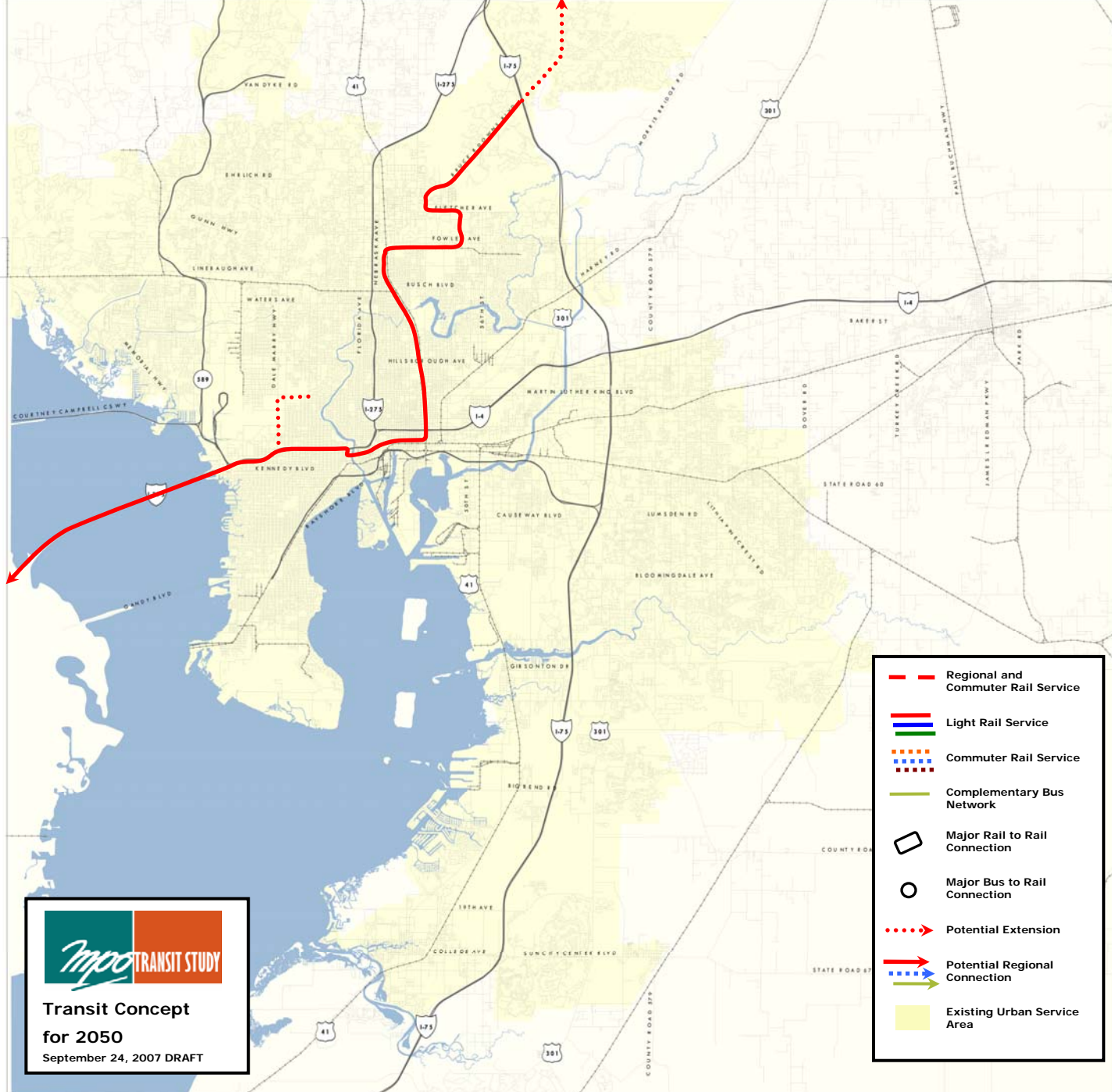













- Serving existing and emerging activity centers
- Serving growing and redeveloping areas
- Measuring the potential for station area development
- Respecting community character and land use policies
- Grounding ourselves in reality
 - Appropriate transit technology
 - Rights of way
 - Costs

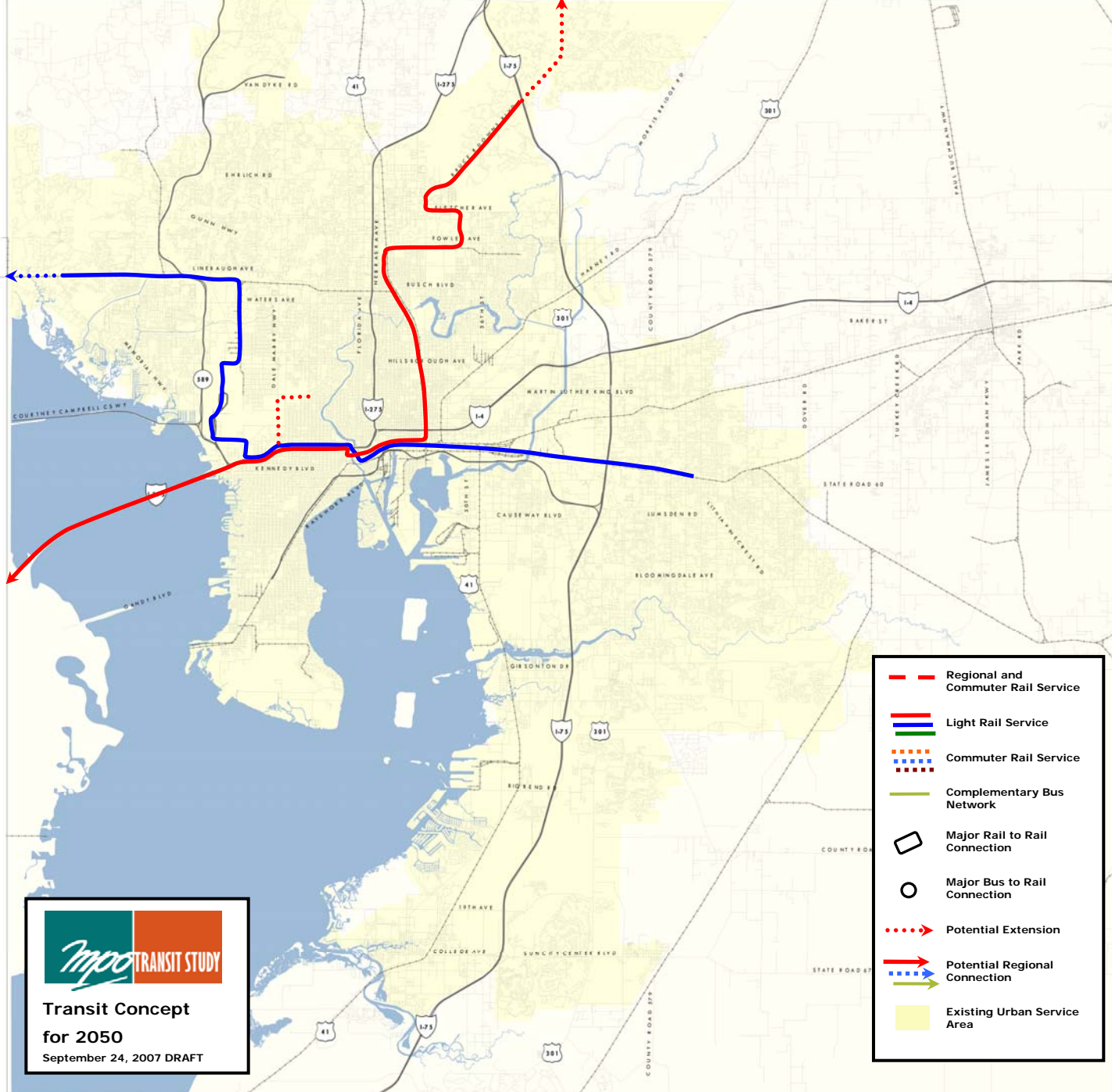
Transit Concept for 2050





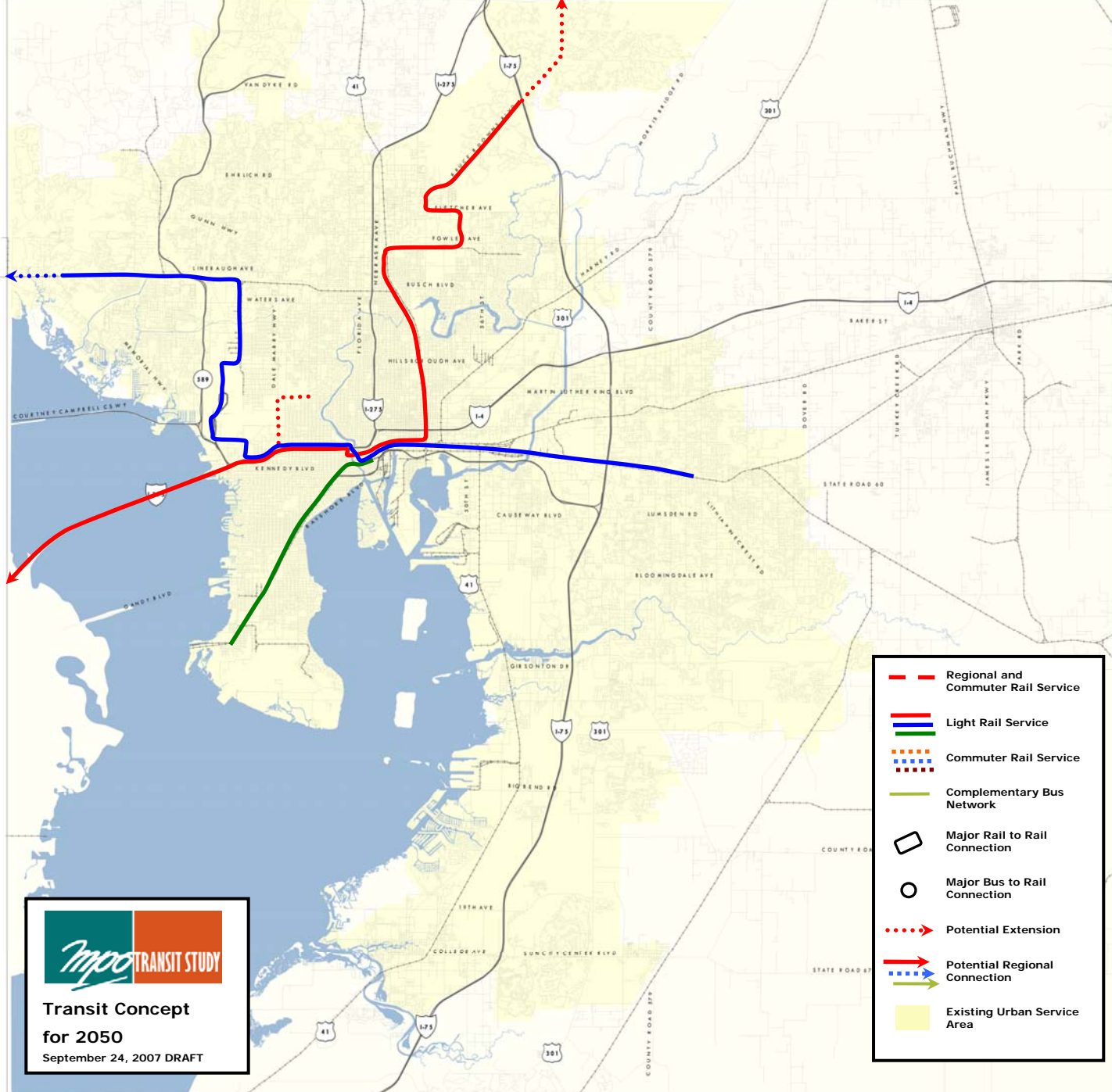
**Transit Concept
for 2050**
September 24, 2007 DRAFT

-  Regional and Commuter Rail Service
-  Light Rail Service
-  Commuter Rail Service
-  Complementary Bus Network
-  Major Rail to Rail Connection
-  Major Bus to Rail Connection
-  Potential Extension
-  Potential Regional Connection
-  Existing Urban Service Area



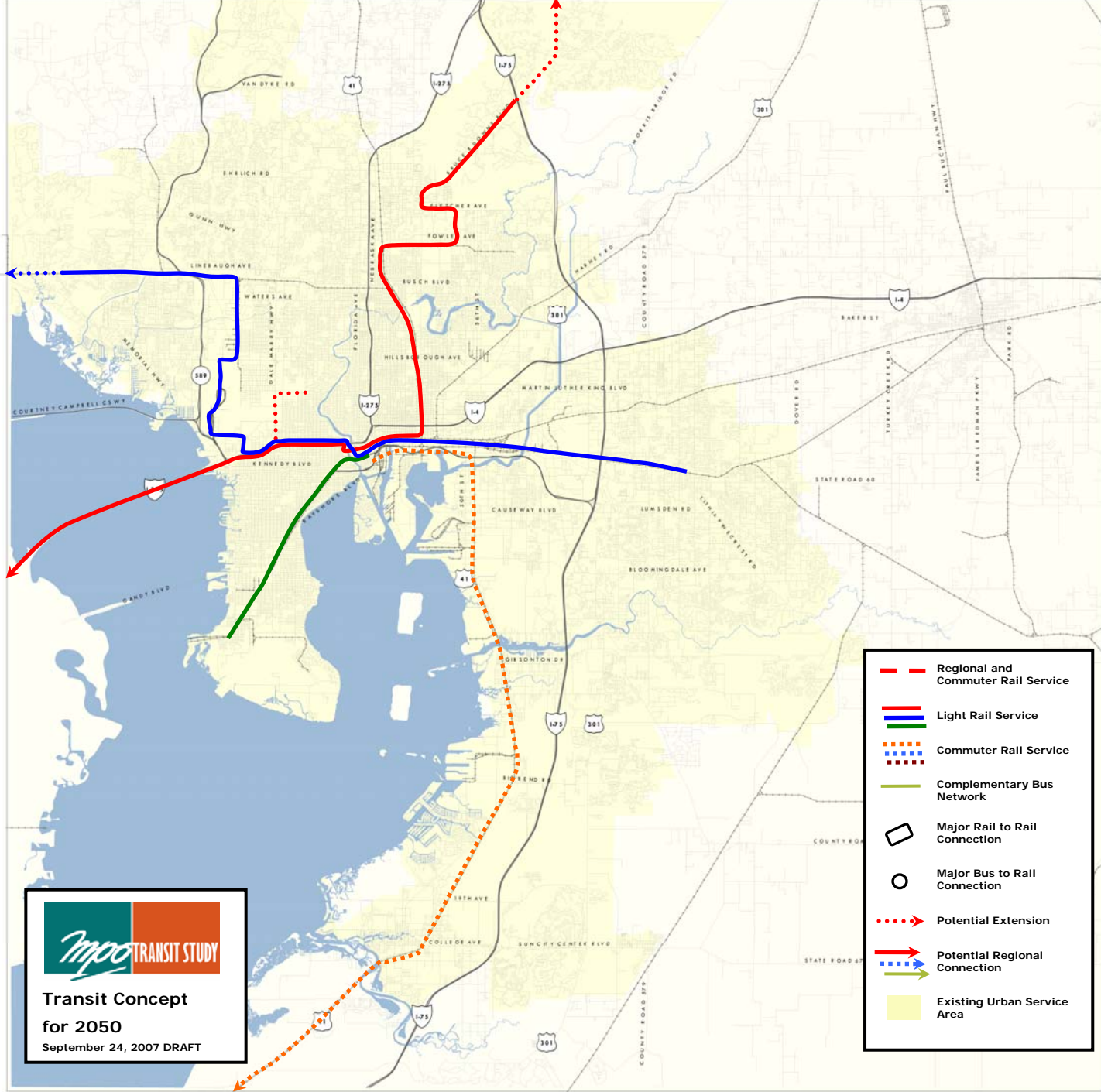
**Transit Concept
for 2050**
September 24, 2007 DRAFT

- Regional and Commuter Rail Service
- Light Rail Service
- Complementary Bus Network
- Potential Extension
- Potential Regional Connection
- Existing Urban Service Area



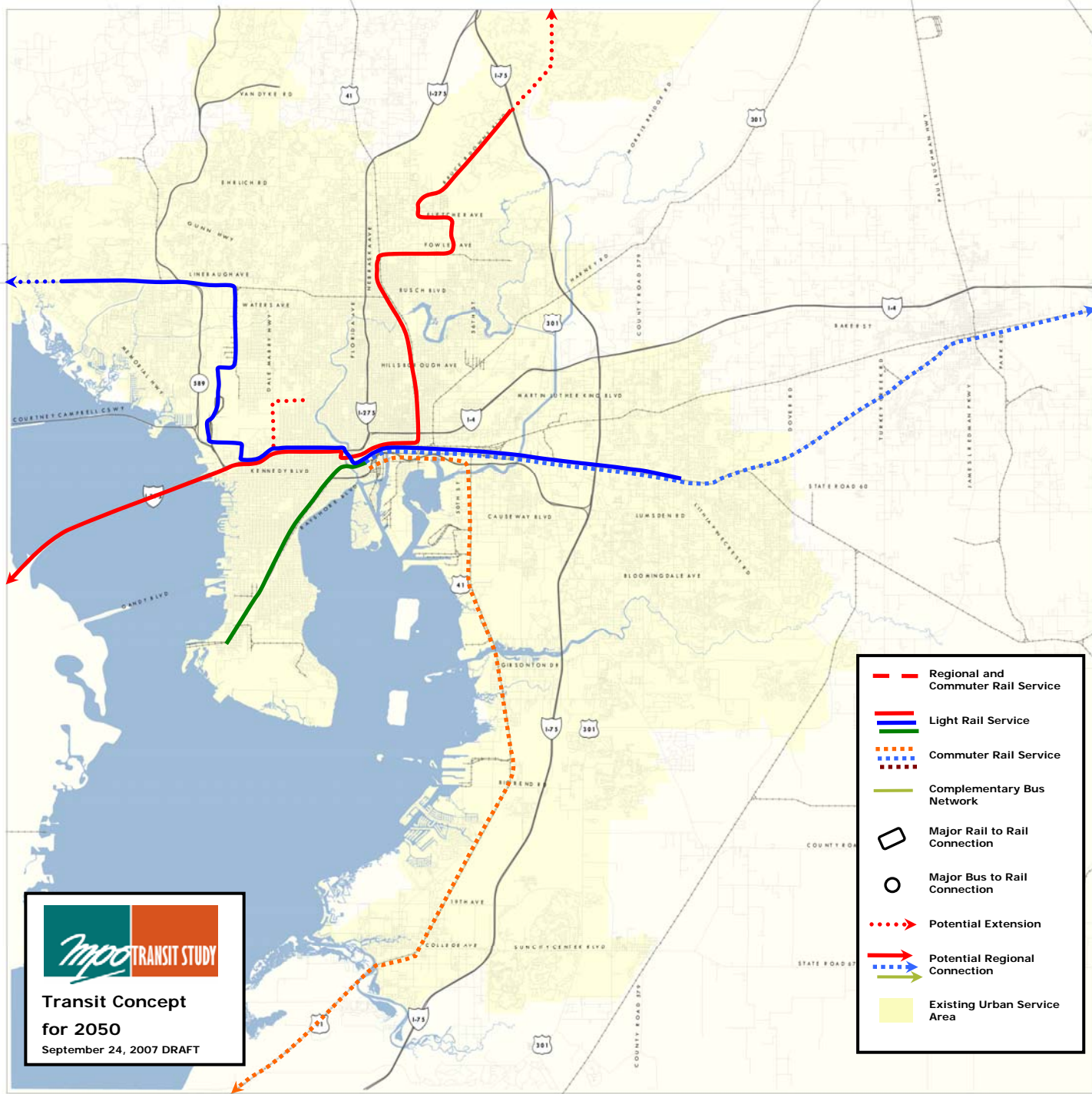
**Transit Concept
for 2050**
September 24, 2007 DRAFT

- Regional and Commuter Rail Service
- — Light Rail Service
- ⋯ ⋯ Commuter Rail Service
- Complementary Bus Network
- Major Rail to Rail Connection
- Major Bus to Rail Connection
- ⋯ Potential Extension
- → → Potential Regional Connection
- Existing Urban Service Area





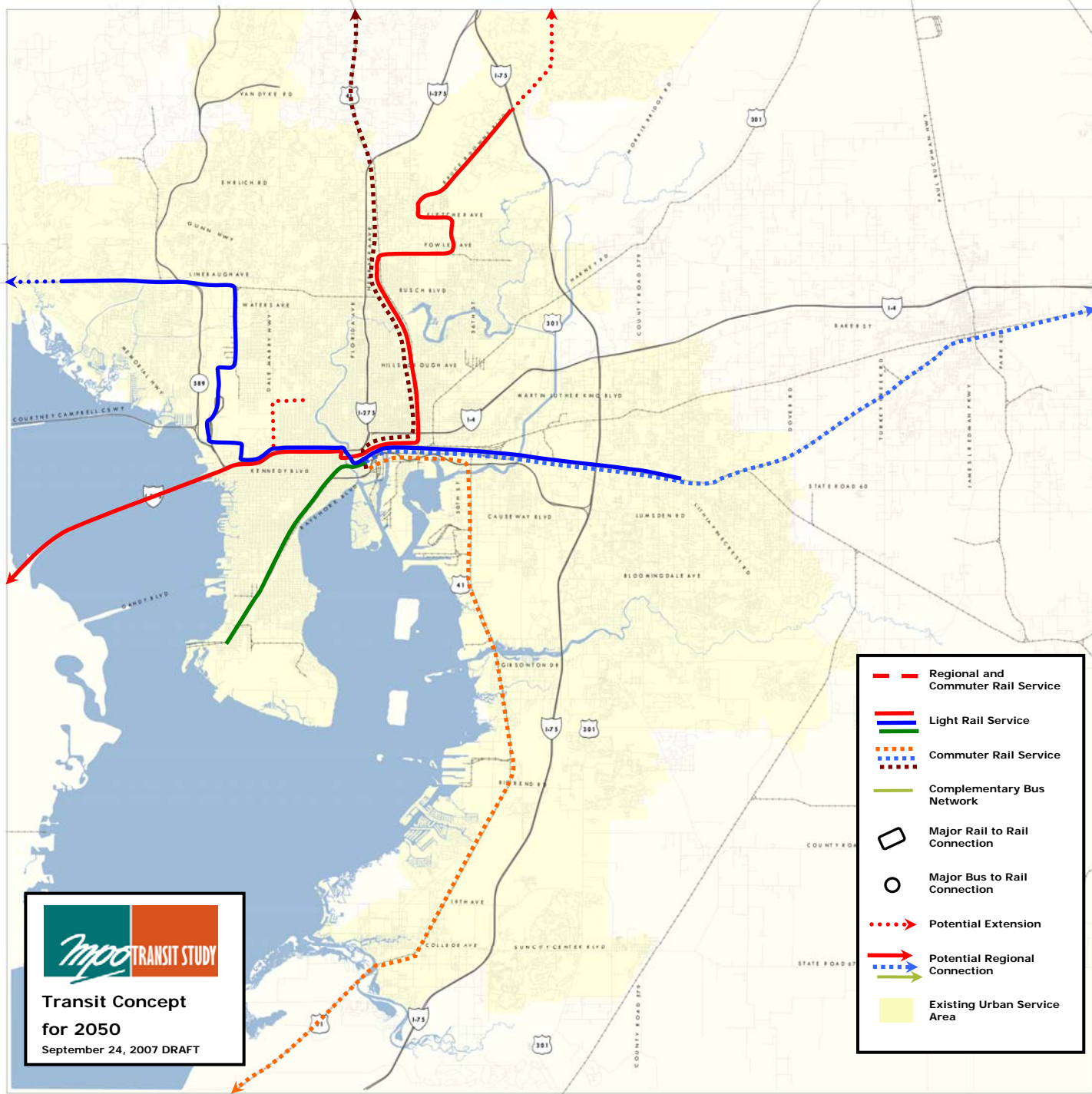
**Transit Concept
for 2050**
September 24, 2007 DRAFT

- Regional and Commuter Rail Service
- — Light Rail Service
- - - Commuter Rail Service
- Complementary Bus Network
- Major Rail to Rail Connection
- Major Bus to Rail Connection
- - - Potential Extension
- Potential Regional Connection
- - - Potential Regional Connection
- Existing Urban Service Area



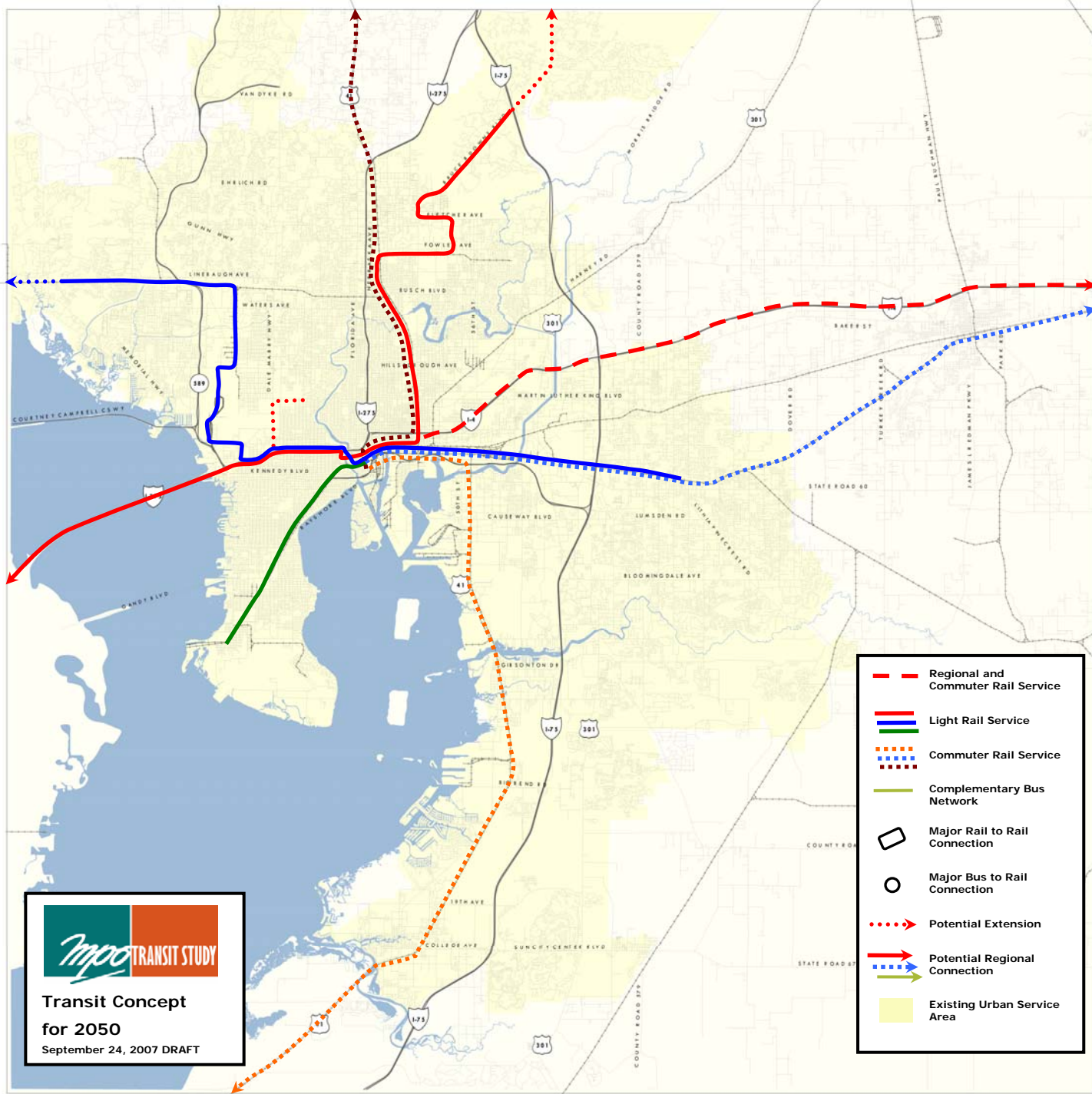

Transit Concept
for 2050
 September 24, 2007 DRAFT

- Regional and Commuter Rail Service
- Light Rail Service
- Light Rail Service
- ⋯ Commuter Rail Service
- Complementary Bus Network
-  Major Rail to Rail Connection
-  Major Bus to Rail Connection
- ⋯→ Potential Extension
- Potential Regional Connection
- Potential Regional Connection
- Potential Regional Connection
- Existing Urban Service Area





**Transit Concept
for 2050**
September 24, 2007 DRAFT

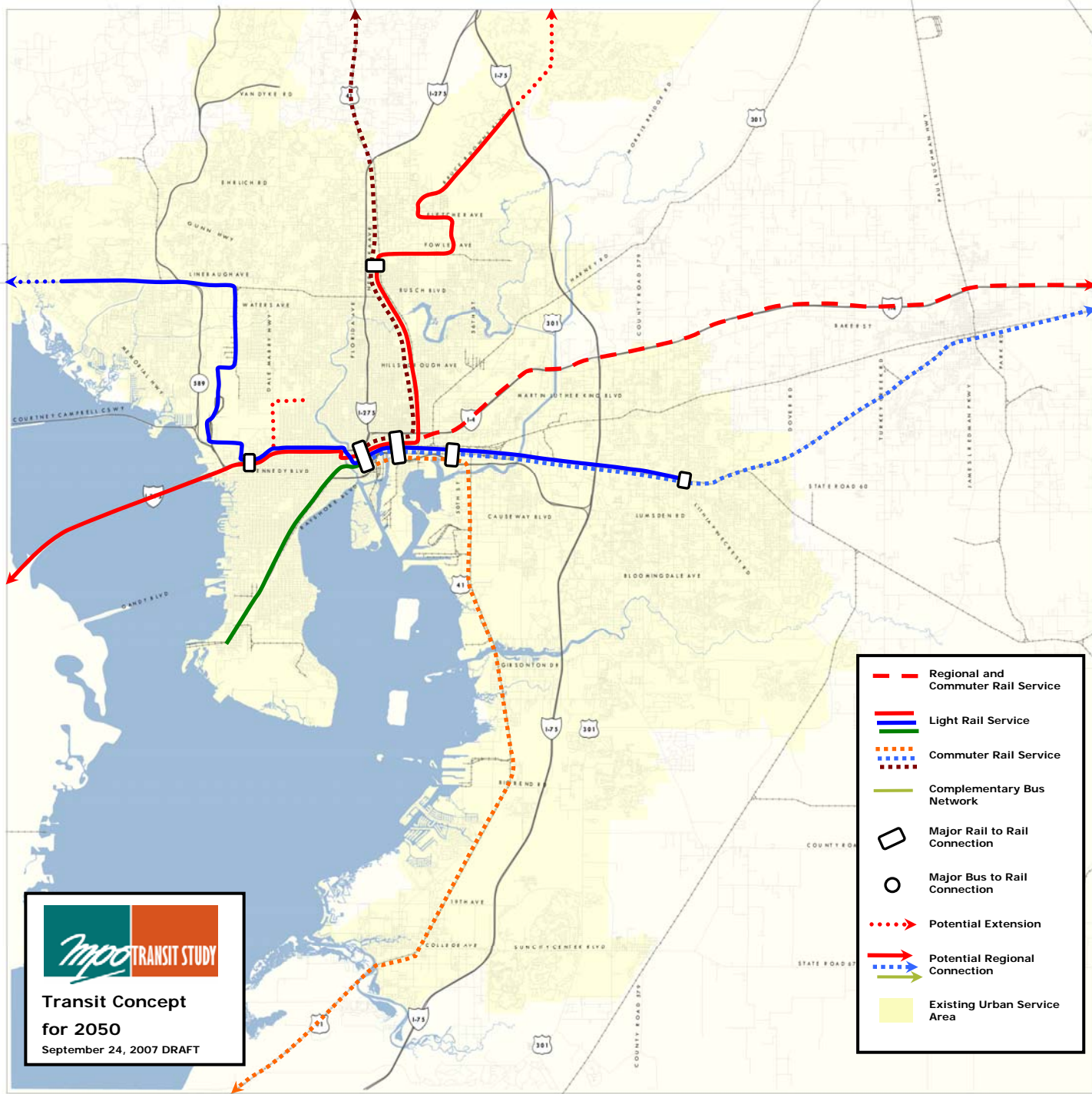
- Regional and Commuter Rail Service
- Light Rail Service
- Light Rail Service
- - - Commuter Rail Service
- Complementary Bus Network
- Major Rail to Rail Connection
- Major Bus to Rail Connection
- - - Potential Extension
- Potential Regional Connection
- - - Potential Regional Connection
- Potential Regional Connection
- Existing Urban Service Area







Transit Concept
for 2050
 September 24, 2007 DRAFT

- Regional and Commuter Rail Service
- Light Rail Service
- Light Rail Service
- ⋯ Commuter Rail Service
- ⋯ Commuter Rail Service
- Complementary Bus Network
-  Major Rail to Rail Connection
-  Major Bus to Rail Connection
- ⋯ Potential Extension
- Potential Regional Connection
- Potential Regional Connection
- Potential Regional Connection
- Existing Urban Service Area

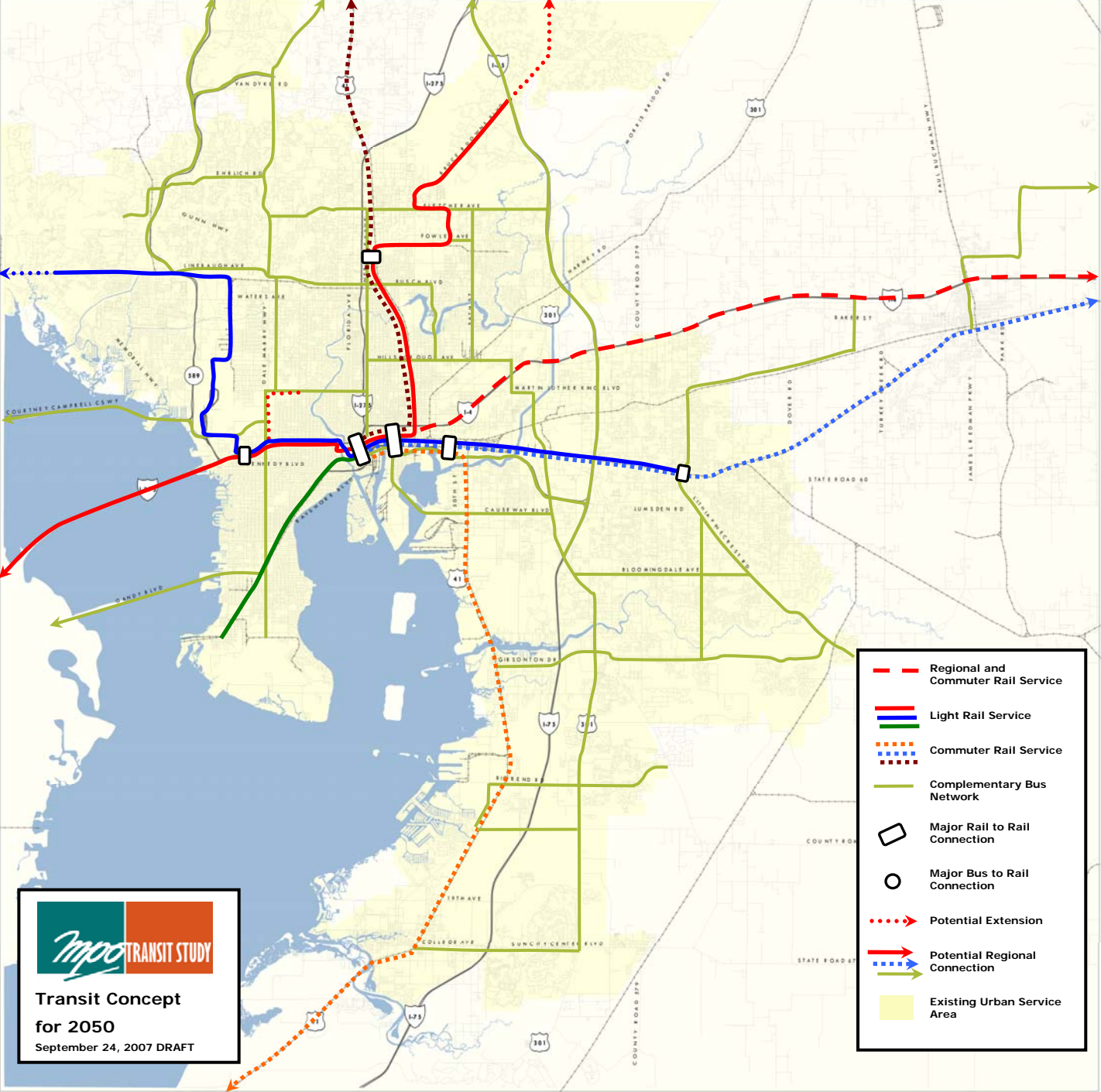













Transit Concept
for 2050
 September 24, 2007 DRAFT

- Regional and Commuter Rail Service
- Light Rail Service
- Light Rail Service
- - - Commuter Rail Service
- Complementary Bus Network
-  Major Rail to Rail Connection
-  Major Bus to Rail Connection
- - - Potential Extension
- Potential Regional Connection
- Potential Regional Connection
- Potential Regional Connection
- Existing Urban Service Area



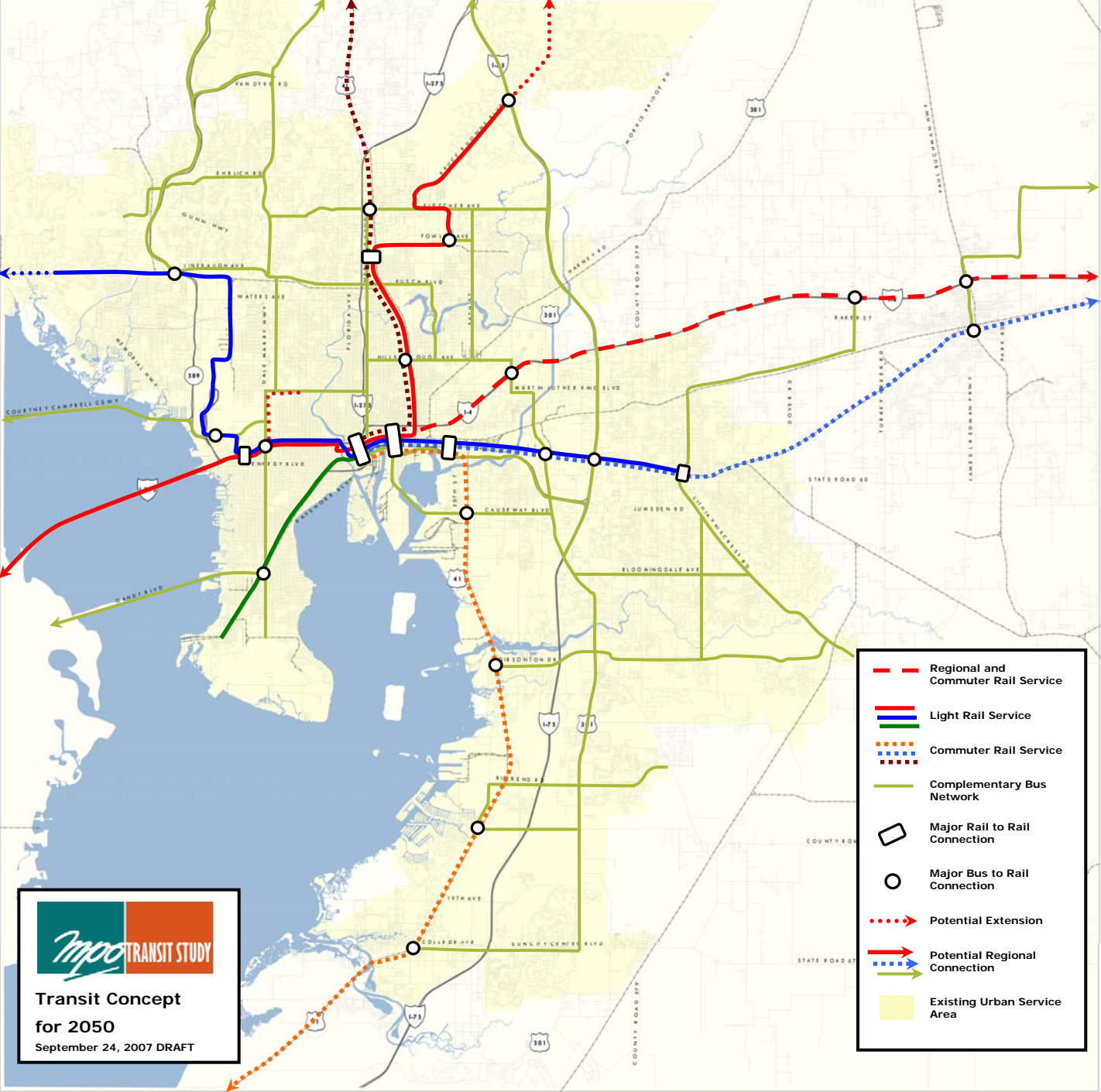
**Transit Concept
for 2050**
September 24, 2007 DRAFT












-  Regional and Commuter Rail Service
-  Light Rail Service
-  Complementary Bus Network
-  Major Rail to Rail Connection
-  Major Bus to Rail Connection
-  Potential Extension
-  Potential Regional Connection
-  Potential Light Rail Connection
-  Potential Bus Network Connection
-  Existing Urban Service Area



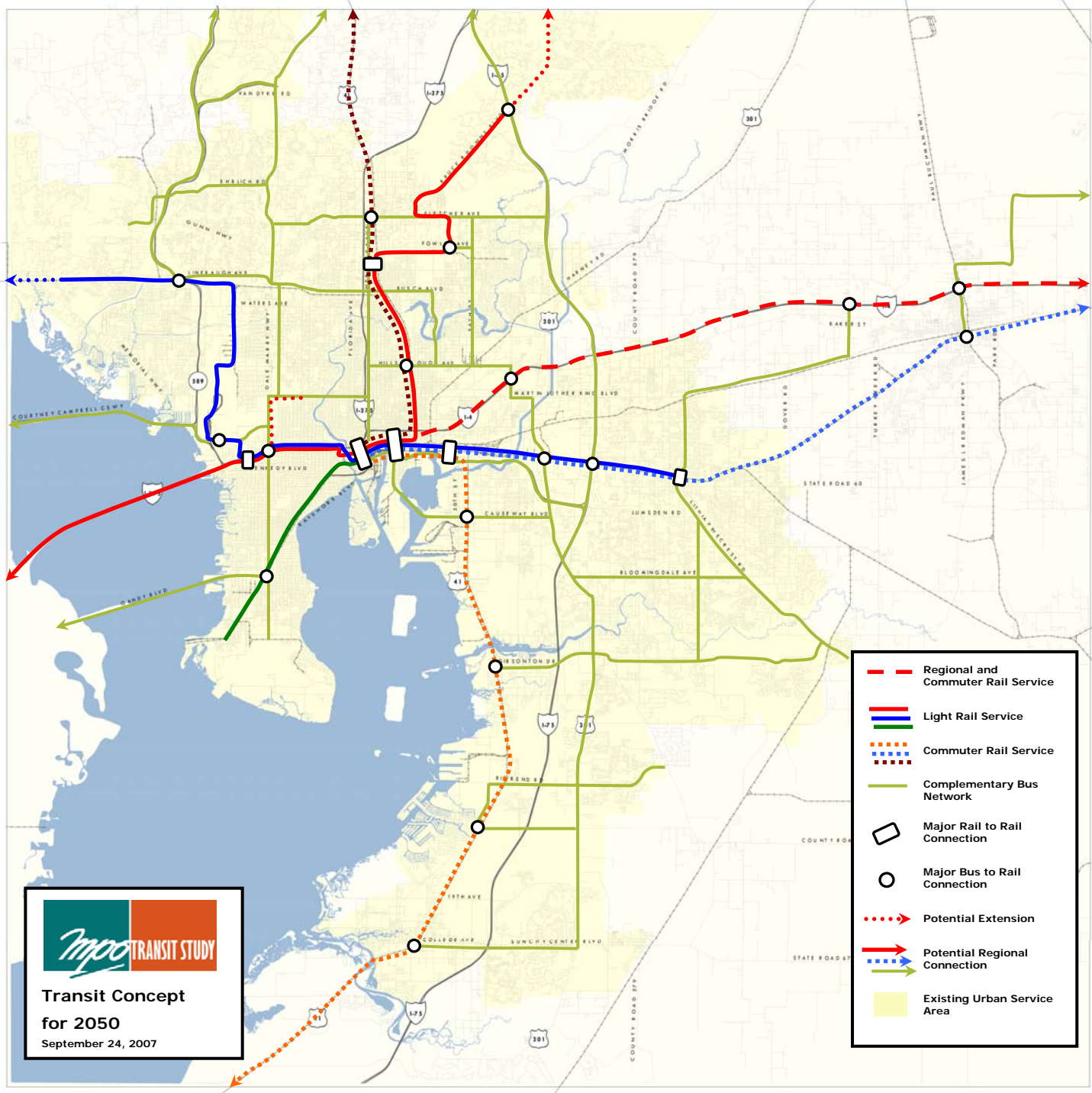
**Transit Concept
for 2050**
September 24, 2007 DRAFT









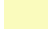


-  Regional and Commuter Rail Service
-  Light Rail Service
-  Commuter Rail Service
-  Complementary Bus Network
-  Major Rail to Rail Connection
-  Major Bus to Rail Connection
-  Potential Extension
-  Potential Regional Connection
-  Existing Urban Service Area



- **MPO for information in October**
- **MPO for action in November**
- **Incorporate into the LRTP update**
- **Parallel the TBARTA planning process**



-  Regional and Commuter Rail Service
-  Light Rail Service
-  Commuter Rail Service
-  Complementary Bus Network
-  Major Rail to Rail Connection
-  Major Bus to Rail Connection
-  Potential Extension
-  Potential Regional Connection
-  Existing Urban Service Area