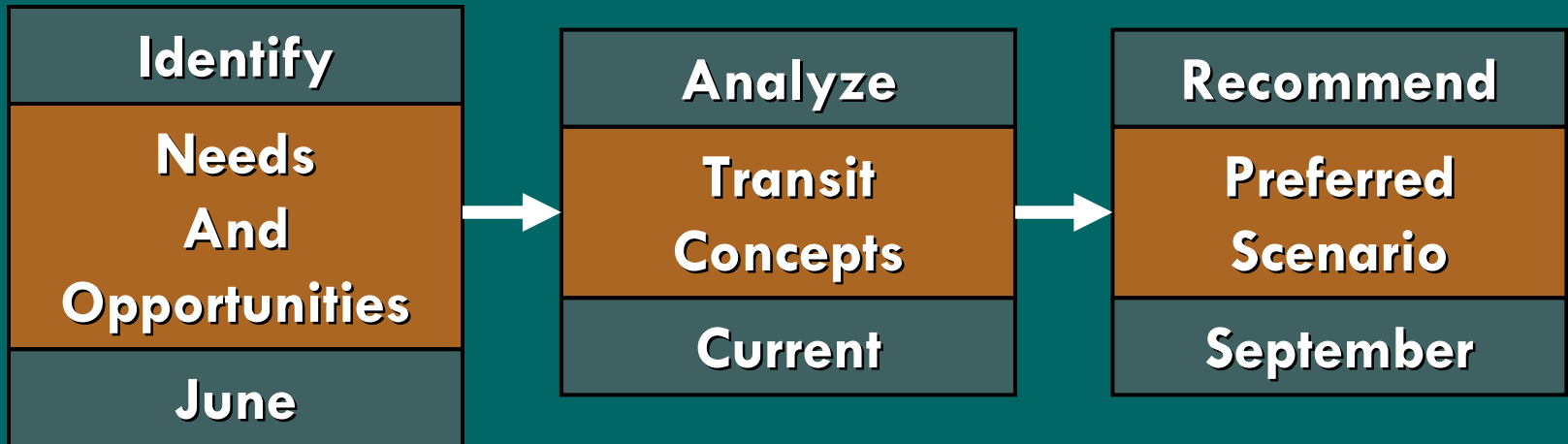


Hillsborough County MPO Transit Study

MPO

September 4, 2007





- Bus
- Light Rail
- Commuter Rail
- Regional Rail



TRANSIT TECHNOLOGY REVIEW MPO TRANSIT STUDY

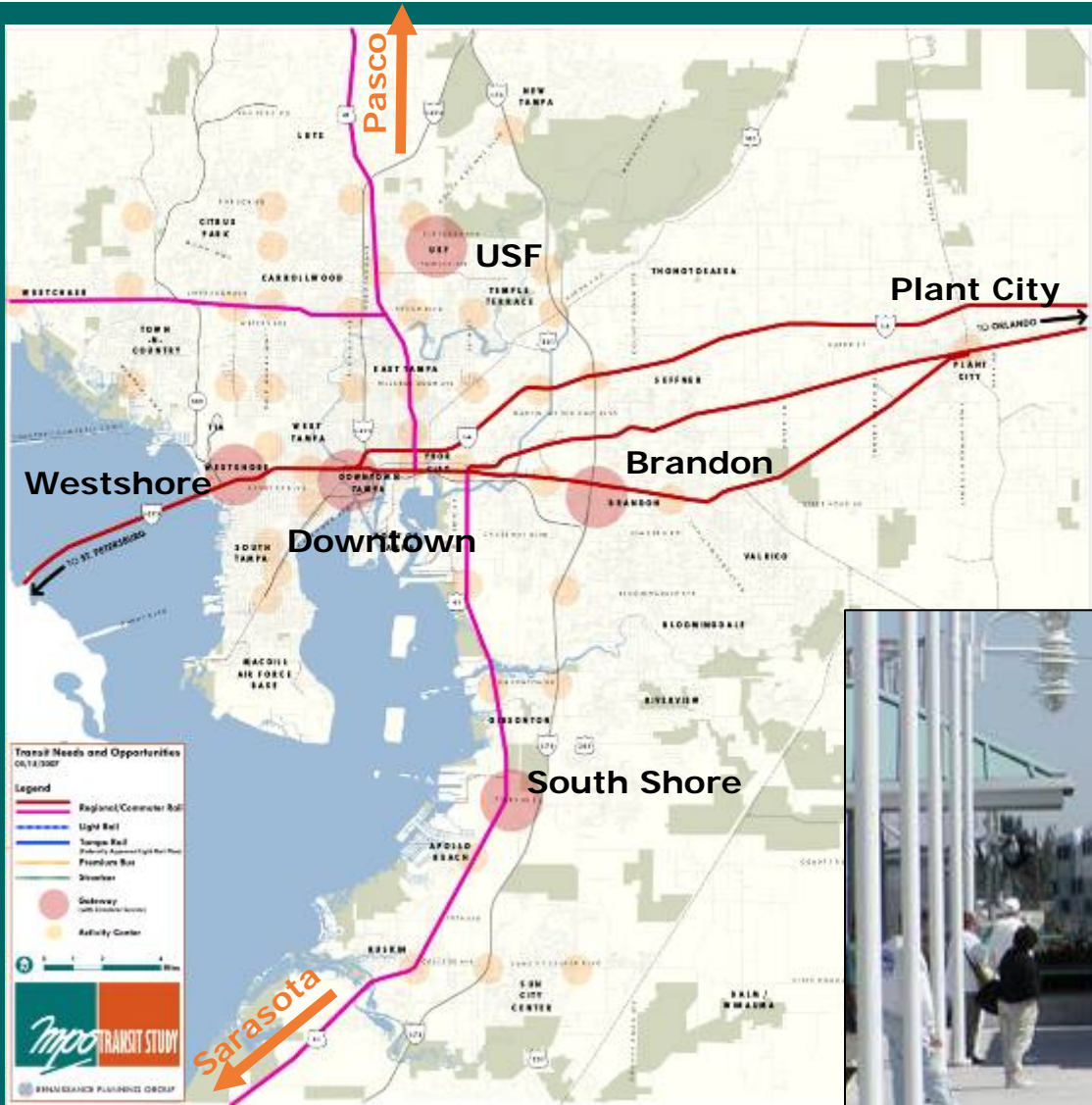


TECHNICAL MEMORANDUM
JUNE 6, 2007



TRANSIT STUDY

Commuter and Regional Rail Opportunities



Lakeland & Orlando

- Existing CSX or New Track
- Peak Travel
- Park & Ride Lots

North Pinellas

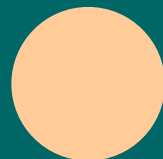
St Petersburg



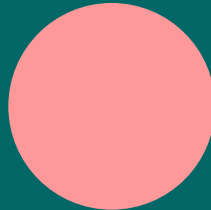
Light Rail Opportunities



- New Track or Existing Track
- Continuous Service
- Links Major Centers



Activity Center



Gateway

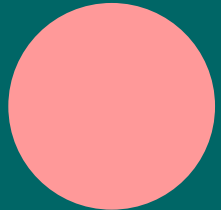
Bus Opportunities



- **BRT - Dedicated Lane or Traffic Priority**
- **Express Service**



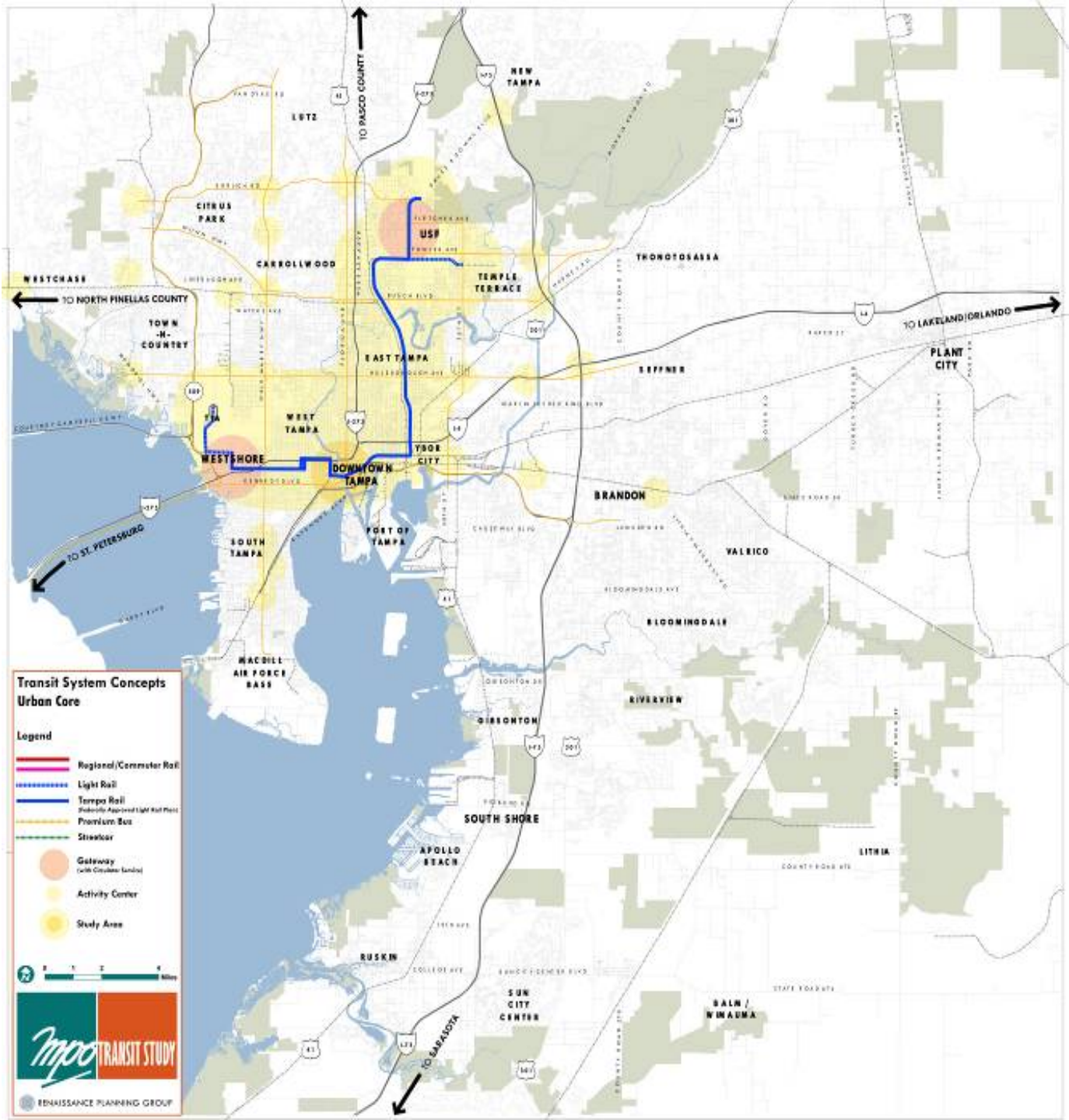
Activity Center



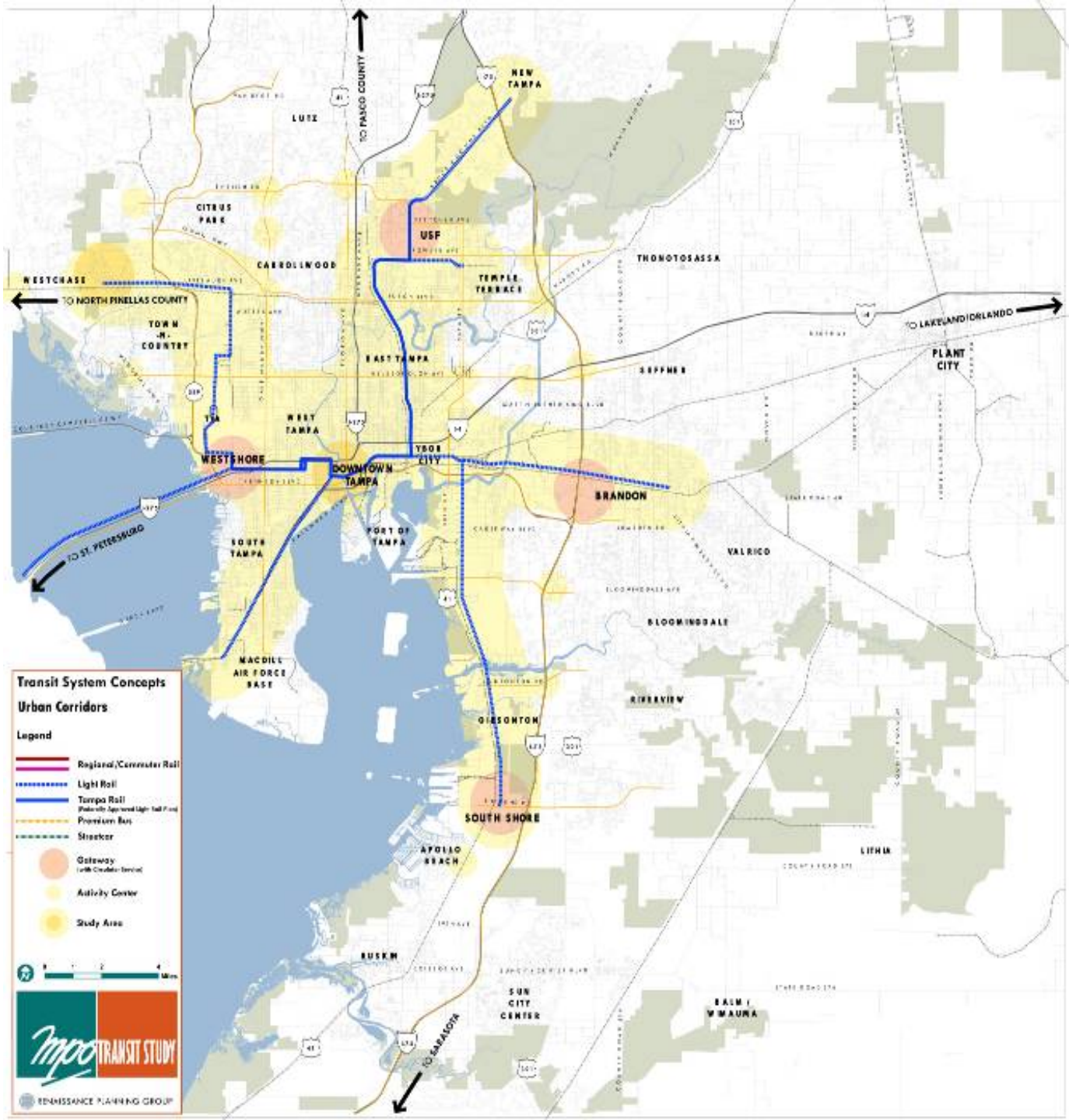
Gateway



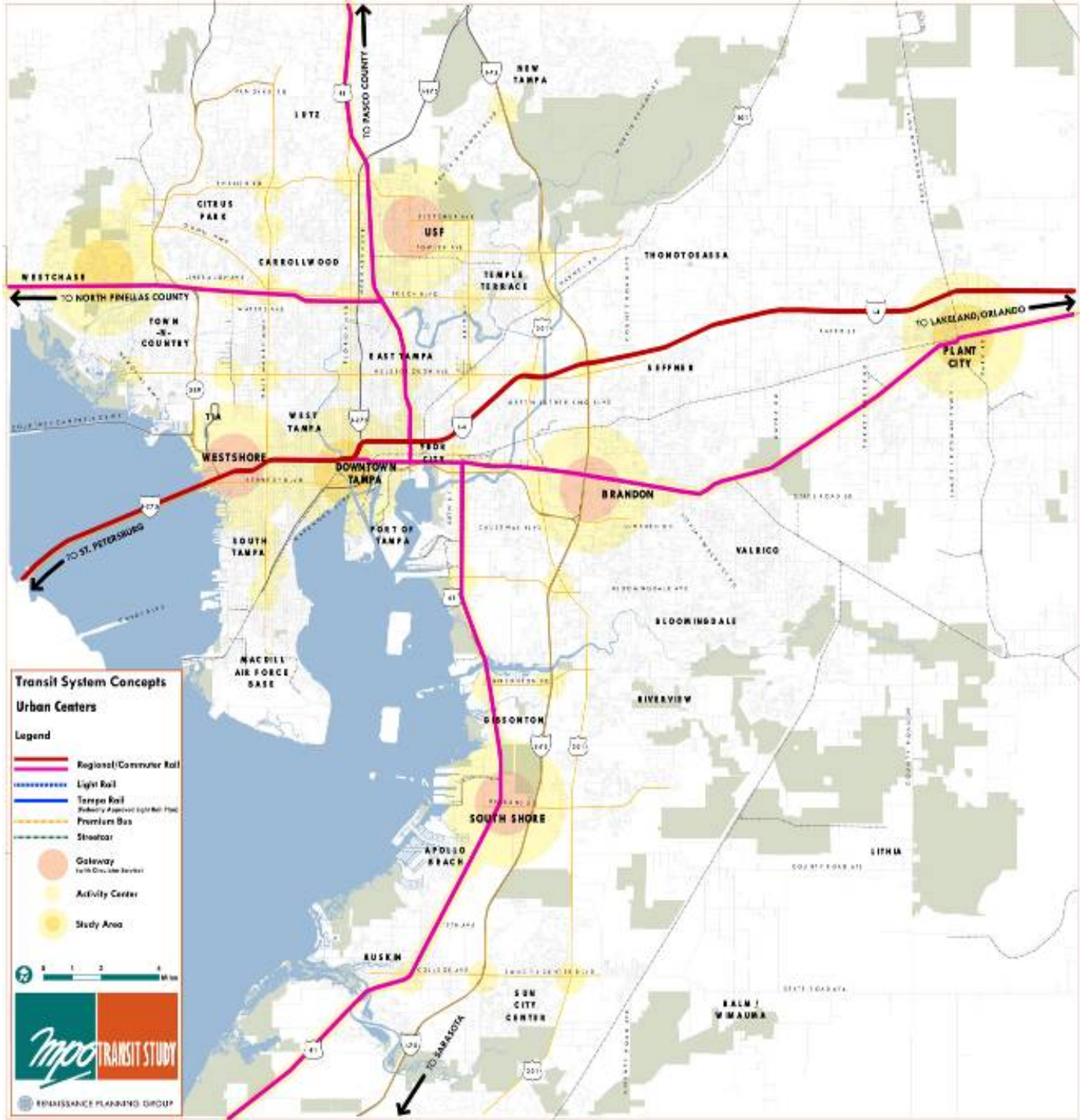
**Concept A:
Diagram**



**Concept B:
Diagram**



**Concept C:
Diagram**



- Transit Concepts
 - Quality of Life
 - Mobility
 - Economic Vitality
 - Survey

Transit Future Concepts

with you in mind

Preliminary transit concepts take the long view to 2050

This issue of Transit Center focuses on transportation choices that will influence the shape and quality of Hillsborough County communities. Building upon public input provided during a series of MPO Transit Study workshops, three Transit Future Concepts were developed. Each concept envisions transit connections between our key activity centers and provides sustainable ways to accommodate new residents and jobs. From these concepts, a single, comprehensive Transit Future will emerge.

To learn more about previous MPO Transit Study efforts, visit our web site www.mpotransit.org.



Growth and Our Future

Population growth projections for the county and the region are fueling a community conversation about how Hillsborough County should grow. In 2050, the number of new county residents will roughly match the population of Atlanta, Houston or Dallas. These projections raise important questions about how to accommodate this growth while maintaining the viability and livability of our cities, neighborhoods and rural areas.

Adding to the conversation is how to accommodate the escalating regional trips to and from Hillsborough County's major employment centers. By 2050, the Tampa Bay region's population will increase by approximately three million residents to over seven million.

There's no question that growth within and outside Hillsborough County will place additional demands on our infrastructure, but are there smarter ways to move people and support growth in our communities?



Lifestyles & Perspectives.....pg 2



Community Voices.....pg 3



Where We Are Growing.....pg 4



Transit Futures.....pg 5-7



Transit Benefits All of Us.....pg 8-9



Future That You See.....pg 11-12

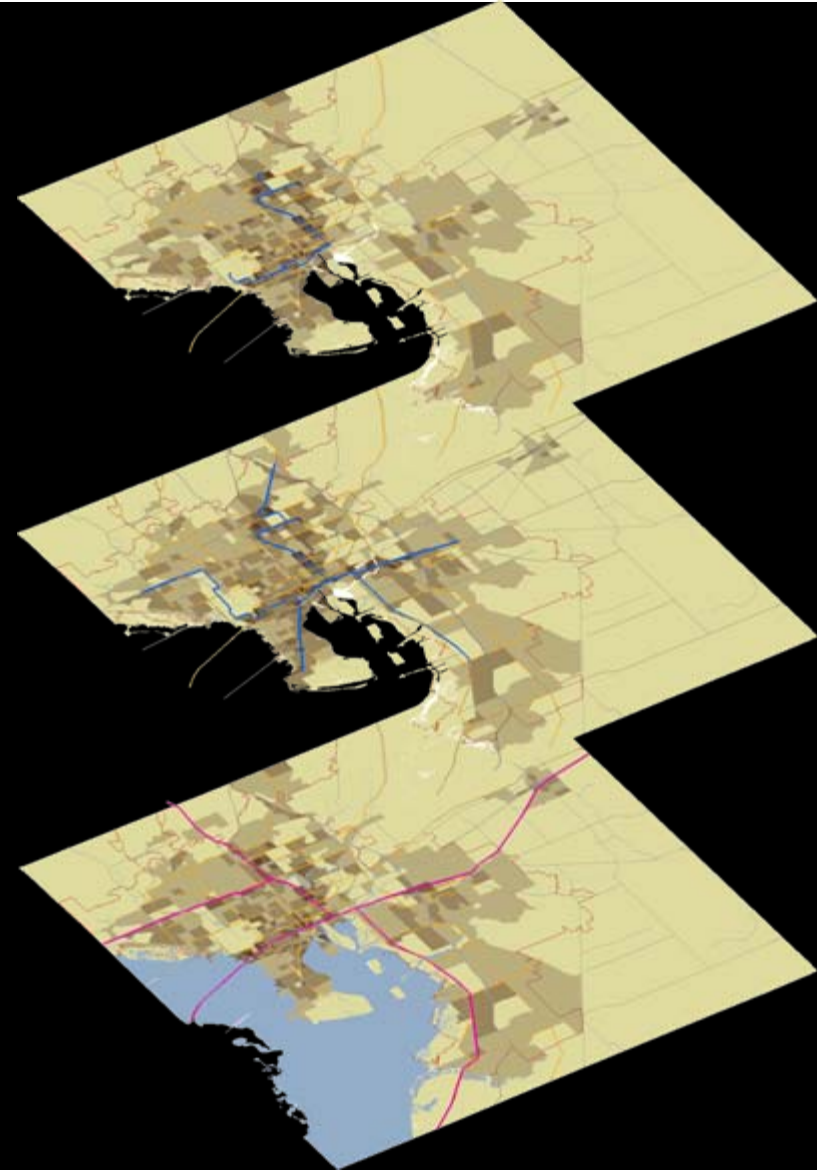
TRANSIT CENTER



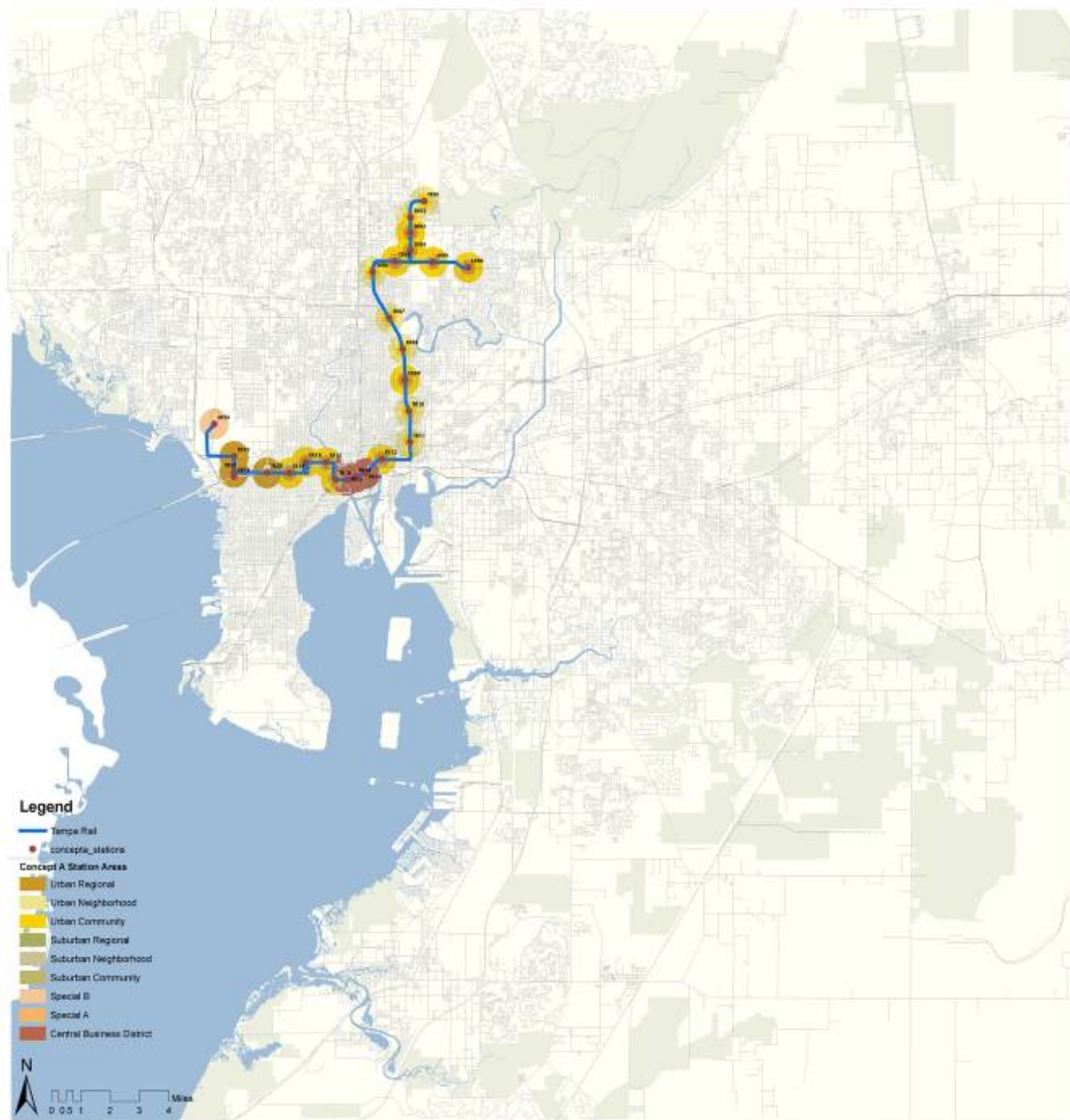
TRANSIT STUDY

What's in our future?

How many people
will be able to live
and work within close
proximity to transit in
2050?



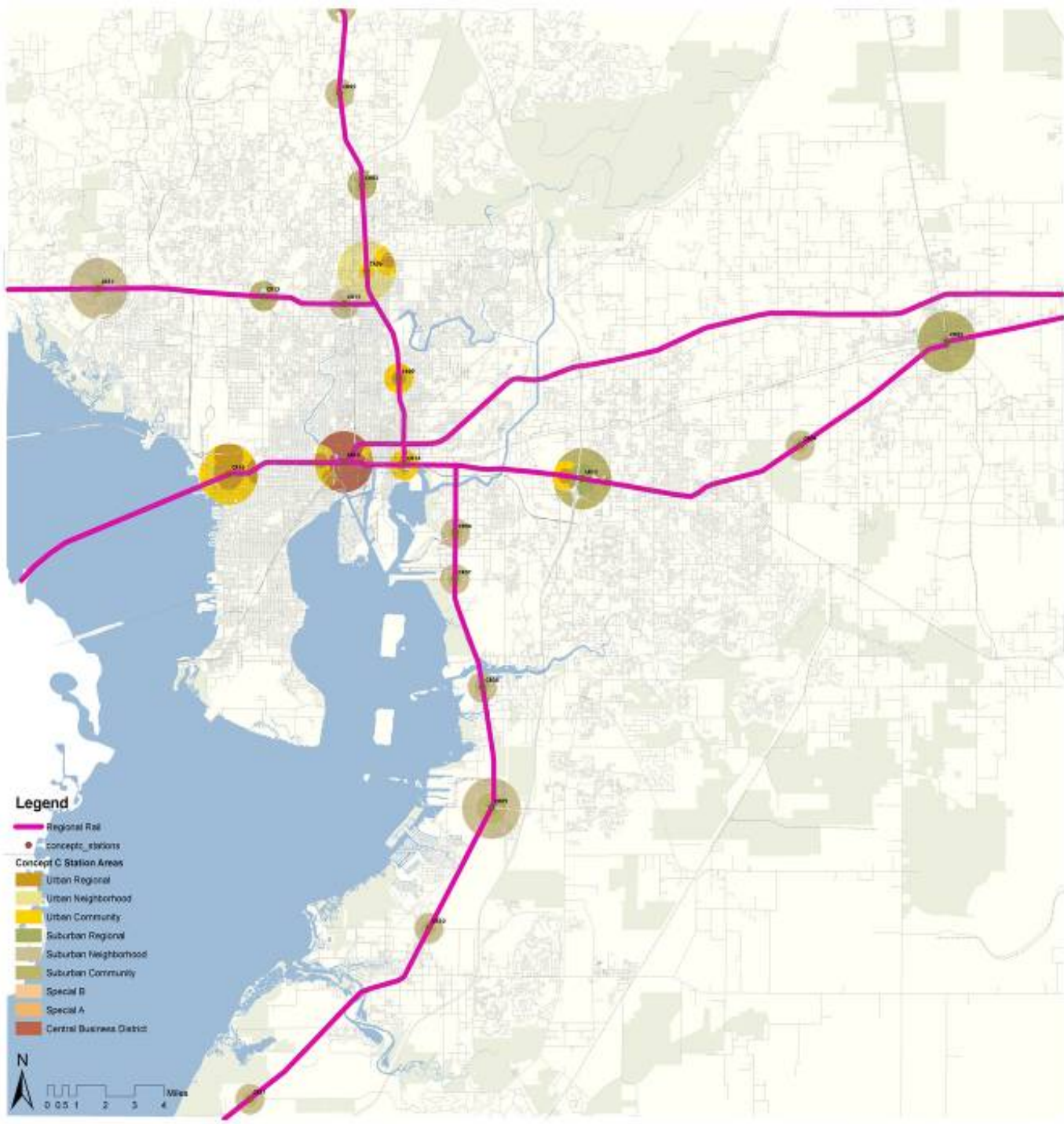
**Concept A:
Stations**



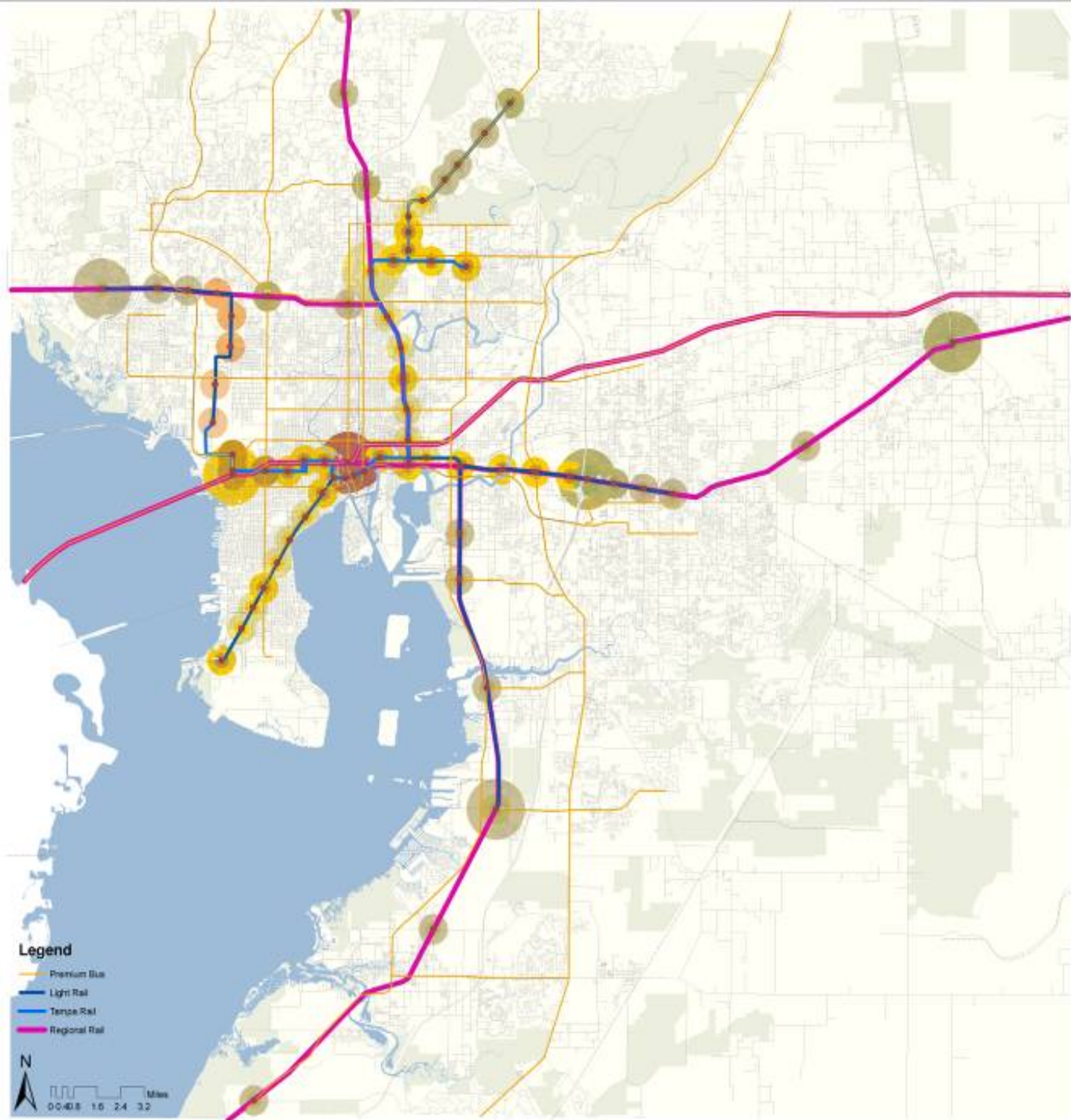
**Concept B:
Stations**

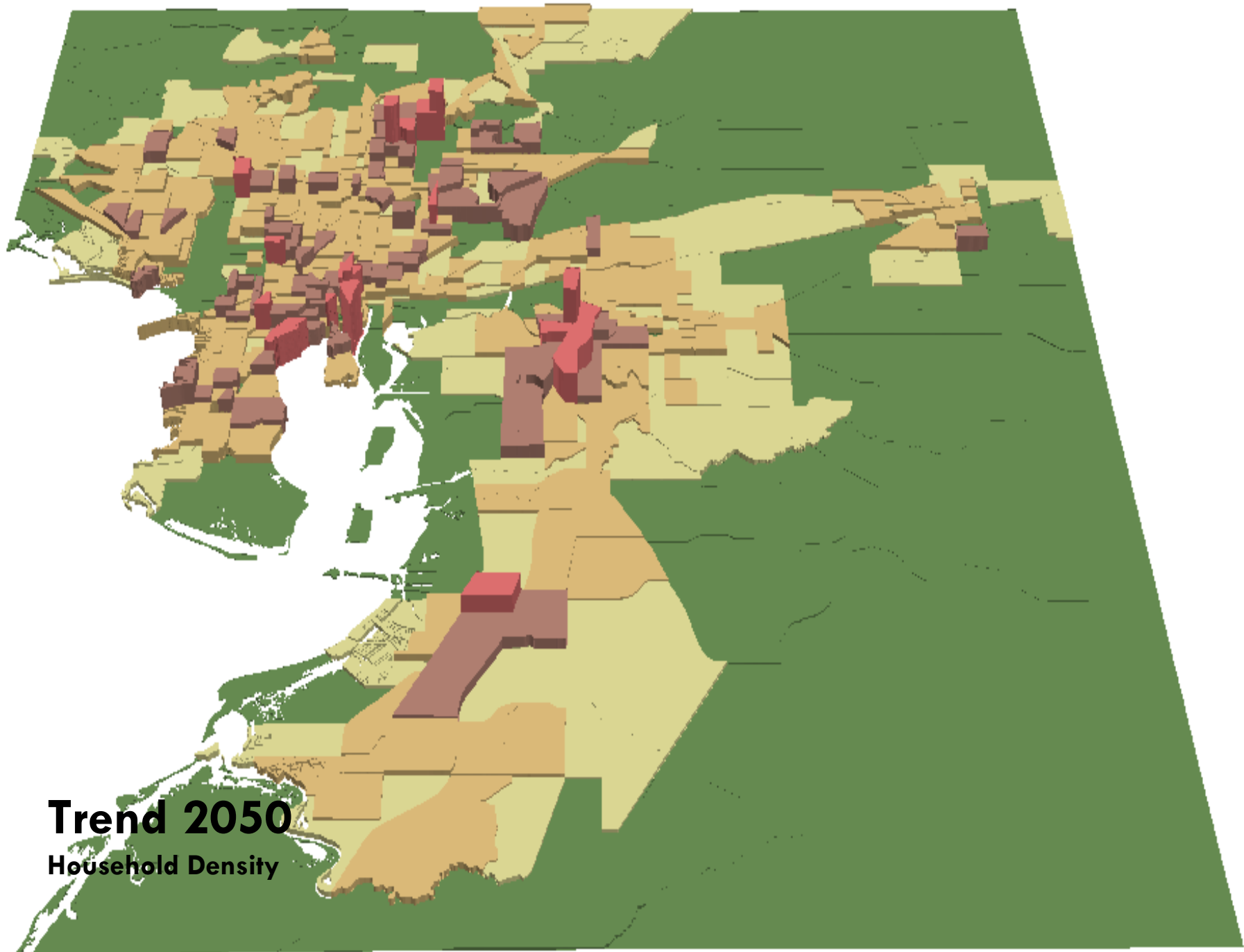


**Concept C:
Stations**

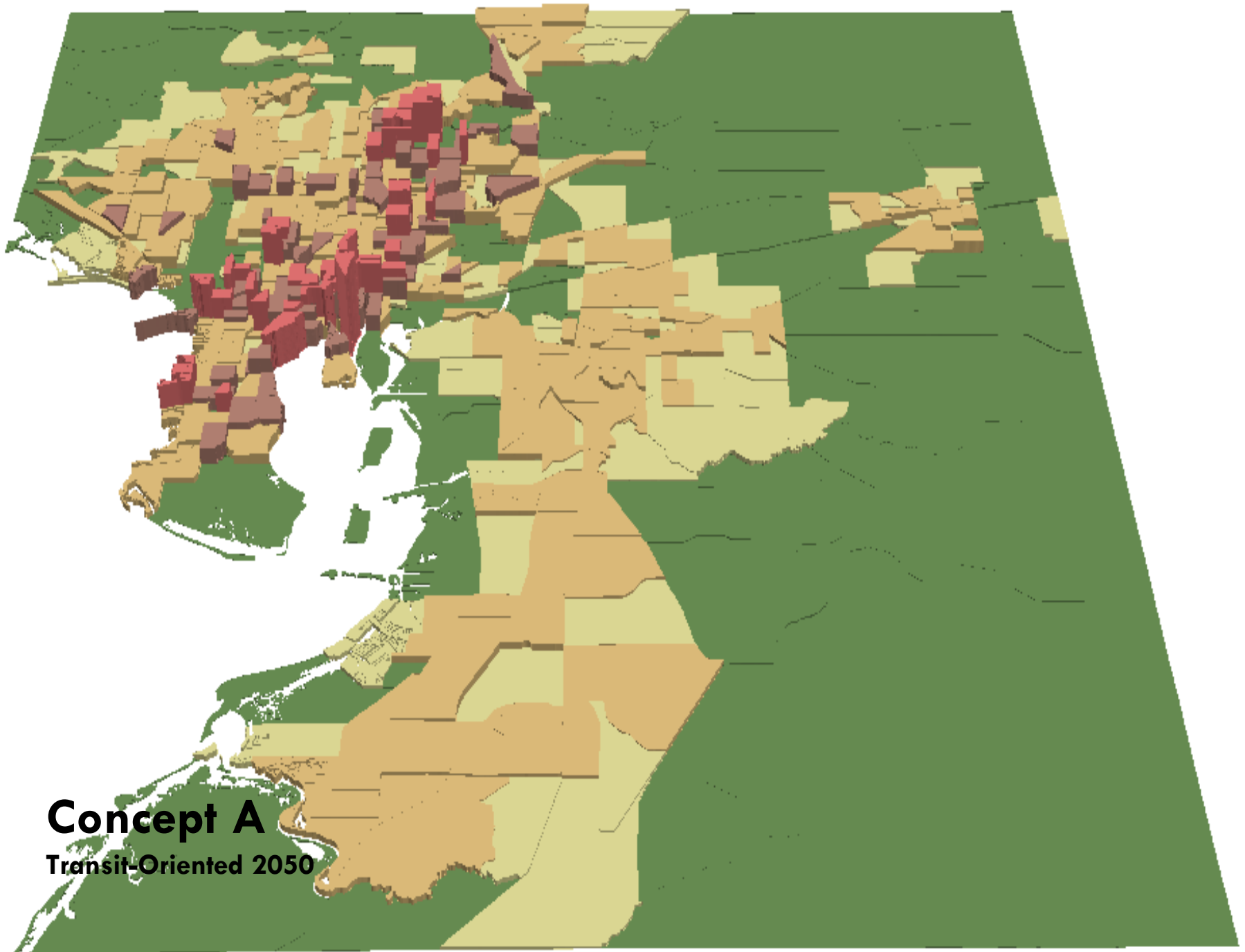


**Concept ABC:
Stations**

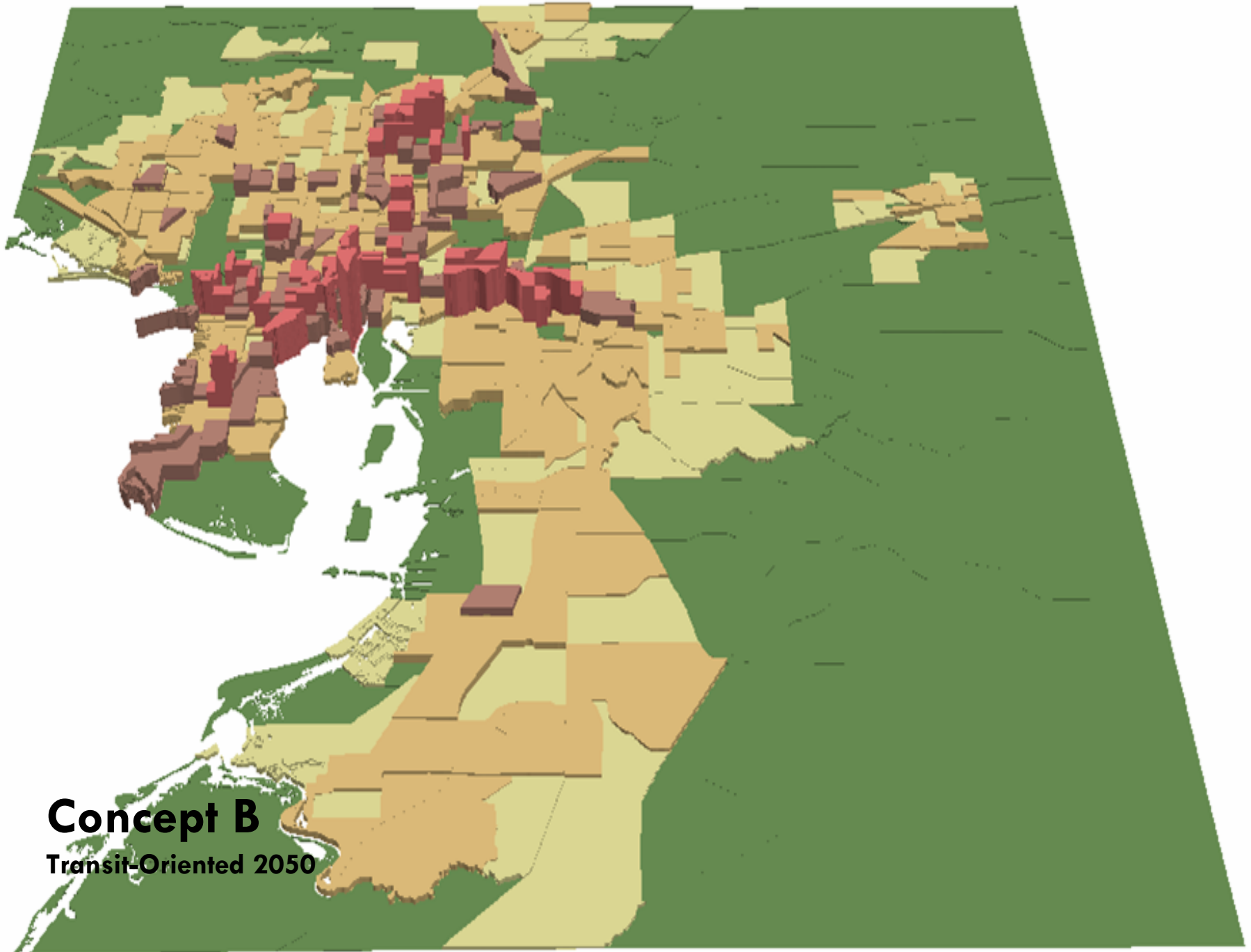




Trend 2050
Household Density

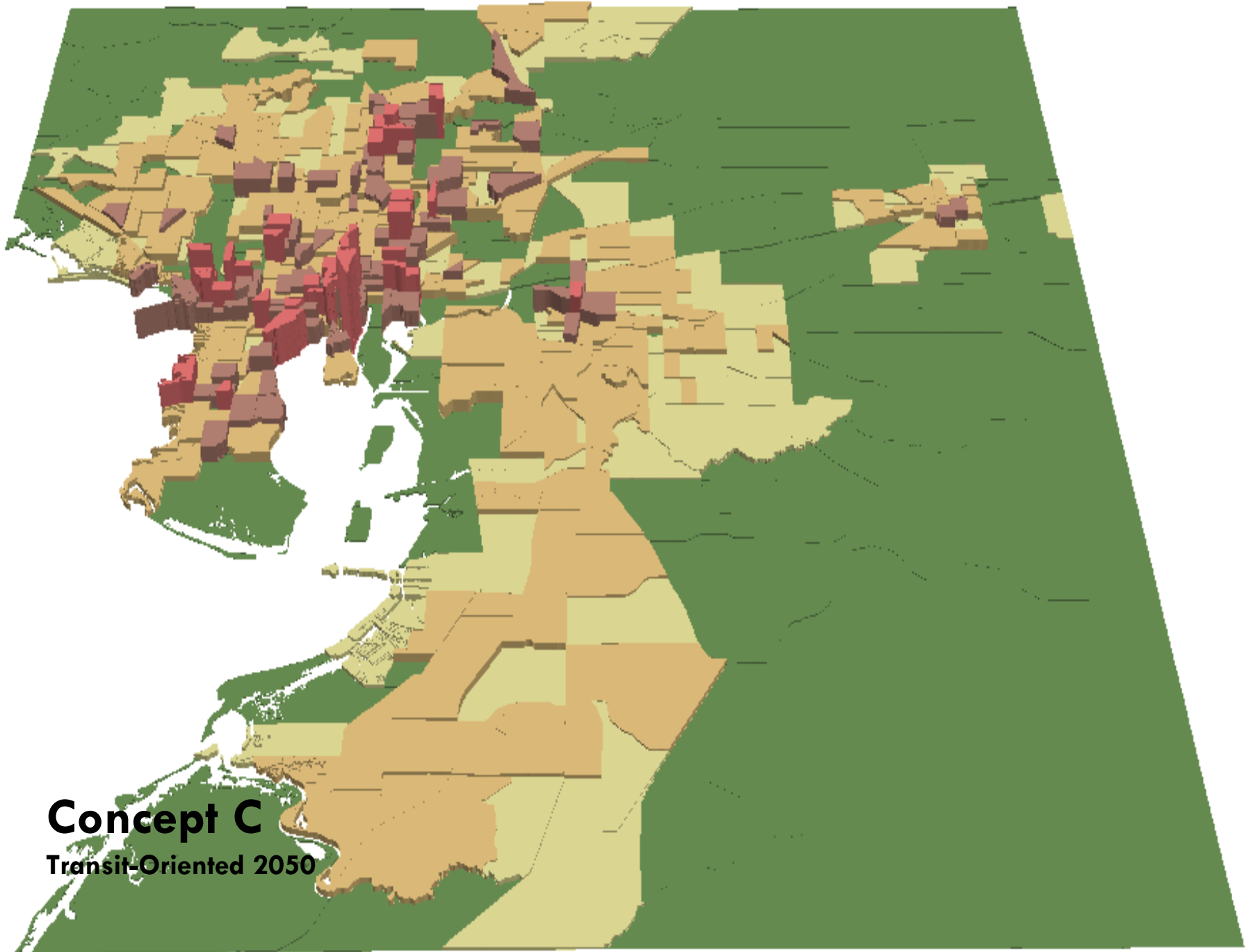


Concept A
Transit-Oriented 2050

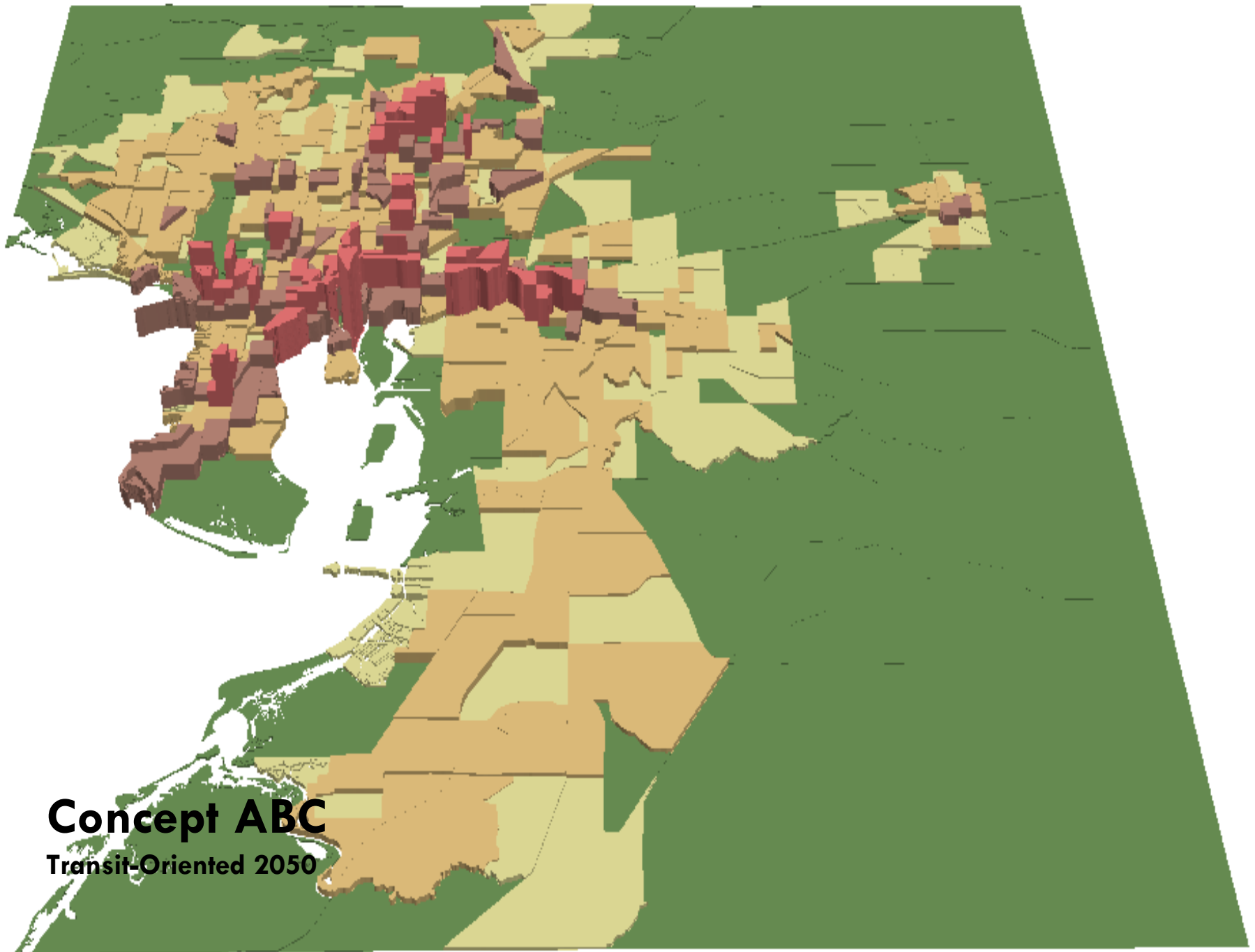


Concept B

Transit-Oriented 2050



Concept C
Transit-Oriented 2050



Concept ABC
Transit-Oriented 2050

Over 750,000 new jobs will come to Hillsborough County between 2000 and 2050.

% of new Jobs that can be located within station areas

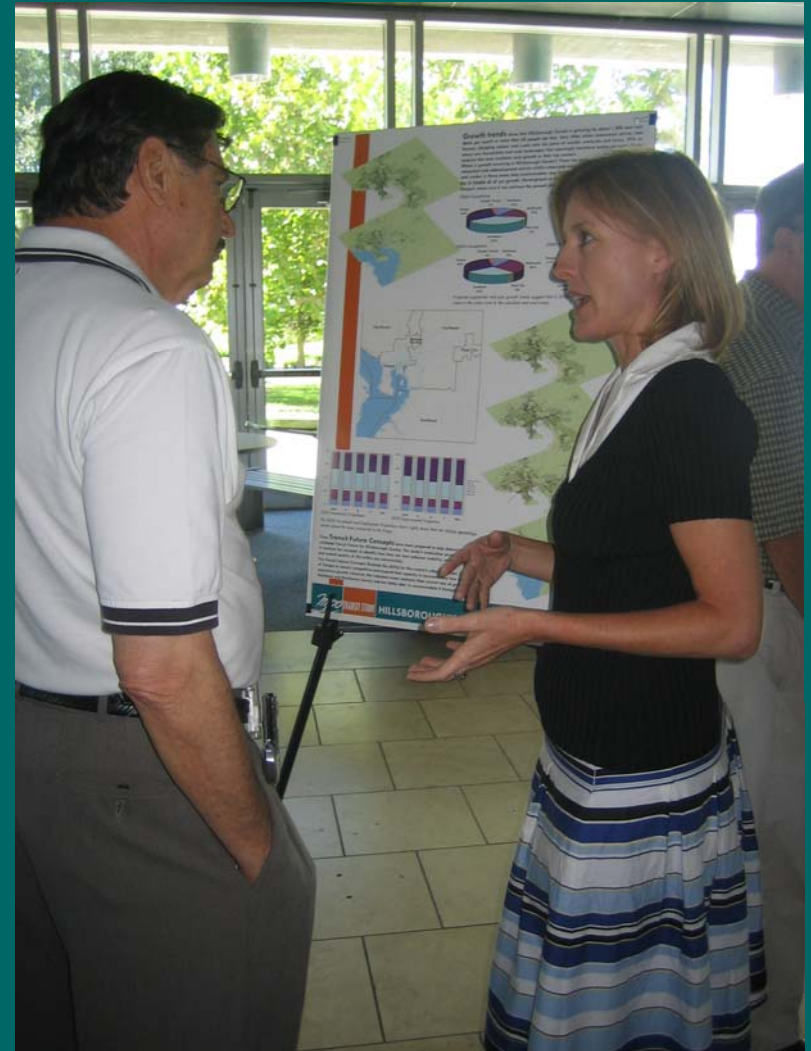
Concept A	Concept B	Concept C	Concept ABC
23%	39%	29%	48%

Over 1,000,000 new residents will come to Hillsborough County between 2000 and 2050.

% of new Residents that can be located within station areas

Concept A	Concept B	Concept C	Concept ABC
17%	40%	30%	58%

- Concept A
 - Good start
 - Needs to serve larger area
- Concept B
 - Countywide travel
 - Place to place
- Concept C
 - Regional travel
- Concept ABC
 - Good long term vision
 - Most preferred concept

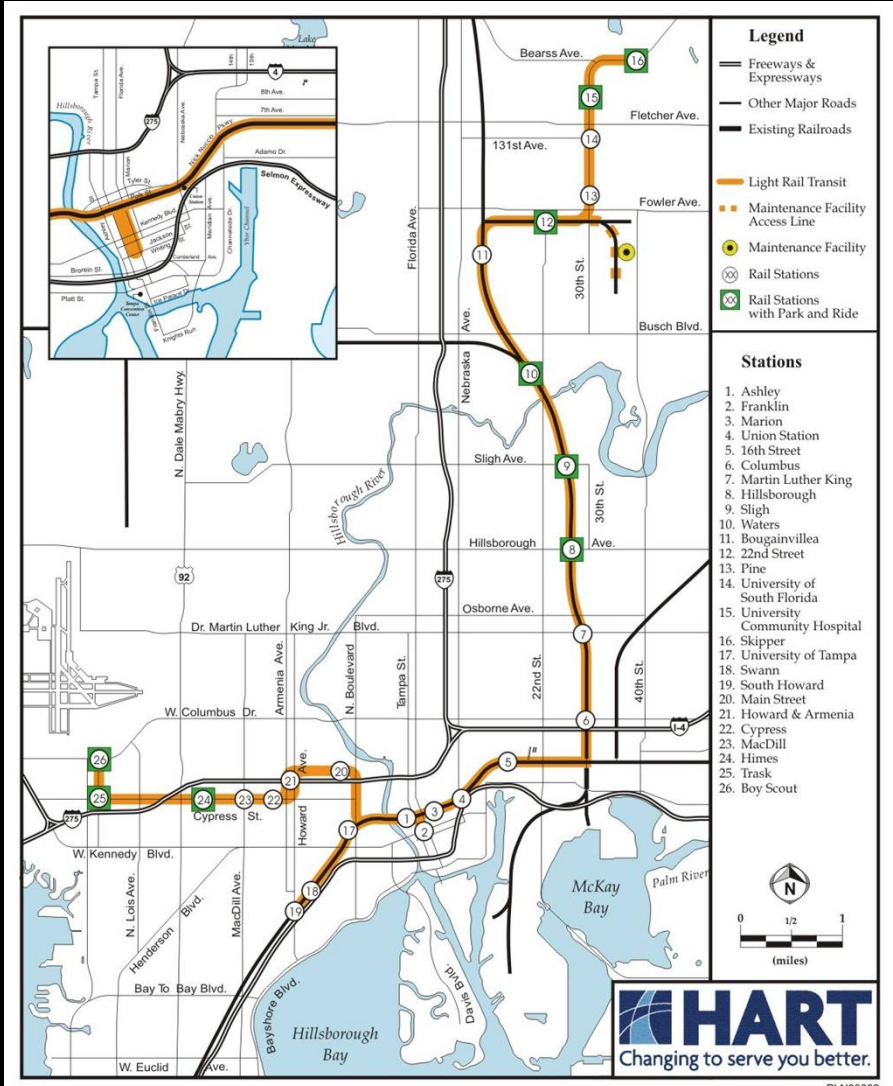
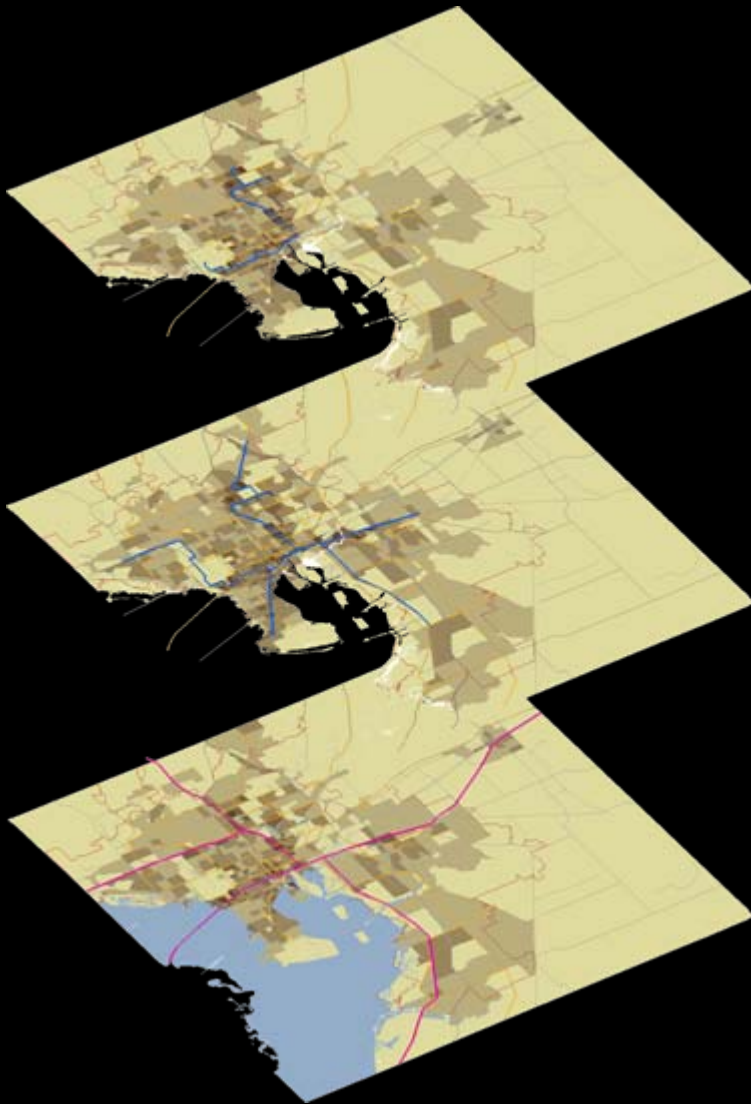


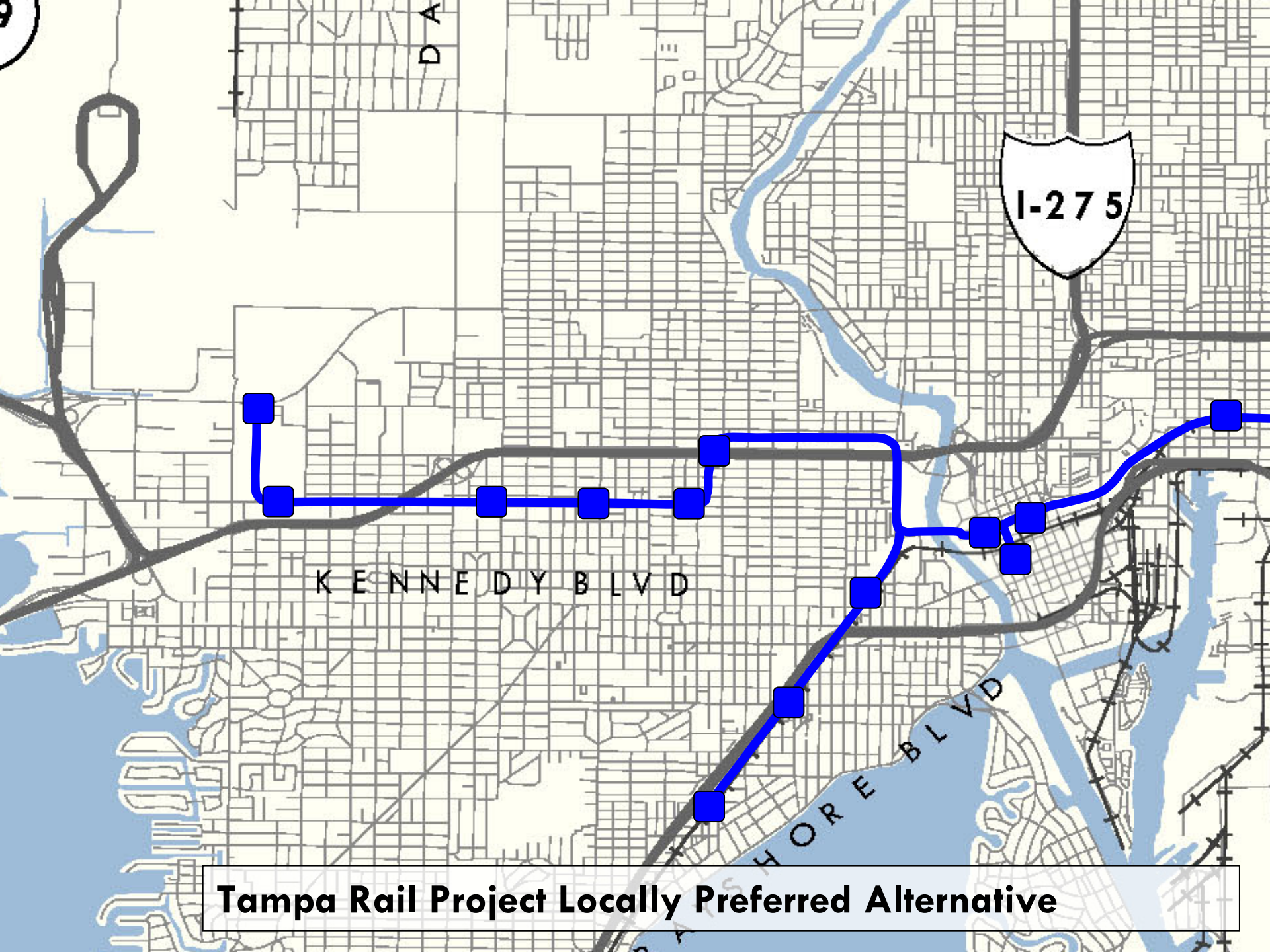


- Connecting Downtown and Westshore
- Downtown Tampa
- USF Area
- I-4 Corridor

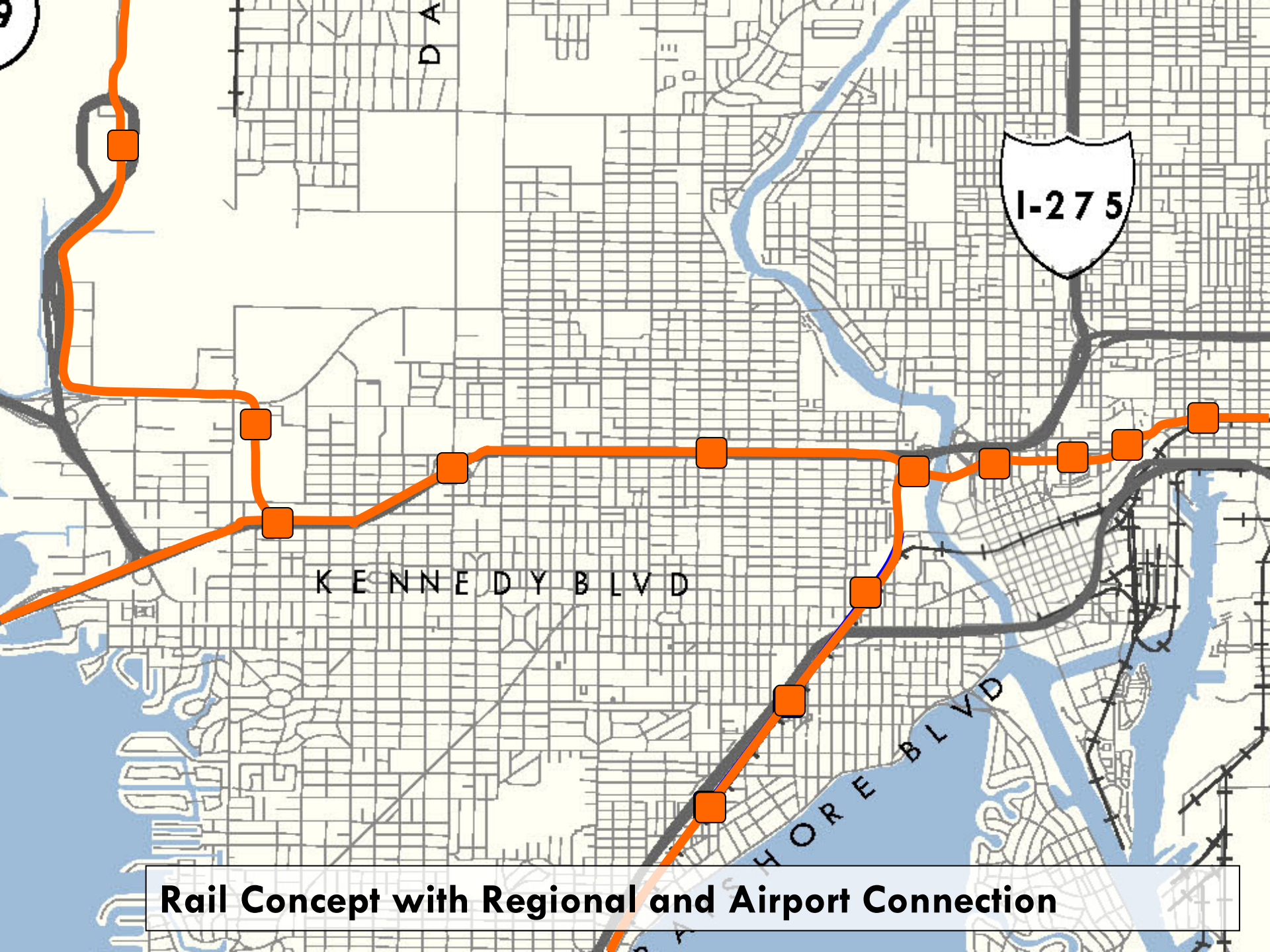
Tampa Rail Project

Locally Preferred Alternative





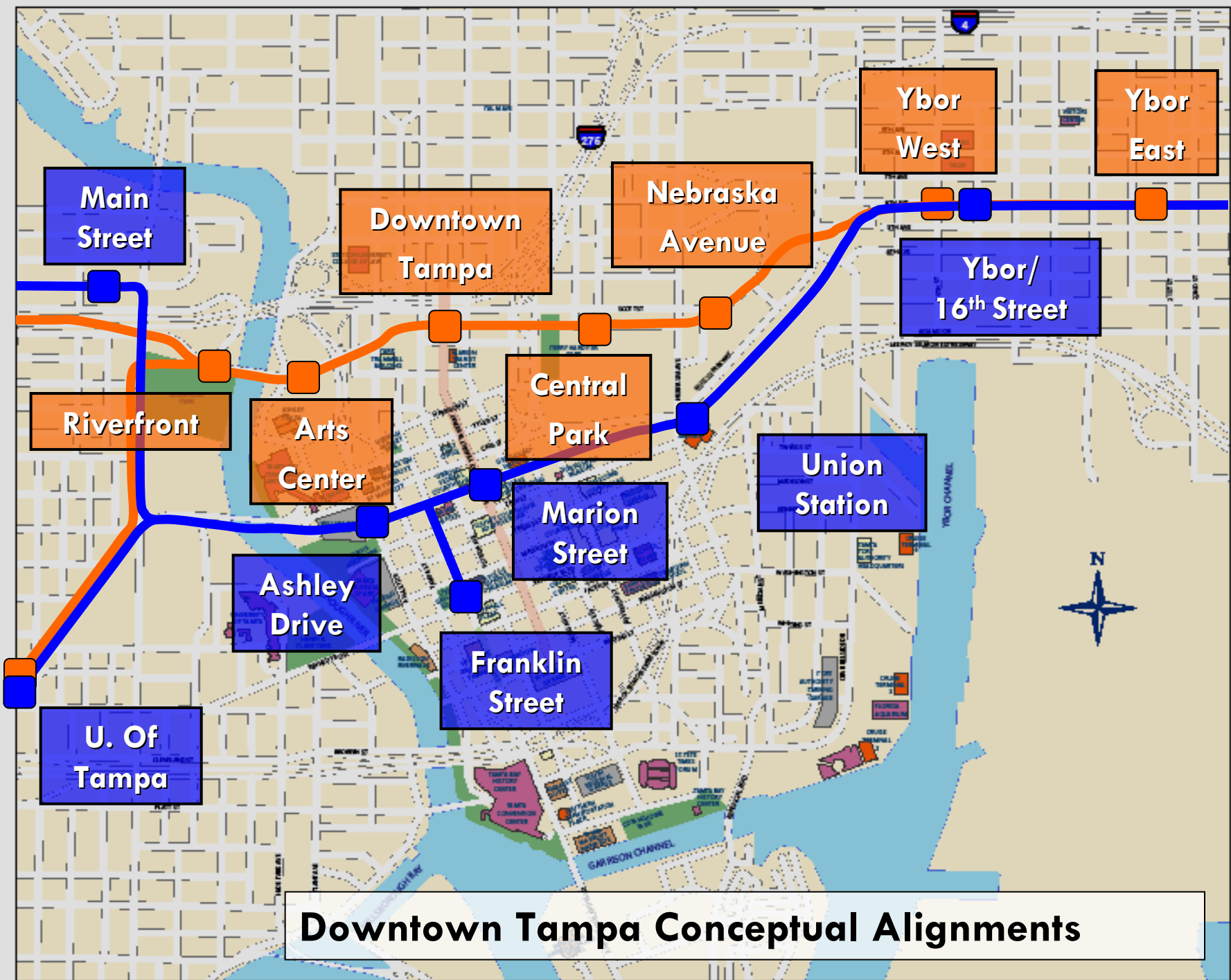
Tampa Rail Project Locally Preferred Alternative



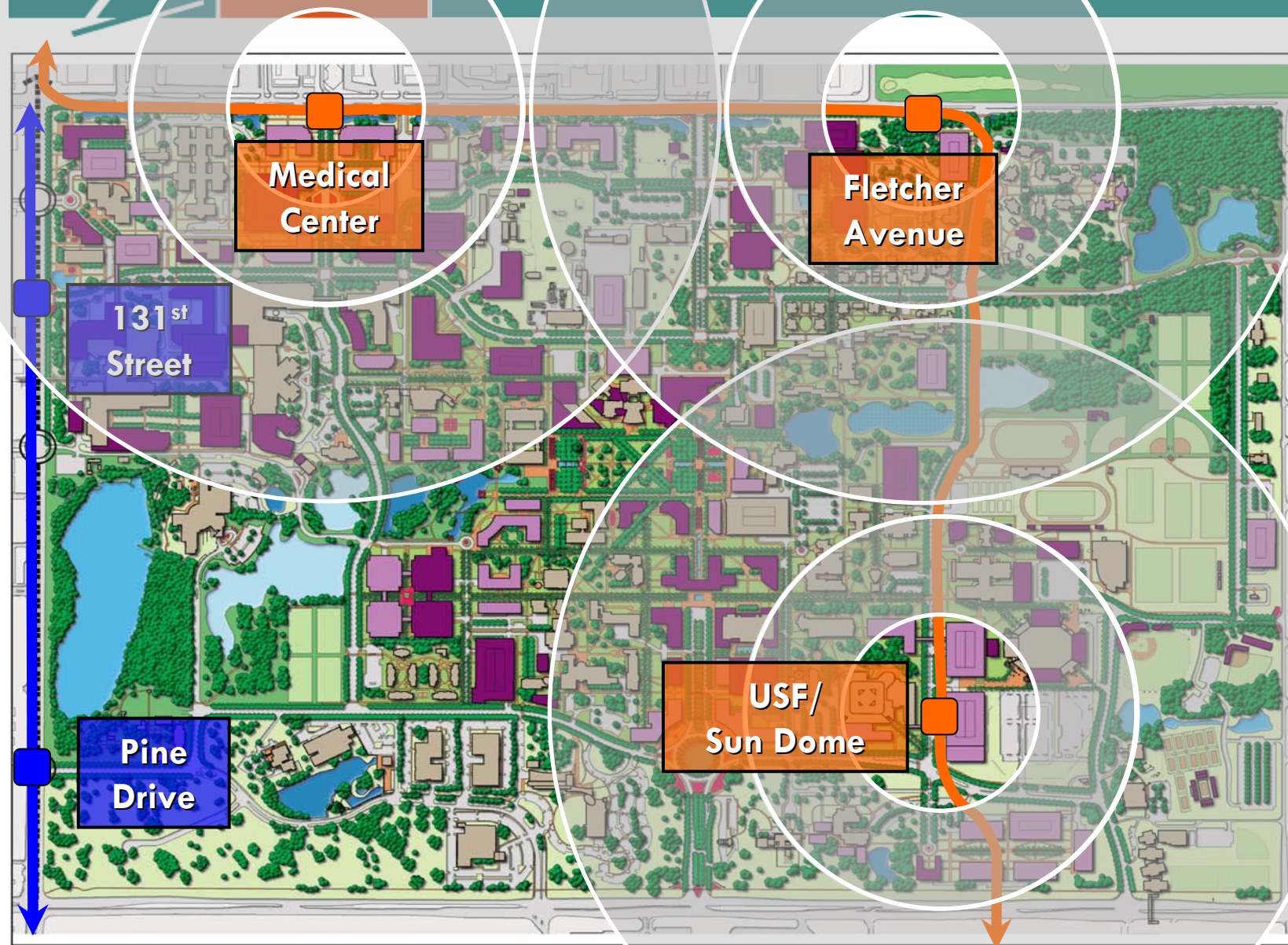
KENNEDY BLVD

DAKOTA SHORE BLVD

Rail Concept with Regional and Airport Connection



Downtown Tampa Conceptual Alignments



Element 3: Urban Design

Figure 3-3
Long-Range
Comprehensive Campus
Master Plan Illustrative

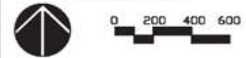
- Existing Buildings
- 10-Year Proposed Buildings
- Long-Range Proposed Buildings
- Pedestrian Circulation
- Signature Open Space
- Informal Recreation
- Signature Landscape Feature
- Existing Stormwater Facilities
- 10-year Stormwater Facilities
- 10-year Alternate Stormwater Facility
- Long-Range Stormwater Facilities
- Water Feature

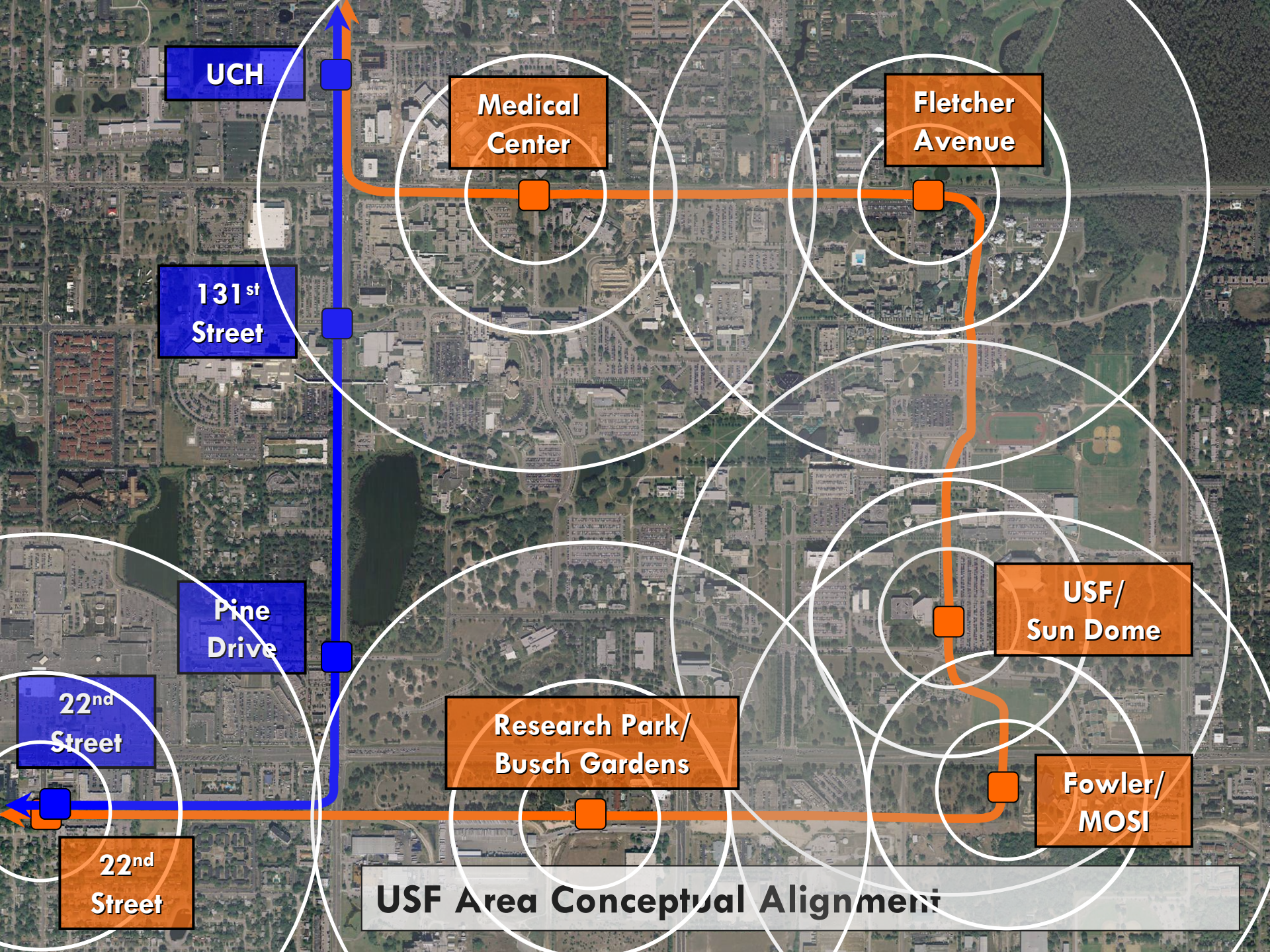
- Proposed Light Rail Alignment (Long-Range, Tampa Rail Project)
- Proposed Light Rail Station (Long-Range, Tampa Rail Project)

2005 CAMPUS
MASTER PLAN
UPDATE

University of
South Florida
Tampa

October 2006





UCH

Medical Center

Fletcher Avenue

131st Street

Pine Drive

22nd Street

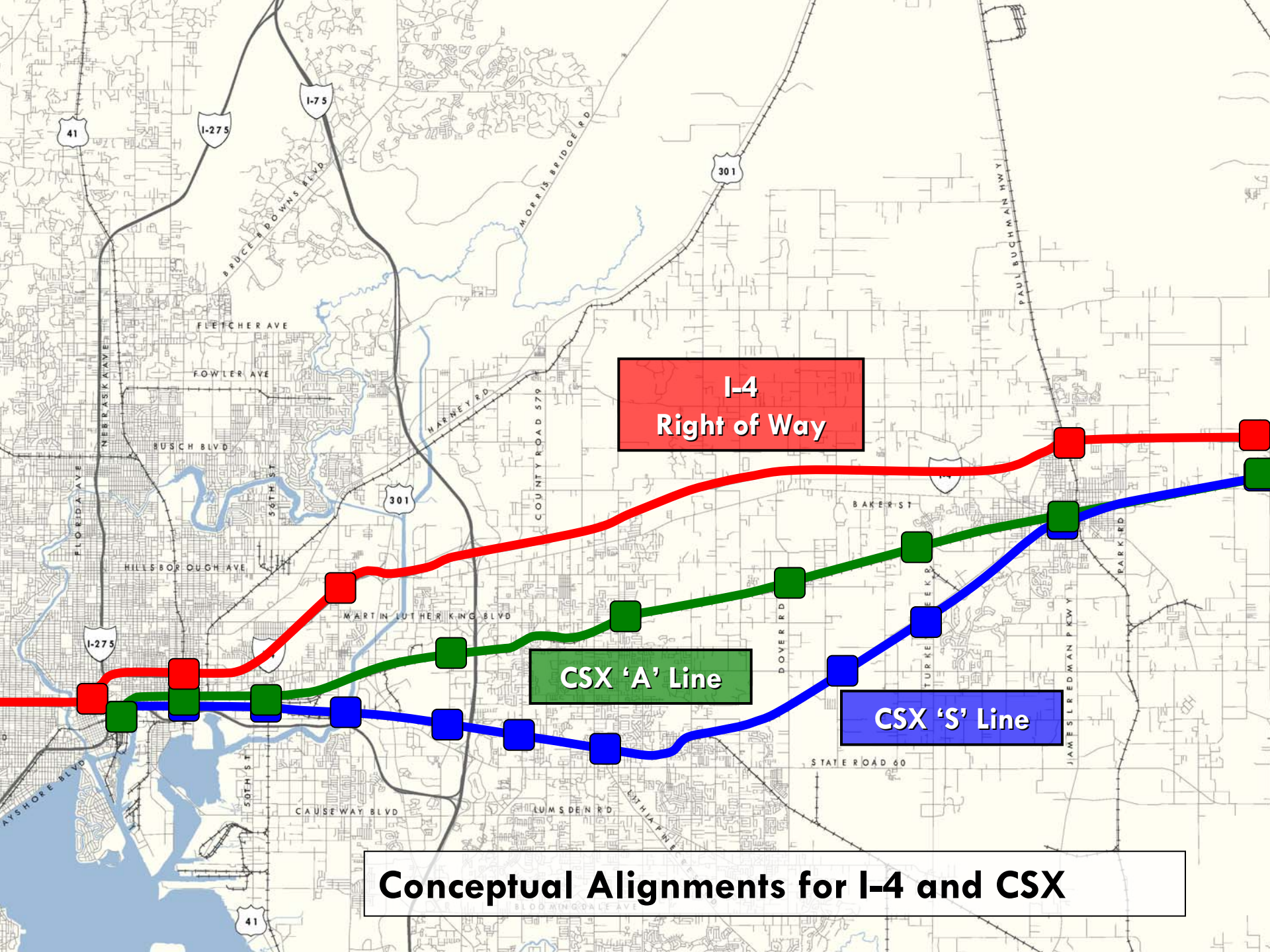
**Research Park/
Busch Gardens**

**USF/
Sun Dome**

**Fowler/
MOSI**

22nd Street

USF Area Conceptual Alignment



**I-4
Right of Way**

CSX 'A' Line

CSX 'S' Line

Conceptual Alignments for I-4 and CSX



- Transit Needs & Opportunities (May)
- Evaluation of Scenarios (Jun-Jul)
- Public Outreach (Aug)
- Preferred Scenario (Sept)
- Strategies (Oct-Nov)