

Hillsborough County MPO 2035 Long Range Transportation Plan Map 5-7

Critical Infrastructure / Key Resources



Hillsborough County MPO
County Center, 601 E. Kennedy Blvd., 18th Fl.
P.O. Box 1110 Tampa, Florida 33601-1110
813 - 272 - 5940 / 813 - 301 - 7172 fax
www.hillsboroughmpo.org



Legend

CRITICAL INFRASTRUCTURE / KEY RESOURCES

Hurricane Evacuation Zones

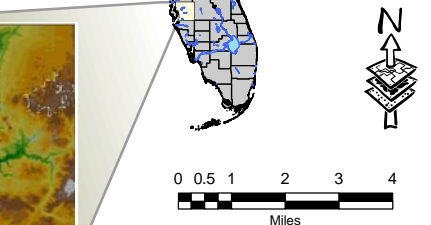
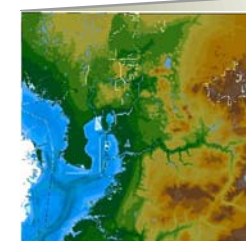
- | | | | |
|--|---|--|---------------------------|
| | A | | SIS Roads |
| | B | | Other Regional Roads |
| | C | | Existing Rail |
| | D | | Freight Activity Centers |
| | E | | HART Maintenance Facility |
| | | | HART Streetcar Facility |
| | | | HART Transfer Centers |

ADOPTED :
December 9, 2009

- | | | | |
|--|---------------------|--|-----------------|
| | Urban Service Area | | Water and Bay |
| | Hillsborough County | | Streams/Rivers |
| | Other Counties | | County Boundary |
| | Tampa | | Major Roads |
| | Plant City | | Airports |
| | Temple Terrace | | Airfields |

Locator Map

Hillsborough County 2035 L RTP
Critical Infrastructure / Key Resources
January 20, 2010



DATA SOURCES : Basemap, roads, water from Hillsborough County City-County Planning Commission. Parcel Lines and data from Hillsborough County Property Appraiser. Wetlands from SWFWMD. Significant Wildlife Habitat from Planning and Development Management, based on satellite imagery. Only wetlands greater than 40 acres depicted.

REPRODUCTION : This sheet may not be reproduced in part or full for sale to anyone without specific approval of the Hillsborough County City-County Planning Commission.

ACCURACY : It is intended that the accuracy of the basemap comply with U.S. National Map accuracy standards. However, such accuracy is not guaranteed by the Hillsborough County City-County Planning Commission. This map for illustrative purposes only. For the most current data and information, see the appropriate source.

File Location : G:\gis\mop\2035 L RTP\Critical Infrastructure\Map 5-7 11x17 2035 L RTP Critical Infrastructure and Key Resources.mxd
Author : Roger W. Mathie - GIS Analyst

