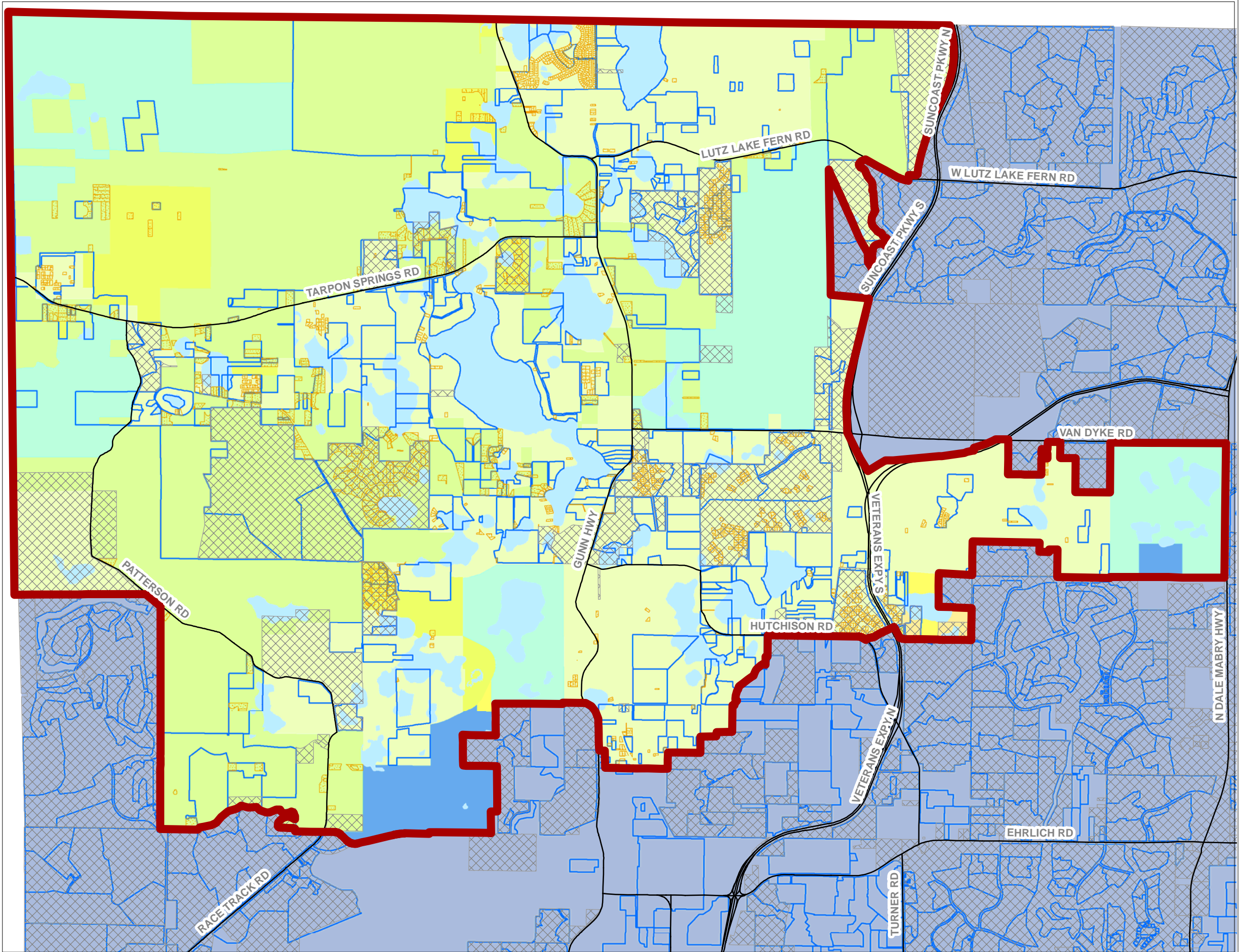


Keystone-Odessa Community Area Analysis of Parcel Size



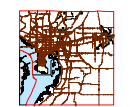
Legend

- Keystone Community Plan Area
- Major Roads
- Planned Developments
- Identified Parcels
- Subdivisions

Future Land Use Element

- A/R
- AE
- N
- P/QP
- R-1
- R-2
- R-4
- R-12
- WATER
- Unincorporated Hillsborough County

LOCATION MAP



CREDITS

JURISDICTION BOUNDARIES: Hillsborough County City-County Planning Commission. Effective to present.
 URBAN SERVICE AREA BOUNDARIES: Hillsborough County City-County Planning Commission. Effective to present.
 MAJOR ROADS: Metropolitan Planning Organization 2010 Long Range Transportation Plan. See Adopted MPO Long Range Transportation Plan for specific improvements.
 ACCURACY: It is intended that the accuracy of the base map comply with U.S. map accuracy standards. However, such accuracy is not guaranteed by the Hillsborough County City-County Planning Commission.
 REPRODUCTION: This sheet may not be reproduced in part or full for sale to anyone without specific approval of the Hillsborough County City-County Planning Commission.

REFERENCE INFORMATION



AUTHOR: Dieringer
 DATE: September 2010
 PROJECT: g:\georoom\projects\Suzi\Keystone_Overlay_Aug2010.mxd

