



AGENDA

KEYSTONE-ODESSA ADVISORY COMMITTEE MEETING #7

Location: Keystone Recreation Center
17928 Gunn Hwy., Odessa, FL 33556

Time: Sign-in 6:15 P.M. Meeting 6:30 PM to 8:00 PM

Date: Tuesday, July 13, 2010

Welcome: We would like to take a few minutes to go around the room and have new participants introduce yourselves if you have not already done so. Please tell us what interests bring you to the meeting and if you are representing others (Civic or neighborhood organization, Church, business association, business, development industry, landowners, law enforcement, fire and safety, and education interests, etc.)

- ✦ Email and Comments from June 22, 2010 Keystone-Odessa
- ✦ Long Range 2035 Transportation Plan
Ned Baier, Manager, Transportation & Land Dev. Review Div., P&GM Dept.
 - ✦ Constrained Roads, Deficient Roads, 2035 Highway Cost Affordable improvements, HC Corridor Preservation Plan
 - ✦ Sales Tax Option
- ✦ Gunn High Safety – Pedro Parra, TPC
Chris Bridges, P.E., Design and Engineering Support Sect., HCPW
 - ✦ Current projects and planned future projects
 - ✦ Gunn Highway treatmentsBill Hand, Project Manager, Real Estate Department
 - ✦ Hillsborough Greenways System, Upper Tampa Bay Trails, Phase 4 (proposed paved trail for Brooker Creek Headwaters) and community pedestrian and bicycle connections to that trail systemGena Torres, Senior Planner, MPO
 - ✦ Gunn Highway treatments
- ✦ Scenic Corridor Map U
Marcie Stenmark, Senior Planner, TPC
 - ✦ Overview of update process (Comprehensive Plan and Land Development Code)

Schedule/Topic of upcoming meetings

Adjourn

PAGE LEFT INTENTIONALLY BLANK

PAGE LEFT INTENTIONALLY BLANK

BACKGROUND DOCUMENTS INFORMATION

Hillsborough County Comprehensive Plan, Transportation Element

- Gunn Highway, Lutz Lake Fern Road, Tarpon Springs Road, Patterson Road, Race Track Road, Keystone Road, and a portion of Hutchinson Road are identified as 2 Lane enhanced roadways; S. Mobley Road is identified as a 3 Lanes; and Veterans Expressway south of Van Dyke Road as 8 Lanes and 6 Lanes north of Van Dyke Road on Map 25 of Hillsborough County Corridor Preservation Plan. (Development along these roadways are required to be set back from the roadway to allow for future lineage expansion or improvement.)

Hillsborough County MPO 2035 Long Range Transportation Plan

- All local two lane roadways in the Keystone-Odessa community plan boundary are “constrained” roads. (Long Range Transportation Plan Map 7-2 Constrained Roads in the Adopted Comprehensive Plans)
- Gunn Highway and Van Dyke Road are identified as “deficient roads”. (Long Range Transportation Plan Map 8-2, 2006 Deficient Roads)
- Tarpon Springs and Van Dyke Roads, within the Keystone-Odessa community plan boundary are identified as 2 Lanes Enhanced – Planned Projects (after 2014). (Long Range Transportation Plan Map 10-4, 2035 Highway Cost Affordable) Although outside, immediately to the east Lutz Lake Fern and Van Dyke Roads are identified as 4 Lanes – Planned Projects (after 2014).
- *Other Long Range Transportation Maps:*
 - *2035 Long Range Transportation Plan Map 10-1 2035 Cost Affordable Transit System*
 - *Regional bus on Suncoast Parkway*
 - *Local bus on Gunn Highway and Suncoast Parkway to Van Dyke Road*
 - *2035 Long Range Transportation Plan Map 10-2 Bicycle and Trails Cost Affordable*
 - *Cost Affordable bikeway on Gunn Highway to N. Mobley*
 - *Existing bikeway on Gunn Highway north of N. Mobley to Van Dyke Road*
 - *Cost Affordable roadway projects to include bicycle facilities along*
 - *Van Dyke Road*
 - *Tarpon Springs Road*
 - *Cost Affordable trails east of Gunn Highway to Angel Lane, west to Suncoast Parkway*
 - *Existing trail along Suncoast Parkway to Paso County*
 - *2035 Long Range Transportation Plan Map 10-3 Pedestrian – Sidewalks Cost Affordable*
 - *Cost affordable roadway projects to include pedestrian facilities*
 - *Tarpon Springs Road and Van Dyke Road*
 - *2035 Long Range Transportation Plan Map 10-5 Intelligent Transportation System*
 - *Cost Affordable projects to include signal improvements*

- *Tarpon Springs Road and Van Dyke Road*
 - *Other ITS corridor improvements*
 - *Suncoast Parkway to just south of Van Dyke Road*
- The Long Range Transportation Plan Sales Tax Option within the Keystone-Odessa community boundary:
 - identifies New & Enhanced Local Bus Routes on Gunn Highway and the Suncoast Parkway up to Van Dyke Road, and on Race Track Road up to the intersection of Boy Scout Road; and,
 - trails west on east along Gunn Highway up to Van Dyke.

Keystone-Odessa Community Plan – Streetscape/Roadway, Transportation, Livability/Safety Strategies

Streetscape/Roadway

Residents of Keystone-Odessa want an integrated shaded streetscape/roadway system, which visually enhances its corridors. To do so:

- canopy trees along roadways designated as scenic corridors will be protected;
- planting programs of drought tolerant trees and vegetation along roadways identified as scenic corridors and/or greenway trails will be undertaken to create a sense of place, and to improve or preserve specific views;
- Gateways, located to create a sense of arrival through a change in character from the surrounding landscape are identified. These gateways, developed through local community input are intended to create a lasting impression through:
 - the selection of signage;
 - location of structures;
 - proximity of drought tolerant shrubbery or other vegetation; and
 - roadway layout/configuration; and,
- residents will work with utility providers to determine ways to minimize the use of overhead utilities; and,
- street lighting should not be required nor permitted unless public safety is at risk.

Transportation

The Keystone-Odessa community is presently served by a system of two-lane roadways. Gunn Highway is a primary north/south roadway with Boy Scout, Patterson and Race Track Road all serving in that similar capacity. Van Dyke, Lutz-Lake Fern, Tarpon Springs, North and South Mobley roads all provide east to west travel. Several

other significant roadways serve the community: Hutchinson, Tobacco, Lakeshore, Lake LeClare Roads are just a few. In recent years, the Veterans Expressway has been constructed through the community providing limited access at Van Dyke, and Hutchinson Roads. In 2001, the Suncoast Expressway will tie into the Veterans Expressway with an improved intersection at Van Dyke Road and eventually an access to Lutz-Lake Fern Road.

These limited access facilities should be seen as relief for the heavily traveled roadways in the Keystone-Odessa community, particularly for Gunn Highway, which serves Pasco County travelers, as well as Hillsborough County. The Keystone-Odessa community borders both Pasco County and Pinellas County, both of which are experiencing suburban growth close to the Keystone-Odessa area. The Suncoast Expressway, the improved Dale Mabry, and U.S. 41 Highways all provide or will provide substantial north/south access between Hillsborough and Pasco Counties. East-west traffic from Pinellas has limited choices, but an extension to Linebaugh Avenue into northern Pinellas will eventually provide an additional choice for travelers headed into Hillsborough County.

Residents want to retain the existing roadways as two-lane facilities geared to primarily serve local traffic. While it is understood that over time some changes to roadway configuration may be needed for safety, the residents want to limit those changes to turn lanes, pedestrian/equestrian crossings or traffic control mechanisms rather than widening the roadways.

Gunn Highway will be identified as a County roadway, which cannot be widened further due to social, economic, policy and environmental constraints. The identified and designated constrained corridors list found in the Transportation Element will also be recognized. The provision to eliminate the truck route on Gunn Highway from the Pasco County Line to Van Dyke, when the Suncoast Corridor is completed, will be enforced as set out by the adopted Hillsborough County Truck Route Ordinance. Equestrian trail connections are important and should be considered in-line with future improvements. Measures such as traffic calming, inter-modal connections to disperse impacts, and diverting traffic to the Suncoast Expressway are also to be considered.

Livability/Safety

In order to ensure livable roadways in the community the County shall encourage development of pedestrian and equestrian trails along roadways identified in the 2015 Scenic Corridor Map, in the Future Land Use Element. Off-road pedestrian/equestrian trails and bikeways will developed whenever possible in the preserved greenway

corridors identified in Hillsborough Greenways Master Plan. Off-road trails and bikeways will be developed when possible in these greenways. The 1995 Greenways Master Plan was used in identifying pedestrian trails, which should be included to provide connectivity.

Roadway Description

Station	1998	1999	2000	2001	2002	2003	2004	2005	2006	2007	2008
221115	37,018		40,210			35,457					
221045	16,254		19,549		11,312			21,224		20,412	
221035	14,719			14,849	11,312	17,434		11,214		13,358	
210030		14,930	11,900	14,777	14,401	14,115		15,851		15,359	
221105		36,653				35,457				32,770	
115723											17,300
115722											32,000
221035	14,719			14,849	11,312	17,434		11,214		13,358	
221065	24,780	20,754			18,941			20,335			
115252	39,500	44,500	43,500	43,000	45,000	44,000	43,000	45,000	51,000	54,500	46,000
210031			25,235		18,941	28,698		32,407		31,142	
210031			25,235		18,941	28,698		32,407		31,142	
221075	13,712							21,754			
115722											32,000
221045	16,254		19,549		11,312			21,224		20,412	
221055	16,060		14,594	13,704	16,002			19,725			
221085		22,841	24,146		26,450	25,701				31,914	
340015					8,587		9,688	6,395	9,617		
323930					7,680	3,878	7,008	7,819	5,918		
340015					8,587		9,688	6,395	9,617		
340015					8,587		9,688	6,395	9,617		
323950					18,570	19,914	19,880	21,598	18,829		
323920					1,960	1,203	1,833	1,246	1,156		

GUNN HWY: LINEBAUGH AVE - to - S DALE MABRY RAMP
 GUNN HWY: LUTZ LAKE FERN - to - TARPON SPRINGS
 GUNN HWY: LUTZ LAKE FERN - to - TARPON SPRINGS
 GUNN HWY: MANHATTAN DR - to - CITRUS PARK DR
 GUNN HWY: MULLIS CITY - to - LINEBAUGH AVE
 GUNN HWY: N MOBLEY RD - to - RACE TRACK RD
 GUNN HWY: NIXON RD - to - SUGARMILL DR
 GUNN HWY: PASCO COUNTY LINE - to - LUTZ LAKE FERN
 GUNN HWY: RACE TRACK RD - to - S MOBLEY RD
 GUNN HWY: S DALE MABRY RAMP - to - DALE MABRY OVERPASS
 GUNN HWY: S MOBLEY RD - to - SHELDON RD
 GUNN HWY: SHELDON RD - to - CITRUS PARK ELM SCH
 GUNN HWY: SHELDON RD - to - CITRUS PARK ELM SCH
 GUNN HWY: SUGARMILL DR - to - CASEY RD
 GUNN HWY: TARPON SPRINGS - to - VAN DYKE RD
 GUNN HWY: VAN DYKE RD - to - N MOBLEY RD
 GUNN HWY: VETERANS EXPWY - to - HENDERSON RD
 GUNN ST: ICE PALACE DR - to - CHANNELSIDE DR
 HABANA AVE: CITY LIMITS - to - HENRY AVE
 HABANA AVE: COLUMBUS DR - to - TAMPA BAY BLVD
 HABANA AVE: HENRY AVE - to - SLIGH AVE
 HABANA AVE: HILLSBOROUGH AVE - to - CITY LIMITS
 HABANA AVE: M L KING BLVD - to - HILLSBOROUGH AVE
 HABANA AVE: MAIN ST - to - COLUMBUS DR

Roadway Description

Station 1998 1999 2000 2001 2002 2003 2004 2005 2006 2007 2008

326540	11,240		6,005	11,184	7,525	7,672	4,700
328550	12,402		6,634	11,875	11,560	8,745	12,827
328550	12,402		6,634	11,875	11,560	8,745	12,827
328530	11,947		9,061	16,090	14,203	13,868	15,534
326550	13,374		7,637	17,521	6,667	9,876	5,930
328540	7,585		6,484	10,139	6,586	4,306	3,711
221505	44,009	41,283					22,781
221515	41,617	36,466	25,799	34,022	33,832	39,584	27,220
221520	23,102		10,785	11,077	17,058	14,005	12,553
221515	41,617	36,466	25,799	34,022	33,832	39,584	27,220
221520	23,102		10,785	11,077	17,058	14,005	12,553
221495		60,874		48,261	46,387	46,464	40,322
221520	23,102		10,785	11,077	17,058	14,005	12,553
221520	23,102		10,785	11,077	17,058	14,005	12,553
221523					8,066		6,860
221535	3,955	6,011	5,405	5,813	6,709	6,723	
221535	3,955	6,011	5,405	5,813	6,709	6,723	
221523					8,066		6,860
221535	3,955	6,011	5,405	5,813	6,709	6,723	
221524					12,983		13,410
221524					12,983		13,410
221524					12,983		13,410
221545	21,758	16,510	18,113	20,951	23,150	24,855	21,120

LOIS AVE: MORRISON ST - to - SWANN AVE

LOIS AVE: OSBORNE - to - SOUTH ST

LOIS AVE: SOUTH ST - to - CREST AVE

LOIS AVE: SPRUCE ST - to - BOY SCOUT BLVD

LOIS AVE: SWANN AVE - to - AZEELE ST

LOIS AVE: TAMPA BAY BLVD - to - M L KING BLVD

LUMSDEN RD: BRANDON PKWY - to - KINGS AVE

LUMSDEN RD: BRYAN RD - to - LITHIA PINECREST

LUMSDEN RD: DURANT RD - to - VALRICO RD

LUMSDEN RD: KINGS AVE - to - PARSONS AVE

LUMSDEN RD: LITHIA PINECREST - to - DURANT RD

LUMSDEN RD: PARSONS AVE - to - BRYAN RD

LUMSDEN RD: PROVIDENCE DR - to - BRANDON PKWY

LUMSDEN RD: SAINT CLOUD AVE - to - MULRENNAN RD

LUMSDEN RD: VALRICO RD - to - SAINT CLOUD AVE

LUTZ LAKE FERN RD: ANGEL LN - to - SUNCOAST PKWY

LUTZ LAKE FERN RD: CROOKED LANE RD - to - US HWY 41

LUTZ LAKE FERN RD: DALE MABRY HWY - to - HOLLY LN

LUTZ LAKE FERN RD: GUNN HWY - to - ANGEL LN

LUTZ LAKE FERN RD: HOLLY LN - to - CROOKED LANE RD

LUTZ LAKE FERN RD: LAKE PATIENCE - to - SUN LAKE BLVD

LUTZ LAKE FERN RD: SUN LAKE BLVD - to - DALE MABRY HWY

LUTZ LAKE FERN RD: SUNCOAST PKWY - to - LAKE PATIENCE

LYNN TURNER: ESSRIG ELEMENTARY - to - EHRlich RD



**Hillsborough County MPO 2035
Long Range Transportation Plan
Map 7-2 Constrained Roads
in Adopted Comprehensive Plans**

Hillsborough County MPO
County Center 601 E. Kennedy Blvd., 18th Fl.
P.O. Box 1110 Tampa, Florida 33601-1110
813 - 272 - 5940 / 813 - 301 - 7172 fax
www.hillsboroughmop.org



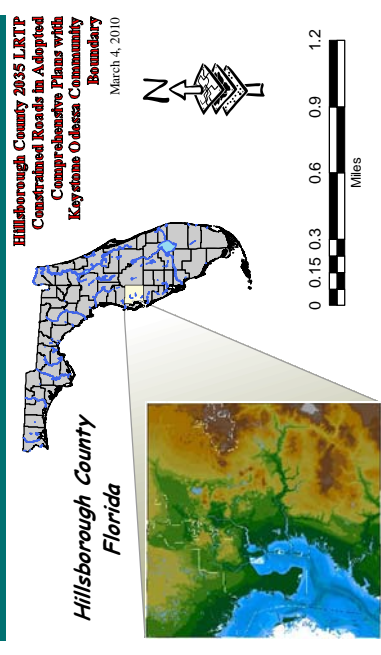
Legend

- ROADS**
- Constrained
 - Fletcher Avenue to be Constrained after widening to 6 Lanes
- PLANNING AREAS**
- Keystone Odessa

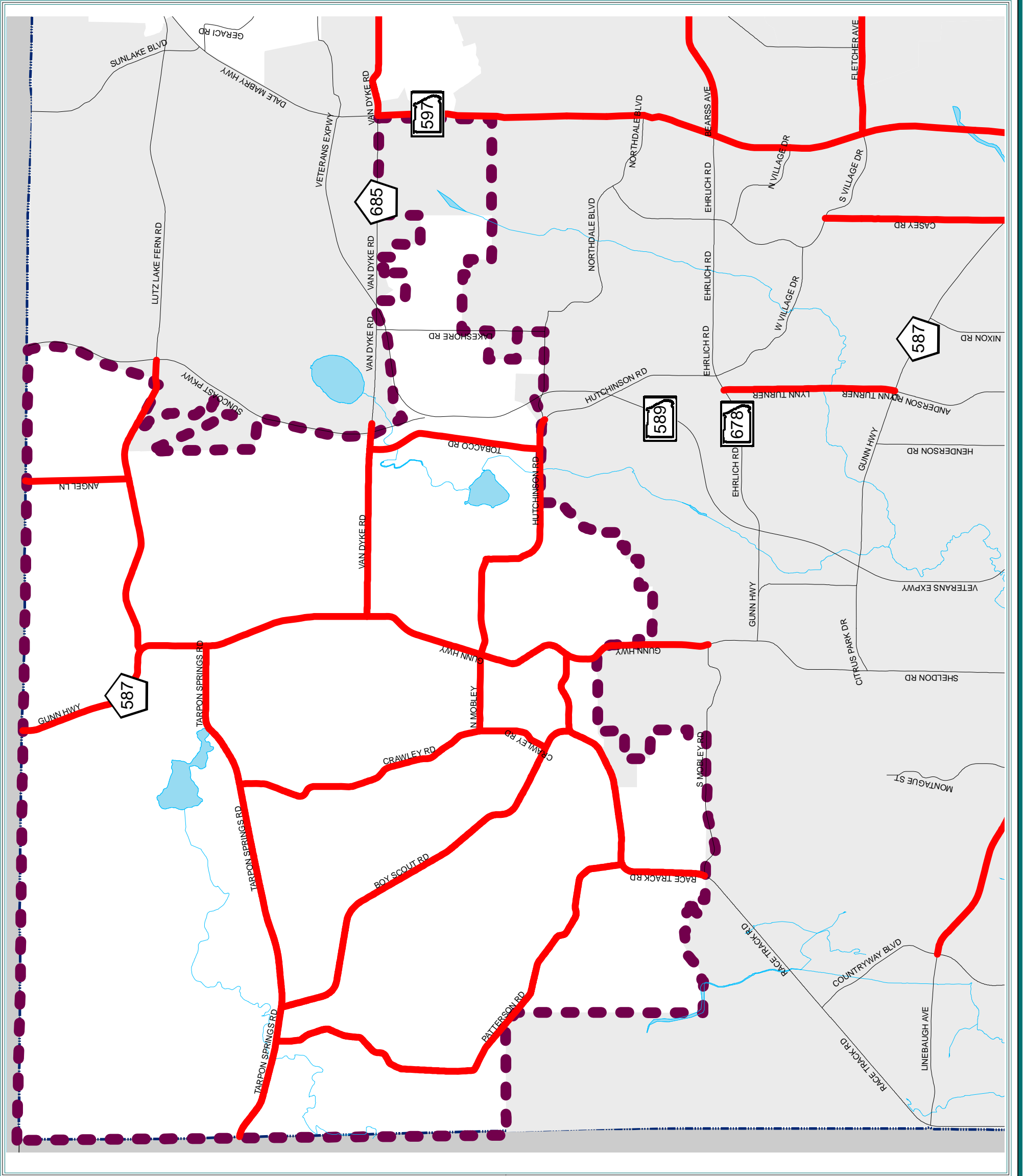
**ADOPTED :
December 9, 2009**

- Urban Service Area
- Hillsborough County
- Other Counties
- Water and Bay
- Streams/Rivers
- County Boundary
- Major Roads

Locator Map



DATA SOURCES: Base map, roads, water from Hillsborough County City-County Planning Commission. Parcel Lines and data from Hillsborough County Property Appraiser. Wetlands from SWFWMD. Significant Wildlife Habitat from Planning and Development Management, based on satellite imagery. Only wetlands greater than 40 acres depicted.
REPRODUCTION: This sheet may not be reproduced in part or full for sale to anyone without specific approval of the Hillsborough County City-County Planning Commission.
ACCURACY: It is intended that the accuracy of the base map comply with U.S. National Map Accuracy standards. However, such accuracy is not guaranteed by the Hillsborough County City-County Planning Commission. This map for illustrative purposes only.
File Location: G:\gis\proj\proj\map\Map\Community Plan Maps\11x17 2035 LRTP Constrained Roads in Adopted Comprehensive Plans with Keystone Odessa Community Plan Boundary.mxd
Author: Roger W. Matthe - GIS Analyst



PAGE LEFT INTENTIONALLY BLANK

Hillsborough County MPO 2035 Long Range Transportation Plan Map 8-2 2006 Deficient Roads



www.hillsboroughmopo.org
Hillsborough County MPO
County Center, 601 E. Kennedy Blvd., 18th Fl.
P.O. Box 1110 Tampa, Florida 33601-1110
813 - 272 - 5940 / 813 - 301 - 7172 fax

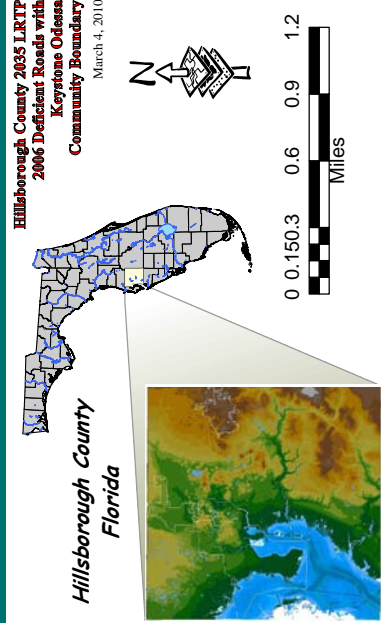


Legend

- ROADS**
- Deficient Roads
- PLANNING AREAS**
- Keystone Odessa
- Water and Bay**
- Streams/Rivers
- County Boundary**
- Major Roads
- Urban Service Area**
- Hillsborough County
 - Other Counties

ADOPTED:
December 9, 2009

Locator Map

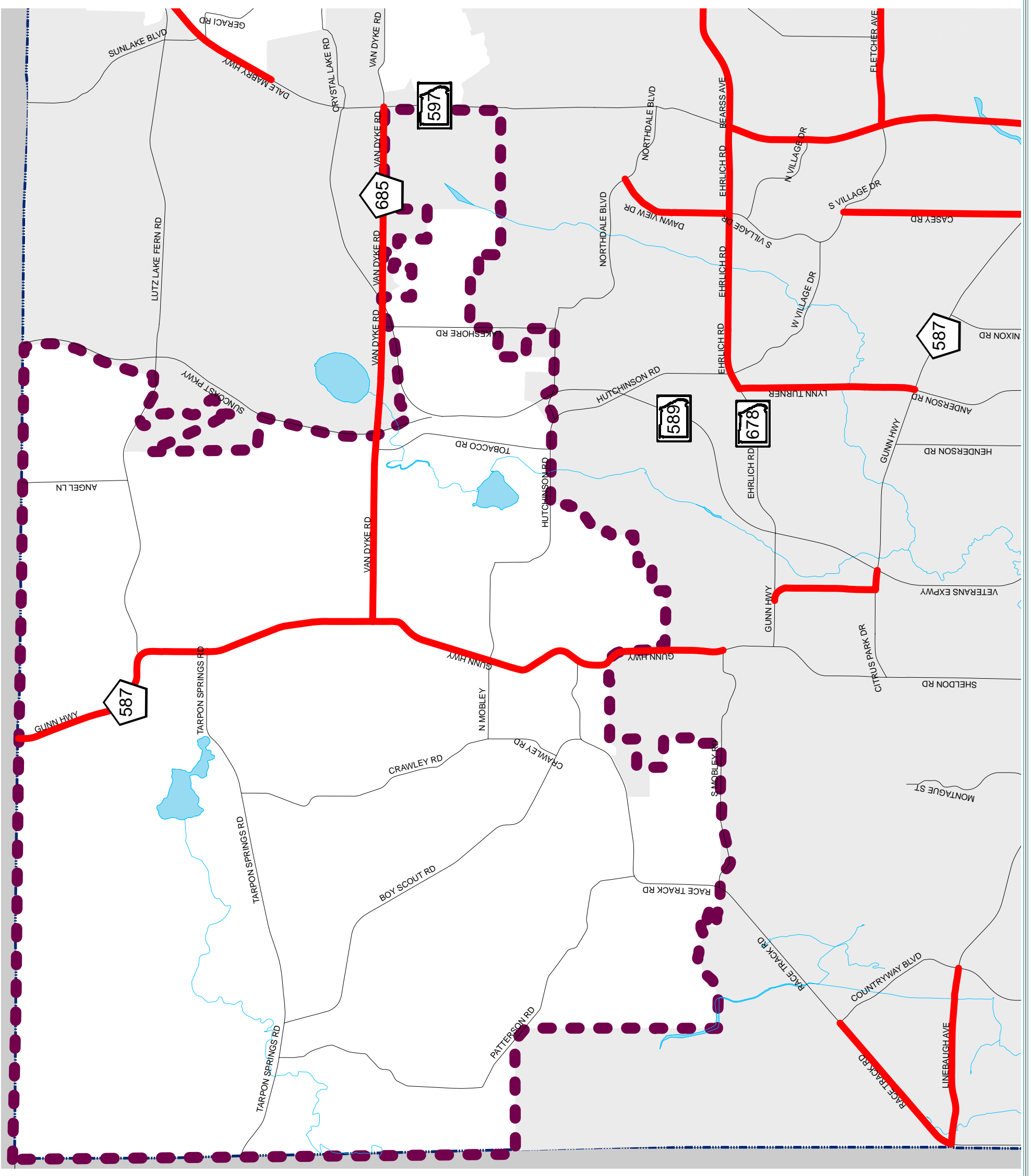


DATA SOURCES - Base map, roads, water from Hillsborough County City-County Planning Commission. Parcel Lines and data from Hillsborough County Property Appraiser. Wetlands from SWFWMD. Significant Wildlife Habitat from Planning and Development Management, based on satellite imagery. Only wetlands greater than 40 acres depicted.

REPRODUCTION - This sheet may not be reproduced in part or full for sale to anyone without specific approval of the Hillsborough County City-County Planning Commission.

ACCURACY - It is intended that the accuracy of the base map comply with U.S. National Map Accuracy standards. However, such accuracy is not guaranteed by the Hillsborough County City-County Planning Commission. This map is for illustrative purposes only.

File Location: G:\GIS\Projects\LRTP\Roads\Community_Boundaries_11172005.LRTP_2006 Deficient Roads with Keystone Odessa Community Boundary.mxd
Author: Roger W. Mathie - GIS Analyst



PAGE LEFT INTENTIONALLY BLANK

Hillsborough County MPO 2035 Long Range Transportation Plan Map 10-4 2035 Highway Cost Affordable

Hillsborough County MPO
County Center, 601 E. Kennedy Blvd., 18th FL
P.O. Box 1110 Tampa, Florida 33601-1110
813 - 272 - 5940 / 813 - 301 - 7172 fax
www.hillsboroughmopo.org

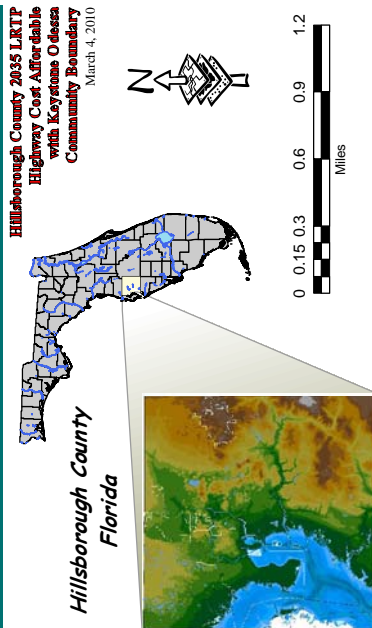


Legend

- LANEAGE**
- 2 Lanes - Planned Projects (after 2014)
 - 2 Lanes - Committed Projects (by 2014)
 - 4 Lanes - Planned Projects (after 2014)
 - 4 Lanes - Committed Projects (by 2014)
 - 4 Lanes - Planned Projects (by 2014)
 - 6 Lanes - Planned Projects (after 2014)
 - 6 Lanes - Committed Projects (by 2014)
 - 8 Lanes - Planned Projects (after 2014)
 - 8 Lanes - Committed Projects (by 2014)
 - 10 Lanes - Planned Projects (after 2014)
 - 10 Lanes - Committed Projects (by 2014)
 - 12 Lanes - Planned Projects (after 2014)
- PLANNING AREAS**
- Urban Service Area
 - Hillsborough County
 - Other Counties
 - Water and Bay
 - Streams/Rivers
 - County Boundary
 - Major Roads
 - Keystone Odessa

ADOPTED:
December 9, 2009

Locator Map

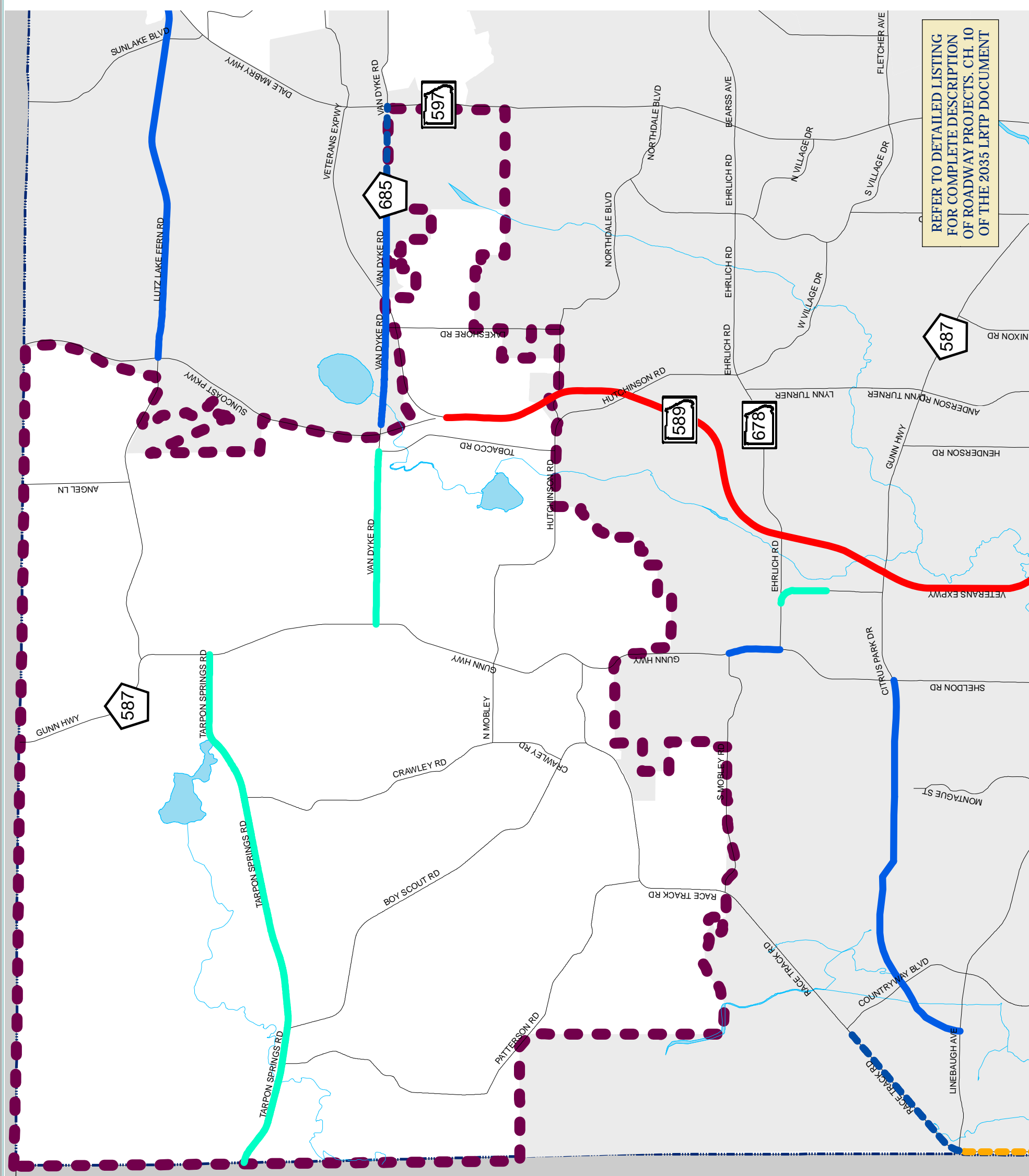


DATA SOURCES: Base map, roads, water from Hillsborough County City-County Planning Commission; Parcel Lines and data from Hillsborough County Property Appraiser; Wetlands from SWFWMD; Significant Wildlife Habitat from Planning and Development Management, based on satellite imagery. Only wetlands greater than 40 acres depicted.

REPRODUCTION: This sheet may not be reproduced in part or full for sale to anyone without specific approval of the Hillsborough County City-County Planning Commission.

ACCURACY: It is intended that the accuracy of the base map, with U.S. National Map accuracy standards. However, such accuracy is not guaranteed by the Hillsborough County City-County Planning Commission. For the most current data and information, see the appropriate source.

File Location: G:\lgrtp\projects\lgrtp\lgrtp\Community Plan Maps\11x17 2035 LRTP Highway Cost Affordable with Keystone Odessa Community Boundary.mxd
Author: Roger W. Mathis - GIS Analyst



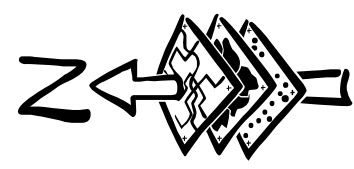
PAGE LEFT INTENTIONALLY BLANK

HILLSBOROUGH COUNTY COMPREHENSIVE PLAN Map 25 HC CORRIDOR PRESERVATION PLAN

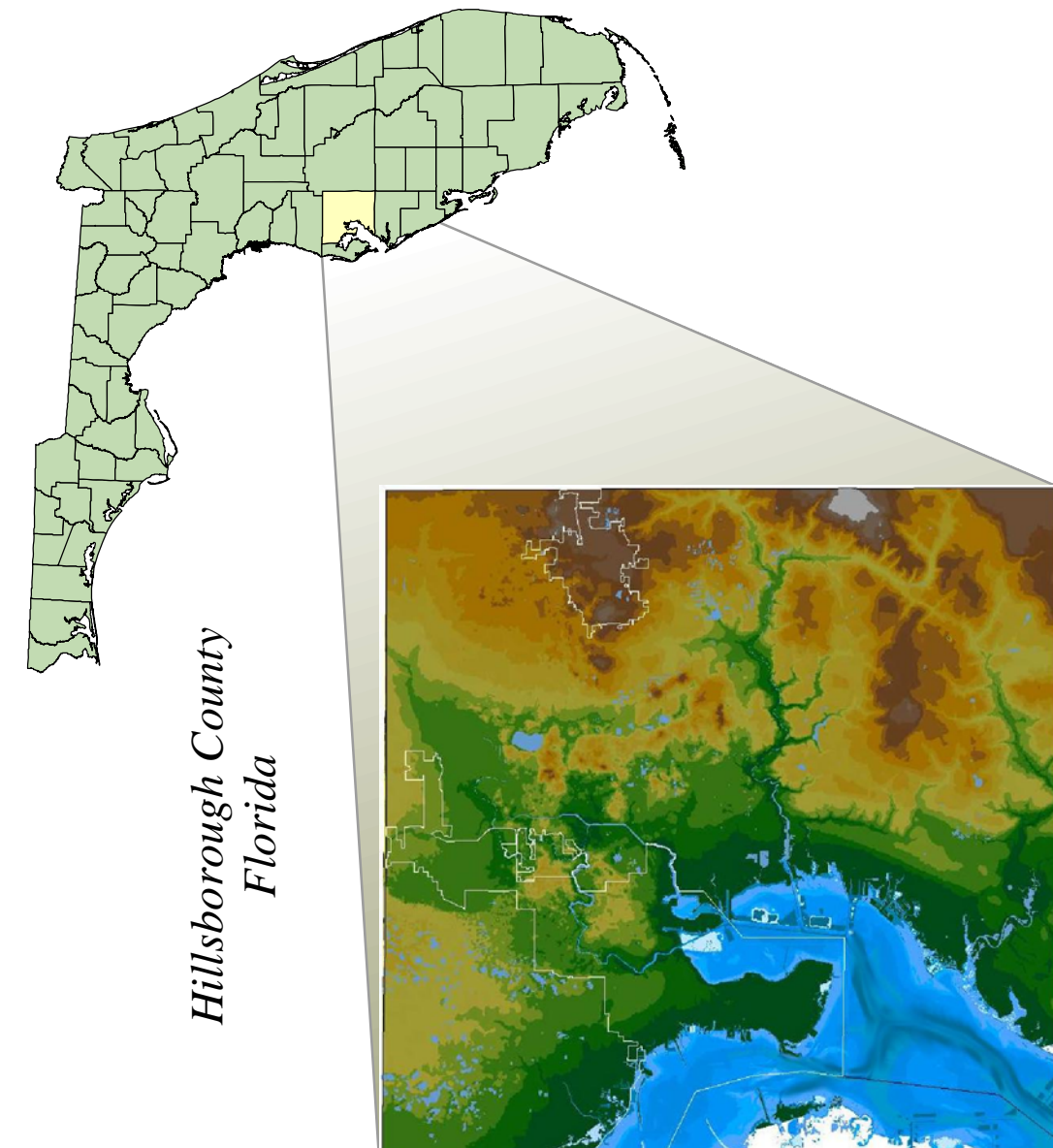


Legend

- CORRIDORS**
- 2 Lanes
 - 3 Lanes
 - 4 Lanes
 - 6 Lanes
 - 8 Lanes
 - 10 Lanes
 - 2 Lane Frontage Roads Enhanced
- INTERSECTIONS**
- Grade Separation
 - Reconfiguration
- Other Features**
- Keystone Odessa Community Boundary
 - Tampa Service Area
 - Urban Service Area
 - Tampa
 - Hillsborough County
 - Water and Bay
 - Streams/Rivers
 - County Boundary
 - Major Roads
 - Local Roads
 - Active Railroad



Locator Map



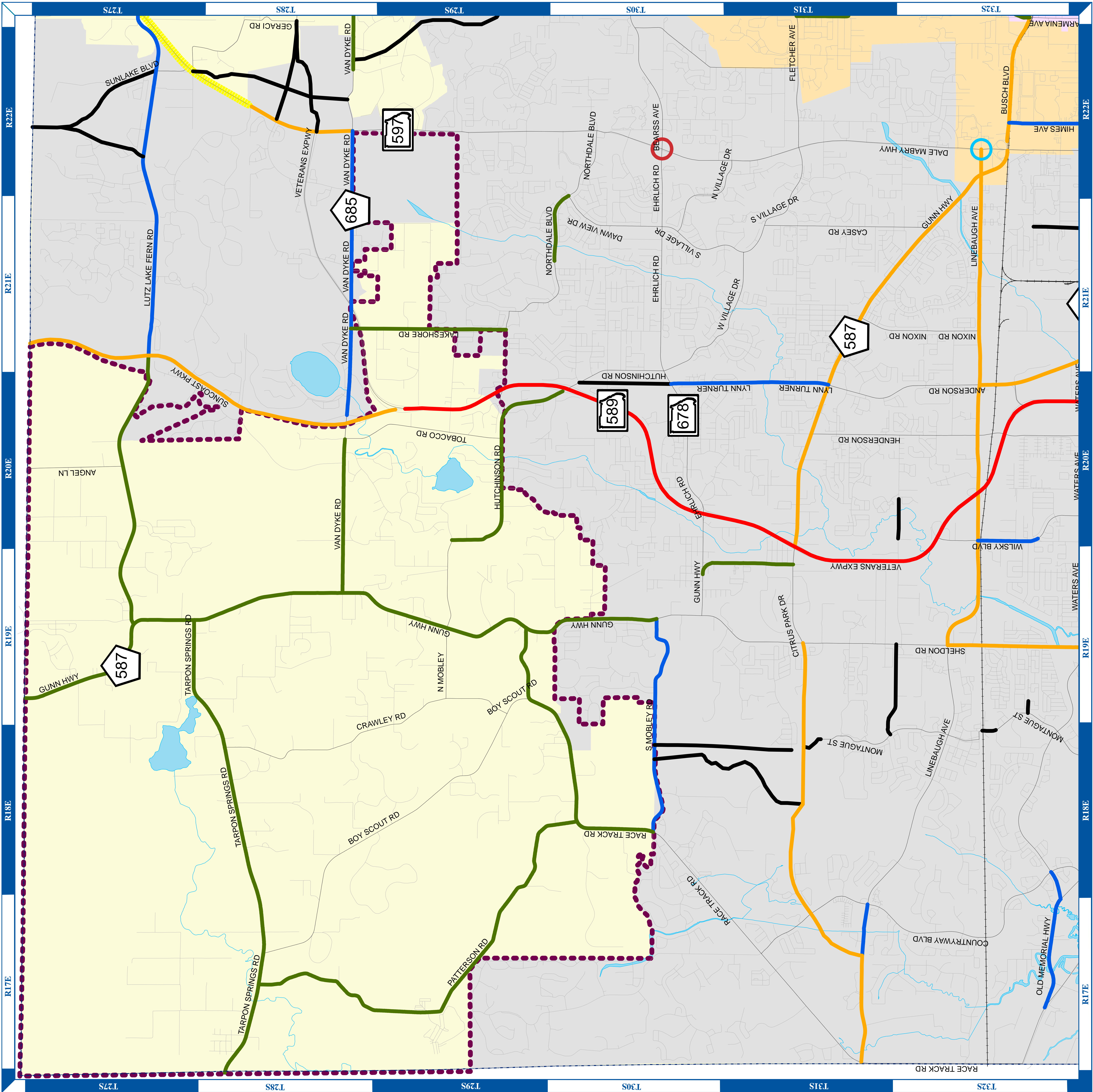
Hillsborough County
Map 25 Corridor Preservation Plan
with Keystone Odessa Community Boundary
March 4, 2010

DATA SOURCES: Basemap, roads, water from Hillsborough County City-County Planning Commission. Parcel Lines and data from Hillsborough County Property Appraiser. Wetlands from SWFWMD. Significant Wildlife Habitat from Planning and Development Management, based on satellite imagery. Only wetlands greater than 40 acres depicted.

REPRODUCTION: This sheet may not be reproduced in part or full for sale to anyone without specific approval of the Hillsborough County City-County Planning Commission.

ACCURACY: It is intended that the accuracy of the basemap comply with U.S. National Map accuracy standards. However, such accuracy is not guaranteed by the Hillsborough County City-County Planning Commission. The user assumes all responsibility for the most current data and information, see the appropriate source.

File Location: G:\GIS\workspace\Map\HC Corridor Preservation Plan Map\ESRI\Map 25 HC Corridor Preservation Plan with Keystone Odessa Community Boundary.mxd
Author: Roger W. Mathier - GIS Analyst



PAGE LEFT INTENTIONALLY BLANK

**Hillsborough County MPO 2035
Long Range Transportation Plan
Sales Tax Option with
Keystone Odessa Community Boundary**

Hillsborough County MPO
County Center, 601 E. Kennedy Blvd., 18th FL
P.O. Box 1110 Tampa, Florida 33601-1110
813 - 272 - 6940 / 813 - 301 - 7172 fax
www.hillsboroughmop.org



Legend

NON-TRANSIT PROJECTS

- Roadways
- Trails
- Intersections

BUS AND PARATRANSIT

- New Express Bus Routes
- New & Enhanced Local Bus Routes
- More Service on Existing Bus Routes
- New Flex Service

RAPID TRANSIT

- MetroRapid

PLANNING AREAS

- Keystone Odessa

Urban Service Area

- Hillsborough County
- Other Counties

Water and Bay

- Streams/Rivers
- County Boundary
- Major Roads

**ADOPTED:
December 9, 2009**

Locator Map

Hillsborough County 2035 LRTP
Sales Tax Option with Keystone
Odessa Community Boundary
March 8, 2010

Hillsborough County
Florida

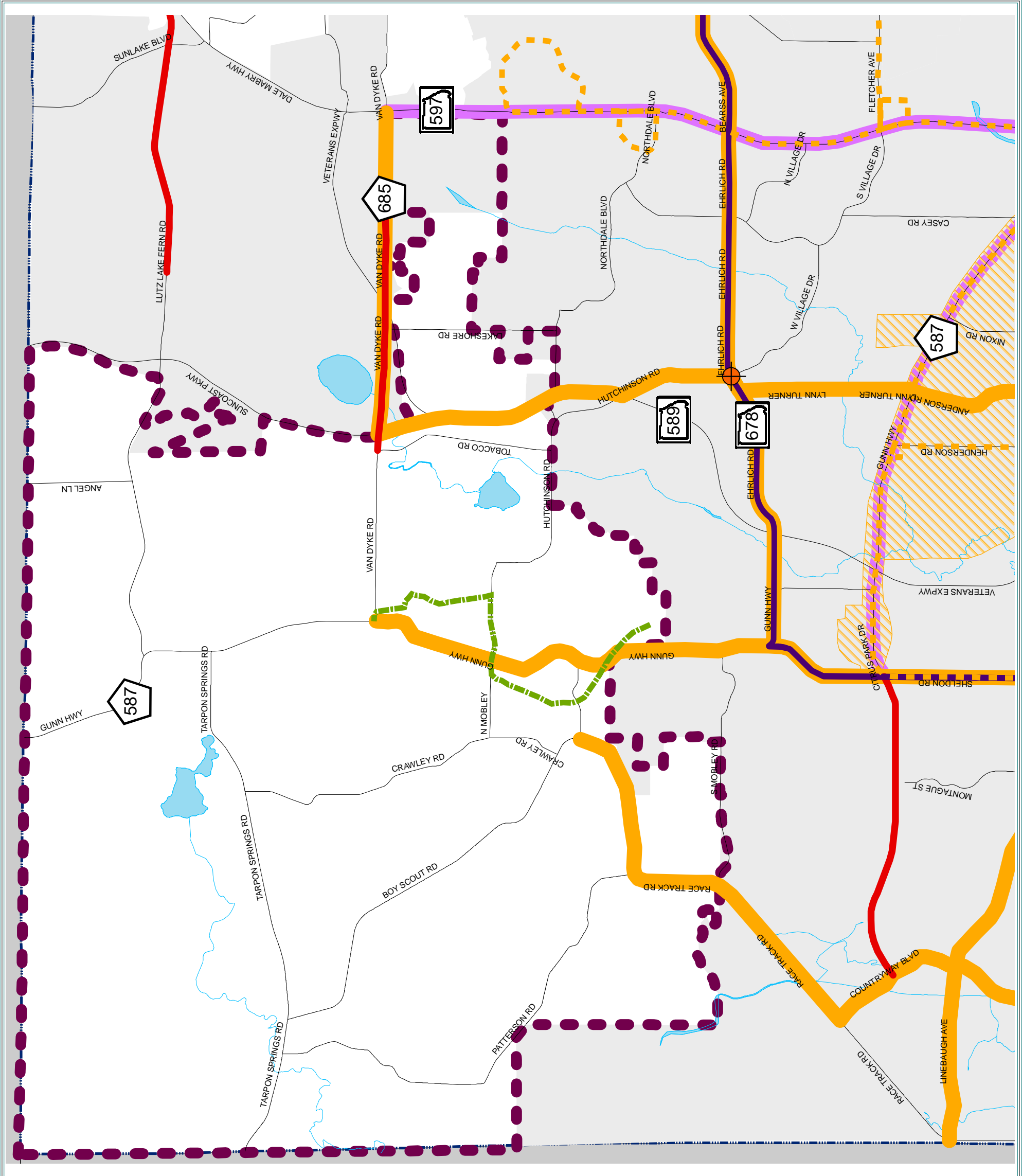
DATA SOURCES: Base map, roads, water from Hillsborough County City-County Planning Commission. Parcel Lines and data from Hillsborough County Property Appraiser. Wetlands from SWFWMD. Significant Wildlife Habitat from Planning and Development Management, based on satellite imagery. Only wetlands greater than 40 acres depicted.

REPRODUCTION: This sheet may not be reproduced in part or full for sale to anyone without specific approval of the Hillsborough County City-County Planning Commission.

ACCURACY: It is intended that the accuracy of the base map comply with U.S. National Map Accuracy Standards. However, such accuracy is not guaranteed by the Hillsborough County City-County Planning Commission. For the most current data and information, see the appropriate source.

File Location: G:\gis\mop\project\mop\Roger\Community Plan Maps\11x17 2035 LRTP Sales Tax Option Keystone Odessa Community Boundary.mxd

Author: Roger W. Mathis - GIS Analyst



PAGE LEFT INTENTIONALLY BLANK