

# Hillsborough County MPO 2035 Long Range Transportation Plan Keystone/Odesa Community Plan Concept Map



Hillsborough County MPO  
County Center, 601 E. Kennedy Blvd., 18th Fl.  
P.O. Box 1110 Tampa, Florida 33601-1110  
813 - 272 - 5940 / 813 - 301 - 7172 fax  
www.hillsboroughmpo.org

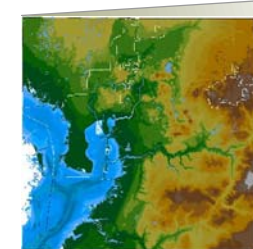


## Legend

- |  |                                |  |   |
|--|--------------------------------|--|---|
|  | N. Dale Mabry Overlay District |  | High School   |
|  | Major Gateways                 |  | Middle School   |
|  | Minor Gateways                 |  | Elementary School   |
|  | Fire Stations                  |  | Parks:<br>Local and Regional                                  |
|  | Libraries                      |  | Acquired Land<br>Other Public Land<br>Other Preservation Land |
|  | Rural Preservation Corridors   |  | Keystone/Odesa<br>Community Boundary                          |
|  | Enhancement Corridors          |  | Keystone/Odesa<br>Activity Center                             |
|  | Scenic Corridors               |  | Urban Service Area  |
|  | Other Counties                 |  | Parcels   |
|  | Tampa                          |  | Streams/Rivers  |
|  | Temple Terrace                 |  | County Boundary   |
|  | Water and Bay                  |  | Major Roads   |
|  |                                |  | Limited Access Roads  |

## Locator Map

Hillsborough County 2035 LRTP  
Keystone/Odesa Community Plan  
Concept Map  
January 13, 2011



# DRAFT

DATA SOURCES : Basemap, roads, water from Hillsborough County City-County Planning Commission. Parcel Lines and data from Hillsborough County Property Appraiser. Wetlands from SWFWMD. Significant Wildlife Habitat from Planning and Development Management, based on satellite imagery. Only wetlands greater than 40 acres depicted.

REPRODUCTION : This sheet may not be reproduced in part or full for sale to anyone without specific approval of the Hillsborough County City-County Planning Commission.

ACCURACY : It is intended that the accuracy of the basemap comply with U.S. National Map accuracy standards. However, such accuracy is not guaranteed by the Hillsborough County City-County Planning Commission. This map for illustrative purposes only. For the most current data and information, see the appropriate source.

File Location : G:\gisroot\projects\mpo\Roger\Community Plan Maps\Keystone Odessa, 11x17 Concept Map\_Keystone Odessa Community Plan.mxd  
Author : Roger W Mathie - GIS Analyst

